

Exhibit E: Ownership and Control

TWN Holdings, Inc., (“Holdings”), which is the sole member of licensee Interactivation Health Networks, LLC, a Delaware limited liability company (“Licensee”), has agreed to a change in control transaction through the sale of 100% of the stock interest in Holdings to Project Medcon Acquisition Corp. (“PMAC”), an indirect wholly-owned subsidiary of WebMD Health Corp., a Delaware corporation.

Through intervening Delaware entities shown on the attached chart, WebMD is ultimately controlled by IB Aggregator II, L.P. (“IBA II”), a Delaware limited partnership, which is majority-owned by two investment funds controlled and managed by KKR & Co., Inc. (“KKR”), a Delaware corporation. KKR is a widely held stock corporation with shares that are publicly traded on the New York Stock Exchange (Ticker Symbol: KKR). It is a global investment firm that sponsors investment funds that invest in private equity, credit and real assets and also offers retirement, life and reinsurance products. Twenty percent of IBA II is owned by Temasek Holdings (Private) Limited, a state-owned holding company that is a national wealth fund ultimately owned by the Government of Singapore, and which has previously been a significant investor in several FCC-regulated entities that have held a variety of FCC licenses.

All additional information required in response to Schedule A, Question A20 is provided on the attached ownership structure chart.

Project Medcon Acquisition Corp. Corporate Hierarchy (as of 5/24/2021)

No one individual owns greater than 10% of any entity in the corporate hierarchy.

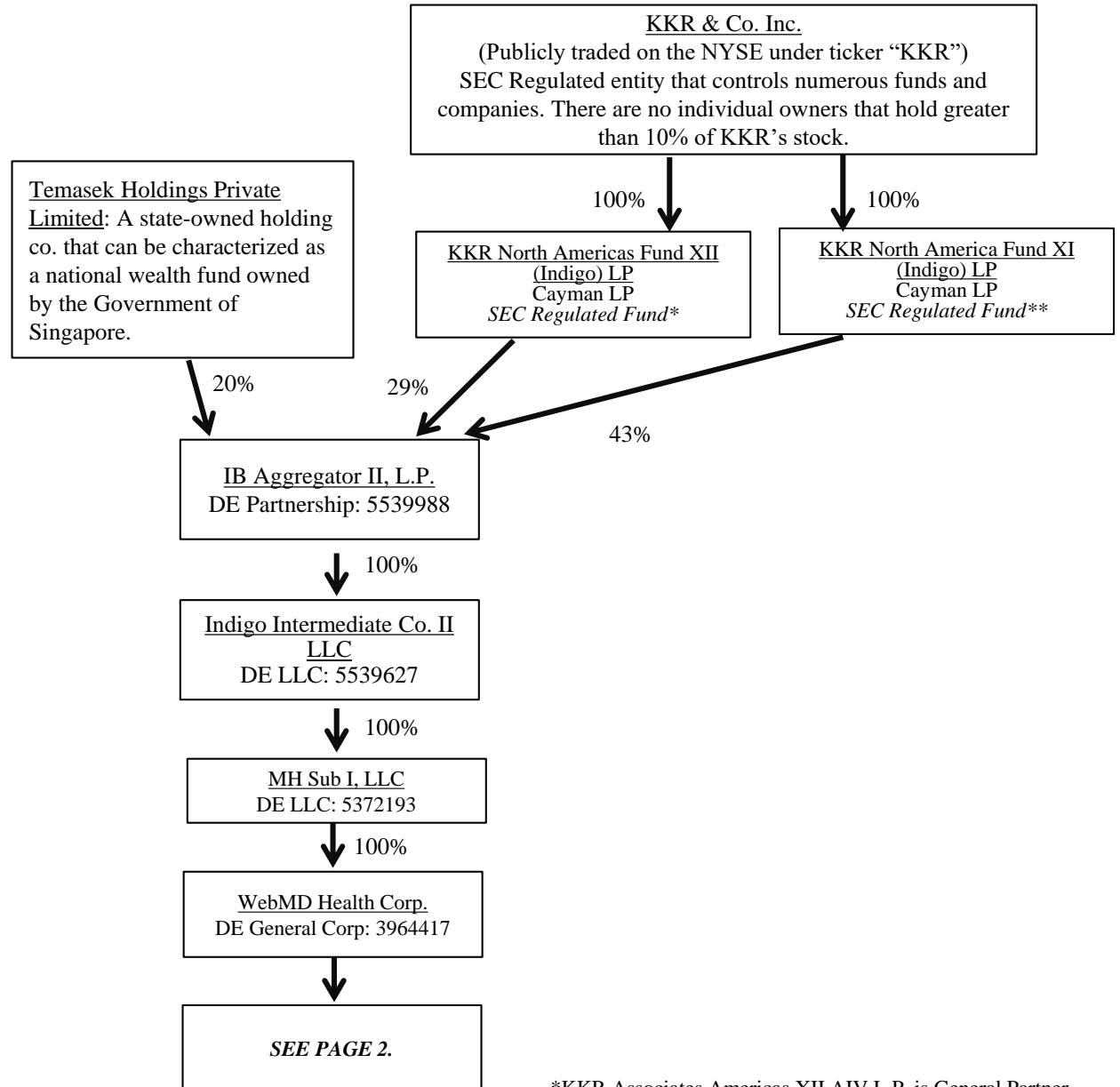
Operating addresses:

KKR & KKR North America Fund XI LP:
C/O KOHLBERG KRAVIS ROBERTS & CO. L.P., 9 WEST 57TH STREET, SUITE 4200, NEW YORK NY 10019

WebMD Health Corp., MMUSA Acquisition Corp., MMUSA Acquisition II Corp., and Project Medcon Acquisition Corp.:
395 Hudson St., 3rd Floor, New York, NY 10014

Temasek Holdings Private Limited:
c/o Temasek International (USA) LLC
101 California Street, Suite 3700
San Francisco, CA 94111

All other listed entities:
909 N. Pacific Coast Highway, 11th Floor,
El Segundo, CA 90245



*KKR Associates Americas XII AIV L.P. is General Partner.

** KKR Associates North America XI AIV L.P. is General Partner.

