

**FCC Form 312 Transfer of Control
Exhibit E (Item 34 and A20)
Transferee: MTN Infrastructure TopCo, Inc.
Transferor: Lumos Networks Corp.
Licensee: Lumos Media, Inc. f/k/a NTELOS Media, Inc.**

OWNERSHIP

In response to Items 34 and A20 of Form 312, the information below provides (1) the name, address, citizenship, and primary business of the controlling entity and any intermediate subsidiaries or parties; (2) the names, addresses, citizenship, and the percentages of voting and equity stock of those stockholders holding 10 percent or more of the controlling corporation's voting stock; and (3) the identification of the aliens or foreign entities, their nationality, their relationship to the applicant, and the percentage of stock they own or vote.

Lumos Media Inc. ("Licensee"), f/k/a NTELOS Media Inc., is an indirect, wholly owned subsidiary of Transferor Lumos Networks Corp. ("Lumos Parent"). See **Exhibit A** for a complete corporate structure. The following entities hold a 10% or greater, direct or indirect interest¹ in Lumos Parent:

MTN Infrastructure TopCo, Inc.
c/o EQT Partners Inc.
1114 Avenue of the Americas, 45th Floor
New York, NY 10036
Citizenship: United States (DE)
Principal Business: Holding Corporation
Ownership Percentage: 100% (directly)

MTN Infrastructure Intermediate, LP
c/o EQT Partners Inc.
1114 Avenue of the Americas, 45th Floor
New York, NY 10036
Citizenship: United States (DE)
Principal Business: Holding Partnership
Ownership Percentage: 100% (indirectly as 100% owner of MTN Infrastructure TopCo, Inc.)

MTN Infrastructure Intermediate GP, Inc.
c/o EQT Partners Inc.
1114 Avenue of the Americas, 45th Floor
New York, NY 10036
Citizenship: United States (DE)
Principal Business: Holding Company

¹ Unless otherwise indicated, the ownership interests provided herein represent both equity and voting interests.

Ownership Percentage: 100% (indirectly as sole General Partner of MTN Infrastructure Intermediate, LP.)

MTN Infrastructure TopCo Blocker, Inc.
c/o EQT Partners Inc.
1114 Avenue of the Americas, 45th Floor
New York, NY 10036

Citizenship: United States (DE)

Principal Business: Holding Corporation

Ownership Percentage: 100% (indirectly as sole Limited Partner of MTN Infrastructure Intermediate LP and 100% owner of MTN Infrastructure Intermediate GP, Inc.)

MTN Infrastructure TopCo, LP
c/o EQT Partners Inc.
1114 Avenue of the Americas, 45th Floor
New York, NY 10036

Citizenship: United States (DE)

Principal Business: Holding Company

Ownership Percentage: 100% (indirectly as 100% owner of MTN Infrastructure TopCo Blocker, Inc.)

MTN Infrastructure TopCo GP, LLC
c/o EQT Partners Inc.
1114 Avenue of the Americas, 45th Floor
New York, NY 10036

Citizenship: United States (DE)

Principal Business: Holding Company

Ownership Percentage: 100% (indirectly as sole General Partner of MTN Infrastructure TopCo, LP)

The following entities are each a limited partner of MTN Infrastructure TopCo, LP and as a result hold a 10% or greater indirect interest in Lumos Parent. None of these limited partners hold a greater than 50% equity interest in MTN Infrastructure TopCo, LP. The immediate controlling owner of each of these limited partners is EQT Infrastructure III (GP) SCS,² and that entity's owners are the ultimate owners of Lumos Parent. Information regarding each of these entities is set forth below, which are identified below consistent with the Commission's rules.

² Each of the entities listed in this section is itself a limited partnership or limited liability company, which has certain other members that are insulated in accordance with Commission rules and do not exercise any control over the entity. None of these other members has a 10% indirect ownership interest in Lumos Parent.

MTN Infrastructure Co-invest 1 SCSp³
23, rue Aldringen
L-1118 Luxembourg
Citizenship: Luxembourg
Principal Business: Holding Company
Ownership Percentage: Indirect intermediate interest as limited partner of MTN Infrastructure TopCo, LP

MTN Infrastructure Co-invest 2 SCSp
23, rue Aldringen
L-1118 Luxembourg
Citizenship: Luxembourg
Principal Business: Holding Company
Ownership Percentage: Indirect intermediate interest as limited partner of MTN Infrastructure TopCo, LP

MTN Infrastructure Sidecar 2 SCSp
23, rue Aldringen
L-1118 Luxembourg
Citizenship: Luxembourg
Principal Business: Holding Company
Ownership Percentage: 49.4% (Indirect intermediate interest as limited partner of MTN Infrastructure TopCo, LP)

MTN Infrastructure Lux II S.à r.l.⁴
23, rue Aldringen
L-1118 Luxembourg
Citizenship: Luxembourg
Principal Business: Holding Company
Ownership Percentage: 25.26% (Indirect intermediate interest as limited partner of MTN Infrastructure TopCo, LP)

MTN Infrastructure Lux III S.à r.l.
23, rue Aldringen
L-1118 Luxembourg
Citizenship: Luxembourg
Principal Business: Holding Company
Ownership Percentage: 25.26% (Indirect intermediate interest as limited partner of MTN Infrastructure TopCo, LP)

³ A Luxembourg Société en Commandite Simple Spéciale (“SCSp”) is most similar to a U.S. limited partnership.

⁴ A Luxembourg Société à responsabilité limitée (“S.à.r.l”) is most similar to a U.S. limited liability company.

MTN Infrastructure Sidecar 1 SCSp
23, rue Aldringen
L-1118 Luxembourg
Citizenship: Luxembourg
Principal Business: Holding Company
Ownership Percentage: 47.97% (Indirect intermediate interest as owner of 96% of the equity in MTN Infrastructure Lux II S.à r.l. and 96% of the equity of MTN Infrastructure Lux III S.à r.l.)

The following entities hold a 10% or greater interest in MTN Infrastructure TopCo GP, LLC and thus an indirect 10% or greater interest in Lumos Parent:

EQT Infrastructure III (GP) SCS⁵
23, rue Aldringen
L-1118 Luxembourg
Citizenship: Luxembourg
Principal Business: General Partner
Ownership Percentage: 100% (indirectly as 100% owner of MTN Infrastructure TopCo GP, LLC and General Partner of the following entities: MTN Infrastructure Co-invest 1 SCSp, MTN Infrastructure Co-invest 2 SCSp, MTN Infrastructure Sidecar 1 SCSp, and MTN Infrastructure Sidecar 2 SCSp)

EQT Fund Management S.à r.l.
23, rue Aldringen
L-1118 Luxembourg
Citizenship: Luxembourg
Principal Business: General Partner
Ownership Percentage: 100% (indirectly by exercising management control of EQT Infrastructure III (GP) SCS)

EQT Infrastructure III General Partner S.à r.l.⁶
23, rue Aldringen
L-1118 Luxembourg
Citizenship: Luxembourg
Principal Business: General Partner
Ownership Percentage: 100% (indirectly as 5% equity holder and General Partner of EQT Infrastructure III (GP) SCS)

⁵ A Luxembourg Société en Commandite Simple (“SCS”) is most similar to a U.S. limited partnership.

⁶ See note 4 *supra*.

EQT Holdings Infrastructure III B.V.⁷
World Trade Center Schiphol, H-Tower
Floor 4, Schiphol Boulevard 355 1118
BJ Schiphol, The Netherlands
Citizenship: Netherlands
Principal Business: Limited Partner
Ownership Percentage: 94.9% (indirectly as Limited Partner of EQT Infrastructure III (GP) SCS)

EQT Holdings B.V.
World Trade Center Schiphol, H-Tower
Floor 4, Schiphol Boulevard 355 1118
BJ Schiphol, The Netherlands
Citizenship: Netherlands
Principal Business: Limited Partner
Ownership Percentage: 94.9% (indirectly as 100% direct owner of EQT Holdings Infrastructure III B.V.)

EQT AB⁸
Hovslagargatan 3, 103 27
Stockholm, Sweden
Citizenship: Sweden
Principal Business: Investments/Holding Company
Ownership Percentage: 100% (indirectly as 100% direct owner of EQT Holdings BV and 100% direct owner of EQT Infrastructure III General Partner S.à r.l)

EQT International Holdings B.V.
World Trade Center Schiphol, H-Tower
Floor 4, Schiphol Boulevard 355 1118
BJ Schiphol, The Netherlands
Citizenship: Netherlands
Principal Business: Holding Company
Ownership Percentage: 100% (indirectly as 81% equity owner of EQT AB)

EQT Holdings Coöperatief W.A.⁹
World Trade Center Schiphol, H-Tower
Floor 4, Schiphol Boulevard 355 1118
BJ Schiphol, The Netherlands

⁷ A Dutch Besloten Vennootschap (“BV”) is most similar to a U.S. limited liability company.

⁸ A Swedish Aktiebolag (“AB”) is most similar to a U.S. corporation or limited liability company; EQT AB is most similar to a U.S. corporation.

⁹ A W.A. entity is a Dutch cooperative association of members.

Citizenship: Netherlands

Principal Business: Members Association

Ownership Percentage: 100% (indirectly as 100% equity owner of EQT International Holdings B.V.)

Investor Investment Holding AB¹⁰

Arsenalgatan 8C, 103 32

Stockholm, Sweden

Citizenship: Sweden

Principal Business: Holding Company

Ownership Percentage: 19% (indirectly as 19% owner of EQT AB)

Investor Holding AB¹¹

Arsenalgatan 8C, 103 32

Stockholm, Sweden

Citizenship: Sweden

Principal Business: Holding Company

Ownership Percentage: 19% (indirectly as 100% owner of Investor Investment Holding AB)

Investor AB¹²

Arsenalgatan 8C, 103 32

Stockholm, Sweden

Citizenship: Sweden

Principal Business: Holding Company

Ownership Percentage: 19% (indirectly as 100% owner of Investor Holding AB)

Investor AB is a publicly traded company listed on the Nasdaq Stockholm stock exchange (ticker symbol INVEB). The ownership of Investor AB is broadly held and no single individual or entity owns or controls 50% or more of Investor AB. Thus no individual or entity has a 10% or greater interest in EQT AB or Lumos Parent, either by virtue of voting rights or economic interests in Investor AB or by operation of the Commission's ownership disclosure rules.

Investor AB, consistent with Swedish corporate law (and similar to U.S. public corporations), selects its directors pursuant to a public meeting of the company's shareholders. These shareholders exercise their vote for members of the Board of Directors consistent with the voting rights to which they are entitled based on the number and class of shares they own. The elected Board of Directors of Investor AB is authorized to appoint a President, who then holds authority to appoint other executives to facilitate the effective operation of the company. The current corporate officers and directors of Investor AB (and their country of citizenship) are:

¹⁰ Investor Investment Holding AB is most similar to a U.S. corporation.

¹¹ Investor Holding AB is most similar to a U.S. corporation.

¹² Investor AB is most similar to a U.S. Corporation.

Board of Directors¹³

Jacob Wallenberg, Sweden
Marcus Wallenberg, Sweden
Josef Ackerman, Switzerland
Gunnar Brock, Sweden
Johan Forsell, Sweden
Magdalena Gerger, Sweden
Tom Johnstone, Great Britain
Grace Reksten Skaugen, Norway
Hans Stråberg, Sweden
Lena Treschow Torell, Sweden
Sara Öhrvall, Sweden

Officers

Johan Forsell, President and CEO, Sweden
Helena Saxon, CFO, Sweden
Petra Hedengran, General Counsel and Head of Corporate Governance and Compliance, Sweden
Daniel Nodhäll, Head of Listed Core Investments, Sweden
Stefan Stern, Head of Corporate Relations, Sustainability and Communications, Sweden
Christian Cederholm, Co-Head of Patricia Industries, Sweden
Noah Walley, Co-Head of Patricia Industries, United States and Great Britain
Jessica Häggström, Head of Human Resources, Sweden

Ownership and Control of EQT Holdings Coöperatief W.A.

EQT Holdings Coöperatief W.A (EQT Coöperatief) is not a corporation but is a Dutch cooperative association of its members. The members vote, based on their voting rights, to appoint managers of the organization. No single member of EQT Coöperatief owns 10% or more of the economic rights in the organization. Similarly, no member of EQT Coöperatief holds 10% or more of the voting rights under EQT Coöperatief's articles of formation. Instead, those articles provide for relatively equal voting rights for each member, and there are enough members so that no one member has 10% or more of the voting rights in EQT Coöperatief pursuant to such articles.

There is, however, a voting agreement among the members of EQT Coöperatief that allocates voting rights for operational issues differently. While these voting rights are also broadly dispersed among EQT Coöperatief's members, one member of EQT Coöperatief exercises 12.97% of the voting rights for operational issues under the agreement. The ownership information for this member is provided below.

¹³ <https://www.investorab.com/about-investor/organization/>

Qarlbo Netherlands B.V.
World Trade Center Schiphol, H-Tower
Floor 4, Schiphol Boulevard 355 1118
BJ Schiphol, The Netherlands
Citizenship: Netherlands
Principal Business: Holding Company
Ownership Percentage: 12.97% voting (indirectly as 12.97% owner of EQT Holdings
Coöperatief W.A.)

Conni Yngve Jonsson
PO Box 164 09
103 27 Stockholm, Sweden
Citizenship: Sweden
Principal Business: Individual Investor
Ownership Percentage: 12.97% voting (indirectly as 100% owner of Qarlbo Netherlands
B.V.)

Under the voting agreement, no other owner of EQT Coöperatief controls 10% or more of the voting power.

The managers of EQT Coöperatief, appointed by majority vote of the members of EQT Coöperatief in accordance with the members' agreement, are Victor Alexander de Roo, a citizen of the Netherlands, and Martijn van der Schaaf, also a citizen of the Netherlands. Neither manager is a member of EQT Coöperatief.

**FCC Form 312 Transfer of Control
Exhibit F (Items 43, A21)
Transferee: MTN Infrastructure TopCo, Inc.
Transferor: Lumos Networks Corp.
Licensee: Lumos Media, Inc. f/k/a NTELOS Media Inc.**

NOTICE OF TRANSFER OF CONTROL OF RECEIVE-ONLY EARTH STATION

Lumos Media, Inc., formerly known as NTELOS Media Inc., hereby notifies the Federal Communications Commission (“Commission”) that on November 17, 2017, MTN Infrastructure TopCo, Inc. (“MTN Infrastructure”) acquired all of the outstanding common stock of Lumos Networks Corp. (“Lumos Parent”), which wholly owns its subsidiary Lumos Media, Inc. This transaction was completed with the approval of the Commission for the transfer of control of domestic and international 214 authority from Lumos Parent to MTN Infrastructure.¹⁴

¹⁴ See Public Notice, *Domestic Section 214 Application Granted for the Transfer of Control of Lumos Networks Corp. to MTN Infrastructure TopCo, Inc.*, WC Docket No. 17-60, DA 17-1094 (rel. Nov. 8, 2017); Public Notice, *International Authorizations Granted*, Report No. TEL-01876, DA 17-1097, at 3 (rel. Nov. 9, 2017).

Correspondence concerning this Notice should be sent to:

For Transferee:

Andrew D. Lipman
Russell M. Blau
Joshua M. Bobeck
MORGAN, LEWIS & BOCKIUS LLP
1111 Pennsylvania Ave. NW
Washington, DC 20004
Tel: 202-739-3000
Fax: 202-739-3001
andrew.lipman@morganlewis.com
russell.blau@morganlewis.com
joshua.bobek@morganlewis.com

For Transferor and Licensees:

Regina M. Keeney
Emily J.H. Daniels
LAWLER, METZGER, KEENEY & LOGAN,
LLC
1717 K Street, NW, Suite 1075
Washington, DC 20006
Tel: 202-777-7700
Fax: 202-777-7763
gkeeney@lawlernetzger.com
edaniels@lawlernetzger.com

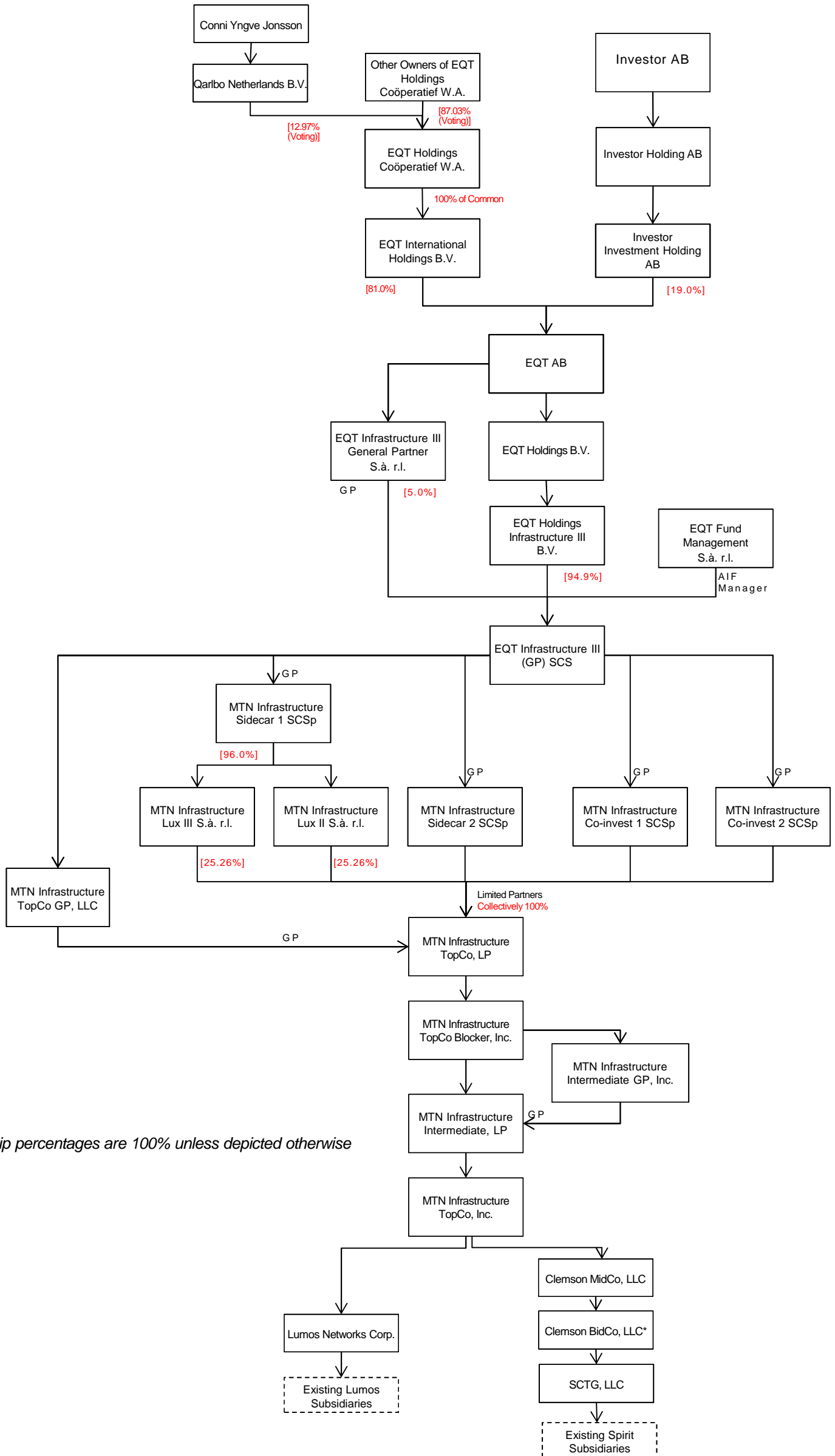
With a copy to:

Mary McDermott
Senior Vice President
and General Counsel
Lumos Networks Corp.
One Lumos Plaza, P.O. Box 1068
Waynesboro, VA 22980
Tel: 540-946-8677
mcdermottm@lumosnet.com

Exhibit A

Corporate Organization Chart

Exhibit A



All ownership percentages are 100% unless depicted otherwise

• See Joint Application of SCTG, LLC, South Carolina Net, Inc. d/b/a Spirit Telecom South Carolina Telecommunications Group Holdings LLC, PalmettoNet Inc., FRC, LLC and Clemson BidCo, LLC for authority pursuant to Section 214 of the Communications Act of 1934, as amended, to Transfer Indirect Control of Domestic and International 214 Authorization Holders to Clemson BidCo, LLC, IBFS File No. ITC-T/C-20170821-00135 (filed Aug. 21, 2017).