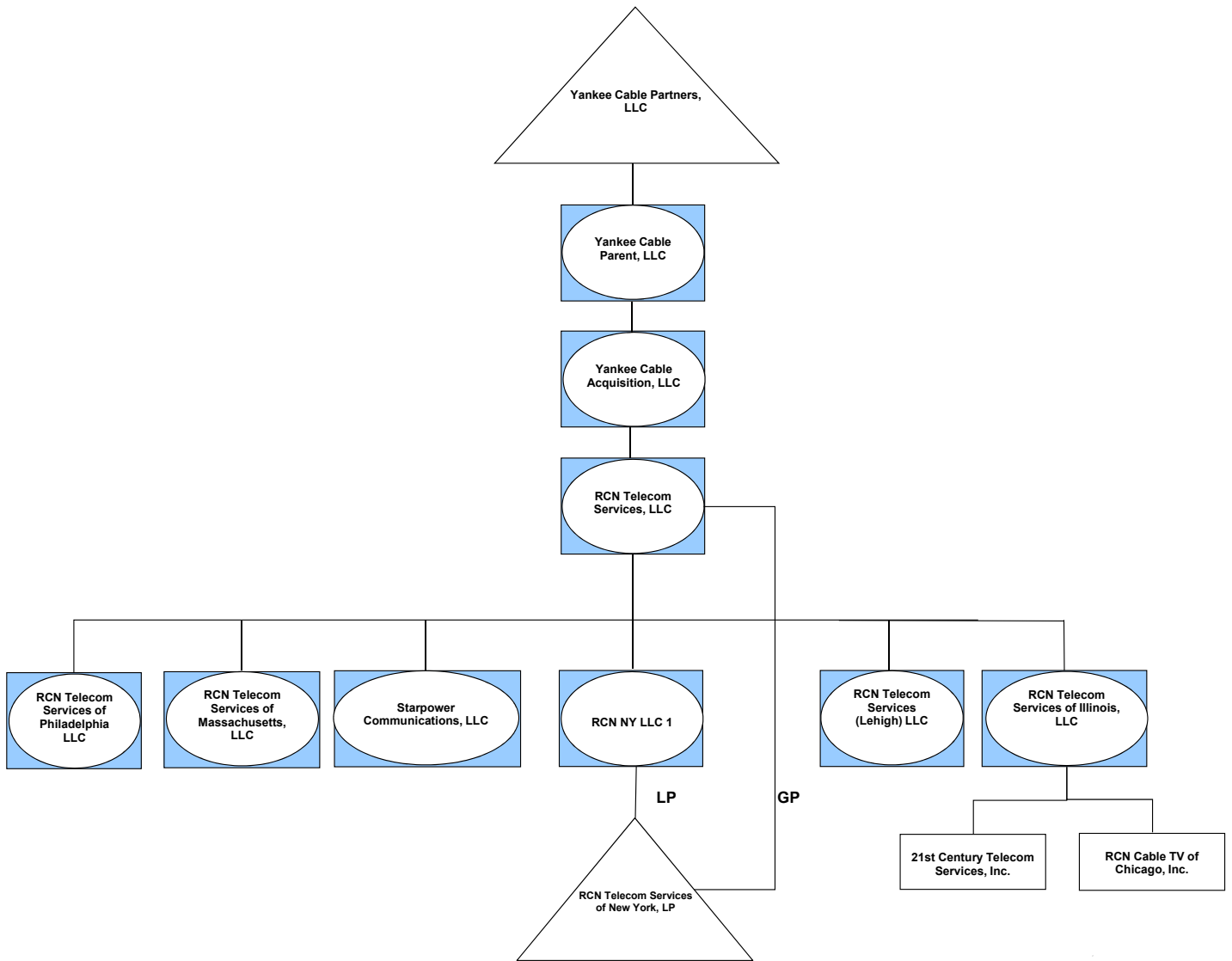


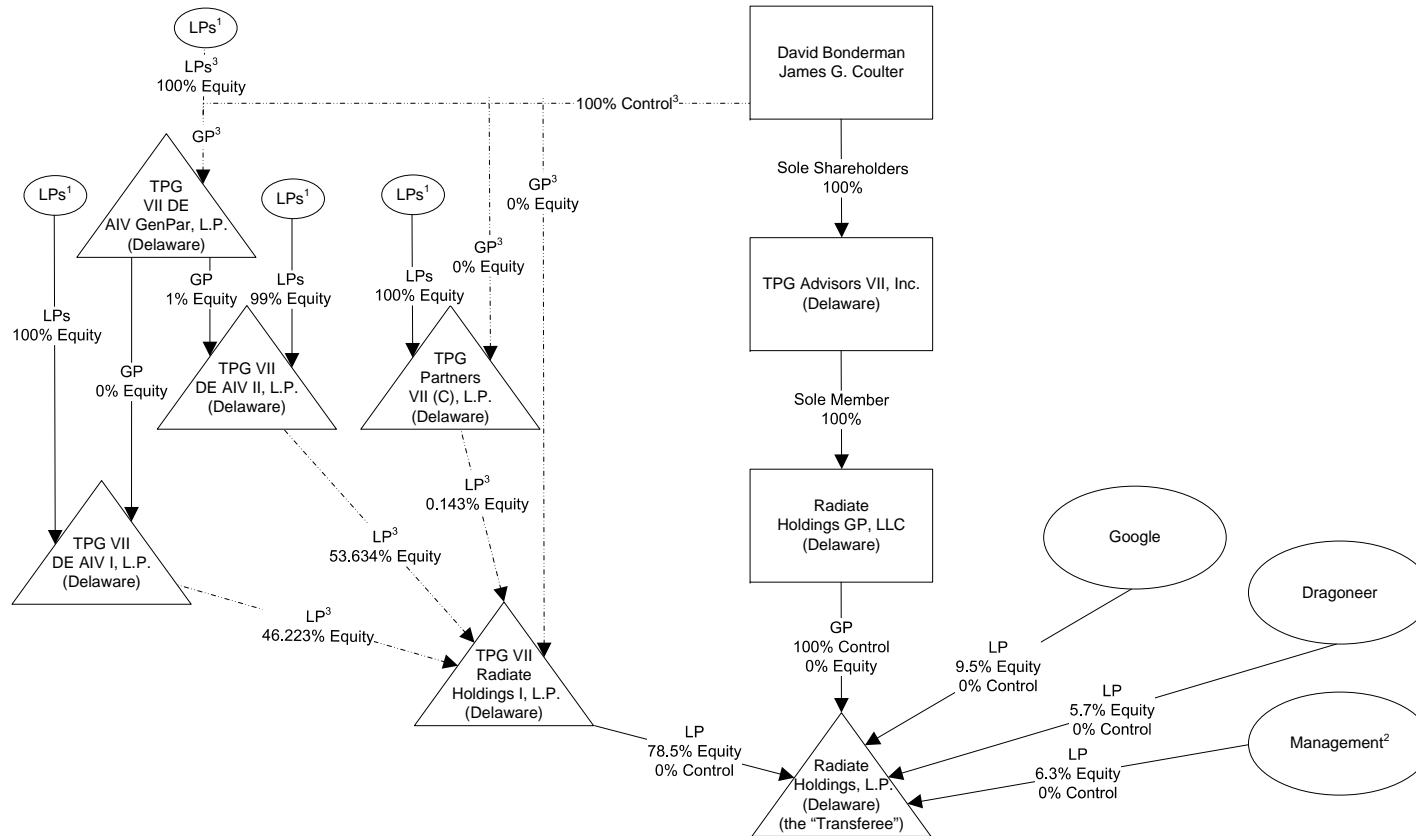
**EXHIBIT E**

**OWNERSHIP STRUCTURE**

**RCN Entities  
Pre-Close Corporate Structure**



## POST- TRANSACTION TPG OWNERSHIP STRUCTURE



**Notes:**

- <sup>1</sup> Each LP (a limited partner investor in the applicable fund) will hold less than five percent economic interest in the Transferee.
- <sup>2</sup> Interest held by various individuals. No individual holds an interest of five percent or greater.
- <sup>3</sup> Interest is held indirectly through entities not depicted, all of which are wholly owned or controlled (as applicable) by the entities shown.

