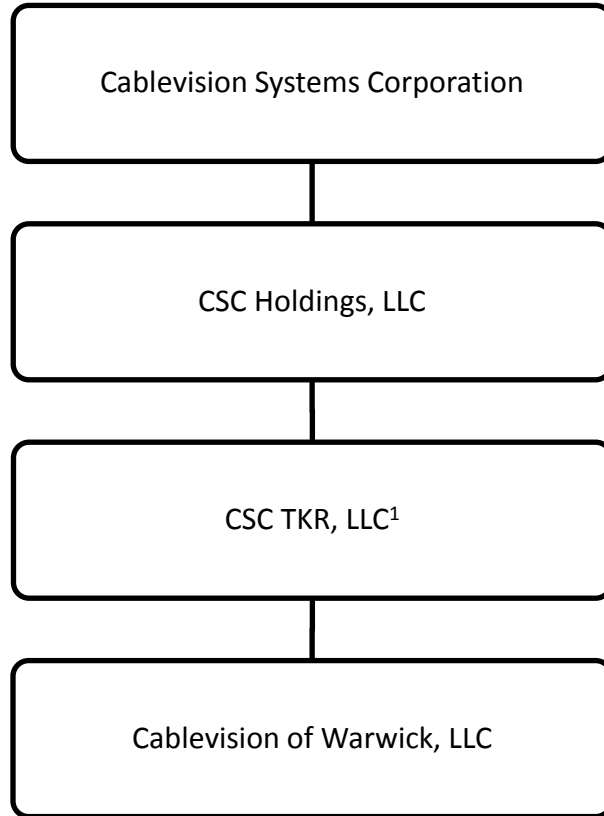
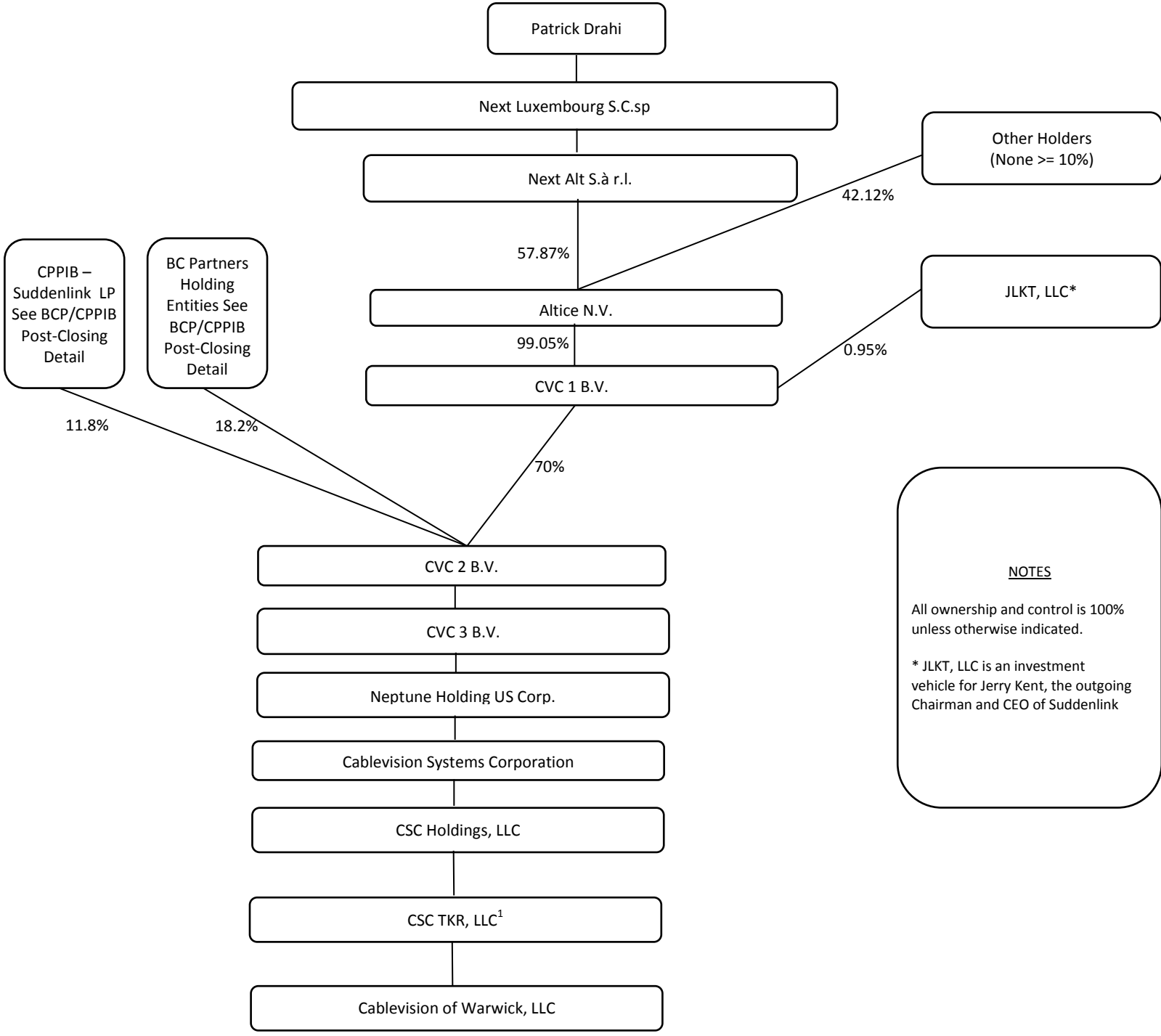


**Cablevision of Warwick, LLC  
Pre-Transaction Ownership Information**



<sup>1</sup> Doing business as:  
Cablevision of Elizabeth  
Cablevision of Raritan Valley  
Cablevision of Hamilton  
Cablevision of Morris

# Cablevision of Warwick, LLC Post-Transaction Ownership Information



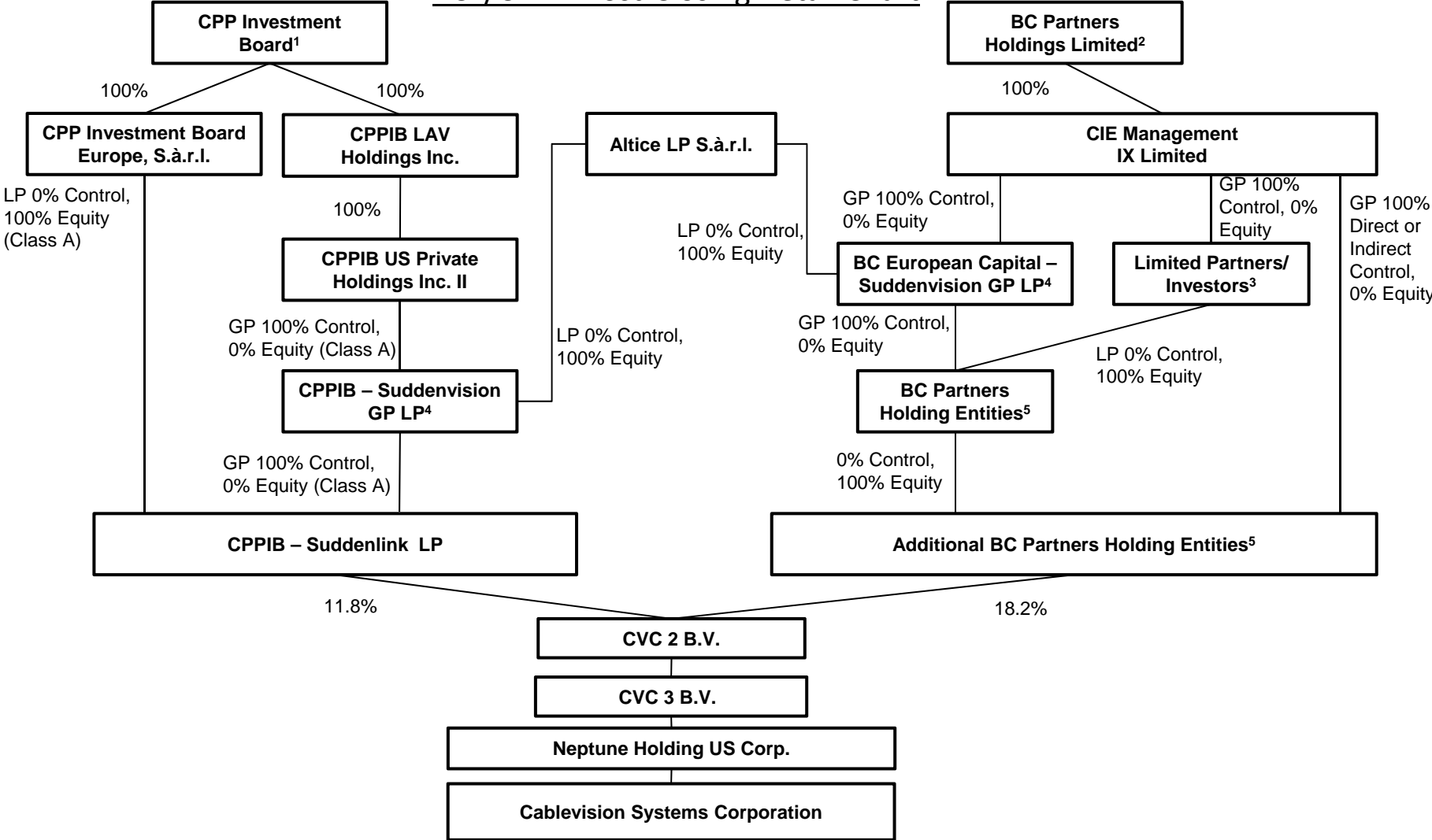
NOTES

All ownership and control is 100% unless otherwise indicated.

\* JLKT, LLC is an investment vehicle for Jerry Kent, the outgoing Chairman and CEO of Suddenlink

<sup>1</sup> Doing business as:  
 Cablevision of Elizabeth  
 Cablevision of Raritan Valley  
 Cablevision of Hamilton  
 Cablevision of Morris

# BCP/CPPIB Post-Closing Detail Chart



1 CPP Investment Board is an investment management organization incorporated in Canada which invests the assets of the Canada Pension Plan.

2 BC Partners Holdings Limited is a limited corporation organized under the laws of Guernsey.

3 Consists of various BC Partners funds and co-invest entities. A *de minimis* (less than 5%) portion of the BC Partners equity interest in CVC 2 will be held through separate entities directly owned by BC Partners Holdings Limited.

4 At closing, the GP LP entities are expected to make small capital contributions to CPPIB – Suddenlink LP and the BC Partners Holding Entities, respectively, resulting in the GP LP entities receiving a *de minimis* amount of equity (less than 2%) in Class B shares. Certain affiliates of CPPIB and BCP hold *de minimis* Class C equity interests (\$1) in their respective GP LP with no control rights.

5 Consists of various limited partnerships and other intermediate holding entities directly or indirectly controlled by CIE Management IX Limited.