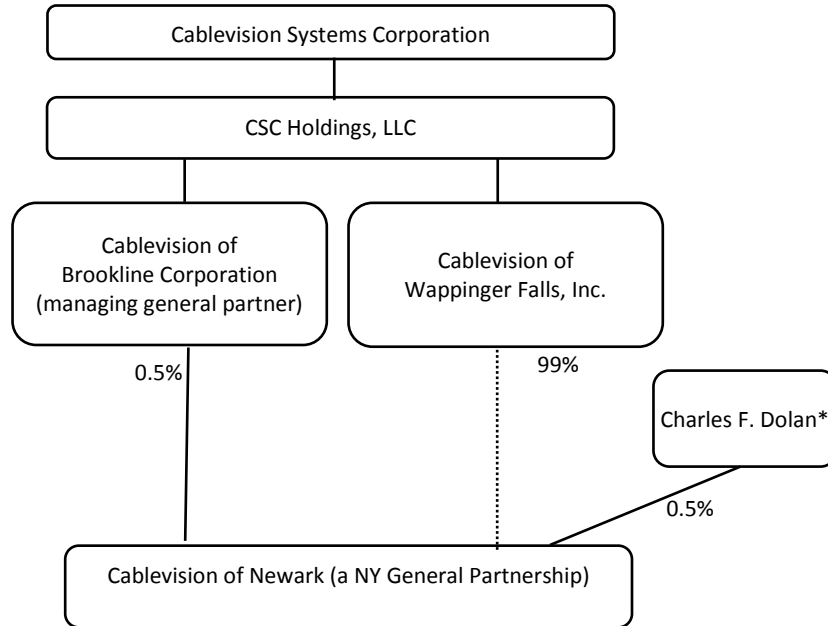


Cablevision of Ossining Limited Partnership Pre-Transaction Ownership Information

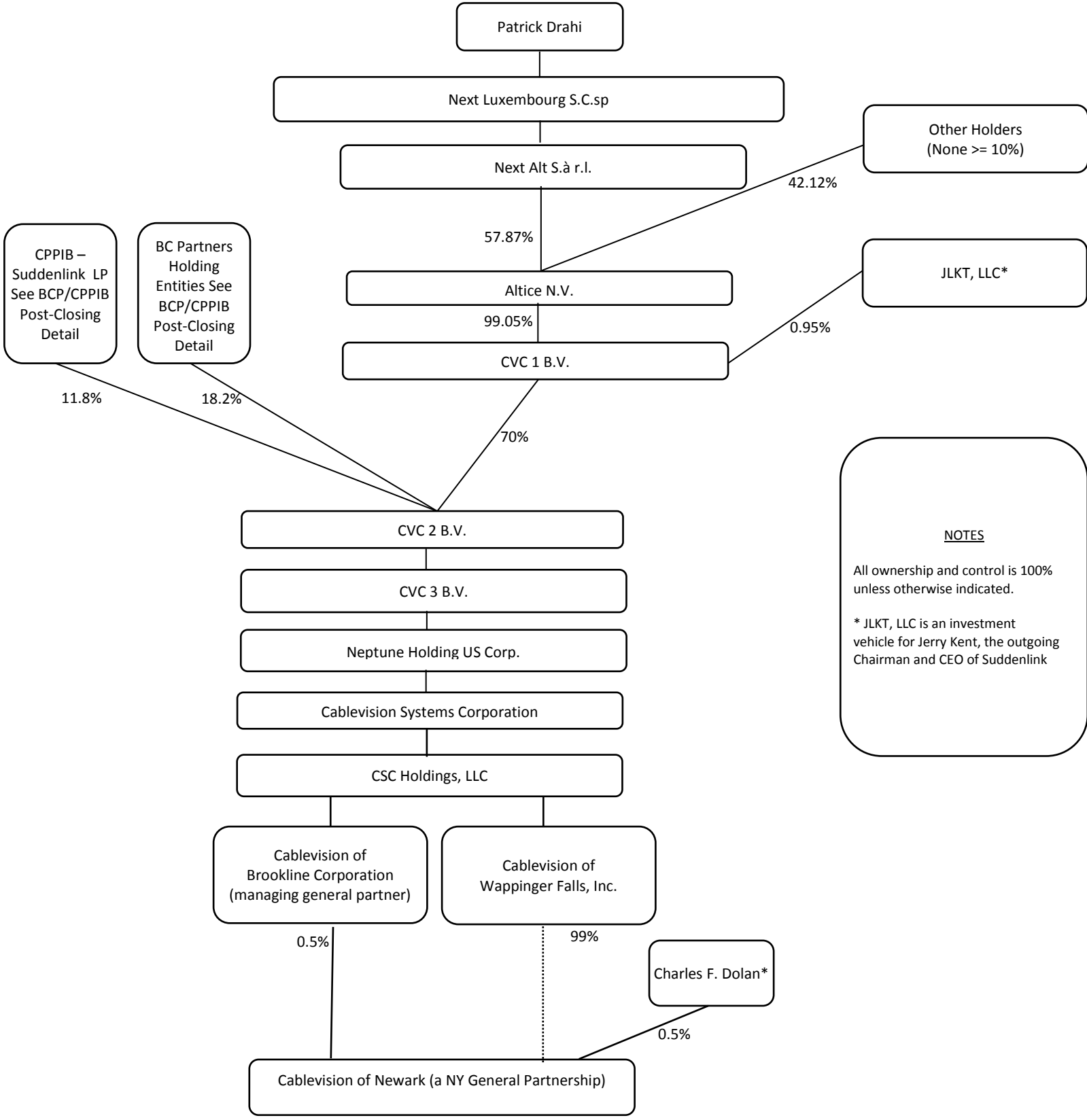


——— General Partner, Stockholder or Member

..... Limited Partner or Third Party Interests

* Subject to an agreement between CSC and CFD giving CSC the right to acquire such 0.5% interest at certain times for presented amounts.

Cablevision of Ossining Limited Partnership Post-Transaction Ownership Information



NOTES

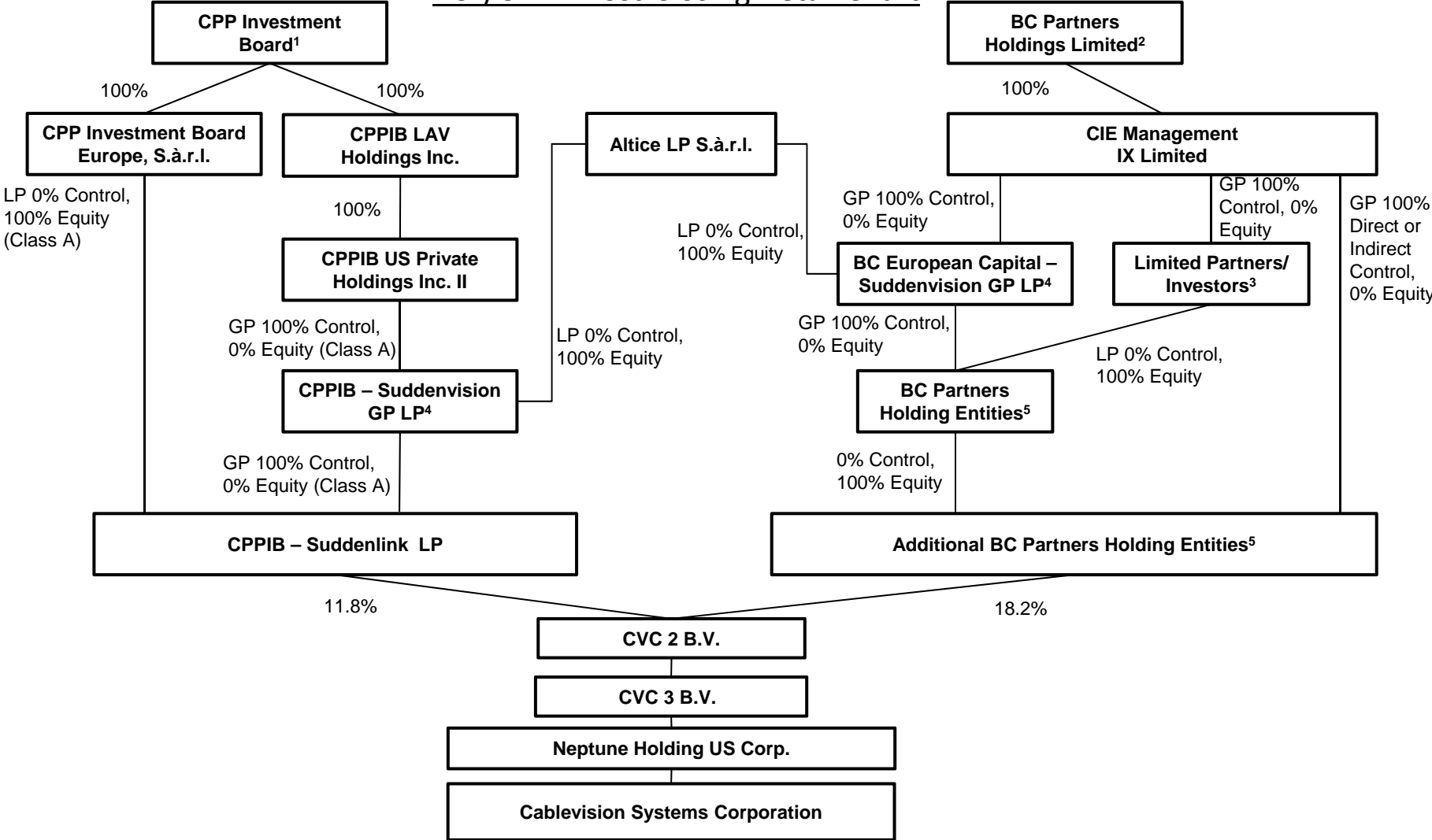
All ownership and control is 100% unless otherwise indicated.

* JLKT, LLC is an investment vehicle for Jerry Kent, the outgoing Chairman and CEO of Suddenlink

— General Partner, Stockholder or Member
 Limited Partner or Third Party Interests

* Subject to an agreement between CSC and CFD giving CSC the right to acquire such 0.5% interest at certain times for presented amounts.

BCP/CPPIB Post-Closing Detail Chart



- 1 CPP Investment Board is an investment management organization incorporated in Canada which invests the assets of the Canada Pension Plan.
- 2 BC Partners Holdings Limited is a limited corporation organized under the laws of Guernsey.
- 3 Consists of various BC Partners funds and co-invest entities. A *de minimis* (less than 5%) portion of the BC Partners equity interest in CVC 2 will be held through separate entities directly owned by BC Partners Holdings Limited.
- 4 At closing, the GP LP entities are expected to make small capital contributions to CPPIB - Suddenlink LP and the BC Partners Holding Entities, respectively, resulting in the GP LP entities receiving a *de minimis* amount of equity (less than 2%) in Class B shares. Certain affiliates of CPPIB and BCP hold *de minimis* Class C equity interests (\$1) in their respective GP LP with no control rights.
- 5 Consists of various limited partnerships and other intermediate holding entities directly or indirectly controlled by CIE Management IX Limited.