

**Exhibit F**  
**FCC Form 312**  
**Public Inspection Statement in Support of Pro Forma Transfer of Control**

Univision Communications Inc. (“UCI”) owns, through various indirectly-owned license subsidiaries, a number of full power television and radio stations. Through the instant application, eight companion FCC Form 312 applications, three FCC Form 603 applications (submitted through the FCC’s Wireless Bureau’s ULS), and twenty-one FCC Form 316 applications (submitted through the FCC’s Media Bureau’s CDBS), Univision seeks FCC consent to the *pro forma* transfer of control of PTI Holdings, Inc., including its licensee subsidiary KAKW License Partnership, L.P. (the “Licensee”), licensee of Domestic Satellite Earth Station E060016 (the “Station”) used with television station KAKW-DT, Kileen, TX, from Transferor Univision Communications Inc. (“UCI”) to UCI’s newly-formed and wholly-owned subsidiary Univision Local Media Inc. (“Transferee” or “UCI Local Media”). The intra-corporate restructuring will result from the *pro forma* insertion of new subsidiary UCI Local Media into the ownership chain between parent company UCI and its subsidiary PTI Holdings, Inc.<sup>1</sup>

As reflected in the Annex A “Before” diagram, the Licensee, a fourth tier subsidiary of UCI, is a wholly-owned subsidiary of Univision Texas Stations LLC, which is a wholly-owned subsidiary of Univision Television Group, Inc. Univision Television Group, Inc. is a wholly-owned subsidiary of PTI Holdings, Inc., which in turn is wholly-owned by UCI.

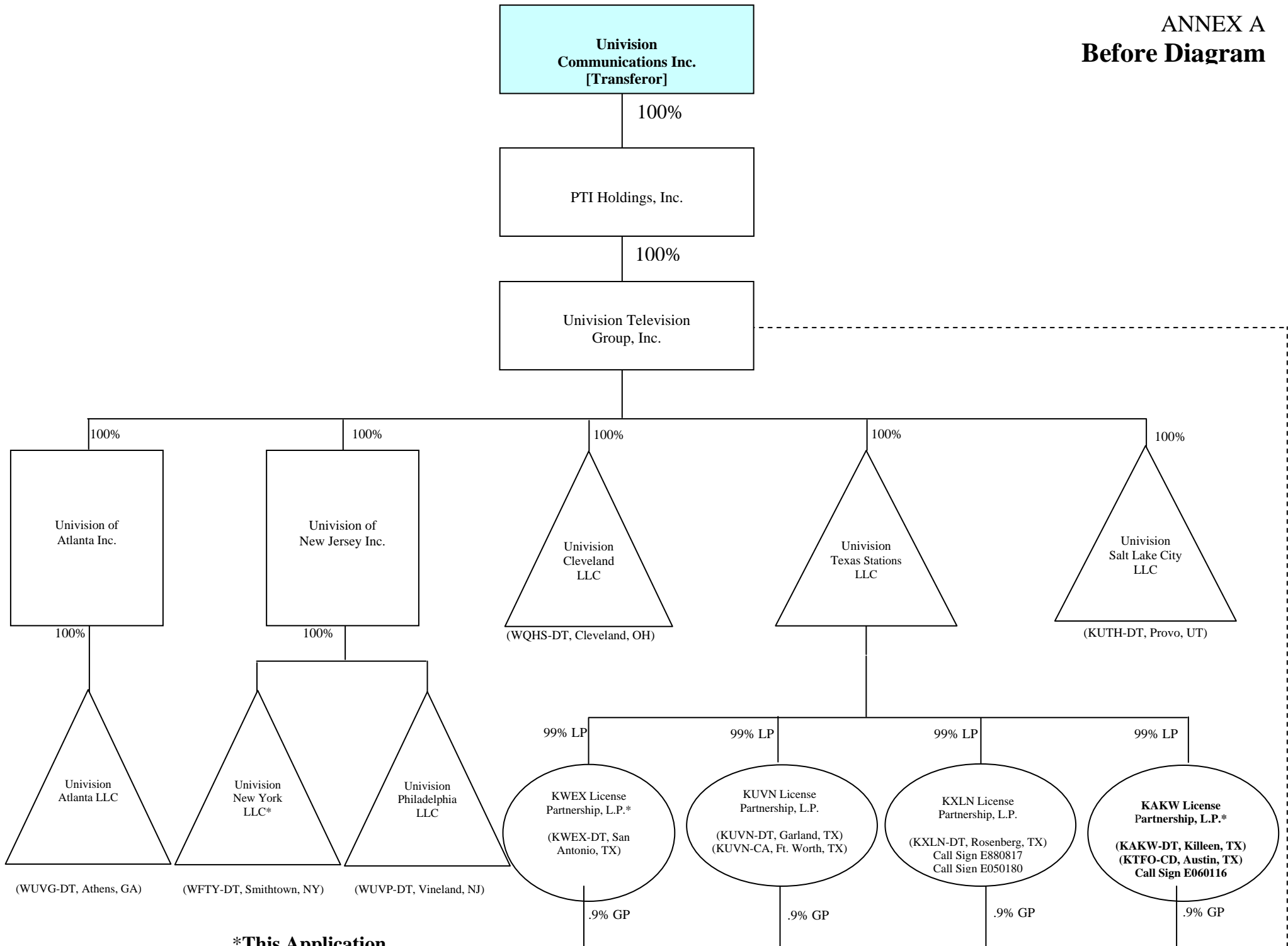
---

<sup>1</sup> PTI Holdings, Inc. is the intermediate parent company of 21 television station licensee subsidiaries of UCI.

As reflect in the Annex B “After” diagram, pursuant to the proposed intra-corporate restructuring, parent company UCI’s new direct and wholly-owned subsidiary UCI Local Media will become (following FCC consent to the proposed transaction) the immediate parent of PTI Holdings, Inc., and the Licensee will become a fifth, rather than fourth, tier subsidiary of UCI.

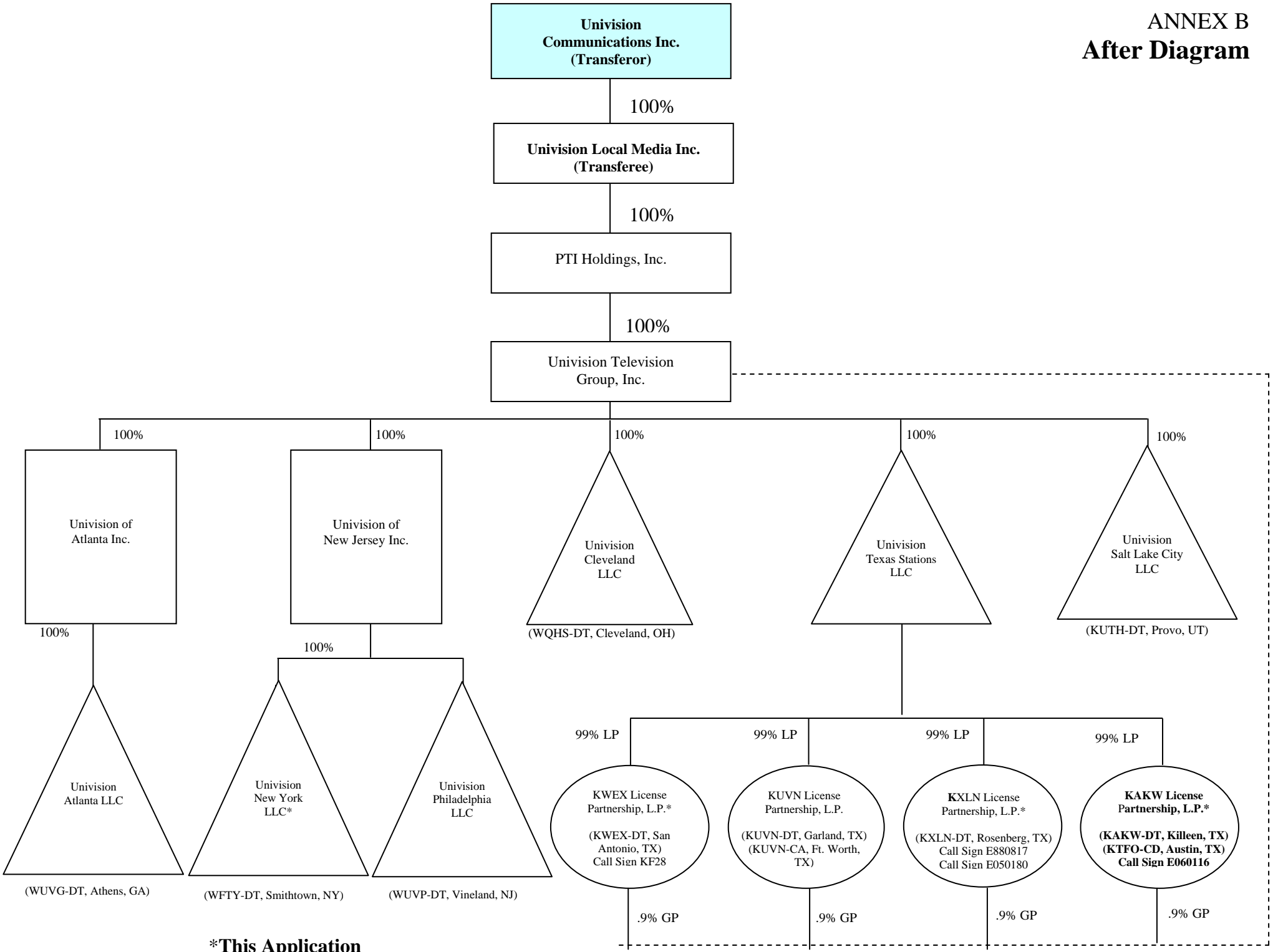
The station that is the subject of this application is used in connection with the provision of television broadcast services, and will be used in the same manner and for the same purposes following the pro forma transfer of control. Accordingly, the public interest would be served by prompt consent to this application.

# ANNEX A Before Diagram



**\*This Application**

**ANNEX B  
After Diagram**



**\*This Application**