

## OWNERSHIP INFORMATION

***(1) Name, address, citizenship, and primary business of the controlling entity and any intermediate subsidiaries or parties.***

American Samoa License, Inc. (“ASL”) is a wholly-owned, direct subsidiary of AST Telecom, LLC d/b/a Blue Sky Communications (“Blue Sky”), a Delaware limited liability company. Blue Sky’s address is: P.O. Box 478, Pago Pago, American Samoa 96799. Blue Sky’s principal business is providing communications services in American Samoa.

Blue Sky is a wholly-owned, direct subsidiary of eLandia International, Inc. (“eLandia International”), a Delaware corporation. eLandia International’s address is: 8200 NW 52nd Terrace, Suite 102, Miami, Florida 33166. eLandia International is a diversified holding company with investments in the information technology and communications sectors.

eLandia International’s only 10-percent-or-greater shareholder is Pete R. Pizarro, the Trustee of a Delaware voting trust that was established as part of a capital structure reorganization of eLandia International, and which holds the shares of eLandia International previously held by Stanford International Bank Ltd. (“SIBL”) (the “Voting Trust”). The Voting Trust currently holds 44.75 percent of the voting stock of eLandia International (and also holds non-voting preferred stock of eLandia International).<sup>1</sup> Mr. Pizarro, as the trustee of the Voting Trust, has the power and authority to vote the eLandia International common stock held by the Voting Trust. Mr. Pizarro controls 44.75 percent of eLandia International’s common stock as the trustee of the Voting Trust. Mr. Pizarro individually owns 2.75 percent of eLandia

---

<sup>1</sup> SIBL holds Voting Trust Certificates which entitle SIBL to dividends and distributions from eLandia International, if any, in respect of the shares SIBL deposited in the Voting Trust.

International's common stock. Accordingly, Mr. Pizarro controls 47.50 percent of the voting stock of eLandia International.

Mr. Pizarro is a U.S. citizen and is the Chief Executive Officer of eLandia International. Mr. Pizarro's address is: c/o eLandia International, Inc., 8200 NW 52nd Terrace, Suite 102, Miami, Florida 33166.

On February 16, 2009, the United District Court for the Northern District of Texas appointed a receiver for SIBL and R. Allen Stanford in connection with a lawsuit brought by the Securities and Exchange Commission ("the SEC Lawsuit").<sup>2</sup> Accordingly, the address for SIBL, Stanford Bank Holdings, Ltd., and R. Allen Stanford is Ralph S. Janvey, Receiver, Krage & Janvey LLP, 2100 Ross Avenue, Suite 2600, Dallas, Texas 75201.

**(2) Names, addresses, citizenship, and the percentage of voting and equity stock of those stockholders holding 10 percent or more of the controlling corporation's voting stock.**

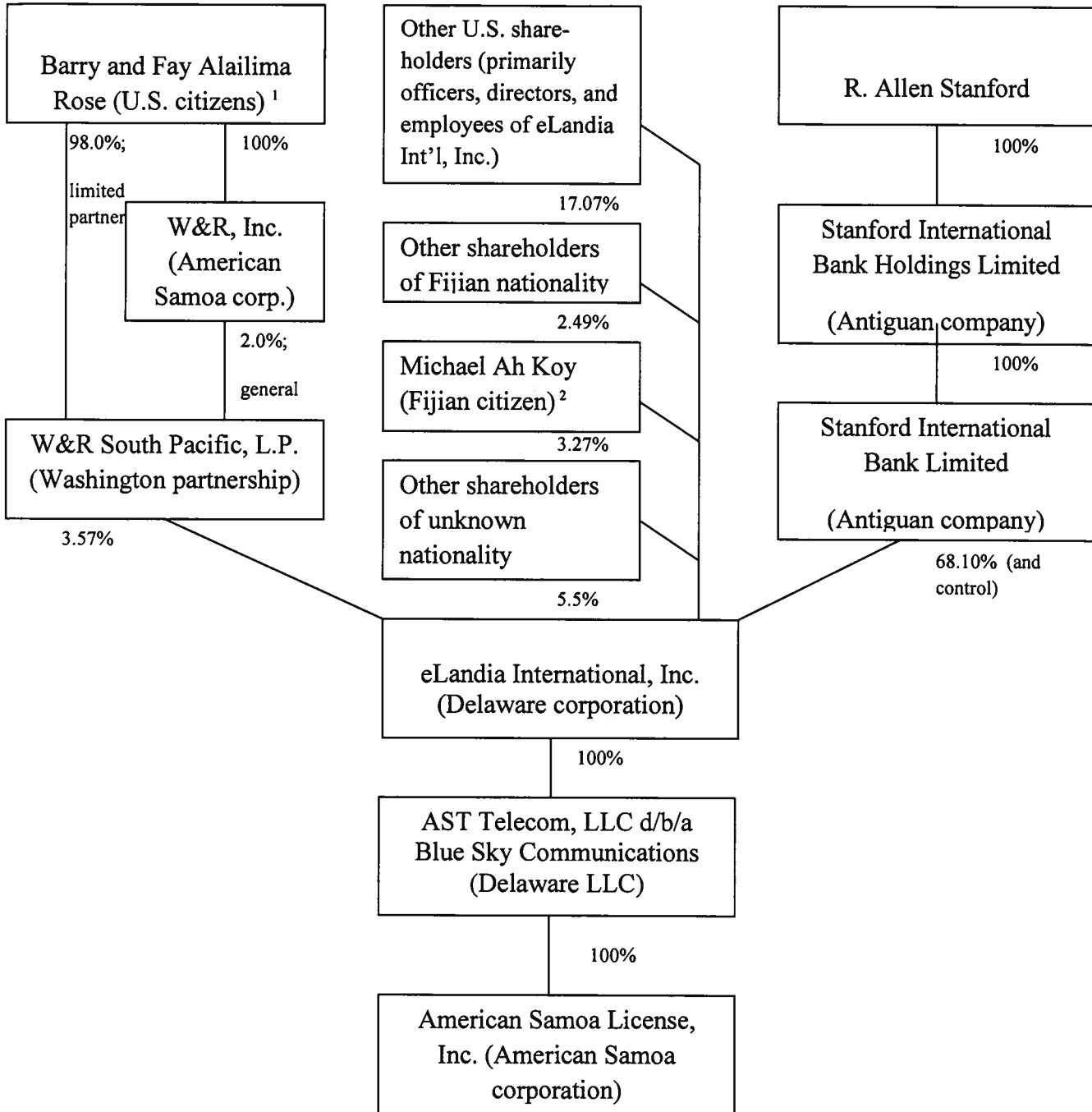
See response to Exhibit E, Question 1. The diagrams attached set forth the ownership of eLandia International, Inc. and ASL prior to and after the capital structure reorganization.

---

<sup>2</sup> *Securities and Exchange Commission v. Stanford Int'l Bank, Ltd.*, Case No. 3-09CV0298-N, pending in the United States District Court for the Northern District of Texas, Dallas Division.

**Diagram 1:**

**Ownership of eLandia International, Inc., eLandia Technologies, Inc.,  
and American Samoa License, Inc., Prior to Capital Structure  
Reorganization**



**Diagram 2:  
Current Ownership of eLandia International, Inc., eLandia Technologies, Inc., and American Samoa License, Inc.**

