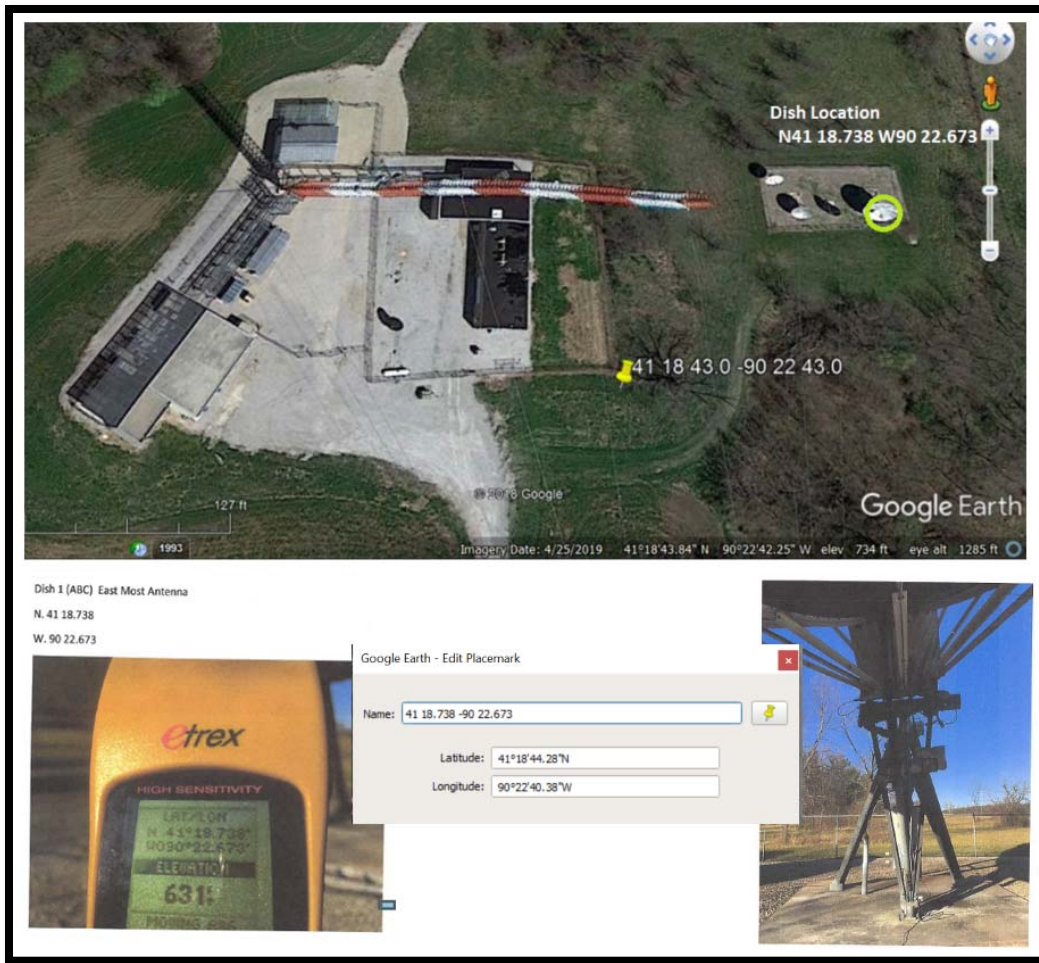


Coordinate Verification

The coordinates on the license authorization for the domestic fixed receive-only earth station E8190 are 41° 18' 43.0" N 90° 22' 43.0 W (41.311944 N 90.378611 W). Pursuant to Public Notice DA 17-1127, we provide photographic images confirming that the location of the earth station is within 3" of the licensed coordinates—at 41° 18' 44.28" N 90° 22' 40.38 W (41.3123 N 90.377883 W or 41 18.738 N 90 22.673 W, as shown in the photos).



In light of the foregoing, the license coordinates for E8190 should be corrected to 41° 18' 44.28" N 90° 22' 40.38" W (41.3123 N 90.377883 W), the GPS coordinates taken at the base of the antenna, which are within 3" of the licensed coordinates.