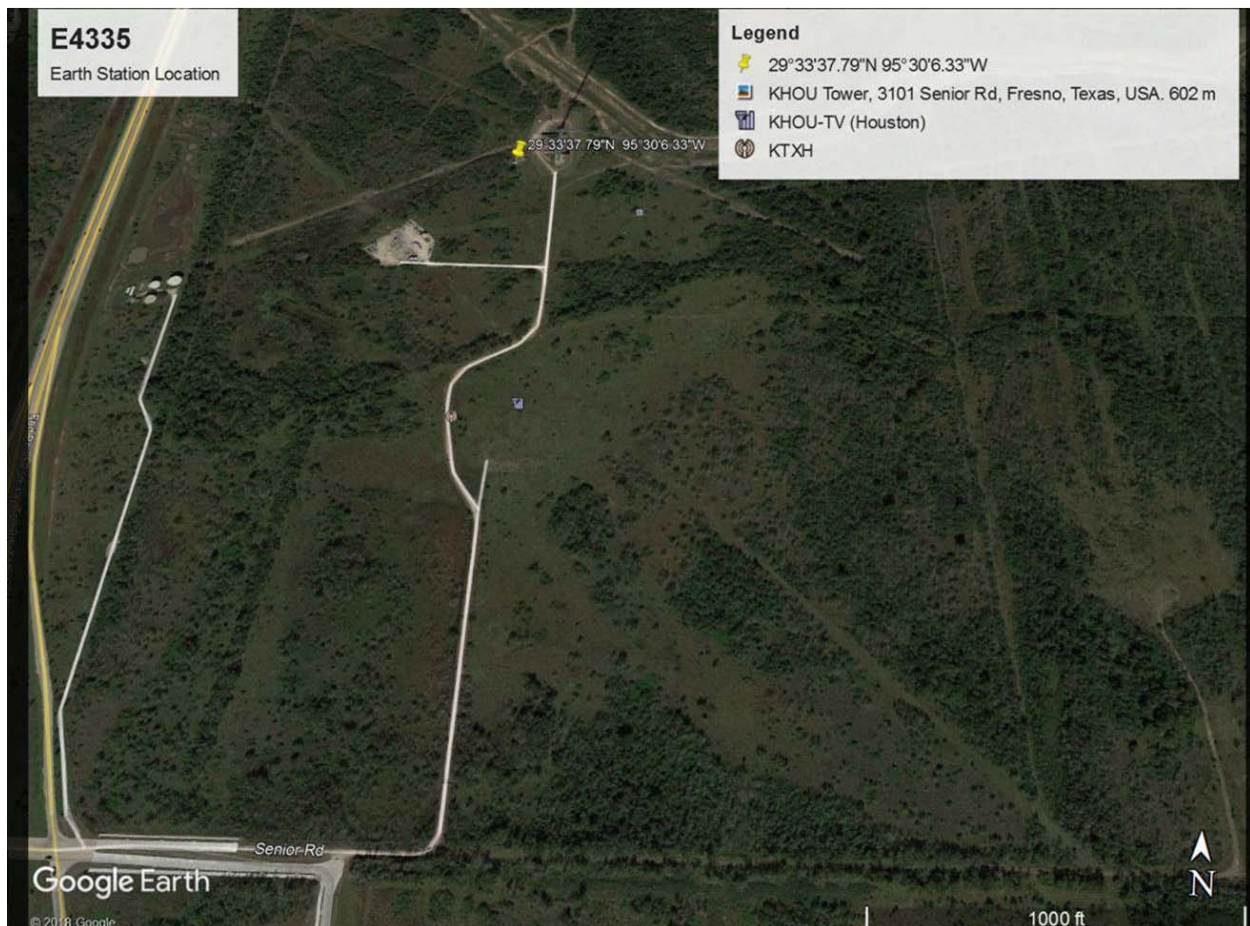


Coordinate Verification

The coordinates on the license authorization for the domestic fixed earth station E4335 are 29° 33' **25.0"** N 95° 30' **5.0"** W (29.55694 N 95.501389 W). In light of the more accurate GPS information detailed below, the earth station's coordinates should be modified to 29°33' **37.7"** N 95° 30' **6.3"** W (29.560472 N 95.50175 W).

Pursuant to Public Notice DA 17-1127, we provide the Google Earth® Map (below) showing the location of Earth Station E4335. According to Google Earth® maps (WGS84) the station is located at 29°33' 37.79" N 95° 30'6.33" W (29.560497 N 95.50178 W).



The images below confirm the physical location of the earth station to be at $29^{\circ} 33' 37.717''$ N $95^{\circ} 30' 06.287''$ W (29.560477 N 95.501746 W).

