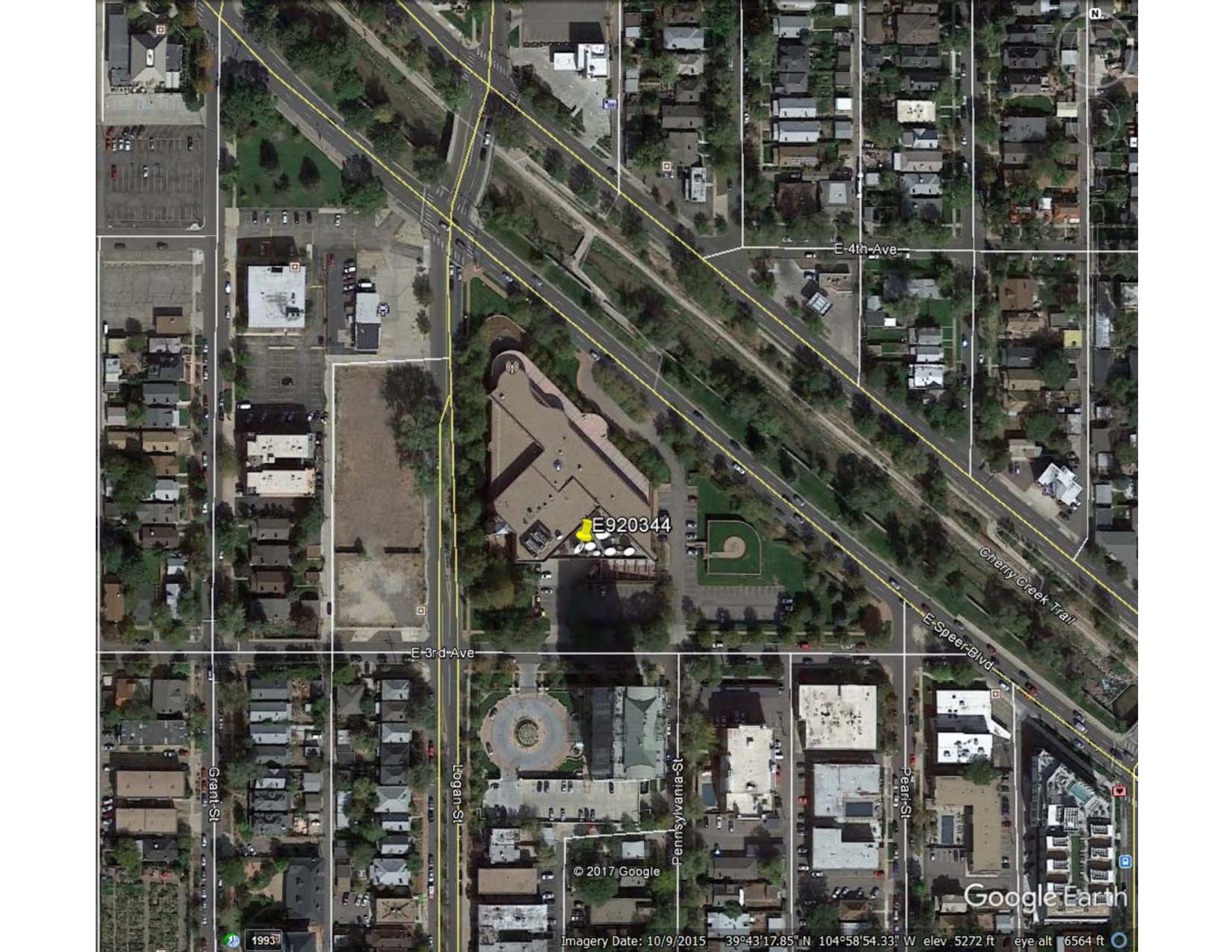


E920344
License Renewal

Coordinate Verification

Pursuant to Public Notice DA 17-1127, we provide the attached Google maps showing the location of Earth Station E920344. The coordinates on the license authorization are 39° 43' 17.0" N 104° 58' 54.9 W (39.721388889, 104.98194444).

Using Google mapping functions (WGS84) the licensed coordinates are verified to be accurate to within two seconds. Attached is a Google Earth map which verifies the location of the earth station. The second image, taken using Google's mobile cell phone application, shows the coordinates in close proximity to the earth station as 39° 43' 15.0" N 104° 58' 54.0 W (or 39.72083333, 104.98166667).



E920344

E 4th Ave

E 3rd Ave

Cherry Creek Trail

E Speer Blvd

Grant St

Logan St

Pennsylvania St

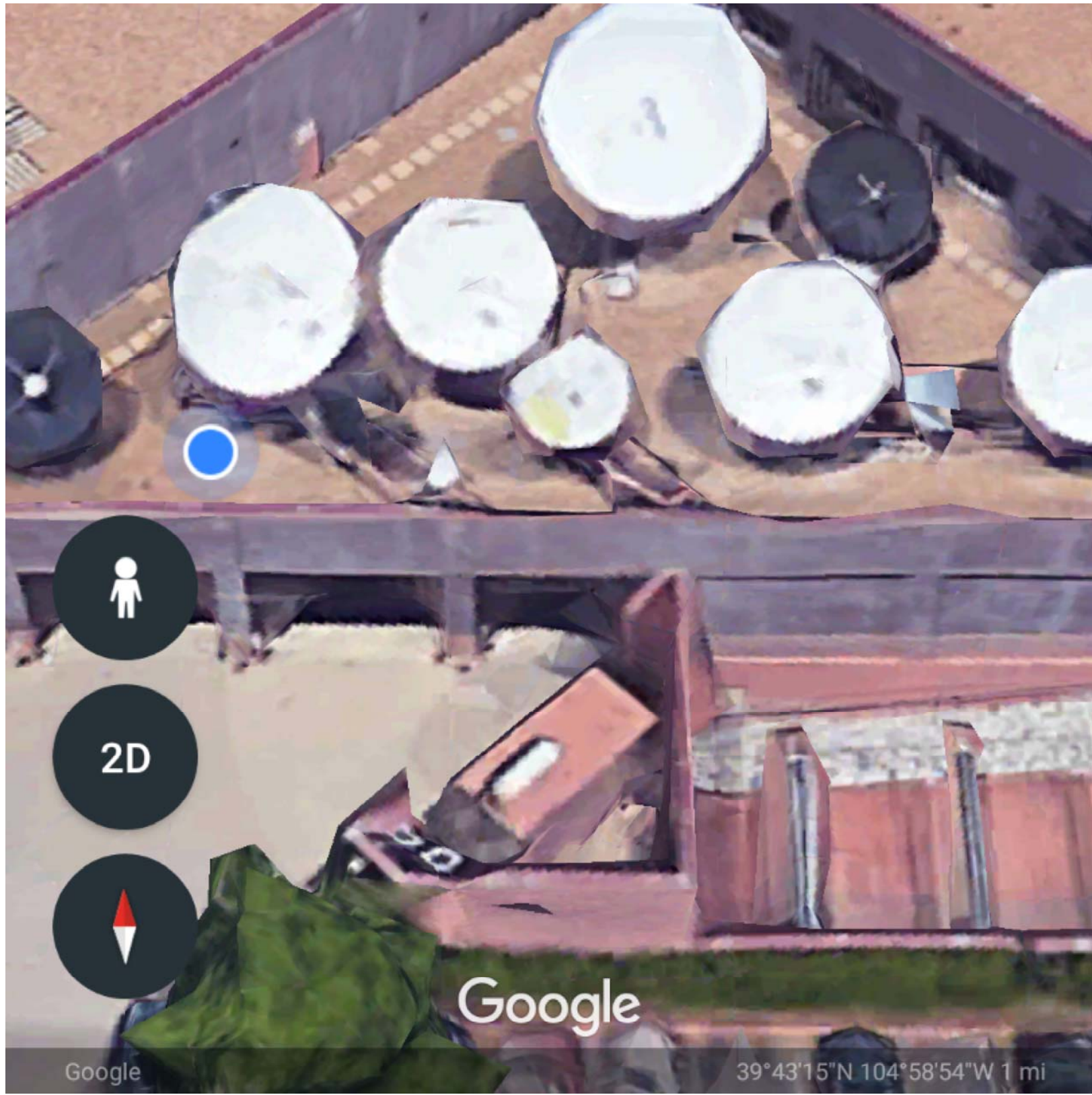
Pearl St

© 2017 Google

Google Earth

1993

Imagery Date: 10/9/2015 39°43'17.85" N 104°58'54.33" W elev 5272 ft eye alt 6564 ft



Google

Google

39°43'15"N 104°58'54"W 1 mi