

PLEADING TO CORRECT RECEIVE-ONLY EARTH STATION SITE INFORMATION

To Whom It May Concern:

Reference earth station registration for Bright House Networks, LLC
FRN 0007508237
Call sign: WX52 in Eufaula, AL

The coordinates for this registration are stored in IBFS as NAD27 values. Converting them to NAD83 allows for more precise mapping, but they are still slightly inaccurate. The approximately 175-ft. discrepancy is apparently due to a slight mis-calculation of the site coordinates, having been obtained using USGS Topographic maps at the time.

The actual NAD83 coordinates of this active station, from Google Earth, are:
31° 54' 48.1" N Latitude
85° 10' 36.8" W Longitude
Elevation: 136.6 meters (448 ft.)

Registrant requests correction in the IBFS record.

Sincerely,

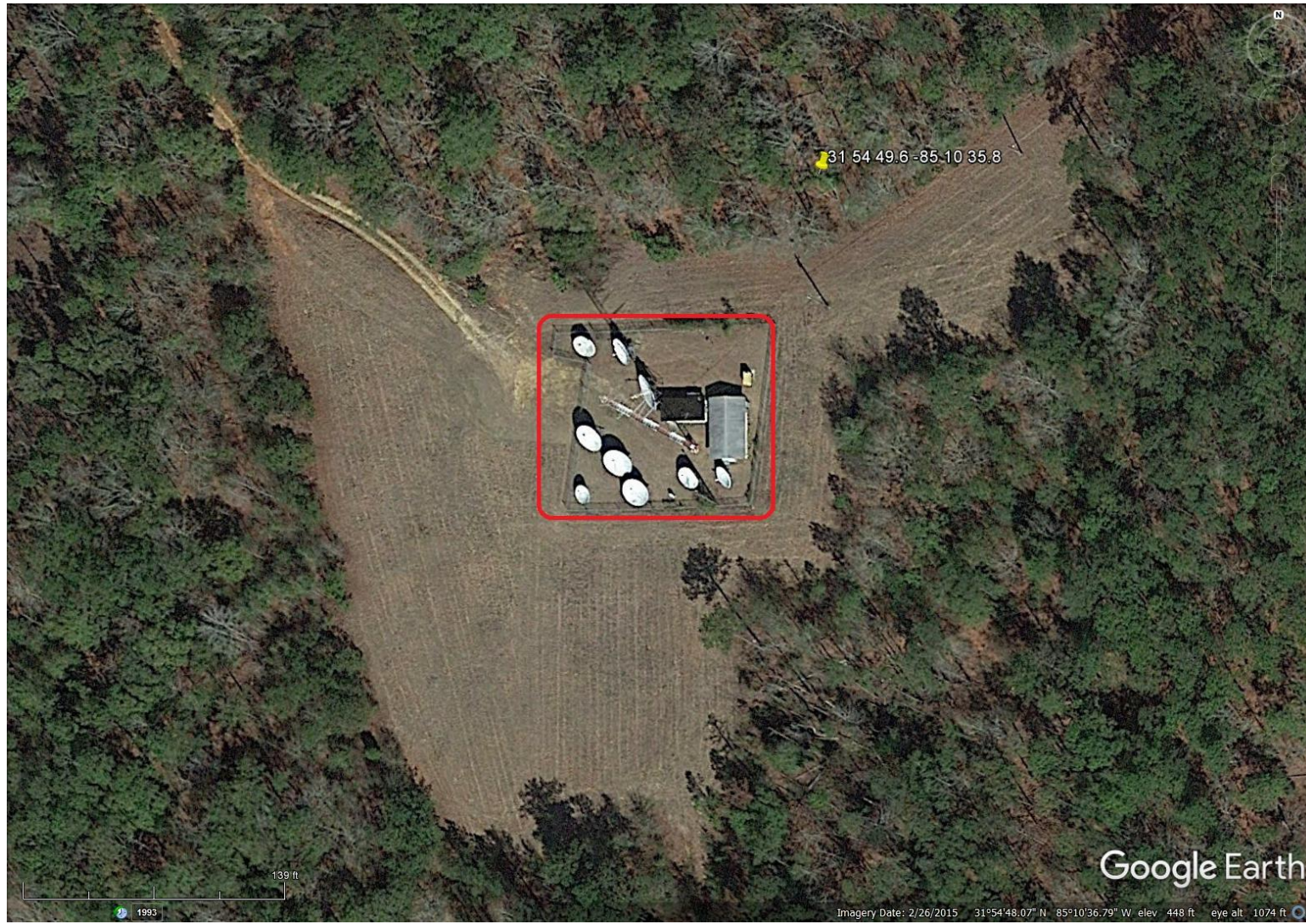


Steve Flessner | Manager, FCC Relations | 303.323.6020
CharterFCC@Charter.com

WX52 – Eufaula, AL

Yellow pushpin is the IBFS coordinates converted to NAD83

Red rectangle is actual site



Output from NADCON for station

North American Datum Conversion

NAD 27 to NAD 83

NADCON Program Version 2.11

=====

Transformation #: 1 Region: Conus

	Latitude	Longitude
NAD 27 datum values:	31 54 49.00000	85 10 36.00000
NAD 83 datum values:	31 54 49.57636	85 10 35.75885
NAD 83 - NAD 27 shift values:	0.57636	-0.24115 (secs.)
	17.753	-6.336 (meters)
Magnitude of total shift:		18.849 (meters)



[NGS HOME PAGE](#)