

TOWAIR Determination Results

A routine check of the coordinates, heights, and structure type you provided indicates that this structure does not require registration.

*** NOTICE ***

TOWAIR's findings are not definitive or binding, and we cannot guarantee that the data in TOWAIR are fully current and accurate. In some instances, TOWAIR may yield results that differ from application of the criteria set out in 47 C.F.R. Section 17.7 and 14 C.F.R. Section 77.13. A positive finding by TOWAIR recommending notification should be given considerable weight. On the other hand, a finding by TOWAIR recommending either for or against notification is not conclusive. It is the responsibility of each ASR participant to exercise due diligence to determine if it must coordinate its structure with the FAA. TOWAIR is only one tool designed to assist ASR participants in exercising this due diligence, and further investigation may be necessary to determine if FAA coordination is appropriate.

DETERMINATION Results

PASS SLOPE(100:1): NO FAA REQ-RWY MORE THAN 10499 MTRS & 7596.83 MTRS (7.5968 KM) AWAY

Type	C/R	Latitude	Longitude	Name	Address	Lowest Elevation (m)	Runway Length (m)
AIRP	R	46-43-30.00N	092-02-51.00W	SKY HARBOR	ST LOUIS DULUTH, MN	183.5	3048.0

Your Specifications

NAD83 Coordinates

Latitude 46-47-04.2 north
Longitude 092-05-47.2 west

Measurements (Meters)

Overall Structure Height (AGL) 17.7
Support Structure Height (AGL) 10.5
Site Elevation (AMSL) 185.4

Structure Type

BANT - Building with Antenna on top

[Tower Construction Notifications](#)

Notify Tribes and Historic Preservation Officers of your plans to build a tower.

CLOSE WINDOW

ELEVATION DATA

Building Height - Lower Roof: 7.5 m

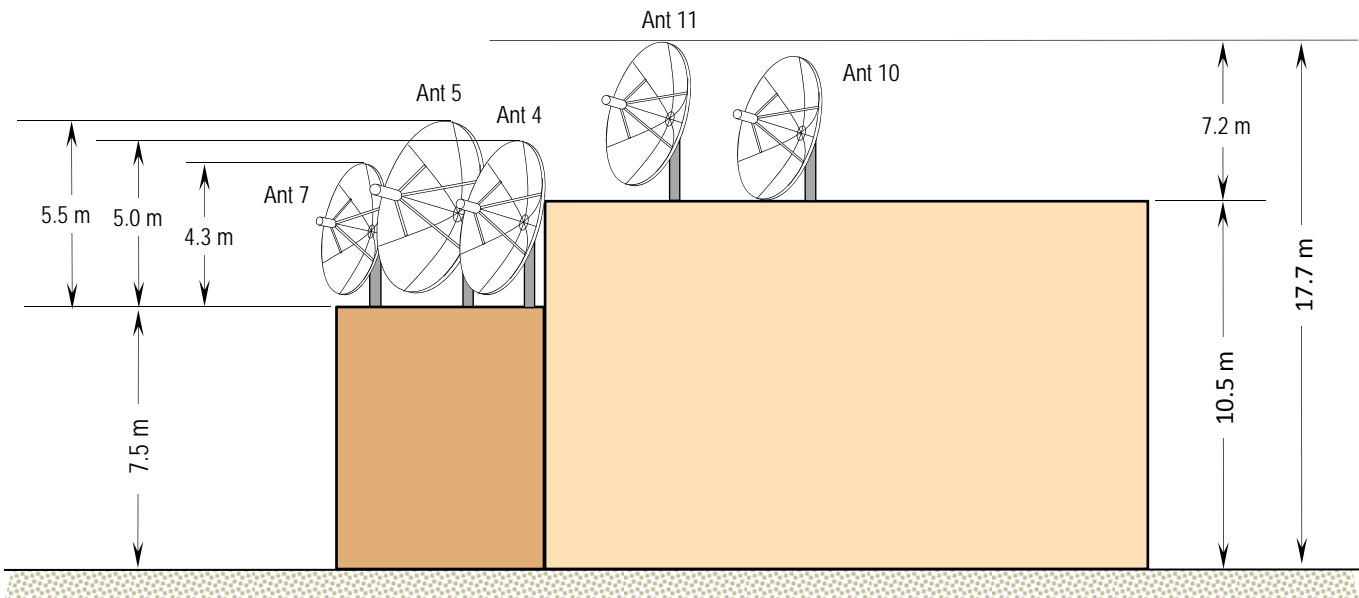
Max. Antenna Ht. Above Lower Roof

Antenna 4 - AFC 4.5m: 5.0 m
 Antenna 5 - DH 5.0m: 5.5 m
 Antenna 7 - Comtech 3.8m: 4.3 m

Building Height - Upper Roof: 10.5 m

Max. Antenna Ht. Above Upper Roof

Antenna 10 - DH 4.2m: 5.7 m
 Antenna 11 - DH 4.2m: 7.2 m



246 South Lake Ave. 185.4 m AMSL

Not to Scale

NAD 83

Latitude: 46° 47' 04.20" N

Longitude: 92° 05' 47.22" W



TELECOMMUNICATIONS CONSULTING
 P.O. Box 881 Silver Spring, Maryland 20918-0881

ELEVATION DRAWING

KBJR-TV DULUTH, MN

Main Studios

July 2018