

APPLICATION

SES Government Solutions, Inc. ("SES-GS") requests modification of its license for earth station call sign KE27 in Monterey, California to update the coordinates. Pursuant to Section 25.117(c) of the Commission's rules, SES-GS is providing herein information that is changing as a result of the modification and certifies that the remaining information reflected in the KE27 license has not changed.

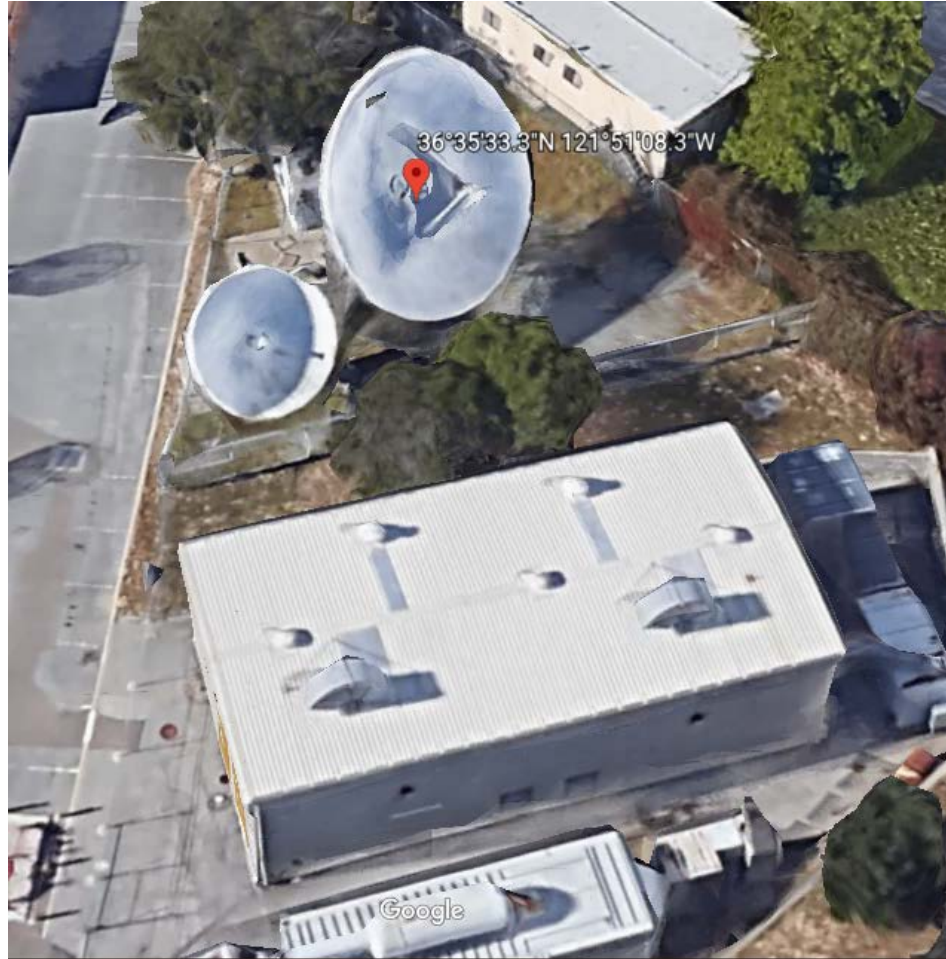
The Commission has stated that in order to improve the accuracy of the International Bureau Filing System ("IBFS"), it recommends that earth station licensees use World Geodetic System 1984 ("WGS84") datum to specify site coordinates and has suggested that applicants for renewal or modification of earth station licenses provide coordinates based on WGS84.¹ For call sign KE27, the coordinates according to WGS84 are as follows:

36° 35' 33.3" N, 121° 51' 08.3" W

SES-GS has supplied these coordinates in items E11 and E12 of the Form 312 Schedule B.

Below is a Google Earth screen shot confirming the presence of the two licensed antennas at these coordinates.

¹ See International Bureau Addresses Accuracy of Earth Station Location Information in IBFS, DA 17-1127, rel. Nov. 21, 2017.



This modification merely reflects an update to WGS84 coordinates for an earth station that has been licensed and operational since the late 1970's. No other change to the license is being sought. Furthermore, there have been no complaints regarding interference relating to the operations of KE27, nor has SES-GS experienced unacceptable interference. Because the earth station has been successfully operating since it was originally coordinated and licensed, no new coordination report should be required.