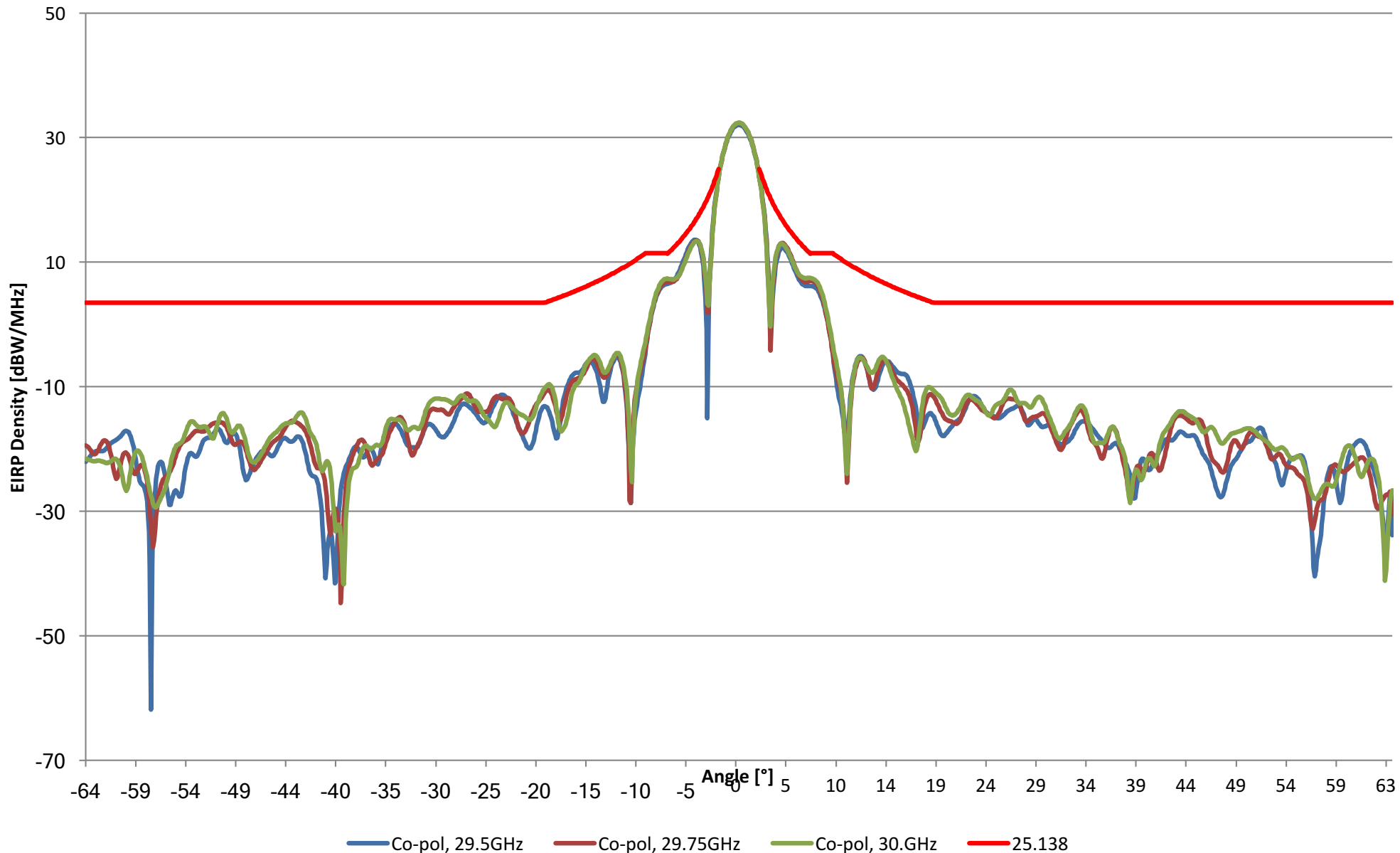


Exhibit B

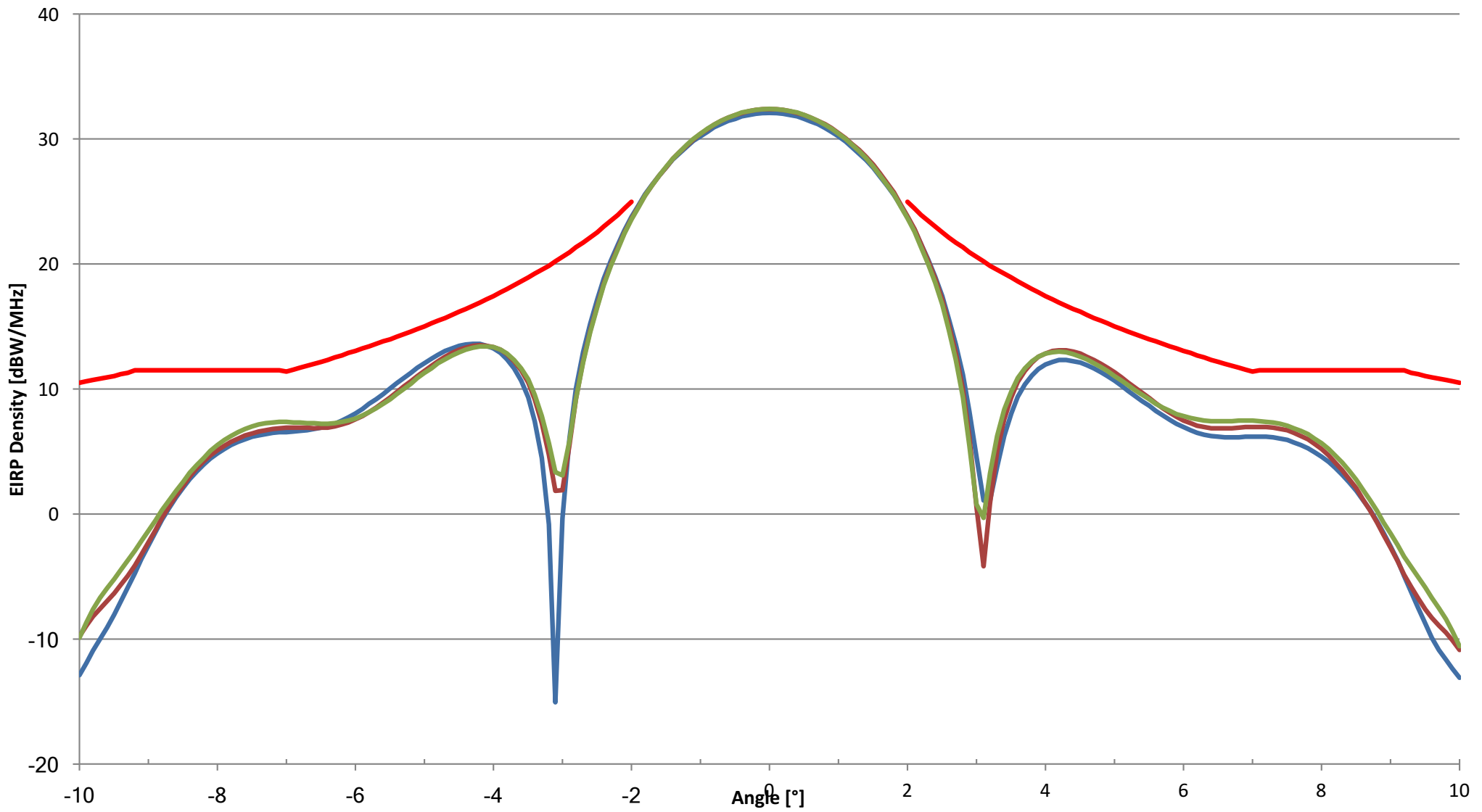
RHCP Co-polarized EIRP Density [dBW/MHz]

Azimuth Cut



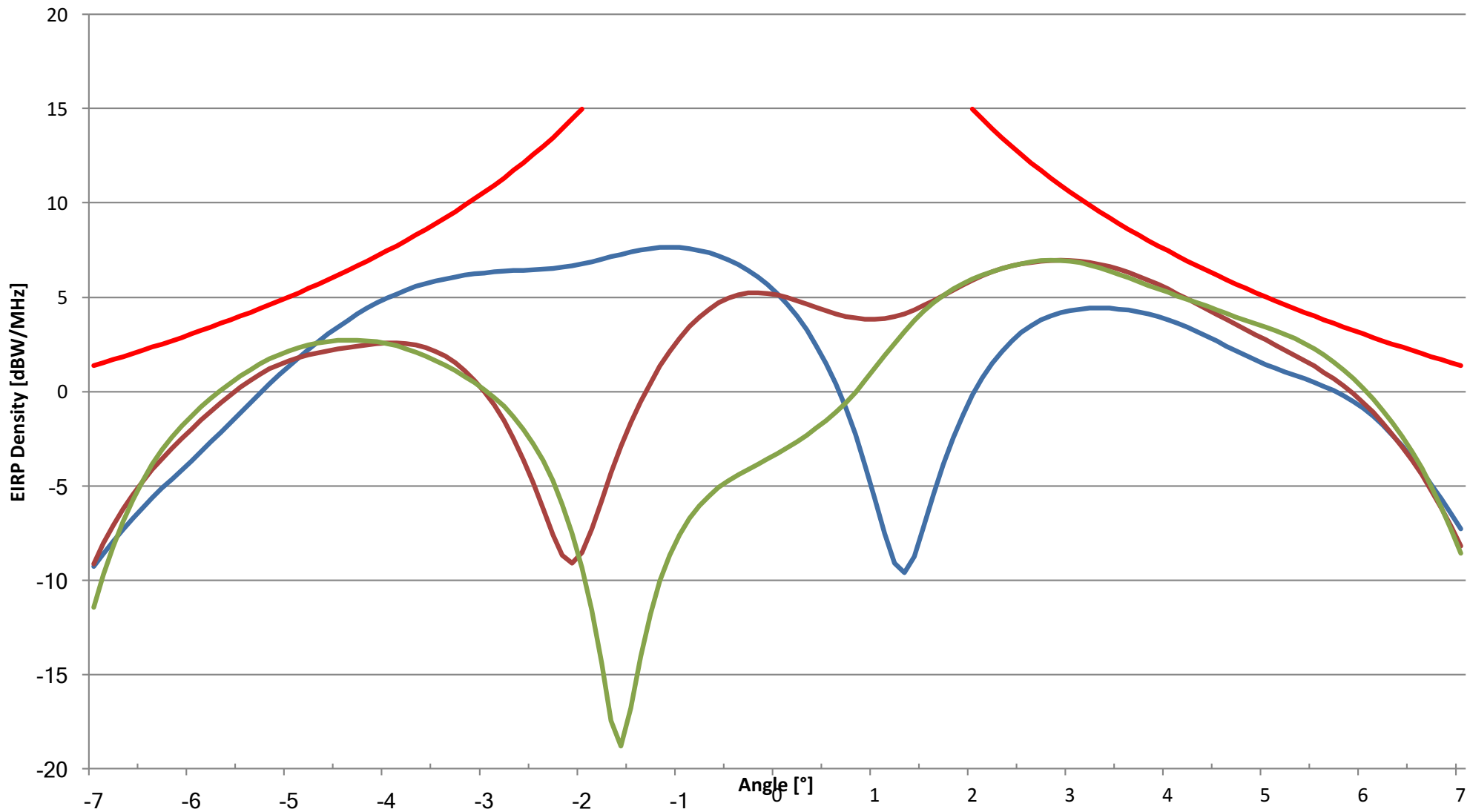
RHCP Co-polarized EIRP Density [dBW/MHz]

Azimuth Cut



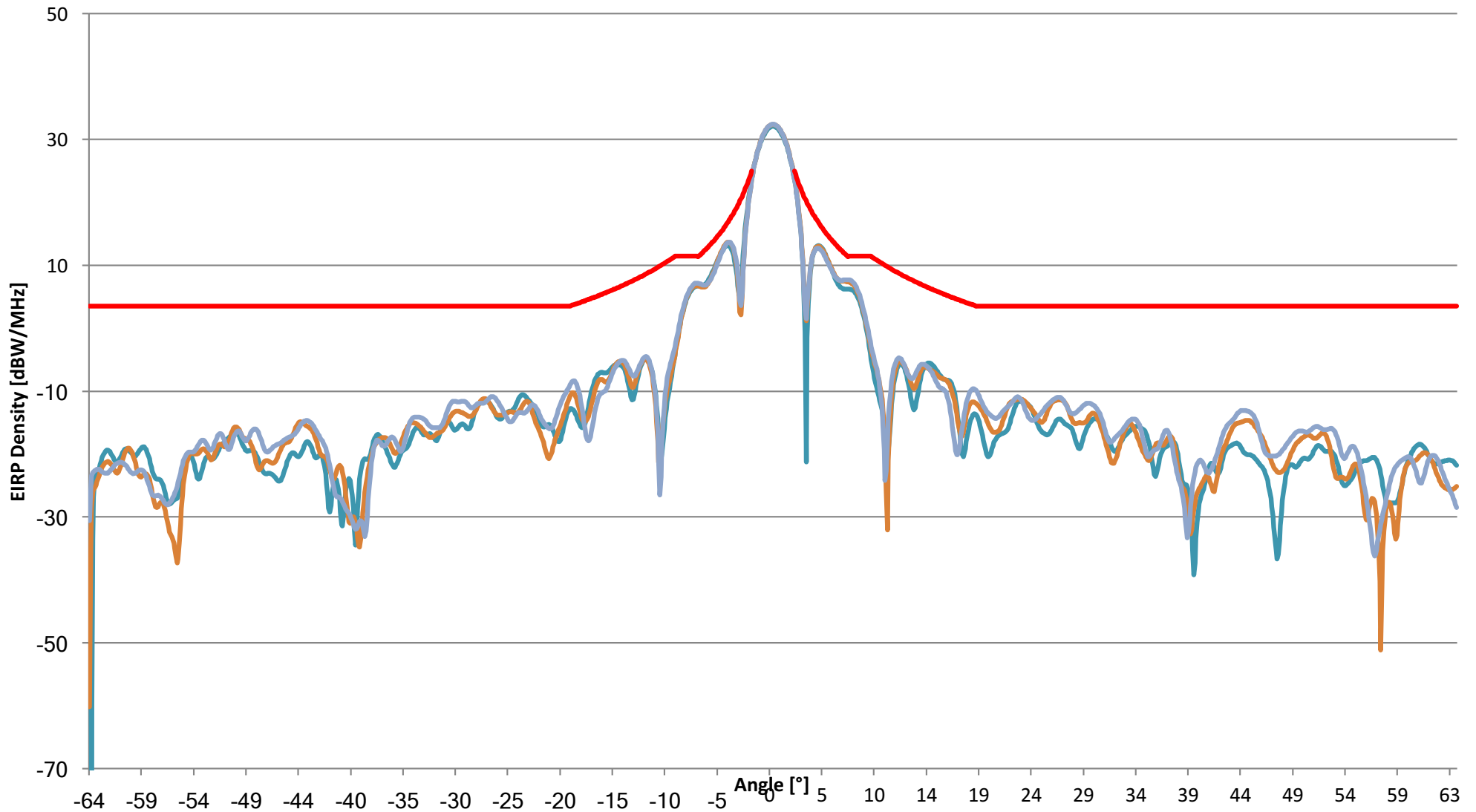
Co-pol, 29.5GHz Co-pol, 29.75GHz Co-pol, 30.GHz 25.138

RHCP Cross-polarized EIRP Density [dBW/MHz] Azimuth Cut



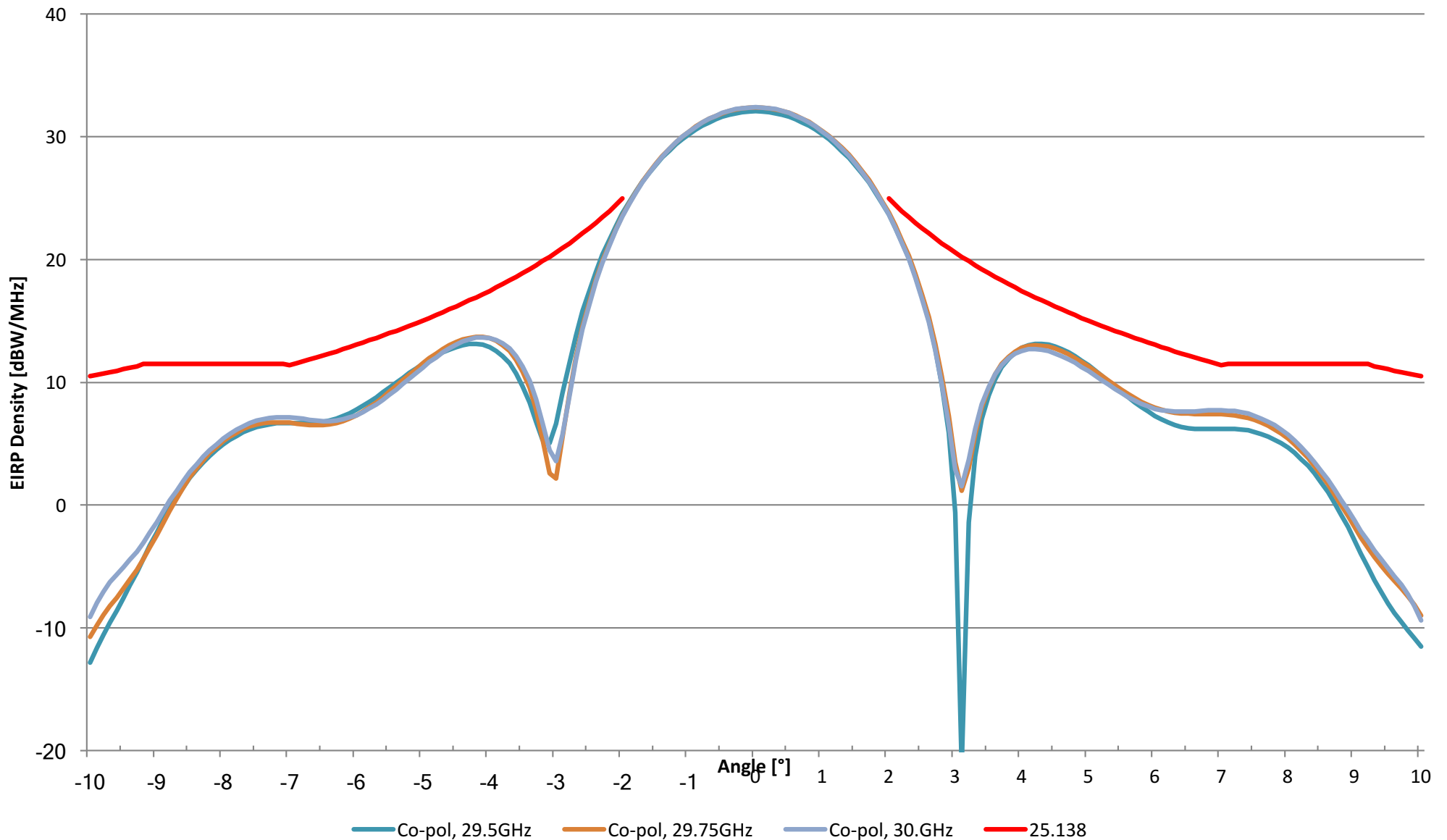
X-pol, 29.5GHz X-pol, 29.75GHz X-pol, 30.GHz 25.138

RHCP Co-polarized EIRP Density [dBW/MHz] Elevation Cut

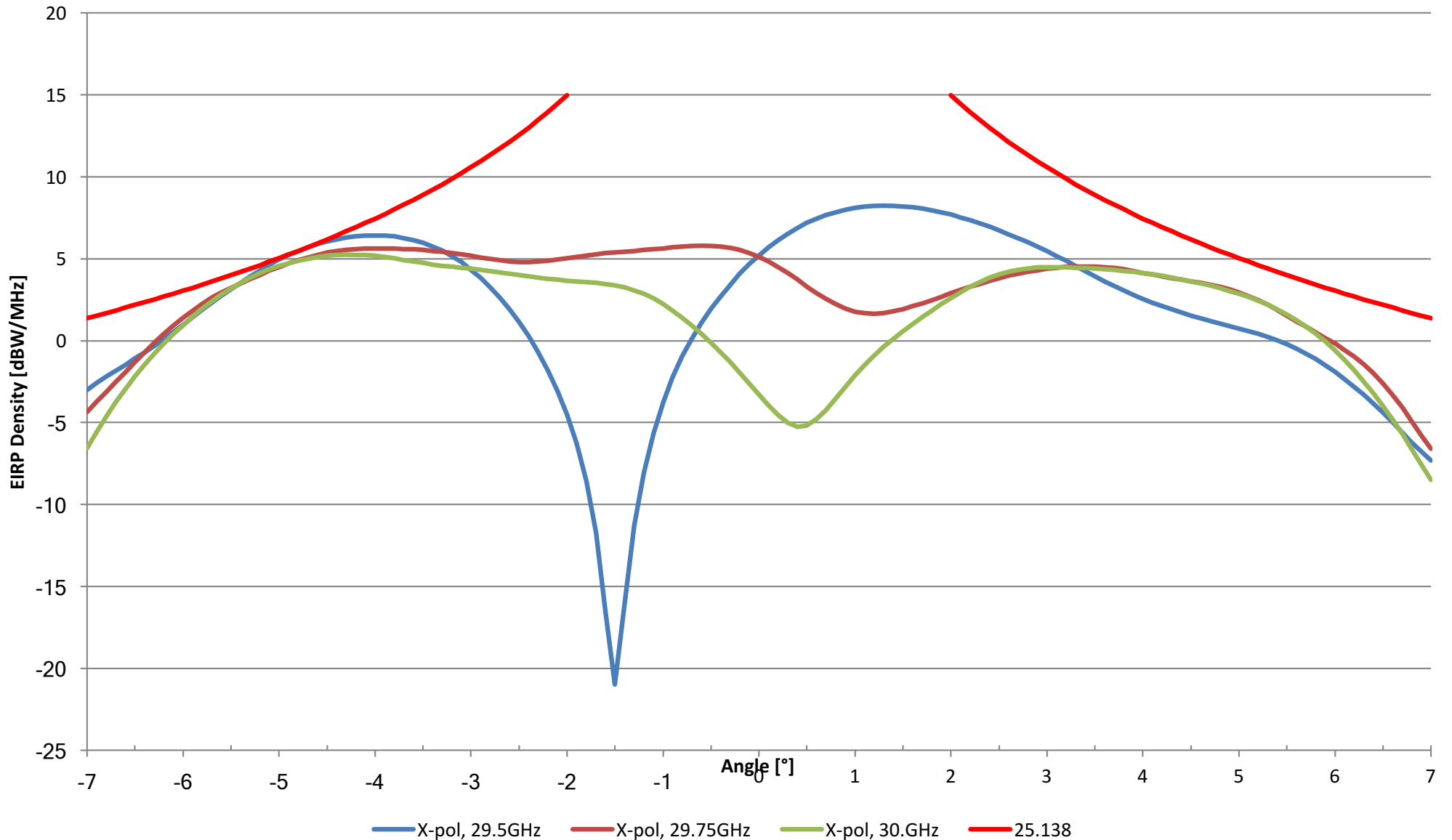


Co-pol, 29.5GHz Co-pol, 29.75GHz Co-pol, 30.GHz 25.138

RHCP Co-polarized EIRP Density [dBW/MHz] Elevation Cut



RHCP Cross-polarized EIRP Density [dBW/MHz] Elevation Cut



LHCP Co-polarized EIRP Density [dBW/MHz] Azimuth Cut

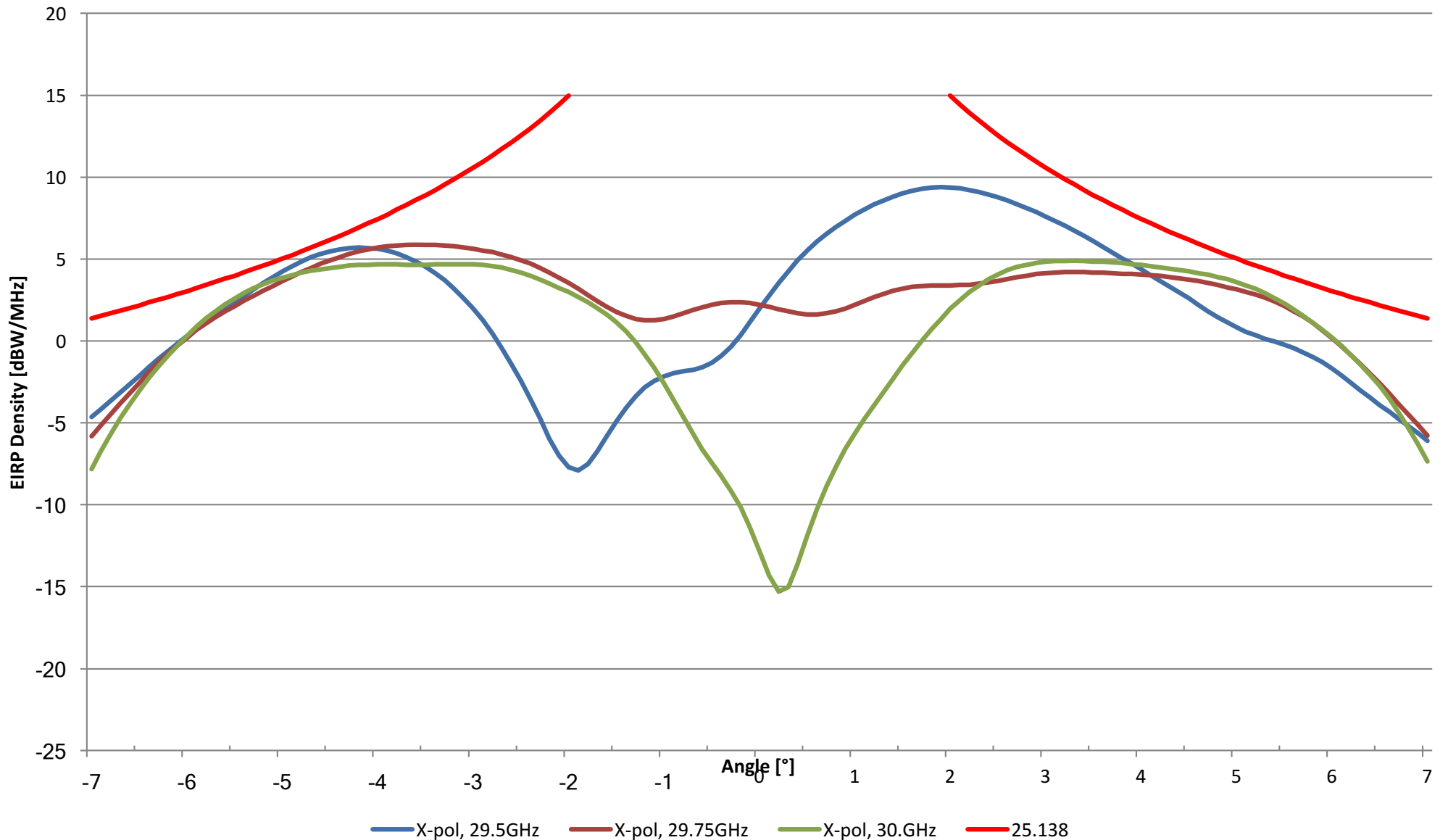


— Co-pol, 29.5GHz — Co-pol, 29.75GHz — Co-pol, 30.GHz — 25.138

LHCP Co-polarized EIRP Density [dBW/MHz] Azimuth Cut



LHCP Cross-polarized EIRP Density [dBW/MHz] Azimuth Cut

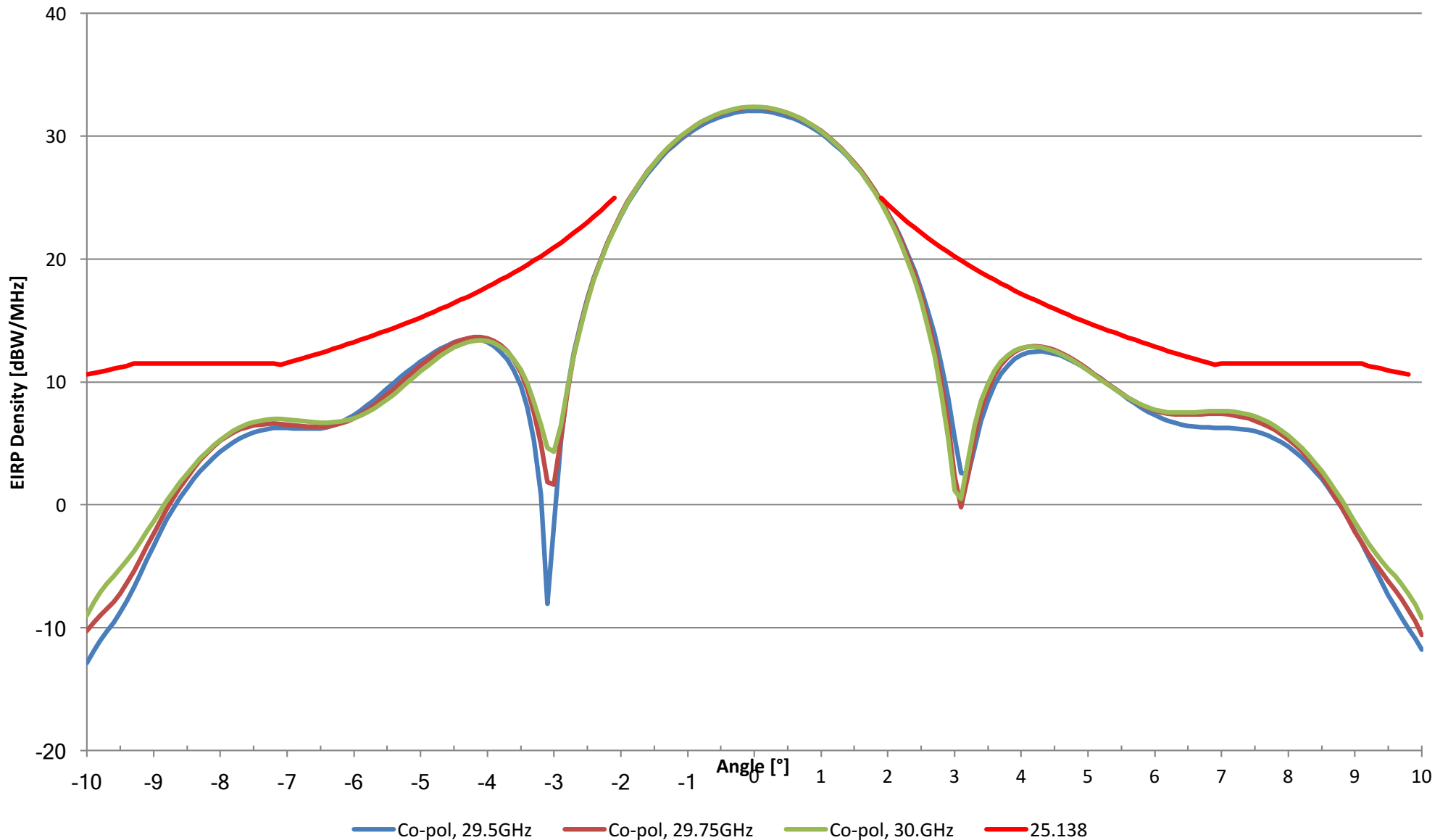


LHCP Co-polarized EIRP Density [dBW/MHz] Elevation Cut



Co-pol, 29.5GHz Co-pol, 29.75GHz Co-pol, 30.GHz 25.138

LHCP Co-polarized EIRP Density [dBW/MHz] Elevation Cut



LHCP Cross-polarized EIRP Density [dBW/MHz] Elevation Cut

