

Exhibit C – EIRP Density Plots

Plot notes:

Reference Clear Sky EIRP is 41 dBW

Reference Modulated bandwidth is 1.6 MHz

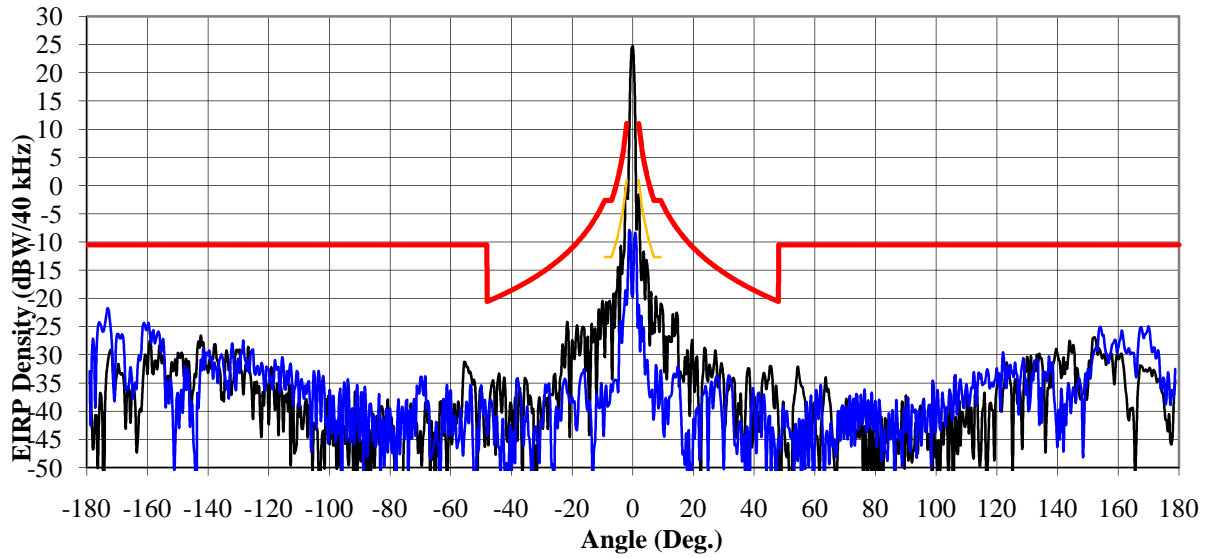
Black trace is co-polarization EIRP density plot

Blue trace is cross-polarization EIRP density plot

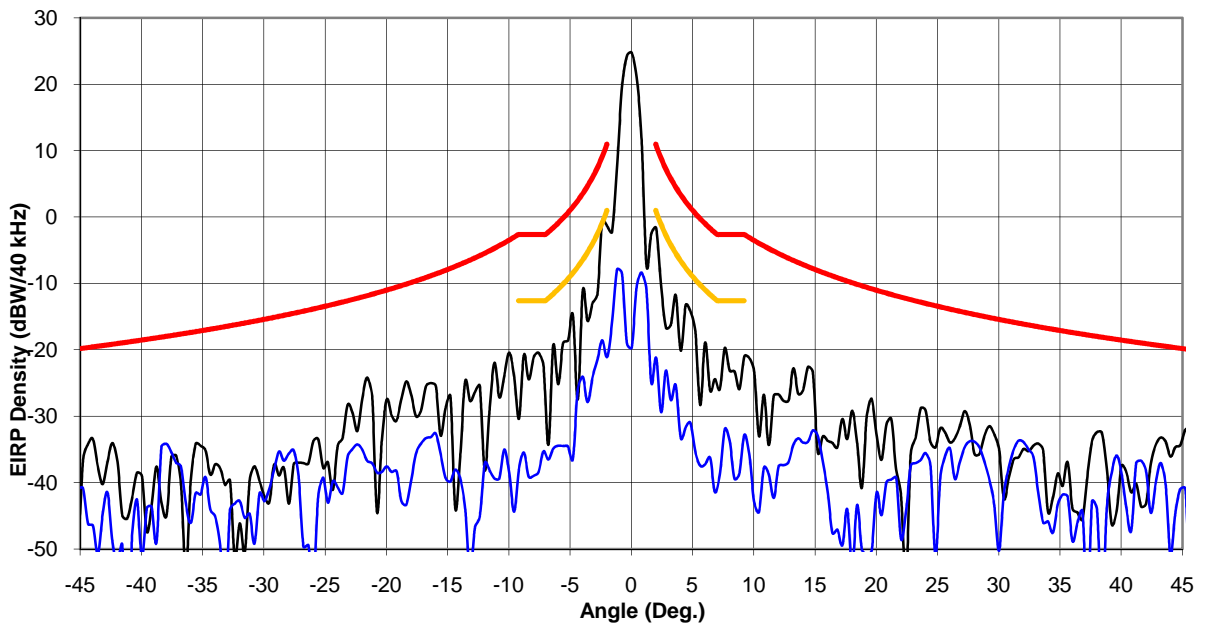
Red trace is FCC 25.138(a)(1) co-polarization EIRP density mask

Yellow trace is FCC 25.138(a)(4) cross-polarization EIRP density mask

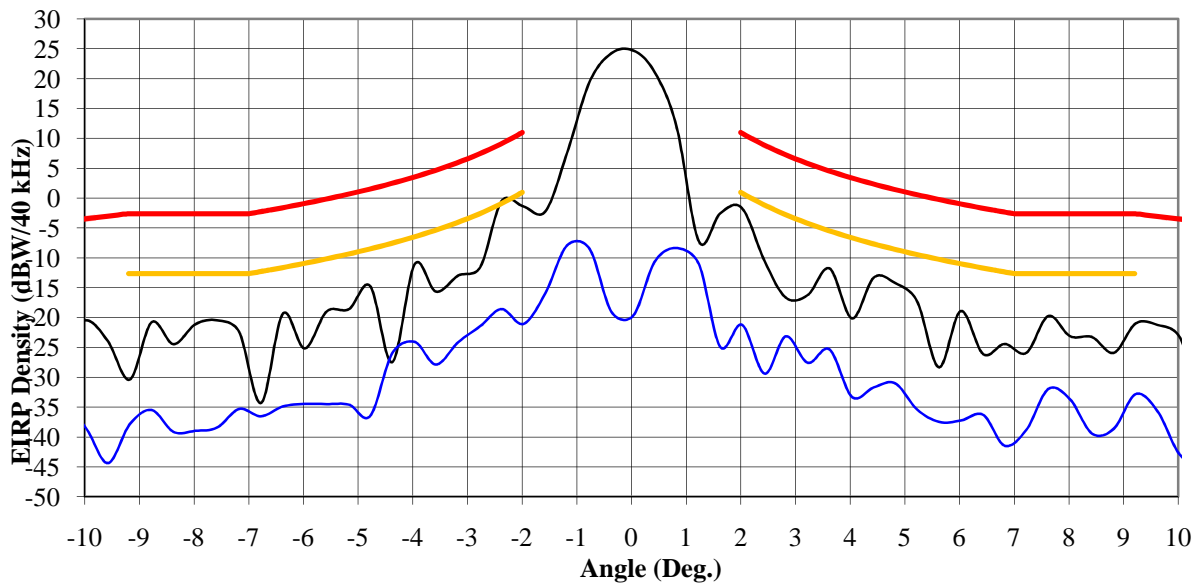
**Surfbeam-2 User Terminal
Tx Az 29.50 GHz LHC**



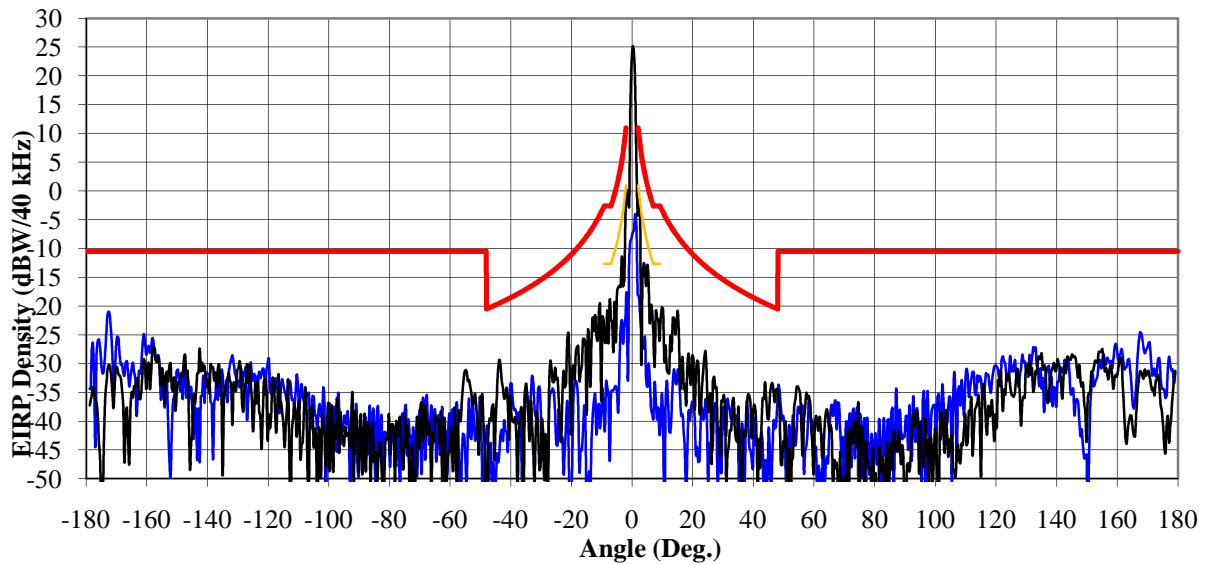
**Surfbeam-2 User Terminal
TX Az 28.50 GHz LHC**



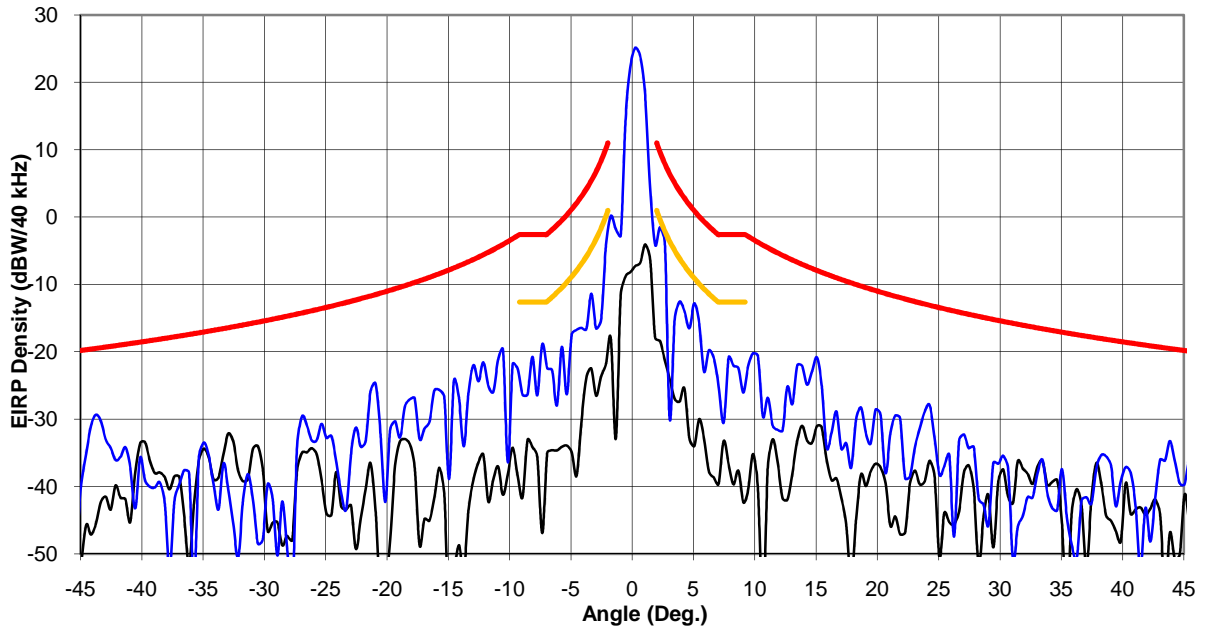
**Surfbeam-2 User Terminal
Tx Az 29.50 GHz LHC**



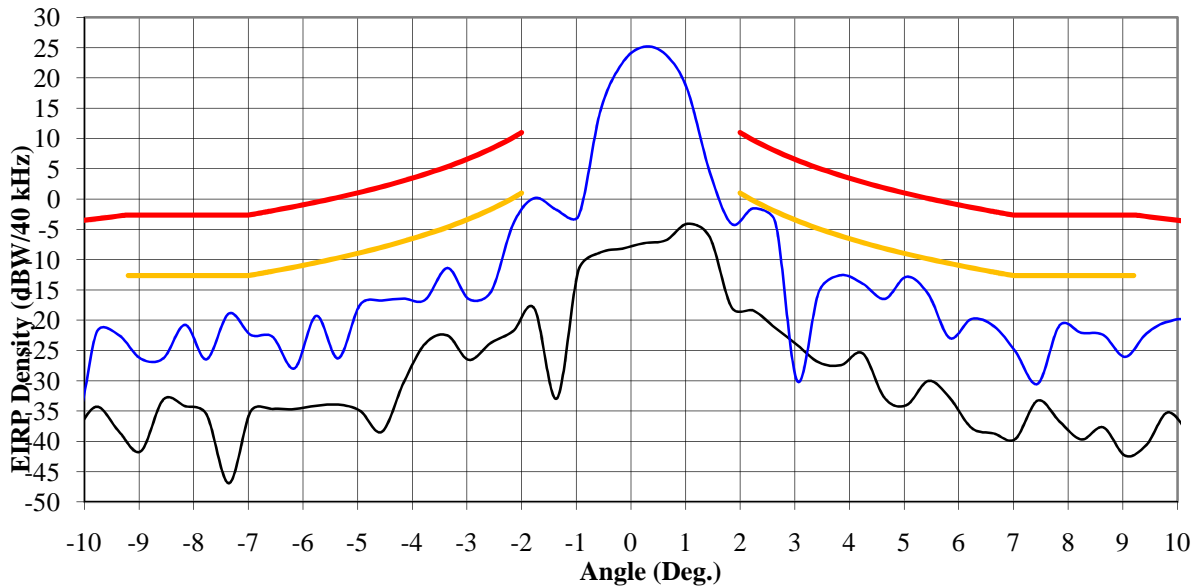
**Surfbeam-2 User Terminal
Tx Az 29.50 GHz RHC**



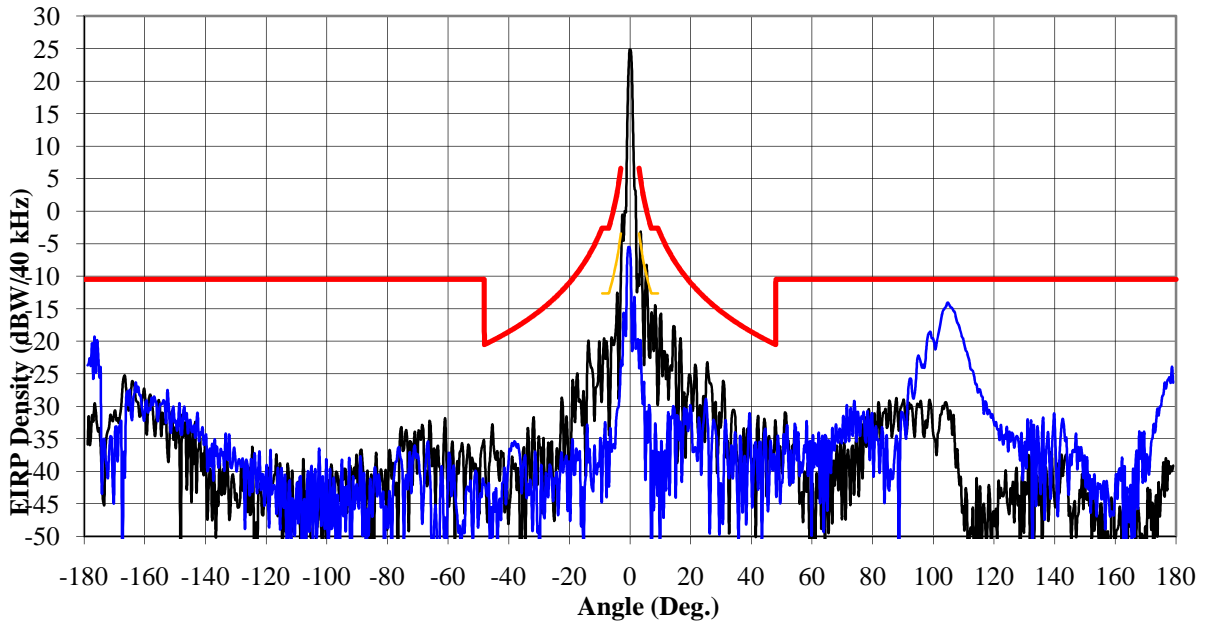
**Surfbeam-2 User Terminal
Tx Az 28.50 GHz RHC**



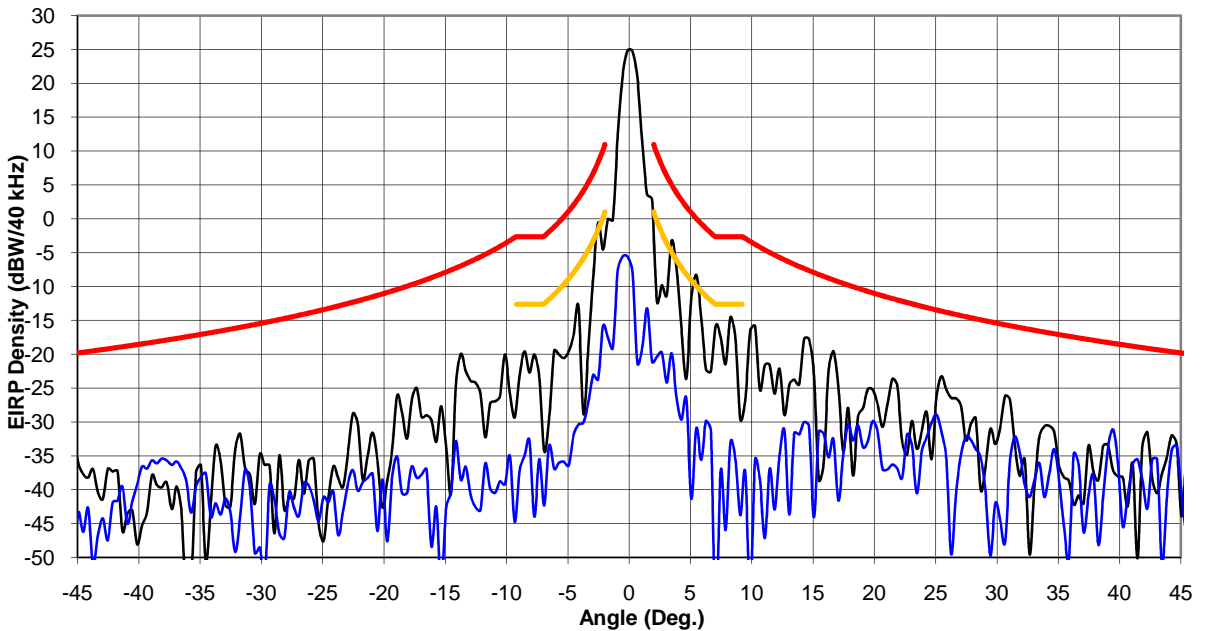
**Surfbeam-2 User Terminal
Tx Az 29.50 GHz RHC**



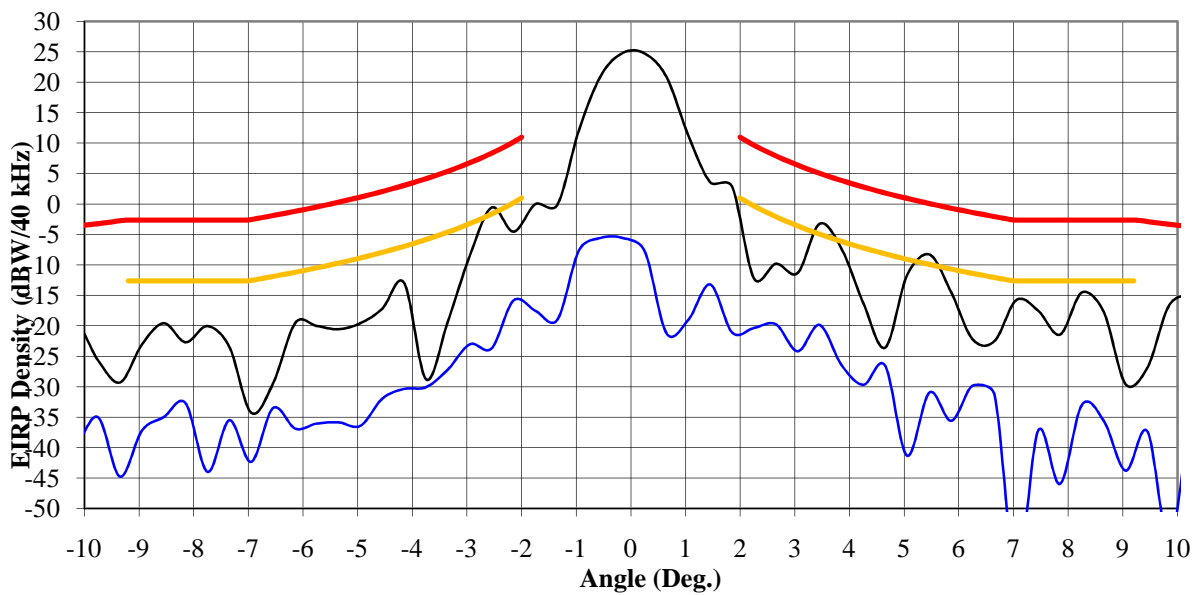
**Surfbeam-2 User Terminal
Tx EL 29.50 GHz LHC**



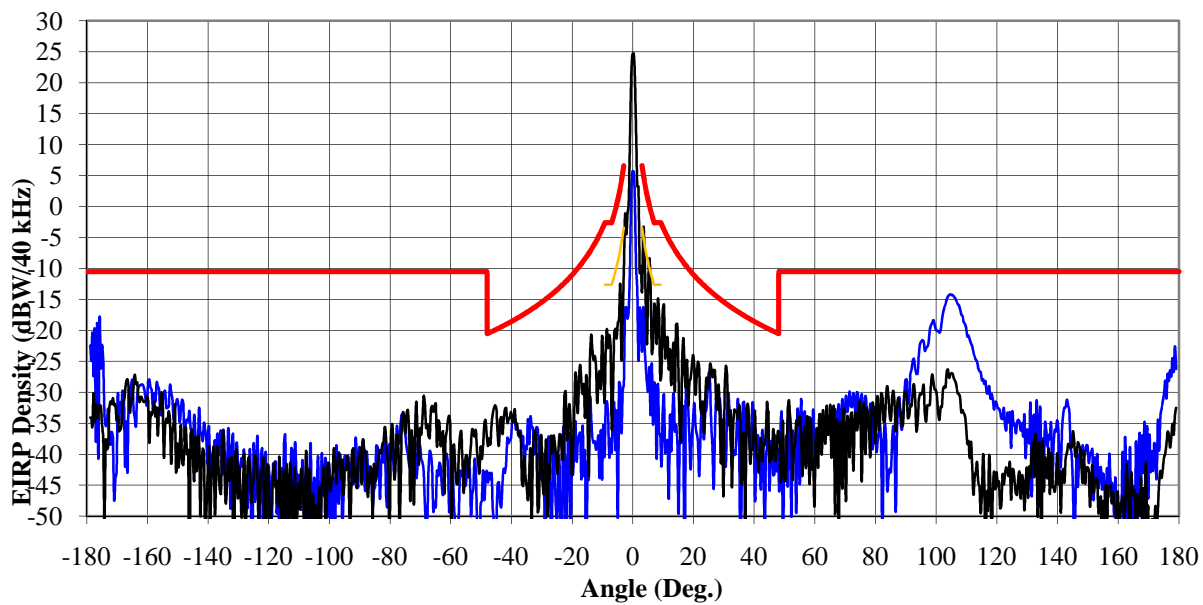
**Surfbeam-2 User Terminal
Tx EL 29.50 GHz LHC**



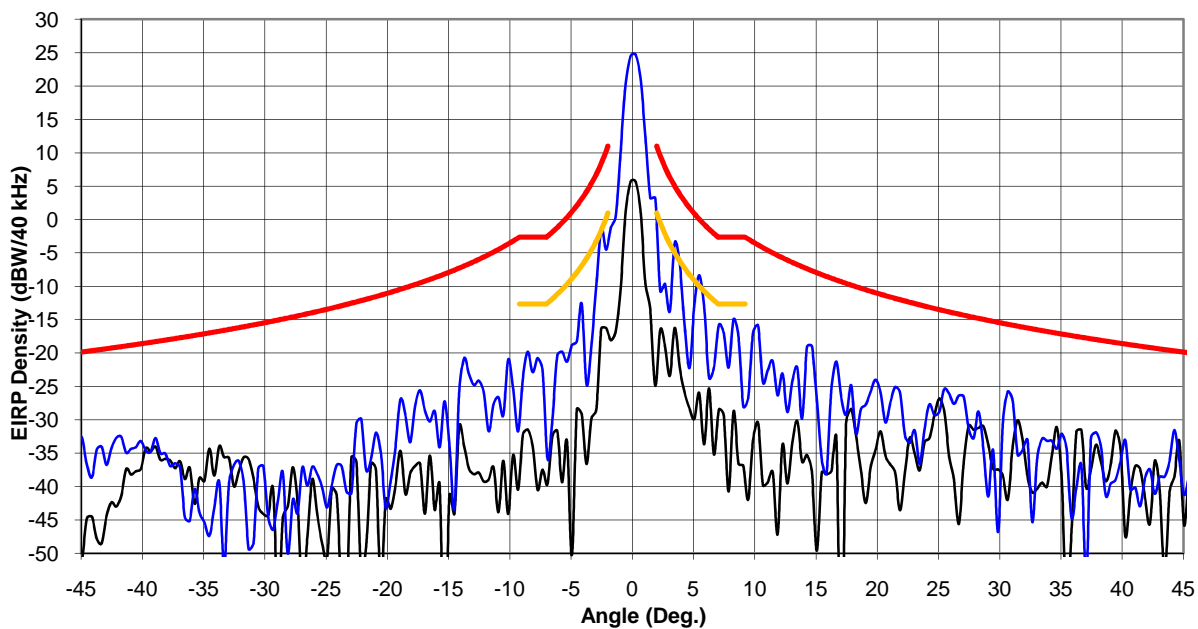
**Surfbeam-2 User Terminal
Tx EL 29.50 GHz LHC**



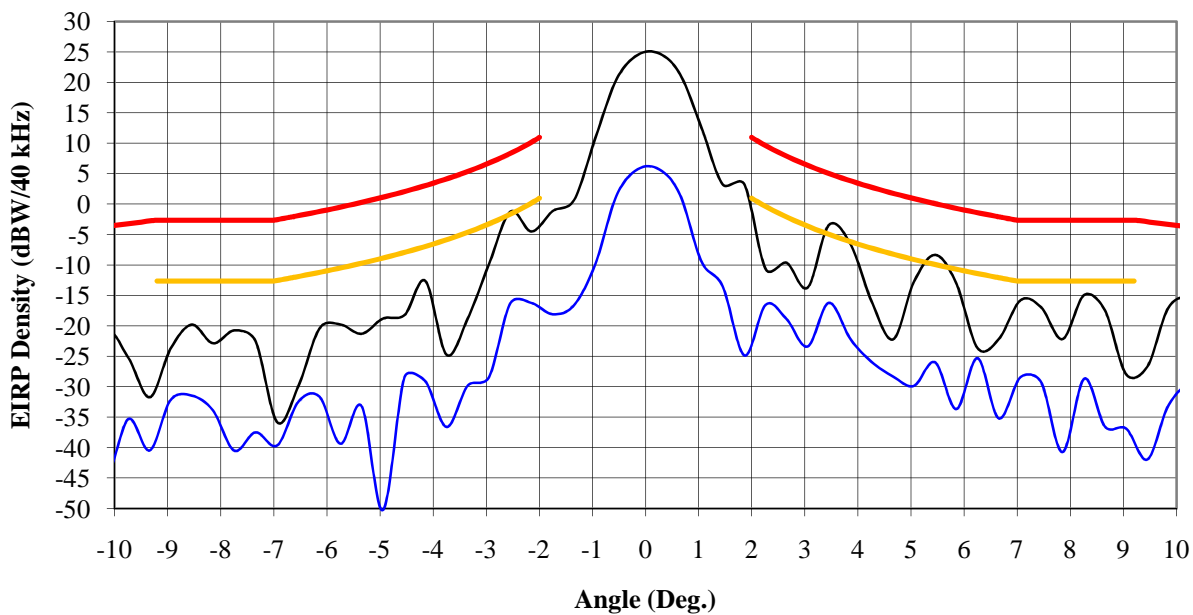
**Surfbeam-2 User Terminal
Tx EL 29.50 GHz RHC**



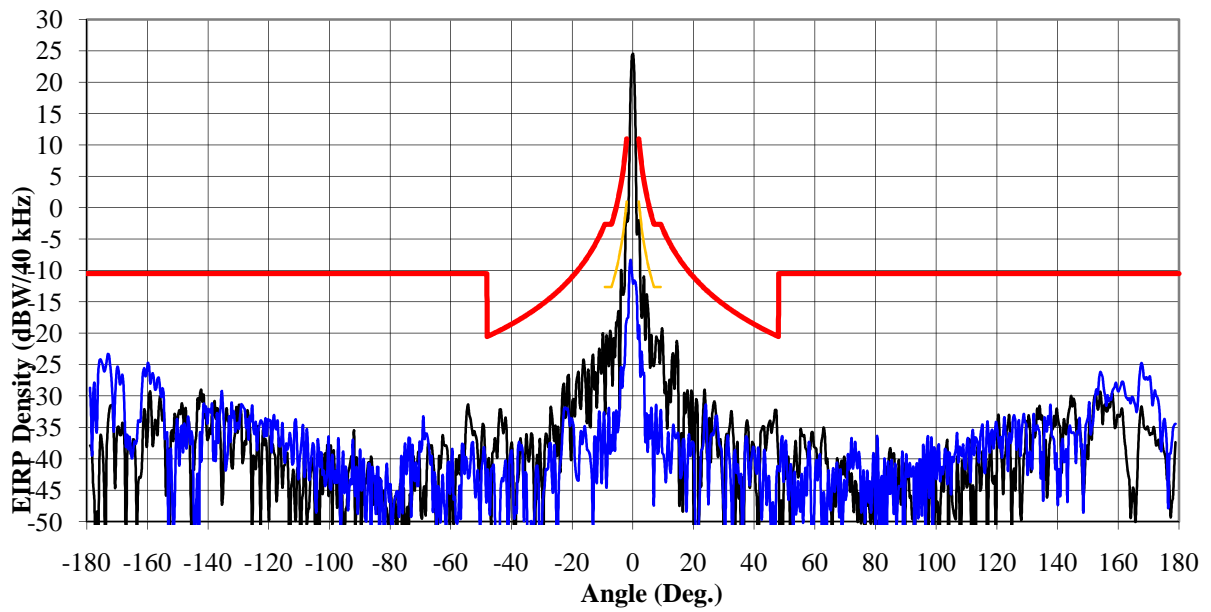
**Surfbeam-2 User Terminal
Tx EL 29.50 GHz RHC**



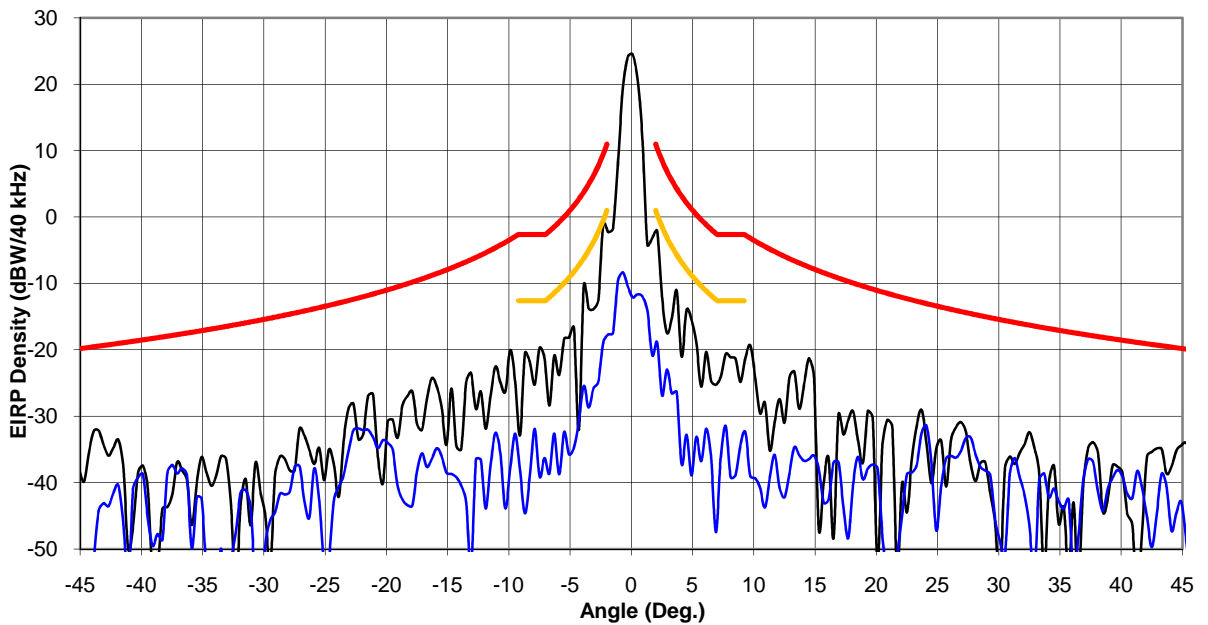
**Surfbeam-2 User Terminal
Tx EL 29.50 GHz RHC**



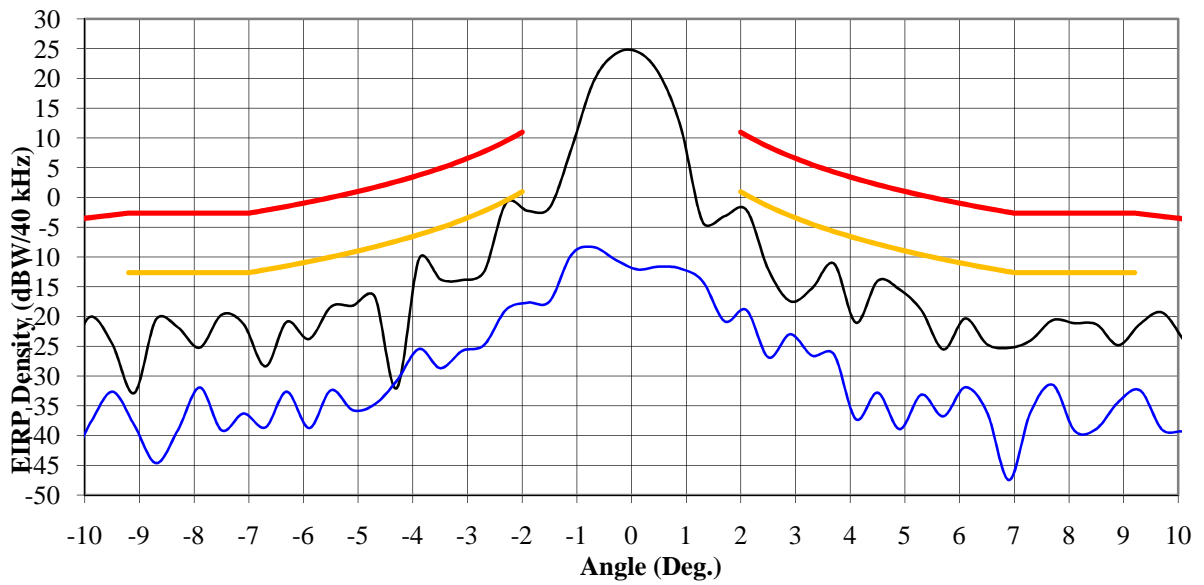
Surfbeam-2 User Terminal
Tx Az 29.75 GHz LHC



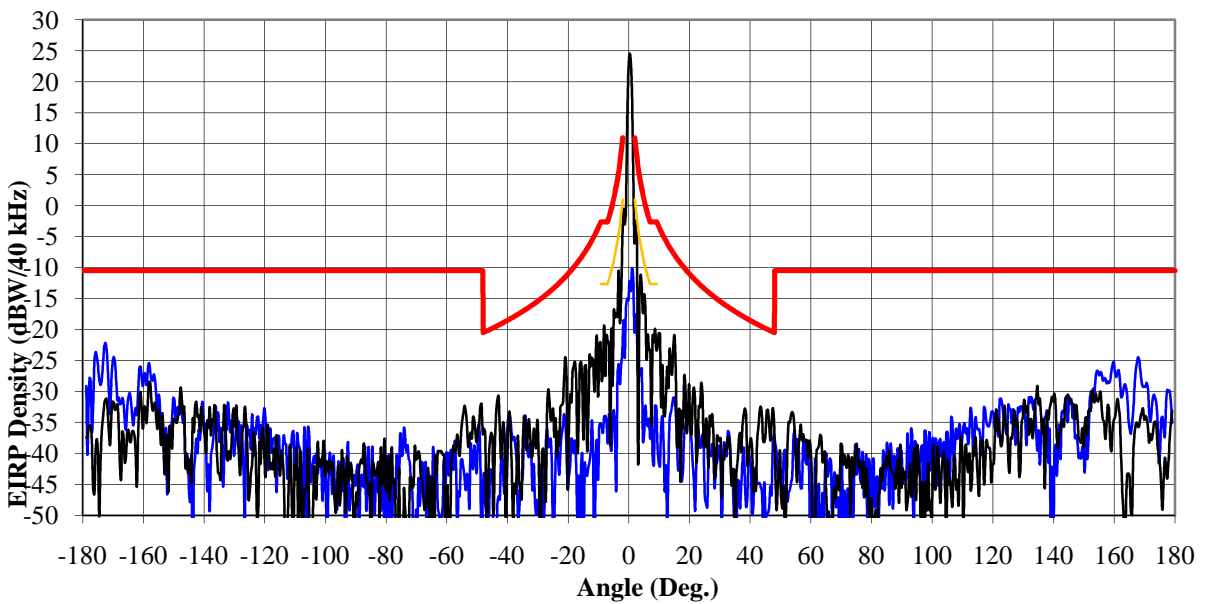
Surfbeam-2 User Terminal
Tx Az 29.75 GHz LHC



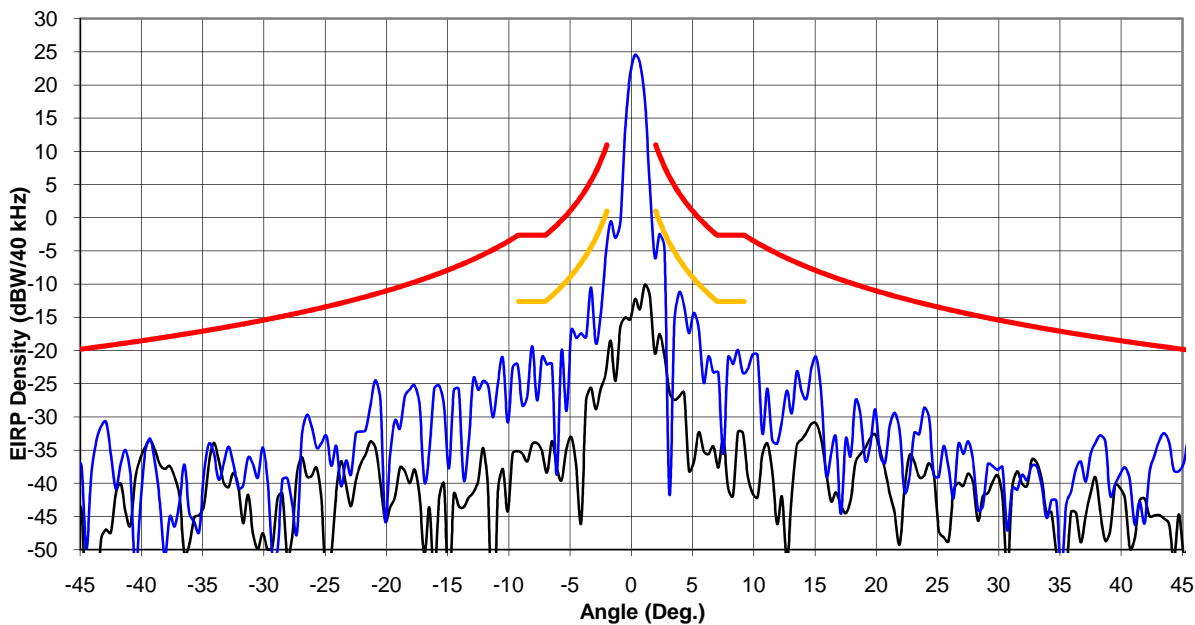
**Surfbeam-2 User Terminal
Tx Az 29.75 GHz LHC**



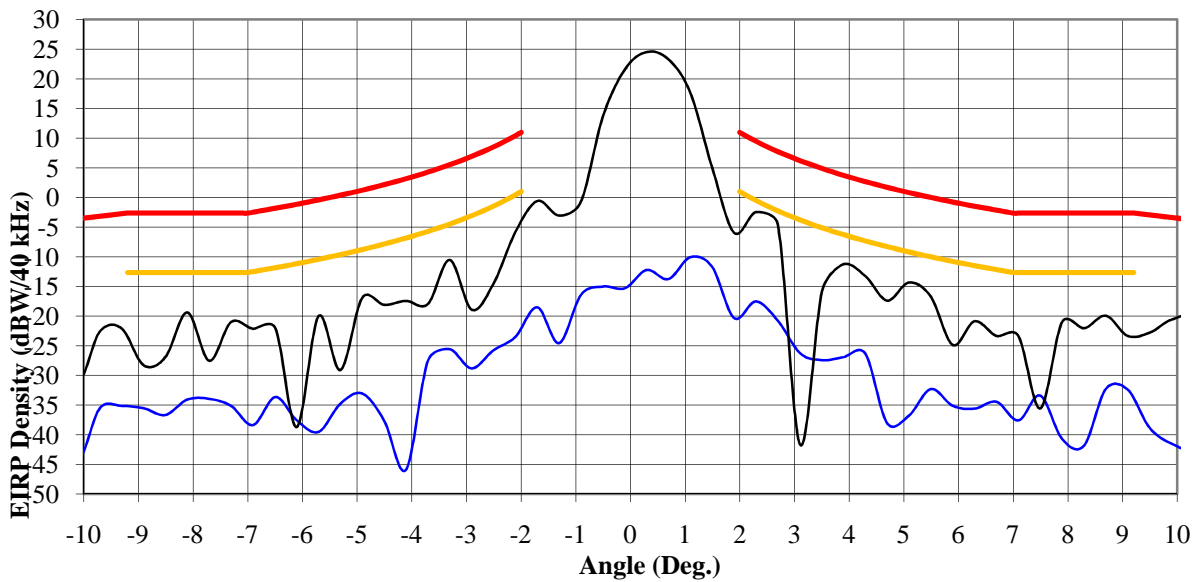
**Surfbeam-2 User Terminal
Tx Az 29.75 GHz RHC**



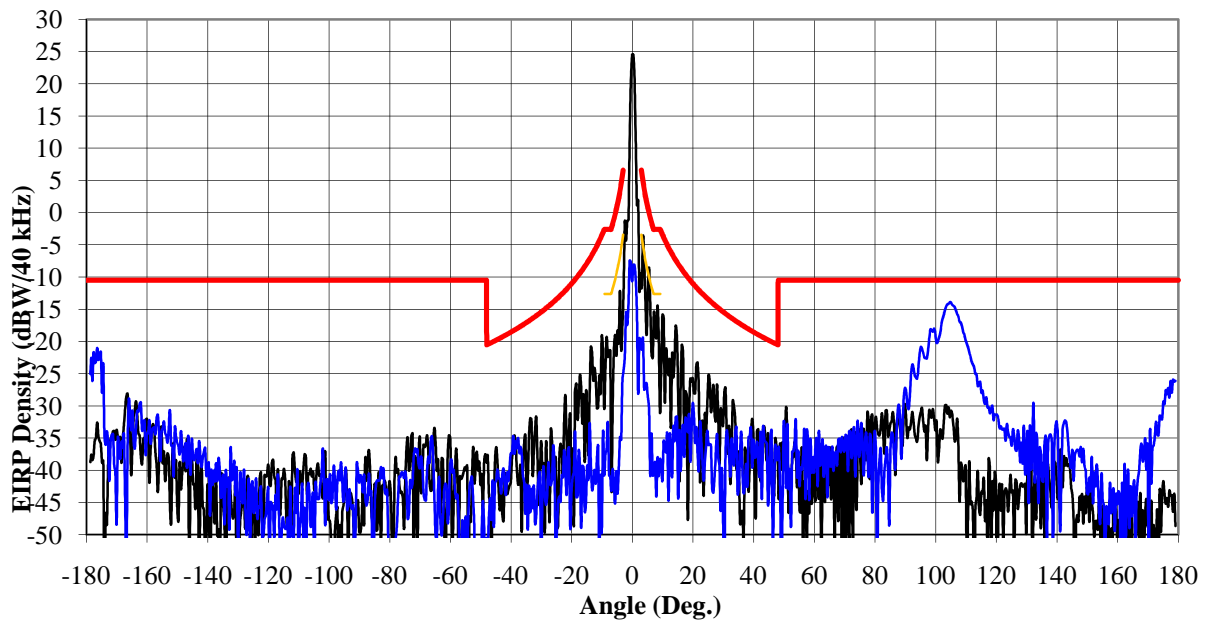
Surfbeam-2 User Terminal
Tx Az 29.75 GHz RHC



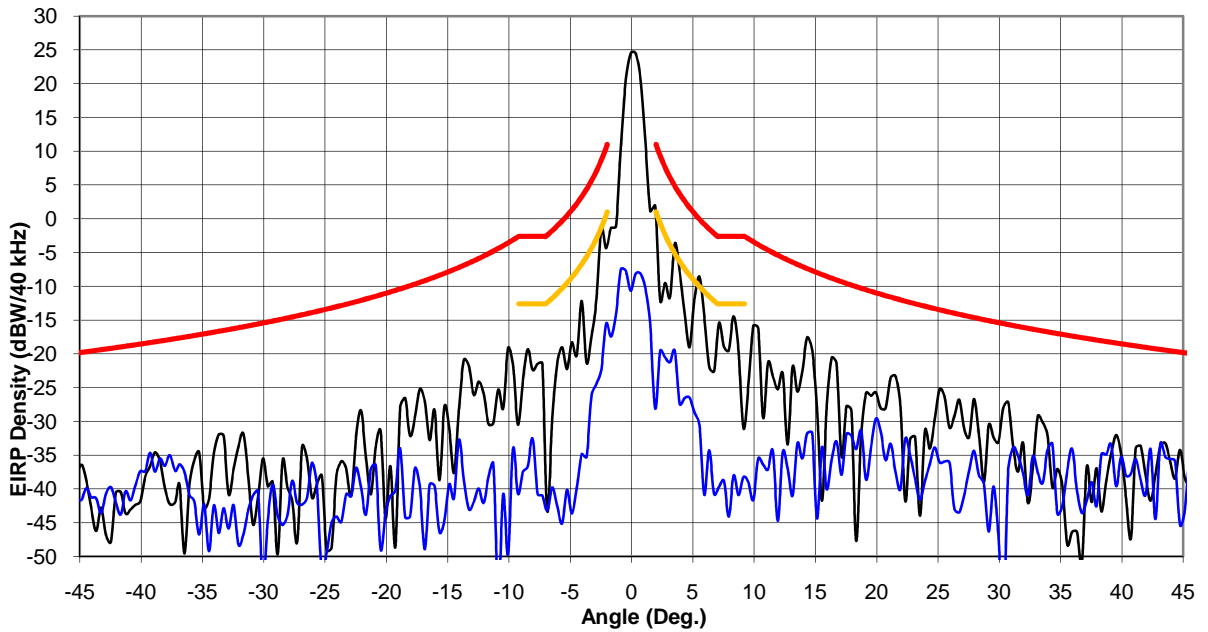
Surfbeam-2 User Terminal
Tx Az 29.75 GHz RHC



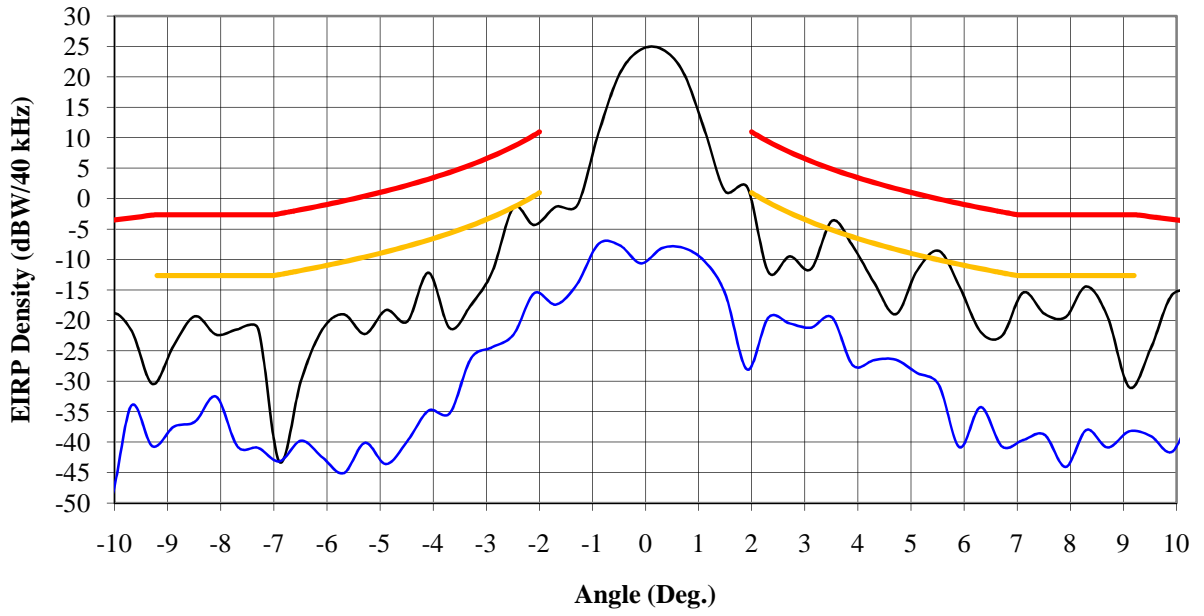
**Surfbeam-2 User Terminal
Tx EL 29.75 GHz LHC**



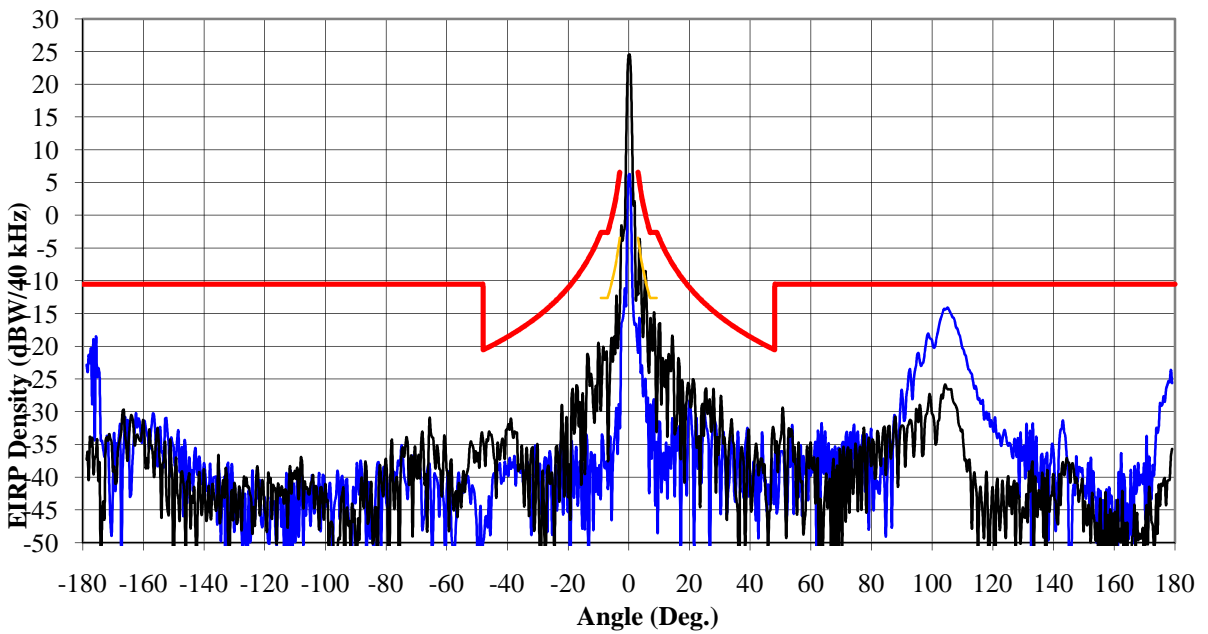
**Surfbeam-2 User Terminal
Tx EL 29.75 GHz LHC**



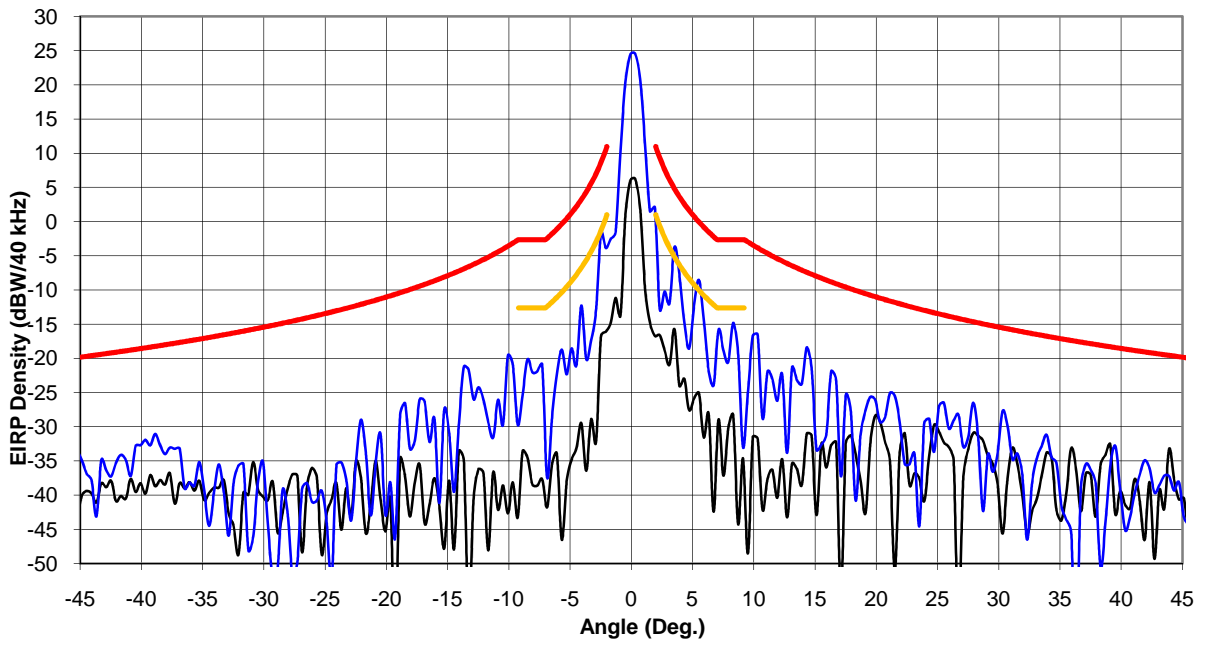
**Surfbeam-2 User Terminal
Tx EL 29.75 GHz LHC**



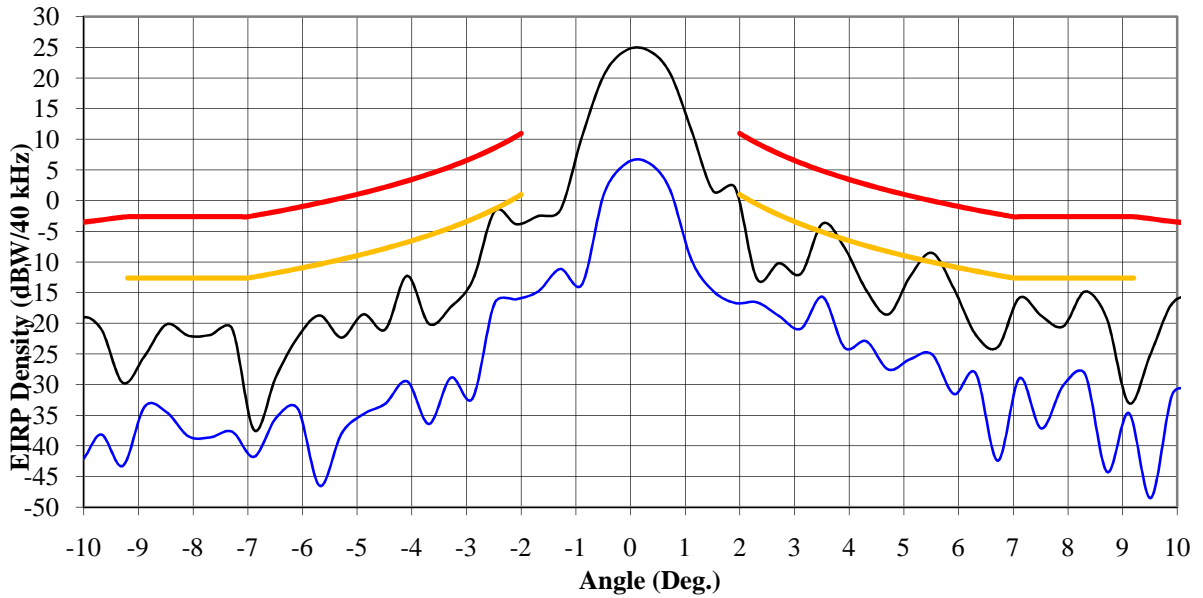
**Surfbeam-2 User Terminal
Tx EL 29.75 GHz RHC**



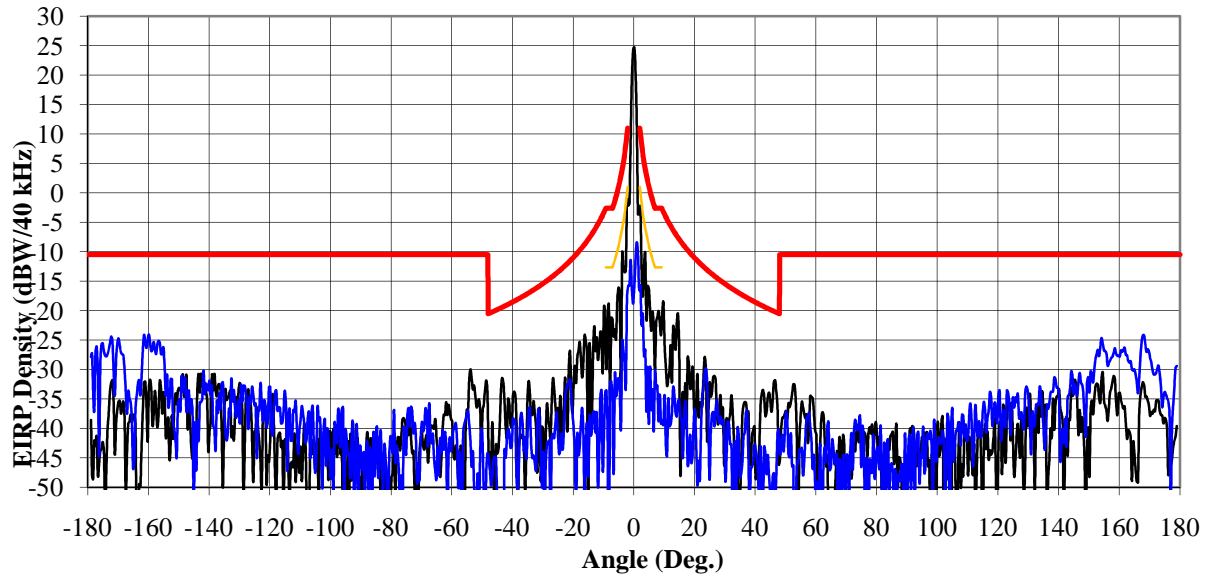
Surfbeam-2 User Terminal
Tx EL 29.75 GHz RHC



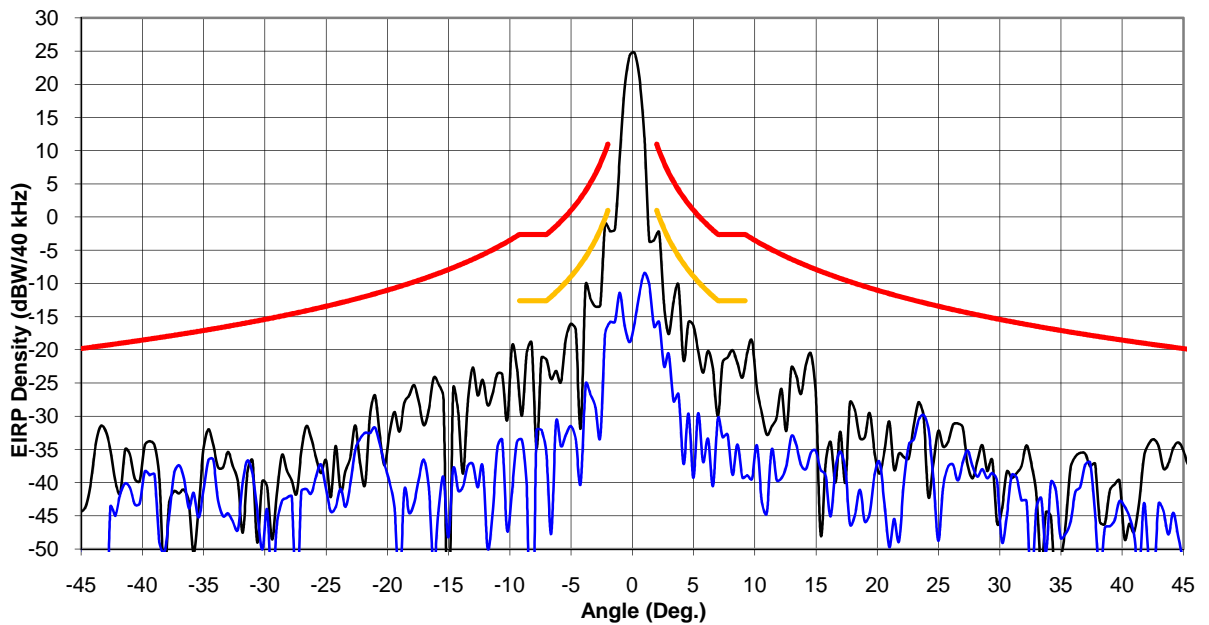
Surfbeam-2 User Terminal
Tx EL 29.75 GHz RHC



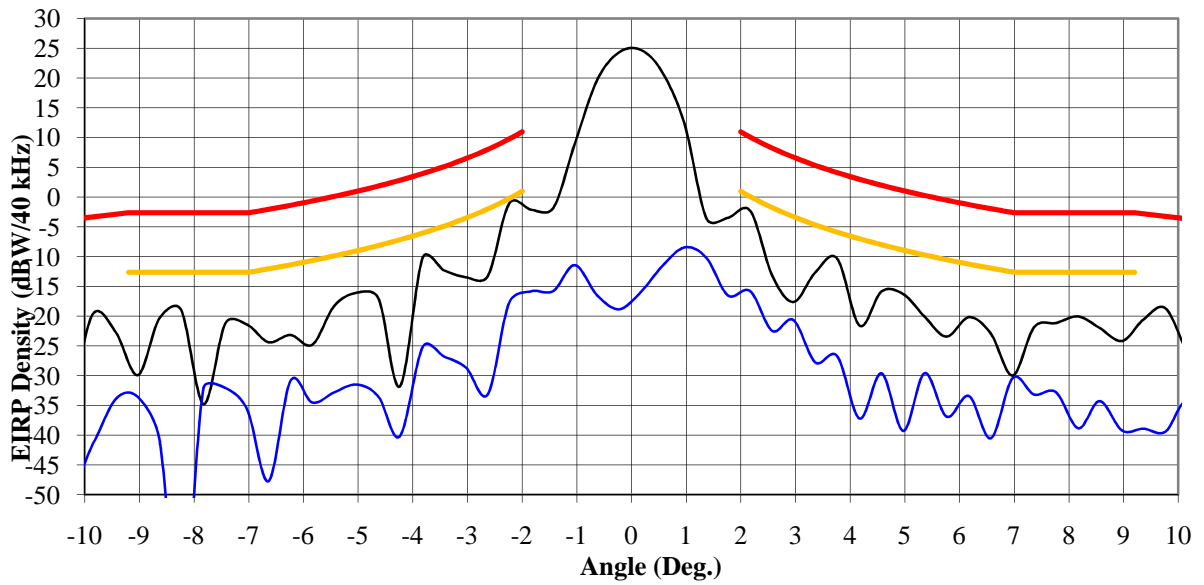
Surfbeam-2 User Terminal
Tx Az 30.00 GHz LHC



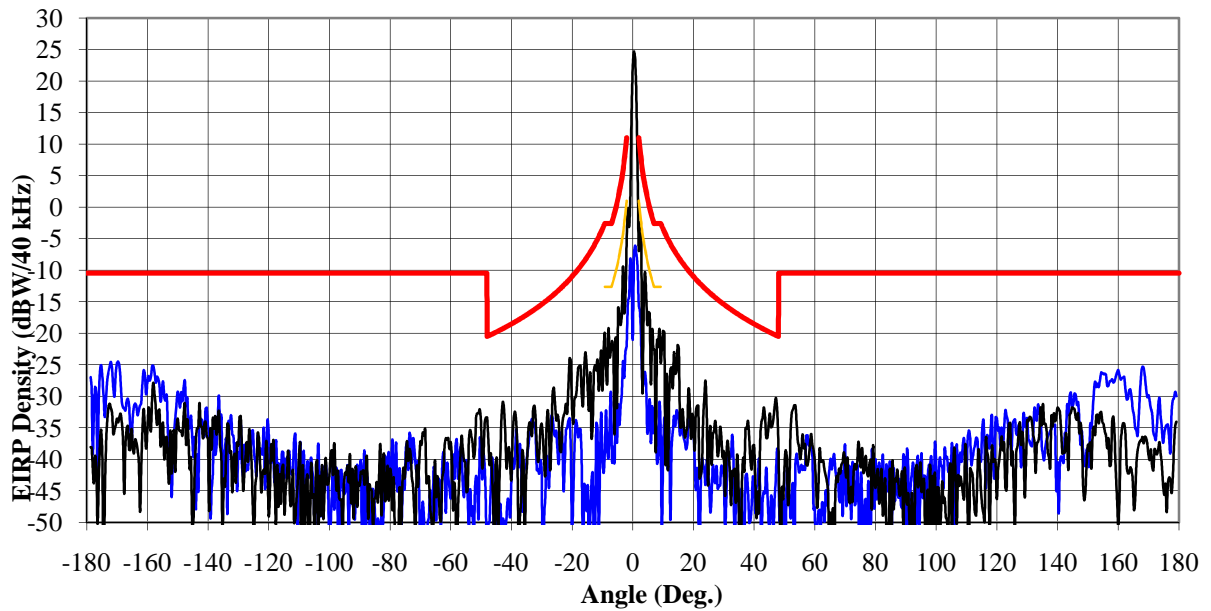
Surfbeam-2 User Terminal
Tx Az 30.00 GHz LHC



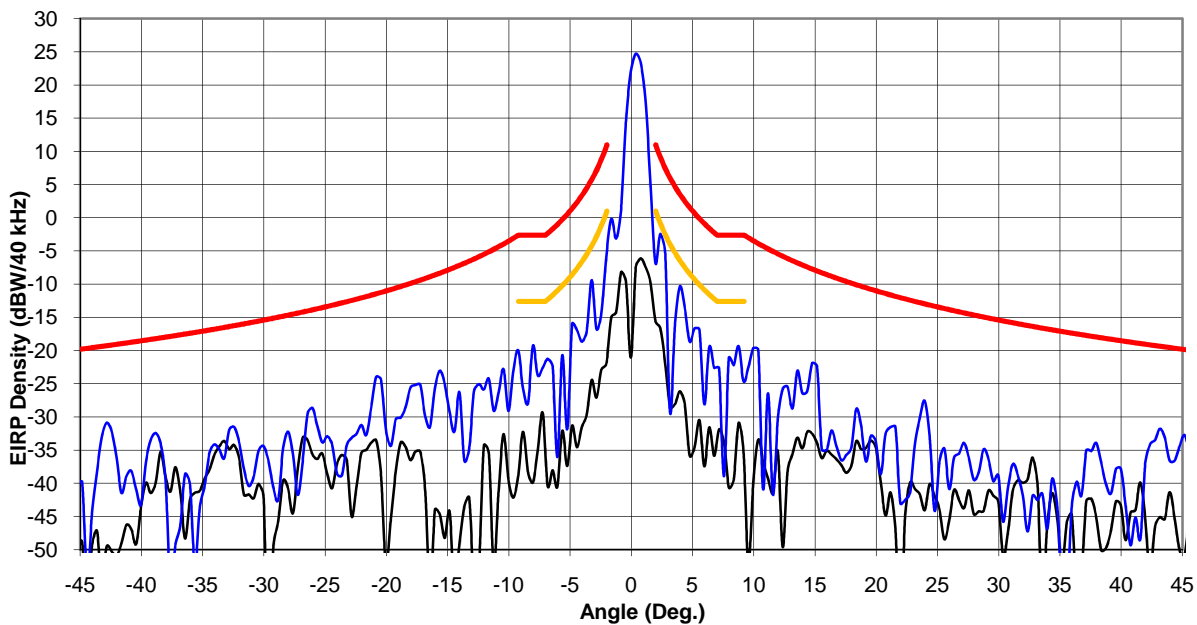
**Surfbeam-2 User Terminal
Tx Az 30.00 GHz LHC**



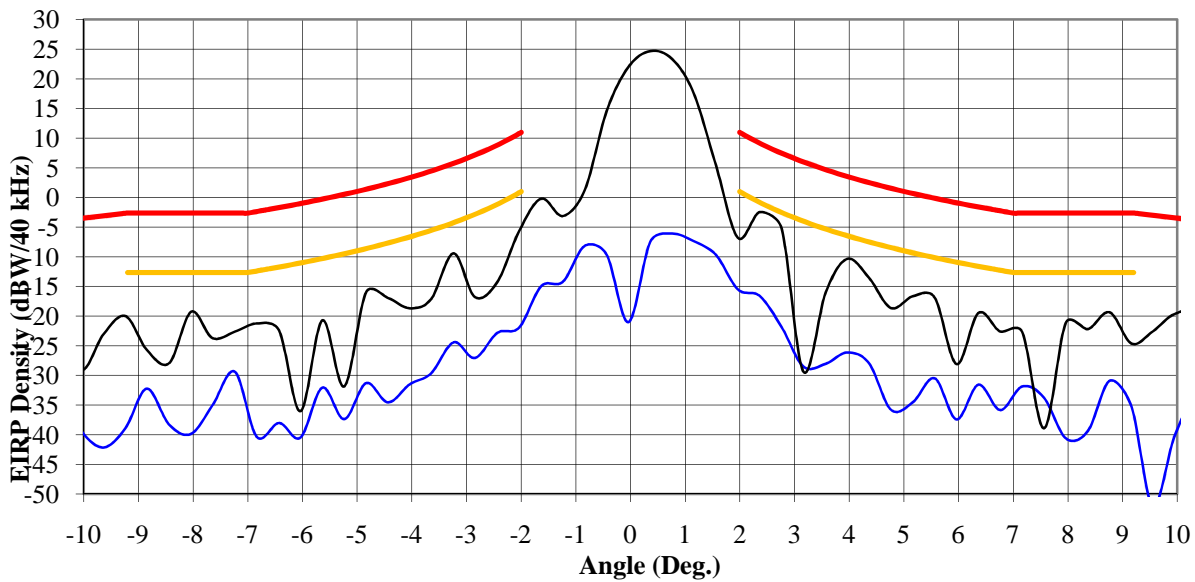
**Surfbeam-2 User Terminal
Tx Az 30.00 GHz RHC**



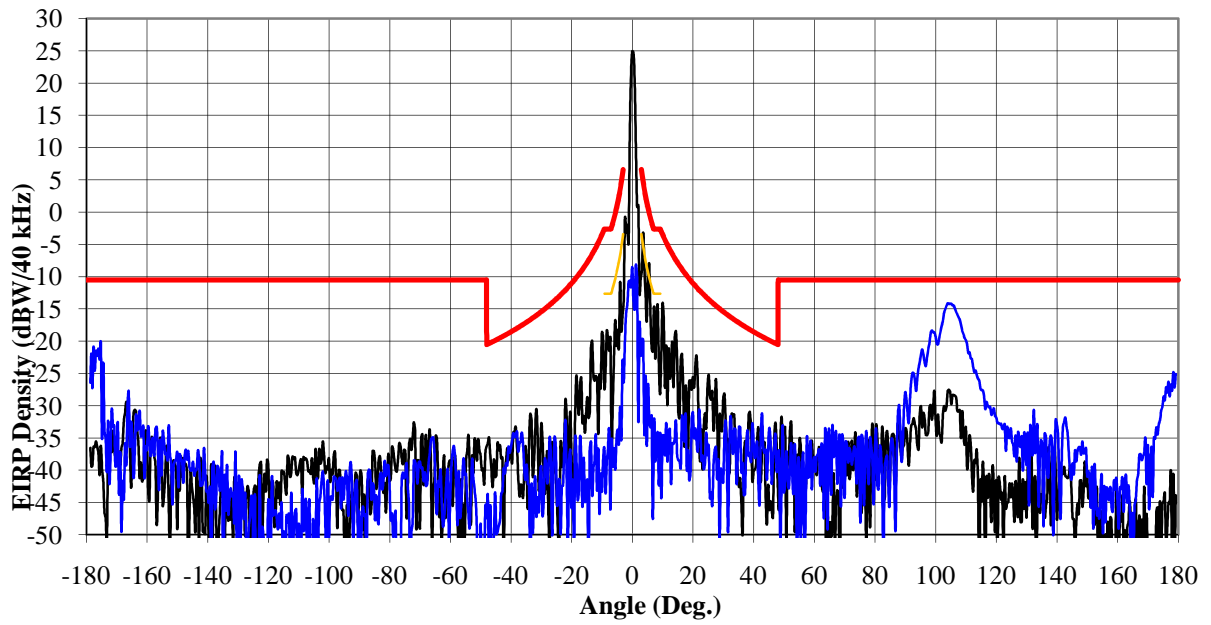
**Surfbeam-2 User Terminal
Tx Az 30.00 GHz RHC**



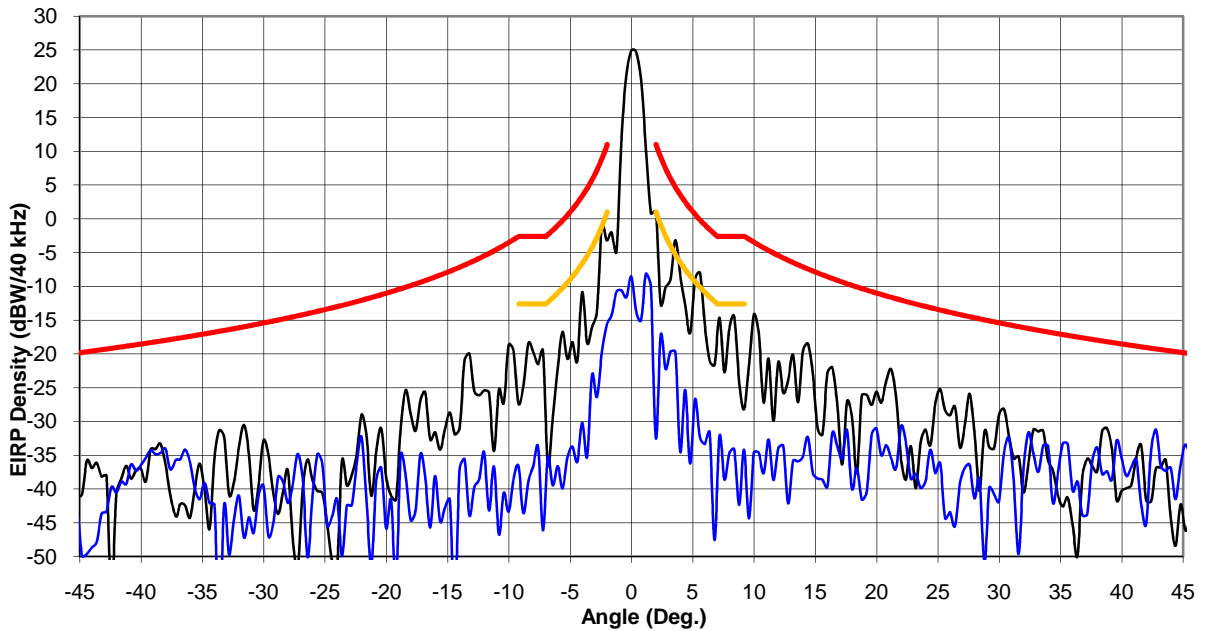
**Surfbeam-2 User Terminal
Tx Az 30.00 GHz RHC**



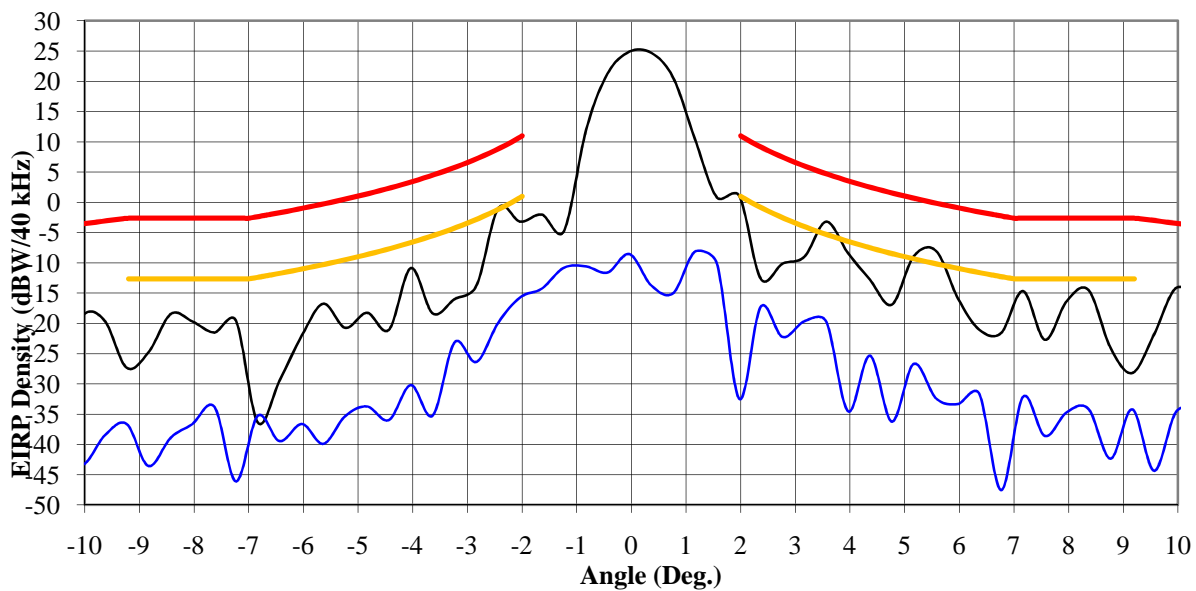
**Surfbeam-2 User Terminal
Tx EL 30.00 GHz LHC**



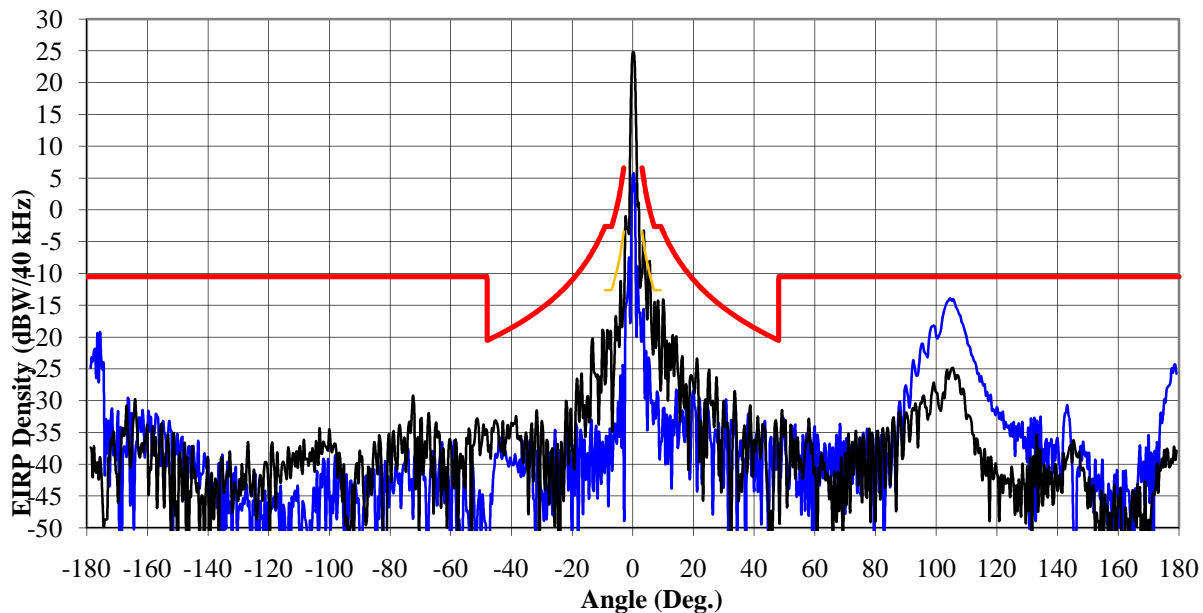
**Surfbeam-2 User Terminal
Tx EL 30.00 GHz LHC**



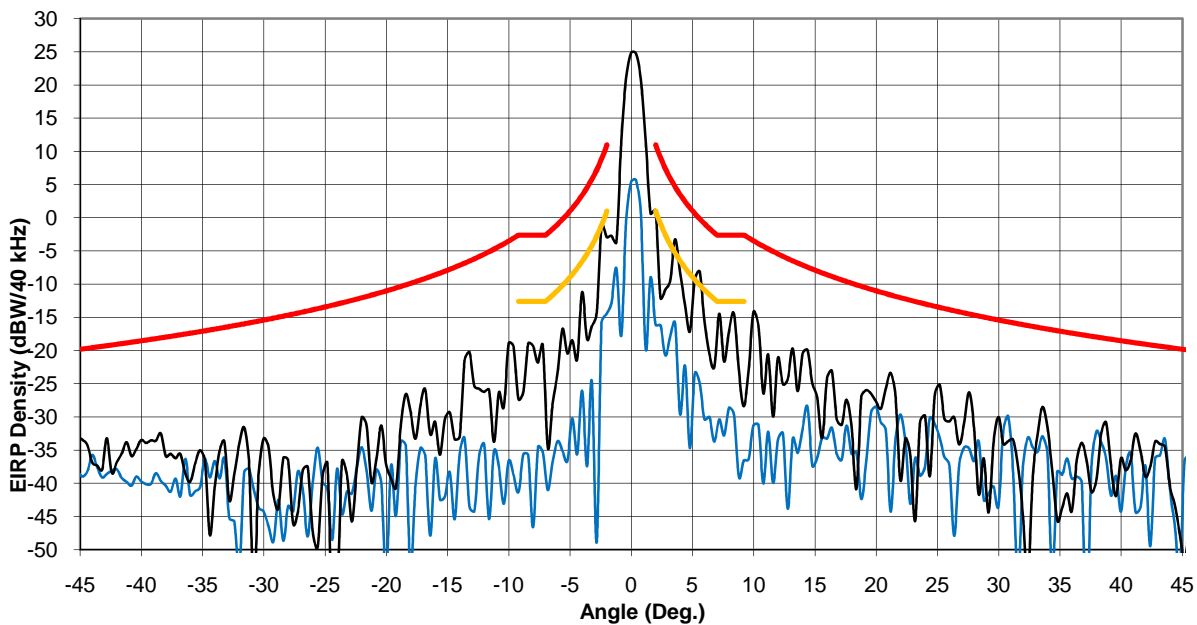
**Surfbeam-2 User Terminal
Tx EL 30.00 GHz LHC**



**Surfbeam-2 User Terminal
Tx EL 30.00 GHz RHC**



**Surfbeam-2 User Terminal
Tx EL 30.00 GHz RHC**



**Surfbeam-2 User Terminal
Tx EL 30.00 GHz RHC**

