

Skjei Telecom, Inc.
Earth Station Data Sheet

4. EARTH STATION COORDINATION DATA

This section presents the data pertinent to frequency coordination of the proposed earth station that was circulated to all carriers within its coordination contours. The coordination contours include all the area seaward of this route within 200 km of the baseline of the United States or 200 km from any fixed service offshore installations.

Skjei Telecom, Inc. Earth Station Data Sheet

Skjei Telecom, Inc.
Earth Station Data Sheet
7777 Leesburg Pike, Suite 315N, Falls Church, VA 22043
(703)917-4020,(703)917-0098

Date: 12/23/2009
Job Number: 091223SKJTEL03

Administrative Information

Status: ENGINEER PROPOSAL
Call Sign:
Licensee Code: TELESV
Licensee Name: Vizada Satellite Inc -ESV In-Motion

Site Information MAUI, HI

Venue Name:
Latitude (NAD 83): 20° 53' 38.4" N
Longitude (NAD 83): 156° 28' 22.8" E
Climate Zone: B
Rain Zone: 4
Ground Elevation (AMSL): 0.0 m / 0.0 ft

Link Information

Satellite Type: Geostationary
Mode: TO - Transmit-Only
Modulation: Digital
Satellite Arc: 177° W to 177° West Longitude
Azimuth Range: 125.5° to 125.5°
Corresponding Elevation Angles: 51.3° / 51.3°
Antenna Centerline (AGL): 15.54 m / 51.0 ft

Antenna Information Transmit - FCC32

Manufacturer: FCC REFERENCE
Model: 32-25LOG(THETA)
Gain / Diameter: 41.7 dBi / 2.4 m
3-dB / 15-dB Beamwidth: 0.66° / 1.18°

Max Available RF Power (dBW/4 kHz): -10.5
(dBW/MHz): 13.5

Maximum EIRP (dBW/4 kHz): 31.2
(dBW/MHz): 55.2
(dBW):

Interference Objectives: Long Term: -154.0 dBW/4 kHz 20%
Short Term: -131.0 dBW/4 kHz 0.0025%

Frequency Information Transmit 6.1 GHz

Emission / Frequency Range (MHz):
102KG7D - 205KG7D / 6277.0 - 6283.0
102KG7D - 205KG7D / 6295.5 - 6298.0
102KG7D - 205KG7D / 6344.0 - 6350.0
102KG7D - 205KG7D / 6355.0 - 6371.5
102KG7D - 205KG7D / 6418.0 - 6423.0

Max Great Circle Coordination Distance: 160.6 km / 99.8 mi
Precipitation Scatter Contour Radius: 100.0 km / 62.1 mi

Skjei Telecom, Inc. Earth Station Data Sheet

Skjei Telecom, Inc. Earth Station Data Sheet

7777 Leesburg Pike, Suite 315N, Falls Church, VA 22043
(703)917-4020,(703)917-0098

Coordination Values		MAUI, HI
Licensee Name		Vizada Satellite Inc -ESV In-Motion
Latitude (NAD 83)		20° 53' 38.4" N
Longitude (NAD 83)		156° 28' 22.8" E
Ground Elevation (AMSL)		0.0 m / 0.0 ft
Antenna Centerline (AGL)		15.54 m / 51.0 ft
Antenna Model		FCC Reference 32-25LOG(THETA)
Antenna Mode		Transmit 6.1 GHz
Interference Objectives: Long Term		-154.0 dBW/4 kHz 20%
Short Term		-131.0 dBW/4 kHz 0.0025%
Max Available RF Power		-10.5 (dBW/4 kHz)

Transmit 6.1 GHz				
Azimuth (°)	Horizon Elevation (°)	Antenna Discrimination (°)	Horizon Gain (dBi)	Coordination Distance (km)
0	0.00	111.32	-10.00	160.62
5	0.00	108.53	-10.00	160.62
10	0.00	105.65	-10.00	160.62
15	0.00	102.68	-10.00	160.62
20	0.00	99.65	-10.00	160.62
25	0.00	96.57	-10.00	160.62
30	0.00	93.46	-10.00	160.62
35	0.00	90.34	-10.00	160.62
40	0.00	87.21	-10.00	160.62
45	0.00	84.10	-10.00	160.62
50	0.00	81.01	-10.00	160.62
55	0.00	77.97	-10.00	160.62
60	0.00	74.99	-10.00	160.62
65	0.00	72.08	-10.00	160.62
70	0.00	69.27	-10.00	160.62
75	0.00	66.57	-10.00	160.62
80	0.00	64.01	-10.00	160.62
85	0.00	61.61	-10.00	160.62
90	0.00	59.40	-10.00	160.62
95	0.00	57.40	-10.00	160.62
100	0.00	55.64	-10.00	160.62
105	0.00	54.14	-10.00	160.62
110	0.00	52.94	-10.00	160.62
115	0.00	52.05	-10.00	160.62
120	0.00	51.49	-10.00	160.62
125	0.00	51.28	-10.00	160.62
130	0.00	51.42	-10.00	160.62
135	0.00	51.90	-10.00	160.62
140	0.00	52.72	-10.00	160.62
145	0.00	53.86	-10.00	160.62
150	0.00	55.29	-10.00	160.62
155	0.00	57.00	-10.00	160.62
160	0.00	58.95	-10.00	160.62
165	0.00	61.12	-10.00	160.62
170	0.00	63.48	-10.00	160.62
175	0.00	66.01	-10.00	160.62
180	0.00	68.68	-10.00	160.62
185	0.00	71.47	-10.00	160.62

Skjei Telecom, Inc. Earth Station Data Sheet

Skjei Telecom, Inc. Earth Station Data Sheet

7777 Leesburg Pike, Suite 315N, Falls Church, VA 22043
(703)917-4020,(703)917-0098

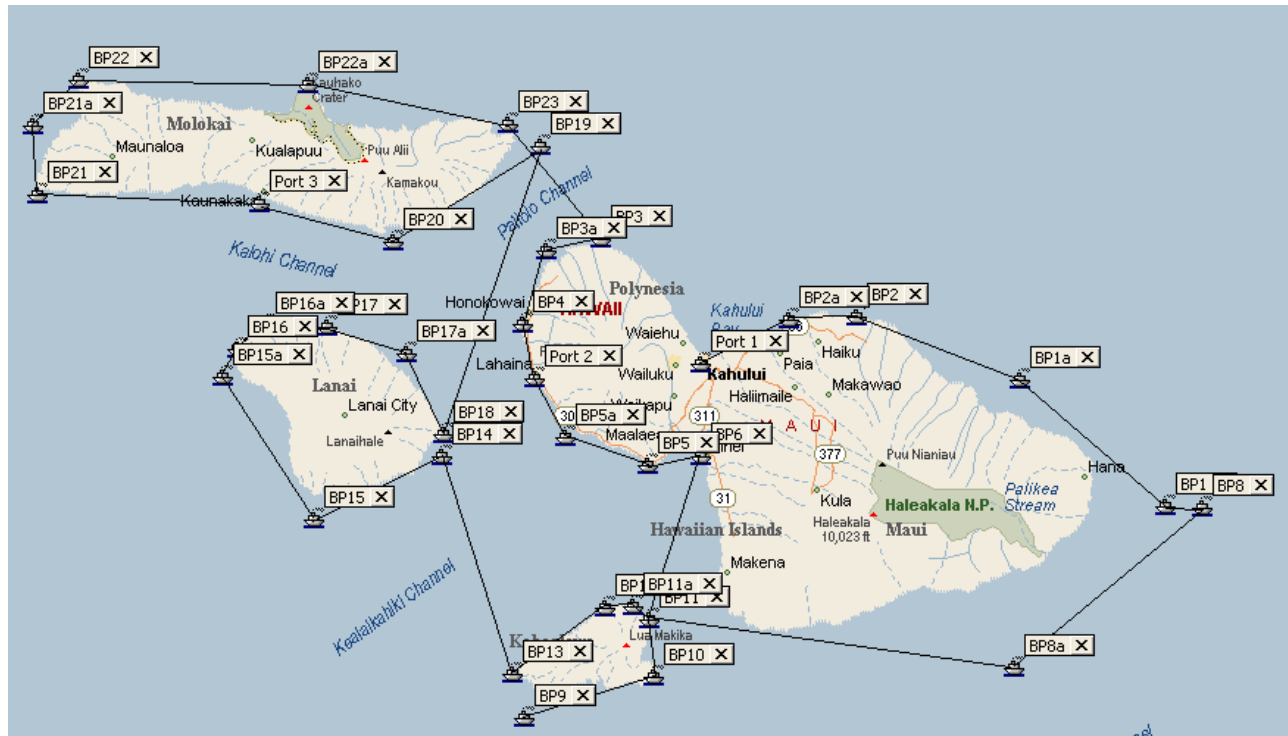
Coordination Values	MAUI, HI
Licensee Name	Vizada Satellite Inc -ESV In-Motion
Latitude (NAD 83)	20° 53' 38.4" N
Longitude (NAD 83)	156° 28' 22.8" E
Ground Elevation (AMSL)	0.0 m / 0.0 ft
Antenna Centerline (AGL)	15.54 m / 51.0 ft
Antenna Model	FCC Reference 32-25LOG(THETA)
Antenna Mode	Transmit 6.1 GHz
Interference Objectives: Long Term	-154.0 dBW/4 kHz 20%
Short Term	-131.0 dBW/4 kHz 0.0025%
Max Available RF Power	-10.5 (dBW/4 kHz)

Azimuth (°)	Horizon Elevation (°)	Antenna Discrimination (°)	Transmit 6.1 GHz	
			Horizon Gain (dBi)	Coordination Distance (km)
190	0.00	74.35	-10.00	160.62
195	0.00	77.32	-10.00	160.62
200	0.00	80.35	-10.00	160.62
205	0.00	83.43	-10.00	160.62
210	0.00	86.54	-10.00	160.62
215	0.00	89.66	-10.00	160.62
220	0.00	92.79	-10.00	160.62
225	0.00	95.90	-10.00	160.62
230	0.00	98.99	-10.00	160.62
235	0.00	102.03	-10.00	160.62
240	0.00	105.01	-10.00	160.62
245	0.00	107.92	-10.00	160.62
250	0.00	110.73	-10.00	160.62
255	0.00	113.43	-10.00	160.62
260	0.00	115.99	-10.00	160.62
265	0.00	118.39	-10.00	160.62
270	0.00	120.60	-10.00	160.62
275	0.00	122.60	-10.00	160.62
280	0.00	124.36	-10.00	160.62
285	0.00	125.86	-10.00	160.62
290	0.00	127.06	-10.00	160.62
295	0.00	127.95	-10.00	160.62
300	0.00	128.51	-10.00	160.62
305	0.00	128.72	-10.00	160.62
310	0.00	128.58	-10.00	160.62
315	0.00	128.10	-10.00	160.62
320	0.00	127.28	-10.00	160.62
325	0.00	126.14	-10.00	160.62
330	0.00	124.71	-10.00	160.62
335	0.00	123.00	-10.00	160.62
340	0.00	121.05	-10.00	160.62
345	0.00	118.88	-10.00	160.62
350	0.00	116.52	-10.00	160.62
355	0.00	113.99	-10.00	160.62

Skjei Telecom, Inc. Earth Station Data Sheet

Name	Latitude	Longitude
Port 1	20.894	-156.473
BP1	20.949	-156.276
BP2	20.724	-155.889
BP3	20.722	-155.842
BP4	20.585	-156.426
BP5	20.592	-156.538
BP6	20.785	-156.474
BP7	20.775	-156.539
BP8	20.876	-156.682
BP9	20.94	-156.698
BP10	21.041	-156.599
BP11	21.175	-156.717
BP12	21.226	-157.258
BP13	21.091	-157.309
BP14	21.081	-157.029
BP15	21.037	-156.861
BP16	21.149	-156.675
BP17	20.811	-156.798
BP18	20.936	-156.943
BP19	20.91	-157.056
BP20	20.71	-156.959
BP21	20.785	-156.798
BP22	20.528	-156.71
BP23	20.607	-156.594
BP24	20.525	-156.532
BP25	20.476	-156.695
SW	20.358	-156.936
SE	20.358	-156.209

Skjei Telecom, Inc. Earth Station Data Sheet



Skjei Telecom, Inc. Earth Station Data Sheet



Skjei Telecom, Inc. Earth Station Data Sheet

