

PATTERN NO. 1-2 DATE 11-20-91

PROJECT 767

ENGRS.

OFFSAT

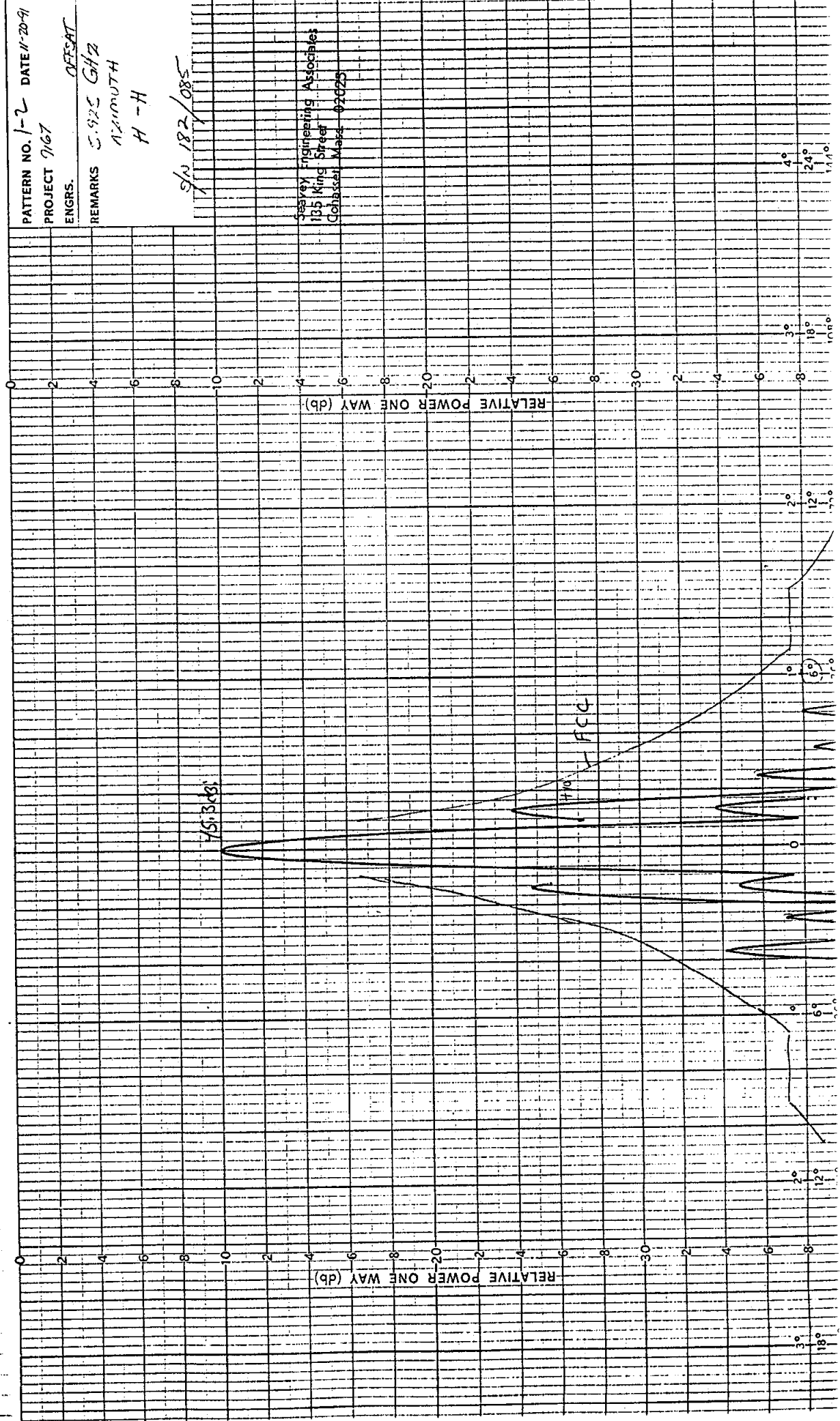
REMARKS 5.925 GHz

AZIMUTH

H-H

S/N 182/085

Seavey Engineering Associates
135 King Street
Cohasset, Mass. 02025



PATTERN NO. 1-10 DATE 11-20-91

PROJECT 9167

ENGRS. OFFSAT

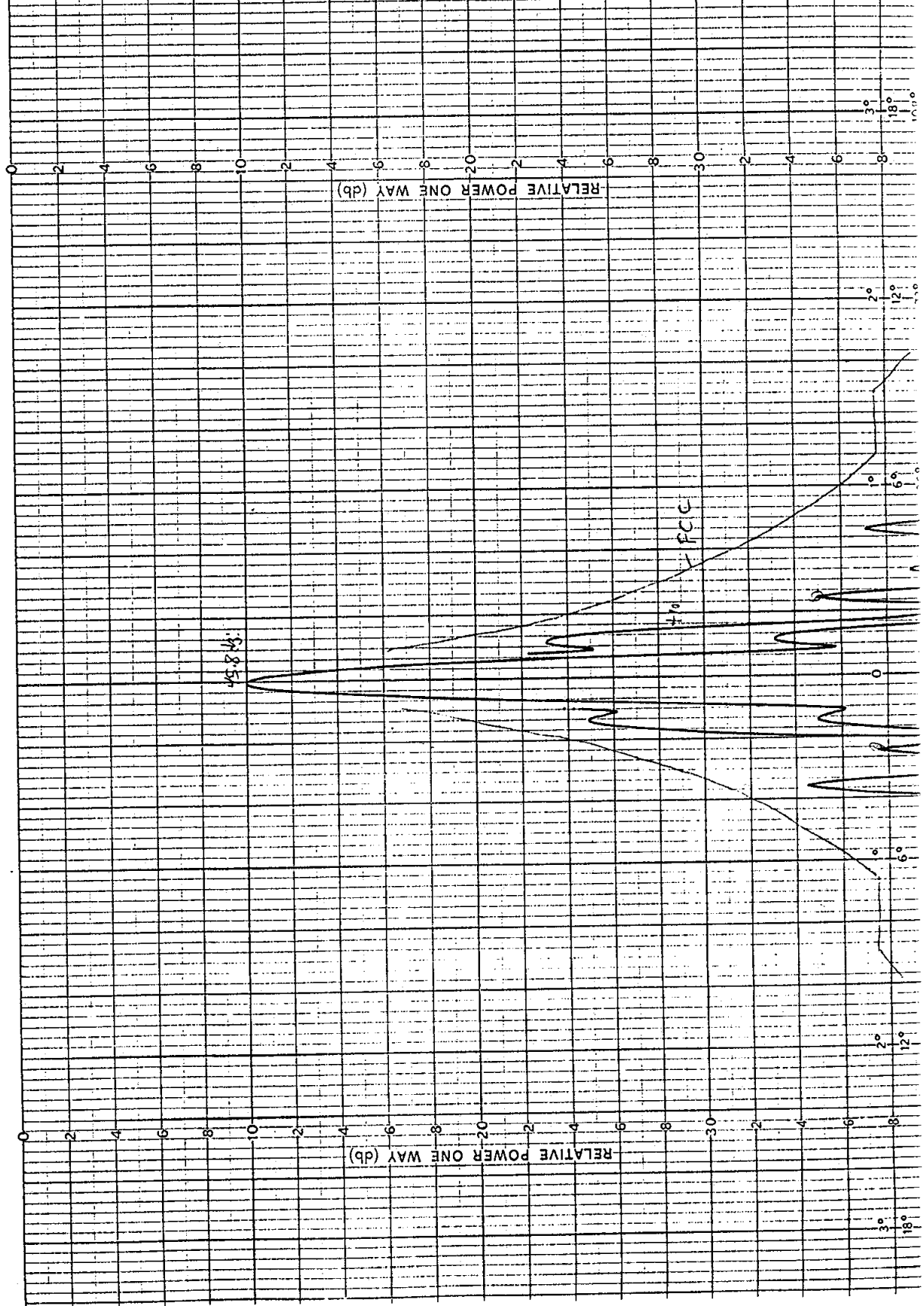
REMARKS 6.125 GHz

AZIMUTH

H-H

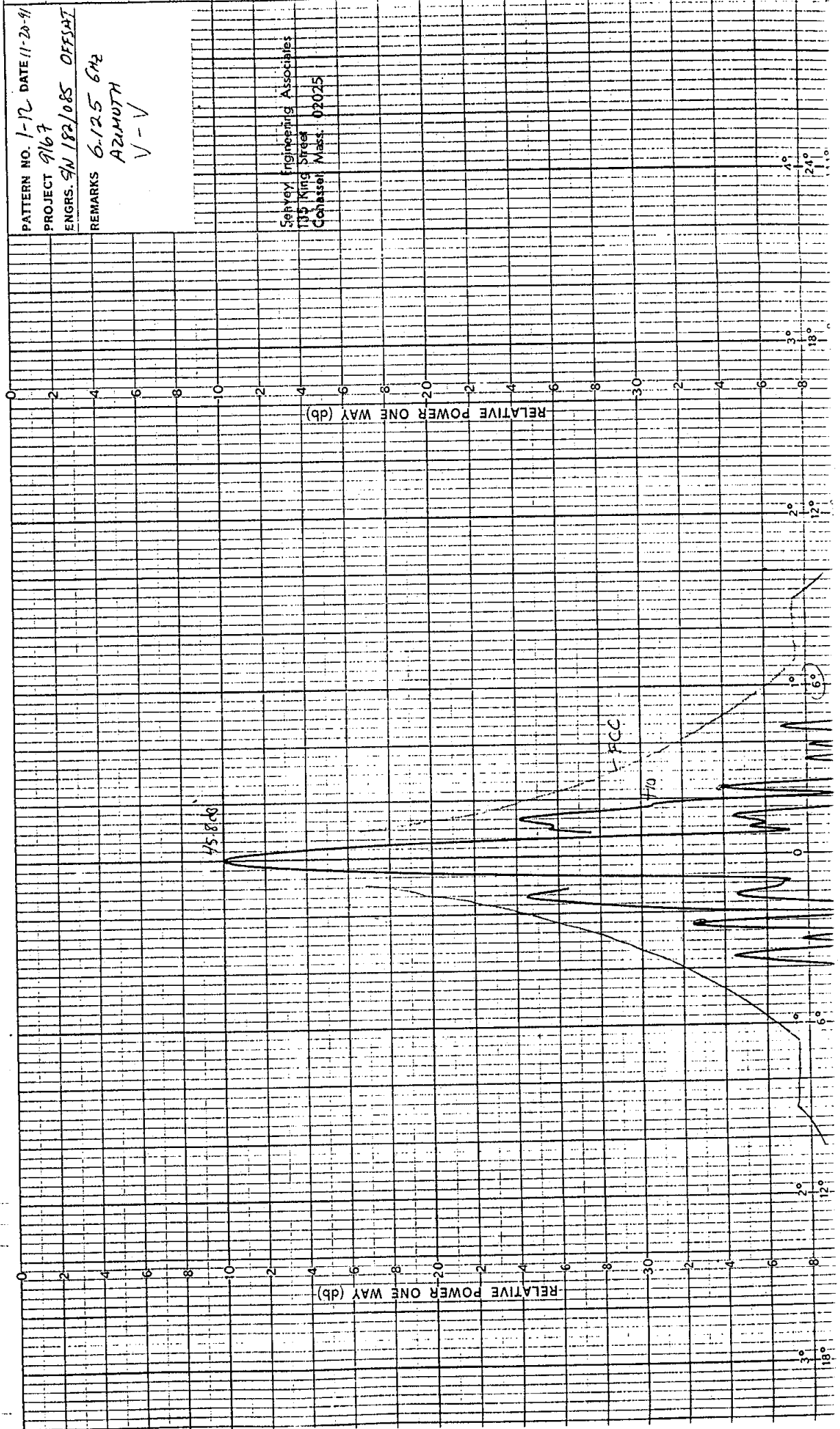
S/N 182/085

Seavey Engineering Associates
135 Kirk Street
Cohasset, Mass. 02025



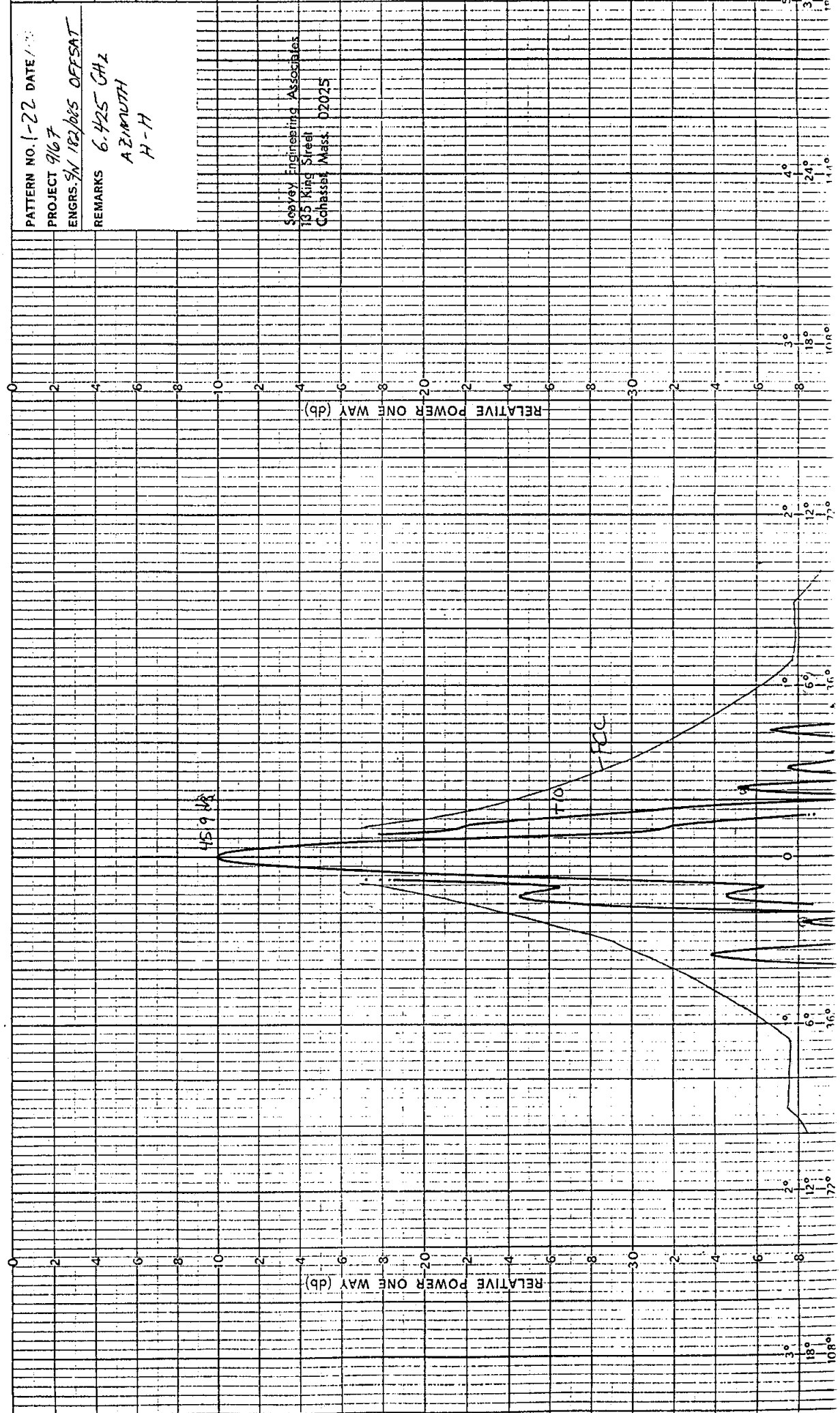
PATTERN NO. 1-12 DATE 11-20-91
 PROJECT 9167
 ENGRS. 9N 1821085 OFFSAT
 REMARKS 6.125 GHz
 AZIMUTH
 V-V

Sepsey Engineering Associates
 105 King Street
 Cohasset, Mass. 02025



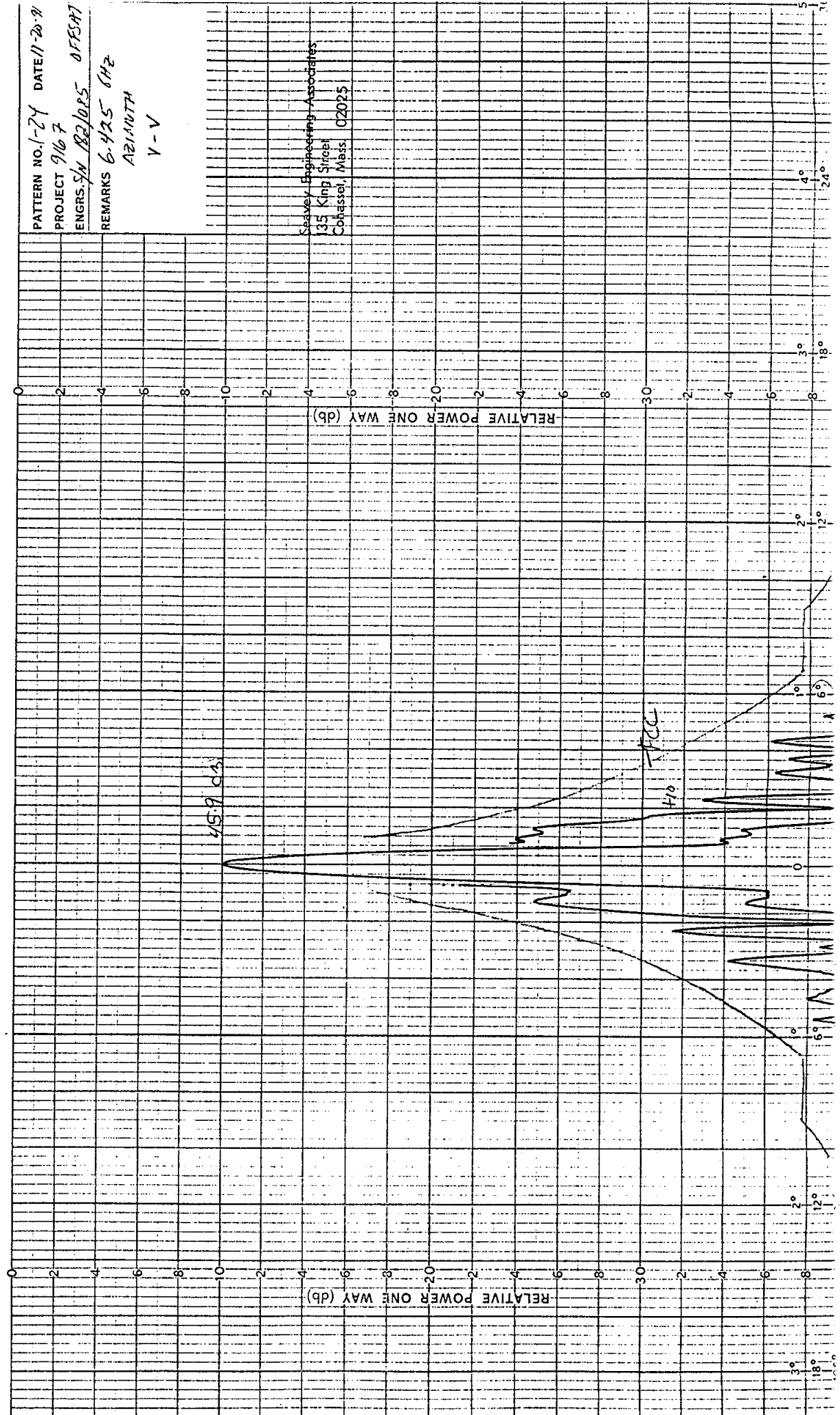
PATTERN NO. 1-22 DATE 1/73
 PROJECT 9167
 ENGRS. S/N 182/885 OFFSAT
 REMARKS 6.425 CH 2
 AZIMUTH
 H-H

Sesvey Engineering Associates
 185 King Street
 Cohasset, Mass. 02025



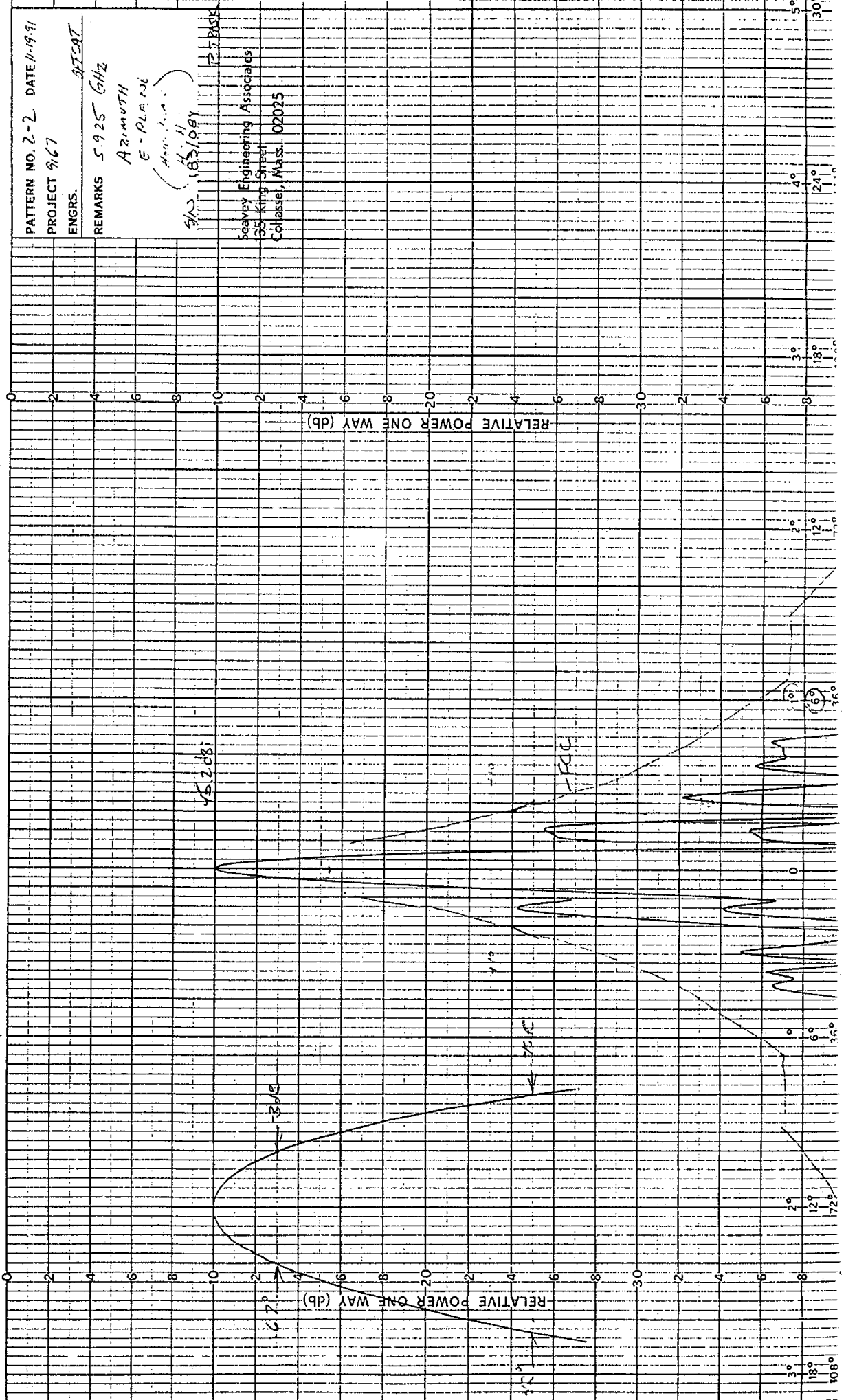
PATTERN NO. 1-24 DATE 11-20-79
 PROJECT 9167
 ENGRS. S/W 182/DPS OFFSAT
 REMARKS 6.475 MHz
 AZIMUTH
 V-V

Seavey Engineering Associates
 135 King Street
 Cohasset, Mass. 02025



PATTERN NO. 2-2 DATE 11-19-91
 PROJECT 9167
 ENGRS. JEF CAT
 REMARKS 5.925 GHz
 ARIZONA
 E-PLA, MI
 (Hess, Inc.)
 H. H.
 S/S 1831084
 P-1 BACK

Seavey Engineering Associates
 655 King Street
 Cohasset, Mass. 02025

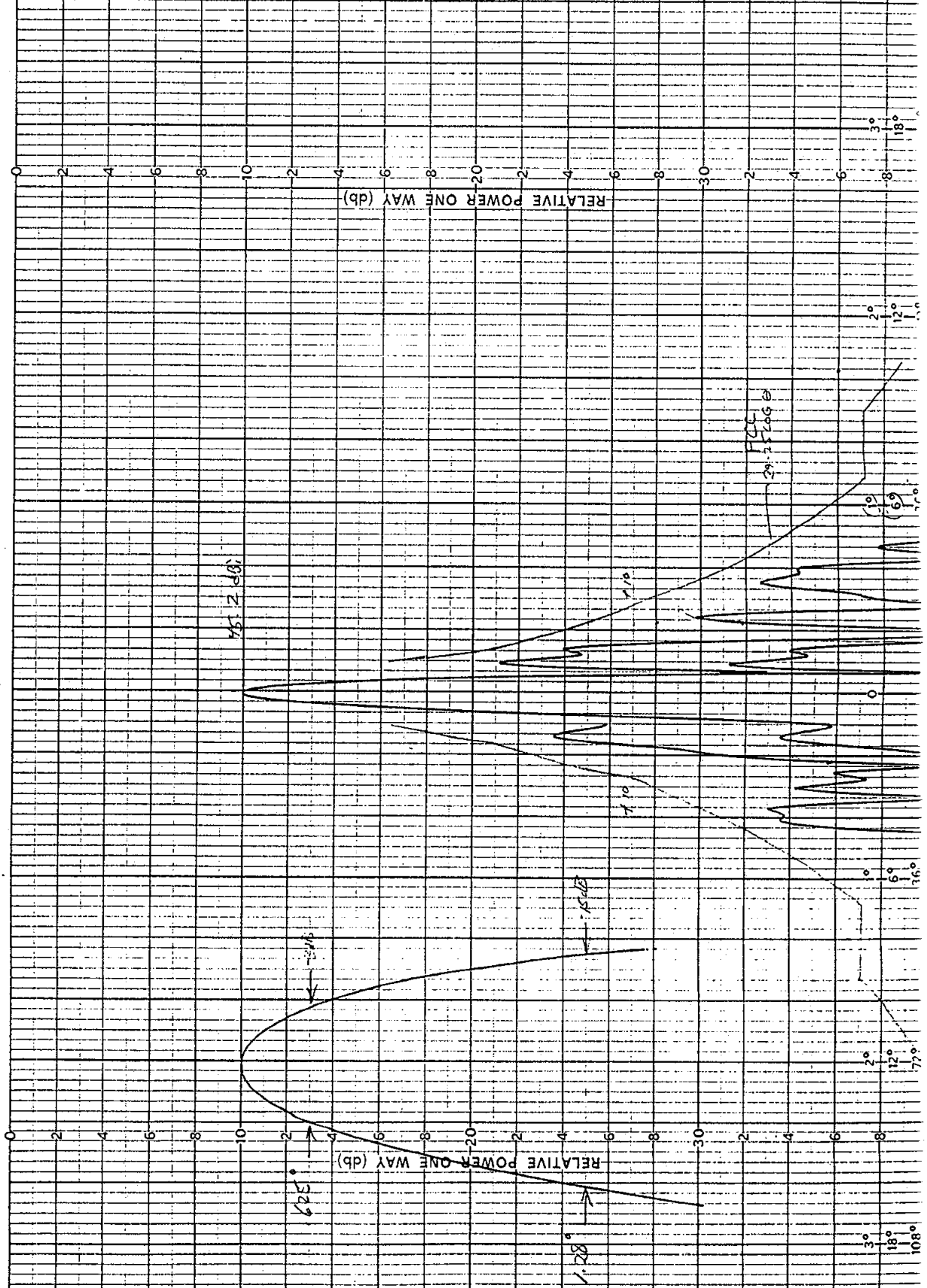


PATTERN NO. 2-4 DATE 11-18-59
 PROJECT 9167
 ENGRS. S/H 183/084 QES:RC

REMARKS 5.925 GHz
 H-PLANE (V-V)

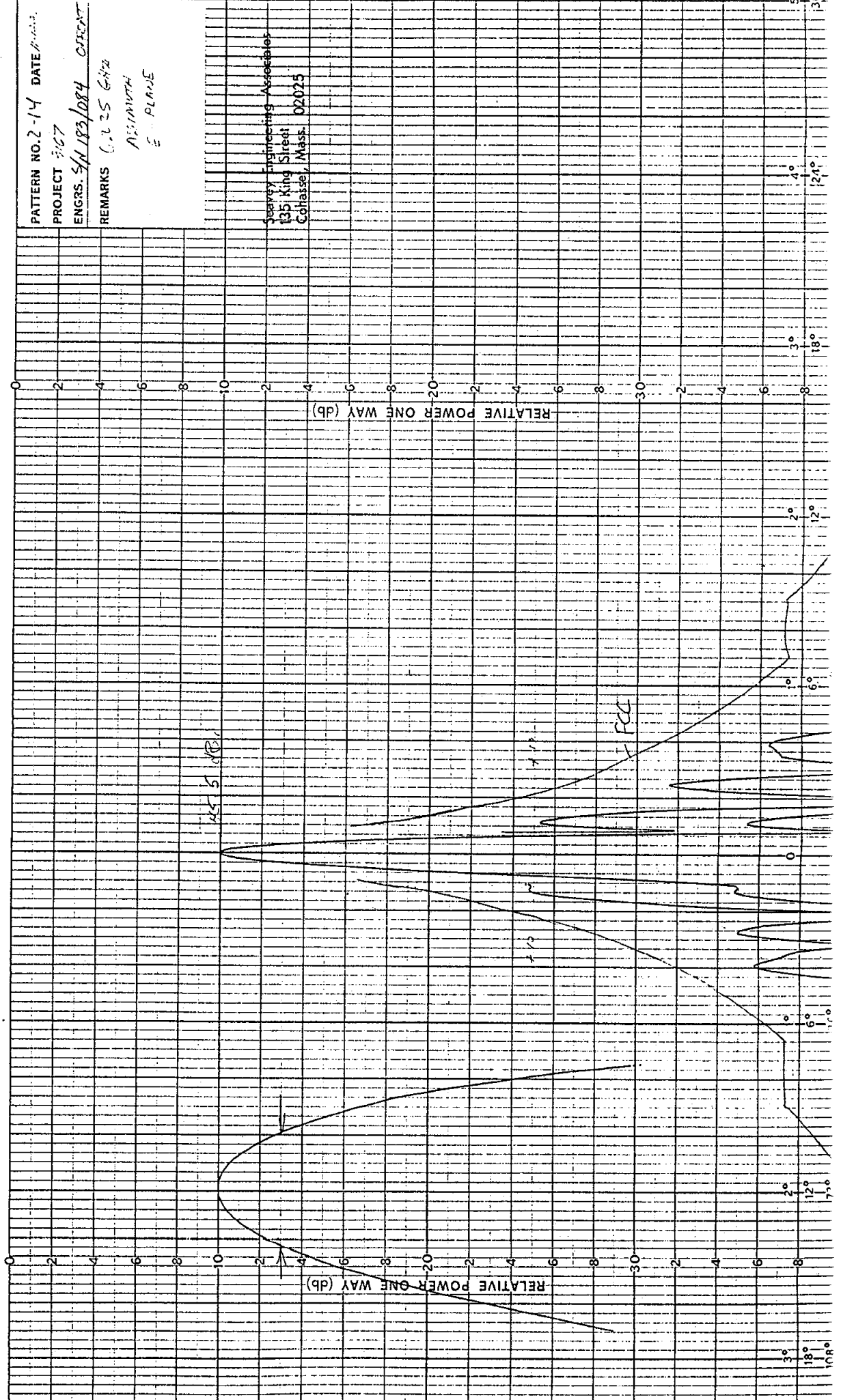
$\Gamma_{\lambda} = 0$ dB
 $\Gamma_{\lambda} = -30$ dB

Seavey Engineering Associates
 195 King Street
 Cohasset, Mass. 02025



PATTERN NO. 2-14 DATE 1/14/84
 PROJECT 3107
 ENGRS. S/M 183/DB4 C/FECAT
 REMARKS 0.225 GHz
 NORMAN
 E. PLANE

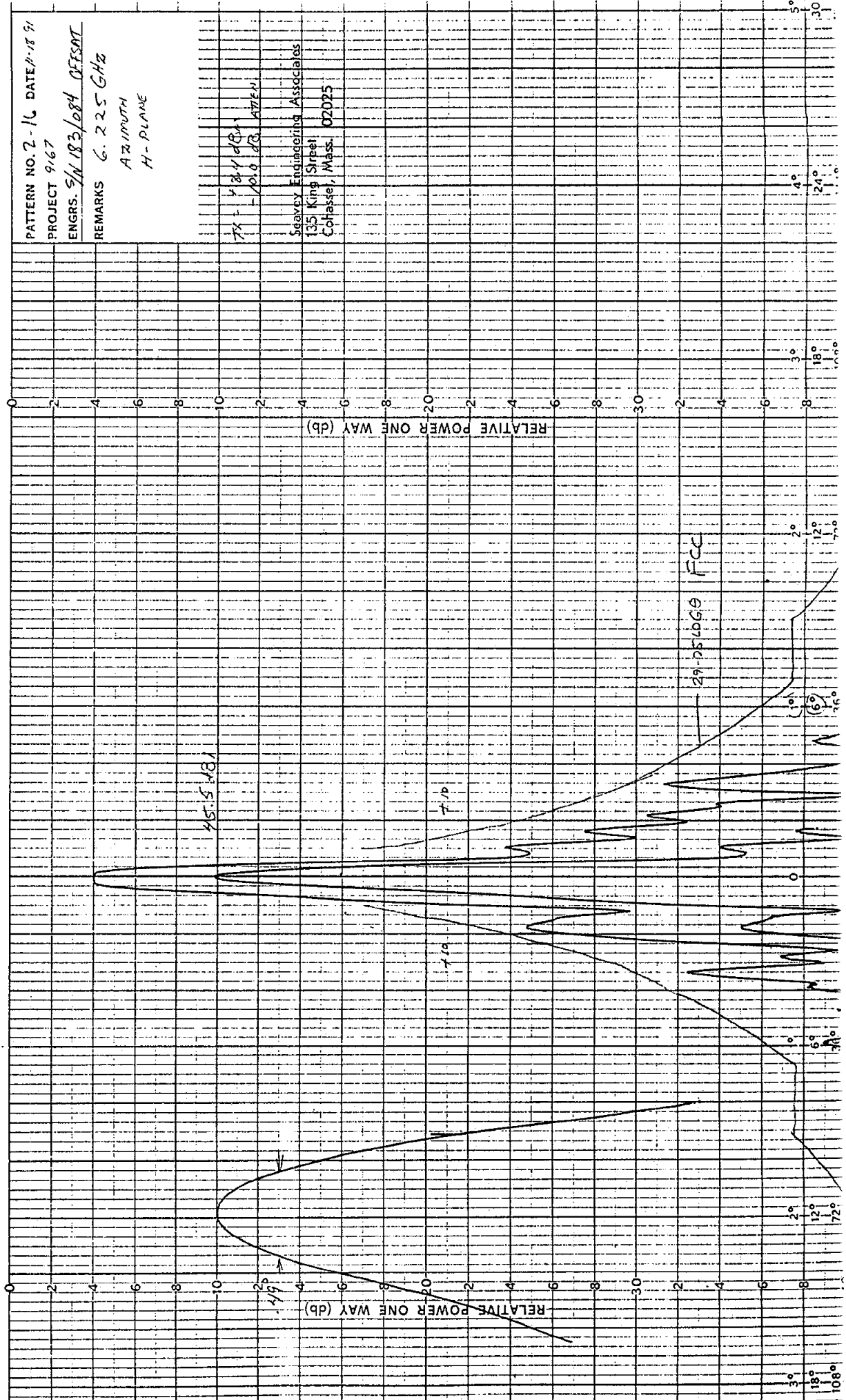
Seavoy Engineering Associates
 135 King Street
 Cohasset, Mass. 02025



PATTERN NO. 2-16 DATE 11-18-51
 PROJECT 9167
 ENGRS. S/N 183/084 OFFSAT
 REMARKS 6.225 GHz
 AZIMUTH
 H-PLANE

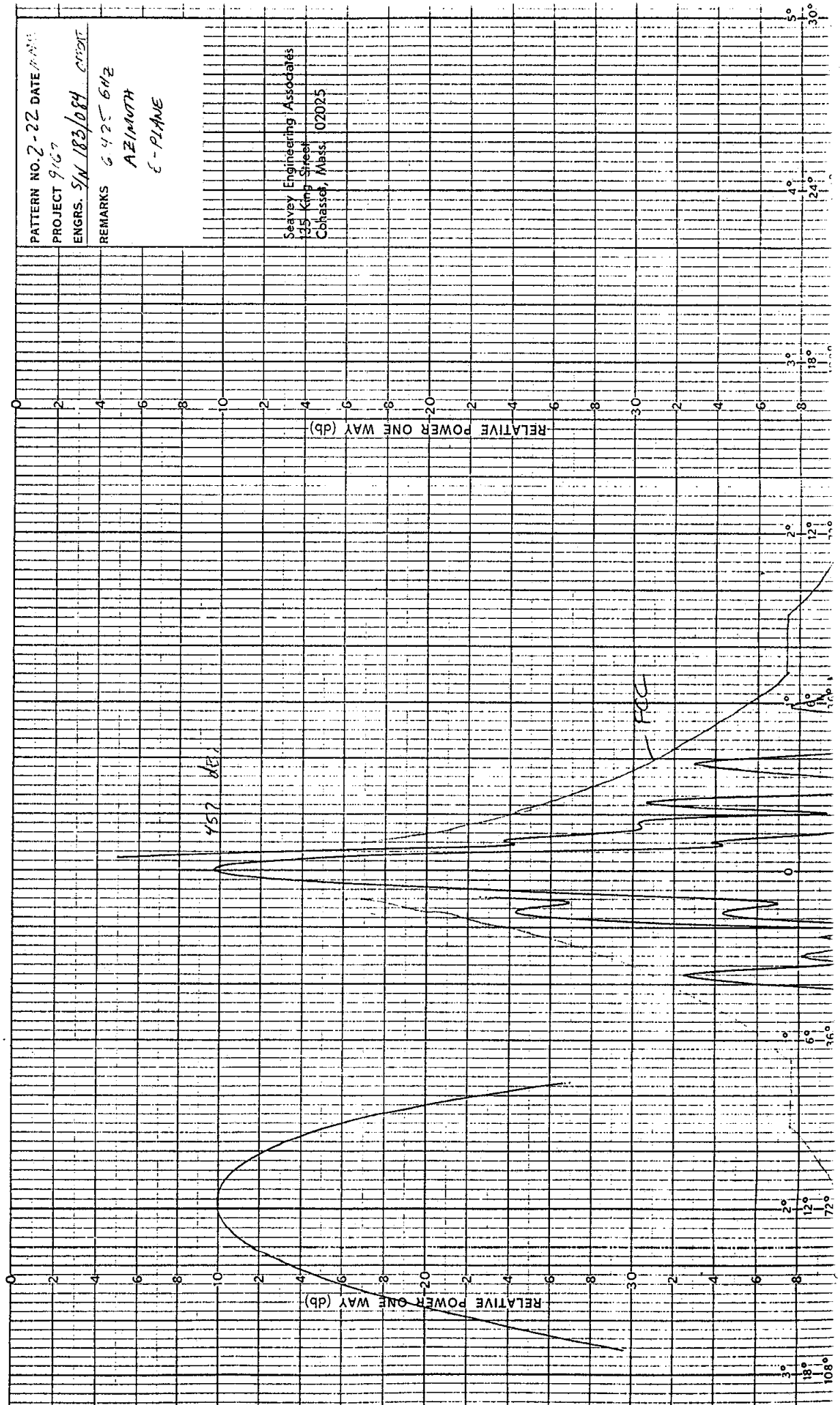
TS - 181 dBA
 - 10.0 dB ATEN

Seavey Engineering Associates
 135 King Street
 Cohasset, Mass. 02025



PATTERN NO. 2-22 DATE 1/1/55
 PROJECT 9107
 ENGRS. S/N 183/084 CREDIT
 REMARKS 6425 642
 AZIMUTH
 E-PLANE

Seavey Engineering Associates
 125 King Street
 Cohasset, Mass. 02025



PATTERN NO. 2-24 DATE 1/16/71
 PROJECT 967
 ENGRS. S/N 183/084 OFFSHORE
 REMARKS 6.125 GHz
 AZIMUTH
 H-PLANE

TX = 1.5 dBA
 RX = 30 dBA

Seavey Engineering Associates
 135 King Street
 Cohasset, Mass. 02025

