

Exhibit A

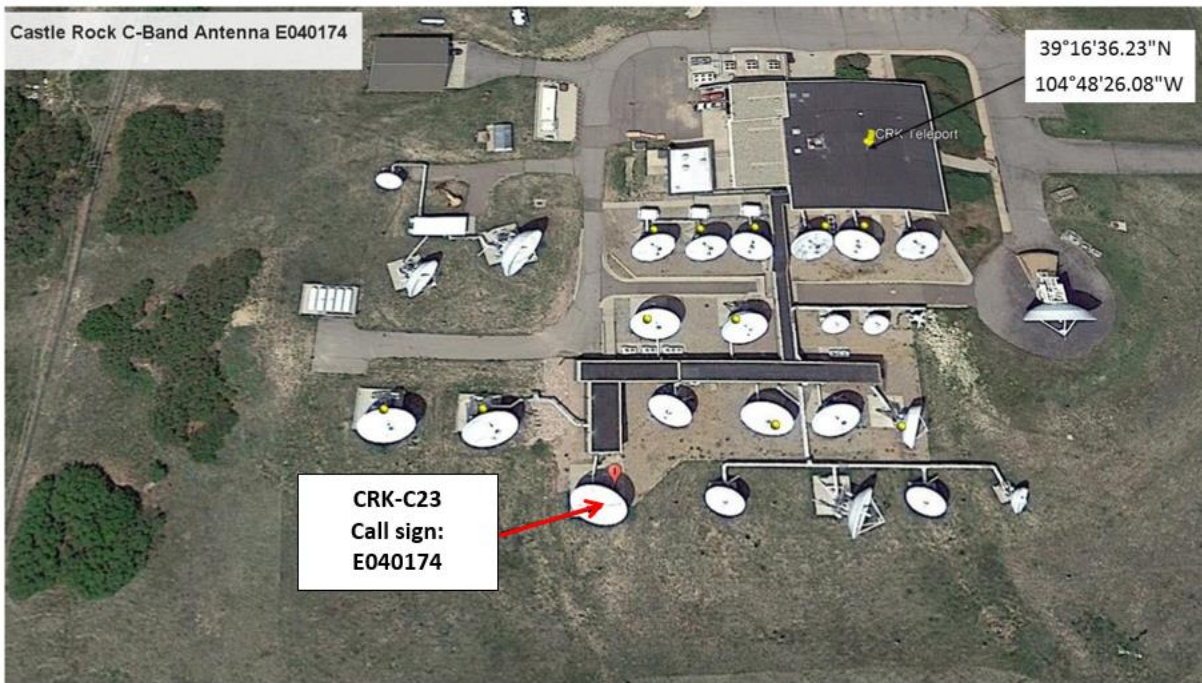
FCC Form 312, Response to Question 43: Description

Castle Rock, Colorado Earth Station; Call Sign E040174

In this modification application, Intelsat License LLC (“Intelsat”) requests the following changes:

- 1.) Add Galaxy 30 (Call Sign S3016) as a new point of communication.
- 2.) Add two new carriers—one telecommand and one telemetry carrier. These carriers are within the current licensed and coordinated frequency bands, arc, and EIRP-density levels.
- 3.) Change the antenna ID from 1 to CRK-C23.

Additionally, per the Federal Communications Commission’s guidance,¹ Intelsat provides the earth station coordinates based on WGS84 datum as an exhibit to this modification application.



E040174 is located at the following WGS84 coordinates:

39° 16' 36.23,\" -104° 48' 26.08\"

The current license and the Schedule B for this application provides the coordinates in NAD83. The above screen shot shows the antenna location.

¹ *International Bureau Addresses Accuracy of Earth Station Location Information in IBFS; Provides Guidance to Earth Station Licensees and Applicants, Public Notice, DA 17-1127 (rel. Nov. 21, 2017).*