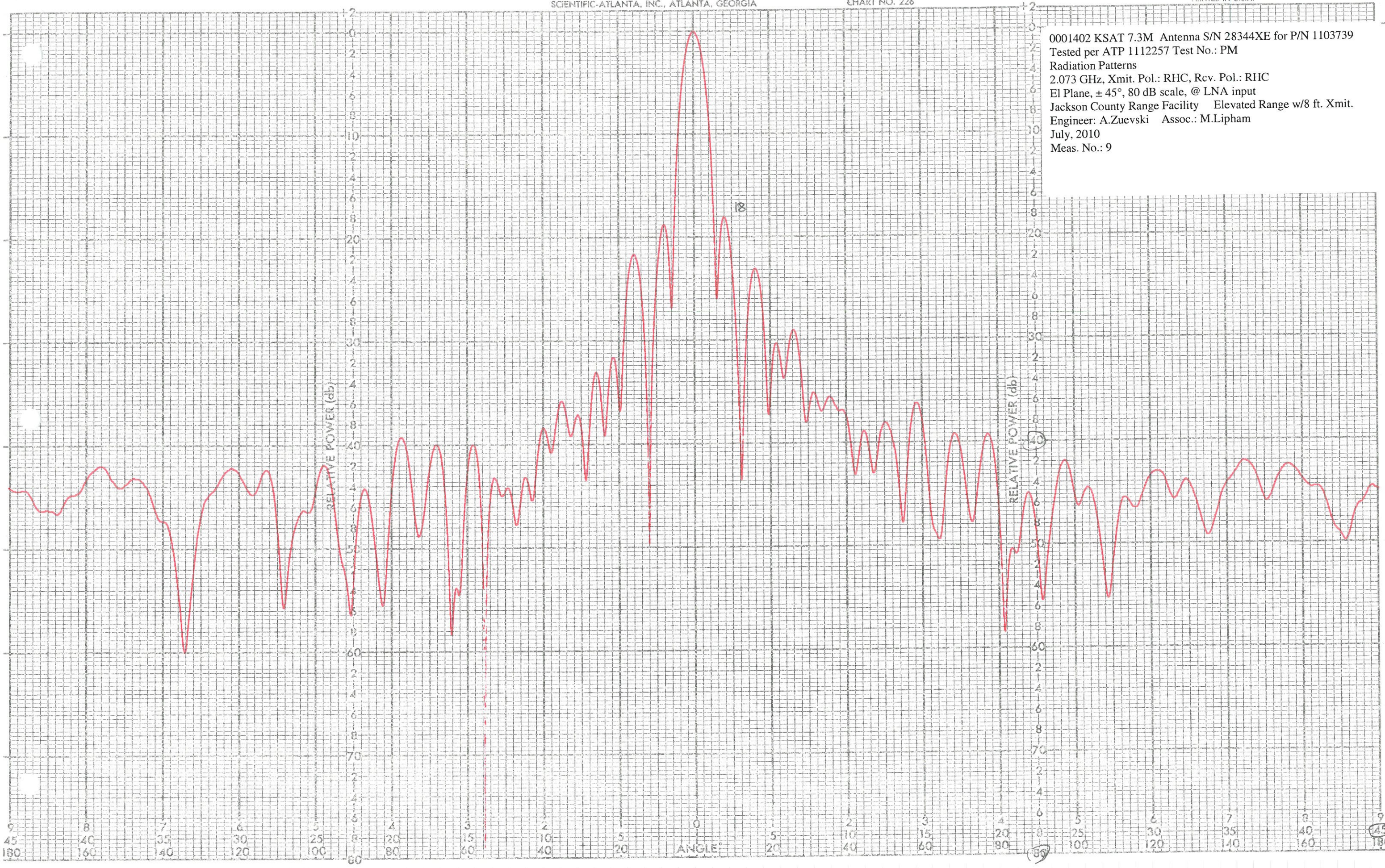


0001402 KSAT 7.3M Antenna S/N 28344XE for P/N 1103739
 Tested per ATP 1112257 Test No.: PM
 Radiation Patterns
 2.073 GHz, Xmit. Pol.: RHC, Rev. Pol.: RHC
 EI Plane, ± 45°, 80 dB scale, @ LNA input
 Jackson County Range Facility Elevated Range w/8 ft. Xmit.
 Engineer: A.Zuevski Assoc.: M.Lipham
 July, 2010
 Meas. No.: 9



111766

DATE

ENGR

PROJECT REMARKS 2.073 RHC El. 90

PROJECT REMARKS

45
180