

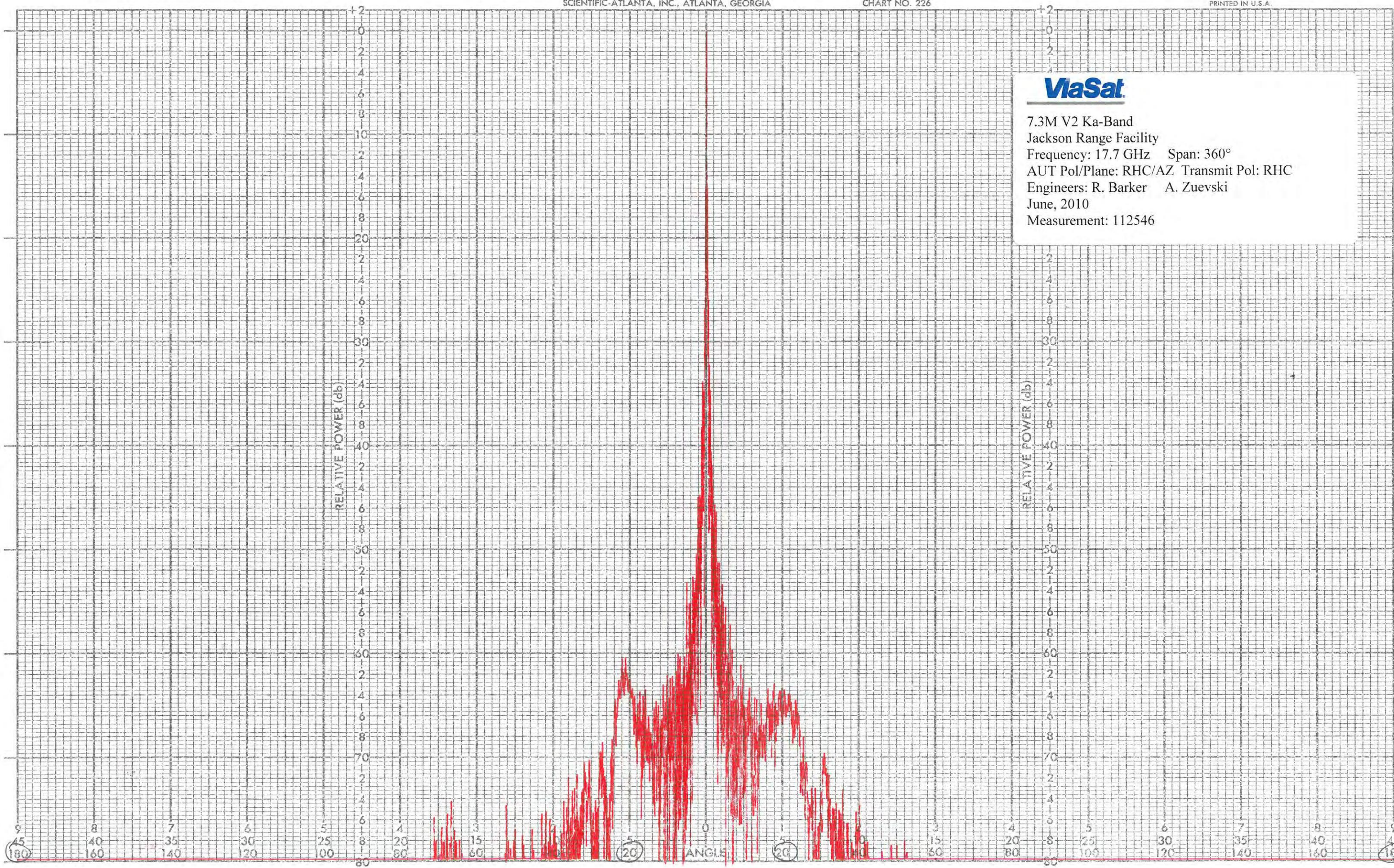
**Exhibit C**

**FCC 25.209 Antenna Gain Performance Plots**





7.3M V2 Ka-Band  
 Jackson Range Facility  
 Frequency: 17.7 GHz Span: 360°  
 AUT Pol/Plane: RHC/AZ Transmit Pol: RHC  
 Engineers: R. Barker A. Zuevski  
 June, 2010  
 Measurement: 112546



112546

DATE

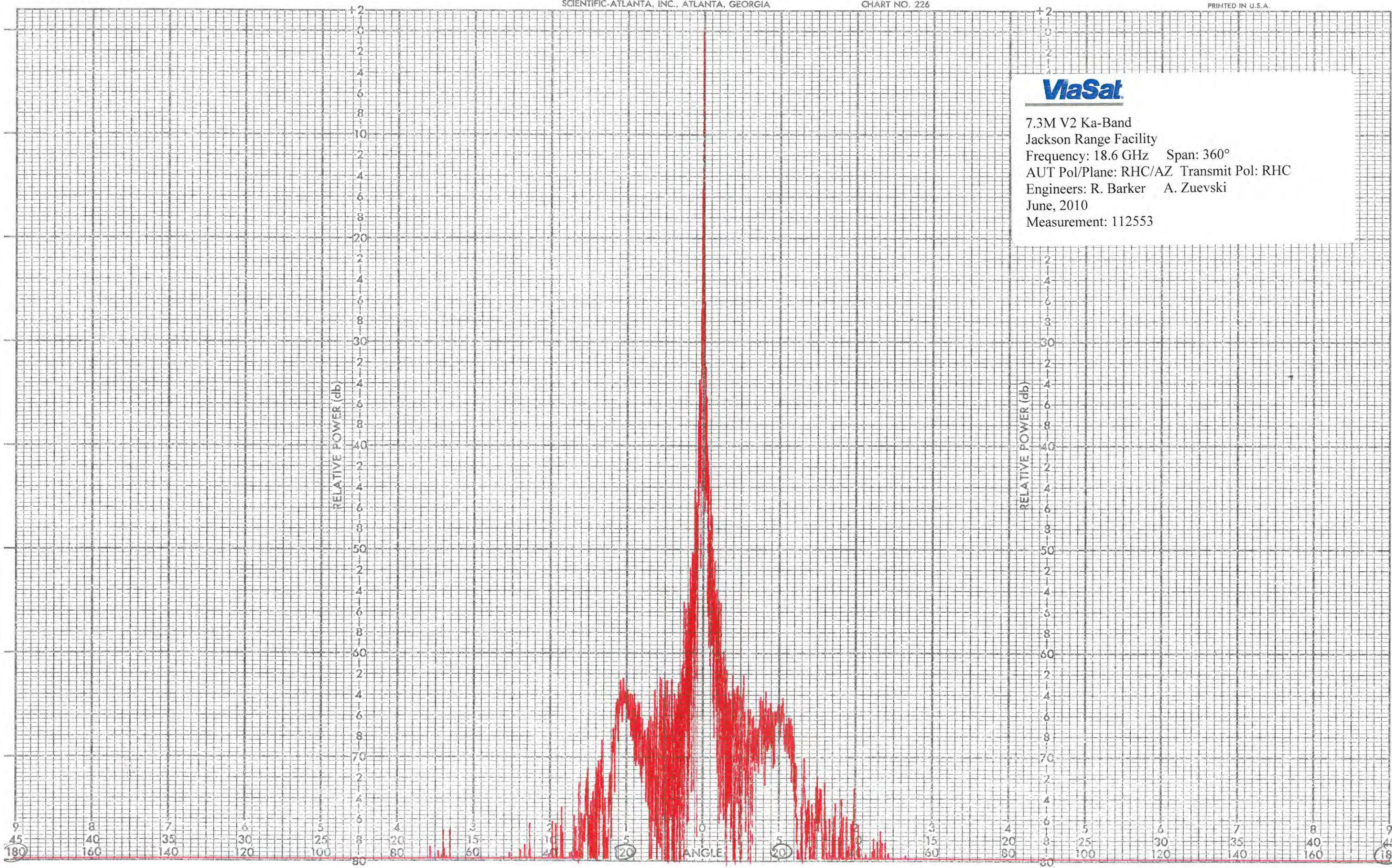
ENGR

PROJECT  
REMARKS





7.3M V2 Ka-Band  
 Jackson Range Facility  
 Frequency: 18.6 GHz Span: 360°  
 AUT Pol/Plane: RHC/AZ Transmit Pol: RHC  
 Engineers: R. Barker A. Zuevski  
 June, 2010  
 Measurement: 112553



112553

DATE

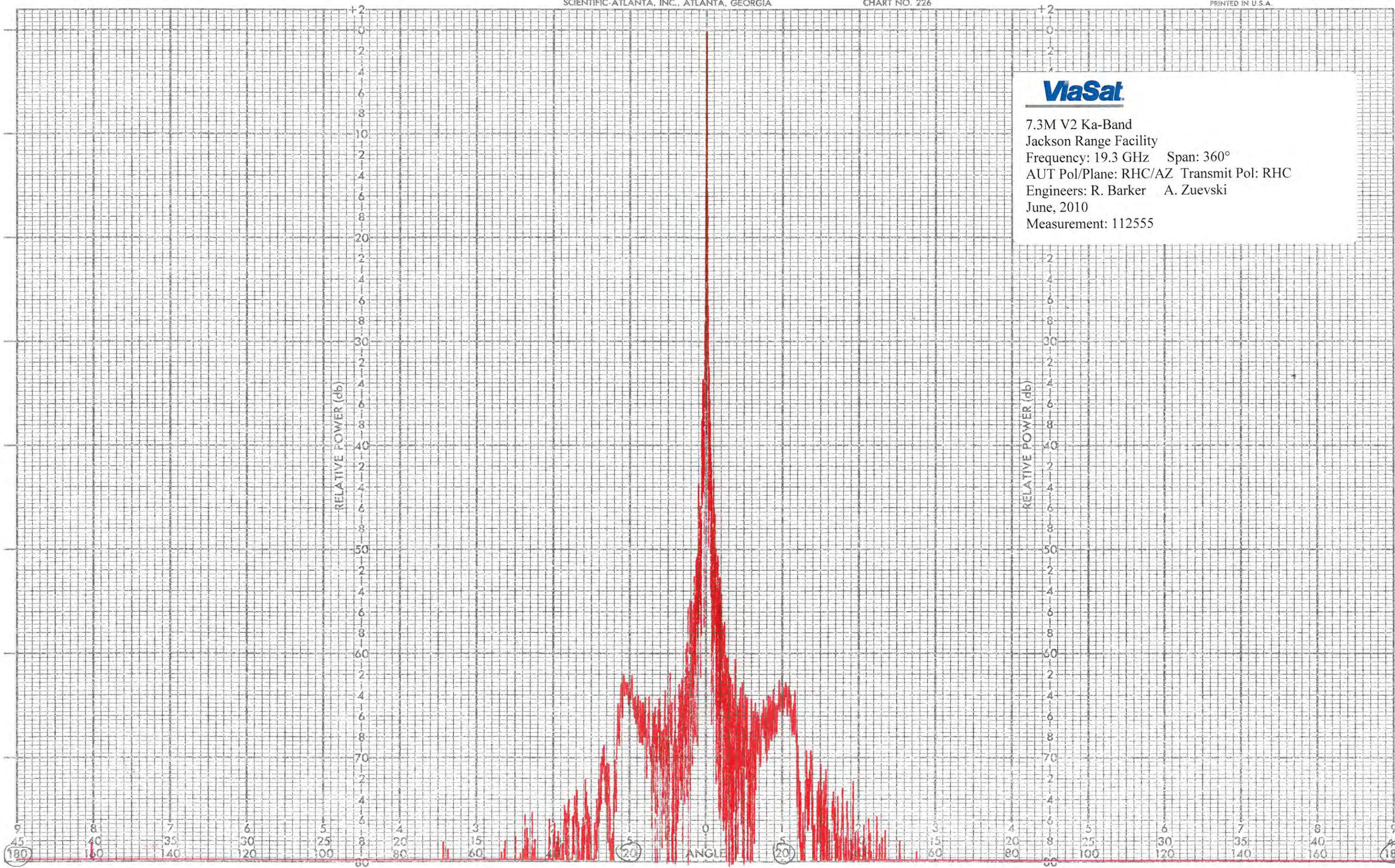
ENGR

PROJECT  
REMARKS





7.3M V2 Ka-Band  
 Jackson Range Facility  
 Frequency: 19.3 GHz Span: 360°  
 AUT Pol/Plane: RHC/AZ Transmit Pol: RHC  
 Engineers: R. Barker A. Zuevski  
 June, 2010  
 Measurement: 112555



112555

DATE

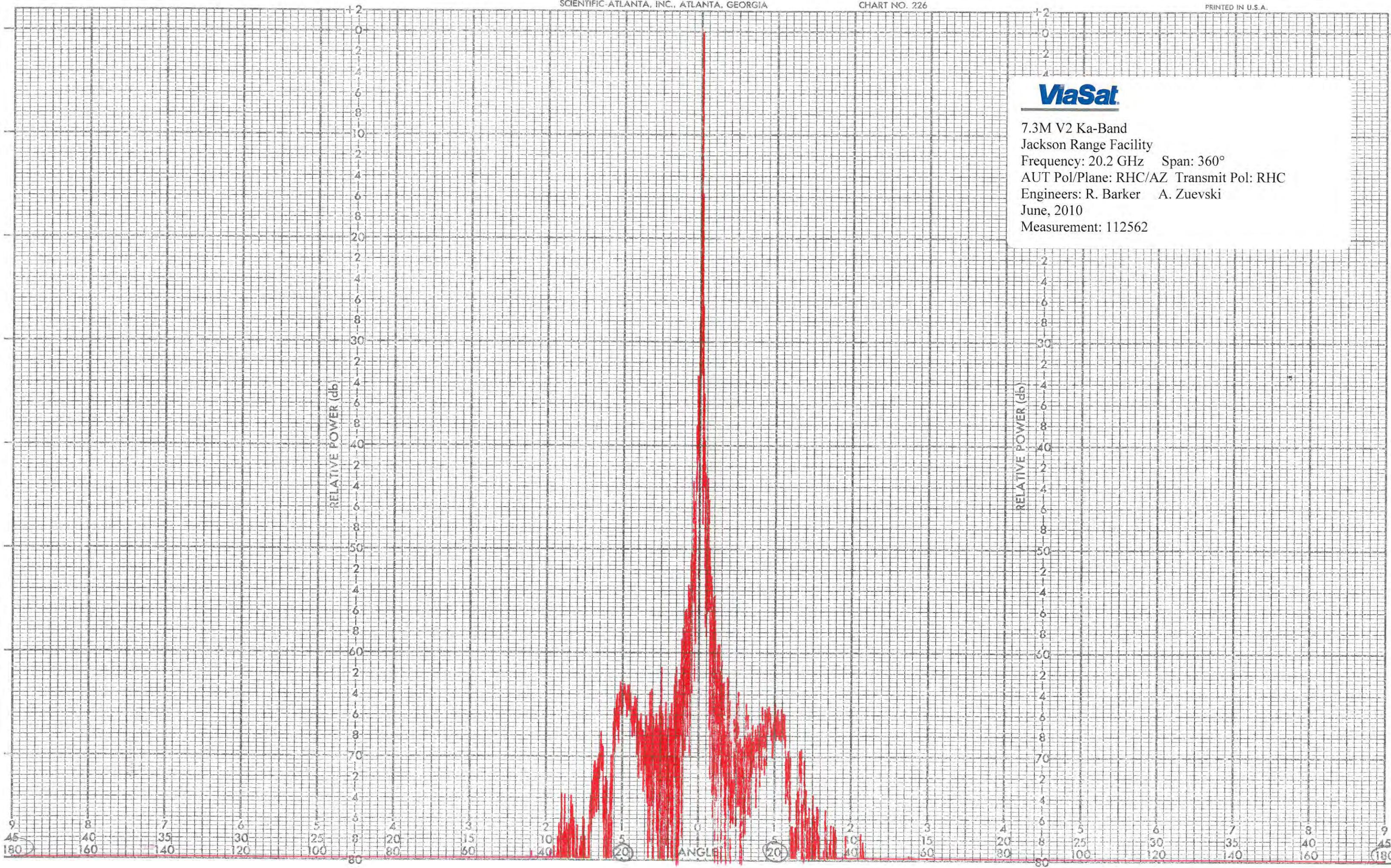
ENGR

PROJECT  
REMARKS





7.3M V2 Ka-Band  
Jackson Range Facility  
Frequency: 20.2 GHz Span: 360°  
AUT Pol/Plane: RHC/AZ Transmit Pol: RHC  
Engineers: R. Barker A. Zuevski  
June, 2010  
Measurement: 112562

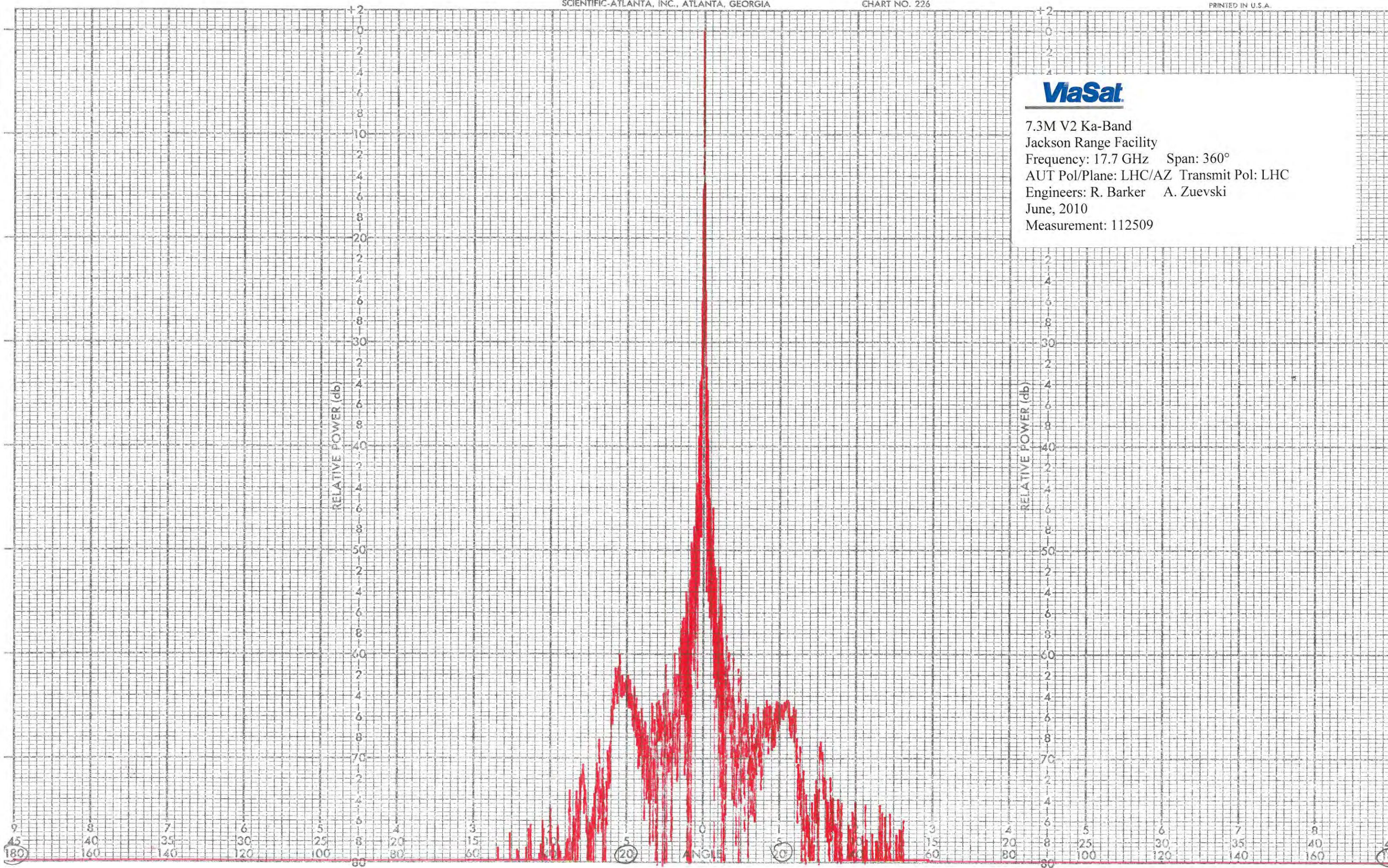


112562  
DATE  
ENGR  
PROJECT  
REMARKS





7.3M V2 Ka-Band  
 Jackson Range Facility  
 Frequency: 17.7 GHz Span: 360°  
 AUT Pol/Plane: LHC/AZ Transmit Pol: LHC  
 Engineers: R. Barker A. Zuevski  
 June, 2010  
 Measurement: 112509

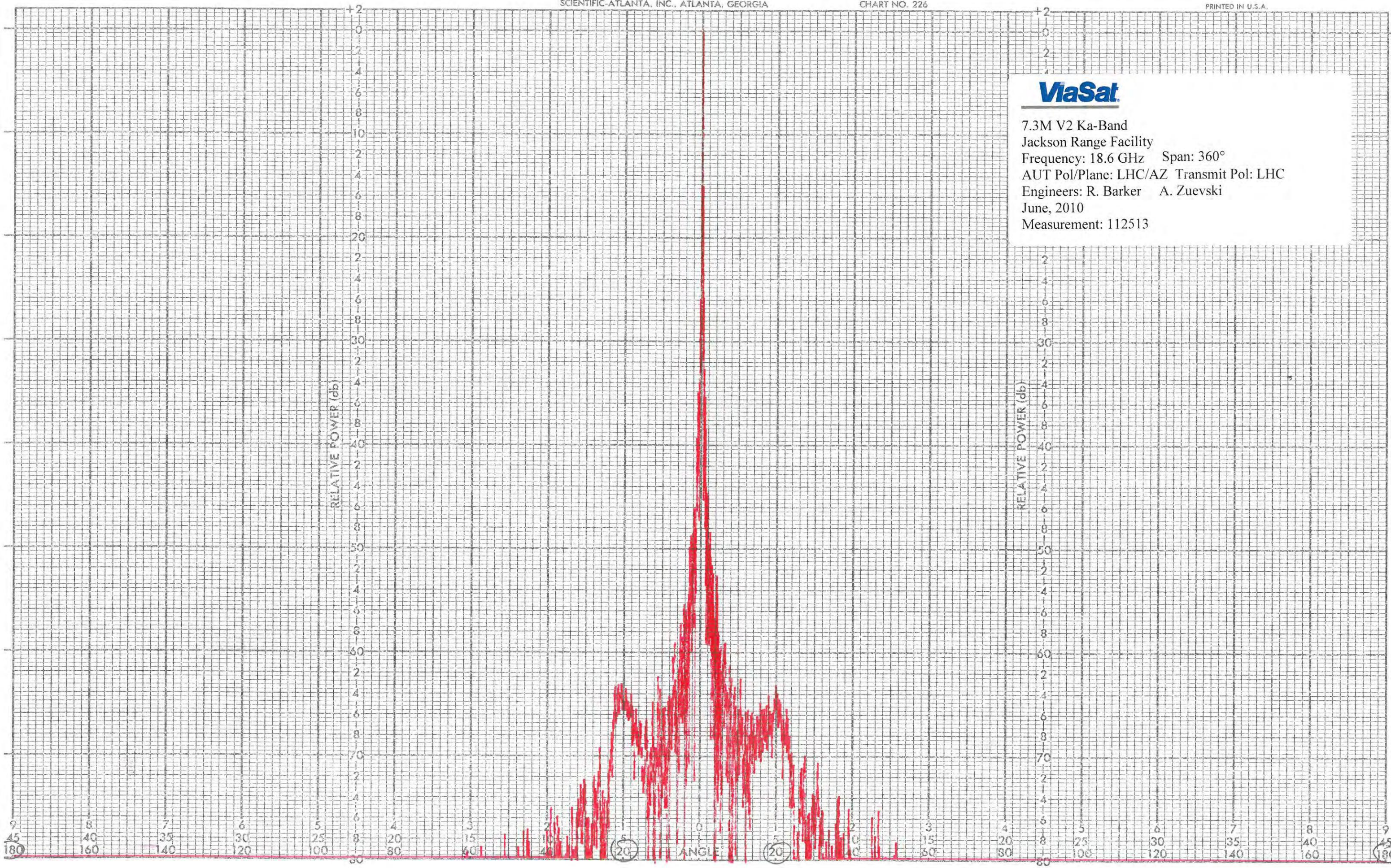


112509  
 DATE  
 ENGR  
 PROJECT  
 REMARKS





7.3M V2 Ka-Band  
 Jackson Range Facility  
 Frequency: 18.6 GHz Span: 360°  
 AUT Pol/Plane: LHC/AZ Transmit Pol: LHC  
 Engineers: R. Barker A. Zuevski  
 June, 2010  
 Measurement: 112513

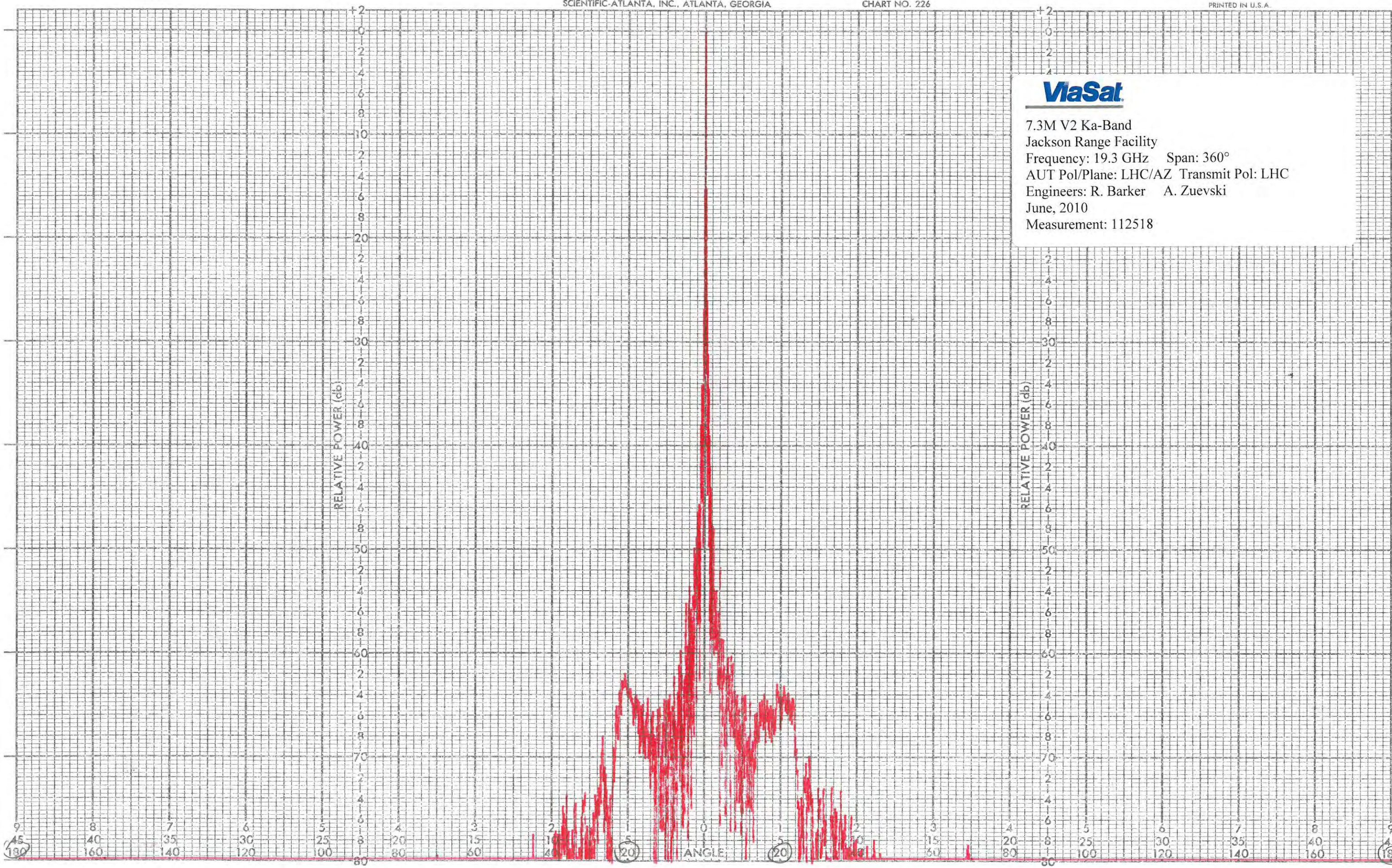


DATE 112513  
 ENGR  
 PROJECT REMARKS





7.3M V2 Ka-Band  
 Jackson Range Facility  
 Frequency: 19.3 GHz Span: 360°  
 AUT Pol/Plane: LHC/AZ Transmit Pol: LHC  
 Engineers: R. Barker A. Zuevski  
 June, 2010  
 Measurement: 112518



112518

DATE

ENGR

PROJECT  
REMARKS



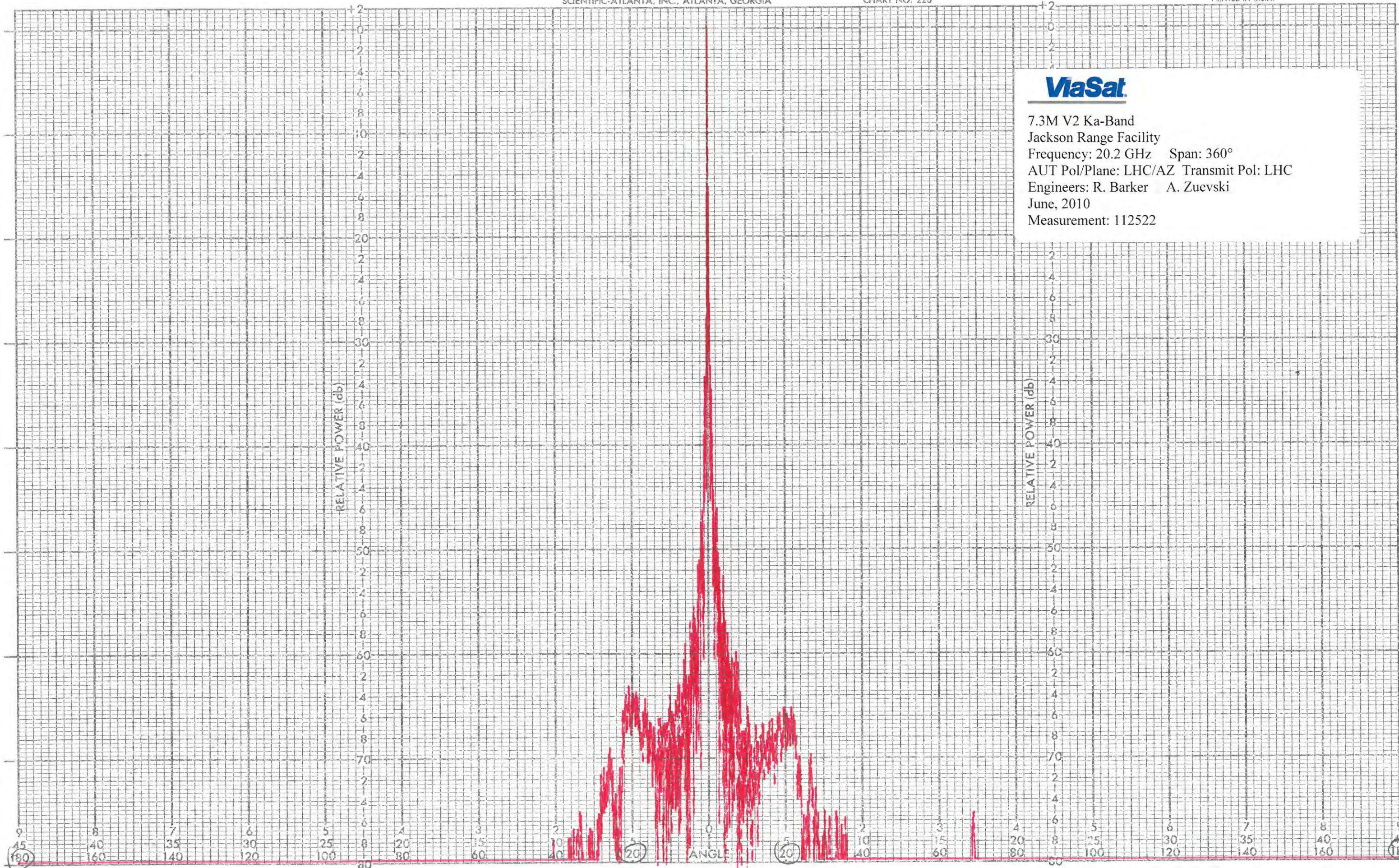


7.3M V2 Ka-Band  
 Jackson Range Facility  
 Frequency: 20.2 GHz Span: 360°  
 AUT Pol/Plane: LHC/AZ Transmit Pol: LHC  
 Engineers: R. Barker A. Zuevski  
 June, 2010  
 Measurement: 112522

RELATIVE POWER (db)

RELATIVE POWER (db)

ANGLE



112522

DATE

ENGR

PROJECT  
REMARKS