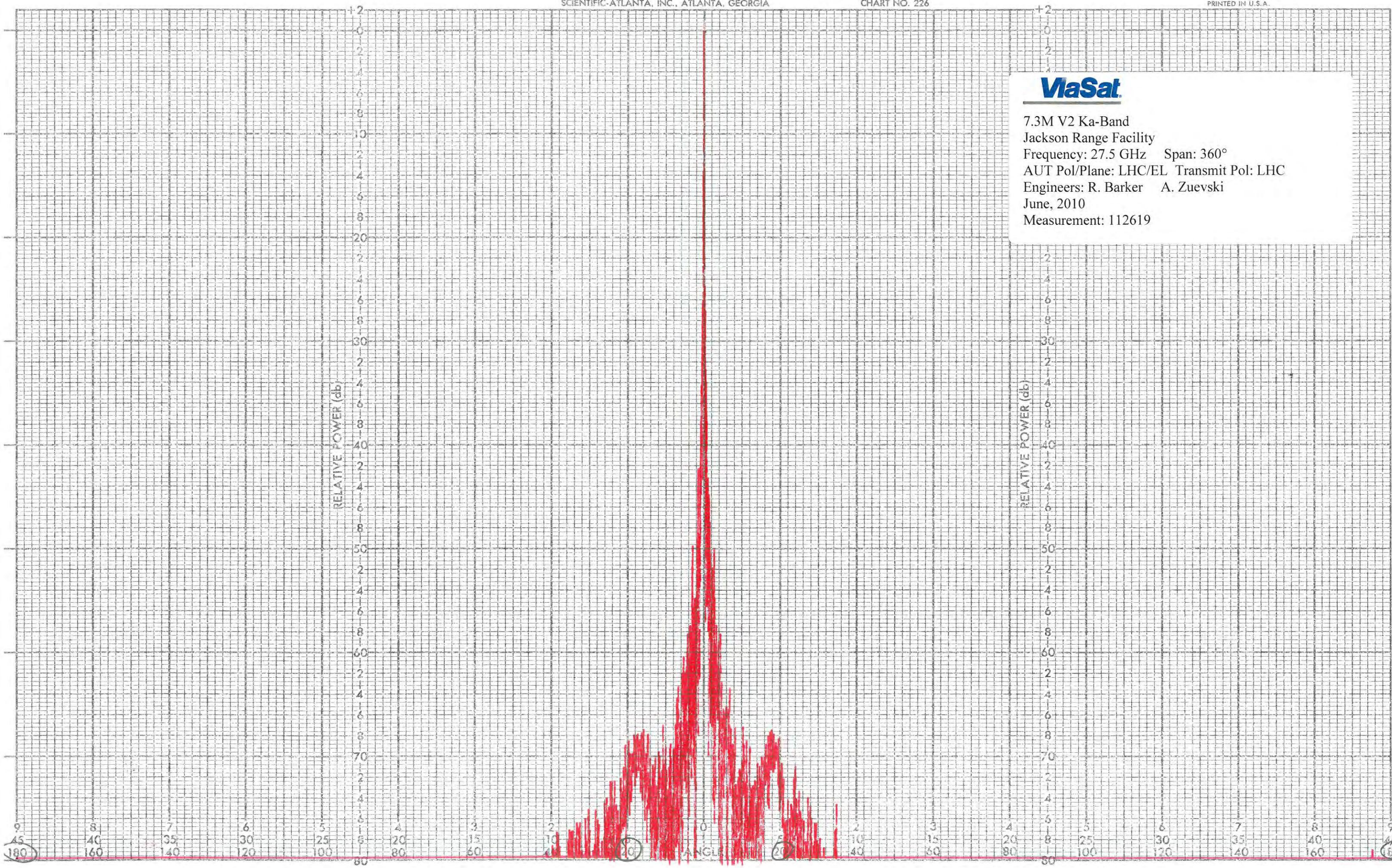


**Exhibit C**

**FCC 25.209 Antenna Gain Performance Plots**



7.3M V2 Ka-Band  
 Jackson Range Facility  
 Frequency: 27.5 GHz Span: 360°  
 AUT Pol/Plane: LHC/EL Transmit Pol: LHC  
 Engineers: R. Barker A. Zuevski  
 June, 2010  
 Measurement: 112619



112619

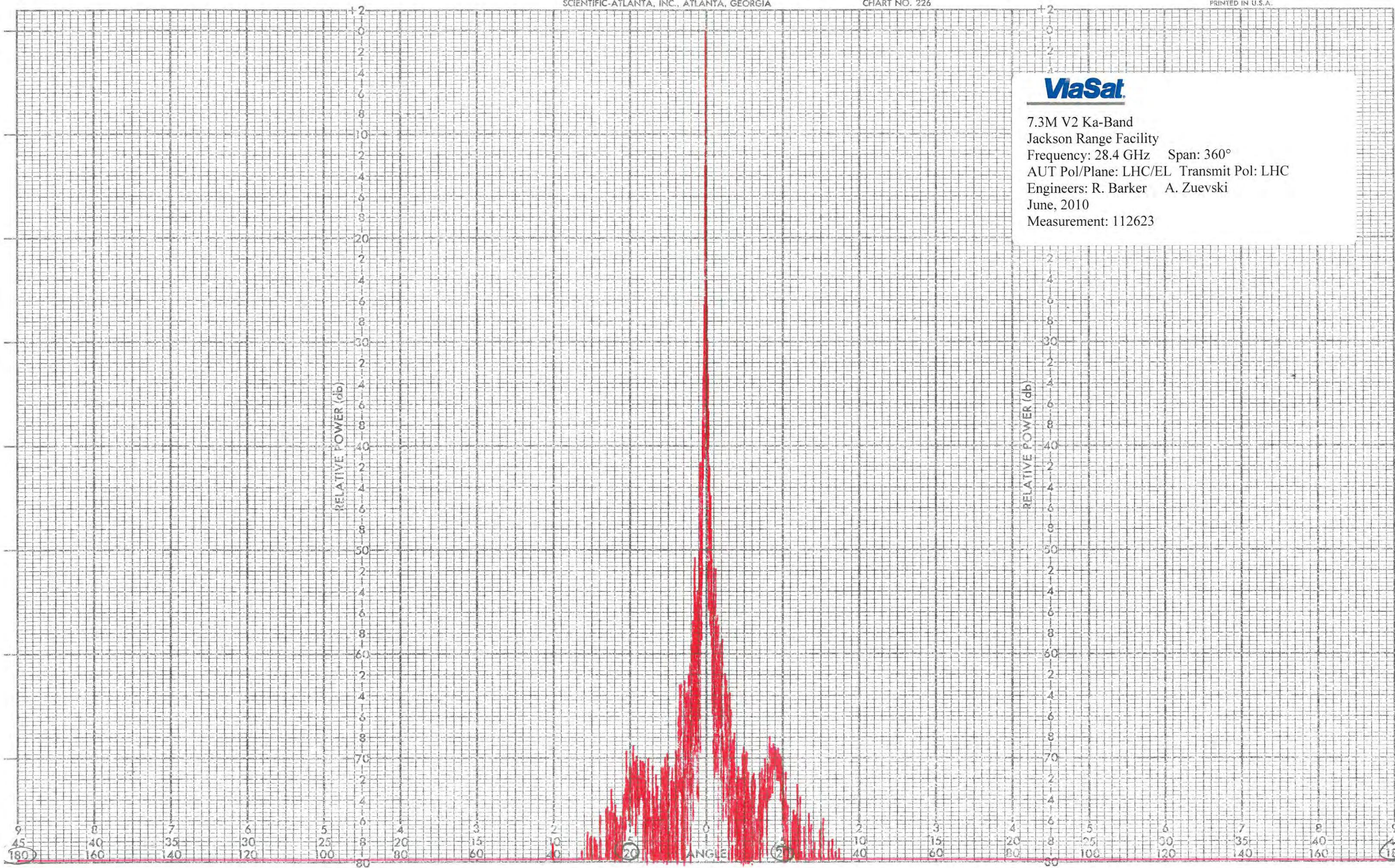
DATE

ENGR

PROJECT  
REMARKS



7.3M V2 Ka-Band  
 Jackson Range Facility  
 Frequency: 28.4 GHz Span: 360°  
 AUT Pol/Plane: LHC/EL Transmit Pol: LHC  
 Engineers: R. Barker A. Zuevski  
 June, 2010  
 Measurement: 112623



112623

DATE

ENGR

PROJECT  
REMARKS



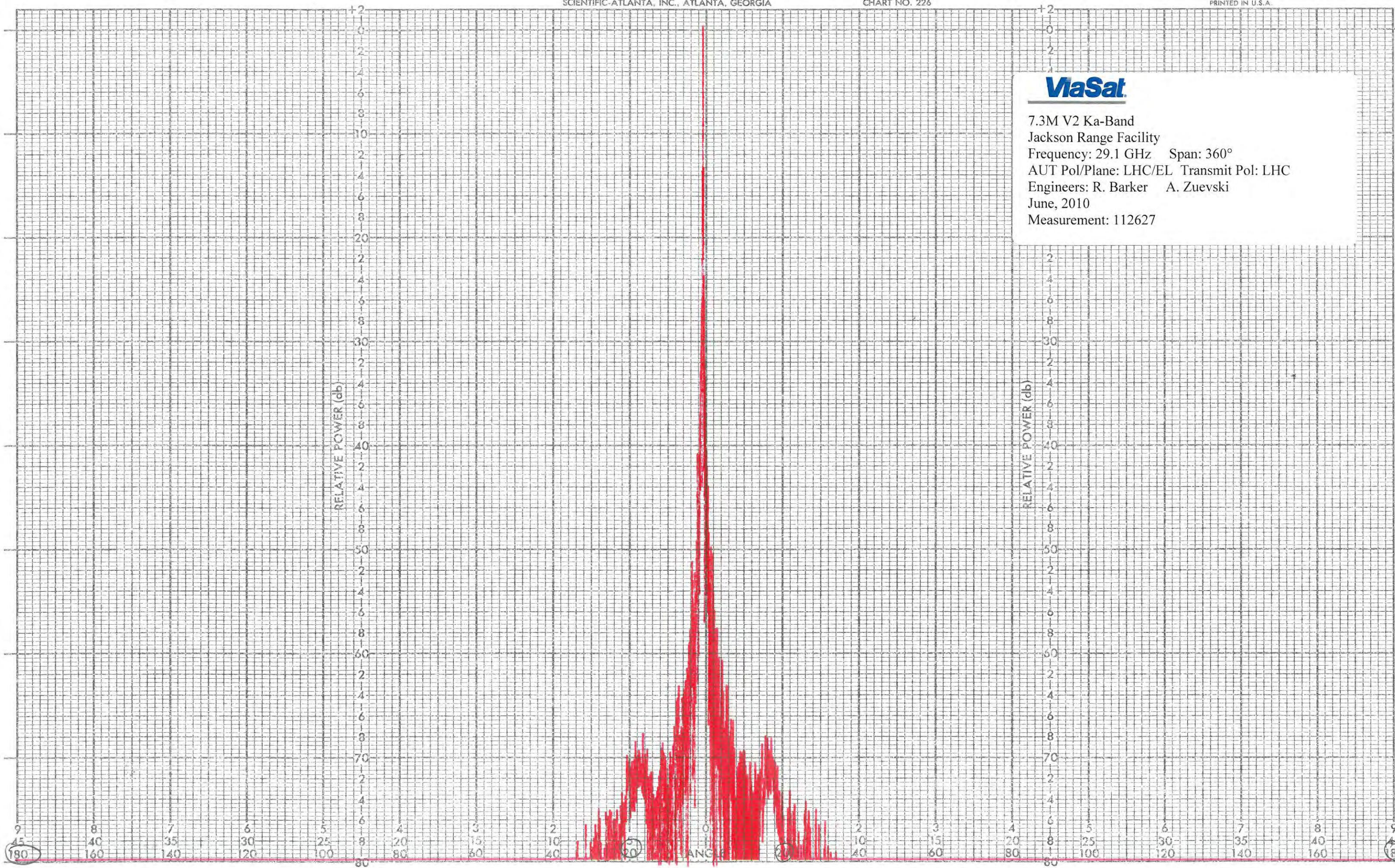
7.3M V2 Ka-Band  
 Jackson Range Facility  
 Frequency: 29.1 GHz Span: 360°  
 AUT Pol/Plane: LHC/EL Transmit Pol: LHC  
 Engineers: R. Barker A. Zuevski  
 June, 2010  
 Measurement: 112627

112627

DATE

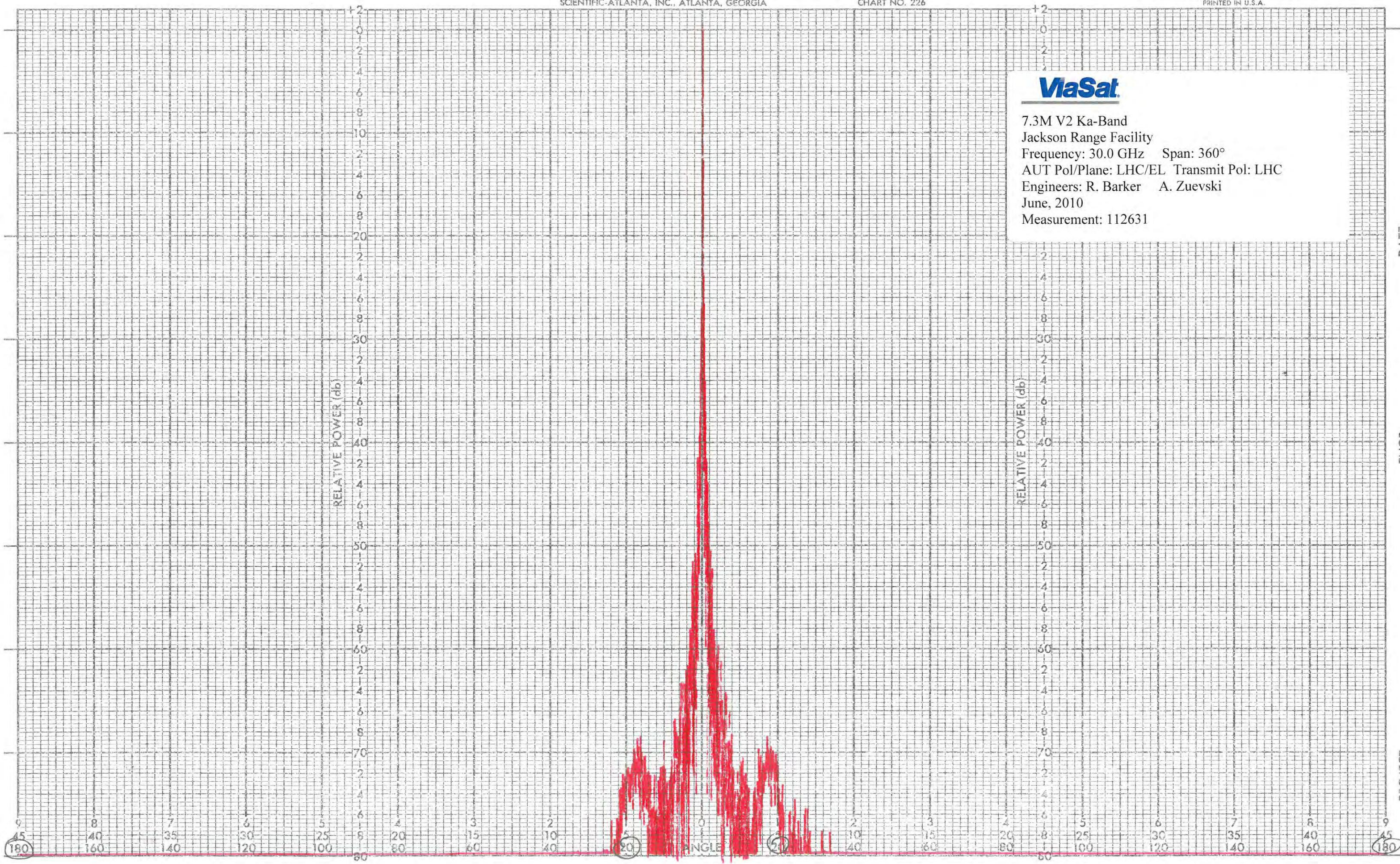
ENGR

PROJECT  
REMARKS





7.3M V2 Ka-Band  
 Jackson Range Facility  
 Frequency: 30.0 GHz Span: 360°  
 AUT Pol/Plane: LHC/EL Transmit Pol: LHC  
 Engineers: R. Barker A. Zuevski  
 June, 2010  
 Measurement: 112631



112631

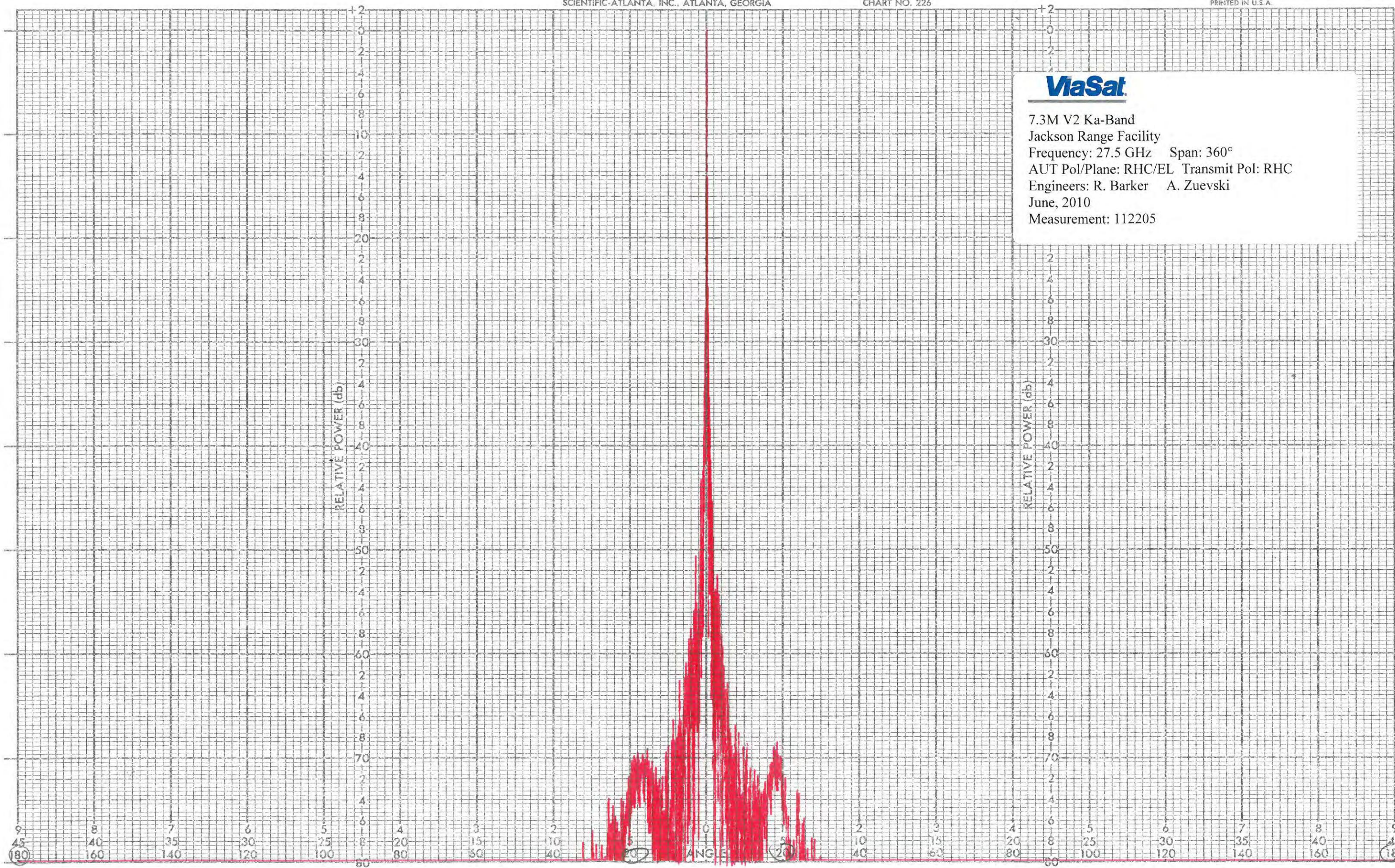
DATE

ENGR

PROJECT  
REMARKS



7.3M V2 Ka-Band  
 Jackson Range Facility  
 Frequency: 27.5 GHz Span: 360°  
 AUT Pol/Plane: RHC/EL Transmit Pol: RHC  
 Engineers: R. Barker A. Zuevski  
 June, 2010  
 Measurement: 112205



112205

DATE

ENGR

PROJECT  
REMARKS



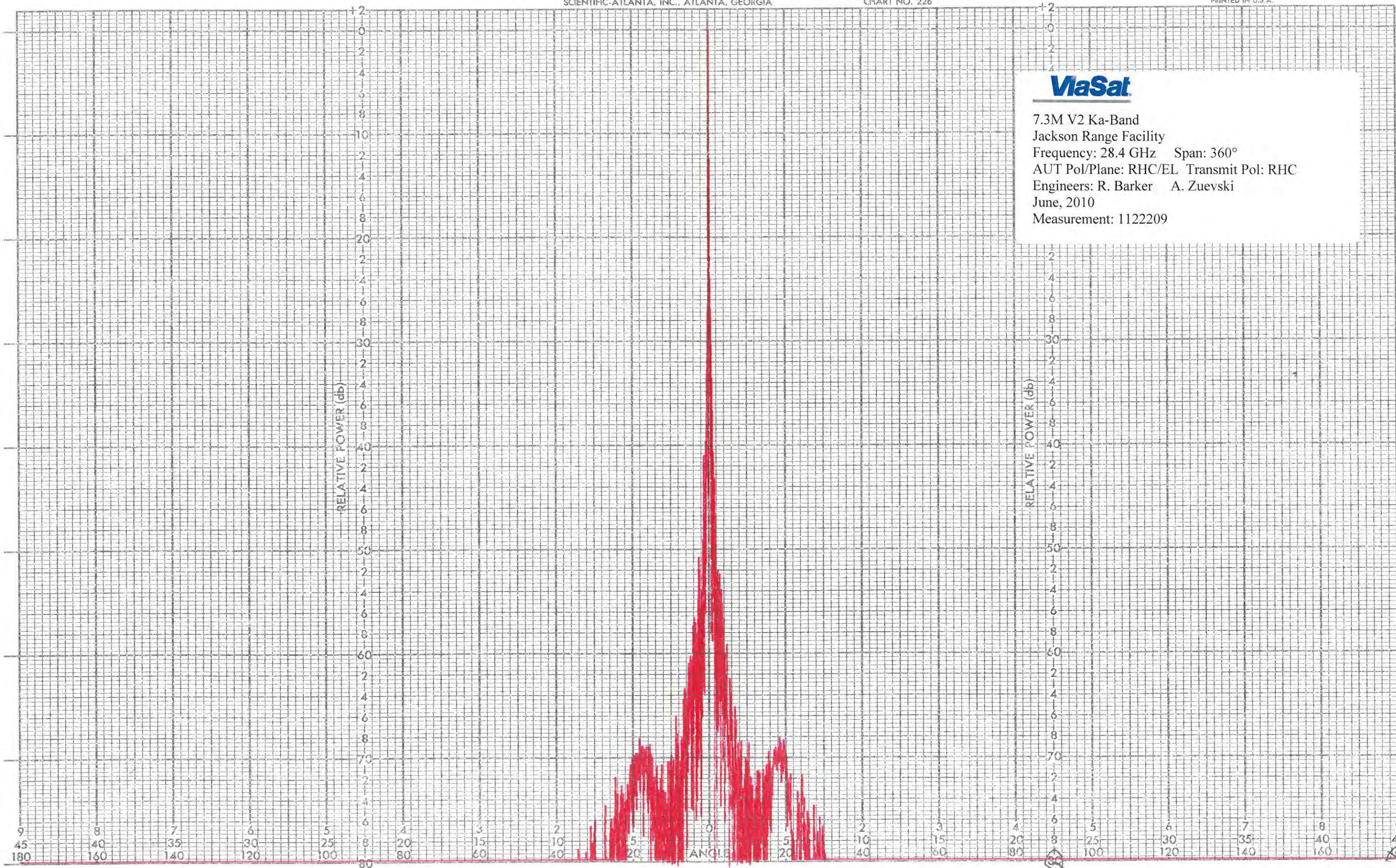
7.3M V2 Ka-Band  
 Jackson Range Facility  
 Frequency: 28.4 GHz Span: 360°  
 AUT Pol/Plane: RHC/EL Transmit Pol: RHC  
 Engineers: R. Barker A. Zuevski  
 June, 2010  
 Measurement: 1122209

112209

DATE

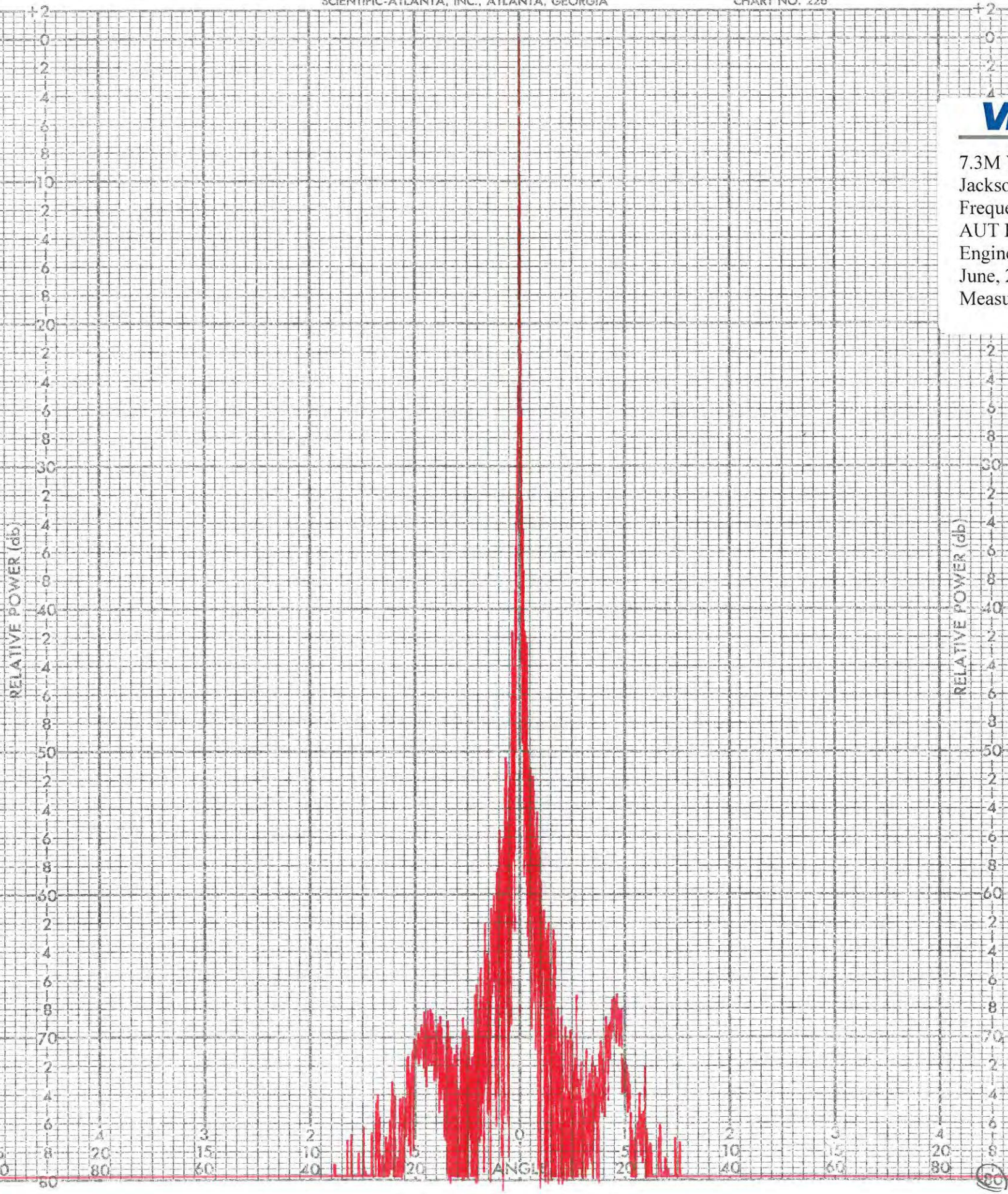
ENGR

PROJECT  
REMARKS



112224

**ViaSat**  
 7.3M V2 Ka-Band  
 Jackson Range Facility  
 Frequency: 29.1 GHz Span: 360°  
 AUT Pol/Plane: RHC/EL Transmit Pol: RHC  
 Engineers: R. Barker A. Zuevski  
 June, 2010  
 Measurement: 112224



DATE

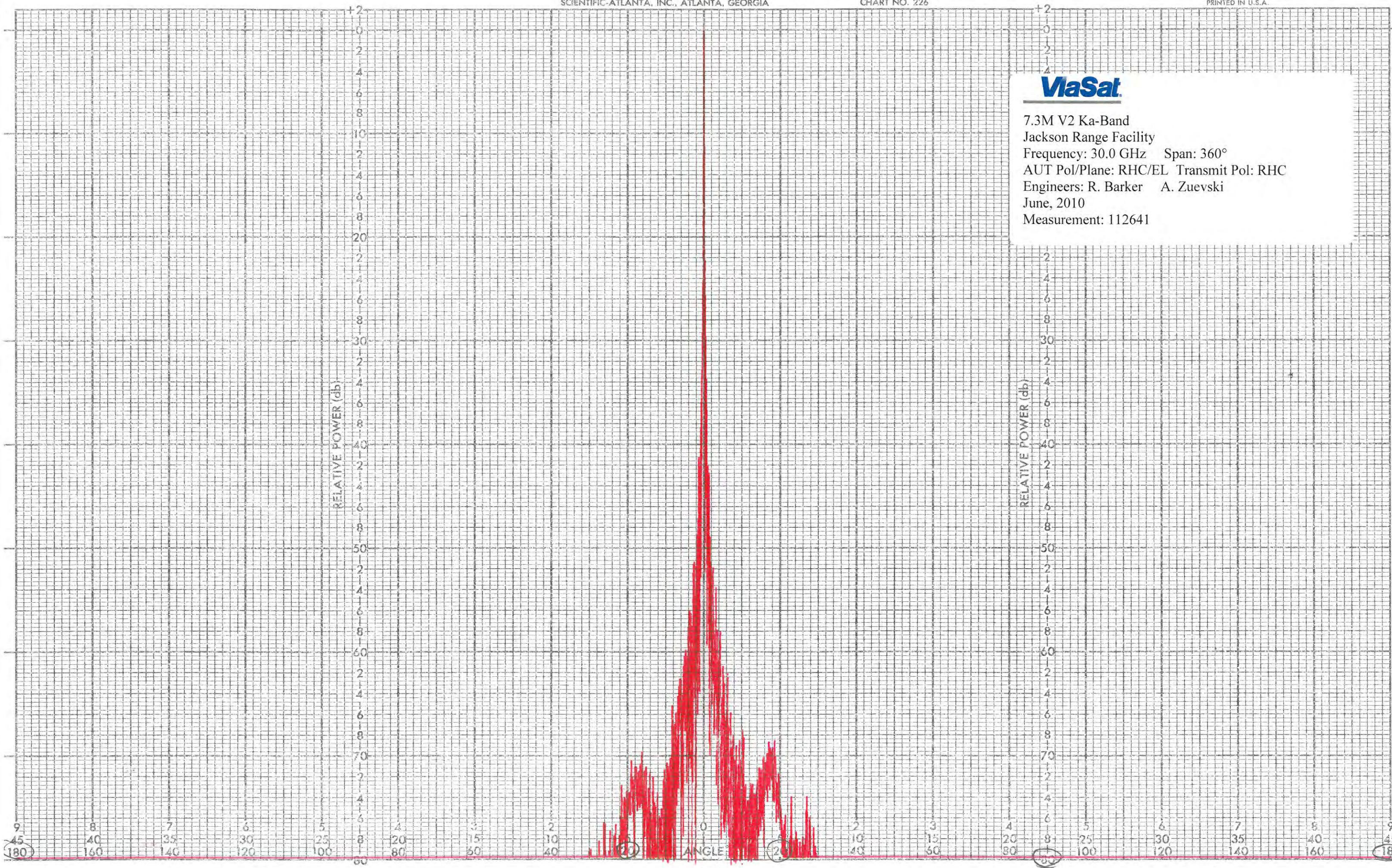
ENGR

PROJECT  
REMARKS





7.3M V2 Ka-Band  
 Jackson Range Facility  
 Frequency: 30.0 GHz Span: 360°  
 AUT Pol/Plane: RHC/EL Transmit Pol: RHC  
 Engineers: R. Barker A. Zuevski  
 June, 2010  
 Measurement: 112641



112641

DATE

ENGR

PROJECT  
REMARKS