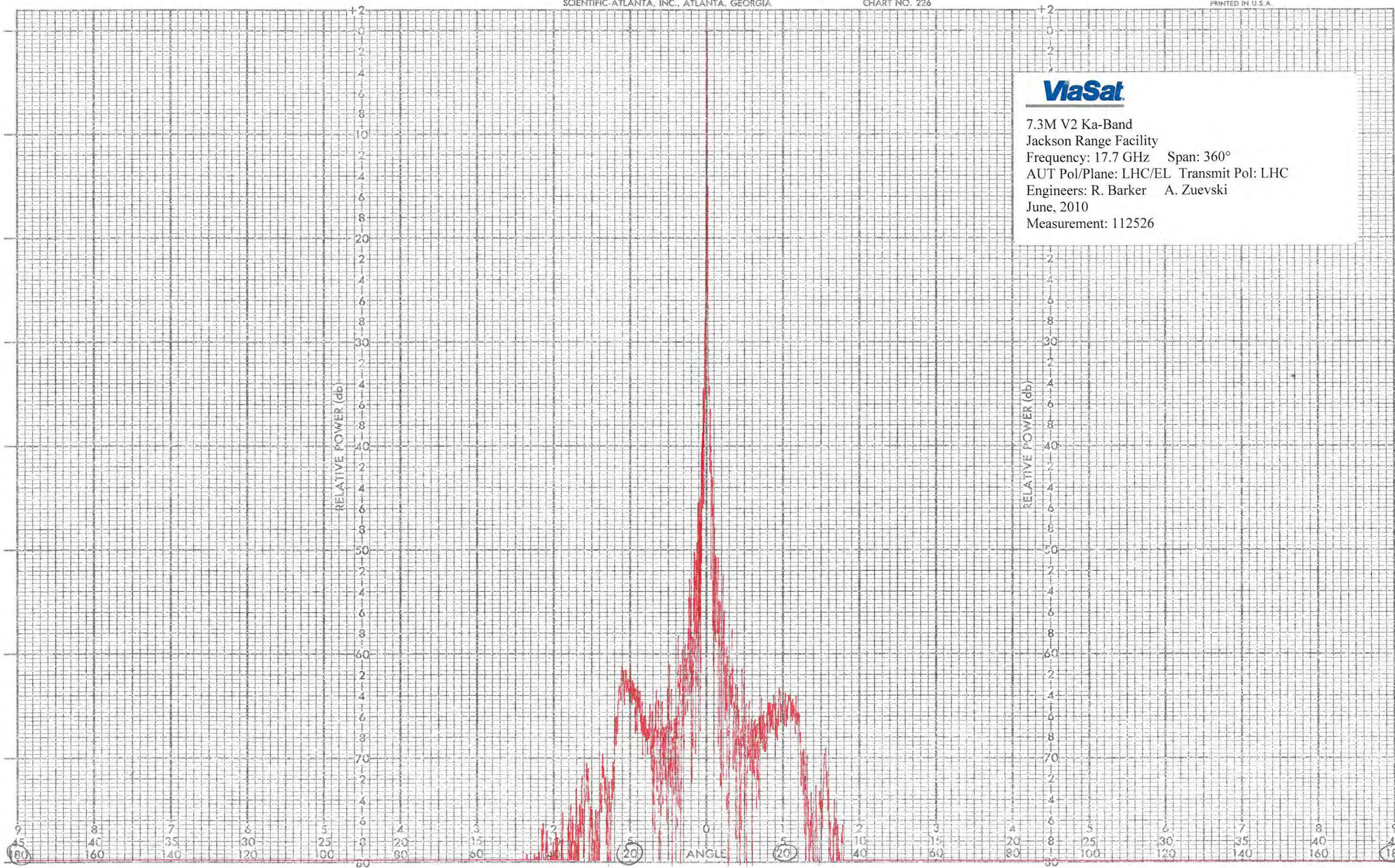


Exhibit C

FCC 25.209 Antenna Gain Performance Plots



7.3M V2 Ka-Band
 Jackson Range Facility
 Frequency: 17.7 GHz Span: 360°
 AUT Pol/Plane: LHC/EL Transmit Pol: LHC
 Engineers: R. Barker A. Zuevski
 June, 2010
 Measurement: 112526



112526

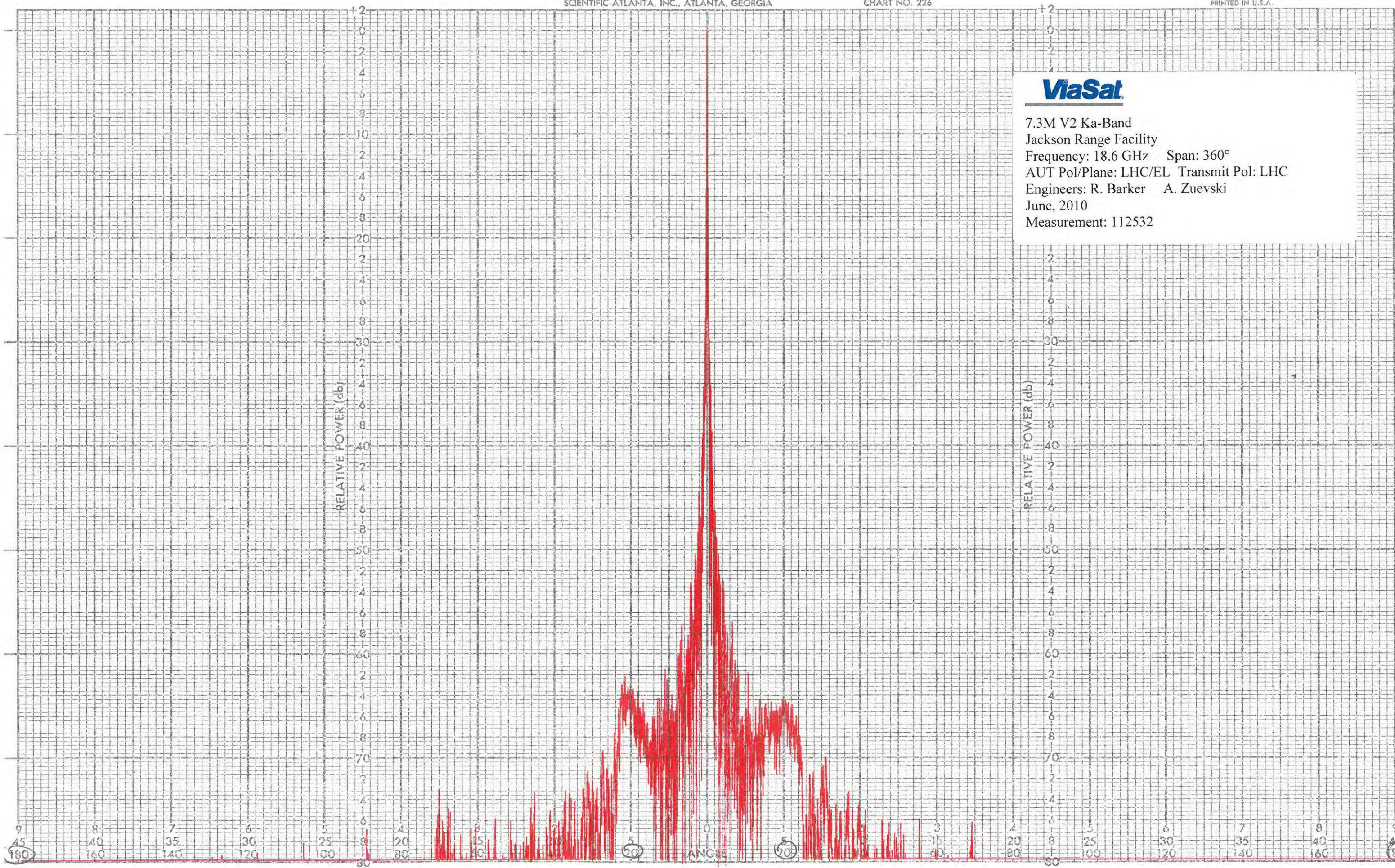
DATE

ENGR

PROJECT
REMARKS



7.3M V2 Ka-Band
 Jackson Range Facility
 Frequency: 18.6 GHz Span: 360°
 AUT Pol/Plane: LHC/EL Transmit Pol: LHC
 Engineers: R. Barker A. Zuevski
 June, 2010
 Measurement: 112532



112532

DATE

ENGR

PROJECT
REMARKS

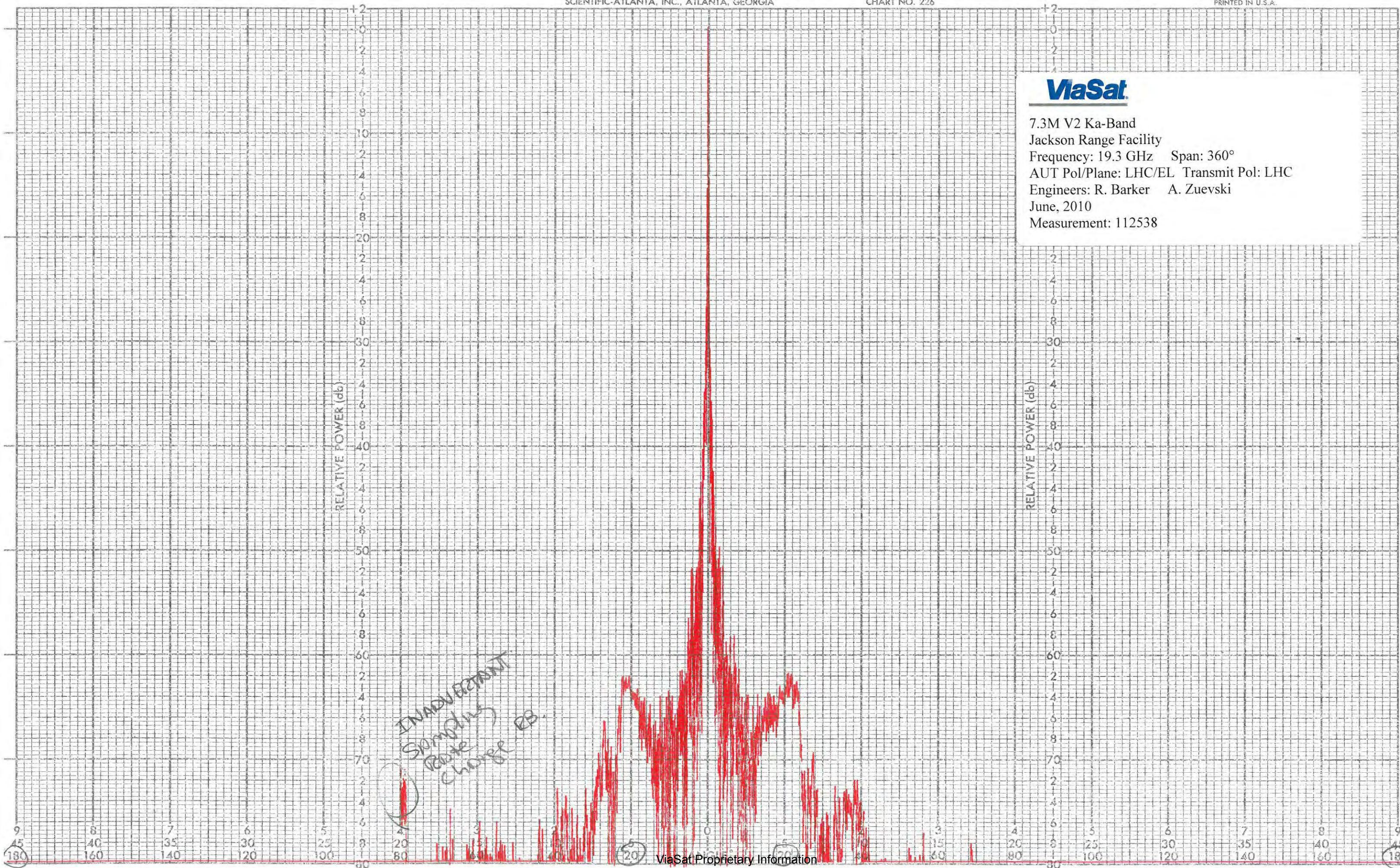


7.3M V2 Ka-Band
 Jackson Range Facility
 Frequency: 19.3 GHz Span: 360°
 AUT Pol/Plane: LHC/EL Transmit Pol: LHC
 Engineers: R. Barker A. Zuevski
 June, 2010
 Measurement: 112538

RELATIVE POWER (db)

RELATIVE POWER (db)

*INADVERTENT
 SPOKE
 (BITE)
 CHOICE EB.*



112538

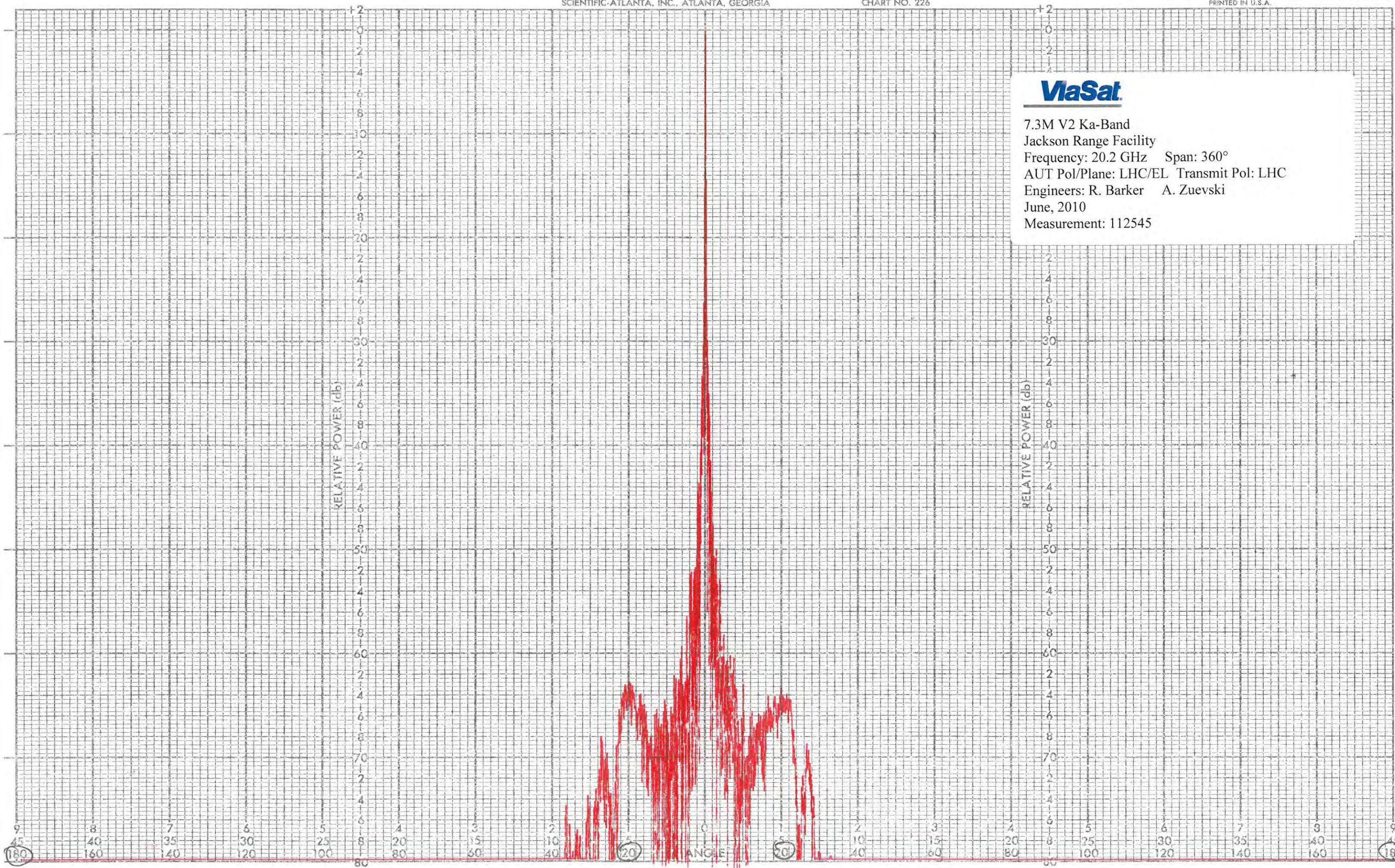
DATE

ENGR

PROJECT
REMARKS

ViaSat

7.3M V2 Ka-Band
Jackson Range Facility
Frequency: 20.2 GHz Span: 360°
AUT Pol/Plane: LHC/EL Transmit Pol: LHC
Engineers: R. Barker A. Zuevski
June, 2010
Measurement: 112545



112545

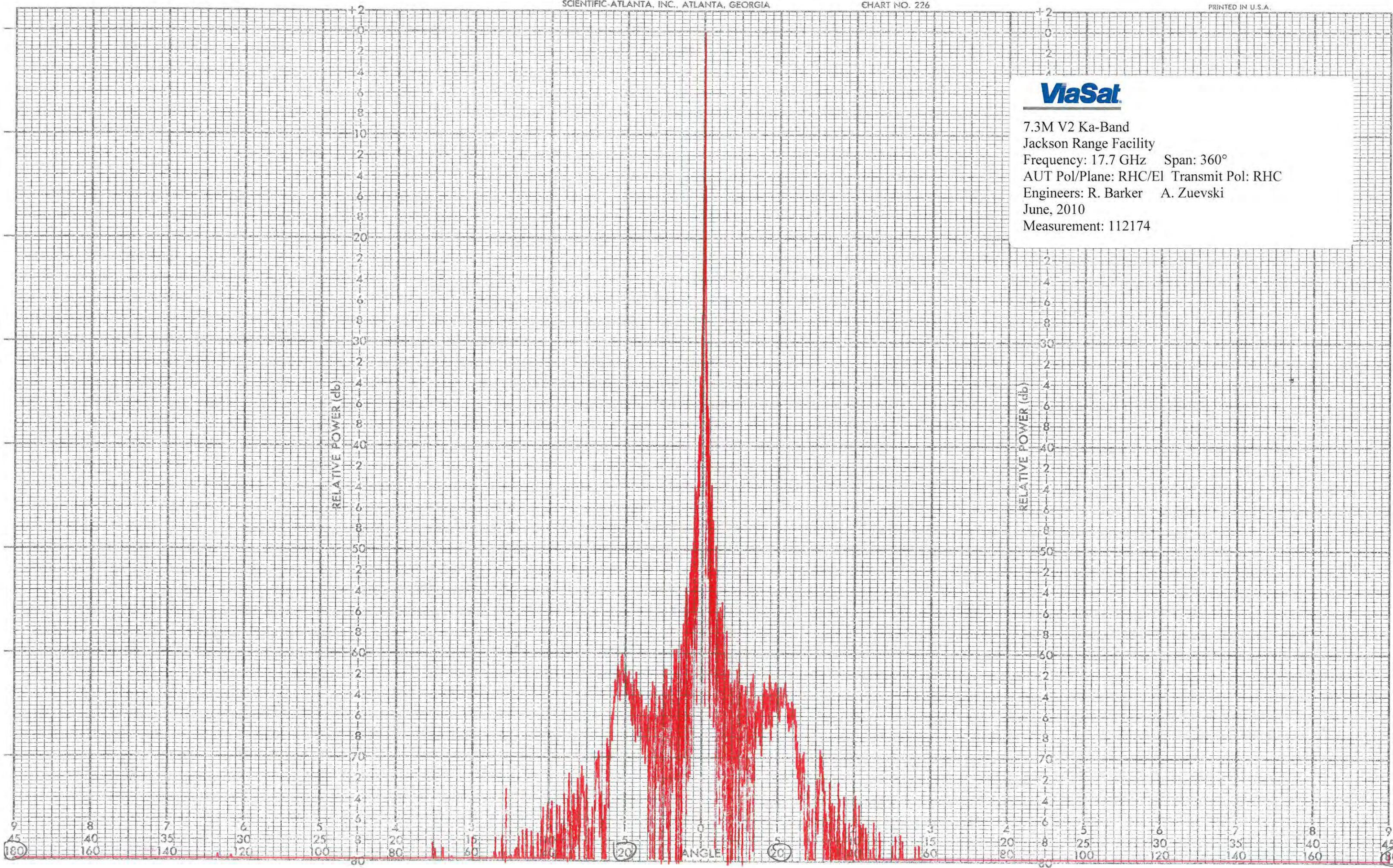
DATE

ENGR

PROJECT
REMARKS



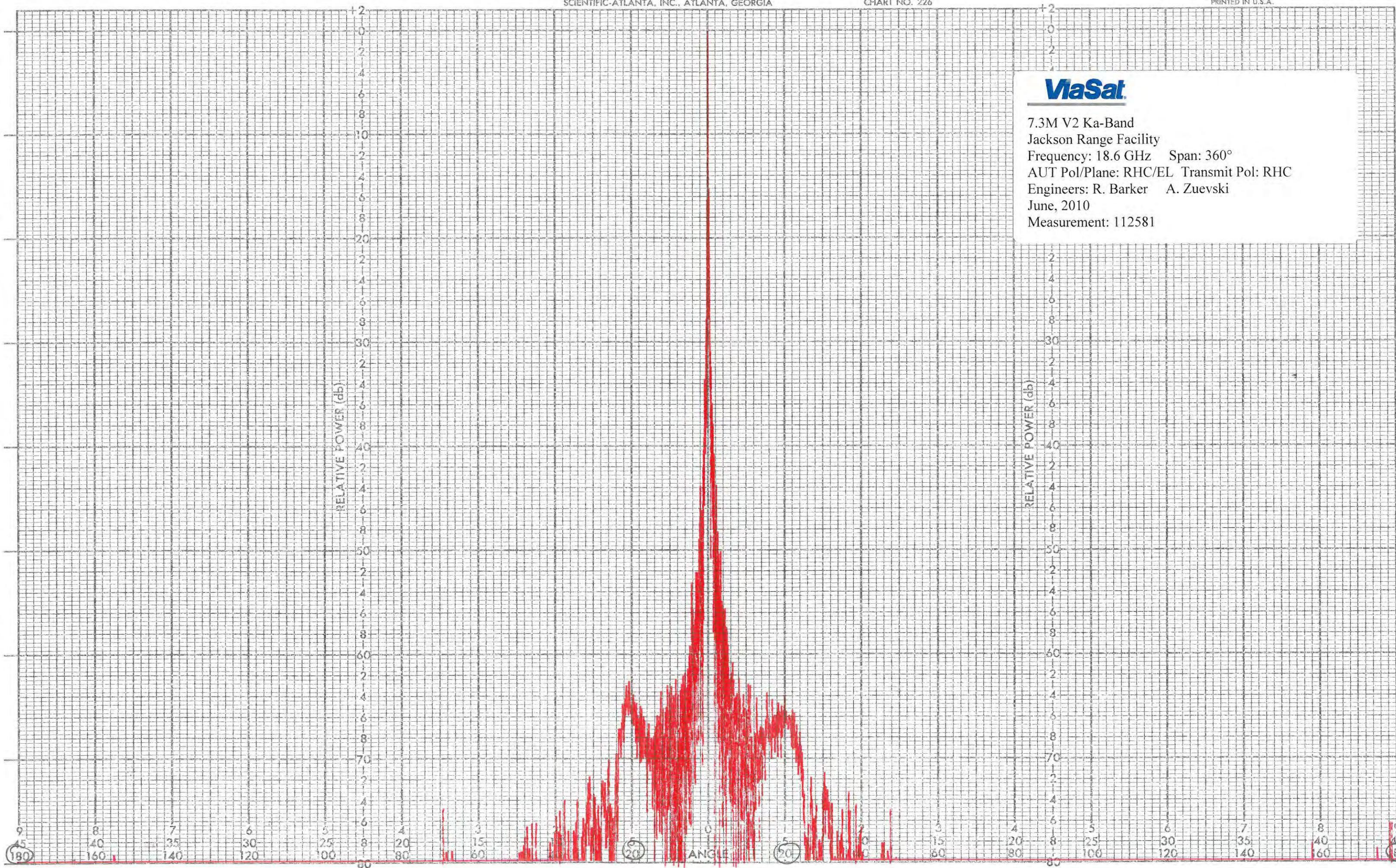
7.3M V2 Ka-Band
 Jackson Range Facility
 Frequency: 17.7 GHz Span: 360°
 AUT Pol/Plane: RHC/El Transmit Pol: RHC
 Engineers: R. Barker A. Zuevski
 June, 2010
 Measurement: 112174



112574
 DATE
 ENGR
 PROJECT
 REMARKS



7.3M V2 Ka-Band
Jackson Range Facility
Frequency: 18.6 GHz Span: 360°
AUT Pol/Plane: RHC/EL Transmit Pol: RHC
Engineers: R. Barker A. Zuevski
June, 2010
Measurement: 112581



112581

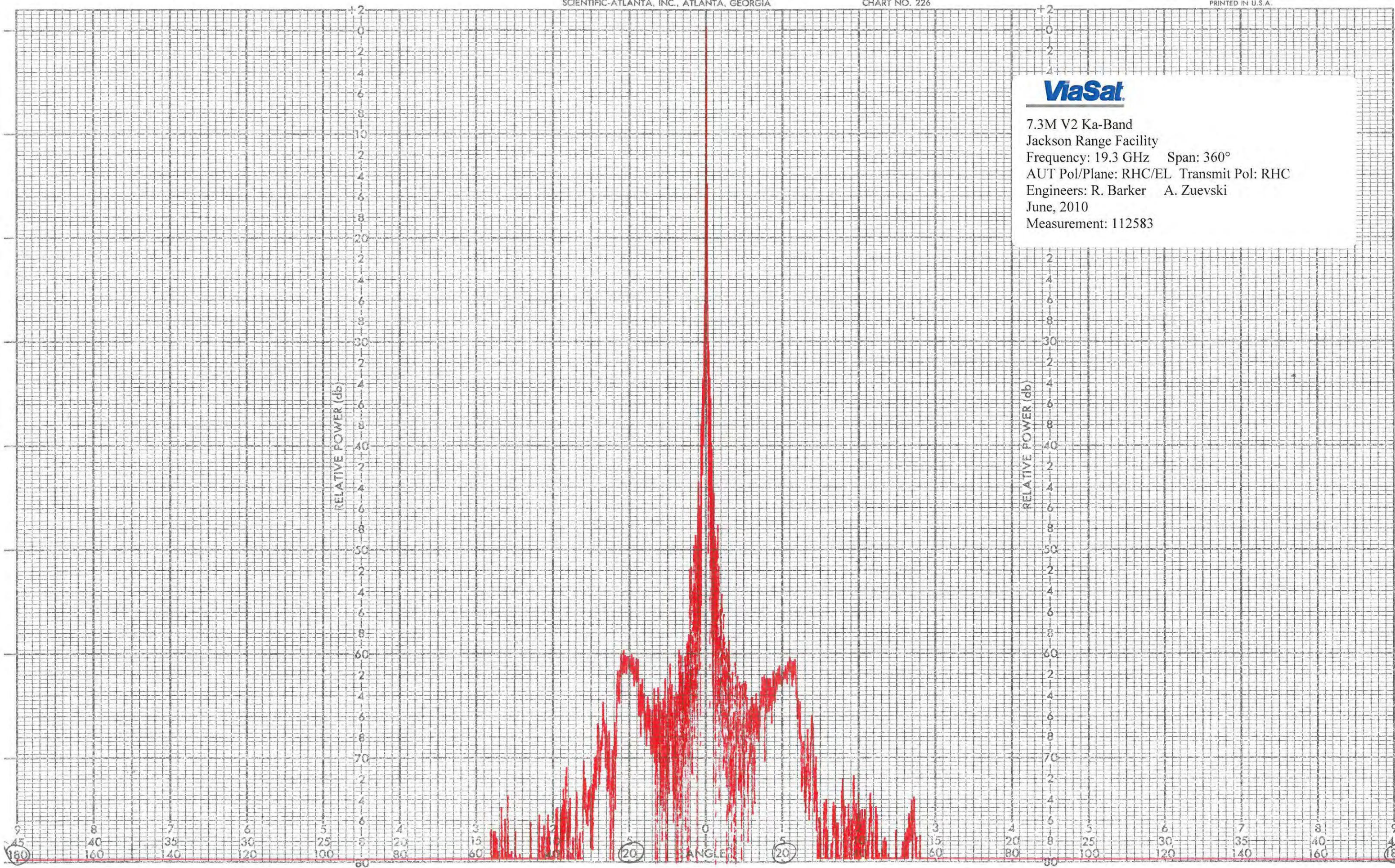
DATE

ENGR

PROJECT
REMARKS



7.3M V2 Ka-Band
 Jackson Range Facility
 Frequency: 19.3 GHz Span: 360°
 AUT Pol/Plane: RHC/EL Transmit Pol: RHC
 Engineers: R. Barker A. Zuevski
 June, 2010
 Measurement: 112583



112583

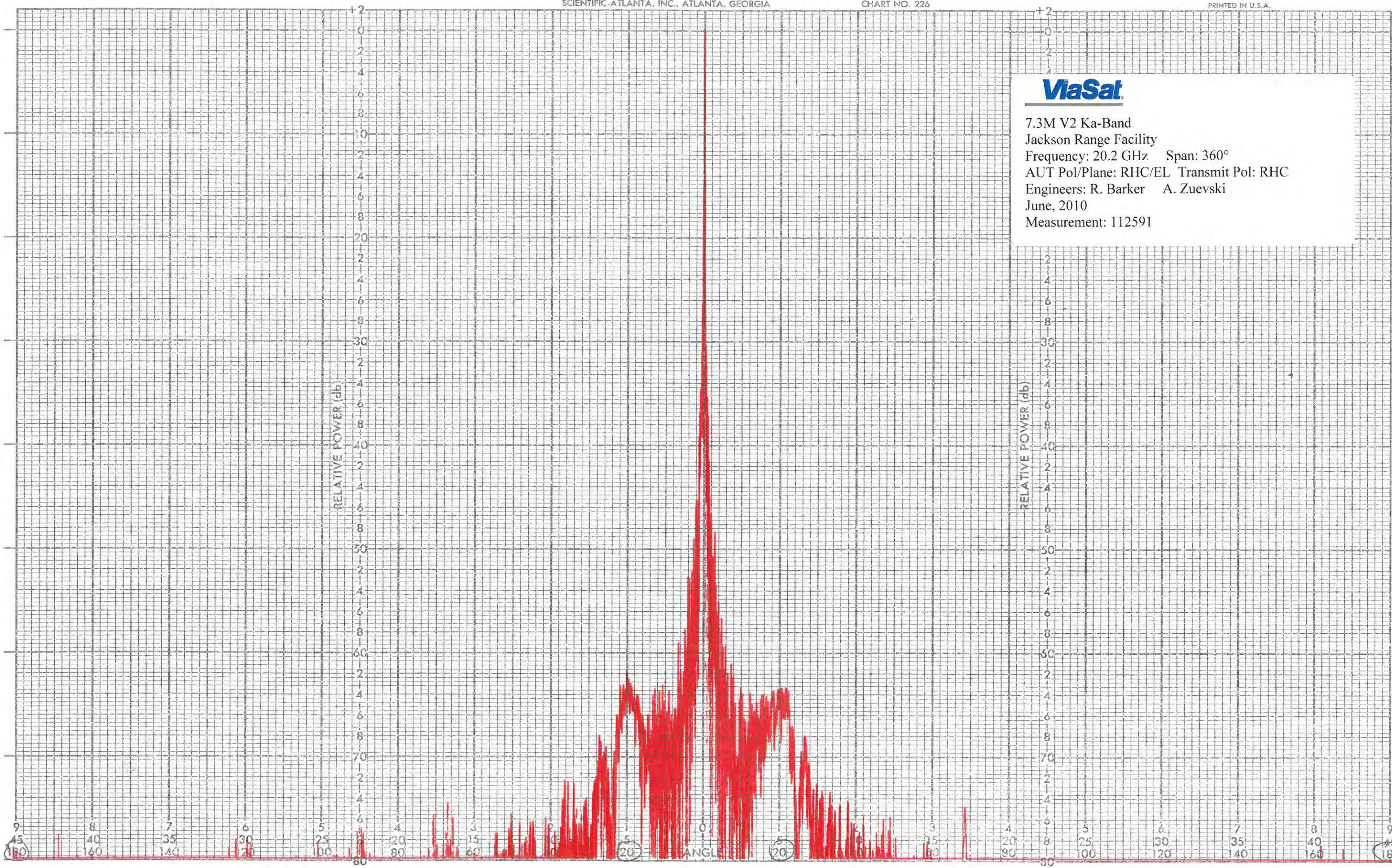
DATE

ENGR

PROJECT
REMARKS



7.3M V2 Ka-Band
 Jackson Range Facility
 Frequency: 20.2 GHz Span: 360°
 AUT Pol/Plane: RHC/EL Transmit Pol: RHC
 Engineers: R. Barker A. Zuevski
 June, 2010
 Measurement: 112591



112591

DATE

ENGR

PROJECT
REMARKS