

File: See Legend

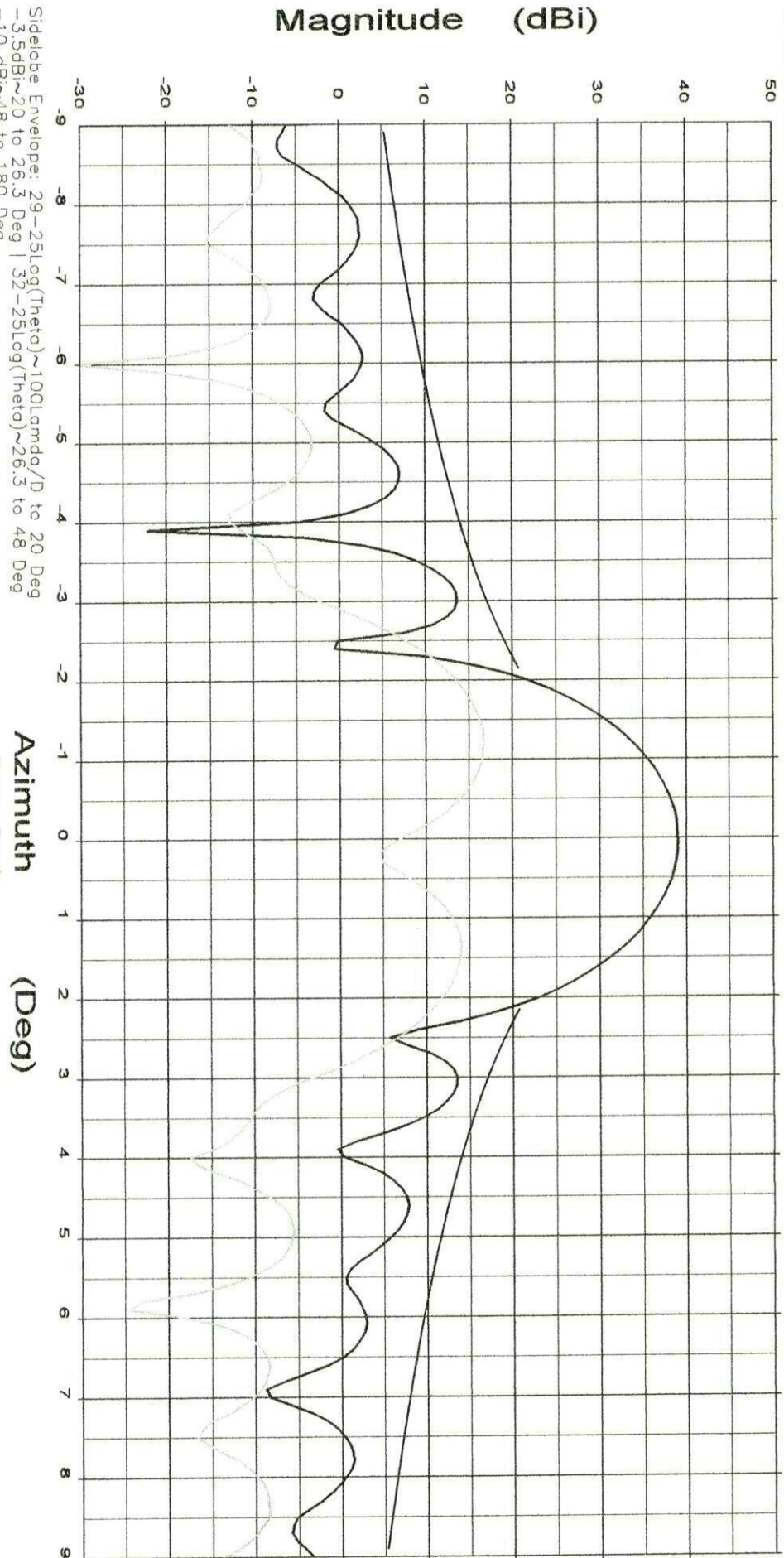
0.98 Meter Series 1981
Ku-Band Receive-Transmit Antenna System

Frequency : 10.950 GHz

Operator: D. Lutz
Ser. no.: 070902
Channel: ch1

Tx pol: Vert.

Rx pol: Vert.



Side-lobe Envelope: 29-25Log(Theta)~100Lamda/D to 20 Deg
 -3.5dBi~20 to 26.3 Deg | 32-25Log(Theta)~26.3 to 48 Deg
 -10 dBi~48 to 180 Deg

Overlays
 108407.dat~ant_under_test — Cal. file
 108407.dat — 108407.dat
 108410.dat~ant_under_test — 108410.dat

units
 dBi
 dBi

Azimuth (Deg)

Beam Peak
 Deg 0.02
 dB 39.04

File: See Legend

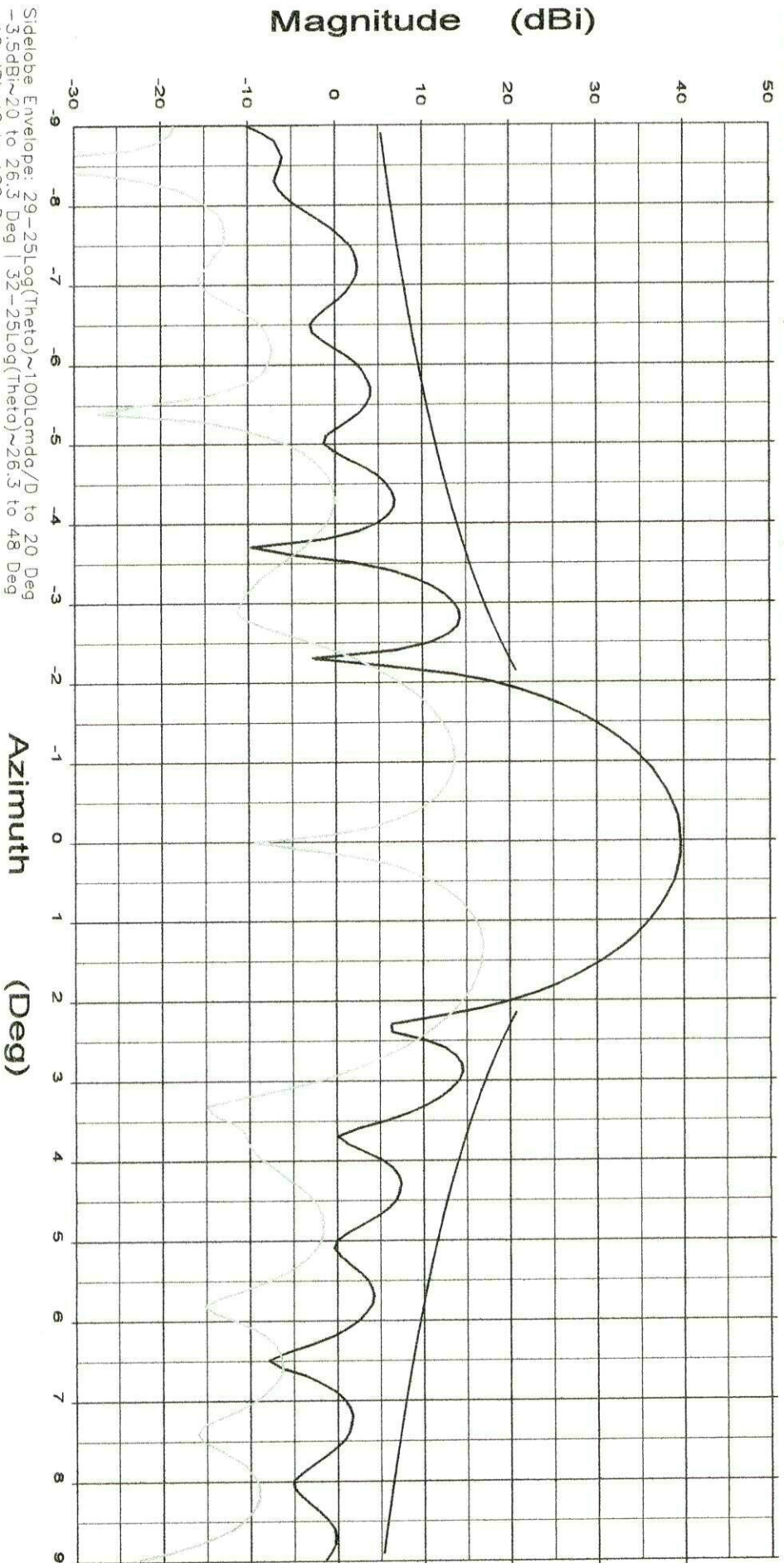
0.98 Meter Series 1981
Ku-Band Receive-Transmit Antenna System

Frequency : 11.700 GHz

Operator: D. Lutz
Ser. no.: 070902
Channel: ch1

Tx pol: Vert.

Rx pol: Vert.



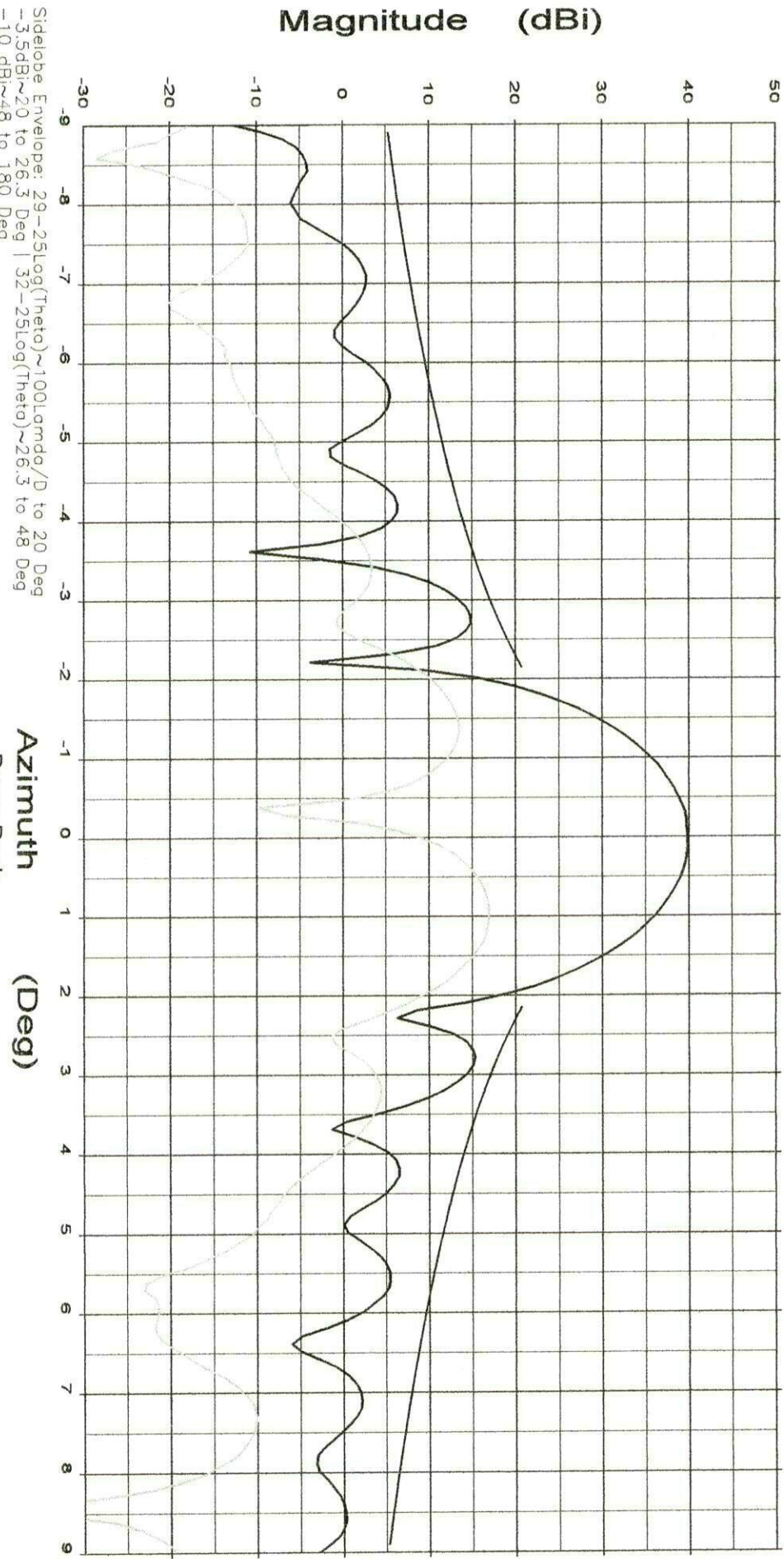
File: See Legend

0.98 Meter Series 1981
Ku-Band Receive-Transmit Antenna System

Frequency : 11.950 GHz

Operator: D. Lutz
Ser. no.: 070902
Channel: ch1

Tx pol: Vert. Rx pol: Vert.



Overlays

108407.dat-ant_under_test	—	Cal. file	108407.dat	units	dB
108410.dat-ant_under_test	---	108410.dat			dB

Azimuth

Beam Peak	deg	dB
0.02	39.89	
0.97	48.95	

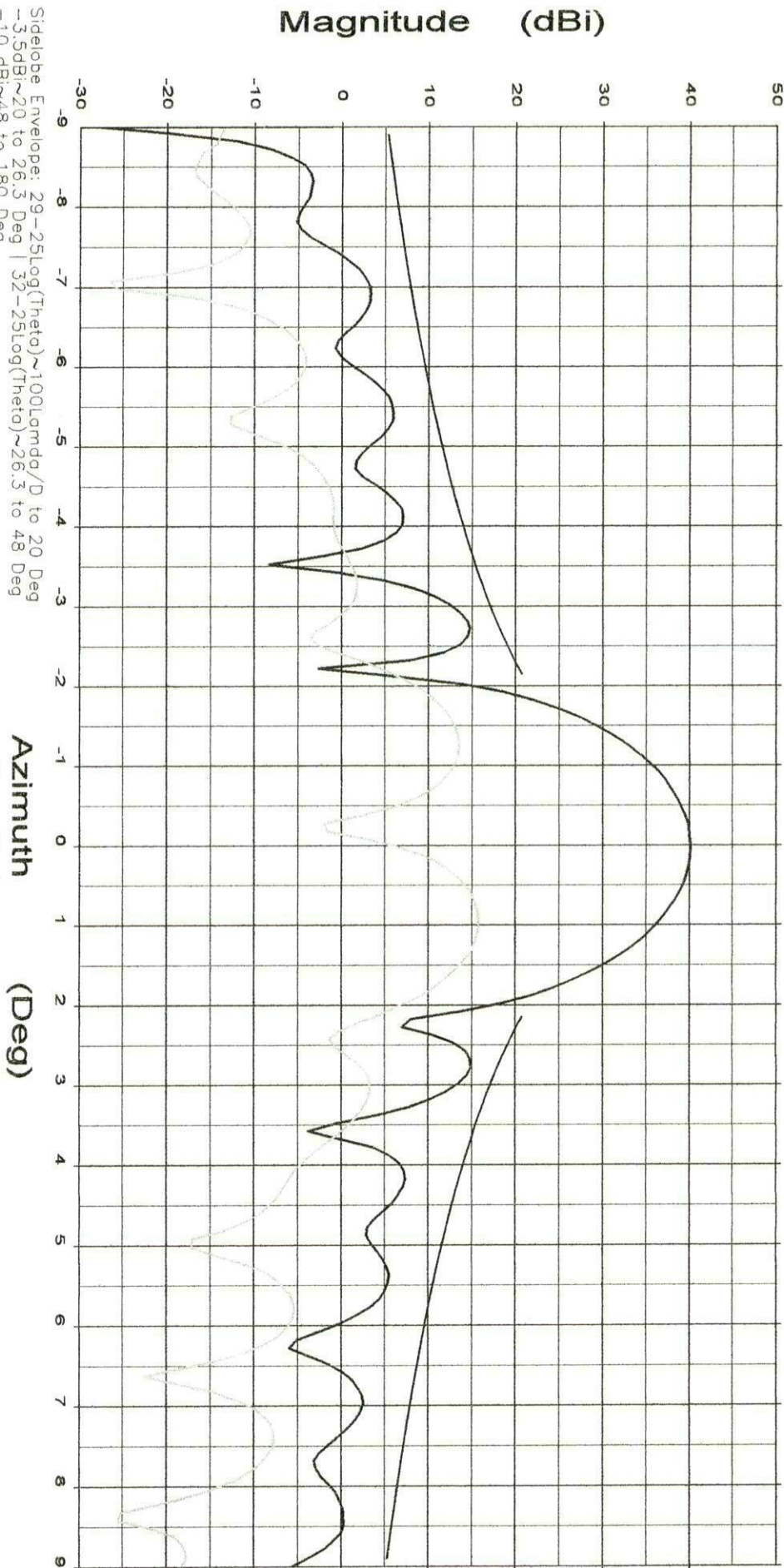
File: See Legend

0.98 Meter Series 1981
Ku-Band Receive-Transmit Antenna System

Frequency : 12.200 GHz

Operator: D. Lutz
Ser. no.: 070902
Channel: ch1

Tx pol: Vert. Rx pol: Vert.



Overlays

108407.dat-ant_under_test	—	Cal. file	108407.dat	units	dB
108410.dat-ant_under_test	- - -	108410.dat		dB	15.74

Azimuth	Beam Peak
Deg	dB
0.02	40.10
0.97	15.74

File: See Legend

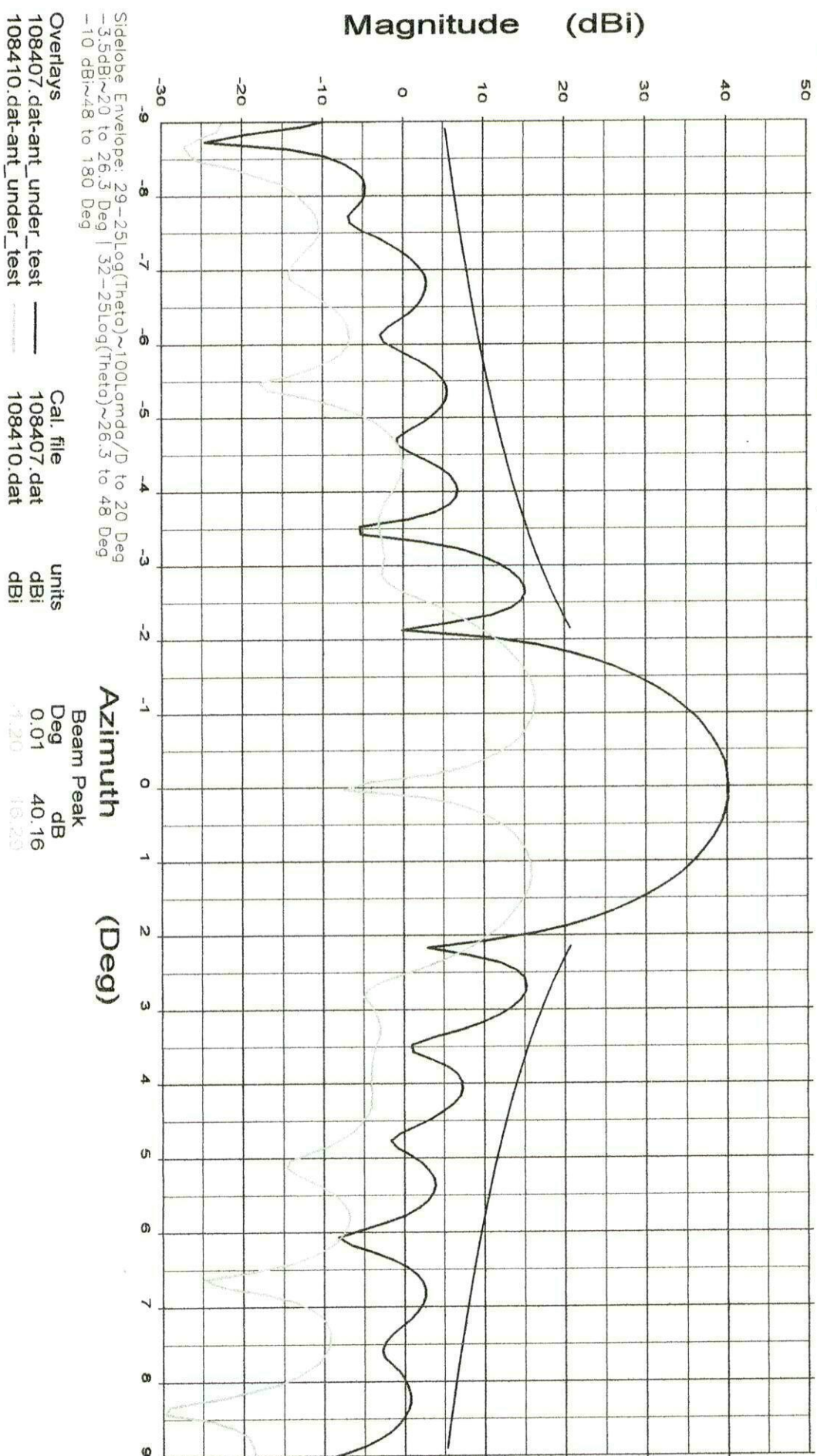
0.98 Meter Series 1981
Ku-Band Receive-Transmit Antenna System

Frequency : 12.450 GHz

Operator: D. Lutz
Ser. no.: 070902
Channel: ch1

Tx pol: Vert.

Rx pol: Vert.



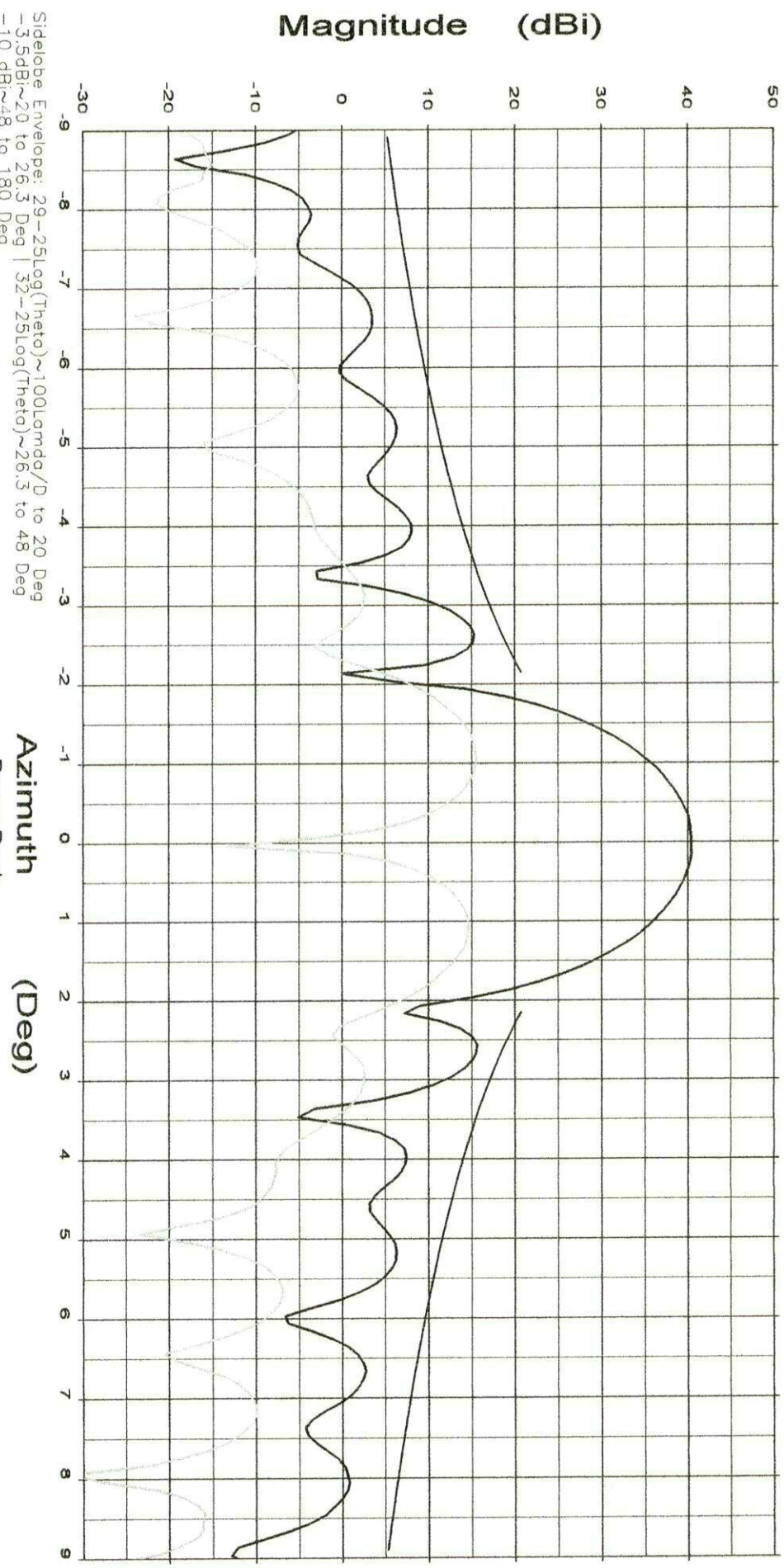
File: See Legend

0.98 Meter Series 1981
Ku-Band Receive-Transmit Antenna System

Frequency : 12.750 GHz

Operator: D. Lutz
Ser. no.: 070902
Channel: ch1

Tx pol: Vert. Rx pol: Vert.



File: See Legend

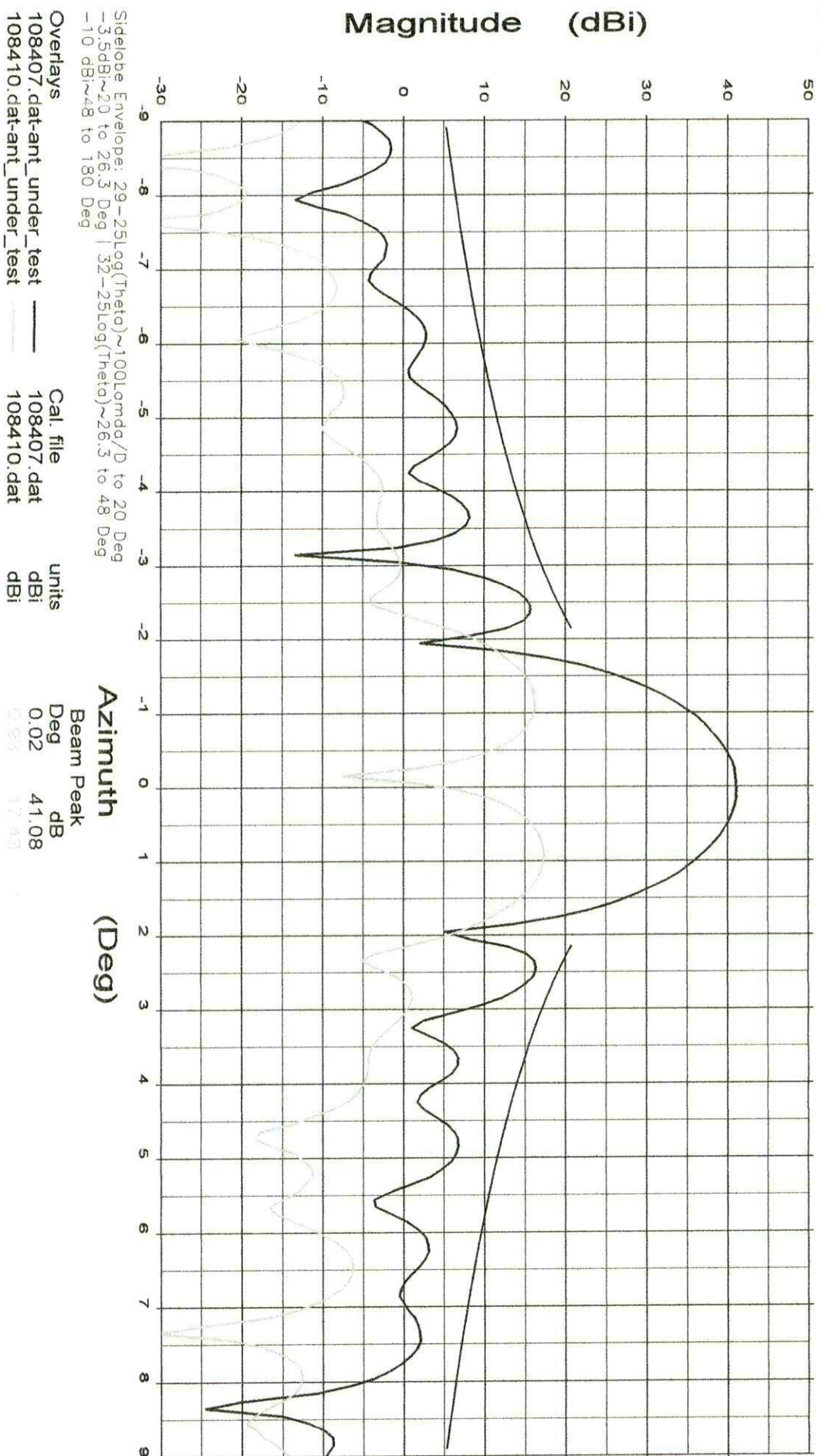
0.98 Meter Series 1981
Ku-Band Receive-Transmit Antenna System

Frequency : 13.750 GHz

Operator: D. Lutz
Ser. no.: 070902
Channel: ch1

Tx pol: Vert.

Rx pol: Vert.



File: See Legend

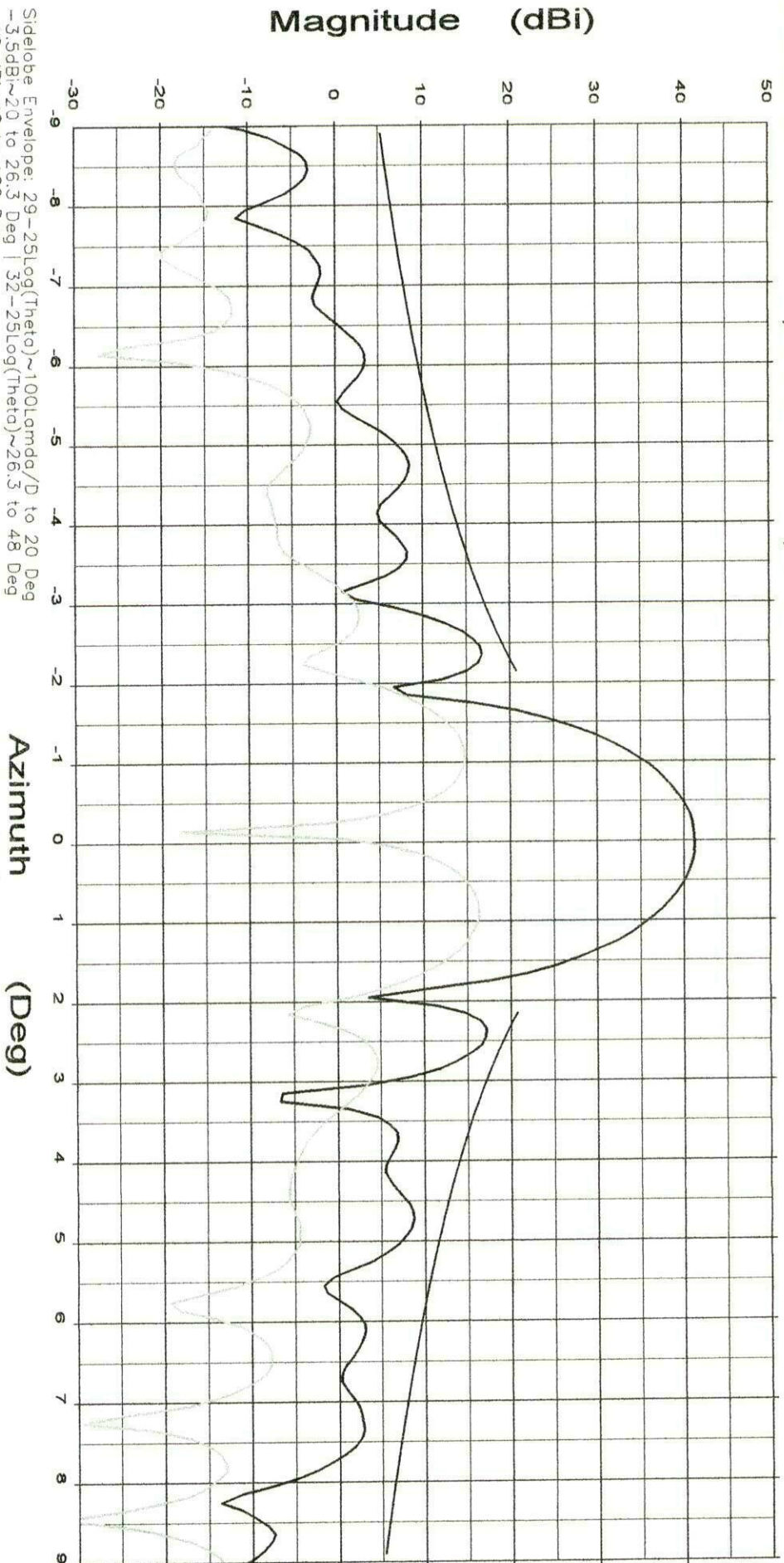
0.98 Meter Series 1981
Ku-Band Receive-Transmit Antenna System

Frequency : 14.000 GHz

Operator: D. Lutz
Ser. no.: 070902
Channel: ch1

Tx pol: Vert.

Rx pol: Vert.



Sidelobe Envelope: 29-25Log(Theta)~100Lamda/D to 20 Deg
 -3.5dBi~20 to 26.3 Deg | 32-25Log(Theta)~26.3 to 48 Deg
 -10 dBi~48 to 180 Deg

Overlays
 108407.dat~ant_under_test ——— Cal. file 108407.dat units dB
 108410.dat~ant_under_test - - - - - 108410.dat units dBi

Azimuth
 Beam Peak
 Deg 0.02 41.29
 dB 0.98 18.25

File: See Legend

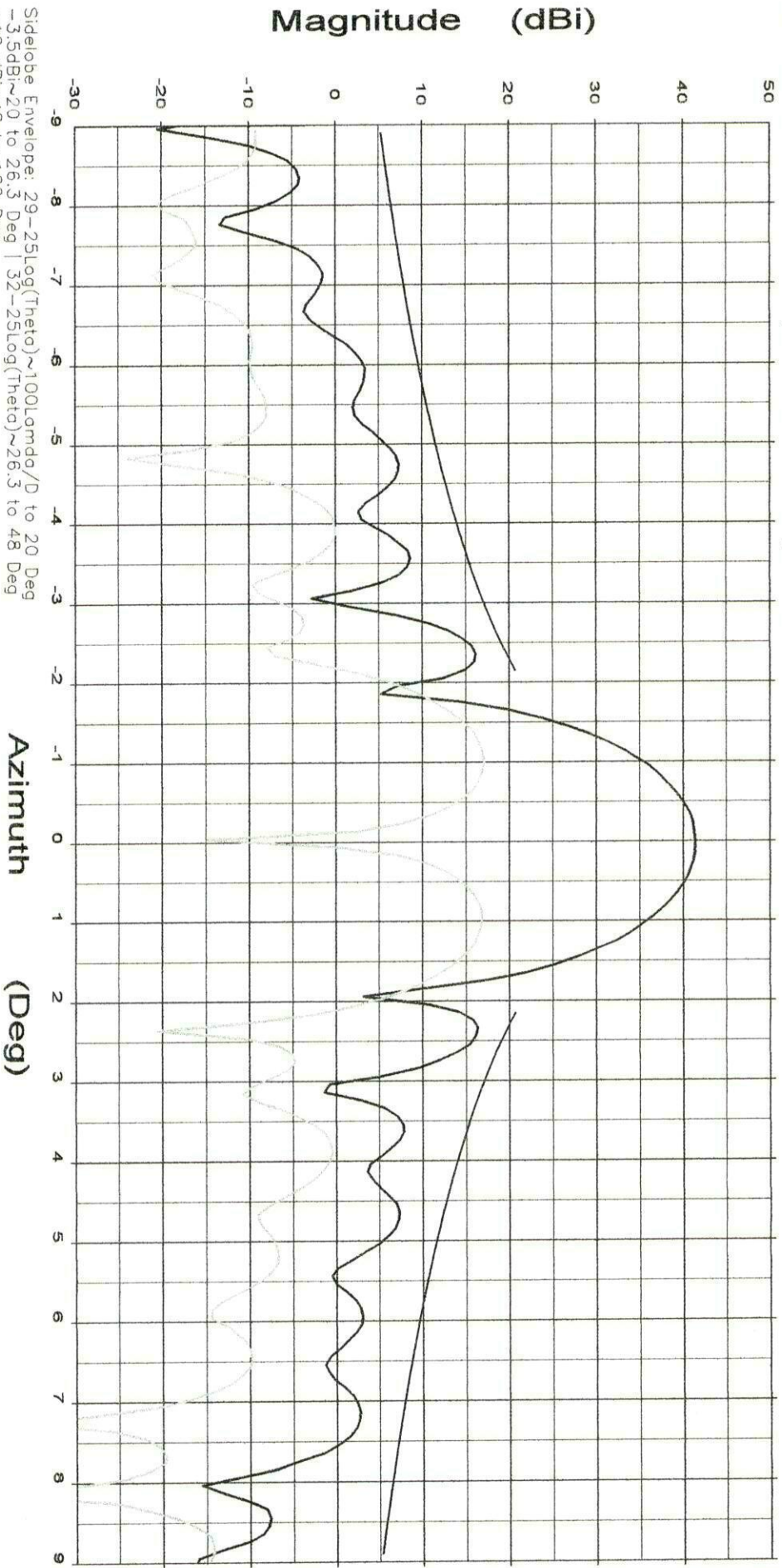
0.98 Meter Series 1981
Ku-Band Receive-Transmit Antenna System

Frequency : 14.250 GHz

Operator: D. Lutz
Ser. no.: 070902
Channel: ch1

Tx pol: Vert.

Rx pol: Vert.



Overlays
108407.dat-ant_under_test
108410.dat-ant_under_test

Cal. file
108407.dat
108410.dat

units
dB
dB

Beam Peak
Deg
0.03
41.04 47.00

File: See Legend

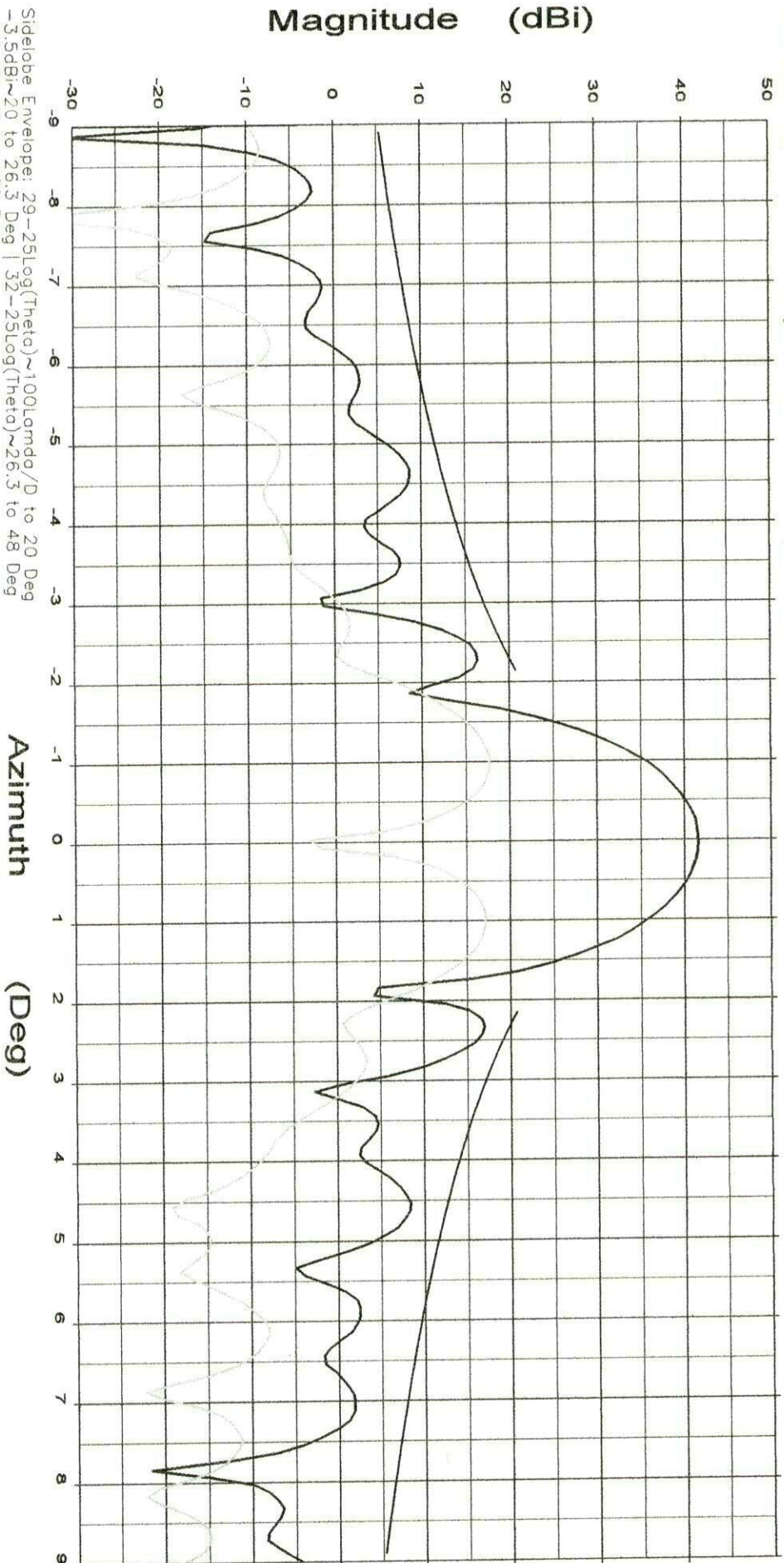
0.98 Meter Series 1981
Ku-Band Receive-Transmit Antenna System

Frequency : 14.500 GHz

Operator: D. Lutz
Ser. no.: 070902
Channel: ch1

Tx pol: Vert.

Rx pol: Vert.



Overlays
 108407.dat~ant_under_test
 108410.dat~ant_under_test

Cal. file
 108407.dat
 108410.dat

units
 dBi
 dBi

Azimuth (Deg)
 Beam Peak
 Deg 0.02
 dB 41.59
 17.55

Sidelobe Envelope: 29-25Log(Theta)~100Lamda/D to 20 Deg
 -3.5dBi~20 to 26.3 Deg | 32-25Log(Theta)~26.3 to 48 Deg
 -10 dBi~48 to 180 Deg

File: See Legend

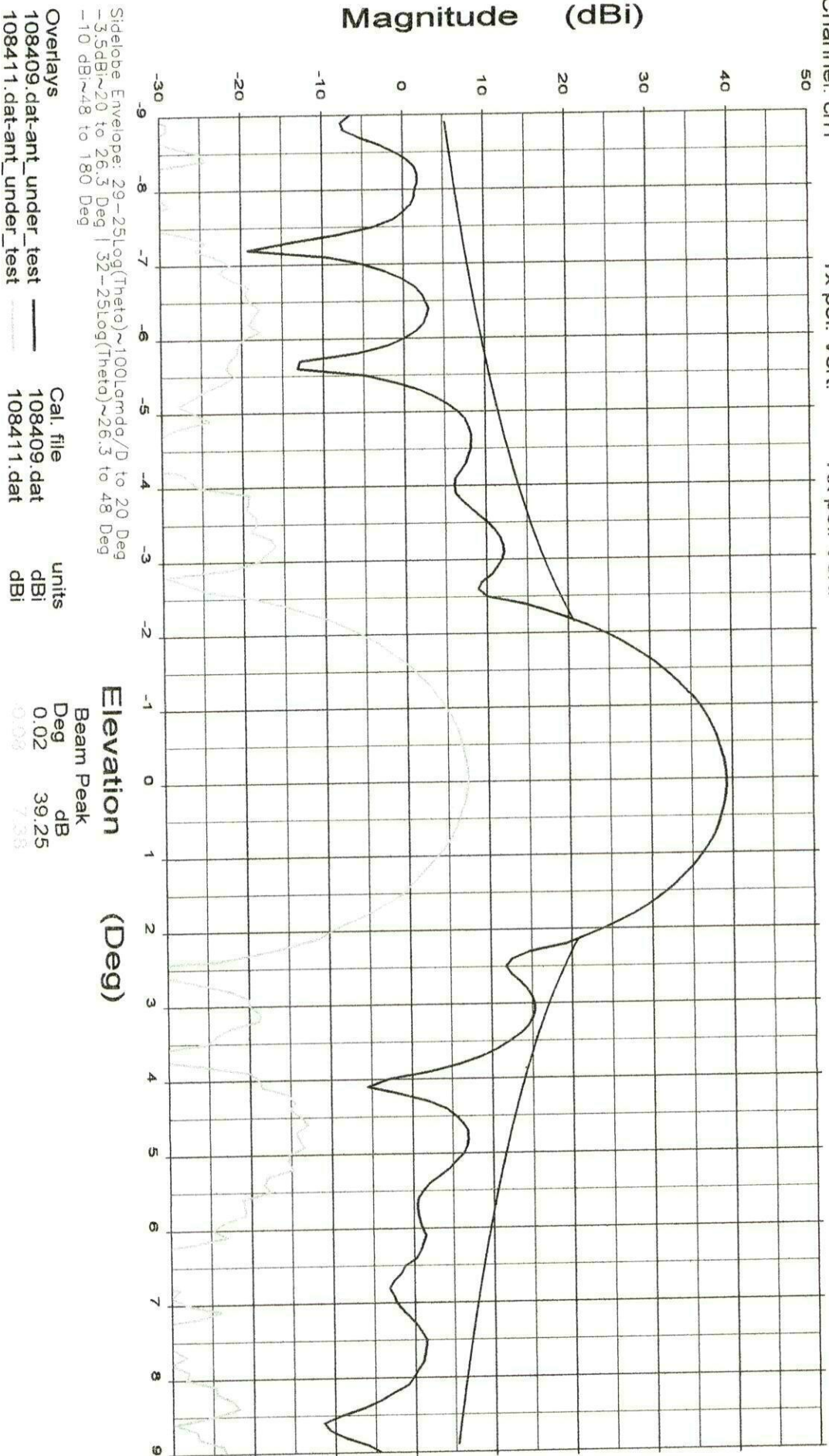
0.98 Meter Series 1981
Ku-Band Receive-Transmit Antenna System

Frequency : 10.950 GHz

Operator: D. Lutz
Ser. no.: 070902
Channel: ch1

Tx pol: Vert.

Rx pol: Vert.



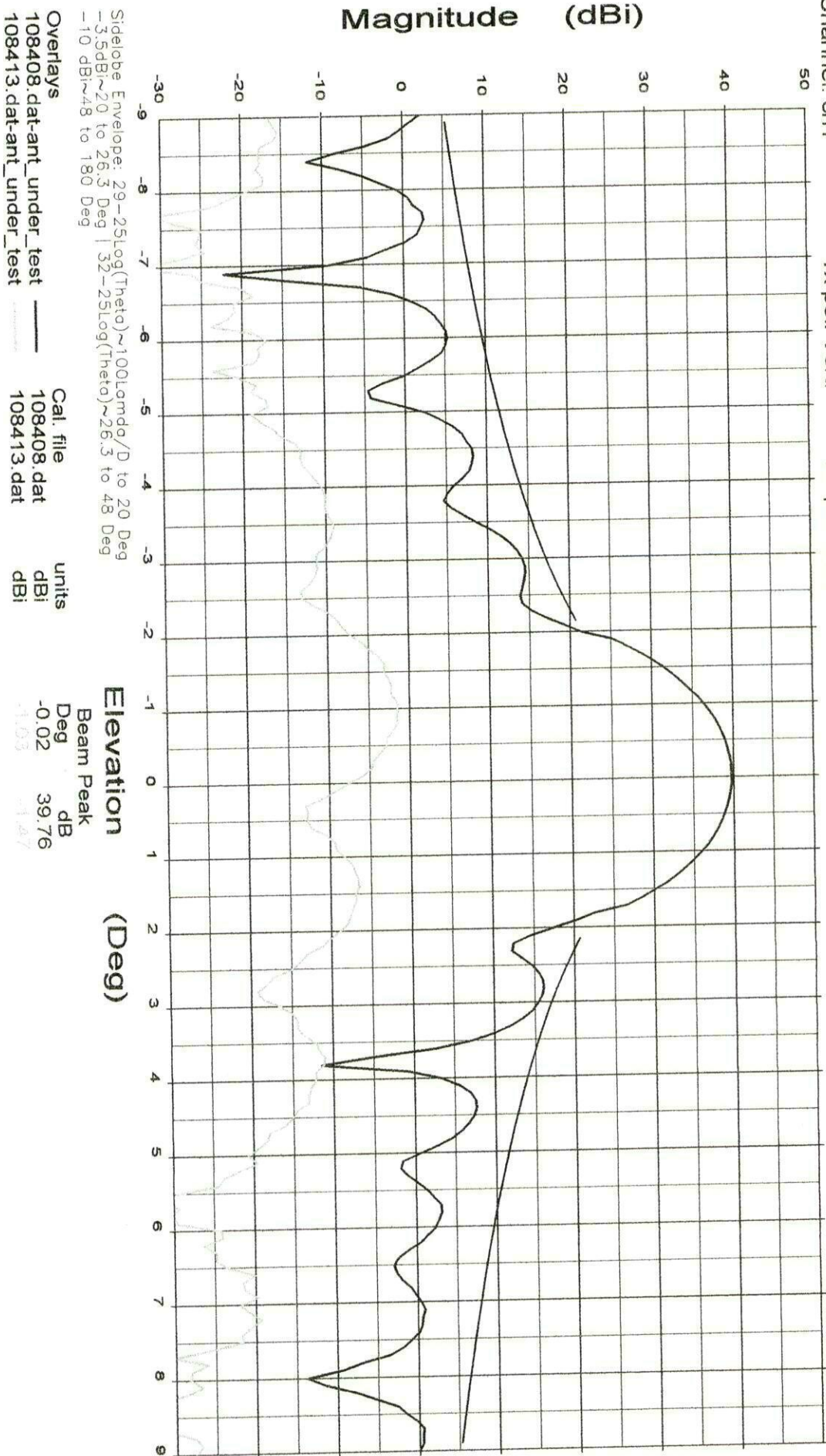
File: See Legend

0.98 Meter Series 1981
Ku-Band Receiver-Transmit Antenna System

Frequency : 11.700 GHz

Operator: D. Lutz
Ser. no.: 070902
Channel: ch1

Tx pol: Vert. Rx pol: Vert.



File: See Legend

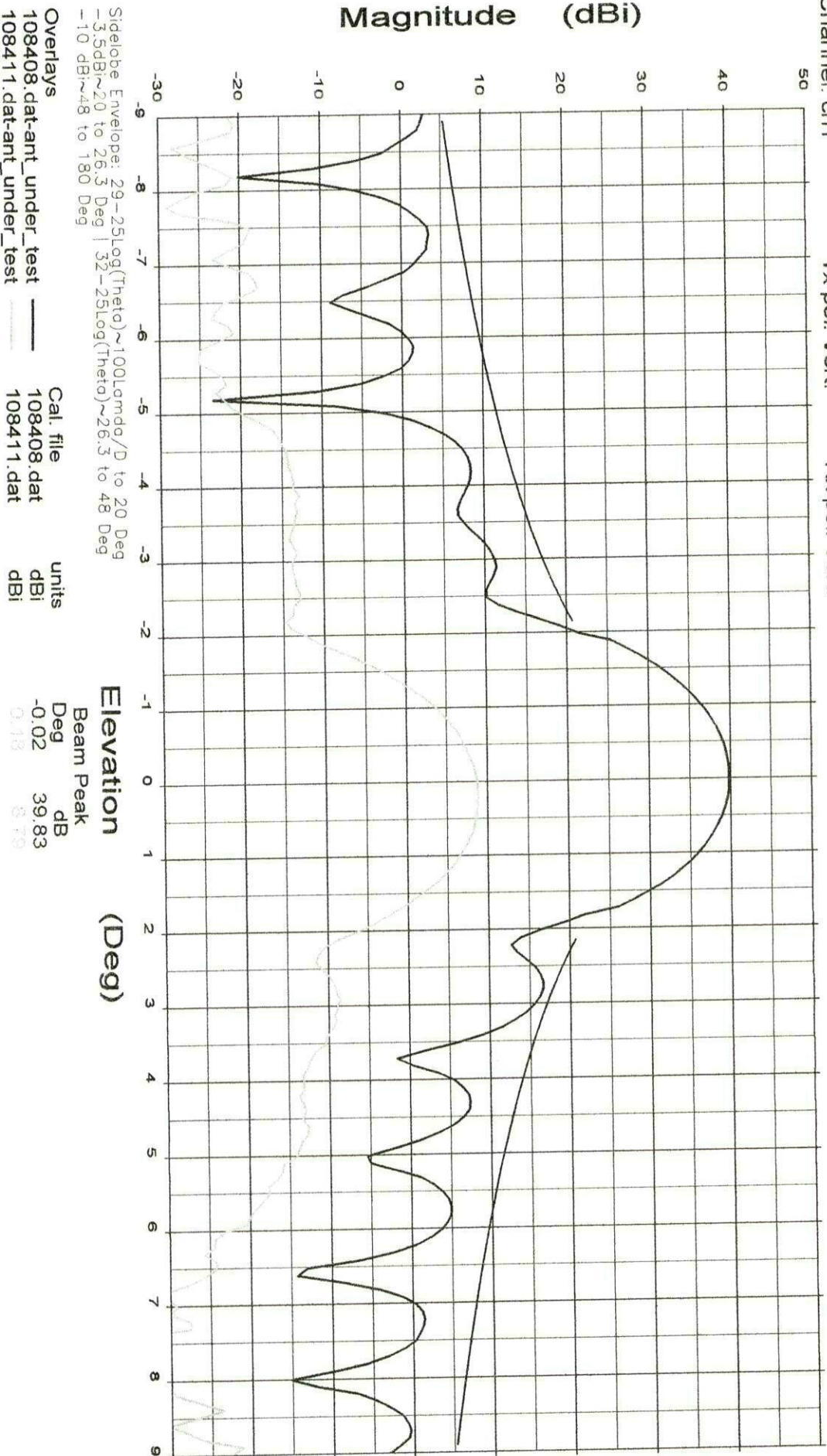
0.98 Meter Series 1981
Ku-Band Receive-Transmit Antenna System

Frequency : 11.950 GHz

Operator: D. Lutz
Ser. no.: 070902
Channel: ch1

Tx pol: Vert.

Rx pol: Vert.



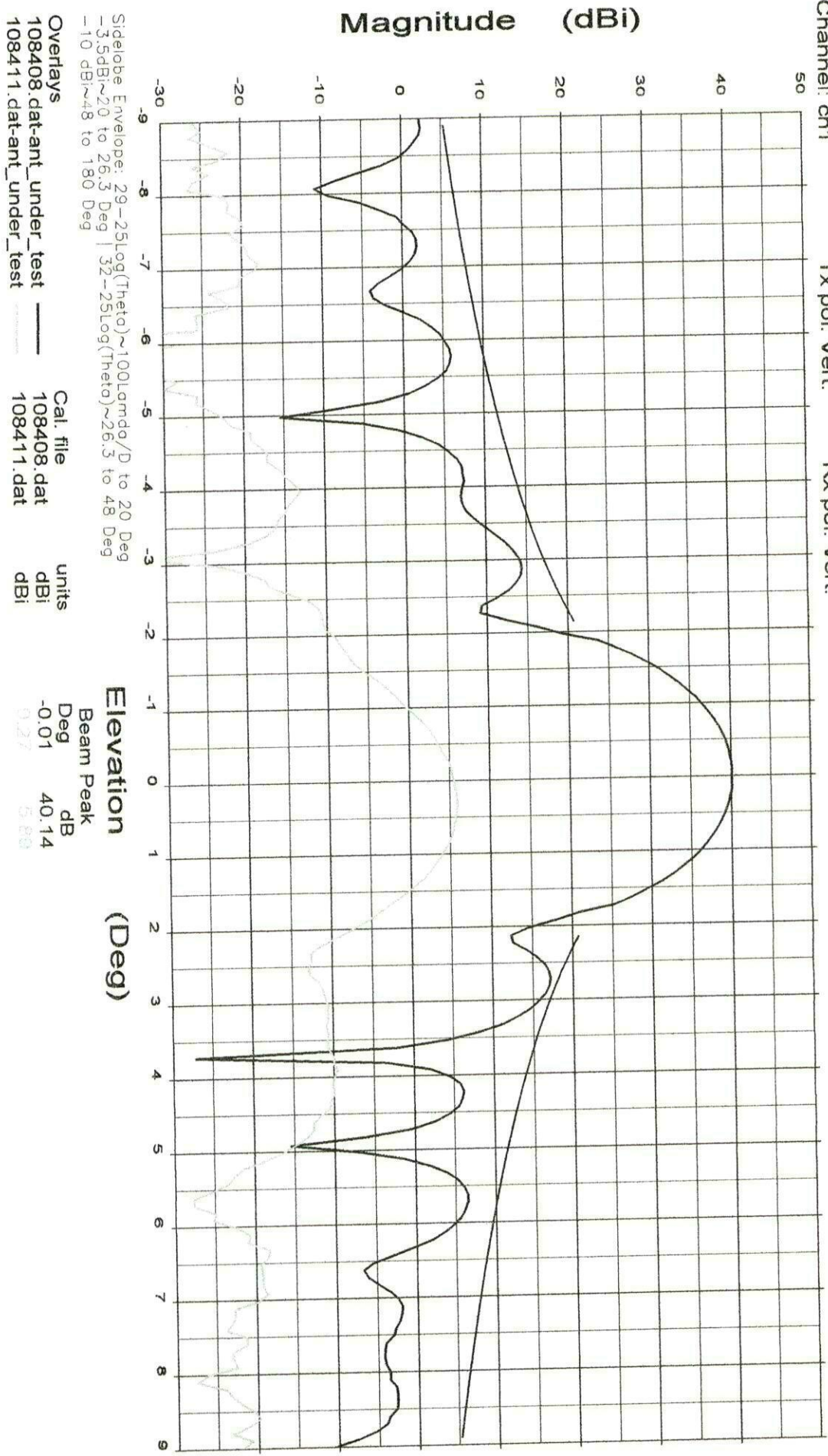
File: See Legend

0.98 Meter Series 1981
Ku-Band Receiver-Transmit Antenna System

Frequency : 12.200 GHz

Operator: D. Lutz
Ser. no.: 070902
Channel: ch1

Tx pol: Vert. Rx pol: Vert.



File: See Legend

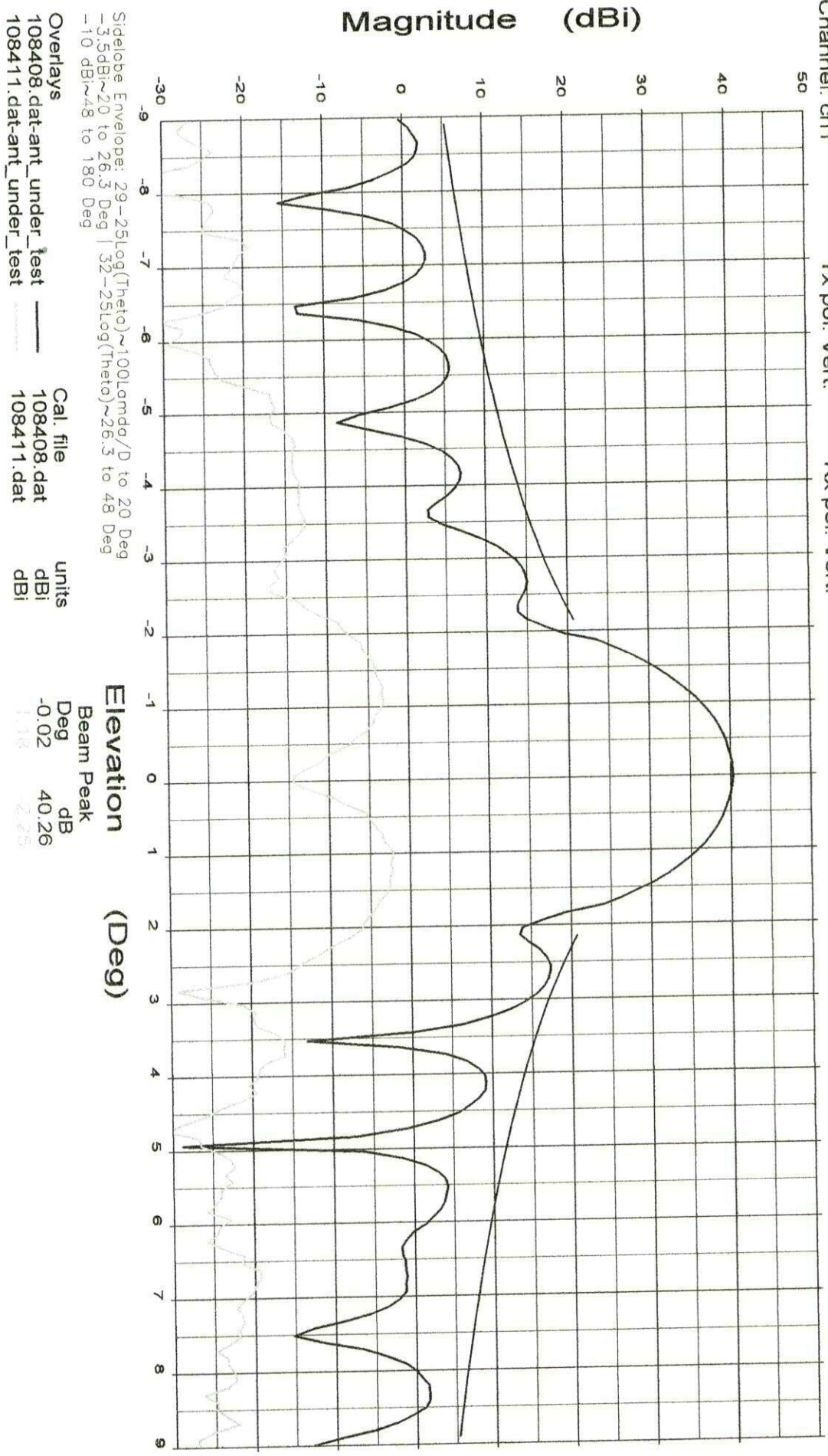
0.98 Meter Series 1981
Ku-Band Receiver-Transmit Antenna System

Frequency : 12.450 GHz

Operator: D. Lutz
Ser. no.: 070902
Channel: ch1

Tx pol: Vert.

Rx pol: Vert.



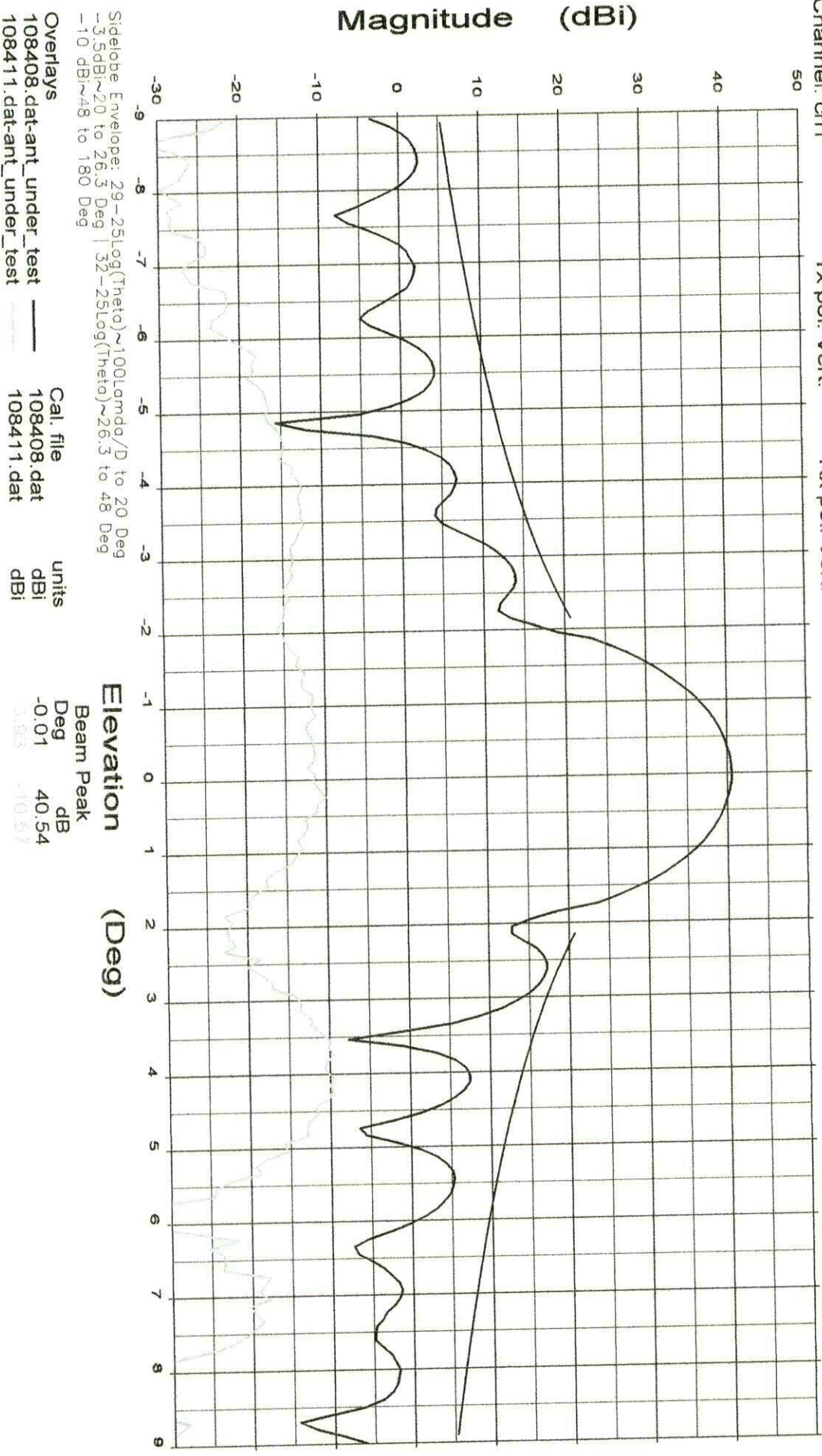
File: See Legend

0.98 Meter Series 1981
Ku-Band Receive-Transmit Antenna System

Frequency : 12.750 GHz

Operator: D. Lutz
Ser. no.: 070902
Channel: ch1

Tx pol: Vert. Rx pol: Vert.



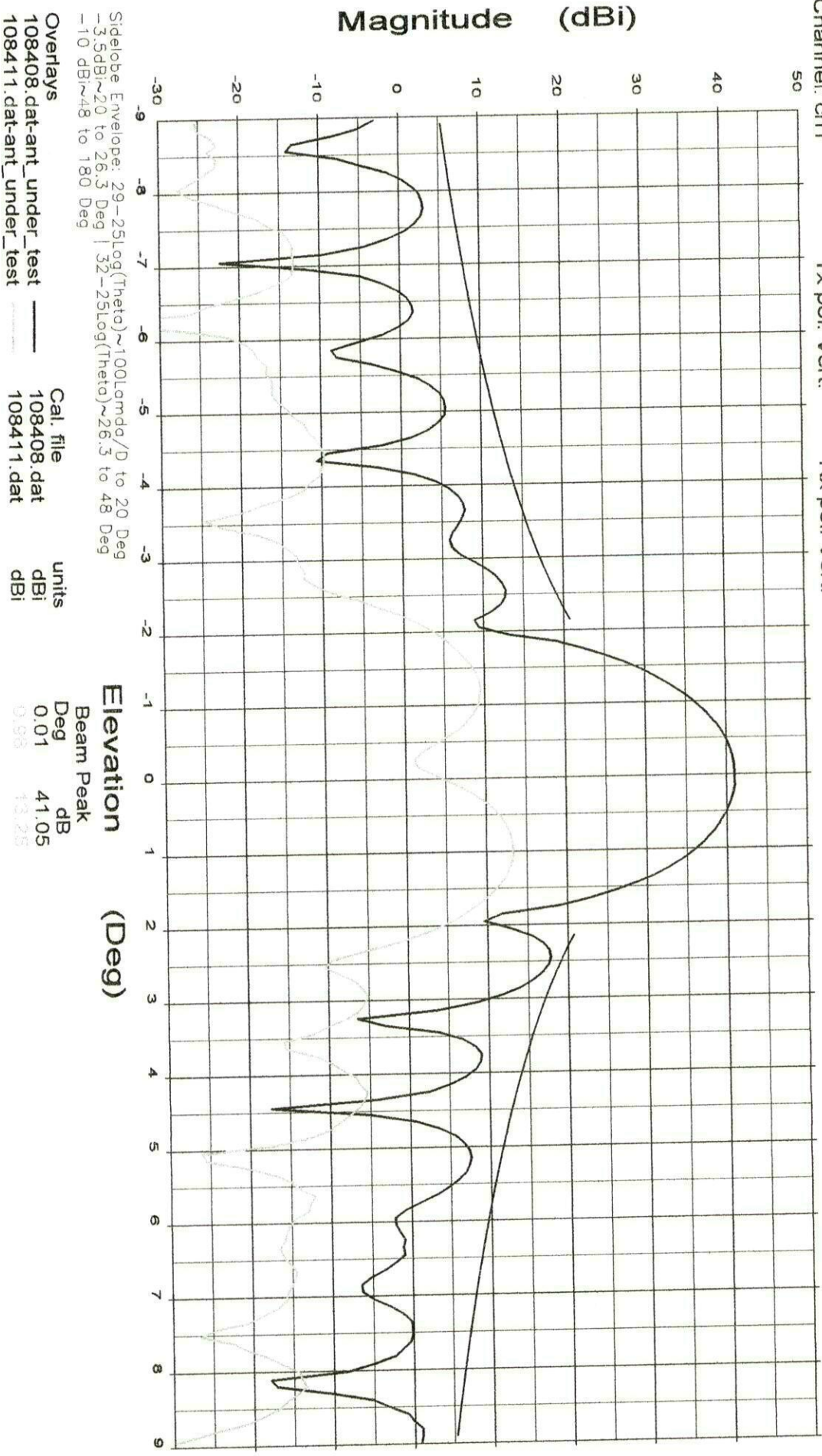
File: See Legend

0.98 Meter Series 1981
Ku-Band Receive-Transmit Antenna System

Frequency : 13.750 GHz

Operator: D. Lutz
Ser. no.: 070902
Channel: ch1

Tx pol: Vert. Rx pol: Vert.



File: See Legend

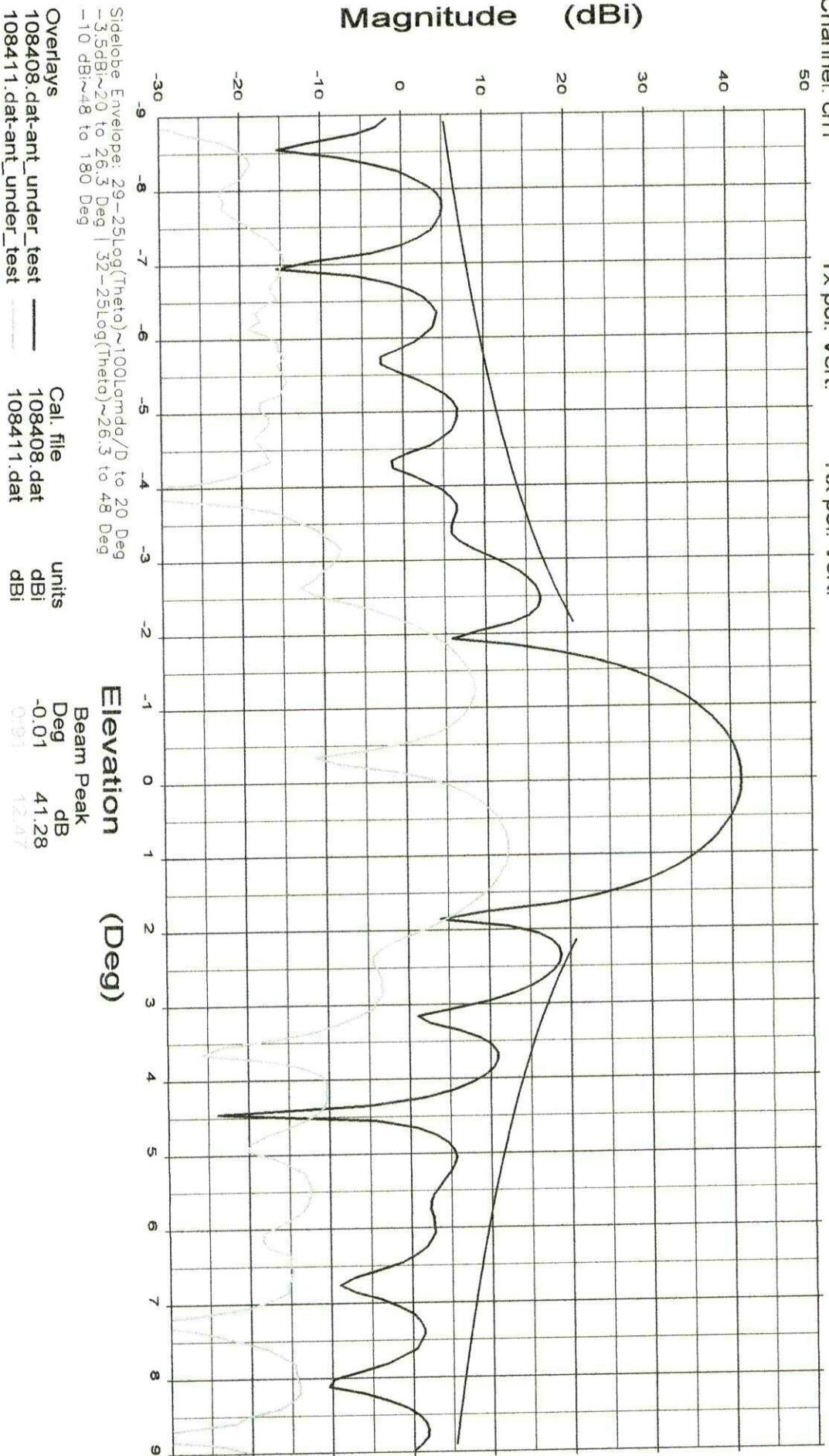
0.98 Meter Series 1981
Ku-Band Receive-Transmit Antenna System

Frequency : 14.000 GHz

Operator: D. Lutz
Ser. no.: 070902
Channel: ch1

Tx pol: Vert.

Rx pol: Vert.



File: See Legend

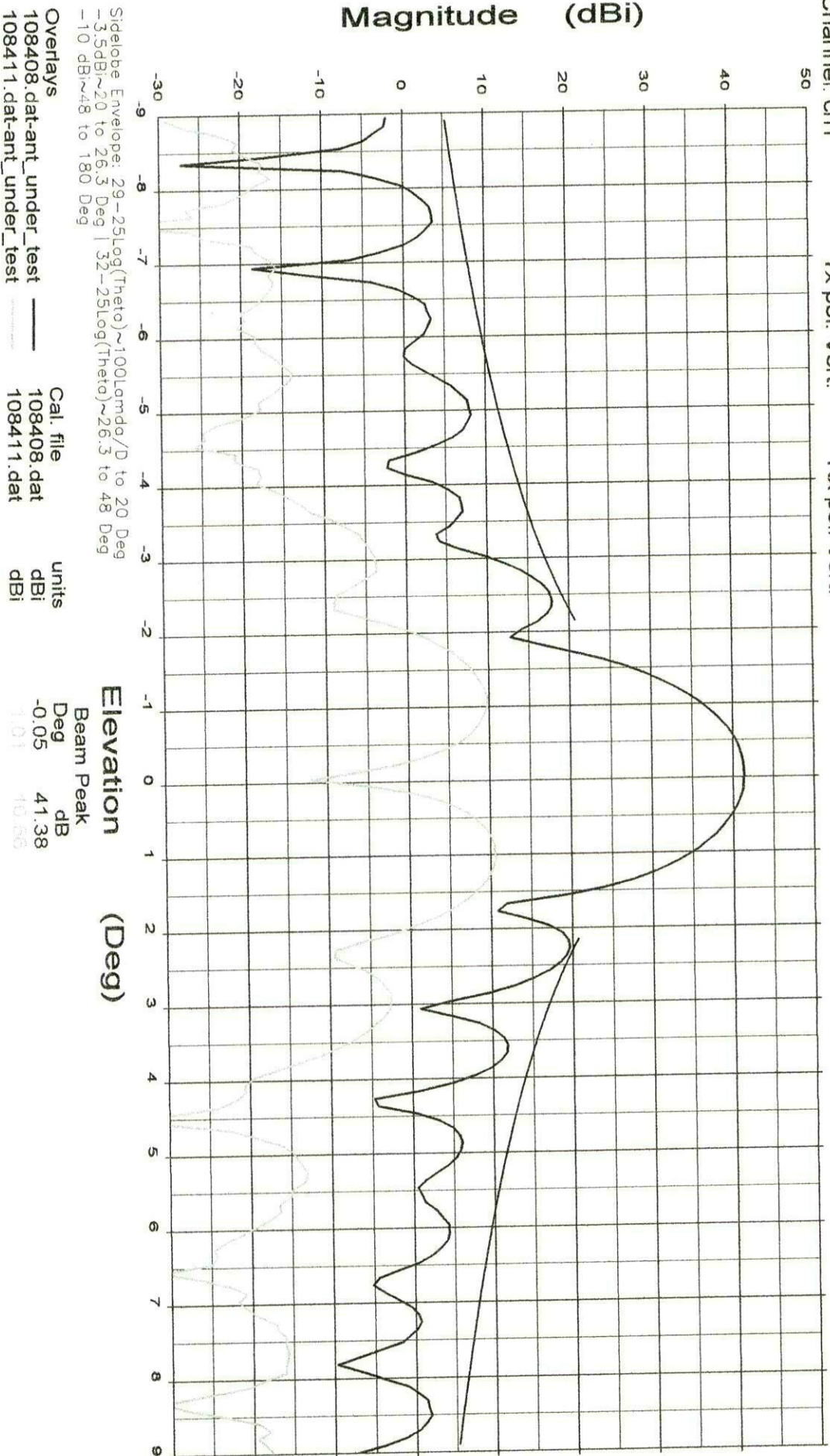
0.98 Meter Series 1981
Ku-Band Receive-Transmit Antenna System

Frequency : 14.250 GHz

Operator: D. Lutz
Ser. no.: 070902
Channel: ch1

Tx pol: Vert.

Rx pol: Vert.



File: See Legend

0.98 Meter Series 1981
Ku-Band Receive-Transmit Antenna System

Frequency : 14.500 GHz

Operator: D. Lutz
Ser. no.: 070902
Channel: ch1

Tx pol: Vert.

Rx pol: Vert.

