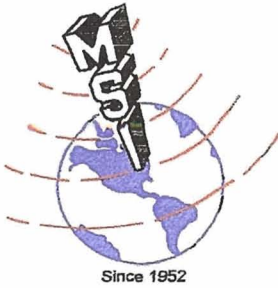


Multicomm Sciences Int'l, Inc



Wireless Engineering Services

**FCC - Satellite - Microwave - Lightguide
Frequency Coordination - Path Surveys
Radiation Hazard Testing - CAD & Route Mapping**

Mail@MulticommSciences.com

266 West Main Street

Denville, NJ 07834

Phone: 973-627-7400

Fax: 973-625-1002

<http://www.MulticommSciences.com>

FREQUENCY COORDINATION REPORT

6 TRANSMIT-ONLY EARTH STATION

RPM GROUP, LLC

SALT LAKE CITY, UT

MAY 18, 2006

1. **CONCLUSIONS**

An Interference Study considering all existing, proposed and prior coordinated microwave facilities within the coordination contours of the proposed Earth Station demonstrates that this site will operate satisfactorily with the Microwave Environment as defined on the frequency coordination data sheet.

2. **SUMMARY OF RESULTS**

All of the potential great circle interference cases at 6 GHz were found to be acceptable on the basis that harmful interference will not likely result from the proposed operation, considering the criteria, the potential interference receive levels, and the total propagation losses.

There were no reported cases of rain scatter beam intersections.

3. **SUPPLEMENTAL SHOWING**

The Satellite Earth station proposed in this Application was coordinated by Multicomm Sciences International, Inc., Frequency Coordinators Group, using computer techniques and in accordance with Parts 25 and 101 of the FCC Rules and Regulations.

4. **FREQUENCY COORDINATION DATA**

Frequency Coordination Data which is attached, contains the following:

Technical Characteristics of Proposed Earth Station

Horizon Antenna Gain Plot

Discrimination Angle Plot

Local Horizon Plot

Satellite Elevation Plot

6 GHz Coordination Contour

6 GHz Rain Scatter

5. **FREQUENCY COORDINATION STATEMENT (FCC PART 101)**

Holders of licenses, permittees, prior filed applicants or planners of 6 GHz transmitting stations were notified on May 4, 2006 of the proposed Earth Station technical details in accordance with Section 25.203 (c-2) of the FCC Rules and

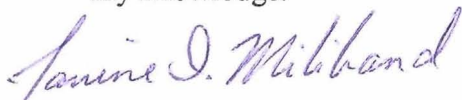
Regulations. Satisfactory coordination was achieved on the basis that harmful interference would not occur, or that sufficient terrestrial blocking exists.

New Cingular Wireless PCS LLC – ID, UT
Carbon/Emery Telecom
Citizens Telecommunications of Utah
Corban Networks
Great Salt Flats Partnership
Brigham Young University (KBYU)
Manti Telephone
Nextel License Holdings 4
Union Telephone
Qwest
All West Communications
Provo Cellular Telephone
Amoco Production dba BP Amoco
Northwest Pipeline
Questar Infocomm
Wasatch Utah RSA No 2 LP
Verizon Wireless (VAW) LLC – UT
Bonneville Holding (KSL-TV)
Voicestream Wireless PCS II Lic
Voicestream Wireless PCS BTA 1 Lic
Pacifcorp
Deseret Generation and Transmission
Utah, State of
Salt Lake, County of

6. **Certification of Person Responsible for Preparing Frequency Coordination Information Submitted in this Application**

I hereby certify that I am the technically qualified person responsible for preparation of the frequency coordination information contained in this application; that I am familiar with Parts 101 and 25 of the Commission’s Rules;

that I have either prepared or reviewed the frequency coordination information submitted in this application; and, that it is complete and accurate to the best of my knowledge.

A handwritten signature in blue ink that reads "Janine I. Miliband". The signature is written in a cursive style with a large, looping initial "J".

Janine I. Miliband, Manager
Frequency Coordination Services
Multicomm Sciences International, Inc.
May 18, 2006

SATELLITE EARTH STATION
FREQUENCY COORDINATION DATA
05/02/06

COMPANY NAME:	RPM GROUP, LLC.
EARTH STATION LOCATION:	SALT LAKE CITY, UT
LATITUDE(DMS):	40 43 57.4 (NAD83)
LONGITUDE(DMS):	111 57 6.6
SITE GROUND ELEVATION(FT. AMSL):	4230.0
ANTENNA CENTER LINE(FT)	8.0
ANTENNA TYPE:	ANDREW ES45
ANTENNA DIAMETER(METERS):	4.5
6 GHZ ANTENNA GAIN(DBI):	46.2
15 DB HALF BEAMWIDTH (DEG)	1.00
OPERATING MODE:	T/O
TRANSMIT BAND(MHZ):	6405
EMISSION DESIGNATOR	21MOG1F
MODULATION:	DIGITAL
MAX. AVAILABLE RF POWER(DBW/4KHZ):	-13.2
(DBW/21MHZ):	24.0
MAX. EIRP (DBW/4KHZ):	33.0
(DBW/21MHZ):	70.2
MAX. PERMISSIBLE INTERFERENCE POWER	
6 GHZ 20%(DBW/4KHZ)	-154.0
6 GHZ 0.0025%(DBW/4KHZ)	-131.0
SATELLITE ARC (MIN/MAX)	127/127 DEG
AZIMUTH	202.4/202.4 DEG
ELEVATION	40.4/ 40.4 DEG
RADIO CLIMATE	A
RAIN ZONE	5
MAXIMUM GREAT CIRCLE COORDINATION DISTANCE(KM)	
6 GHZ	124.5
PRECIPITATION SCATTER CONTOUR RADIUS(KM)	
6 GHZ	127.1

MULTICOMM SCIENCES INTERNATIONAL, INC.
Denville, NJ 07834 (973)-627-7400

SALT LAKE CITY, UT
 40 43 57.4
 111 57 6.6

AZIMUTH DEGREES	HORIZON ANGLE DEGREES	DISC ANGLE DEGREES	HORIZON GAIN DBI	4GHZ COORD DISTANCE KM	6 GHZ DISTANCE KM	RAIN4 SCATTER KM	RAIN6 SCATTER KM
5.	.0	179.0	-10.0	.0	118.2	.0	127.1
10.	.0	179.0	-10.0	.0	118.2	.0	127.1
15.	.0	179.0	-10.0	.0	118.2	.0	127.1
20.	.0	179.0	-10.0	.0	118.2	.0	127.1
25.	.0	179.0	-10.0	.0	118.2	.0	127.1
30.	.0	177.1	-10.0	.0	118.2	.0	127.1
35.	.0	172.2	-10.0	.0	118.2	.0	127.1
40.	.0	167.4	-10.0	.0	118.2	.0	127.1
45.	.0	162.5	-10.0	.0	118.2	.0	127.1
50.	.0	157.7	-10.0	.0	118.2	.0	127.1
55.	.0	152.8	-10.0	.0	118.2	.0	127.1
60.	.0	148.0	-10.0	.0	118.2	.0	127.1
65.	.0	143.2	-10.0	.0	118.2	.0	127.1
70.	.0	138.4	-10.0	.0	118.2	.0	127.1
75.	.0	133.7	-10.0	.0	118.2	.0	127.1
80.	.0	128.9	-10.0	.0	118.2	.0	127.1
85.	.0	124.2	-10.0	.0	118.2	.0	127.1
90.	.0	119.4	-10.0	.0	118.2	.0	127.1
95.	.0	114.8	-10.0	.0	118.2	.0	127.1
100.	.0	110.1	-10.0	.0	118.2	.0	127.1
105.	.0	105.5	-10.0	.0	118.2	.0	127.1
110.	.0	100.9	-10.0	.0	118.2	.0	127.1
115.	.0	96.3	-10.0	.0	118.2	.0	127.1
120.	.0	91.8	-10.0	.0	118.2	.0	127.1
125.	.0	87.3	-10.0	.0	118.2	.0	127.1
130.	.0	82.9	-10.0	.0	118.2	.0	127.1
135.	.0	78.6	-10.0	.0	118.2	.0	127.1
140.	.0	74.4	-10.0	.0	118.2	.0	127.1
145.	.0	70.2	-10.0	.0	118.2	.0	127.1
150.	.0	66.2	-10.0	.0	118.2	.0	127.1
155.	.0	62.3	-10.0	.0	118.2	.0	127.1
160.	.0	58.6	-10.0	.0	118.2	.0	127.1
165.	.0	55.1	-10.0	.0	118.2	.0	127.1
170.	.0	51.8	-10.0	.0	118.2	.0	127.1
175.	.0	48.8	-10.0	.0	118.2	.0	127.1
180.	.0	46.2	-9.6	.0	119.5	.0	127.1
185.	.0	44.0	-9.1	.0	121.3	.0	127.1
190.	.0	42.3	-8.7	.0	122.8	.0	127.1
195.	.0	41.1	-8.3	.0	123.9	.0	127.1
200.	.0	40.5	-8.2	.0	124.5	.0	127.1
205.	.0	40.5	-8.2	.0	124.5	.0	127.1

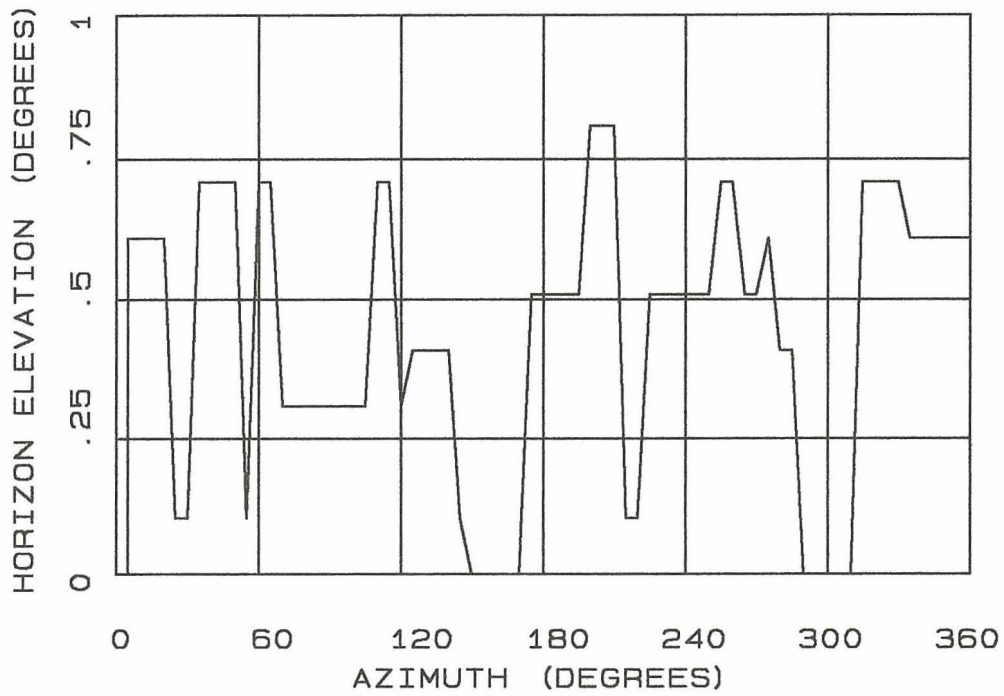
MULTICOMM SCIENCES INTERNATIONAL, INC.
 Denville, NJ 07834 (973)-627-7400

SALT LAKE CITY, UT
 40 43 57.4
 111 57 6.6

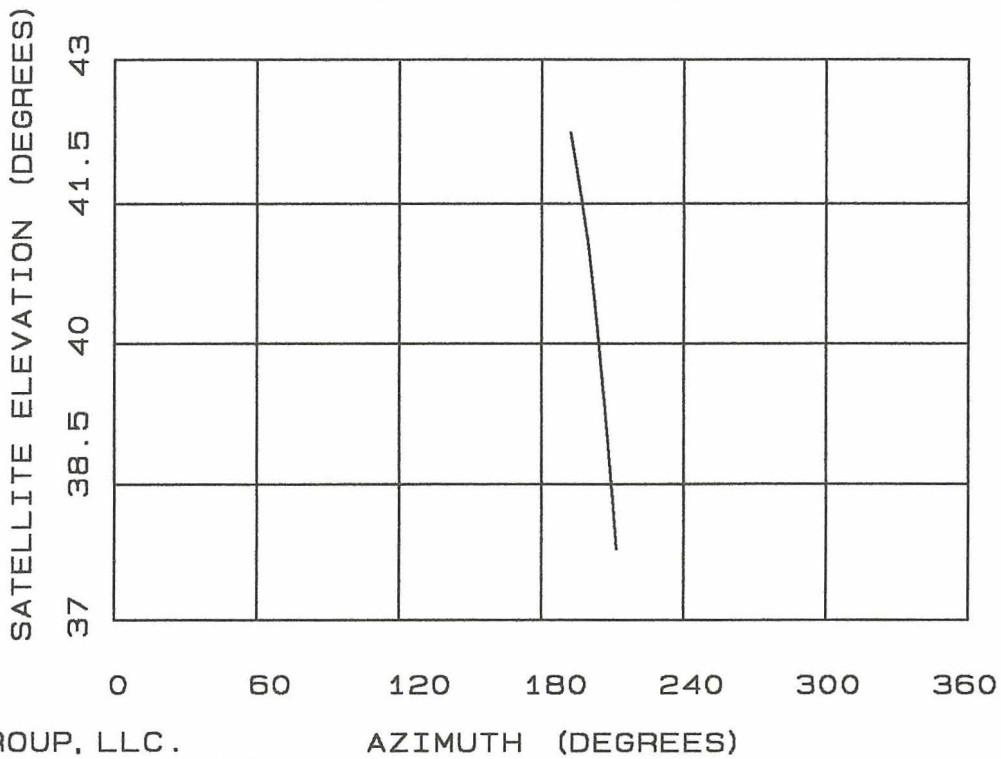
AZIMUTH DEGREES	HORIZON ANGLE DEGREES	DISC ANGLE DEGREES	HORIZON GAIN DBI	4GHZ COORD DISTANCE KM	6 GHZ DISTANCE KM	RAIN4 SCATTER KM	RAIN6 SCATTER KM
210.	.0	41.1	-8.4	.0	123.9	.0	127.1
215.	.0	42.4	-8.7	.0	122.8	.0	127.1
220.	.0	44.1	-9.1	.0	121.2	.0	127.1
225.	.0	46.3	-9.6	.0	119.4	.0	127.1
230.	.0	49.0	-10.0	.0	118.2	.0	127.1
235.	.0	51.9	-10.0	.0	118.2	.0	127.1
240.	.0	55.2	-10.0	.0	118.2	.0	127.1
245.	.0	58.7	-10.0	.0	118.2	.0	127.1
250.	.0	62.5	-10.0	.0	118.2	.0	127.1
255.	.0	66.4	-10.0	.0	118.2	.0	127.1
260.	.0	70.4	-10.0	.0	118.2	.0	127.1
265.	.0	74.5	-10.0	.0	118.2	.0	127.1
270.	.0	78.8	-10.0	.0	118.2	.0	127.1
275.	.0	83.1	-10.0	.0	118.2	.0	127.1
280.	.0	87.5	-10.0	.0	118.2	.0	127.1
285.	.0	92.0	-10.0	.0	118.2	.0	127.1
290.	.0	96.5	-10.0	.0	118.2	.0	127.1
295.	.0	101.1	-10.0	.0	118.2	.0	127.1
300.	.0	105.7	-10.0	.0	118.2	.0	127.1
305.	.0	110.3	-10.0	.0	118.2	.0	127.1
310.	.0	115.0	-10.0	.0	118.2	.0	127.1
315.	.0	119.6	-10.0	.0	118.2	.0	127.1
320.	.0	124.4	-10.0	.0	118.2	.0	127.1
325.	.0	129.1	-10.0	.0	118.2	.0	127.1
330.	.0	133.9	-10.0	.0	118.2	.0	127.1
335.	.0	138.6	-10.0	.0	118.2	.0	127.1
340.	.0	143.4	-10.0	.0	118.2	.0	127.1
345.	.0	148.2	-10.0	.0	118.2	.0	127.1
350.	.0	153.0	-10.0	.0	118.2	.0	127.1
355.	.0	157.9	-10.0	.0	118.2	.0	127.1
360.	.0	162.7	-10.0	.0	118.2	.0	127.1

MULTICOMM SCIENCES INTERNATIONAL, INC.
 Denville, NJ 07834 (973)-627-7400

LOCAL HORIZON PLOT



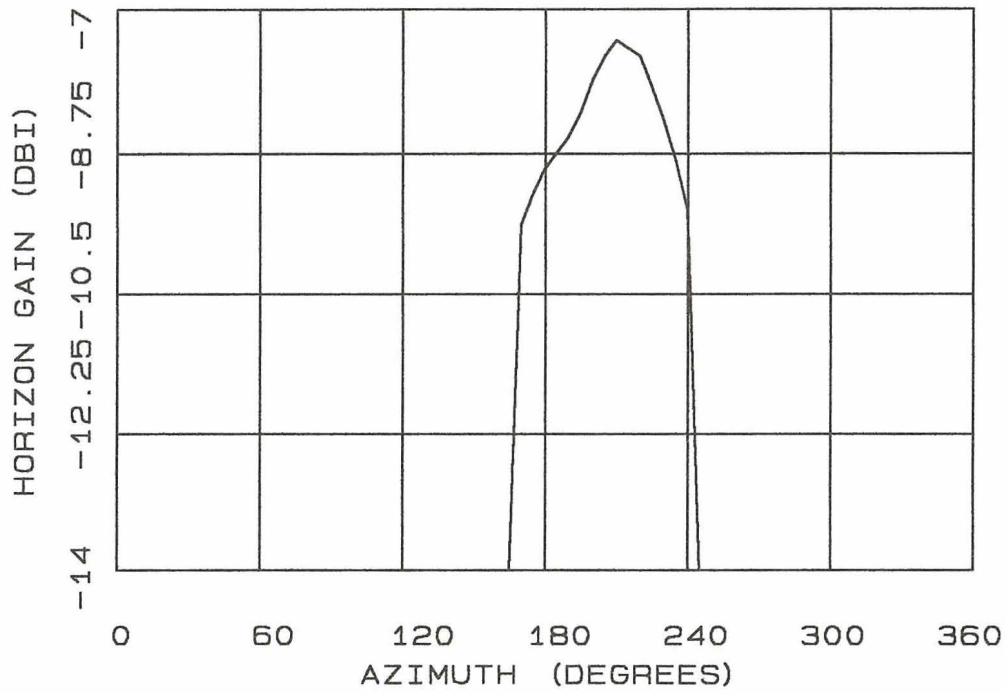
SATELLITE ELEVATION PLOT



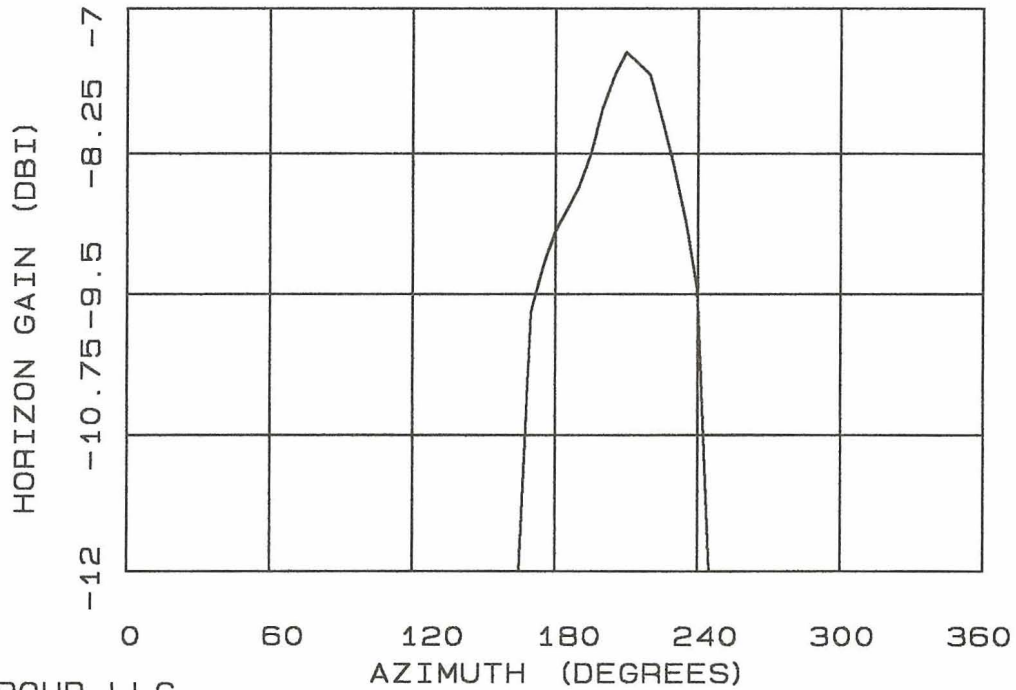
RPM GROUP, LLC.
SALT LAKE CITY, UT
40 43 57 N 111 57 6 W
05-16-2006

MSI

HORIZON ANTENNA GAIN PLOT 6 GHZ

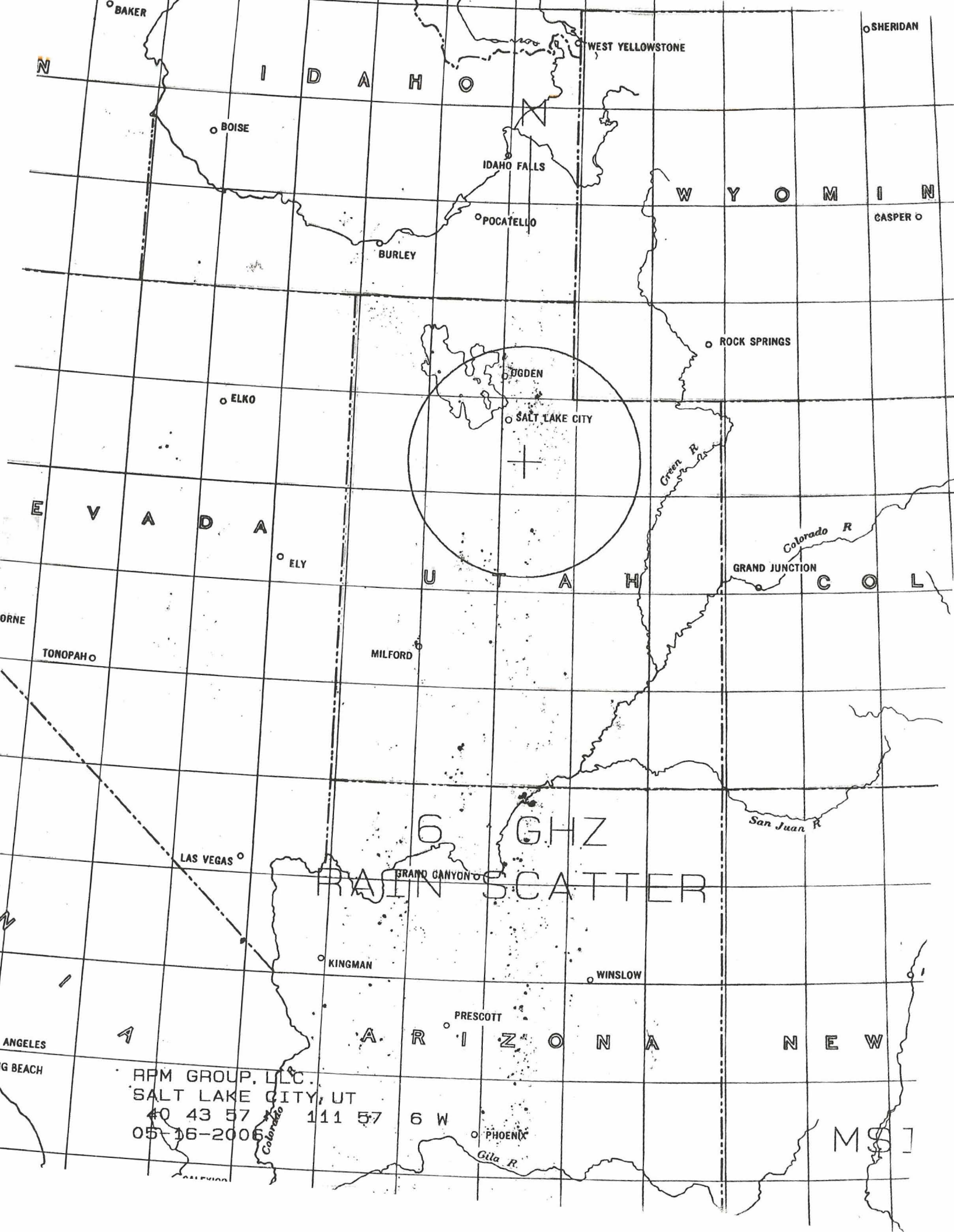


HORIZON ANTENNA PLOT 4 GHZ



RPM GROUP, LLC.
SALT LAKE CITY, UT
40 43 57 N 111 57 6 W
05-16-2006

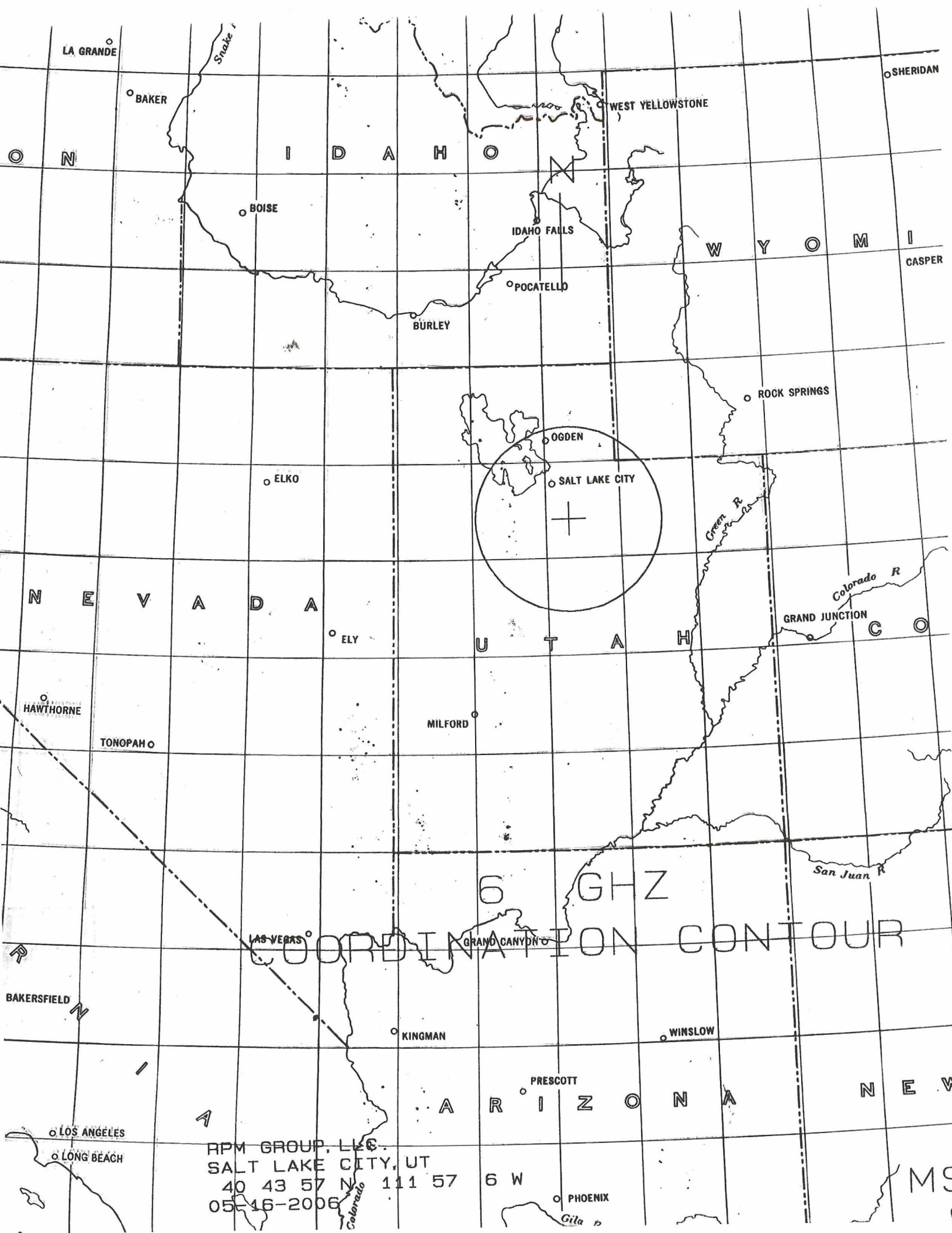
MSI



RPM GROUP, LLC.
SALT LAKE CITY, UT
#0 43 57 111 57
05-16-2006

6 GHz
RAIN SCATTER

MSI



LA GRANDE

BAKER

Snake R

I D A H O

BOISE

IDAHO FALLS

POCATELLO

BURLEY

WEST YELLOWSTONE

SHERIDAN

W Y O M I

CASPER

ROCK SPRINGS

ELKO

OGDEN

SALT LAKE CITY

N E V A D A

ELY

U T A H

Green R

Colorado R

GRAND JUNCTION

C O

HAWTHORNE

TONOPAH

MILFORD

San Juan R

6 GHz

COORDINATION CONTOUR

LAS VEGAS

GRAND CANYON

BAKERSFIELD

KINGMAN

WINSLOW

A R I Z O N A

N E V

LOS ANGELES

LONG BEACH

RPM GROUP, LLC
SALT LAKE CITY, UT
40 43 57 N 111 57 W
05-16-2006

PRESCOTT

PHOENIX

Gila R

MS