

**Parties to the Application**

The numbered items below refer to line numbers in the following tables:

- 1) Names and address<sup>1</sup> of the Assignee and each party to the application holding an attributable interest.
- 2) Citizenship.
- 3) Positional Interest: Office, director, general partner, limited partner, LLC member, investor, creditor attributable under the equity, debt plus standard, etc.
- 4) Percentage of votes.
- 5) Percentage of total assets (debt plus equity).<sup>2</sup>

**Figures 1 and 2**, attached hereto, depict the ownership structure detailed below.

**CC Licenses LLC**, the Assignee, has the following officers, directors and controlling entities, all of which use the address 7136 S. Yale Ave., Suite 501, Tulsa, OK, 74136:

	(1)	(2)	(3)	(4)	(5)
1.	CC Licenses LLC	U.S.	Proposed Assignee	--	--
2.	Richard J. Bressler	U.S.	CFO, President	0	0
3.	Jeff Littlejohn	U.S.	EVP-Engineering & Systems Integration-IHM	0	0
4.	Robert H. Walls, Jr.	U.S.	EVP, General Counsel, Secretary	0	0
5.	Steven Macri	U.S.	EVP and CFO-IHM	0	0
6.	Scott T. Bick	U.S.	SVP-Tax	0	0
7.	Brian D. Coleman	U.S.	SVP, Treasurer, Assistant Secretary	0	0
8.	Stephen G. Davis	U.S.	SVP-Real Estate, Facilities and Capital Management	0	0
9.	Lauren E. Dean	U.S.	VP, Associate General Counsel, Assistant Secretary	0	0
10.	iHeartMedia + Entertainment, Inc.	U.S.	Member	100	100

<sup>1</sup> An address for each individual is provided only once—in the first table in which that individual appears. Bain Capital Investors, LLC (“Bain”) is located at 200 Clarendon Street, Boston, MA 02116. Thomas H. Lee Partners (“Lee”) is located at 100 Federal Street, 35th Floor, Boston, MA 02110.

<sup>2</sup> The information provided in response to Item 4(a) subpart 5 is the percentage of total voting and non-voting equity in iHeartCommunications, Inc. or its licensee subsidiaries held by each party to the application, after applying the correct multiplier, if any. No debt or non-attributable equity holder will have an attributable interest in the Assignee by virtue of the “equity debt plus” rule. See 47 C.F.R. § 73.3555, Note 2(i).

**iHeartMedia + Entertainment, Inc.**, the sole member of CC Licenses LLC, has the following officers, directors and controlling entities, all of which use the address 7136 S. Yale Ave., Suite 501, Tulsa, OK, 74136:

	(1)	(2)	(3)	(4)	(5)
1.	iHeartMedia + Entertainment, Inc.	U.S.	--	--	--
2.	Richard J. Bressler	U.S.	CFO, President, Director	0	0
3.	Jeff Littlejohn	U.S.	EVP-Engineering & Systems Integration-IHM	0	0
4.	Robert H. Walls, Jr.	U.S.	EVP, General Counsel, Secretary, Director	0	0
5.	Steven Macri	U.S.	EVP and CFO-IHM	0	0
6.	Scott T. Bick	U.S.	SVP-Tax	0	0
7.	Brian D. Coleman	U.S.	SVP, Treasurer, Assistant Secretary	0	0
8.	Stephen G. Davis	U.S.	SVP-Real Estate, Facilities and Capital Management	0	0
9.	Lauren E. Dean	U.S.	VP, Associate General Counsel, Assistant Secretary	0	0
10.	CC Broadcast Holdings, Inc.	U.S.	Shareholder	100	100

**CC Broadcast Holdings, Inc.** has the following officers, directors and controlling entities, all of which use the address 7136 S. Yale Ave., Suite 501, Tulsa, OK, 74136:

	(1)	(2)	(3)	(4)	(5)
1.	CC Broadcast Holdings, Inc.	U.S.	--	--	--
2.	Richard J. Bressler	U.S.	CFO, President, Director	0	0
3.	Jeff Littlejohn	U.S.	EVP-Engineering & Systems Integration-IHM	0	0
4.	Robert H. Walls, Jr.	U.S.	EVP, General Counsel, Secretary, Director	0	0
5.	Steven Macri	U.S.	EVP and CFO-IHM	0	0
6.	Brian D. Coleman	U.S.	SVP, Treasurer, Assistant Secretary	0	0
7.	Stephen G. Davis	U.S.	SVP-Real Estate, Facilities and Capital Management	0	0
8.	Lauren E. Dean	U.S.	VP, Assistant General Counsel, Assistant Secretary	0	0
9.	Scott T. Bick	U.S.	SVP-Tax	0	0
10.	Clear Channel Broadcasting Licenses, Inc.	U.S.	Shareholder	100	100

**Clear Channel Broadcasting Licenses, Inc.**, has the following officers, directors and controlling entities, all of which use the address 7136 S. Yale Ave., Suite 501, Tulsa, OK, 74136:

	(1)	(2)	(3)	(4)	(5)
1.	Clear Channel Broadcasting Licenses, Inc.	U.S.	--	--	--
2.	Richard J. Bressler	U.S.	CFO, President, Director	0	0
3.	Jeff Littlejohn	U.S.	EVP-Engineering & Systems Integration-IHM	0	0
4.	Robert H. Walls, Jr.	U.S.	EVP, General Counsel, Secretary, Director	0	0
5.	Steven Macri	U.S.	EVP and CFO-IHM	0	0
6.	Brian D. Coleman	U.S.	SVP, Treasurer, Assistant Secretary	0	0
7.	Stephen G. Davis	U.S.	SVP-Real Estate, Facilities and Capital Management	0	0
8.	Lauren E. Dean	U.S.	VP, Assistant General Counsel, Assistant Secretary	0	0
9.	Scott T. Bick	U.S.	SVP-Tax	0	0
10.	Clear Channel Holdings, Inc.	U.S.	Shareholder	100	100

**Clear Channel Holdings, Inc.**, has the following officers, directors and controlling entities, all of which use the address 7136 S. Yale Ave., Suite 501, Tulsa, OK, 74136:

	(1)	(2)	(3)	(4)	(5)
1.	Clear Channel Holdings, Inc.	U.S.	--	--	--
2.	Richard J. Bressler	U.S.	CFO, President, Director	0	0
3.	Robert H. Walls, Jr.	U.S.	EVP, General Counsel, Secretary, Director	0	0
4.	Brian D. Coleman	U.S.	SVP, Treasurer, Assistant Secretary	0	0
5.	Lauren E. Dean	U.S.	VP, Associate General Counsel, Assistant Secretary	0	0
6.	Scott T. Bick	U.S.	SVP-Tax	0	0
7.	iHeartCommunications, Inc.	U.S.	Shareholder	100	100

**iHeartCommunications, Inc.**, the sole shareholder of Clear Channel Holdings, Inc., has the following officers, directors and controlling entities, all of which use the address 7136 S. Yale Ave., Suite 501, Tulsa, OK, 74136, unless otherwise indicated:

	(1)	(2)	(3)	(4)	(5)
1.	iHeart Communications, Inc.	U.S.	--	--	--
2.	Scott R. Wells	U.S.	CEO – Clear Channel Outdoor Americas	0	0
3.	Robert H. Walls, Jr.	U.S.	EVP, General Counsel, Secretary	0	0
4.	Scott D. Hamilton	U.S.	SVP, CAO, Assistant Secretary	0	0
5.	Jessica Marventano	U.S.	SVP-Government Affairs	0	0

	(1)	(2)	(3)	(4)	(5)
6.	Steve Mills	U.S.	EVP, Chief Information Officer	0	0
7.	Brian D. Coleman	U.S.	SVP, Treasurer	0	0
8.	Scott T. Bick	U.S.	SVP-Tax	0	0
9.	Lauren E. Dean	U.S.	VP, Associate General Counsel, Assistant Secretary	0	0
10.	David Rokosky	U.S.	VP-Procurement	0	0
11.	Juliana F. Hill	U.S.	SVP-Liquidity & Asset Management	0	0
12.	C. William Eccleshare	U.K.	Chairman and CEO– Clear Channel Outdoor International	0	0
13.	Wendy Goldberg	U.S.	EVP-Communications	0	0
14.	Paul McNicol	U.S.	EVP & Deputy General Counsel	0	0
15.	Robert W. Pittman	U.S.	Chairman, CEO, Director	0	0
16.	Duaine Smith	U.S.	SVP and General Auditor	0	0
17.	Steven J. Macri	U.S.	SVP-Corporate Finance	0	0
18.	Gayle Troberman	U.S.	EVP and Chief Marketing Officer	0	0
19.	Frederic F. Brace	U.S.	Director	0	0
20.	Charles H. Cremens	U.S.	Director	0	0
21.	Matthew J. Freeman c/o Bain Capital Investors, LLC	U.S.	Director	0	0
22.	John P. Connaughton c/o Bain Capital Investors, LLC	U.S.	Director	0	0
23.	John Belitsos c/o Bain Capital Investors, LLC	U.S.	Director	0	0
24.	Blair E. Hendrix c/o Bain Capital Investors, LLC	U.S.	Director	0	0
25.	Richard J. Bressler	U.S.	COO, CFO, President, Director	0	0
26.	James C. Carlisle c/o Thomas H. Lee Partners	U.S.	Director	0	0
27.	Laura A. Grattan c/o Thomas H. Lee Partners	U.S.	Director	0	0
28.	Scott M. Sperling c/o Thomas H. Lee Partners	U.S.	Director	0	0
29.	David C. Abrams c/o Joseph F. Mazzella 200 Clarendon St., 59 <sup>th</sup> Floor Boston, MA 02116	U.S.	Director	0	0
30.	Jonathon S. Jacobson c/o Joseph F. Mazzella 200 Clarendon St., 59 <sup>th</sup> Floor Boston, MA 02116	U.S.	Director	0	0

	(1)	(2)	(3)	(4)	(5)
31.	iHeartMedia Capital I, LLC	U.S.	Shareholder	100	100

**iHeartMedia Capital I, LLC**, the sole shareholder of iHeartCommunications, Inc., has the following officers, directors and controlling entities, all of which use the address 7136 S. Yale Ave., Suite 501, Tulsa, OK, 74136, unless otherwise indicated:

	(1)	(2)	(3)	(4)	(5)
1.	iHeartMedia Capital I, LLC	U.S.	--	--	--
2.	Scott R. Wells	U.S.	CEO – Clear Channel Outdoor Americas	0	0
3.	Robert H. Walls, Jr.	U.S.	EVP, General Counsel, Secretary	0	0
4.	Scott D. Hamilton	U.S.	SVP, CAO, Assistant Secretary	0	0
5.	Jessica Marventano	U.S.	SVP-Government Affairs	0	0
6.	Brian D. Coleman	U.S.	SVP, Treasurer	0	0
7.	Scott T. Bick	U.S.	SVP-Tax	0	0
8.	Lauren E. Dean	U.S.	VP, Associate General Counsel, Assistant Secretary	0	0
9.	David Rokosky	U.S.	VP-Procurement	0	0
10.	Juliana F. Hill	U.S.	SVP-Liquidity & Asset Management	0	0
11.	Steve Mills	U.S.	SVP-Chief Information Officer	0	0
12.	C. William Eccleshare	U.K.	Chairman and CEO– Clear Channel Outdoor International	0	0
13.	Wendy Goldberg	U.S.	EVP-Communications	0	0
14.	Robert W. Pittman	U.S.	Chairman, CEO, Manager	0	0
15.	Duaine Smith	U.S.	SVP and General Auditor	0	0
16.	Steven J. Macri	U.S.	SVP-Corporate Finance	0	0
17.	Gayle Troberman	U.S.	EVP and Chief Marketing Officer	0	0
18.	Paul McNicol	U.S.	EVP & Deputy General Counsel	0	0
19.	Frederic F. Brace	U.S.	Manager	0	0
20.	Charles H. Cremens	U.S.	Manager	0	0
21.	John P. Connaughton c/o Bain Capital Investors, LLC	U.S.	Manager	0	0
22.	Matthew J. Freeman c/o Bain Capital Investors, LLC	U.S.	Manager	0	0
23.	John Belitsos c/o Bain Capital Investors, LLC	U.S.	Manager	0	0
24.	Blair E. Hendrix c/o Bain Capital Investors, LLC	U.S.	Manager	0	0
25.	Richard J. Bressler	U.S.	COO, CFO, President, Manager	0	0
26.	James C. Carlisle c/o Thomas H. Lee	U.S.	Manager	0	0

	(1)	(2)	(3)	(4)	(5)
	Partners				
27.	Laura A. Grattan c/o Thomas H. Lee Partners	U.S.	Manager	0	0
28.	Scott M. Sperling c/o Thomas H. Lee Partners	U.S.	Manager	0	0
29.	David C. Abrams c/o Joseph F. Mazzella 200 Clarendon St., 59 <sup>th</sup> Floor Boston, MA 02116	U.S.	Manager	0	0
30.	Jonathon S. Jacobson c/o Joseph F. Mazzella 200 Clarendon St., 59 <sup>th</sup> Floor Boston, MA 02116	U.S.	Manager	0	0
31.	iHeartMedia Capital II, LLC	U.S.	Sole Member	100	100

**iHeartMedia Capital II, LLC**, the sole member of iHeartMedia Capital I, LLC, Inc., has the following officers, directors and controlling entities, all of which use the address 7136 S. Yale Ave., Suite 501, Tulsa, OK, 74136, unless otherwise indicated:

	(1)	(2)	(3)	(4)	(5)
1.	iHeartMedia Capital II, LLC	U.S.	--	--	--
2.	Scott R. Wells	U.S.	CEO—Clear Channel Outdoor Americas	0	0
3.	Robert H. Walls, Jr.	U.S.	EVP, General Counsel, Secretary	0	0
4.	Scott D. Hamilton	U.S.	SVP, CAO, Assistant Secretary	0	0
5.	Jessica Marventano	U.S.	SVP-Government Affairs	0	0
6.	Steve Mills	U.S.	SVP-Chief Information Officer	0	0
7.	Brian D. Coleman	U.S.	SVP, Treasurer	0	0
8.	Scott T. Bick	U.S.	SVP-Tax	0	0
9.	Lauren E. Dean	U.S.	VP, Associate General Counsel, Assistant Secretary	0	0
10.	David Rokosky	U.S.	VP-Procurement	0	0
11.	Juliana F. Hill	U.S.	SVP-Liquidity & Asset Management	0	0
12.	C. William Eccleshare	U.K.	Chairman and CEO— Clear Channel Outdoor International	0	0
13.	Wendy Goldberg	U.S.	EVP-Communications	0	0
14.	Robert W. Pittman	U.S.	Chairman, CEO, Manager	0	0
15.	Duaine Smith	U.S.	SVP and General Auditor	0	0
16.	Steven J. Macri	U.S.	SVP-Corporate Finance	0	0
17.	Gayle Troberman	U.S.	EVP and Chief Marketing Officer	0	0
18.	Paul McNicol	U.S.	EVP & Deputy General Counsel	0	0
19.	Frederic F. Brace	U.S.	Manager	0	0

	(1)	(2)	(3)	(4)	(5)
20.	Charles H. Cremens	U.S.	Manager	0	0
21.	Matthew J. Freeman c/o Bain Capital Investors, LLC	U.S.	Manager	0	0
22.	John P. Connaughton c/o Bain Capital Investors, LLC	U.S.	Manager	0	0
23.	John Belitsos c/o Bain Capital Investors, LLC	U.S.	Manager	0	0
24.	Blair E. Hendrix c/o Bain Capital Investors, LLC	U.S.	Manager	0	0
25.	Richard J. Bressler	U.S.	CFO, President, Manager	0	0
26.	James C. Carlisle c/o Thomas H. Lee Partners	U.S.	Manager	0	0
27.	Laura A. Grattan c/o Thomas H. Lee Partners	U.S.	Manager	0	0
28.	Scott M. Sperling c/o Thomas H. Lee Partners	U.S.	Manager	0	0
29.	David C. Abrams c/o Joseph F. Mazzella 200 Clarendon St., 59 <sup>th</sup> Floor Boston, MA 02116	U.S.	Manager	0	0
30.	Jonathon S. Jacobson c/o Joseph F. Mazzella 200 Clarendon St., 59 <sup>th</sup> Floor Boston, MA 02116	U.S.	Manager	0	0
31.	iHeartMedia, Inc.	U.S.	Sole Member	100	100

**iHeartMedia, Inc.**, the sole member of iHeartMedia Capital II, LLC, has the following officers and directors, all of which use the address 7136 S. Yale Ave., Suite 501, Tulsa, OK, 74136, unless otherwise indicated:

	(1)	(2)	(3)	(4)	(5)
1.	iHeartMedia, Inc.	U.S.	--	--	--
2.	Robert H. Walls, Jr.	U.S.	EVP, General Counsel, Secretary	<1	0
3.	Scott D. Hamilton	U.S.	SVP, CAO, Assistant Secretary	<1	0
4.	Jessica Marventano	U.S.	SVP-Government Affairs	<1	0
5.	Steve Mills	U.S.	SVP-Chief Information Officer	<1	0
6.	Brian D. Coleman	U.S.	SVP, Treasurer	<1	0
7.	Scott T. Bick	U.S.	SVP-Tax	<1	0

	(1)	(2)	(3)	(4)	(5)
8.	Lauren E. Dean	U.S.	VP, Associate General Counsel, Assistant Secretary	<1	0
9.	David Rokosky	U.S.	VP-Procurement	<1	0
10.	Gayle Troberman	U.S.	EVP and Chief Marketing Officer	<1	0
11.	Juliana F. Hill	U.S.	SVP-Liquidity & Asset Management	<1	0
12.	C. William Eccleshare	U.K.	Chairman and CEO– Clear Channel Outdoor International	<1	0
13.	Scott R. Wells	U.S.	CEO-Clear Channel Outdoor Americas	<1	0
14.	Wendy Goldberg	U.S.	EVP-Communications	<1	0
15.	Richard J. Bressler	U.S.	President, COO, CFO, Director	1.0	1.0
16.	Robert W. Pittman	U.S.	Chairman, CEO, Director	1.7	1.7
17.	Duaine Smith	U.S.	SVP, General Auditor	<1	0
18.	Steven Macri	U.S.	SVP, Corporate Finance	<1	0
19.	Paul McNicol	U.S.	SVP& Deputy General Counsel	<1	0
20.	Frederic F. Brace	U.S.	Director	0	0
21.	Charles H. Cremens	U.S.	Director	0	0
22.	Laura A. Grattan c/o Thomas H. Lee Partners	U.S.	Director	0	0
23.	John P. Connaughton c/o Bain Capital Investors, LLC	U.S.	Director	0	0
24.	John Belitsos c/o Bain Capital Investors, LLC	U.S.	Director	0	0
25.	Blair E. Hendrix c/o Bain Capital Investors, LLC	U.S.	Director	0	0
26.	James C. Carlisle c/o Thomas H. Lee Partners	U.S.	Director	0	0
27.	Matthew J. Freeman c/o Bain Capital Investors, LLC	U.S.	Director	0	0
28.	Scott M. Sperling c/o Thomas H. Lee Partners	U.S.	Director	0	0
29.	David C. Abrams c/o Joseph F. Mazzella 200 Clarendon St., 59th Floor Boston, MA 02116	U.S.	Director	7.8	7.8
30.	Jonathon S. Jacobson c/o Joseph F. Mazzella 200 Clarendon St., 59th Floor Boston, MA 02116	U.S.	Director	11.3	11.3



	(1)	(2)	(3)	(4)	(5)
31.	Clear Channel Capital IV, LLC <sup>3</sup>	U.S.	Majority Shareholder	67.7 <sup>4</sup>	0.6

**Clear Channel Capital IV, LLC**, which holds 67.7% of the voting stock of iHeartMedia, Inc., has the following officers, managers and controlling entities:

	(1)	(2)	(3)	(4) <sup>5</sup>	(5)
1.	Clear Channel Capital IV, LLC	U.S.	--	--	--
2.	John P. Connaughton	U.S.	Member, Board of Managers, Co-President, Secretary	0	0
3.	Ian K. Loring	U.S.	Member, Board of Managers, VP, Assistant Secretary	0	0
4.	Blair E. Hendrix	U.S.	Member, Board of Managers, VP, Assistant Treasurer	0	0
5.	Laura A. Grattan	U.S.	Member, Board of Managers	0	0
6.	Daniel C. Jones	U.S.	Member, Board of Managers	0	0
7.	James C. Carlisle	U.S.	Member, Board of Managers, VP, Assistant Treasurer	0	0
8.	Scott M. Sperling	U.S.	Member, Board of Managers, Co-President, Treasurer	0	0
9.	Bain Capital (CC) IX, L.P. c/o Bain Capital Investors, LLC	U.S.	Member	50	0
10.	Thomas H. Lee Equity Fund VI, L.P.	U.S.	Member	50	7.6

<sup>3</sup> iHeartMedia, Inc. ("IHM") has a board of directors composed of 13 members. Clear Channel Capital IV, LLC (which can be reached at c/o Bain Capital Partners, LLC, 200 Clarendon Street, Boston, Massachusetts 02116 and c/o Thomas H. Lee Partners, L.P., 100 Federal Street, Boston, Massachusetts 02110) owns all of the outstanding Class B Common Stock of IHM and has the voting power to determine 11 members of the CCMH board of directors, or 84.6% of the IHM board. The remaining two members of the board of directors, or 15.4%, are elected by IHM's public stockholders.

<sup>4</sup> Affiliates and associated investors of Bain and Lee beneficially own a majority of the equity interest in IHM in the form of non-voting, non-attributable stock.

<sup>5</sup> Each manager has one vote, with half the managers appointed by Bain and half by Lee. Any action by the board of managers requires a majority vote of those managers present, with at least one vote from a Bain representative and one vote from a Lee representative.

**Bain Capital (CC) IX, L.P.**, which has a 50% interest in Clear Channel Capital IV, LLC, is controlled as follows:

	(1)	(2)	(3)	(4)	(5)
1.	Bain Capital (CC) IX, L.P.	U.S.	--	--	--
2.	Bain Capital Partners (CC) IX, L.P. c/o Bain Capital Investors, LLC	U.S.	General Partner	100	0
3.	Insulated Limited Partners	--	Insulated Limited Partners	0	0

**Bain Capital Partners (CC) IX, L.P.**, which controls Bain Capital (CC) IX, L.P., is controlled as follows:

	(1)	(2)	(3)	(4)	(5)
1.	Bain Capital Partners (CC) IX, L.P.	U.S.	--	--	--
2.	Bain Capital Investors, LLC c/o Bain Capital Investors, LLC	U.S.	General Partner	100	32.5
3.	Limited Partners	--	Limited Partners <sup>6</sup>	0	0

**Bain Capital Investors, LLC**, which controls Bain Capital Partners (CC) IX, L.P. is controlled as follows:

	(1)	(2)	(3)	(4) <sup>7</sup>	(5)
1.	Bain Capital Investors, LLC	U.S.	--	--	--
2.	Steven W. Barnes c/o Bain Capital Investors, LLC	U.S.	Managing Director, Member	14.3	4.6
3.	Joshua Bekenstein c/o Bain Capital Investors, LLC	U.S.	Managing Director, Member	14.3	4.6
4.	John P. Connaughton c/o Bain Capital Investors, LLC	U.S.	Managing Director, Member	14.3	4.6
5.	Ian K. Loring c/o Bain Capital Investors, LLC	U.S.	Managing Director, Member	14.3	4.6
6.	Philip H. Loughlin, IV c/o Bain Capital Investors, LLC	U.S.	Managing Director, Member	14.3	4.6
7.	Stephen G. Pagliuca c/o Bain Capital Investors, LLC	U.S.	Managing Director, Member	14.3	4.6
8.	Michael D. Ward c/o Bain Capital Investors, LLC	U.S.	Managing Director, Member	14.3	4.6

<sup>6</sup> The limited partners of Bain Capital Partners (CC) IX, L.P. are individuals identified as managing directors or members of Bain Capital Investors, LLC, related entities such as family trusts established by such individuals, and investment funds created for the benefit of employees of affiliates of Bain Capital Investors, LLC.

<sup>7</sup> Investment and disposition decisions by Bain Capital Investors, LLC are made by a majority vote of the 7 members, each of whom has a single vote, which equates currently to a voting interest with respect to such investment or disposition decisions of approximately 14.3% of the total vote. In the aggregate, these members own 100% of the ownership interests in the limited liability company.

**Thomas H. Lee Equity Fund VI, L.P.**, which holds a 50% interest in Clear Channel Capital IV, LLC, is controlled as follows:

	(1) <sup>8</sup>	(2)	(3)	(4)	(5)
1.	Thomas H. Lee Equity Fund VI, L.P.	U.S.	--	--	--
2.	THL Equity Advisors VI, LLC	U.S.	General Partner	100	7.6
3.	Insulated Limited Partners	U.S.	Insulated Limited Partners	0	0

**THL Equity Advisors VI, LLC**, which controls Thomas H. Lee Equity Fund VI, L.P., is controlled as follows:

	(1)	(2)	(3)	(4)	(5)
1.	THL Equity Advisors VI, LLC	U.S.	--	--	--
2.	Thomas H. Lee Partners, L.P.	U.S.	Sole Member	100	7.6

**Thomas H. Lee Partners, L.P.**, which controls THL Equity Advisors VI, LLC, is controlled as follows:

	(1)	(2)	(3) <sup>9</sup>	(4)	(5)
1.	Thomas H. Lee Partners, L.P.	U.S.	--	--	--
2.	Thomas H. Lee Advisors, LLC	U.S.	General Partner	100	7.6
3.	Todd M. Abbrecht	U.S.	Limited Partner	0	0
4.	Charles A. Brizius	U.S.	Limited Partner	0	0
5.	Anthony J. DiNovi	U.S.	Limited Partner	0	0
6.	Thomas M. Hagerty	U.S.	Limited Partner	0	0
7.	Scott L. Jaeckel	U.S.	Limited Partner	0	0
8.	Seth W. Lawry	U.S.	Limited Partner	0	0
9.	Soren L. Oberg	U.S.	Limited Partner	0	0
10.	Scott M. Sperling	U.S.	Limited Partner	0	0
11.	Kent R. Weldon	U.S.	Limited Partner	0	0
12.	Alex J. Alexandrov	U.S.	Limited Partner	0	0
13.	Mark Benaquista	U.S.	Limited Partner	0	0
14.	Beverly A. Berman	U.S.	Limited Partner	0	0
15.	Michael P. Borom	U.S.	Limited Partner	0	0
16.	Julia B. Donnelly	U.S.	Limited Partner	0	0
17.	Joshua D. Bresler	U.S.	Limited Partner	0	0
18.	Richard J. Bressler	U.S.	Limited Partner	0	0
19.	James C. Carlisle	U.S.	Limited Partner	0	0
20.	Margaret W. Covell	U.S.	Limited Partner	0	0
21.	Alexandra L. DeLaite	U.S.	Limited Partner	0	0
22.	Laura A. Grattan	U.S.	Limited Partner	0	0

<sup>8</sup> The address for each person or entity listed in column 1 of each of the charts below, other than the insulated limited partners or members, is c/o Thomas H. Lee Partners, L.P. 100 Federal Street Boston, MA 02110.

<sup>9</sup> The limited partners of Thomas H. Lee Partners, L.P. also include trusts or family limited partnerships established as estate planning vehicles by individuals who are listed in the table as limited partners of this entity.

	(1)	(2)	(3) <sup>9</sup>	(4)	(5)
23.	Douglas A. Haber	U.S.	Limited Partner	0	0
24.	Jesse Hermann	U.S.	Limited Partner	0	0
25.	Charles P. Holden	U.S.	Limited Partner	0	0
26.	Daniel G. Jones	U.S.	Limited Partner	0	0
27.	Uttam Kumbhat	U.S.	Limited Partner	0	0
28.	James D. Martin	U.S.	Limited Partner	0	0
29.	Pericles G. Mazarakis	U.S.	Limited Partner	0	0
30.	Joshua M. Nelson	U.S.	Limited Partner	0	0
31.	Joseph F. Pesce	U.S.	Limited Partner	0	0
32.	Ganesh B. Rao	U.S.	Limited Partner	0	0
33.	Stephanie S. Stamos	U.S.	Limited Partner	0	0
34.	Jeff T. Swenson	U.S.	Limited Partner	0	0
35.	Gregory A. White	U.S.	Limited Partner	0	0
36.	Shari H. Wolkon	U.S.	Limited Partner	0	0
37.	Erik J. Zimmer	U.S.	Limited Partner	0	0
38.	John McClellan	U.S.	Limited Partner	0	0
39.	Vivek Sharma	U.S.	Limited Partner	0	0
40.	Scott A. Schoen	U.S.	Limited Partner	0	0
41.	George R. Taylor	U.S.	Limited Partner	0	0
42.	Justin Roberts	U.S.	Limited Partner	0	0
43.	Megan Melican	U.S.	Limited Partner	0	0
44.	Douglas H. Vandenberg	U.S.	Limited Partner	0	0
45.	Insulated Limited Partners	--	Insulated Limited Partners	0	0

**Thomas H. Lee Advisors, LLC**, which controls Thomas H. Lee Partners, L.P., is controlled as follows:

	(1)	(2)	(3)	(4) <sup>10</sup>	(5)
1.	Thomas H. Lee Advisors, LLC	U.S.	--	--	--
2.	THL Holdco, LLC	U.S.	Managing Member	100	32.8
3.	Todd M. Abbrecht	U.S.	Member	0	0
4.	Charles A. Brizius	U.S.	Member	0	0
5.	Anthony J. DiNovi	U.S.	Member	0	0
6.	Thomas M. Hagerty	U.S.	Member	0	0
7.	Scott A. Jaeckel	U.S.	Member	0	0
8.	Seth W. Lawry	U.S.	Member	0	0
9.	Soren L. Oberg	U.S.	Member	0	0
10.	Scott M. Sperling	U.S.	Member	0	0
11.	Kent R. Weldon	U.S.	Member	0	0
12.	Alex J. Alexandrov	U.S.	Member	0	0
13.	Mark Benaquista	U.S.	Member	0	0
14.	Beverly A. Berman	U.S.	Member	0	0
15.	Michael P. Borom	U.S.	Member	0	0
16.	Julia B. Donnelly	U.S.	Member	0	0
17.	Joshua D. Bresler	U.S.	Member	0	0
18.	Richard J. Bressler	U.S.	Member	0	0

<sup>10</sup> The members of Thomas H. Lee Advisors, LLC also include trusts and family limited partnerships established as estate planning vehicles of individuals who are members of Thomas H. Lee Advisors, LLC.

	(1)	(2)	(3)	(4) 10	(5)
19.	James C. Carlisle	U.S.	Member	0	0
20.	Margaret W. Covell	U.S.	Member	0	0
21.	Alexandra L. DeLaite	U.S.	Member	0	0
22.	Laura A. Grattan	U.S.	Member	0	0
23.	Douglas A. Haber	U.S.	Member	0	0
24.	Jesse Hermann	U.S.	Member	0	0
25.	Charles P. Holden	U.S.	Member	0	0
26.	Daniel G. Jones	U.S.	Member	0	0
27.	Uttam Kumbhat	U.S.	Member	0	0
28.	James D. Martin	U.S.	Member	0	0
29.	Pericles G. Mazarakis	U.S.	Member	0	0
30.	Joshua M. Nelson	U.S.	Member	0	0
31.	Joseph F. Pesce	U.S.	Member	0	0
32.	Ganesh B. Rao	U.S.	Member	0	0
33.	Stephanie S. Stamatos	U.S.	Member	0	0
34.	Jeff T. Swenson	U.S.	Member	0	0
35.	Gregory A. White	U.S.	Member	0	0
36.	Shari H. Wolkon	U.S.	Member	0	0
37.	Erik J. Zimmer	U.S.	Member	0	0
38.	John McClellan	U.S.	Member	0	0
39.	Vivek Sharma	U.S.	Member	0	0
40.	Scott A. Schoen	U.S.	Member	0	0
41.	George R. Taylor	U.S.	Member	0	0
42.	Justin Roberts	U.S.	Member	0	0
43.	Megan Melican	U.S.	Member	0	0
44.	Douglas H. Vandenberg	U.S.	Member	0	0
45.	Insulated Members	--	Members	0	0

**THL Holdco, LLC**, which controls Thomas H. Lee Advisors, LLC, is controlled as follows:

	(1)	(2)	(3)	(4)	(5)
1.	THL Holdco, LLC	U.S.	--	--	--
2.	Todd M. Abbrecht	U.S.	Member	16.6	5.4
3.	Anthony J. DiNovi	U.S.	Member	16.6	5.4
4.	Thomas M. Hagerty	U.S.	Member	16.6	5.4
5.	Soren L. Oberg	U.S.	Member	16.6	5.4
6.	Scott M. Sperling	U.S.	Member	16.6	5.4
7.	Kent R. Weldon	U.S.	Member	16.6	5.4

Figure 1

### Ownership Structure

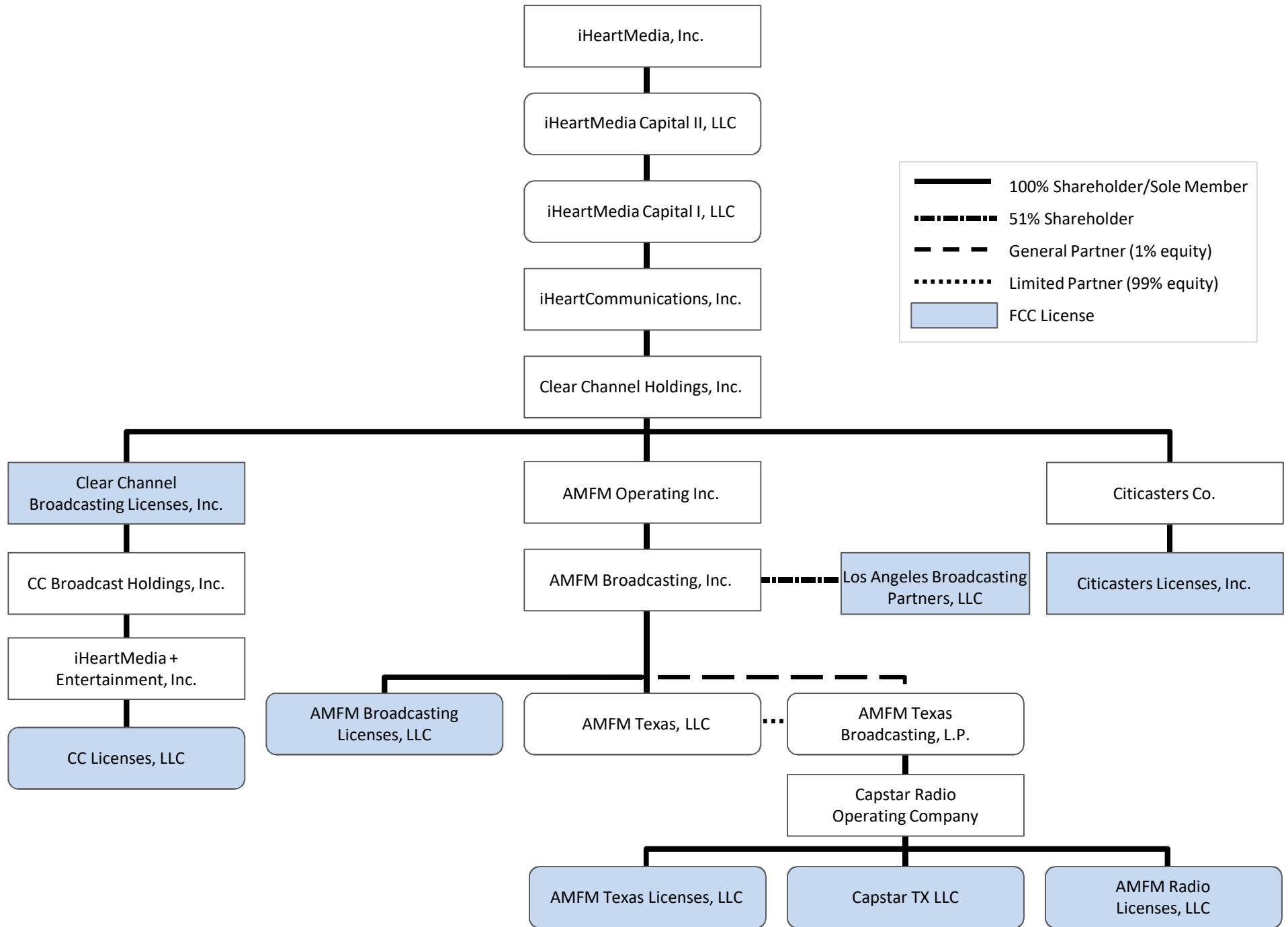
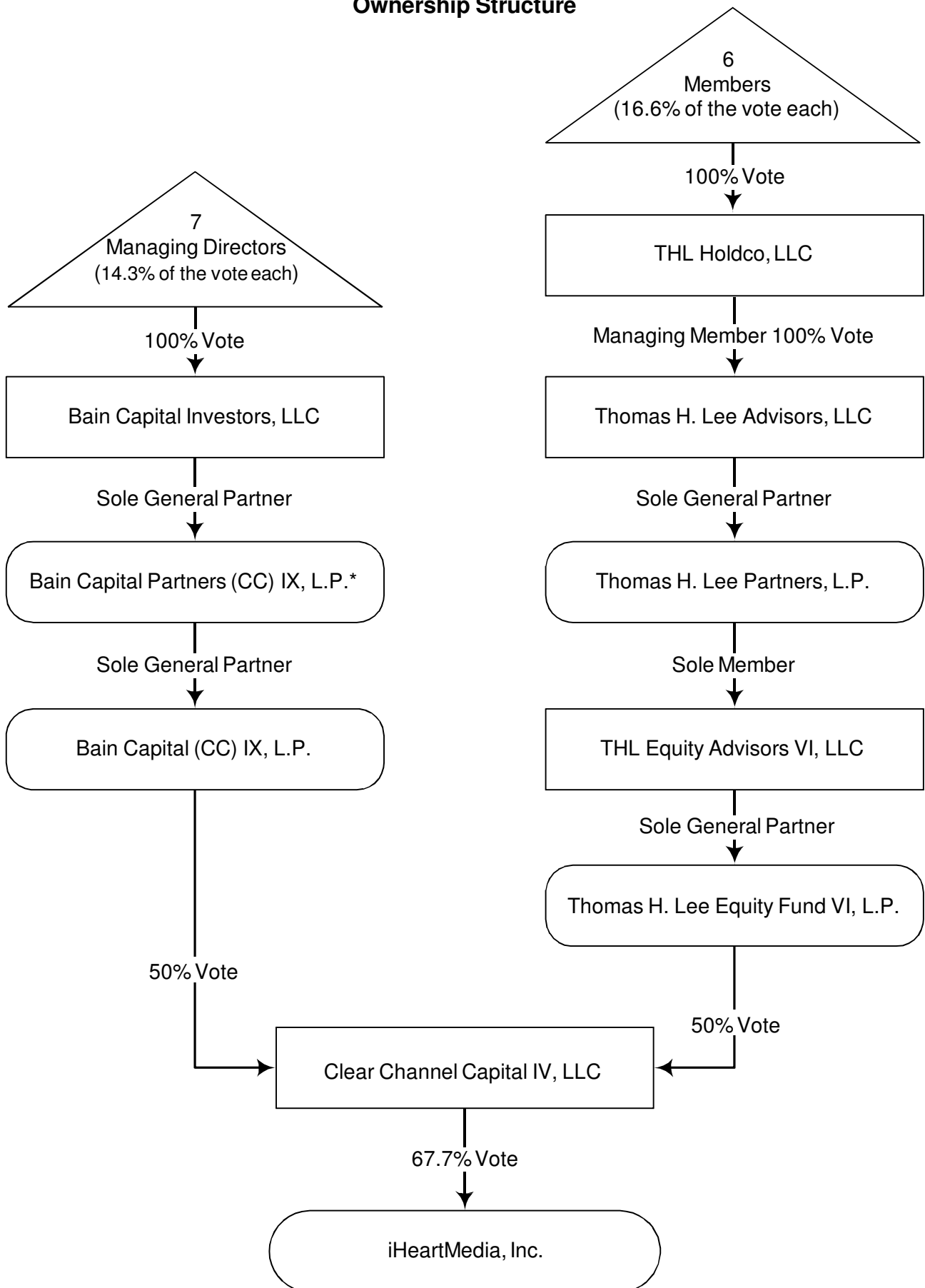


Figure 2

# iHeartMedia, Inc. Ownership Structure



\*The limited partners of this entity are individuals identified as managing directors or members of Bain Capital Investors, LLC, related entities such as family trusts established by such individuals, and investment funds created for the benefit of employees of affiliates of Bain Capital Investors, LLC.