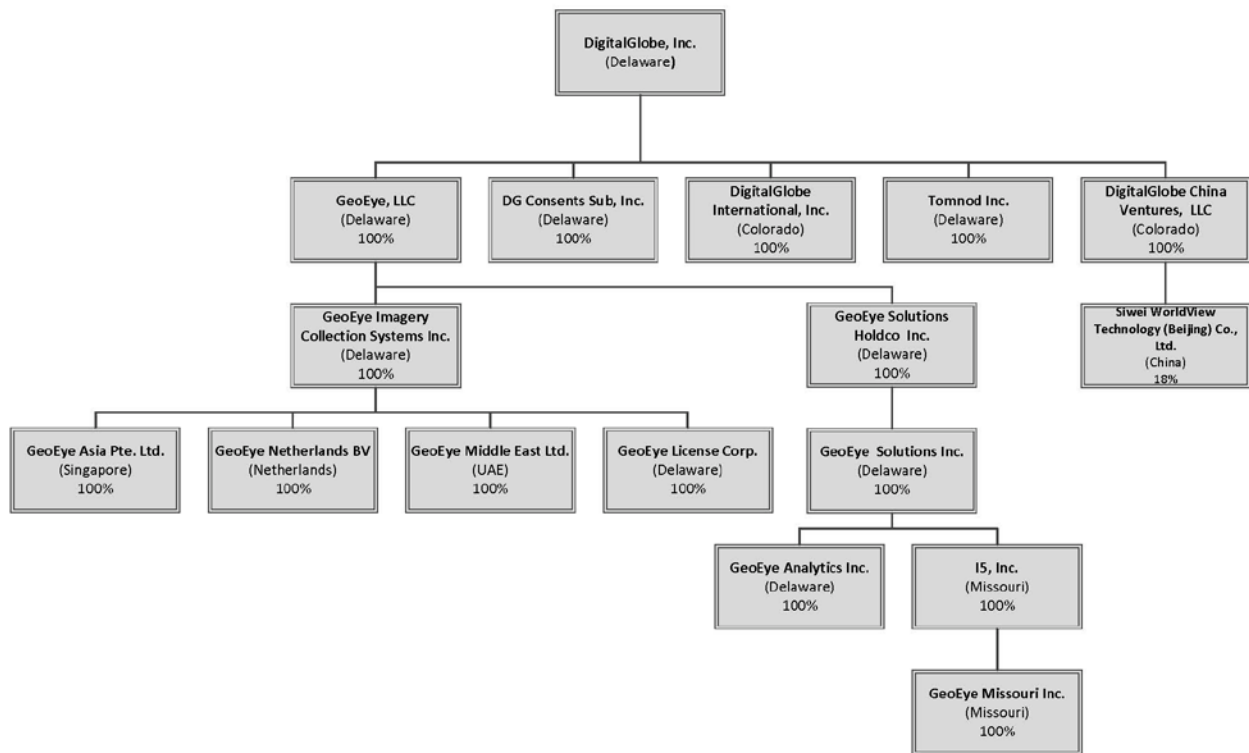


Statement Identifying Nature and Extent of Control

The following organizational diagram identifies the nature and extent of control of the assignee, DG Consents Sub, Inc.

DigitalGlobe, Inc. Corporate Structure



As depicted above, DG Consents Sub, Inc. is directly controlled by DigitalGlobe, Inc., a Delaware corporation, with an address of 1601 Dry Creek Drive, Longmont, Colorado 80503. The proposed assignor, Universal Space Network Inc., is a private corporation currently acting as a subcontractor to DigitalGlobe, Inc. The primary business of DigitalGlobe, Inc. is the provision of earth imagery products and services composed of daily imagery from its high-resolution satellites and an archive of high- resolution digital imagery products.

Controlling Company Ownership Information

Wellington Management Company, LLP, (“Wellington”) a Massachusetts limited liability partnership, holds a 14 percent voting interest (which equates to a 14 percent equity interest) in DigitalGlobe, Inc. The address for Wellington is 280 Congress Street, Boston, Massachusetts 02210-1023. No other entity or individual owns a 10 percent or greater interest in DigitalGlobe, Inc.