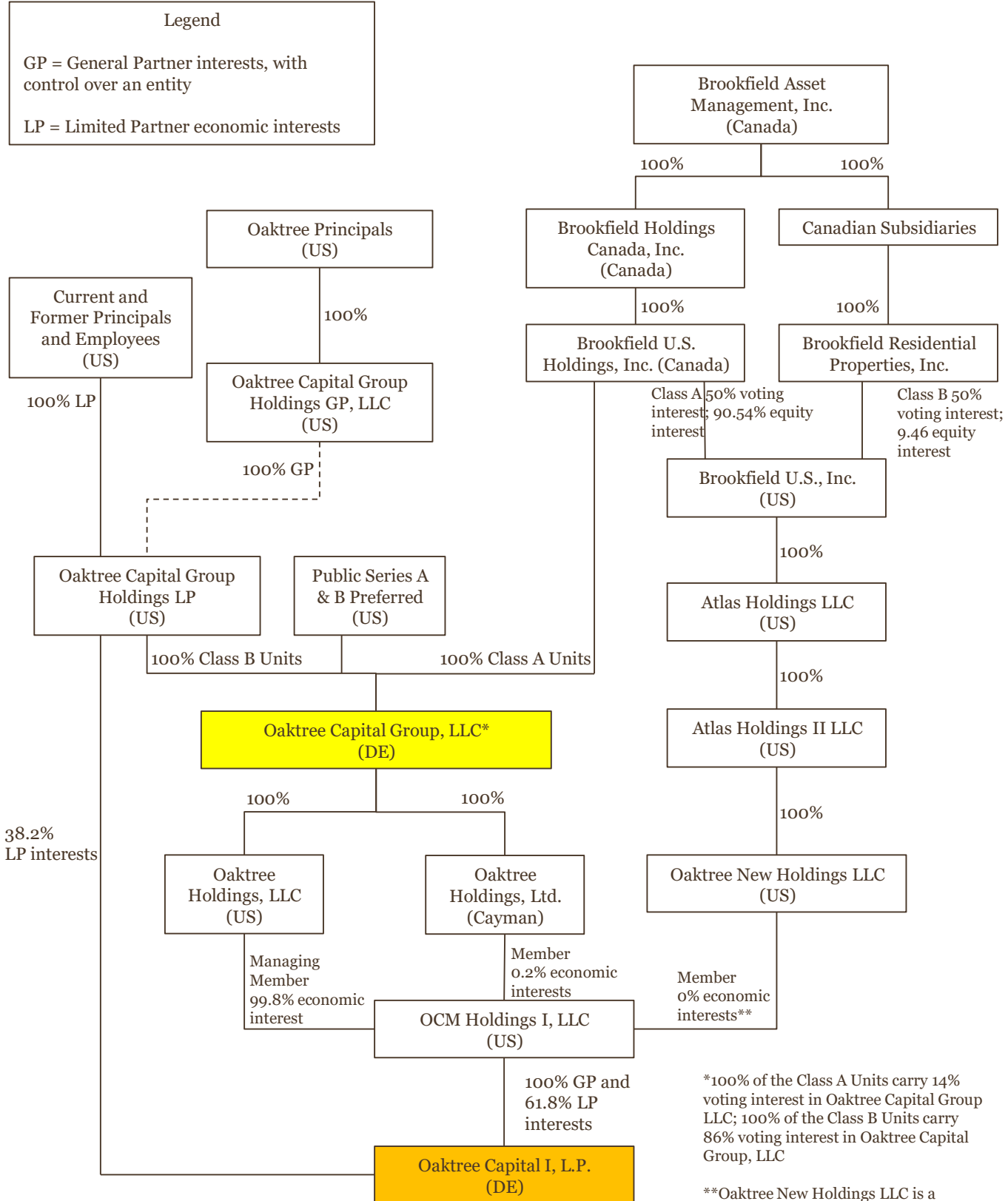


# Oaktree Capital I, L.P.

**Legend**

GP = General Partner interests, with control over an entity

LP = Limited Partner economic interests



\*100% of the Class A Units carry 14% voting interest in Oaktree Capital Group LLC; 100% of the Class B Units carry 86% voting interest in Oaktree Capital Group, LLC

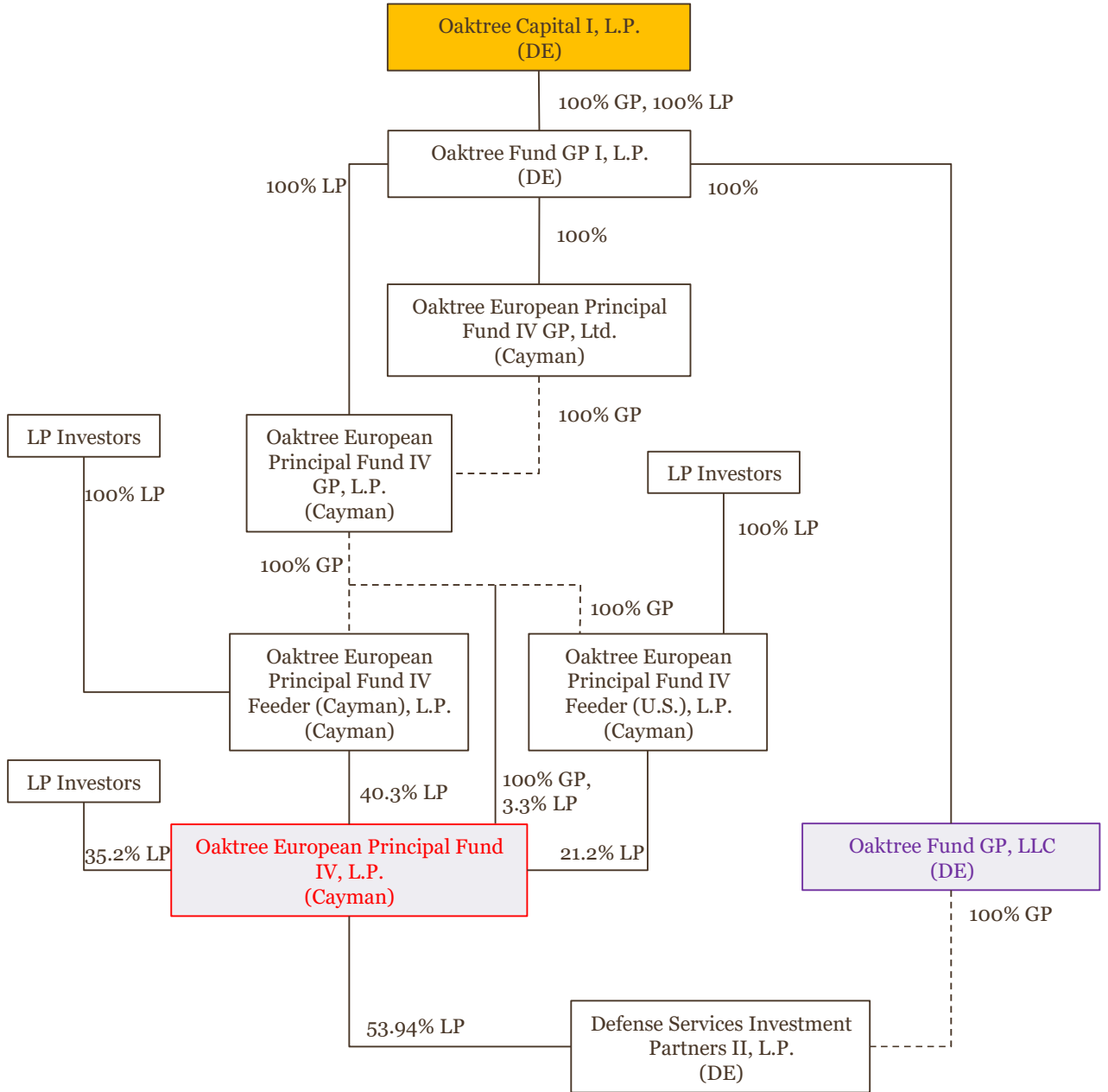
\*\*Oaktree New Holdings LLC is a member of OCM Holdings I, LLC, with 0% economic interests. Oaktree New Holdings LLC is only entitled to distribution rights for specified investments of OCM Holdings I, LLC that meet certain tax criteria.

# Oaktree European Principal Fund IV, L.P. (DSIP II)

**Legend**

GP = General Partner interests, with control over an entity

LP = Limited Partner economic interests

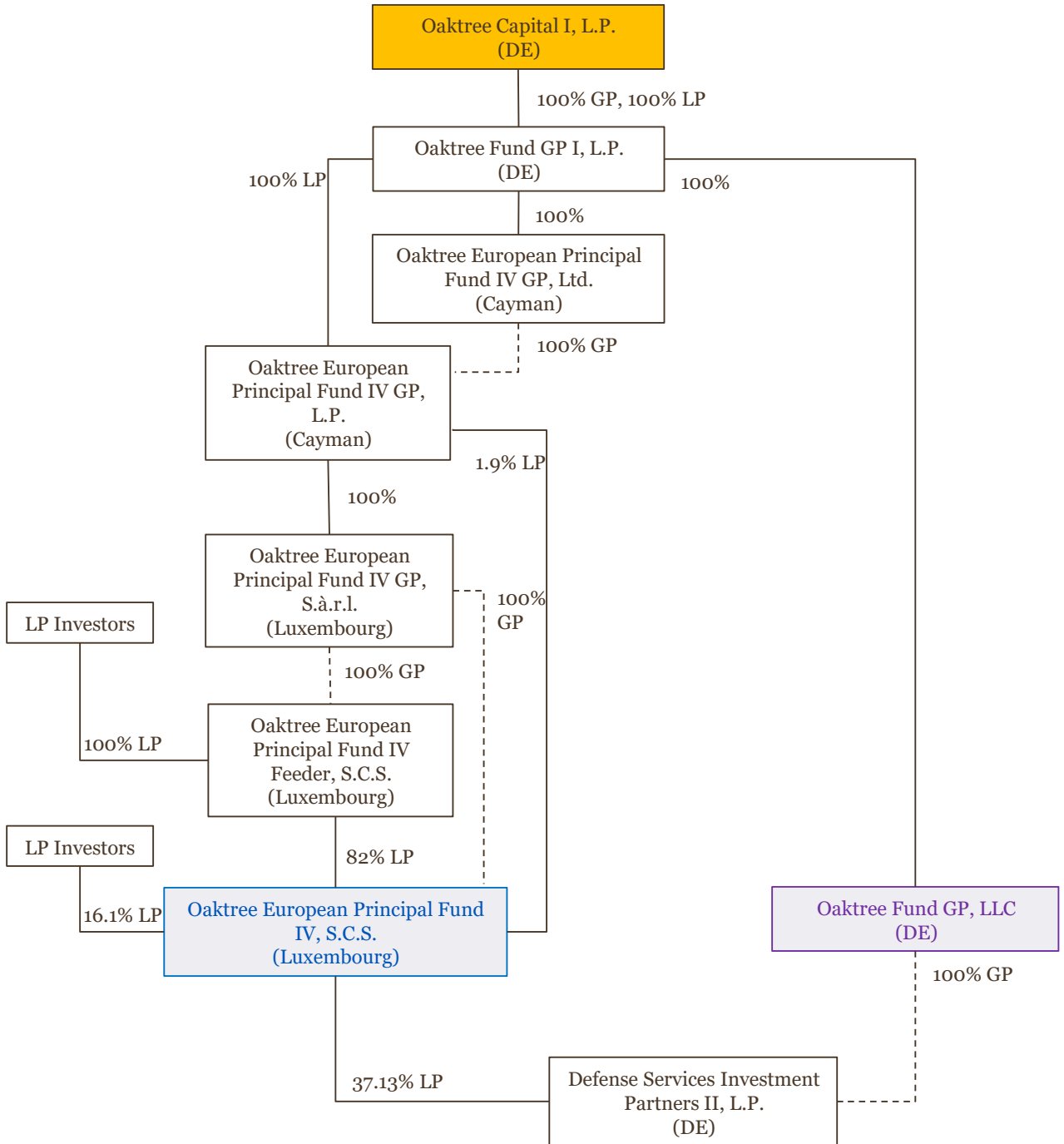


# Oaktree European Principal Fund IV, S.C.S. (DSIP II)

**Legend**

GP = General Partner interests, with control over an entity

LP = Limited Partner economic interests

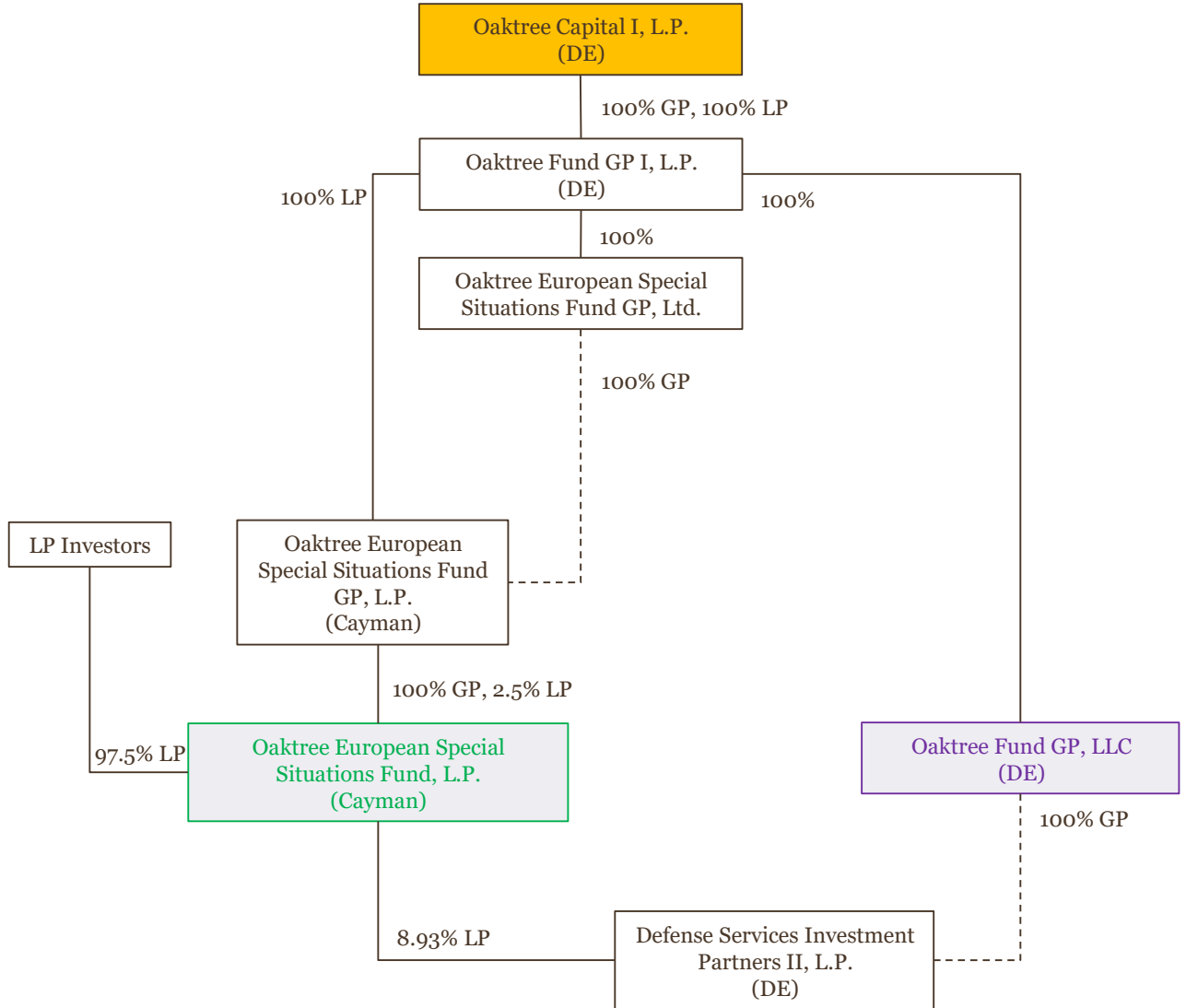


# Oaktree European Special Situations Fund, L.P. (DSIP II)

## Legend

GP = General Partner interests, with control over an entity

LP = Limited Partner economic interests

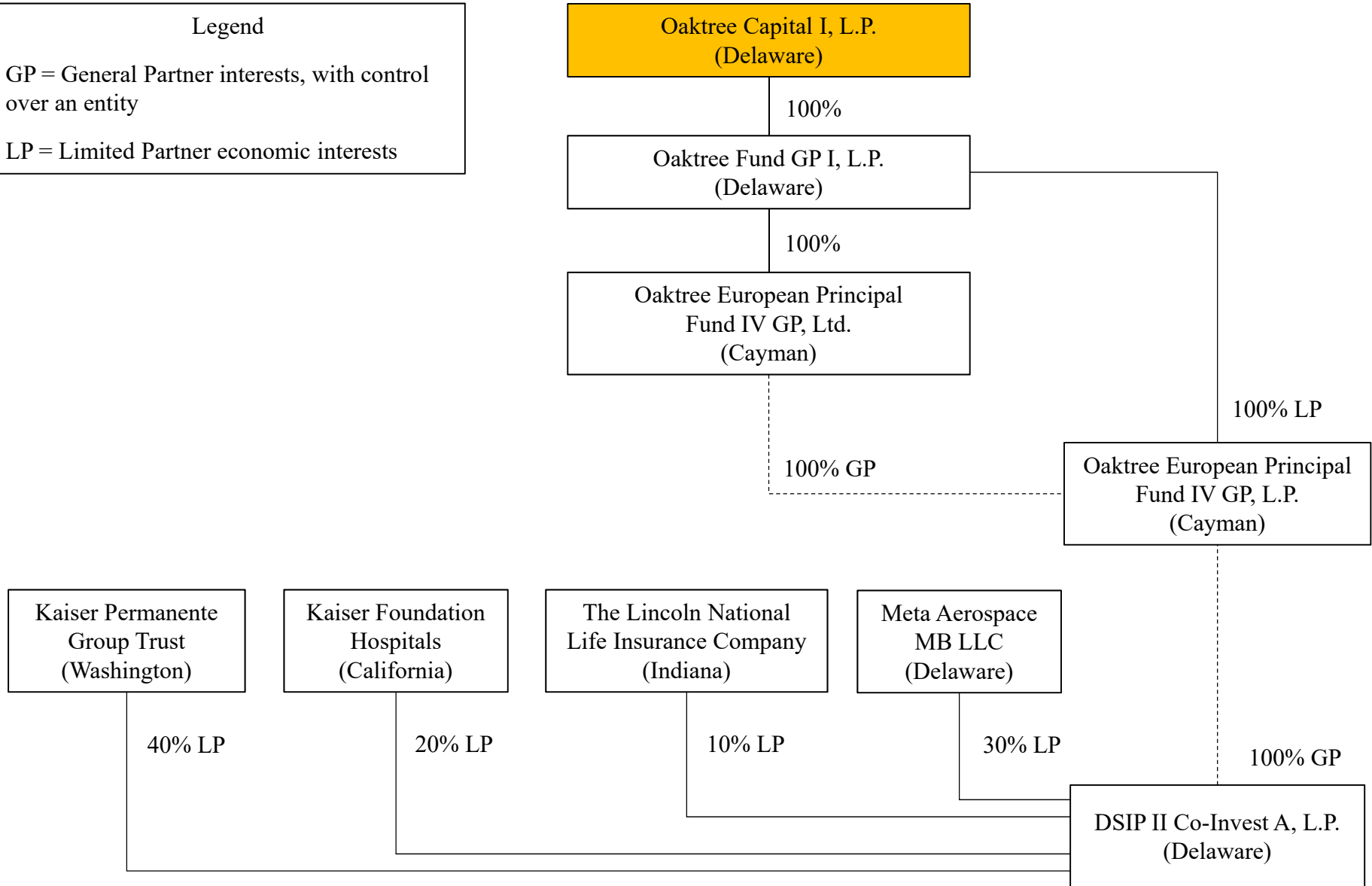


# DSIP II Co-Invest A, L.P.

Legend

GP = General Partner interests, with control over an entity

LP = Limited Partner economic interests



\*Principal place of business (“PPB”) for Kaiser Permanente Group Trust and Kaiser Foundation Hospitals is California. PPB for The Lincoln National Life Insurance Company is Indiana. PPB for Meta Aerospace MB LLC is New York.

# Meta Aerospace, LLC

