

S2807 SAT-STA-20100511-00097 IB2010001500  
SES Americom, Inc.

Date & Time Filed: May 11 2010 11:05:33:913AM  
File Number: SAT-STA-20100511-00097  
Callsign:



**GRANTED** ★  
International Bureau

File # SAT-STA-20100511-00097

Call Sign S2807 Grant Date 05/26/10

(or other identifier)

Term Dates period of  
From 05/27/10 To: 30 days

Approved by OMB  
3060-0678

*Stephen J. Duall*

Stephen J. Duall  
Chief, Satellite Policy Branch

\*subject to conditions

FEDERAL COMMUNICATIONS COMMISSION  
APPLICATION FOR SPACE STATION SPECIAL TEMPORARY AUTHORITY

FOR OFFICIAL USE ONLY

APPLICANT INFORMATION

Enter a description of this application to identify it on the main menu:  
S2807 (SES-1) STA Request to Drift and Operate at 131.3 WL


1. Applicant

<b>Name:</b>	SES Americom, Inc.	<b>Phone Number:</b>	(202) 478-7137
<b>DBA Name:</b>		<b>Fax Number:</b>	(202) 478-7101
<b>Street:</b>	2001 L Street, NW Suite 800	<b>E-Mail:</b>	daniel.mah@ses.com
<b>City:</b>	Washington	<b>State:</b>	DC
<b>Country:</b>	USA	<b>Zipcode:</b>	20036 -
<b>Attention:</b>	Daniel C.H. Mah		

**Attachment to Grant**  
**IBFS File No. SAT-STA-20100511-00097**  
**Call Sign S2807**  
**May 26, 2010**

The request of SES Americom, Inc. (SES Americom) for special temporary authority, IBFS File No. SAT-STA-20100511-00097, is granted. Accordingly, SES Americom is authorized, for a period of 30 days commencing May 27, 2010, to provide Fixed-Satellite Service (FSS) via the SES-1 space station (Call Sign S2807) at the 131.3° W.L. orbital location in the 3700-4200 MHz (space-to-Earth) and 5925-6425 MHz (Earth-to-space) frequency bands, and to conduct Telemetry, Tracking, and Telecommand (TT&C) operations in the 11.7 -12.2 GHz (space-to-Earth) and 14.0-14.5 GHz (Earth-to-space) at this location and during the drift from the 131.3° W.L. orbital location to SES-1's assigned 101 ° W.L. orbital location. SES Americom is also authorized to conduct TT&C in the 3700-4200 MHz (space-to-Earth) and 5925-6425 MHz (Earth-to-space) frequency bands during the drift of the SES-1 space station from the 131.3° W.L. orbital location to 101 ° W.L. This authorization shall be in accordance with the technical specifications set forth in SES Americom's application, Federal Communication Commission (Commission) rules, and the following conditions:

1. All operations during the drift from 131.3° W.L. to 101 ° W.L. shall be on an unprotected and non-harmful interference basis, *i.e.*, SES Americom shall not cause harmful interference to, and shall not claim protection from, interference caused to it by any other lawfully operating station.
2. In the event of any harmful interference during SES-1's drift between the 131.3° W.L. and 101° W.L. orbital locations, SES Americom shall cease operations immediately upon notification of such interference, and shall inform the Commission, in writing, immediately of such an event.
3. During the drift between the 131.3° W.L. and 101° W.L. orbital locations, SES Americom may not operate SES-1's communications payload.
4. While at the 131.3° W.L. orbital location, SES Americom may operate the SES-1 spacecraft with an east/west longitudinal station-keeping tolerance of +/- 0.2 degrees.
5. This action is issued pursuant to Section 0.261 of the Commission's rules on delegated authority, 47 C.F.R. § 0.261, and is effective immediately.

 <b>GRANTED *</b> International Bureau <i>*subject to conditions</i>	File # <u>SAT-STA-20100511-00097</u>
	Call Sign <u>S2807</u> Grant Date <u>05/26/10</u>
	(or other identifier)
	Term Dates <u>period of 30 days</u>
	From <u>05/27/10</u> To: <u>                    </u>
Approved: <u>Stephen J. Duall</u> Stephen J. Duall Chief, Satellite Policy Branch	

<b>2. Contact</b>			
<b>Name:</b>	Karis A. Hastings	<b>Phone Number:</b>	(202) 637-5767
<b>Company:</b>	Hogan Lovells US LLP	<b>Fax Number:</b>	(202) 637-5910
<b>Street:</b>	555 Thirteenth Street, NW	<b>E-Mail:</b>	karis.hastings@hoganlovells.com
<b>City:</b>	Washington	<b>State:</b>	DC
<b>Country:</b>	USA	<b>Zipcode:</b>	20004 -1109
<b>Attention:</b>		<b>Relationship:</b>	
(If your application is related to an application filed with the Commission, enter either the file number or the IB Submission ID of the related application. Please enter only one.)			
3. Reference File Number or Submission ID			
4a. Is a fee submitted with this application?			
<input checked="" type="radio"/> If Yes, complete and attach FCC Form 159. If No, indicate reason for fee exemption (see 47 C.F.R. Section 1.1114).			
<input type="radio"/> Governmental Entity <input type="radio"/> Noncommercial educational licensee			
<input type="radio"/> Other (please explain):			
4b. Fee Classification CRY - Space Station (Geostationary)			
5. Type Request			
<input type="radio"/> Change Station Location <input type="radio"/> Extend Expiration Date <input checked="" type="radio"/> Other			
6. Temporary Orbit Location			7. Requested Extended Expiration Date

8. Description (If the complete description does not appear in this box, please go to the end of the form to view it in its entirety.)

SES Americom, Inc. seeks special temporary authority to locate satellite SES-1, call sign S2807, at 131.3 WL (+/- 0.2 degrees) and operate it there in the C-band for a period of up to seven days starting no later than May 27, 2010.

9. By checking Yes, the undersigned certifies that neither applicant nor any other party to the application is subject to a denial of Federal benefits that includes FCC benefits pursuant to Section 5301 of the Anti-Drug Act of 1988, 21 U.S.C. Section 862, because of a conviction for possession or distribution of a controlled substance. See 47 CFR 1.2002(b) for the meaning of "party to the application"; for these purposes. Yes  No

10. Name of Person Signing  
Daniel C.H. Mah

11. Title of Person Signing  
Regulatory Counsel

12. Please supply any need attachments.

Attachment 1: Attachment 1

Attachment 2:

Attachment 3:

WILLFUL FALSE STATEMENTS MADE ON THIS FORM ARE PUNISHABLE BY FINE AND / OR IMPRISONMENT  
(U.S. Code, Title 18, Section 1001), AND/OR REVOCATION OF ANY STATION AUTHORIZATION  
(U.S. Code, Title 47, Section 312(a)(1)), AND/OR FORFEITURE (U.S. Code, Title 47, Section 503).

**FCC NOTICE REQUIRED BY THE PAPERWORK REDUCTION ACT**

The public reporting for this collection of information is estimated to average 2 hours per response, including the time for reviewing instructions, searching existing data sources, gathering and maintaining the required data, and completing and reviewing the collection of information. If you have any comments on this burden estimate, or how we can improve the collection and reduce the burden it causes you, please write to the Federal Communications Commission, AMD-PERM, Paperwork Reduction Project (3060-0678), Washington, DC 20554. We will also accept your comments regarding the Paperwork Reduction Act aspects of this collection via the Internet if you send them to [PRA@fcc.gov](mailto:PRA@fcc.gov). PLEASE DO NOT SEND COMPLETED FORMS TO THIS ADDRESS.

Remember – You are not required to respond to a collection of information sponsored by the Federal government, and the government may not conduct or sponsor this collection, unless it displays a currently valid OMB control number or if we fail to provide you with this notice. This collection has been assigned an OMB control number of 3060-0678.

**THE FOREGOING NOTICE IS REQUIRED BY THE PAPERWORK REDUCTION ACT OF 1995, PUBLIC LAW 104-13, OCTOBER 1, 1995, 44 U.S.C. SECTION 3507.**

**Before the  
FEDERAL COMMUNICATIONS COMMISSION  
Washington, D.C. 20554**

In the Matter of Application of	)	
	)	
SES AMERICOM, INC.	)	File No. SAT-STA-_____
	)	Call Sign S2807
For Special Temporary Authority to	)	
Operate SES-1 at 131.3° W.L. (+/- 0.2 degrees)	)	

*EXPEDITED ACTION REQUESTED*

**APPLICATION OF SES AMERICOM, INC.**

SES Americom, Inc. (“SES Americom,” doing business as “SES WORLD SKIES”<sup>1</sup>) hereby respectfully requests special temporary authority to locate the SES-1 satellite at 131.3° W.L. (+/- 0.2 degrees) and operate it there in the C-band at any time during a period of up to seven days starting no later than May 27, 2010.<sup>2</sup> Grant of the requested authority will serve the public interest by facilitating SES WORLD SKIES’ attempts to mitigate the effects of potential interference to operations on its AMC-11 spacecraft at 131° W.L. that could result from the PanAmSat Licensee Corp. (“PanAmSat”) Galaxy 15 satellite (call sign S2387), which suffered an anomaly and is drifting in an uncontrolled manner in the direction of AMC-11.

---

<sup>1</sup> On September 7, 2009, SES S.A. announced that the newly integrated operations of its two indirect subsidiaries, New Skies Satellites B.V. and SES Americom would be conducted under a single brand name, SES WORLD SKIES. The new brand name does not affect the underlying legal entities that hold Commission authorizations or U.S. market access rights.

<sup>2</sup> SES WORLD SKIES does not anticipate that it will need to operate SES-1 at 131.3° W.L. (+/- 0.2 degrees) for the full seven days. It is requesting authority to operate SES-1 at that location for up to seven days out of an abundance of caution to address potential contingencies and uncertainty in timing.

SES-1 was launched on April 24, 2010, and is currently undergoing in-orbit testing (“IOT”) at 142.5° W.L. pursuant to Commission authority<sup>3</sup> prior to deployment as a replacement satellite at 101° W.L.<sup>4</sup> SES WORLD SKIES proposes to temporarily stop SES-1 at 131.3° W.L. (+/- 0.2 degrees) during its drift to 101° W.L. from the IOT location, and to operate the satellite’s C-band communications payload while it is stationed at that location.<sup>5</sup> All Tracking, Telemetry, Command, and Monitoring (“TTC&M”) operations during the drift and the temporary stop at 131.3° W.L. (+/- 0.2 degrees) will be conducted in the Ku-band to avoid any possible interference with AMC-11 and Galaxy 15. Representative beam plots for the C-band payload and the Ku-band TTC&M operations from 131.3° W.L. are included herein as Attachment A.

As the Commission is aware, because of an anomaly that occurred on or about April 5, the Galaxy 15 satellite is currently drifting eastward in an uncontrolled manner from its assigned orbital location of 133° W.L. at a very slow but accelerating rate of 0.04-0.1 degrees per day. SES WORLD SKIES understands that PanAmSat has been unable to regain control of Galaxy 15 or to disable the payload on the satellite.<sup>6</sup> As a result, Galaxy 15 is expected to pass through AMC-11’s station-keeping box at 131° W.L. on or about May 31. Because Galaxy 15 operates on the same C-band frequencies as AMC-11, the potential for harmful interference into AMC-11 operations is significant as Galaxy 15 approaches and passes through 131° W.L.

---

<sup>3</sup> See File No. SAT-STA-20100408-00068 (Call Sign S2807), grant-stamped Apr. 23, 2010.

<sup>4</sup> See File Nos. SAT-RPL-20100120-00014 and SAT-AMD-20100309-00040 (Call Sign S2807), grant-stamped Apr. 20, 2010.

<sup>5</sup> The exact orbital location at which SES-1 will operate will vary depending on the relative position of Galaxy 15 and the orbital separation necessary to minimize interference.

<sup>6</sup> See File Nos. SES-STA-20100423-00473 (Call Sign KA275), and SAT-STA-20100426-00084 (Call Sign S2387), both grant-stamped Apr. 29, 2010.

SES WORLD SKIES is exploring a number of different options to address these matters in consultation with its customers and Intelsat. SES WORLD SKIES has already requested temporary authority to operate AMC-11 at up to 0.5 degrees east and west of its assigned 131° W.L. orbital location in order to minimize interference to AMC-11 traffic as Galaxy 15 approaches 131° W.L. To supplement that approach, SES WORLD SKIES is hereby requesting authority to operate SES-1 at 131.3° W.L. (+/- 0.2 degrees) in order to carry AMC-11 traffic as Galaxy 15 departs the 131° W.L. orbital location. Traffic can then be transitioned back to AMC-11 once Galaxy 15 has passed by and there is sufficient separation between the two satellites to ameliorate any interference.

Grant of the requested authority will serve the public interest by enabling SES WORLD SKIES to take these steps, as necessary, to minimize service disruptions for customers on the AMC-11 satellite resulting from interference caused by Galaxy 15. Grant of the requested authority will not adversely affect other authorized operations. SES-1 will not be located at the same orbital location as another satellite or at an orbital location that has an overlapping stationkeeping volume with another satellite. There are no C-band satellites assigned to operate at 131.3° W.L. (+/- 0.2 degrees). The closest C-band spacecraft to the east of AMC-11 is Galaxy 13 at 127° W.L., and to the west is Galaxy 12, which has been deployed to 133° W.L. to carry the traffic previously carried by Galaxy 15.<sup>7</sup> SES WORLD SKIES does not expect that its proposed operations will cause harmful interference to either adjacent satellite and will coordinate the proposed operation of SES-1 with PanAmSat's adjacent operations. The temporary operation of SES-1 at 131.3° W.L. (+/- 0.2 degrees) for a few days also will not significantly impact deployment of replacement capacity at 101° W.L.

---

<sup>7</sup> See File No. SAT-STA-20100408-00070 (Call Sign S2422), grant-stamped Apr. 9, 2010.



SES WORLD SKIES hereby certifies that no party to this application is subject to a denial of federal benefits pursuant to Section 5301 of the Anti-Drug Abuse Act of 1988, 21 U.S.C. § 862.

SES WORLD SKIES waives any claim to the use of any particular frequency or of the electromagnetic spectrum as against the regulatory power of the United States because of the previous use of the same, whether by license or otherwise, and requests an authorization in accordance with this application.

For the foregoing reasons, SES WORLD SKIES seeks temporary authority for a period of up to seven days starting on May 27, 2010, to position SES-1 at 131.3° W.L. (+/- 0.2 degrees) using the spacecraft's Ku-band TTC&M frequencies and to operate the C-band payload on the spacecraft at that location. At the end of this period, SES-1 will recommence its drift to its assigned orbital location of 101° W.L.

Respectfully submitted,

SES AMERICOM, INC.

By: */s/ Daniel C.H. Mah*

Of Counsel  
Karis A. Hastings  
Hogan Lovells US LLP  
555 13<sup>th</sup> Street, N.W.  
Washington, D.C. 20004-1109  
Tel: (202) 637-5600

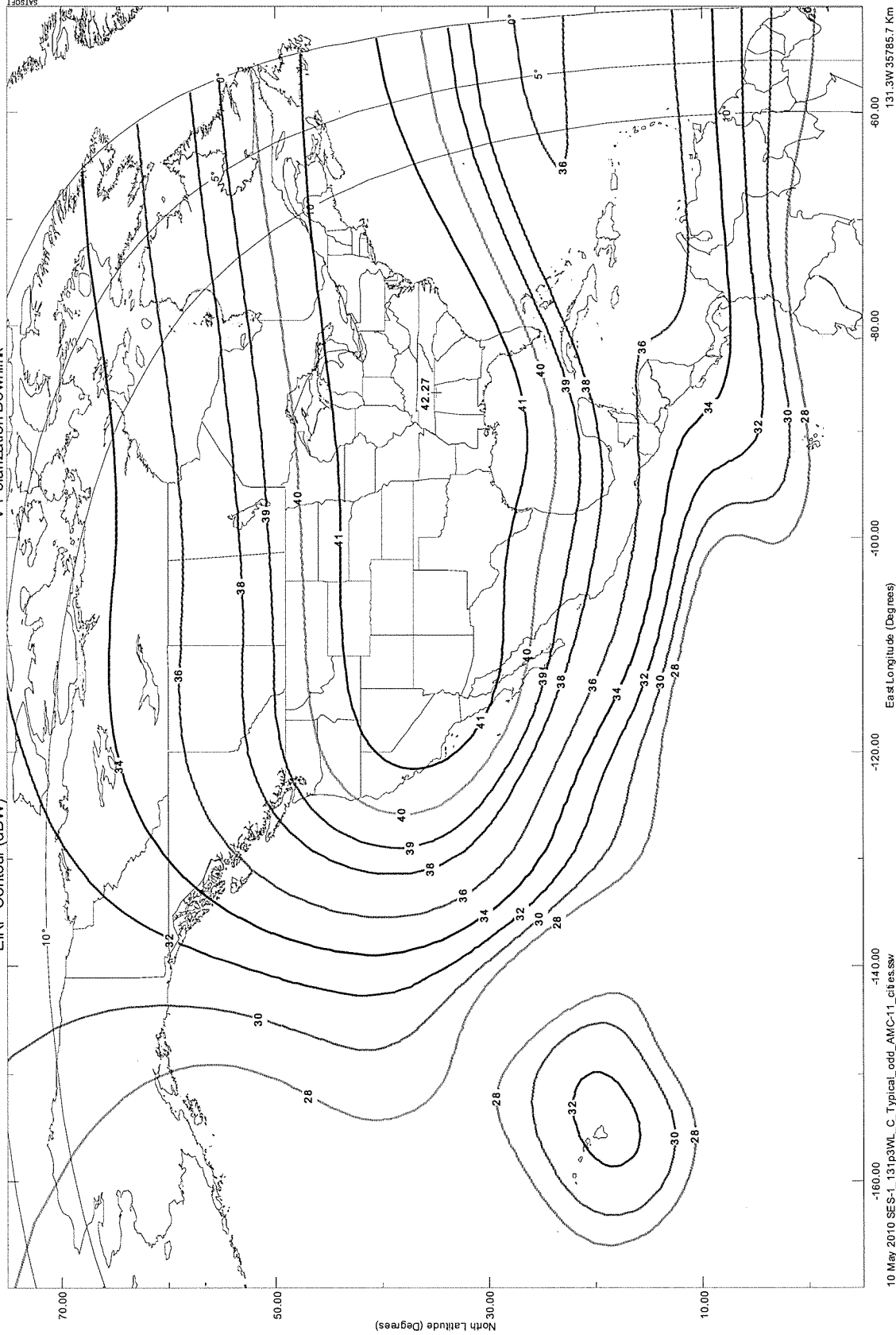
Daniel C. H. Mah  
Regulatory Counsel  
SES Americom, Inc.  
Four Research Way  
Princeton, NJ 08540

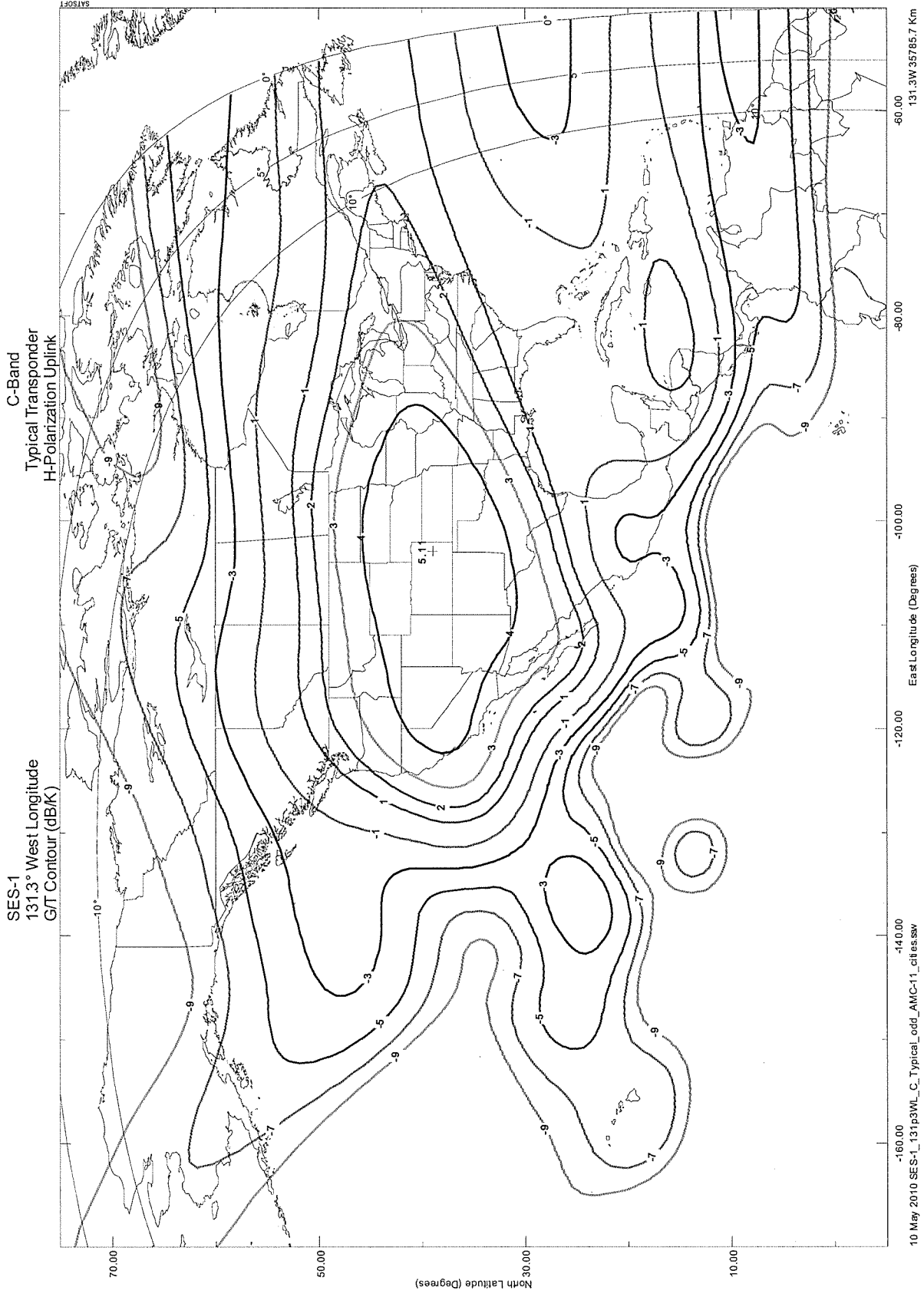
Dated: May 11, 2010

**ATTACHMENT A**

SES-1  
131.3° West Longitude  
EIRP Contour (dBW)

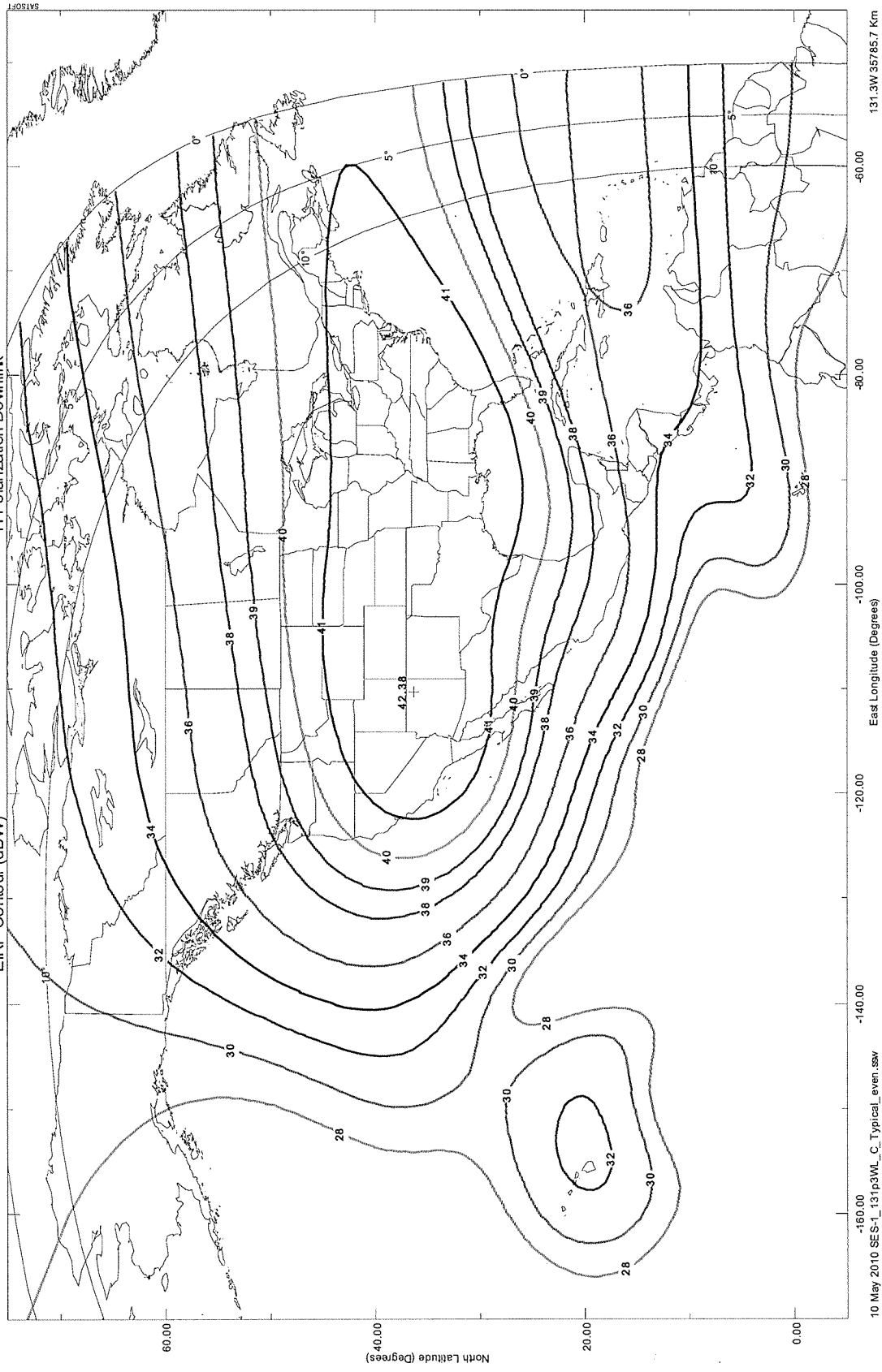
C-Band  
Typical Transponder  
V-Polarization Downlink





SES-1  
131.3° West Longitude  
EIRP Contour (dBW)

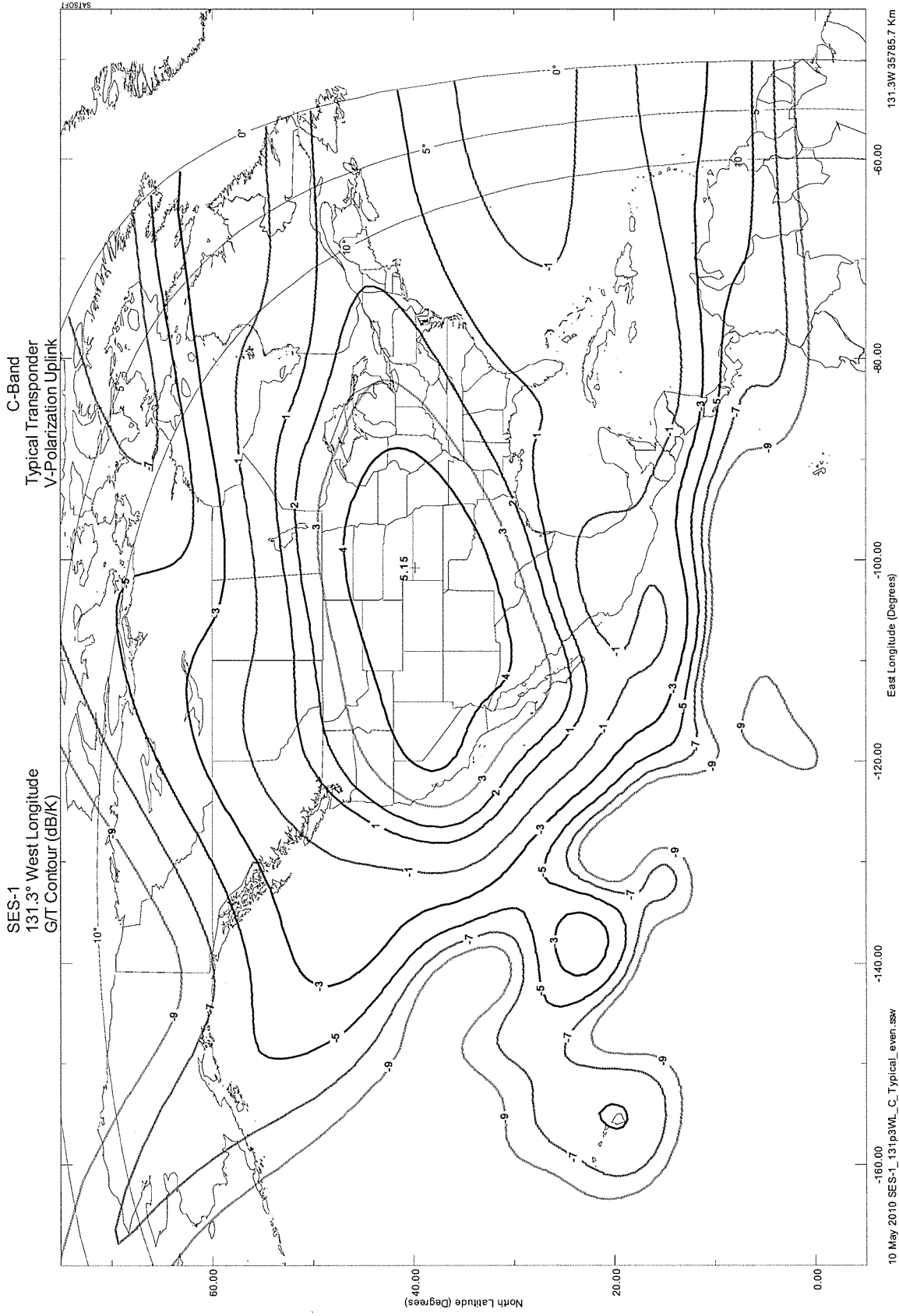
C-Band  
Typical Transponder  
H-Polarization Downlink



10 May 2010 SES-1\_131p3WL\_C\_Typical\_even\_ssw

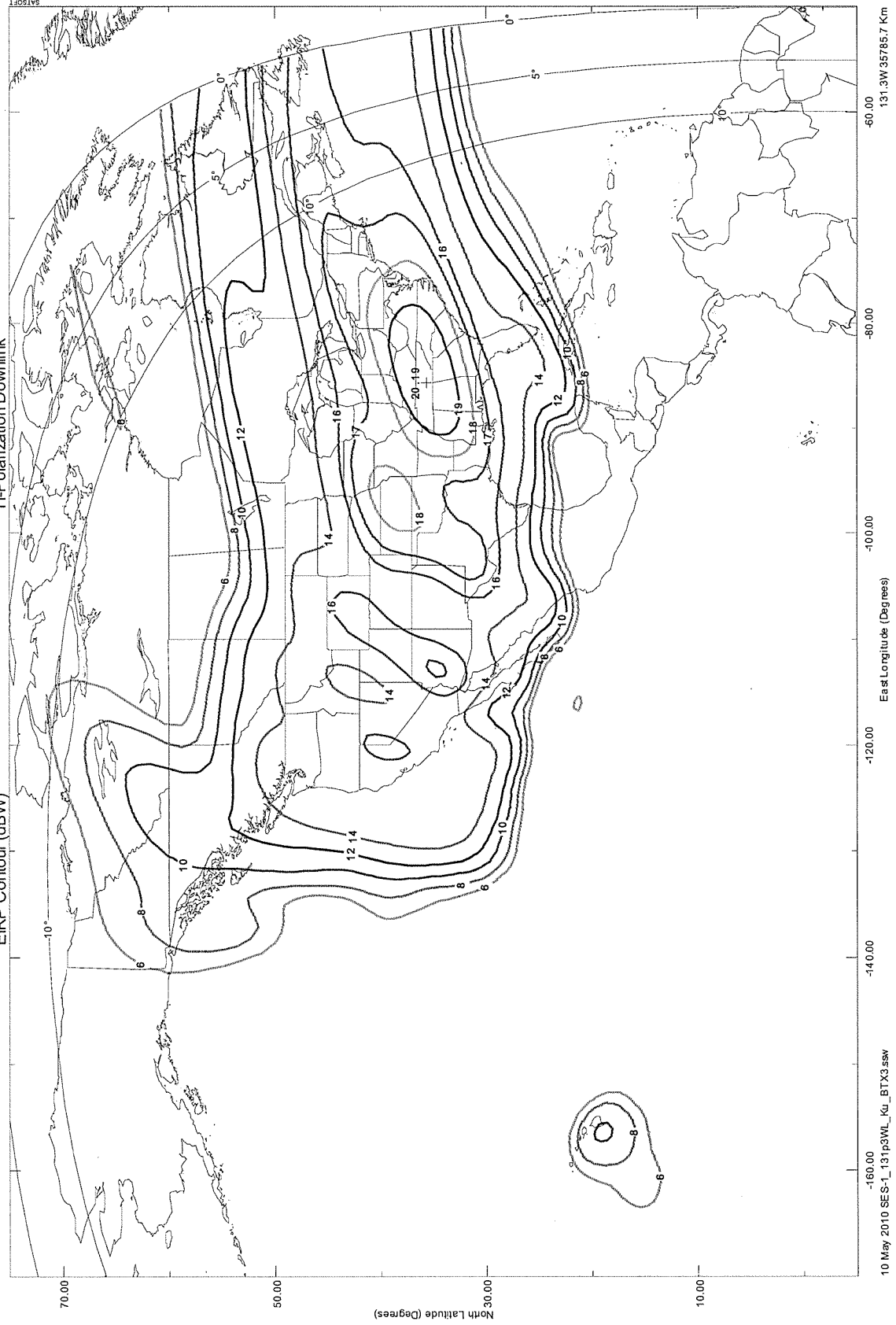
East Longitude (Degrees)

131.3W 35785.7 Km



SES-1  
131.3° West Longitude  
EIRP Contour (dBW)

Ku-Band BTX 03  
Center Frequency 11701.0 MHz  
H-Polarization Downlink



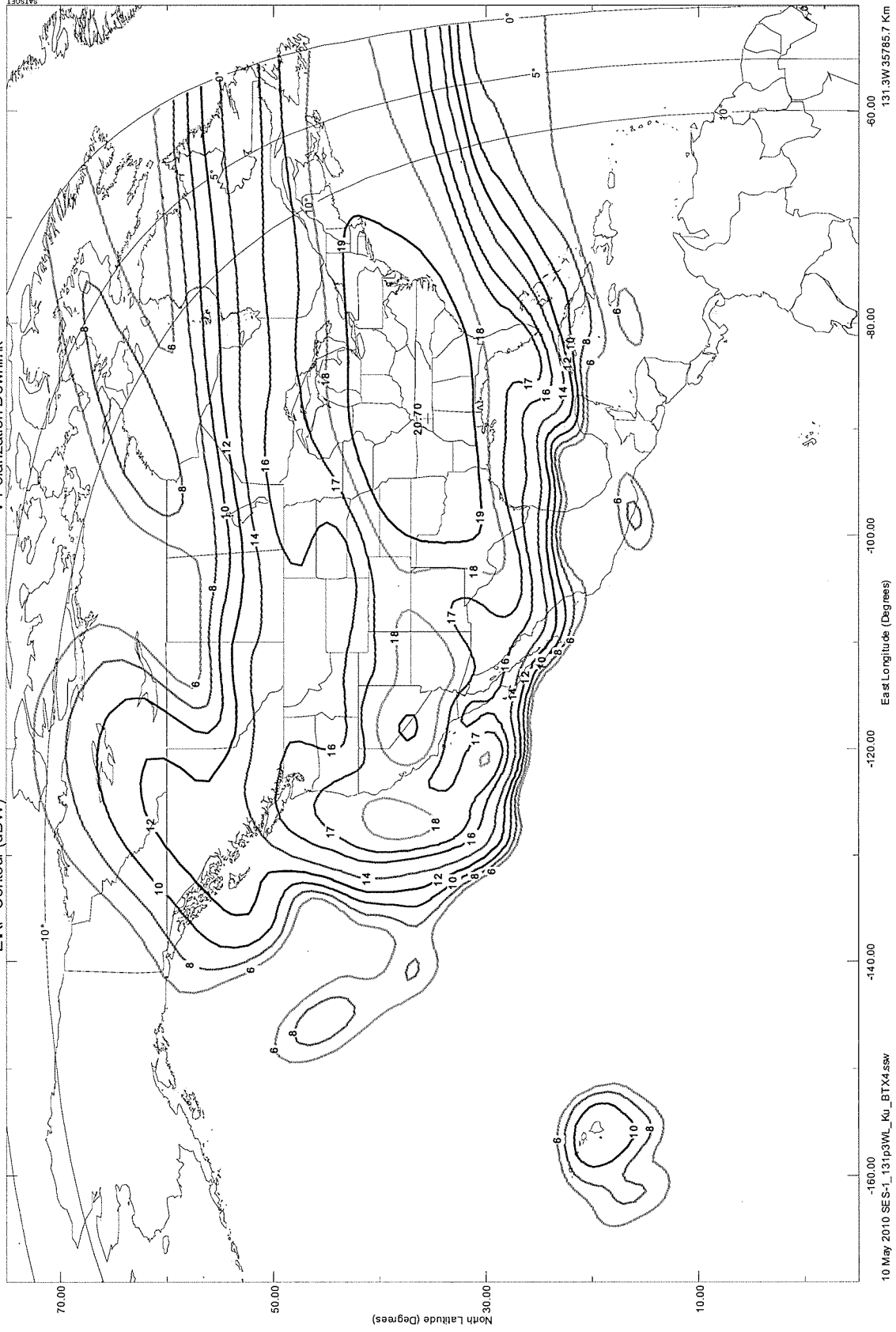
10 May 2010 SES-1\_131p3WL\_Ku\_BTXX3.ssw

East Longitude (Degrees)

131.3W 35785.7 Km

SES-1  
131.3° West Longitude  
ERP Contour (dBW)

Ku-Band BTX 04  
Center Frequency 12199.0 MHz  
V-Polarization Downlink



10 May 2010 SES-1\_131p3W\_Ku\_BT4.ssw

East Longitude (Degrees)

131.3W 35785.7 Km



Hogan Lovells US LLP  
Columbia Square  
555 Thirteenth Street, NW  
Washington, DC 20004  
T +1 202 637 5600  
F +1 202 637 5910  
www.hoganlovells.com

May 24, 2010

***By Electronic Filing***

Mr. Stephen Duall  
Chief, Policy Branch, Satellite Division  
International Bureau  
Federal Communications Commission  
445 12th Street, S.W.  
Washington, D.C. 20554

**Re: File No. SAT-STA-20100511-00097 (Call Sign S2807)**

Dear Mr. Duall:

In the above-referenced application, SES Americom, Inc., ("SES Americom," doing business as "SES WORLD SKIES"),<sup>1</sup> requested special temporary authority ("STA") to position the SES-1 spacecraft at 131.3° W.L. (+/- 0.2 degrees) and operate it there in the C-band for a period of up to seven days beginning on or about May 27, 2010.<sup>2</sup> SES WORLD SKIES hereby clarifies that it is seeking STA for a total period of 30 days and that the requested STA includes authority to drift SES-1 to its assigned 101° W.L. orbital location following completion of operations at 131.3° W.L. (+/- 0.2 degrees).

As it explained in the SES-1 STA Request, SES WORLD SKIES is attempting to mitigate potential interference to operations on its AMC-11 spacecraft at 131° W.L. associated with the approaching Galaxy 15 satellite licensed to PanAmSat Licensee Corp. See SES-1 STA Request, Narrative at 1. SES-1, a replacement satellite assigned to 101° W.L., was launched on April 24, 2010, and in-orbit testing ("IOT") of the spacecraft began on May 9 at 142.5° W.L. pursuant to Commission authority.<sup>3</sup> SES WORLD SKIES proposes to temporarily position and operate SES-1 in the C-band at 131.3° W.L. (+/- 0.2 degrees). This will permit customers of AMC-11 to use SES-1 as an alternative to AMC-11 during the period when Galaxy 15, which is drifting eastward in an uncontrolled manner towards AMC-11, is passing through and departing AMC-11's nominal stationkeeping volume. *Id.* at

---

<sup>1</sup> On September 7, 2009, SES S.A. announced that the newly integrated operations of its two indirect subsidiaries, New Skies Satellites B.V. and SES Americom would be conducted under a single brand name, SES WORLD SKIES. The new brand name does not affect the underlying legal entities that hold Commission authorizations or U.S. market access rights.

<sup>2</sup> File No. SAT-STA-20100511-00097 (Call Sign S2807), filed May 11, 2010 (the "SES-1 STA Request").

<sup>3</sup> See File No. SAT-STA-20100408-00068 (Call Sign S2807), grant-stamped Apr. 23, 2010.



3. Once temporary operations of SES-1 at 131.3° W.L. (+/- 0.2 degrees) are completed, SES-1 will recommence its drift to 101° W.L. *Id.* at 4.

Testing of SES-1 has been completed, and the spacecraft began its drift away from the 142.5° W.L. IOT location on May 22. SES WORLD SKIES requests that the Commission grant the SES-1 STA Request for a total of 30 days effective on May 27, permitting C-band operations of SES-1 at 131.3° W.L. (+/- 0.2 degrees) for up to seven days and authorizing Tracking, Telemetry, Command, and Monitoring to maintain the spacecraft at 131.3° W.L. (+/- 0.2 degrees) and thereafter to drift the satellite to 101° W.L.

Please address any questions regarding this matter to the undersigned.

Respectfully submitted,

*/s/ Karis A. Hastings*

Karis A. Hastings

Counsel for SES Americom, Inc.  
karis.hastings@hoganlovells.com  
D +1.202.637.5767

cc: Kathryn Medley

**From:** Hastings, Karis A. [mailto:karis.hastings@hoganlovells.com]  
**Sent:** Tuesday, May 25, 2010 3:24 PM  
**To:** Stephen Duall  
**Cc:** Kathryn Medley; Daniel Mah  
**Subject:** SES-1 STA Request, File No. SAT-STA-20100511-00097 (Call Sign S2807)  
**Importance:** High

Stephen,

As a follow-up to our discussion today, I have confirmed that during the drift of SES-1 from 131.3° W.L. (+/- .2 degrees) to 101° W.L., SES Americom, Inc. would like to have authority to conduct TT&C in both the conventional Ku-band and the conventional C-band. Plans are to use the Ku-band only during the drift, but we would prefer to have authority to use the C-band as well if needed. As indicated in the STA request, during the stop at 131.3° W.L. (+/- .2 degrees), TT&C will be conducted only in the conventional Ku-band.

Please let me know if you have any further questions regarding this request.

Best regards,  
Karis

**Karis Hastings**

Counsel

Hogan Lovells US LLP Columbia Square 555 Thirteenth Street, NW Washington, DC 20004	
Tel:	+1 202 637 5600
Direct:	+1 202 637 5767
Fax:	+1 202 637 5910
Email:	<a href="mailto:karis.hastings@hoganlovells.com">karis.hastings@hoganlovells.com</a>
	<a href="http://www.hoganlovells.com">www.hoganlovells.com</a>

*Please consider the environment before printing this e-mail.*

---

Hogan Lovells refers to the international legal practice comprising Hogan Lovells International LLP, Hogan Lovells US LLP, Hogan Lovells Worldwide Group (a Swiss Verein), and their affiliated businesses. Hogan Lovells International LLP is a limited liability partnership registered in England and Wales with registered number OC323639. Registered office and principal place of business: Atlantic House, Holborn Viaduct, London EC1A 2FG. Hogan Lovells US LLP is a limited liability partnership registered in the District of Columbia.

The word "partner" is used to refer to a member of Hogan Lovells International LLP or a partner of Hogan Lovells US LLP, or an employee or consultant with equivalent standing and qualifications, and to a partner, member, employee or consultant in any of their affiliated businesses who has equivalent standing. A list of the members of Hogan Lovells International LLP and of the non-members who are designated as partners, and of their respective professional qualifications, is open to inspection at the above address. Further important information about Hogan Lovells can be found on [www.hoganlovells.com](http://www.hoganlovells.com).

CONFIDENTIALITY. This email and any attachments are confidential, except where the email states it can be disclosed, it

may also be privileged. If received in error, please do not disclose the contents to anyone, but notify the sender by return email and delete this email (and any attachments) from your system.