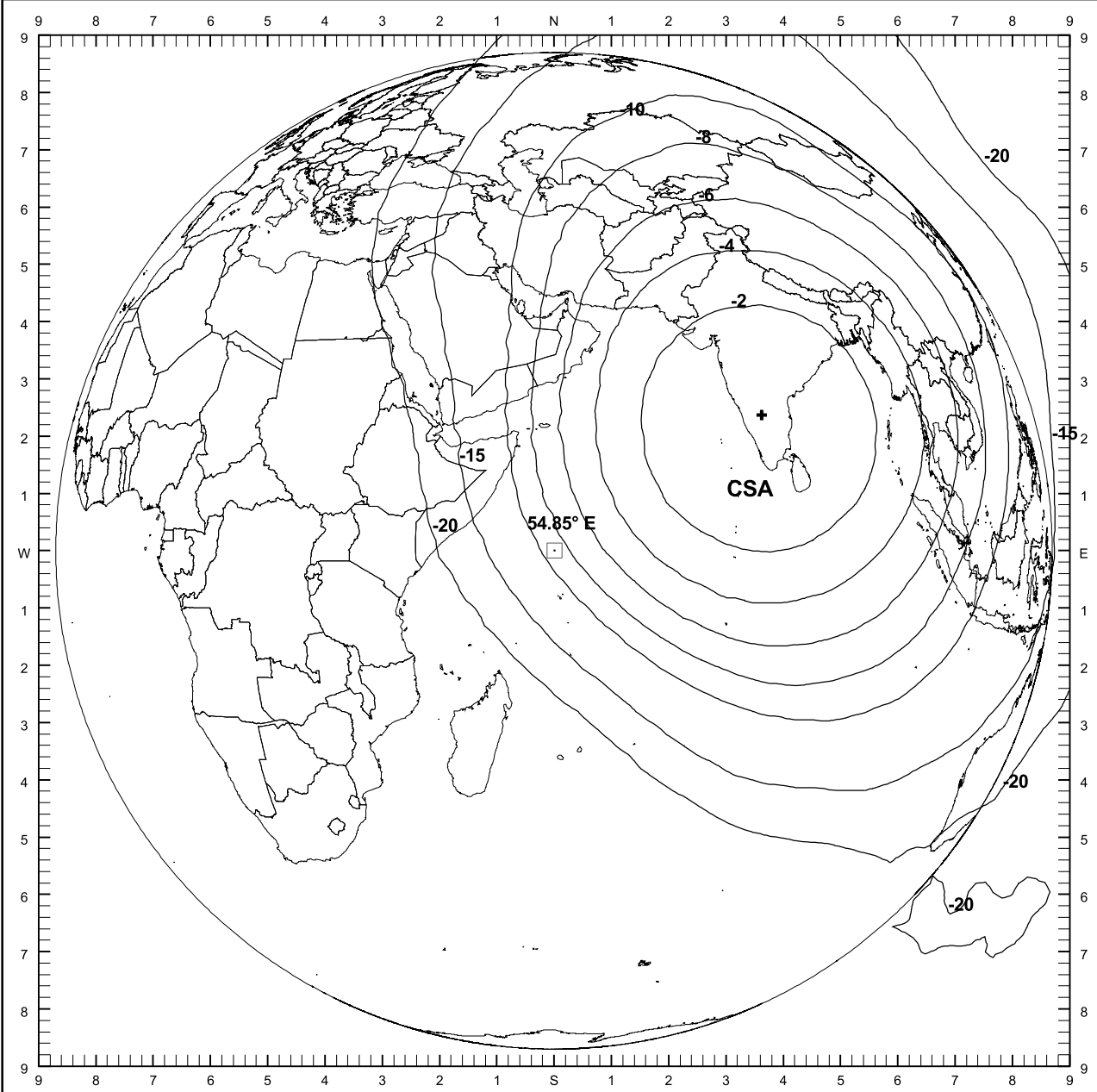


**FURTHER AMENDMENT TO INTELSAT 702 MODIFICATION
APPLICATION**

ATTACHMENT I: Coverage of the INTELSAT 702 Satellite From 54.85° E.L.

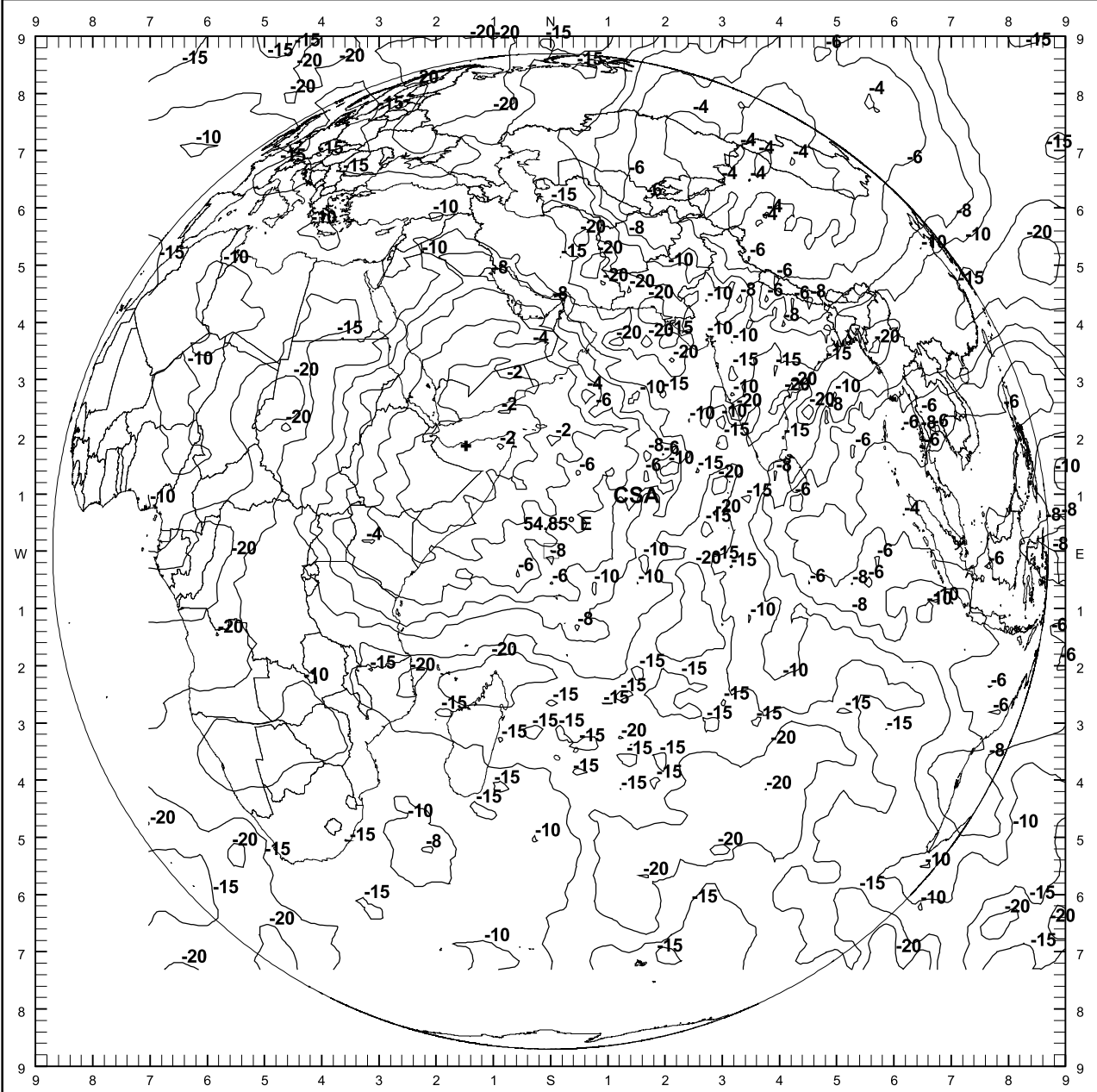
PART 1 of 2



INTELSAT 702 at 54.85°E Antenna Coverage

S/C Platform Bias	: 1.80°W 0.75°S
YAW	: 0.00°
Antenna Pointing	
CSA	: 3.22°E 2.94°N
Peak Gain (Uplink Co-pol) (See +)	
CSA	: 30.2 dBi
Beam Peak G/T	
CSA	: 2.7 dB/K
Contour Levels	
CSA	: -2, -4, -6, -8, -10, -15, -20 dB
Beam Frequencies	
CSA	: 6320
Polarization	
CSA	: Circular LHCP
Square	: Sub-Satellite Point

INTELSAT 702 at 54.85°E Antenna Coverage
 S/C Platform Bias : 1.80°W 0.75°S
 YAW : 0.00°
 Antenna Pointing
 CSA : 3.22°E 2.94°N
 Peak Gain (Uplink X-pol) (See +)
 CSA : 5.3 dBi
 Contour Levels
 CSA : -2,-4,-6,-8,-10,-15,-20 dB
 Beam Frequencies
 CSA : 6320
 Polarization
 CSA : Circular RHCP
 Square : Sub-Satellite Point



INTELSAT 702 at 54.85°E Antenna Coverage
 S/C Platform Bias : 1.80°W 0.75°S
 YAW : 0.00°
 Antenna Pointing
 CSB : 3.22°E 2.94°N

 Peak Gain (Uplink Co-pol) (See +)
 CSB : 30.2 dBi

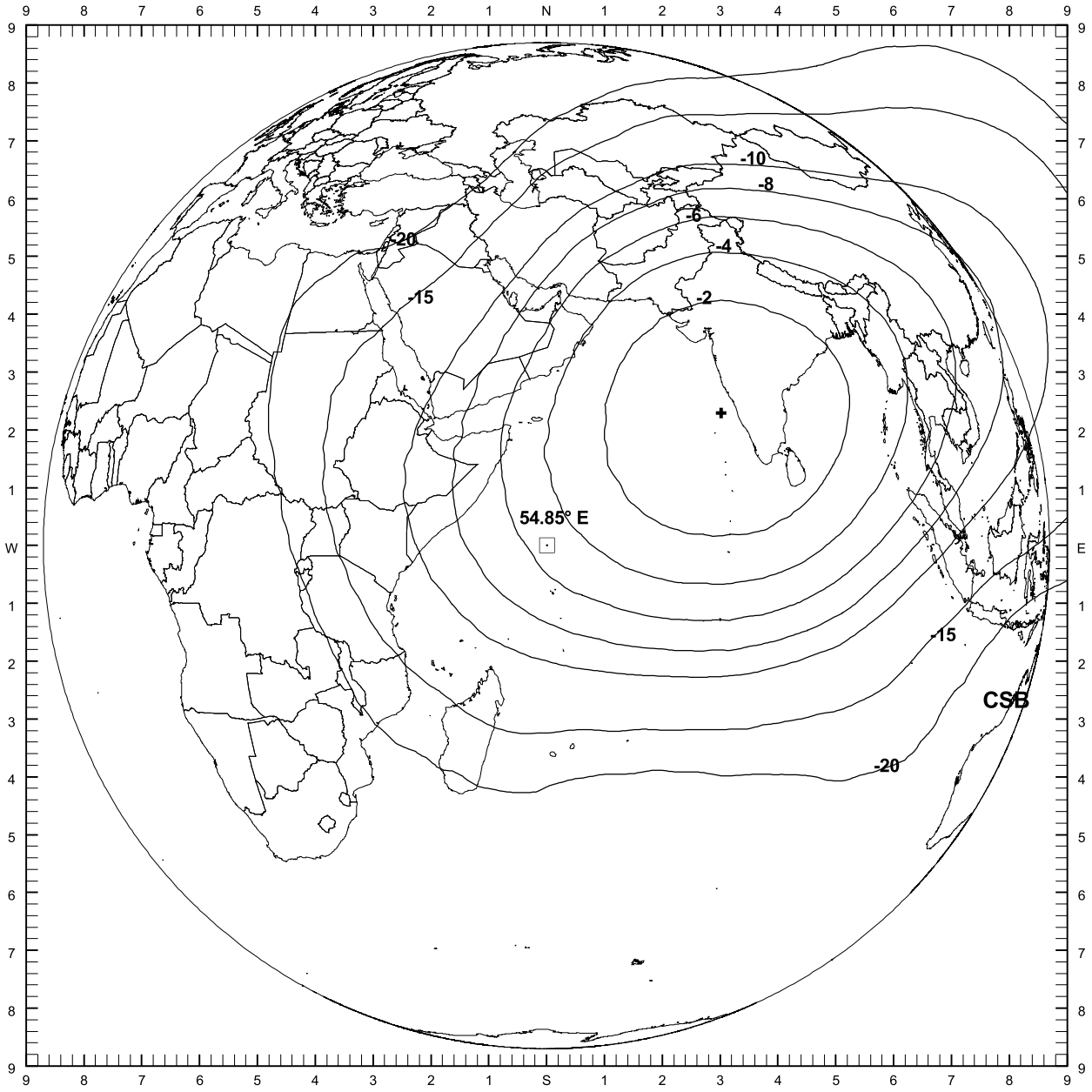
 Beam Peak G/T
 CSB : 2.7 dB/K

 Contour Levels
 CSB : -2,-4,-6,-8,-10,-15,-20 dB

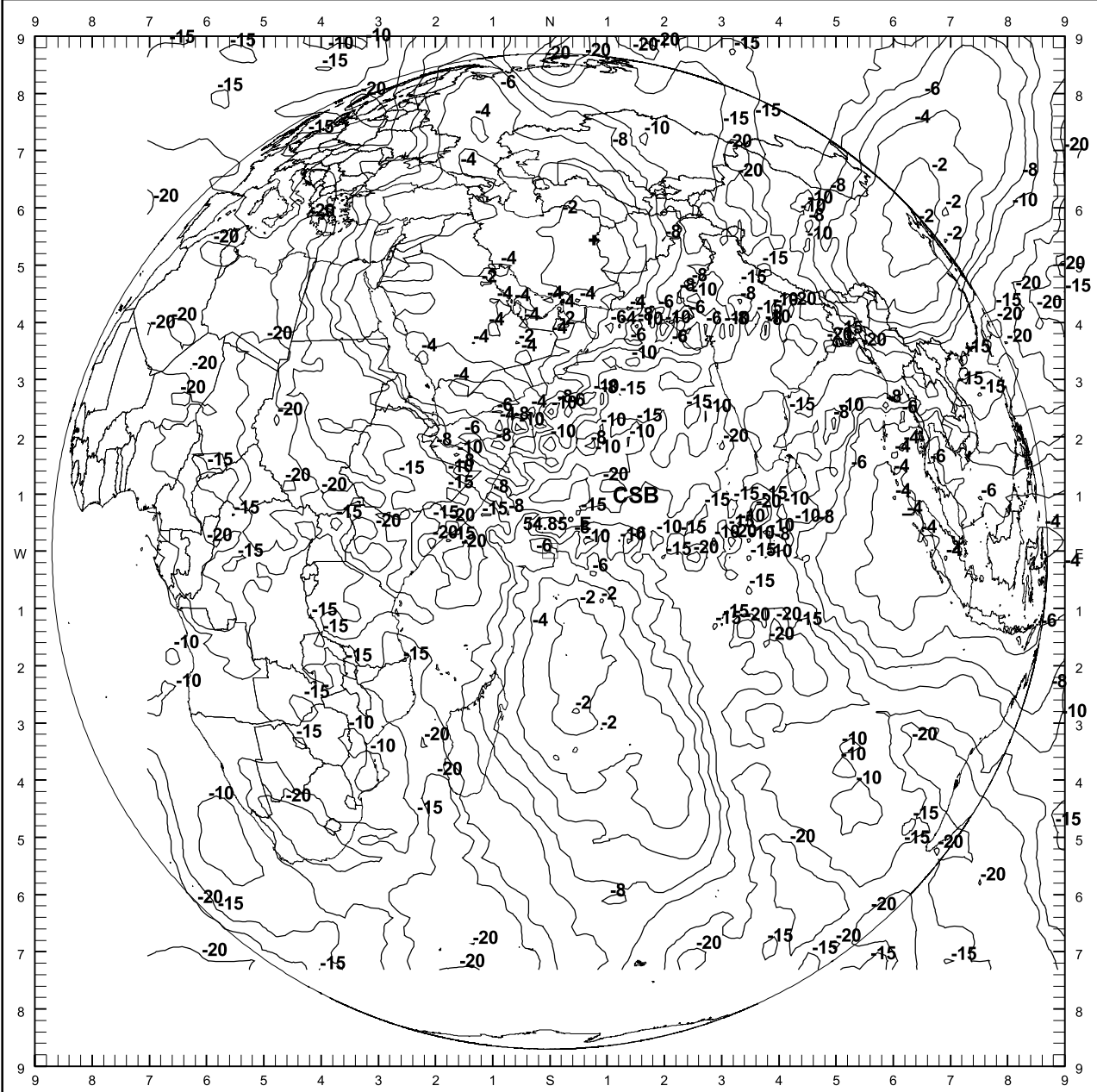
 Beam Frequencies
 CSB : 6320

 Polarization
 CSB : Circular RHCP

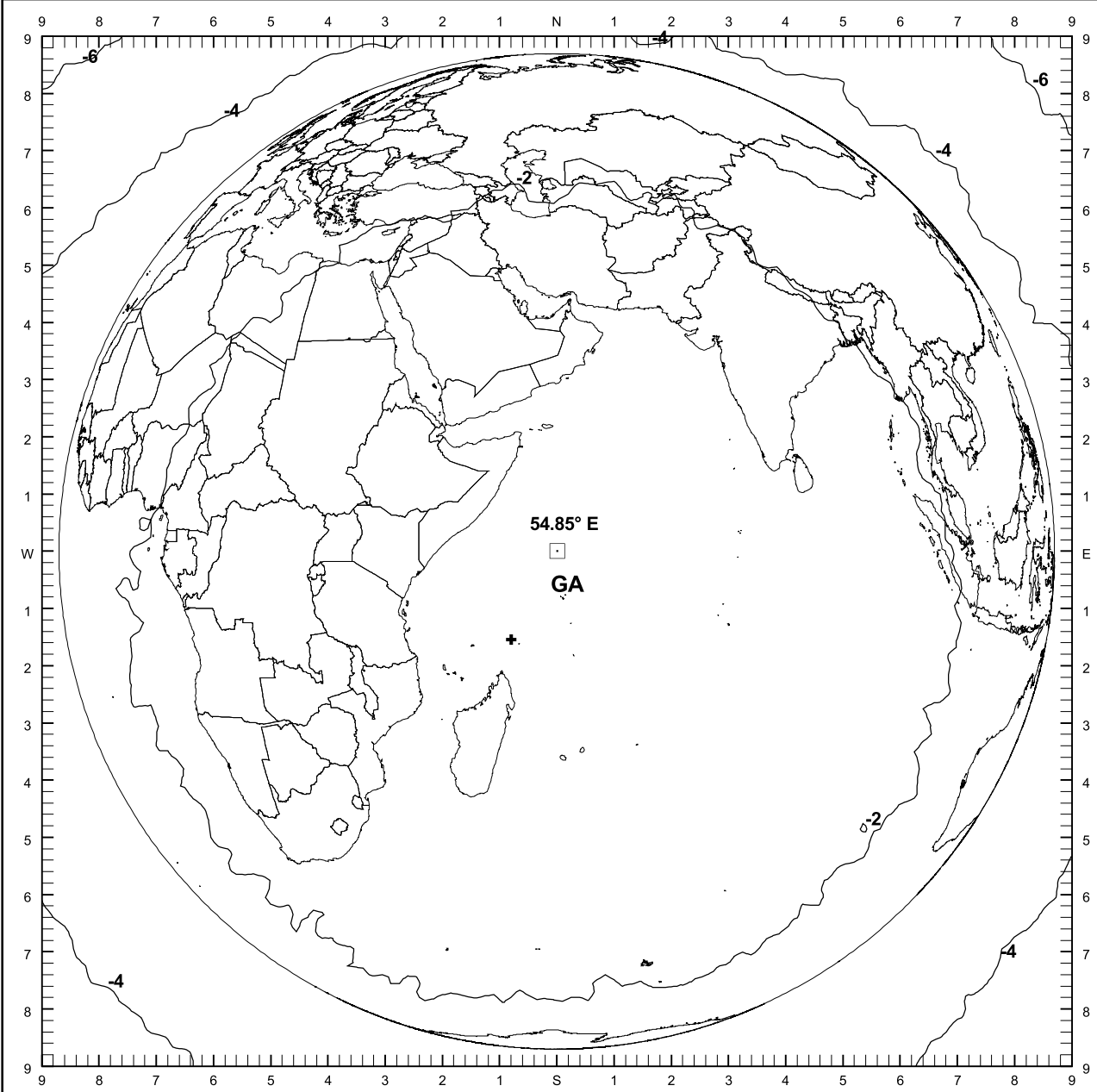
 Square : Sub-Satellite Point



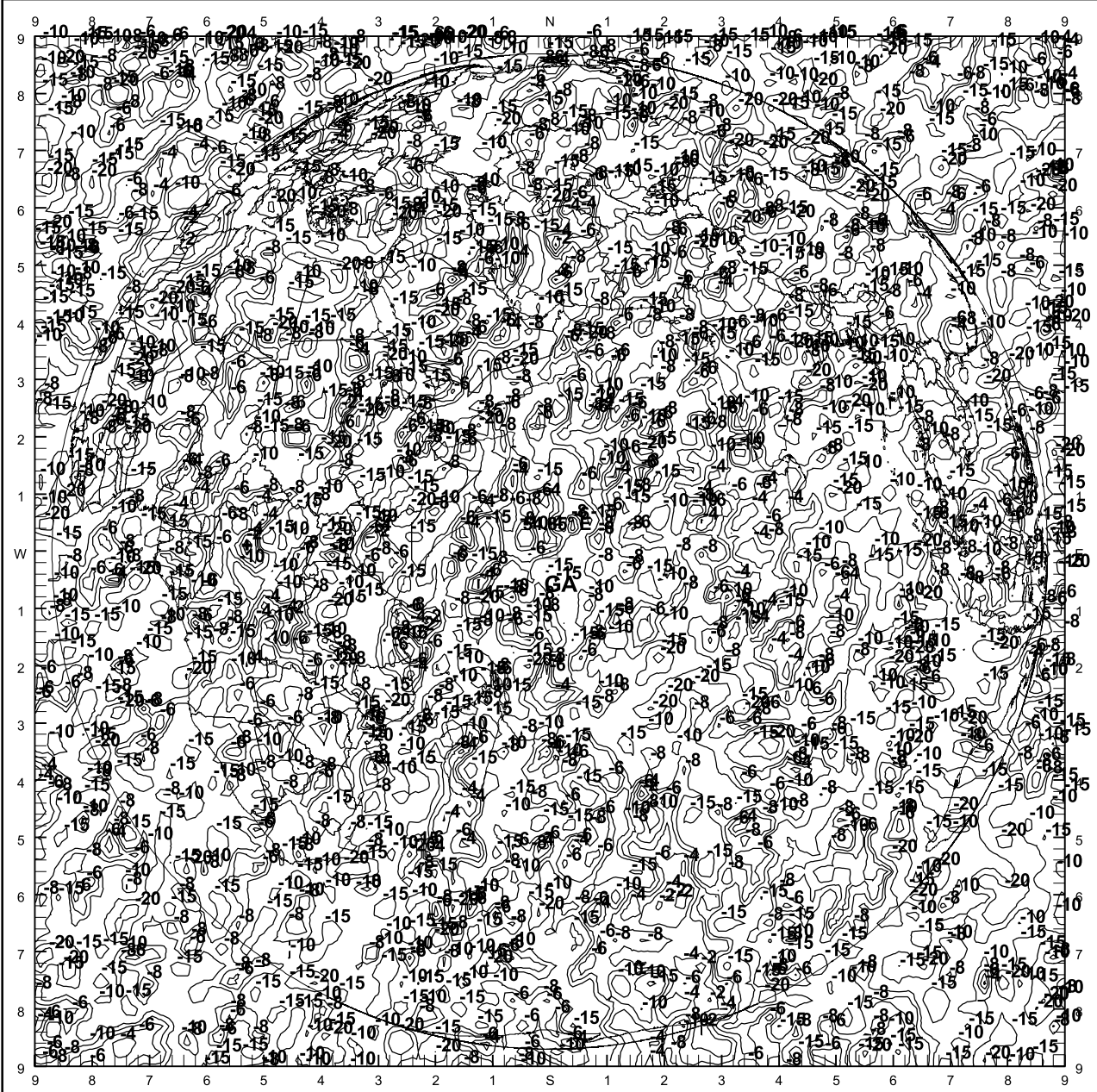
INTELSAT 702 at 54.85°E Antenna Coverage
 S/C Platform Bias : 1.80°W 0.75°S
 YAW : 0.00°
 Antenna Pointing
 CSB : 3.22°E 2.94°N
 Peak Gain (Uplink X-pol) (See +)
 CSB : 2.2 dBi
 Contour Levels
 CSB : -2,-4,-6,-8,-10,-15,-20 dB
 Beam Frequencies
 CSB : 6320
 Polarization
 CSB : Circular LHCP
 Square : Sub-Satellite Point

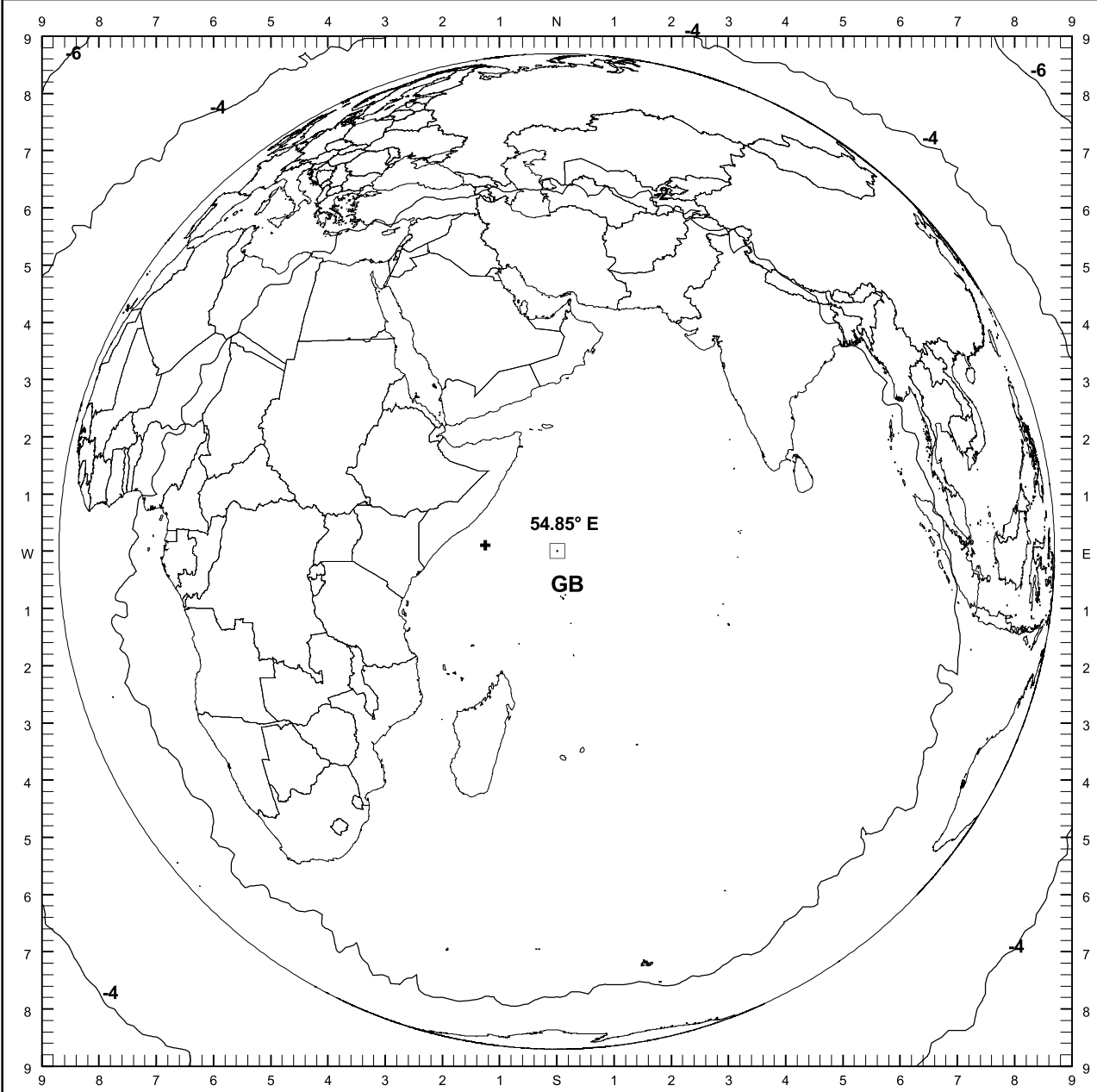


INTELSAT 702 at 54.85°E Antenna Coverage
 S/C Platform Bias : 1.80°W 0.75°S
 YAW : 0.00°
 Antenna Pointing
 GA : 0.00°E 0.75°S
 Peak Gain (Uplink Co-pol) (See +)
 GA : 20.7 dBi
 Beam Peak G/T
 GA : -6.9 dB/K
 Contour Levels
 GA : -2,-4,-6,-8,-10,-15,-20 dB
 Beam Frequencies
 GA : 6320
 Polarization
 GA : Circular LHCP
 Square : Sub-Satellite Point



INTELSAT 702 at 54.85°E Antenna Coverage
S/C Platform Bias : 1.80°W 0.75°S
YAW : 0.00°
Antenna Pointing
GA : 0.00°E 0.75°S
Peak Gain (Uplink X-pol) (See +)
GA : -8.7 dBi
Contour Levels
GA : -2,-4,-6,-8,-10,-15,
-20 dB
Beam Frequencies
GA : 6320
Polarization
GA : Circular RHCP
Square : Sub-Satellite Point





INTELSAT 702 at 54.85°E Antenna Coverage	
S/C Platform Bias	: 1.80°W 0.75°S
YAW	: 0.00°
Antenna Pointing	
GB	: 0.00°E 0.75°S
Peak Gain (Uplink Co-pol) (See +)	
GB	: 20.6 dBi
Beam Peak G/T	
GB	: -7.1 dB/K
Contour Levels	
GB	: -2,-4,-6,-8,-10,-15,-20 dB
Beam Frequencies	
GB	: 6320
Polarization	
GB	: Circular RHCP
Square	: Sub-Satellite Point

INTELSAT 702 at 54.85°E Antenna Coverage

S/C Platform Bias : 1.80°W 0.75°S
 YAW : 0.00°
 Antenna Pointing
 GB : 0.00°E 0.75°S

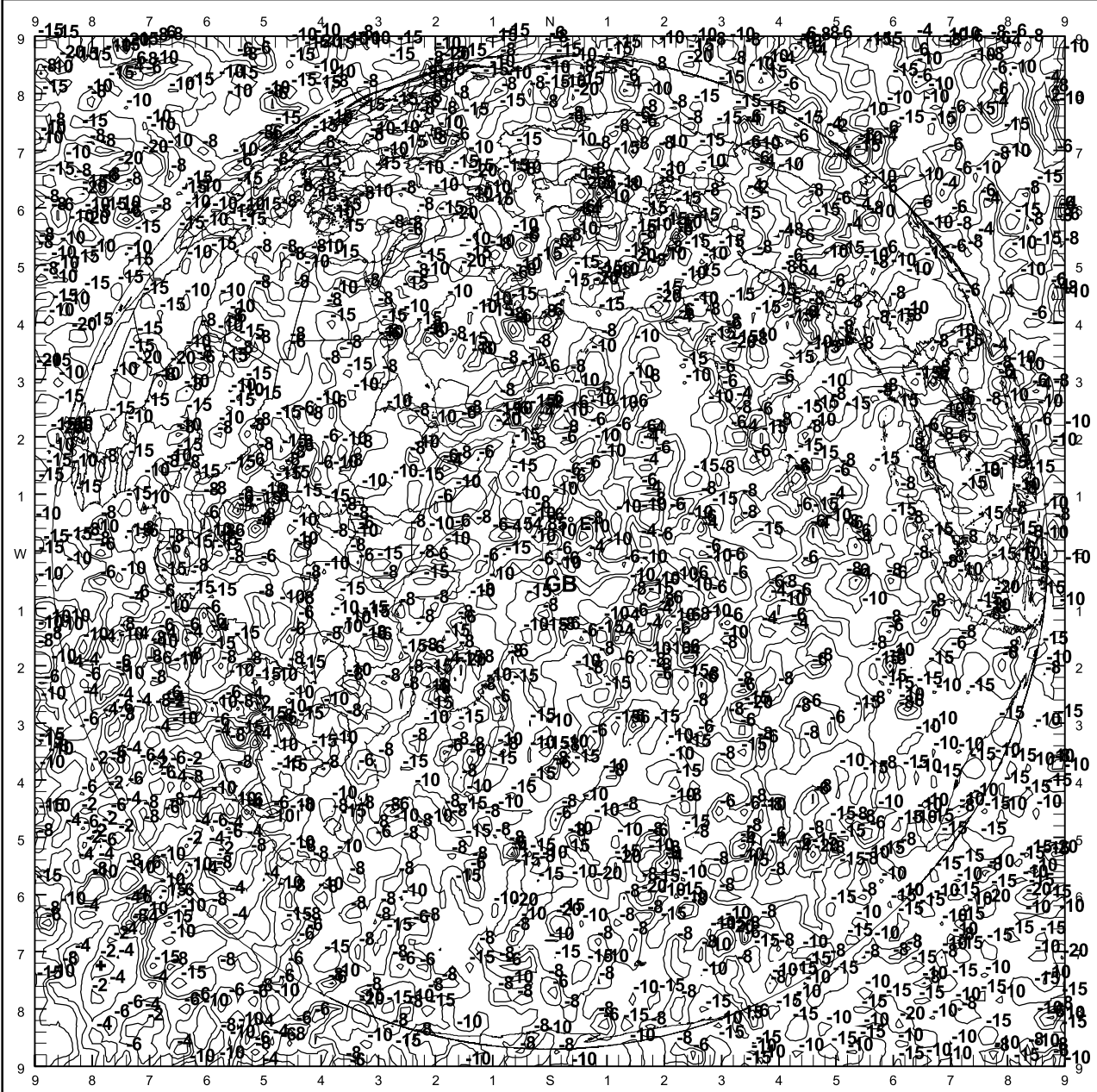
Peak Gain (Uplink X-pol) (See +)
 GB : -10.0 dBi

Contour Levels
 GB : -2,-4,-6,-8,-10,-15,-20 dB

Beam Frequencies
 GB : 6320

Polarization
 GB : Circular LHCP

Square : Sub-Satellite Point



INTELSAT 702 at 54.85°E Antenna Coverage
 S/C Platform Bias : 1.80°W 0.75°S
 YAW : 0.00°

Peak Gain (Uplink Co-pol) (See +)
 H1 : 23.8 dBi

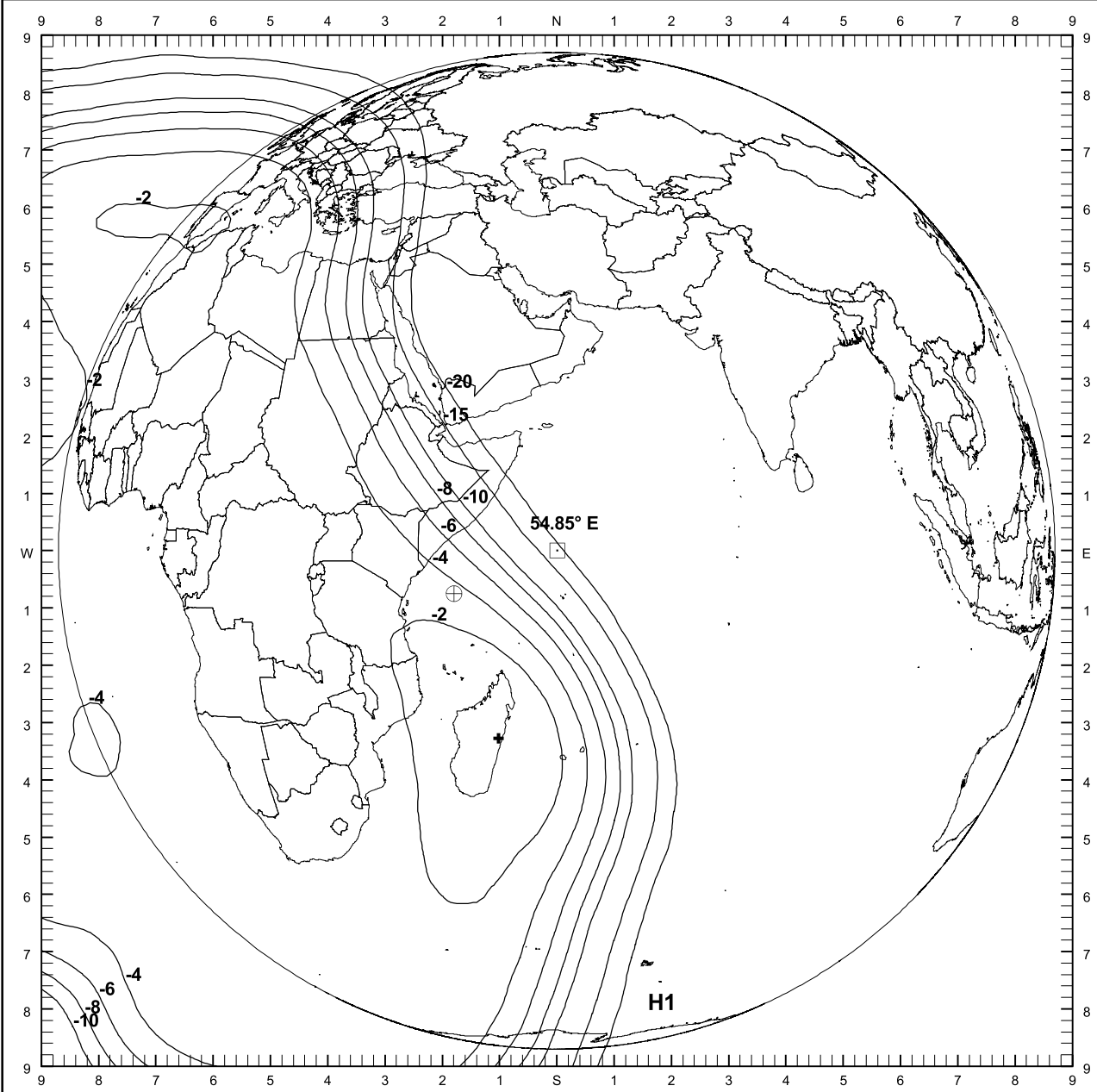
Beam Peak G/T
 H1 : -3.5 dB/K

Contour Levels
 H1 : -2,-4,-6,-8,-10,-15,-20 dB

Beam Frequencies
 H1 : 6149

Polarization
 H1 : Circular LHCP

Square : Sub-Satellite Point
 Circle : Sat.Ant.Platform Bias



INTELSAT 702 at 54.85°E Antenna Coverage
 S/C Platform Bias : 1.80°W 0.75°S
 YAW : 0.00°

Peak Gain (Uplink X-pol) (See +)
 H1 : -0.9 dBi

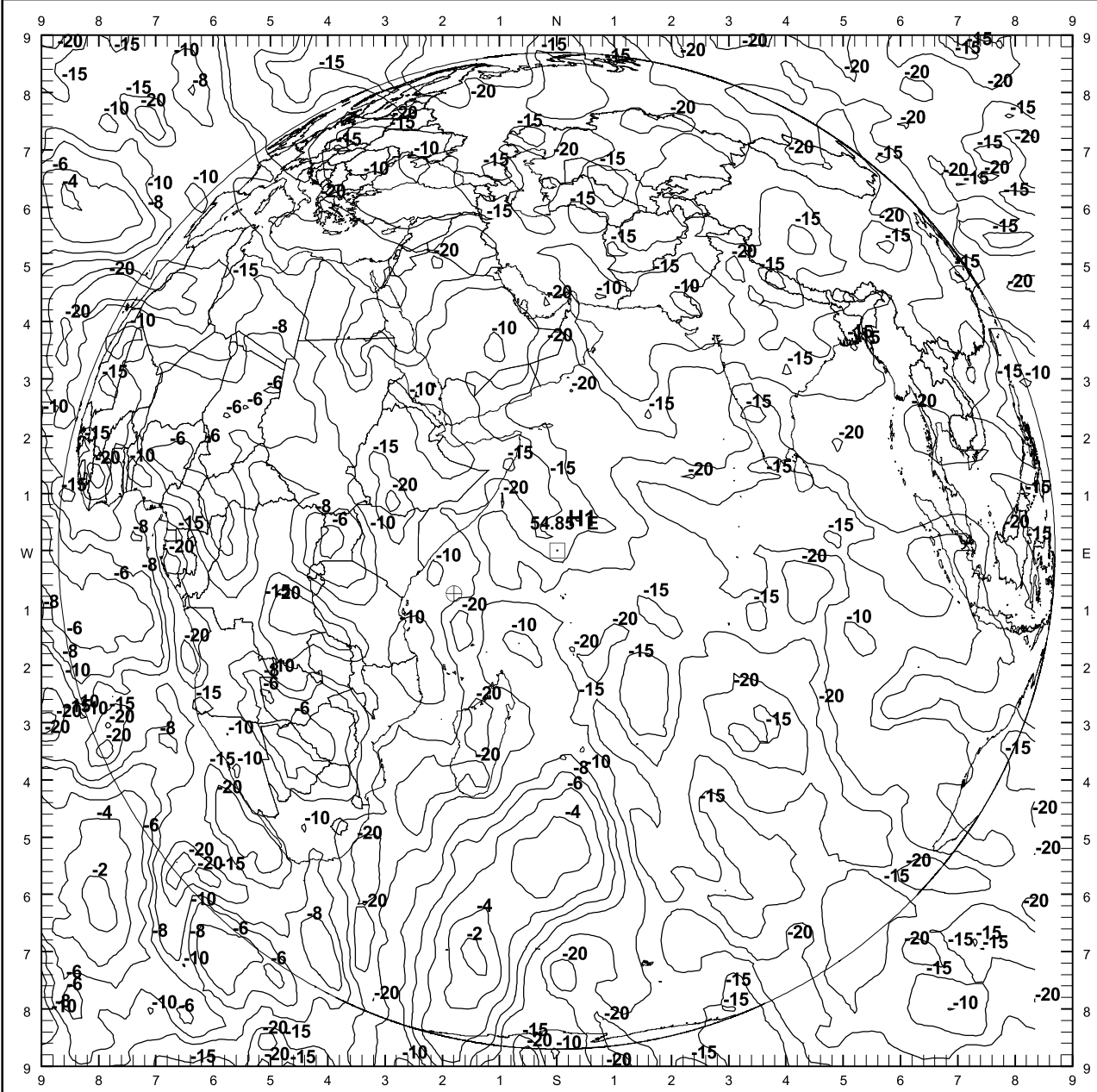
Contour Levels
 H1 : -2,-4,-6,-8,-10,-15,-20 dB

Beam Frequencies
 H1 : 6149

Polarization
 H1 : Circular RHCP

Square : Sub-Satellite Point

Circle : Sat.Ant.Platform Bias



INTELSAT 702 at 54.85°E Antenna Coverage
 S/C Platform Bias : 1.80°W 0.75°S
 YAW : 0.00°

Peak Gain (Uplink Co-pol) (See +)
 H2 : 25.8 dBi

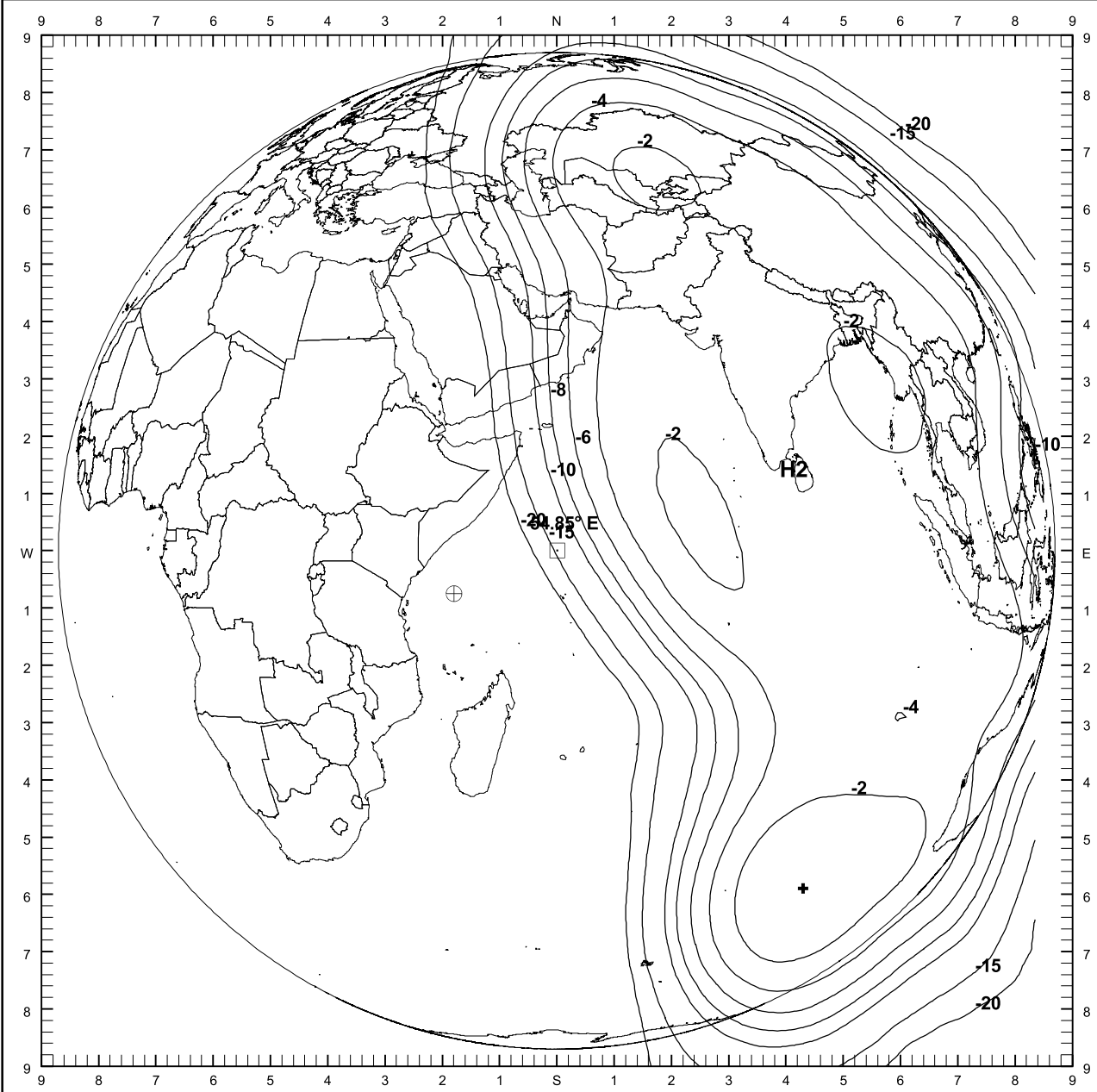
Beam Peak G/T
 H2 : -1.7 dB/K

Contour Levels
 H2 : -2,-4,-6,-8,-10,-15,-20 dB

Beam Frequencies
 H2 : 6149

Polarization
 H2 : Circular LHCP

Square : Sub-Satellite Point
 Circle : Sat.Ant.Platform Bias



INTELSAT 702 at 54.85°E Antenna Coverage
 S/C Platform Bias : 1.80°W 0.75°S
 YAW : 0.00°

Peak Gain (Uplink X-pol) (See +)
 H2 : -0.4 dBi

Contour Levels
 H2 : -2, -4, -6, -8, -10, -15, -20 dB

Beam Frequencies
 H2 : 6149

Polarization
 H2 : Circular RHCP

Square : Sub-Satellite Point

Circle : Sat.Ant.Platform Bias

