

EXHIBIT A

Rate Quote

Use Securus' Rate Quote to quickly and easily find out the cost of a call or another Securus service.

First, be sure that Securus services the correctional facility you would like to communicate with by checking our [Facilities We Serve \(/facilities-we-serve\)](#) page.

Please select a service below, complete the required information, and click submit.

Choose a Service:

AdvancedConnect

Your Country:

United States

Your Phone Number:

1

2483770100

Facility State:

MI

Facility Name:

SANILAC COUNTY JAIL

RESET

SUBMIT

Facility: SANILAC COUNTY JAIL

Breakdown of Call Rate per Minute

Connection Charge	\$ 0.00
Initial Amount	\$ 8.20
Additional Amount	\$ 0.01

Rate periods are based upon the time of the day a call is accepted.

Rate Quote

Use Securus' Rate Quote to quickly and easily find out the cost of a call or another Securus service.

First, be sure that Securus services the correctional facility you would like to communicate with by checking our [Facilities We Serve \(/facilities-we-serve\)](#) page.

Please select a service below, complete the required information, and click submit.

Choose a Service:

Your Country:

Your Phone Number:

Facility State:

Facility Name:

Facility: SANILAC COUNTY JAIL

Breakdown of Call Rate per Minute

Connection Charge	\$ 0.00
Initial Amount	\$ 8.20
Additional Amount	\$ 0.01

Rate periods are based upon the time of the day a call is accepted.

Rate Quote

Use Securus' Rate Quote to quickly and easily find out the cost of a call or another Securus service.

First, be sure that Securus services the correctional facility you would like to communicate with by checking our [Facilities We Serve \(/facilities-we-serve\)](#) page.

Please select a service below, complete the required information, and click submit.

Choose a Service:

Traditional Collect

Your Country:

United States

Your Phone Number:

1

2483770100

Facility State:

MI

Facility Name:

SANILAC COUNTY JAIL

RESET

SUBMIT

Facility: SANILAC COUNTY JAIL

Breakdown of Call Rate per Minute

Connection Charge	\$ 0.00
Initial Amount	\$ 8.20
Additional Amount	\$ 0.01

Rate periods are based upon the time of the day a call is accepted.

EXHIBIT D

Securus Monthly Commission Reports

Sanilac County

Call Type	January 2014	January 2015	January 2016	December 2016	Difference - January 2014 & December 2016
Local Minutes	859	1519	1455	634	73.81%
IntraLata Minutes	11977	10828	11067	8728	72.87%
InterLata Minutes	1422	2110	1380	919	64.63%
Interstate Minutes	1439	29255	33874	40997	2848.99%
Total Minutes	15697	43712	47776	51278	326.67%
Commissions	\$3,880.00	\$4,714.85	\$4,499.33	\$2,695.17	69.46%
Total Revenue	6925.49	14891.17	14496.79	12275.04	177.24%

Ottawa County

Call Type	January 2014	January 2015	January 2016	December 2016	Difference - January 2014 & December 2016
Local Minutes	7119	5359	2929	5174	72.68%
IntraLata Minutes	3405	2940	2452	2990	87.81%
InterLata Minutes	578	814	57	600	103.81%
Interstate Minutes	397	10004	6836	23611	5947.36%
Total Minutes	11499	19117	12274	32375	281.55%
Commissions	\$5,870.00	\$5,643.94	\$4,110.39	\$6,744.09	114.89%
Total Revenue	\$14,346.62	\$9,738.15	\$6,211.07	\$12,593.19	87.78%

Kent County

Call Type	January 2014	January 2015	January 2016	December 2016	Difference - January 2014 & December 2016
Local Minutes	55062	48655	44996	54883	99.67%
IntraLata Minutes	6430	5262	4929	11138	173.22%
InterLata Minutes	1138	2026	2851	1156	101.58%
Interstate Minutes	1062	14865	39957	43945	4137.95%
Total Minutes	63692	70808	92733	111122	174.47%
Commissions	\$21,855.92	\$24,169.85	\$25,175.79	\$12,730.82	58.25%
Total Revenue	\$34,304.25	\$33,014.49	\$36,944.16	\$21,313.84	62.13%

Securus Monthly Commission Reports

Page 2

Iosco County

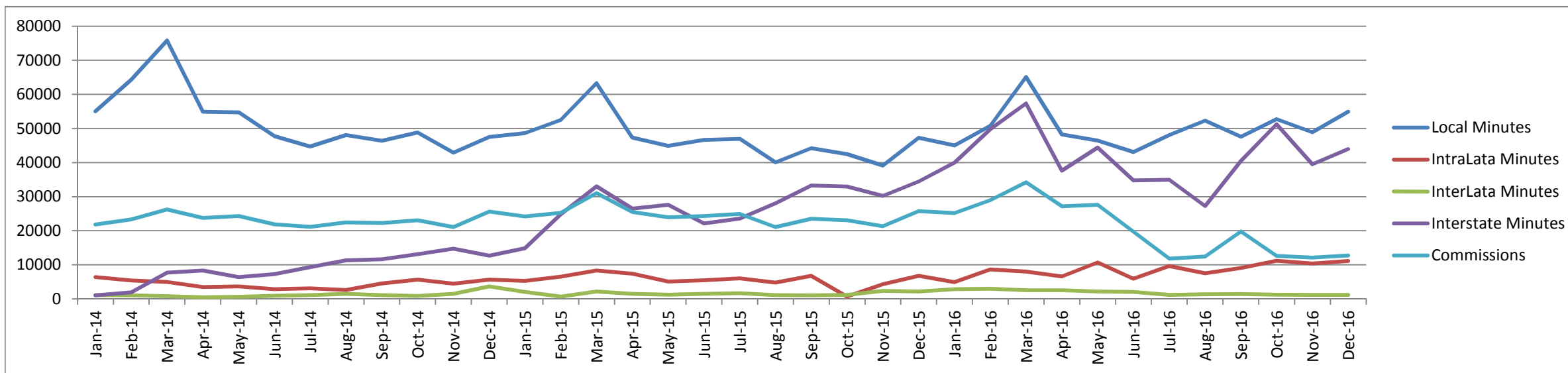
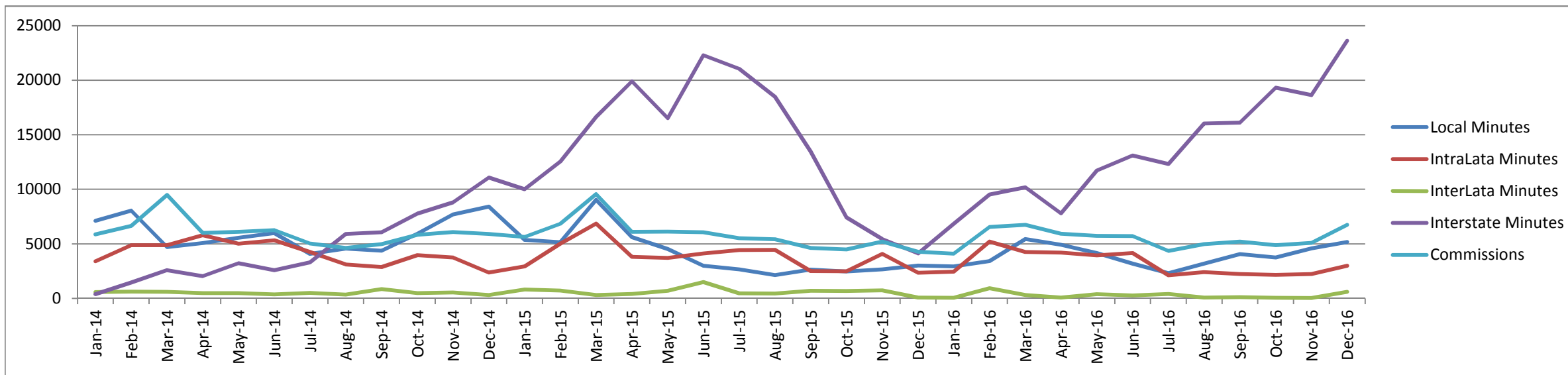
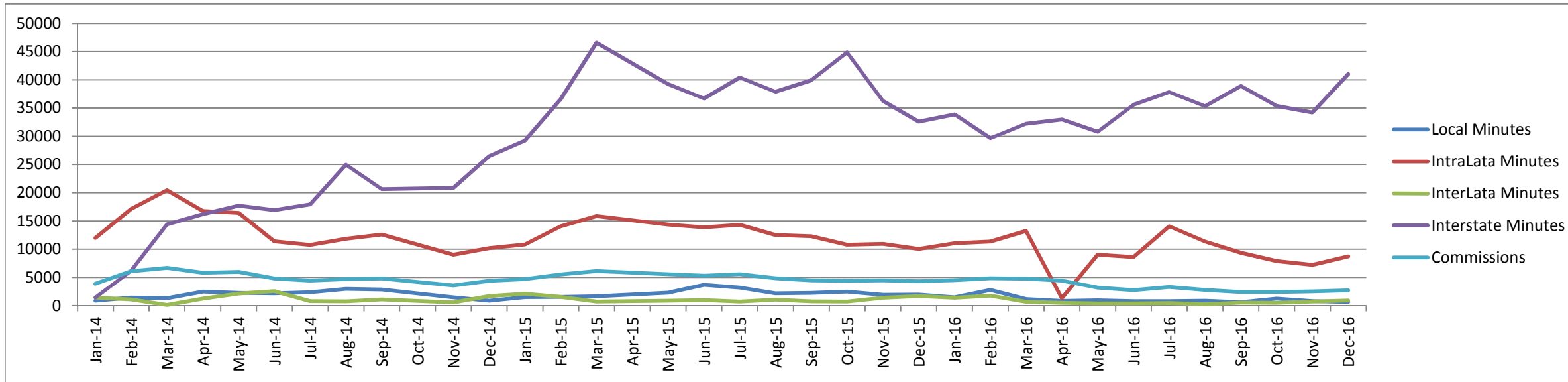
Call Type	January 2014	January 2015	January 2016	December 2016	Difference - January 2014 & December 2016
Local Minutes	2163	1356	882	995	46.00%
IntraLata Minutes	1018	387	475	618	60.71%
InterLata Minutes	396	335	1724	447	112.88%
Interstate Minutes	67	5402	6713	7885	11768.66%
Total Minutes	3644	7480	9794	9945	272.91%
Commissions	\$1,601.67	\$1,059.74	\$1,717.23	\$1,003.39	62.65%
Total Revenue	\$3,087.80	\$3,161.52	\$4,616.18	\$3,662.85	118.62%

Alpena County

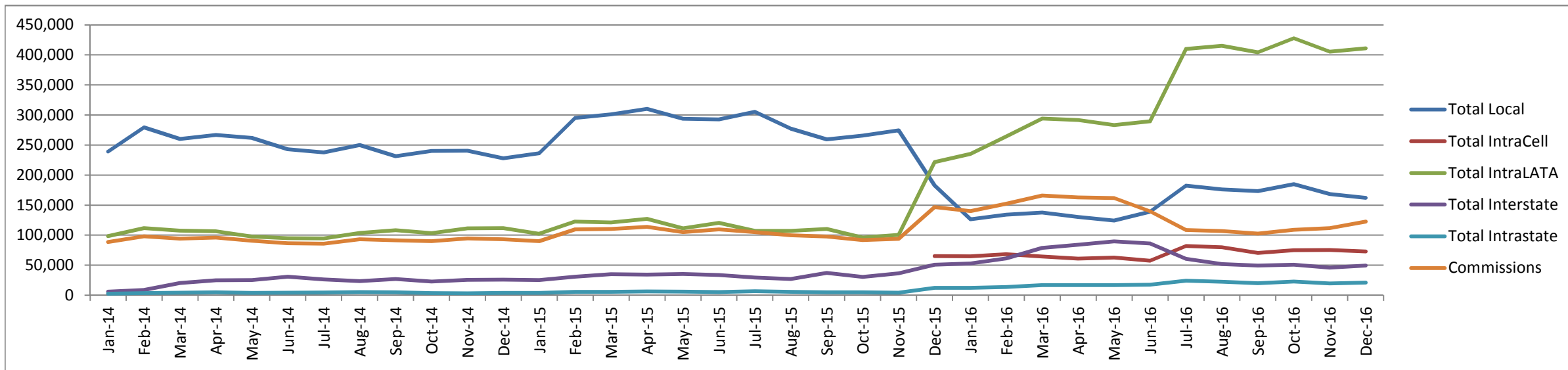
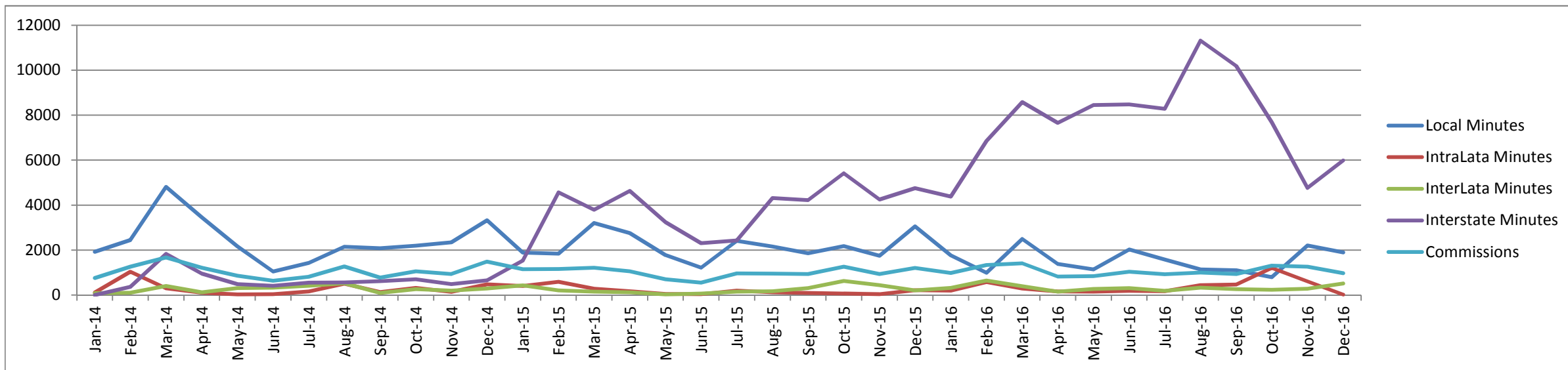
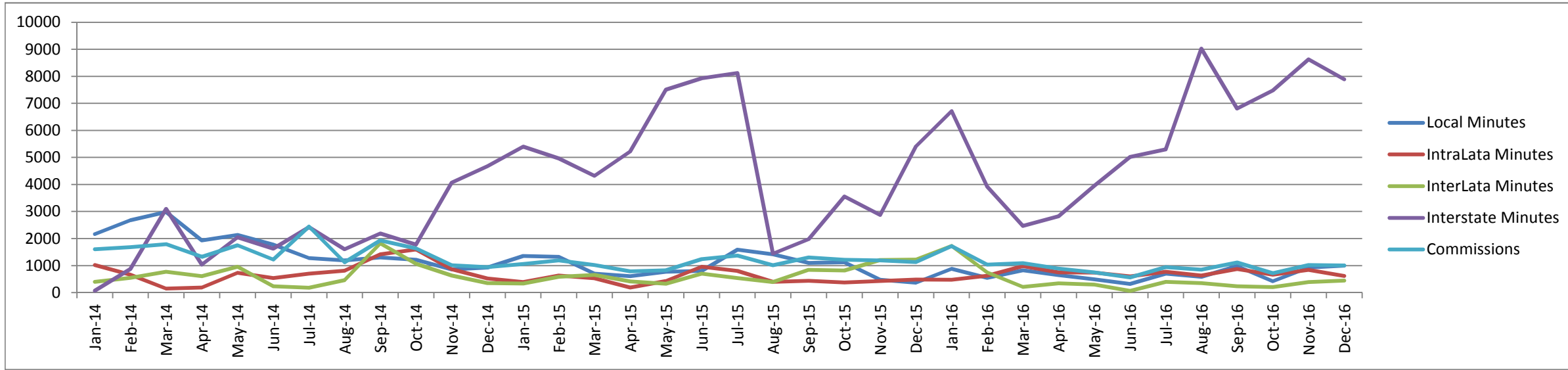
Call Type	January 2014	January 2015	January 2016	December 2016	Difference - January 2014 & December 2016
Local Minutes	1926	1886	1761	1894	98.34%
IntraLata Minutes	113	402	201	21	18.58%
InterLata Minutes	89	429	320	516	42700.00%
Interstate Minutes	3	1533	4380	5983	199433.33%
Total Minutes	2131	4250	6662	8414	394.84%
Commissions	\$754.63	\$1,150.00	\$977.83	\$967.45	128.20%
Total Revenue	\$1,450.58	\$2,416.18	\$2,556.24	\$2,924.40	201.60%

EXHIBIT E

Comparison of Securus, GTL and ICS Michigan Monthly Commission Reports



Comparison of Securus, GTL and ICS Michigan Monthly Commission Reports



Comparison of Securix, GTL and ICS Michigan Monthly Commission Reports

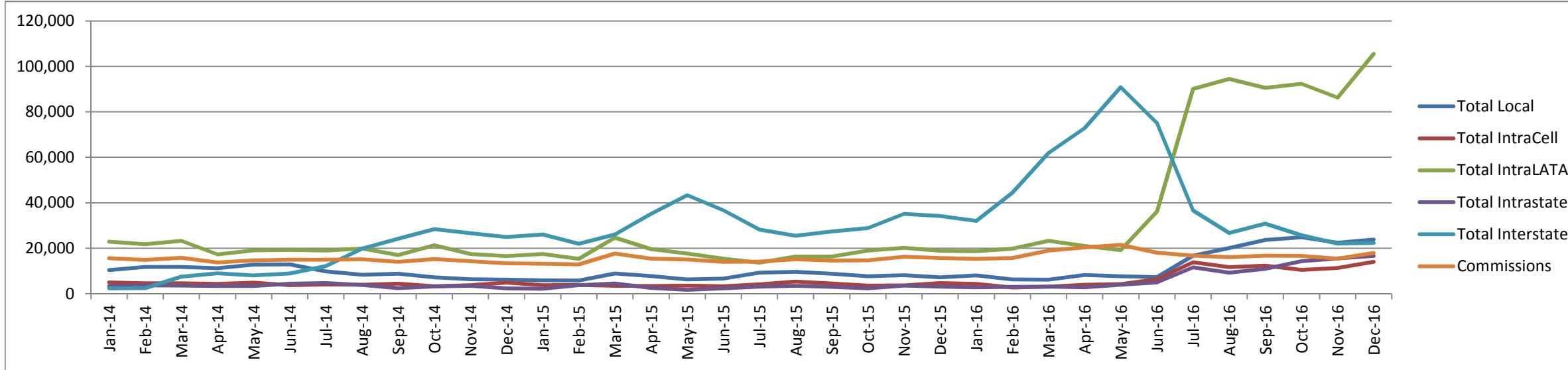
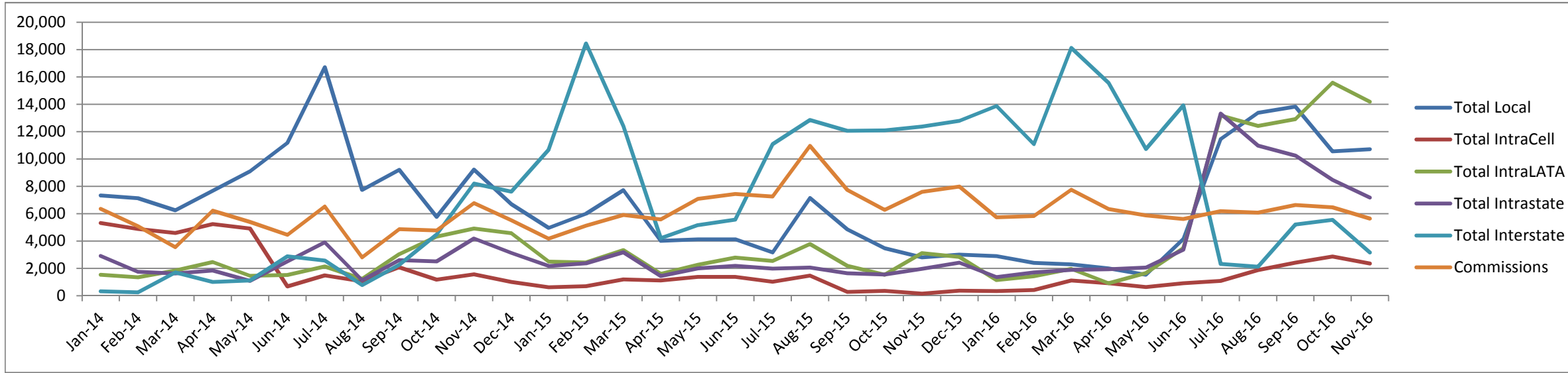


EXHIBIT F

Securus Intrastate Rates

November 2016

State	Facility Name	First Minute Rate (\$)	Sub. Minute Rate (\$)	15 Minute Rate (\$)	Second Minute to First Minute
CO	Boulder County Jail	2.75	0.00	2.75	0.00%
TX	Cypress Creek	1.65	0.00	1.65	0.00%
TX	Sandy Creek	1.65	0.00	1.65	0.00%
MI	Sanilac County Jail	8.20	0.01	8.34	0.12%
KS	Shawnee County Adult Detention Center	4.00	0.01	4.14	0.25%
KS	Shawnee County Juvenile Detention Center	4.00	0.01	4.14	0.25%
IA	Woodbury County Jail	3.95	0.01	4.09	0.25%
IA	Woodbury County Work Release	3.95	0.01	4.09	0.25%
UT	Davis County Jail	3.91	0.01	4.05	0.26%
OK	Del City Police Department	3.85	0.01	3.99	0.26%
TX	Collin County – All Locations	3.45	0.01	3.59	0.29%
TX	Tarrant County – All Locations	3.06	0.01	3.20	0.33%
MT	Jefferson County Detention Facility	2.99	0.01	3.13	0.33%
TN	Knox County Detention Facility	2.80	0.01	2.94	0.36%
TN	Knox County Jail	2.80	0.01	2.94	0.36%
TN	Knox County Work Release Center	2.80	0.01	2.94	0.36%
IA	Polk County	2.60	0.01	2.74	0.38%
CO	Denver County Jail	2.55	0.01	2.69	0.39%
CO	Downtown Detention Center	2.55	0.01	2.69	0.39%
TX	Andrews County Jail	2.45	0.01	2.59	0.41%
MN	Ramsey County Law Enforcement Center	2.15	0.01	2.29	0.47%
IL	Department of Corrections – All Locations	3.35	0.02	3.63	0.60%
NC	Franklin County Detention Center	1.38	0.01	1.52	0.72%
TN	Sumner County Sheriff And Jail	2.06	0.02	2.34	0.97%
FL	Clay County Jail	1.98	0.03	2.40	1.52%
MT	Lewis & Clark County Detention Center	2.95	0.05	3.65	1.69%
TN	Cheatham County Jail	2.24	0.05	2.94	2.23%
TX	Bastrop County Jail	4.62	0.12	6.30	2.60%
WI	Racine County Jail	3.60	0.10	5.00	2.78%
WI	Racine County Juvenile Detention Center	3.60	0.10	5.00	2.78%
OK	Davis CCA	3.60	0.11	5.14	3.06%
OR	Polk County Sheriff	2.87	0.09	4.13	3.14%
MA	Barnstable County Corrections Facility	3.10	0.10	4.50	3.23%
MA	Dukes County Jail	3.10	0.10	4.50	3.23%
MA	Worcester County Jail	3.10	0.10	4.50	3.23%

State	Facility Name	First Minute Rate (\$)	Sub. Minute Rate (\$)	15 Minute Rate (\$)	Second Minute to First Minute
MA	Suffolk County House Of Corrections	2.95	0.10	4.35	3.39%
MA	Suffolk County Jail	2.95	0.10	4.35	3.39%
AR	Department of Corrections – All Locations	3.12	0.12	4.80	3.85%
WI	Waupaca County Jail	5.20	0.20	8.00	3.85%
CO	Weld County – All Locations	3.38	0.13	5.20	3.85%
CO	Arapahoe County Sheriff	2.60	0.10	4.00	3.85%
MT	Broadwater County	3.02	0.12	4.70	3.97%
CO	Las Animas County Jail	2.49	0.10	3.89	4.02%
NH	Merrimack County Department of Corrections	1.62	0.07	2.60	4.32%
TN	Morgan County Jail	2.29	0.10	3.69	4.37%
TN	Hardin County Sheriff	2.20	0.10	3.60	4.55%
TX	La Salle County Jail	3.68	0.18	6.20	4.89%
MA	Ash Street Jail & Regional Lock Up	3.16	0.16	5.40	5.06%
MA	Bristol County Faunce Corner	3.16	0.16	5.40	5.06%
TX	Crystal City Correctional Center	4.90	0.25	8.40	5.10%
TX	Gray County Jail	5.22	0.27	9.00	5.17%
TX	Jack County Jail	5.22	0.27	9.00	5.17%
MI	Lansing Police Department	4.79	0.25	8.29	5.22%
UT	Iron County Jail	3.40	0.18	5.92	5.29%
CO	Gunnison County Jail	2.80	0.15	4.90	5.36%
MA	Berkshire County House Of Corrections	3.17	0.17	5.55	5.36%
MA	Berkshire County Jail	3.17	0.17	5.55	5.36%
NC	Johnston County Jail	1.11	0.06	1.95	5.41%
MA	Essex County – All Locations	2.65	0.15	4.75	5.66%
OH	Strongsville Police Department	2.65	0.15	4.75	5.66%
SC	Lexington County Jail	1.75	0.10	3.15	5.71%
UT	Beaver County Jail	3.46	0.20	6.26	5.78%
CO	Rio Grande County Jail	2.55	0.15	4.65	5.88%
IA	Appanoose County Jail	4.00	0.25	7.50	6.25%
KS	Sedgwick County – All Locations	1.60	0.10	3.00	6.25%
TN	Hamilton County Jail	1.60	0.10	3.00	6.25%
CO	Clear Creek County Jail	2.71	0.17	5.09	6.27%
KY	Clinton County Jail	3.21	0.21	6.15	6.54%
MA	Franklin County Jail	3.21	0.21	6.15	6.54%
IA	Clarke County Jail	3.75	0.25	7.25	6.67%
IA	Marion County Jail	3.75	0.25	7.25	6.67%
IA	Mitchell County Jail	3.75	0.25	7.25	6.67%
CO	Prowers County Jail	2.99	0.20	5.79	6.69%

State	Facility Name	First Minute Rate (\$)	Sub. Minute Rate (\$)	15 Minute Rate (\$)	Second Minute to First Minute
OH	Richland County Community Alternative Center	2.95	0.20	5.75	6.78%
CA	Monterey County Jail	2.50	0.17	4.88	6.80%
OK	Sand Springs City Police Department	3.23	0.22	6.31	6.81%
TX	Hamilton County Law Enforcement Center	5.12	0.35	10.02	6.84%
PA	Erie County Community Correctional Facility	1.88	0.13	3.70	6.91%
PA	Erie County Prison	1.88	0.13	3.70	6.91%
PA	Greene County Prison	2.15	0.15	4.25	6.98%
TX	Uvalde County	4.41	0.31	8.75	7.03%
IL	Alton City Police Department	3.82	0.27	7.60	7.07%
TX	Oldham County Jail	5.76	0.41	11.50	7.12%
TN	Scott County Jail Building 2	1.82	0.13	3.64	7.14%
IL	Granite City Jail	3.77	0.27	7.55	7.16%
TN	Henderson County Detention Center	2.09	0.15	4.19	7.18%
IA	Wapello County Jail	3.88	0.28	7.80	7.22%
CO	Southern Ute Indian Tribe	2.74	0.20	5.54	7.30%
VA	Northern Neck Regional Jail	2.70	0.20	5.50	7.41%
IL	Bond County Sheriff	3.91	0.29	7.97	7.42%
IL	Henry County Jail	3.62	0.27	7.40	7.46%
CO	Logan County Jail	3.02	0.23	6.24	7.62%
IL	Macoupin County Jail	3.90	0.30	8.10	7.69%
IL	Mason County Sheriff	3.80	0.30	8.00	7.89%
IL	Menard County Jail	3.80	0.30	8.00	7.89%
IL	Saline County Jail	3.80	0.30	8.00	7.89%
IL	Clark County Jail	3.66	0.29	7.72	7.92%
IL	Iroquois County Jail	3.66	0.29	7.72	7.92%
IL	Jersey County Jail	3.66	0.29	7.72	7.92%
IL	Mercer County Sheriff	3.66	0.29	7.72	7.92%
IL	Richland County Jail	3.66	0.29	7.72	7.92%
TX	Ector County Detention Center	5.38	0.43	11.40	7.99%
TX	Ector County Jail – CEC/CiviGenics	5.38	0.43	11.40	7.99%
WA	Yakima County Correctional Center	1.50	0.12	3.18	8.00%
WA	Yakima County Jail	1.50	0.12	3.18	8.00%
CO	Morgan County Jail	2.87	0.23	6.09	8.01%
FL	Seminole County Jail	2.99	0.24	6.35	8.03%
IL	Clay County Jail	3.81	0.31	8.15	8.14%
IL	Monroe County Jail	3.81	0.31	8.15	8.14%
TN	Weakley County Jail	1.84	0.15	3.94	8.15%
IA	Mahaska County Jail	3.92	0.32	8.40	8.16%

State	Facility Name	First Minute Rate (\$)	Sub. Minute Rate (\$)	15 Minute Rate (\$)	Second Minute to First Minute
IA	Webster County Jail	3.92	0.32	8.40	8.16%
IL	Greene County Sheriff	3.18	0.26	6.82	8.18%
IL	Boone County Jail	3.65	0.30	7.85	8.22%
IL	Crawford County Jail	3.65	0.30	7.85	8.22%
IL	Dewitt County Sheriff	3.65	0.30	7.85	8.22%
IL	Morgan County Jail	3.65	0.30	7.85	8.22%
IL	Warren County Jail	3.65	0.30	7.85	8.22%
CO	Lincoln County Sheriff	3.04	0.25	6.54	8.22%
IL	Fulton County Jail	3.16	0.26	6.80	8.23%
IL	Macon County Jail	3.16	0.26	6.80	8.23%
IL	Shelby County Jail	3.16	0.26	6.80	8.23%
NY	Livingston County Jail	4.82	0.40	10.42	8.30%
MN	Brooklyn Park Police Department	3.00	0.25	6.50	8.33%
OH	Carroll County Sheriff	3.00	0.25	6.50	8.33%
IL	Stephenson County Jail	3.82	0.32	8.30	8.38%
NC	Alamance County Detention Center	3.09	0.26	6.73	8.41%
NC	Alamance County Detention Center Annex	3.09	0.26	6.73	8.41%
TN	Bradley County Jail	1.53	0.13	3.35	8.50%
NC	Albemarle District Jail	2.82	0.24	6.18	8.51%
NC	Anson County Sheriff	2.82	0.24	6.18	8.51%
NC	Brunswick County Jail	2.82	0.24	6.18	8.51%
NC	Montgomery County Sheriff	2.82	0.24	6.18	8.51%
AR	Saline County Detention Center	3.99	0.34	8.75	8.52%
FL	Madison County Jail	2.58	0.22	5.66	8.53%
UT	Grand County Jail	3.51	0.30	7.71	8.55%
CO	Lake County Sheriff	3.01	0.26	6.65	8.64%
WA	Walla Walla County Jail	2.89	0.25	6.39	8.65%
IL	Lawrence County Jail	3.69	0.32	8.17	8.67%
IL	Whiteside County Jail	3.69	0.32	8.17	8.67%
IL	McDonough County Jail	3.67	0.32	8.15	8.72%
CO	Pueblo County Detention Center	2.74	0.24	6.10	8.76%
CO	Pueblo County Judicial Building	2.74	0.24	6.10	8.76%
TX	Montague County Sheriff – JSI	5.43	0.48	12.15	8.84%
MI	Dickinson County Jail	4.16	0.37	9.34	8.89%
IL	Will County – All Locations	3.26	0.29	7.32	8.90%
OH	Ashland County Jail	3.02	0.27	6.80	8.94%
CO	Routt County Jail	2.79	0.25	6.29	8.96%
CO	Elbert County Jail	2.90	0.26	6.54	8.97%

State	Facility Name	First Minute Rate (\$)	Sub. Minute Rate (\$)	15 Minute Rate (\$)	Second Minute to First Minute
TX	Hale County Sheriff	5.44	0.49	12.30	9.01%
IL	Collinsville City Police Department	3.21	0.29	7.27	9.03%
IL	Henderson County Sheriff	3.21	0.29	7.27	9.03%
IL	Washington County Jail	3.21	0.29	7.27	9.03%
CA	Sutter County Sheriff	3.31	0.30	7.51	9.06%
IL	Madison County Jail	3.85	0.35	8.75	9.09%
IL	Clinton County Jail	3.19	0.29	7.25	9.09%
IL	Perry County Jail	3.19	0.29	7.25	9.09%
UT	Carbon County Jail	3.30	0.30	7.50	9.09%
UT	Emery County Jail	3.30	0.30	7.50	9.09%
UT	Juab County Jail	3.30	0.30	7.50	9.09%
CA	Santa Cruz County Juvenile Hall	2.75	0.25	6.25	9.09%
PA	Elk County Jail	2.20	0.20	5.00	9.09%
TN	Jefferson County Detention Center	1.76	0.16	4.00	9.09%
TN	Jefferson County Workhouse	1.76	0.16	4.00	9.09%
TN	McMinn County Justice Center	1.76	0.16	4.00	9.09%
NC	Cleveland County Detention Facility	2.84	0.26	6.48	9.15%
NC	Cleveland County Jail Annex	2.84	0.26	6.48	9.15%
OK	Ottawa County Jail	3.60	0.33	8.22	9.17%
NY	Niagara County Correctional Facility	4.35	0.40	9.95	9.20%
PA	Potter County Jail	3.78	0.35	8.68	9.26%
CO	Mesa County Jail	2.48	0.23	5.70	9.27%
CO	Mesa County Jail Work Release	2.48	0.23	5.70	9.27%
IL	Woodford County Jail	3.86	0.36	8.90	9.33%
TX	Irving Police Department	3.86	0.36	8.90	9.33%
TX	Mesquite Police Department	3.86	0.36	8.90	9.33%
OR	Union County Sheriff	2.68	0.25	6.18	9.33%
UT	Tooele County Jail	3.31	0.31	7.65	9.37%
IL	Douglas County Jail	3.20	0.30	7.40	9.38%
CO	Fremont County Detention Center	3.08	0.29	7.14	9.42%
KS	Ellsworth County Jail	3.82	0.36	8.86	9.42%
ME	Cumberland County Jail	1.48	0.14	3.44	9.46%
ME	Hancock County Jail	1.48	0.14	3.44	9.46%
ME	Kennebec County Jail	1.48	0.14	3.44	9.46%
ME	Washington County Jail	1.48	0.14	3.44	9.46%
NC	Rutherford County Detention Center	2.85	0.27	6.63	9.47%
IL	Tazewell County Justice Center	4.00	0.38	9.32	9.50%
TN	Smith County Jail	1.87	0.18	4.39	9.63%

State	Facility Name	First Minute Rate (\$)	Sub. Minute Rate (\$)	15 Minute Rate (\$)	Second Minute to First Minute
NC	Dare County Detention Center	2.49	0.24	5.85	9.64%
IL	Adams County Jail	3.93	0.38	9.25	9.67%
TX	Midlothian City Jail	4.01	0.39	9.47	9.73%
NC	Cherokee County Detention Facility	2.86	0.28	6.78	9.79%
NJ	Passaic Co Jail - Work Release/Motor Pool	2.55	0.25	6.05	9.80%
NJ	Passaic County Jail	2.55	0.25	6.05	9.80%
CA	Trinity County Sheriff	3.05	0.30	7.25	9.84%
TX	Grand Prairie Police Department	5.38	0.53	12.80	9.85%
WY	Converse County Detention Center	3.55	0.35	8.45	9.86%
IL	Massac County Sheriff	3.24	0.32	7.72	9.88%
IL	Jackson County Jail	3.22	0.32	7.70	9.94%
IL	Union County Jail	3.22	0.32	7.70	9.94%
IL	Williamson County Jail	3.22	0.32	7.70	9.94%
IN	Decatur County Jail	2.41	0.24	5.77	9.96%
TX	Desoto City Jail	3.91	0.39	9.37	9.97%
TX	Duval County Jail	3.91	0.39	9.37	9.97%
TX	Kaufman Co. Jail	3.91	0.39	9.37	9.97%
TX	Menard County Sheriff	3.91	0.39	9.37	9.97%
TX	Trinity County Sheriff	3.91	0.39	9.37	9.97%
TX	Lamb County Jail	5.50	0.55	13.20	10.00%
CA	San Mateo County Youth Services Center	2.50	0.25	6.00	10.00%
TX	Wichita County Jail Annex	3.87	0.39	9.33	10.08%
NC	Macon County Detention Center	2.87	0.29	6.93	10.10%
NC	Scotland County Sheriff	2.87	0.29	6.93	10.10%
MI	Iosco County Sheriff	4.45	0.45	10.75	10.11%
KY	Rowan County Detention Center	3.06	0.31	7.40	10.13%
KS	Lincoln County Jail	3.45	0.35	8.35	10.14%
CO	Alamosa County Detention Center	2.66	0.27	6.44	10.15%
AR	Lake Village City Jail	3.90	0.40	9.50	10.26%
IL	Ogle County Jail	3.90	0.40	9.50	10.26%
PA	Clinton County Correctional Facility	1.95	0.20	4.75	10.26%
PA	Monroe County Correctional Facility	1.95	0.20	4.75	10.26%
OR	Clatsop County Sheriff	2.43	0.25	5.93	10.29%
WY	Park County Detention Center	3.57	0.37	8.75	10.36%
NC	Chowan County Detention Facility	2.99	0.31	7.33	10.37%
NC	Pender County Jail	2.60	0.27	6.38	10.38%
IL	Kendall County Jail	3.74	0.39	9.20	10.43%
TX	Kleberg County	4.69	0.49	11.55	10.45%

State	Facility Name	First Minute Rate (\$)	Sub. Minute Rate (\$)	15 Minute Rate (\$)	Second Minute to First Minute
KS	Smith County Jail	3.35	0.35	8.25	10.45%
WA	Wapato City Jail	3.35	0.35	8.25	10.45%
WY	Sublette County Detention Facility	3.35	0.35	8.25	10.45%
TX	Brownsville Police Department	3.92	0.41	9.66	10.46%
TX	Collingsworth County Jail	3.92	0.41	9.66	10.46%
TN	Campbell County Jail	1.89	0.20	4.69	10.58%
TN	Tipton County Jail	1.89	0.20	4.69	10.58%
TX	Jim Hogg County	3.66	0.39	9.12	10.66%
KS	Phillips County Jail	3.36	0.36	8.40	10.71%
KY	Community Transitional Services	1.68	0.18	4.20	10.71%
KY	Lewis County Detention Center	3.08	0.33	7.70	10.71%
CA	Modoc County Jail	2.80	0.30	7.00	10.71%
NC	New Hanover County Detention Center	2.80	0.30	7.00	10.71%
CO	Delta County Jail	2.79	0.30	6.99	10.75%
CO	Delta County Work Release	2.79	0.30	6.99	10.75%
IL	Logan County Jail	3.25	0.35	8.15	10.77%
TX	Hays County Law Enforcement Center	5.55	0.60	13.95	10.81%
CO	Park County Detention Center	2.96	0.32	7.44	10.81%
PA	Columbia County Prison	1.85	0.20	4.65	10.81%
CO	Teller County Jail	2.85	0.31	7.19	10.88%
TX	Plano Police Department	5.05	0.55	12.75	10.89%
MT	Anaconda Police Department	4.59	0.50	11.59	10.89%
MT	Beaverhead County Jail	4.59	0.50	11.59	10.89%
MT	Lake County Detention Facility	4.59	0.50	11.59	10.89%
MT	Ravalli County Sheriff	4.59	0.50	11.59	10.89%
KS	Saline County Jail	3.93	0.43	9.95	10.94%
MT	Chouteau County Detention Center	4.55	0.50	11.55	10.99%
MT	Toole County Jail	4.55	0.50	11.55	10.99%
SC	Pickens County Prison	2.00	0.22	5.08	11.00%
NC	Iredell County Annex	2.90	0.32	7.38	11.03%
NC	Iredell County Detention Center	2.90	0.32	7.38	11.03%
IL	Lee County Sheriff Department	3.26	0.36	8.30	11.04%
CO	Moffat County Jail	3.53	0.39	8.99	11.05%
TN	Greene County Detention Center	1.90	0.21	4.84	11.05%
TN	Greene County Jail Workhouse	1.90	0.21	4.84	11.05%
NC	Bladen County Sheriff	2.62	0.29	6.68	11.07%
TX	Coastal Bend	5.57	0.62	14.25	11.13%
WA	Asotin County	2.69	0.30	6.89	11.15%

State	Facility Name	First Minute Rate (\$)	Sub. Minute Rate (\$)	15 Minute Rate (\$)	Second Minute to First Minute
TX	Harris County – All Locations	4.03	0.45	10.33	11.17%
MT	Fergus County Sheriff	4.45	0.50	11.45	11.24%
KY	Leslie County Detention Center	3.10	0.35	8.00	11.29%
KY	Three Forks Regional Jail	3.10	0.35	8.00	11.29%
NC	Columbus County Detention Center	2.91	0.33	7.53	11.34%
NC	Hoke County Detention Center	2.91	0.33	7.53	11.34%
TX	Nueces County Residential Services	2.11	0.24	5.47	11.37%
PA	Union County Prison	3.95	0.45	10.25	11.39%
TN	Dekalb County Jail	2.37	0.27	6.15	11.39%
PA	Warren County Prison	2.26	0.26	5.90	11.50%
UT	Daggett County Jail	5.04	0.58	13.16	11.51%
TN	Cumberland County Justice Center	1.91	0.22	4.99	11.52%
TN	Hancock County Jail	1.91	0.22	4.99	11.52%
OH	Allen County Sheriff	3.11	0.36	8.15	11.58%
OH	Ashtabula City Police Department	3.11	0.36	8.15	11.58%
OH	Auglaize County Jail	3.11	0.36	8.15	11.58%
OH	Bedford Police Department	3.11	0.36	8.15	11.58%
OH	Belmont County Jail	3.11	0.36	8.15	11.58%
OH	Broadview Heights Police Department	3.11	0.36	8.15	11.58%
OH	Brown County Adult Detention Center	3.11	0.36	8.15	11.58%
OH	Central Ohio Youth Center	3.11	0.36	8.15	11.58%
OH	Clark County Jail	3.11	0.36	8.15	11.58%
OH	Clark County Juvenile Detention Center	3.11	0.36	8.15	11.58%
OH	Clinton County Adult Detention	3.11	0.36	8.15	11.58%
OH	Columbiana County Jail	3.11	0.36	8.15	11.58%
OH	Columbiana Minimum Security NAC	3.11	0.36	8.15	11.58%
OH	Corrections Commission Of NW Ohio	3.11	0.36	8.15	11.58%
OH	Crawford County Jail	3.11	0.36	8.15	11.58%
OH	Cuyahoga County Juvenile Detention Center	3.11	0.36	8.15	11.58%
OH	Darke County Jail	3.11	0.36	8.15	11.58%
OH	East Ohio Correctional Center	3.11	0.36	8.15	11.58%
OH	Erie County Jail	3.11	0.36	8.15	11.58%
OH	Fairborn City Police Department	3.11	0.36	8.15	11.58%
OH	Fairfield County – All Locations	3.11	0.36	8.15	11.58%
OH	Fayette County Sheriff	3.11	0.36	8.15	11.58%
OH	Findlay	3.11	0.36	8.15	11.58%
OH	Guernsey County Jail	3.11	0.36	8.15	11.58%
OH	Hancock County Sheriff	3.11	0.36	8.15	11.58%

State	Facility Name	First Minute Rate (\$)	Sub. Minute Rate (\$)	15 Minute Rate (\$)	Second Minute to First Minute
OH	Harrison County Jail	3.11	0.36	8.15	11.58%
OH	Holmes County Jail	3.11	0.36	8.15	11.58%
OH	Jackson County Correctional	3.11	0.36	8.15	11.58%
OH	Knox County Jail	3.11	0.36	8.15	11.58%
OH	Lawrence County Jail	3.11	0.36	8.15	11.58%
OH	Licking County Justice Center	3.11	0.36	8.15	11.58%
OH	Logan County Juvenile Detention Center	3.11	0.36	8.15	11.58%
OH	Logan County Sheriff	3.11	0.36	8.15	11.58%
OH	Lorain County Correctional Facility	3.11	0.36	8.15	11.58%
OH	Lorain Police Department	3.11	0.36	8.15	11.58%
OH	Maple Heights Police Department	3.11	0.36	8.15	11.58%
OH	Medina County Jail	3.11	0.36	8.15	11.58%
OH	Medina County Juvenile Detention Center	3.11	0.36	8.15	11.58%
OH	Meigs County Jail	3.11	0.36	8.15	11.58%
OH	Miami County Incarceration Facility	3.11	0.36	8.15	11.58%
OH	Miami County Jail	3.11	0.36	8.15	11.58%
OH	Middleport City Jail	3.11	0.36	8.15	11.58%
OH	Morrow County Sheriff	3.11	0.36	8.15	11.58%
OH	Multi-County Correctional Center	3.11	0.36	8.15	11.58%
OH	Multi-County Juvenile Detention Center	3.11	0.36	8.15	11.58%
OH	Noble County Sheriff	3.11	0.36	8.15	11.58%
OH	North Central Ohio Rehabilitation	3.11	0.36	8.15	11.58%
OH	North Royalton City Police Department	3.11	0.36	8.15	11.58%
OH	Northwest Community Correctional Center	3.11	0.36	8.15	11.58%
OH	Northwest Ohio Juvenile Detention Center	3.11	0.36	8.15	11.58%
OH	Parma Police Department	3.11	0.36	8.15	11.58%
OH	Pickaway County Jail	3.11	0.36	8.15	11.58%
OH	Portage County Jail	3.11	0.36	8.15	11.58%
OH	Portage/Geauga Juvenile Detention Center	3.11	0.36	8.15	11.58%
OH	Preble County Jail	3.11	0.36	8.15	11.58%
OH	Putnam County Sheriff	3.11	0.36	8.15	11.58%
OH	Richland County Jail	3.11	0.36	8.15	11.58%
OH	Ross County Jail	3.11	0.36	8.15	11.58%
OH	Scioto County	3.11	0.36	8.15	11.58%
OH	Scioto County Correctional Center	3.11	0.36	8.15	11.58%
OH	Southeast Ohio Regional Jail	3.11	0.36	8.15	11.58%
OH	Tri County Regional Jail	3.11	0.36	8.15	11.58%
OH	Van Wert County Correctional Facility	3.11	0.36	8.15	11.58%

State	Facility Name	First Minute Rate (\$)	Sub. Minute Rate (\$)	15 Minute Rate (\$)	Second Minute to First Minute
OH	Wayne County Discipline & Rehabilitation Center	3.11	0.36	8.15	11.58%
OH	Wayne County Jail	3.11	0.36	8.15	11.58%
OH	Western Ohio Regional Treatment	3.11	0.36	8.15	11.58%
OH	Wood County Jail	3.11	0.36	8.15	11.58%
OH	Wyandot County Sheriff	3.11	0.36	8.15	11.58%
NC	Caldwell County Detention Center	2.83	0.33	7.45	11.66%
TX	Nolan County Sheriff	5.61	0.66	14.85	11.76%
IA	Allamakee County Jail	4.25	0.50	11.25	11.76%
CA	Fresno County Juvenile Justice Center	2.55	0.30	6.75	11.76%
OH	Ashtabula County Jail	2.55	0.30	6.75	11.76%
IN	Benton County Jail	3.40	0.40	9.00	11.76%
IN	Cass-Pulaski Community Corrections	3.40	0.40	9.00	11.76%
IN	Jackson County Sheriff	3.40	0.40	9.00	11.76%
IN	Putnam County Jail	3.40	0.40	9.00	11.76%
IN	Switzerland County Jail	3.40	0.40	9.00	11.76%
IN	Tipton County Jail	3.40	0.40	9.00	11.76%
IN	Warren County Jail	3.40	0.40	9.00	11.76%
IN	Warrick County Sheriff	3.40	0.40	9.00	11.76%
UT	Wasatch County Jail	3.40	0.40	9.00	11.76%
VA	Bristol Virginia City Jail	3.40	0.40	9.00	11.76%
KY	Otter Creek Correctional Center – CCA	1.70	0.20	4.50	11.76%
TX	Burleson County Jail	3.99	0.47	10.57	11.78%
ID	Valley County Jail	3.46	0.41	9.20	11.85%
MN	Many Rivers Juvenile Detention Center	3.29	0.39	8.75	11.85%
MN	Olmsted County Adult Detention Center	3.29	0.39	8.75	11.85%
CO	Washington County Jail	3.28	0.39	8.74	11.89%
PA	Butler County Prison	2.27	0.27	6.05	11.89%
WY	Goshen County Detention Center	4.20	0.50	11.20	11.90%
TX	Zavala County Jail	4.11	0.49	10.97	11.92%
TX	Comal County Jail	4.09	0.49	10.95	11.98%
SD	Fall River County Jail	3.00	0.36	8.04	12.00%
WY	Washakie County Jail	2.90	0.35	7.80	12.07%
TX	Central Texas Treatment	5.63	0.68	15.15	12.08%
TN	Sequatchie County Sheriff	1.81	0.22	4.89	12.15%
NC	Union County Jail	2.55	0.31	6.89	12.16%
MN	McLeod County Jail	4.10	0.50	11.10	12.20%
MI	Alger County Sheriff	5.65	0.69	15.31	12.21%
MI	Ontonagon County Jail	5.65	0.69	15.31	12.21%

State	Facility Name	First Minute Rate (\$)	Sub. Minute Rate (\$)	15 Minute Rate (\$)	Second Minute to First Minute
MI	Presque Isle County Jail	5.65	0.69	15.31	12.21%
TX	Kaufman County Law Enforcement Center	4.01	0.49	10.87	12.22%
NC	Henderson County Detention Center	2.94	0.36	7.98	12.24%
NC	Rockingham County Jail	2.94	0.36	7.98	12.24%
NC	Rowan County Detention Center	2.94	0.36	7.98	12.24%
NC	Rowan County Detention Center Annex	2.94	0.36	7.98	12.24%
MI	Ingham County Correctional Facility	4.32	0.53	11.74	12.27%
ND	Dakota Women's Correctional And Rehabilitation Center	2.20	0.27	5.98	12.27%
NH	Carroll County Department of Corrections	1.71	0.21	4.65	12.28%
IL	Grundy County Sheriff	3.82	0.47	10.40	12.30%
KS	Meade County Jail	4.11	0.51	11.25	12.41%
OH	Ottawa County Detention Facility	2.90	0.36	7.94	12.41%
OH	Ottawa County Minimum Security	2.90	0.36	7.94	12.41%
TX	Taylor County Substance Abuse Treatment Center	4.02	0.50	11.02	12.44%
IA	Audubon County Jail	4.00	0.50	11.00	12.50%
IA	Crawford County Jail	4.00	0.50	11.00	12.50%
IA	Monona County Sheriff	4.00	0.50	11.00	12.50%
IA	Pocahontas County Jail	4.00	0.50	11.00	12.50%
IA	Pottawattamie County Jail	3.20	0.40	8.80	12.50%
OH	Shelby County Sheriff	2.88	0.36	7.92	12.50%
TX	Fannin County Jail	4.86	0.61	13.40	12.55%
TX	Fannin County Jail	4.86	0.61	13.40	12.55%
NC	Cabarrus County Sheriff	2.86	0.36	7.90	12.59%
MT	Pondera County Sheriff	5.30	0.67	14.68	12.64%
TX	San Patricio County Jail	4.03	0.51	11.17	12.66%
NH	Cheshire County Department of Corrections	1.50	0.19	4.16	12.67%
IL	Ford County Jail	3.86	0.49	10.72	12.69%
IL	Marshall County Sheriff	4.01	0.51	11.15	12.72%
IL	Stark County Jail	4.01	0.51	11.15	12.72%
KS	Butler County Corrections	4.01	0.51	11.15	12.72%
KS	Elk County Jail	4.01	0.51	11.15	12.72%
KS	Graham County Jail	4.01	0.51	11.15	12.72%
IL	Piatt County Sheriff	3.84	0.49	10.70	12.76%
UT	Garfield County Jail	3.68	0.47	10.26	12.77%
WA	Aberdeen Police Department	2.74	0.35	7.64	12.77%
WA	Toppenish City Jail	2.74	0.35	7.64	12.77%
MI	Arenac County Jail	5.40	0.69	15.06	12.78%

State	Facility Name	First Minute Rate (\$)	Sub. Minute Rate (\$)	15 Minute Rate (\$)	Second Minute to First Minute
MI	Bay County Law Enforcement Center	5.40	0.69	15.06	12.78%
MI	Delta County Jail	5.40	0.69	15.06	12.78%
MI	Gladwin County Jail	5.40	0.69	15.06	12.78%
MI	Gogebic County Sheriff	5.40	0.69	15.06	12.78%
MI	Grosse Pointe Park City	5.40	0.69	15.06	12.78%
MI	Holland Police Department	5.40	0.69	15.06	12.78%
MI	Houghton County Sheriff	5.40	0.69	15.06	12.78%
MI	Houghton County Work Release	5.40	0.69	15.06	12.78%
MI	Iron County Sheriff	5.40	0.69	15.06	12.78%
MI	Mackinac County Jail	5.40	0.69	15.06	12.78%
MI	Mason County Jail	5.40	0.69	15.06	12.78%
MI	Menominee County Jail	5.40	0.69	15.06	12.78%
MI	Niles Law Enforcement Complex	5.40	0.69	15.06	12.78%
MI	Schoolcraft County Jail	5.40	0.69	15.06	12.78%
MI	Washtenaw County Sheriff	5.40	0.69	15.06	12.78%
MI	Baraga County Jail	5.36	0.69	15.02	12.87%
MI	Montmorency Sheriff	5.36	0.69	15.02	12.87%
TX	Wood County Sheriff Department	4.33	0.56	12.17	12.93%
IL	White County Jail	4.02	0.52	11.30	12.94%
CO	Chaffee County Jail	3.32	0.43	9.34	12.95%
KY	Big Sandy Regional Detention Center	3.16	0.41	8.90	12.97%
MT	Butte Silverbow County Jail	4.70	0.61	13.24	12.98%
CO	Chief Ignacio Justice Center	4.31	0.56	12.15	12.99%
WA	Benton Franklin Juvenile Facility	4.54	0.59	12.80	13.00%
SD	Codington County Jail	3.61	0.47	10.19	13.02%
IA	Cedar County Sheriff	3.45	0.45	9.75	13.04%
IN	Daviess County Jail	3.45	0.45	9.75	13.04%
SC	Fairfield County Detention Center	1.15	0.15	3.25	13.04%
CO	Jefferson County Sheriff's Booking	2.53	0.33	7.15	13.04%
CO	Jefferson County Sheriff's Detention Facility	2.53	0.33	7.15	13.04%
WI	Vilas County Sheriff Jail	5.28	0.69	14.94	13.07%
TX	Hopkins County Jail	4.03	0.53	11.45	13.15%
CA	Del Norte County Sheriff	2.88	0.38	8.20	13.19%
NH	Sullivan County Department of Corrections	1.44	0.19	4.10	13.19%
SC	Greenville County Detention Center	2.50	0.33	7.12	13.20%
IL	Rock Island Sheriff	3.86	0.51	11.00	13.21%
NH	Belknap County House of Corrections	2.27	0.30	6.47	13.22%
NH	Coos County House Of Corrections	2.27	0.30	6.47	13.22%

State	Facility Name	First Minute Rate (\$)	Sub. Minute Rate (\$)	15 Minute Rate (\$)	Second Minute to First Minute
NV	Mineral County Sheriff	1.89	0.25	5.39	13.23%
KY	Louisville / Jefferson County Metro Govt – All Locations	1.73	0.23	4.95	13.29%
MT	Hill County Detention Facility	5.03	0.67	14.41	13.32%
TX	Grayson County	4.35	0.58	12.47	13.33%
TN	Chester County Jail	4.25	0.57	12.23	13.41%
NC	Jackson County Jail	2.98	0.40	8.58	13.42%
CO	Bent County Jail	2.60	0.35	7.50	13.46%
WA	Cowlitz County Juvenile Facility	2.60	0.35	7.50	13.46%
WA	Walla Walla County Juvenile	2.60	0.35	7.50	13.46%
MI	Alcona County Sheriff	5.11	0.69	14.77	13.50%
MI	Detroit Madison Center	5.11	0.69	14.77	13.50%
MI	Otsego County Jail	5.11	0.69	14.77	13.50%
WI	Florence County Sheriff	5.11	0.69	14.77	13.50%
WI	Pierce County Jail	5.11	0.69	14.77	13.50%
WI	Portage County Jail	5.11	0.69	14.77	13.50%
WI	Sawyer County Sheriff	5.11	0.69	14.77	13.50%
KY	Carroll County Detention Center	3.18	0.43	9.20	13.52%
WA	Cowlitz County Jail	4.73	0.64	13.69	13.53%
TX	Atascosa County Jail	4.19	0.57	12.17	13.60%
KY	Kentucky River Regional Jail	3.01	0.41	8.75	13.62%
MN	Goodhue Sheriff	4.17	0.57	12.15	13.67%
WA	Grandview Police Department	2.19	0.30	6.39	13.70%
TX	Willacy County Jail	4.08	0.56	11.92	13.73%
TN	Sullivan County Sheriff	4.22	0.58	12.34	13.74%
IN	Wabash County Jail	3.48	0.48	10.20	13.79%
CO	Summit County Jail	3.19	0.44	9.35	13.79%
MO	Ferguson City Police Department	2.90	0.40	8.50	13.79%
VA	Lebanon Community Correctional Center	4.99	0.69	14.65	13.83%
WI	Chippewa County Sheriff Department	5.33	0.74	15.69	13.88%
TN	Sullivan Correctional Facility Building 2	4.17	0.58	12.29	13.91%
MT	Cascade County	4.59	0.64	13.55	13.94%
MT	Cascade County Adult Detention Center	4.59	0.64	13.55	13.94%
MN	Wadena County Sheriff	2.15	0.30	6.35	13.95%
MI	Eaton County Sheriff	4.93	0.69	14.59	14.00%
MI	Jackson County Chanter Road Facility	4.93	0.69	14.59	14.00%
MI	Jackson County Jail	4.93	0.69	14.59	14.00%
CO	Huerfano County Jail	3.07	0.43	9.09	14.01%

State	Facility Name	First Minute Rate (\$)	Sub. Minute Rate (\$)	15 Minute Rate (\$)	Second Minute to First Minute
FL	Florida Civil Commitment Center	1.57	0.22	4.65	14.01%
TN	Hamblen County Jail	4.28	0.60	12.68	14.02%
MO	St Peters Police Department	3.21	0.45	9.51	14.02%
WY	Platte County Detention Center	3.49	0.49	10.35	14.04%
CA	Calaveras County Sheriff	2.91	0.41	8.65	14.09%
CA	Lompoc City Jail	3.61	0.51	10.75	14.13%
MT	Musselshell County Jail	4.88	0.69	14.54	14.14%
TN	Fentress County Justice Center	3.03	0.43	9.05	14.19%
TN	Fentress County Sheriff	3.03	0.43	9.05	14.19%
WI	Manitowoc County Jail	5.35	0.76	15.99	14.21%
AR	Conway County Detention Center	3.50	0.50	10.50	14.29%
AR	Johnson County Detention Center	3.50	0.50	10.50	14.29%
CA	Seal Beach Police Department	3.50	0.50	10.50	14.29%
CA	Yuba Sutter Juvenile Hall	3.50	0.50	10.50	14.29%
VA	Alexandria Detention Center	3.50	0.50	10.50	14.29%
ID	Nez Perce County Jail	1.75	0.25	5.25	14.29%
NV	Lander County Sheriff's	1.75	0.25	5.25	14.29%
CO	Otero County Jail	2.80	0.40	8.40	14.29%
WI	Green County Sheriff	4.81	0.69	14.47	14.35%
WI	La Crosse County Jail	4.81	0.69	14.47	14.35%
WI	Forest County Jail	5.36	0.77	16.14	14.37%
WI	Green Lake County Jail	5.36	0.77	16.14	14.37%
WI	Jefferson County Sheriff	5.36	0.77	16.14	14.37%
MT	Custer County Jail	4.78	0.69	14.44	14.44%
MT	Lincoln County Jail	4.78	0.69	14.44	14.44%
MT	Richland County Sheriff	4.78	0.69	14.44	14.44%
VA	Patrick County Jail	2.42	0.35	7.32	14.46%
CO	Montezuma County Jail	2.97	0.43	8.99	14.48%
ND	Heart Of America Correctional & Treatment Center	2.76	0.40	8.36	14.49%
MT	Flathead County Jail	4.62	0.67	14.00	14.50%
WI	Barron County Sheriff Department	5.37	0.78	16.29	14.53%
IN	Gibson County Jail	3.51	0.51	10.65	14.53%
ND	Bismarck Transition Center	1.17	0.17	3.55	14.53%
MT	Park County Detention Center	4.74	0.69	14.40	14.56%
TX	Upshur County Jail	4.12	0.60	12.52	14.56%
WA	Kittitas County Sheriff	4.79	0.70	14.59	14.61%
FL	Bradford County Jail	2.05	0.30	6.25	14.63%
FL	Broward County – All Locations	2.05	0.30	6.25	14.63%

State	Facility Name	First Minute Rate (\$)	Sub. Minute Rate (\$)	15 Minute Rate (\$)	Second Minute to First Minute
PA	Crawford County Correctional Facility	2.05	0.30	6.25	14.63%
WA	Clallam County Juvenile	2.05	0.30	6.25	14.63%
UT	San Juan County Jail	3.46	0.51	10.60	14.74%
VA	Roanoke City Jail	3.52	0.52	10.80	14.77%
WA	Kent Corrections Facility	1.76	0.26	5.40	14.77%
WI	Lincoln County Sheriff	5.19	0.77	15.97	14.84%
AR	Marion County Jail	4.64	0.69	14.30	14.87%
AR	Osceola Criminal Justice Center	4.64	0.69	14.30	14.87%
MI	Flint Police Department	4.64	0.69	14.30	14.87%
MI	Kent County Correctional Facility	4.64	0.69	14.30	14.87%
MI	Kent County Courthouse Holding	4.64	0.69	14.30	14.87%
MT	Fallon County Sheriff	4.64	0.69	14.30	14.87%
NE	Phelps County Correctional	4.64	0.69	14.30	14.87%
WI	Buffalo County Sheriff	4.64	0.69	14.30	14.87%
WI	Monroe County Sheriff	4.64	0.69	14.30	14.87%
WI	Oconto County Jail	4.70	0.70	14.50	14.89%
MO	Mississippi County Detention Center	3.82	0.57	11.80	14.92%
MT	CCCS – Watch East Treatment Center	1.34	0.20	4.14	14.93%
MT	Chippewa Cree Tribal Justice Center	1.34	0.20	4.14	14.93%
CO	Saguache County Jail	3.40	0.51	10.54	15.00%
IN	Montgomery County Sheriff	3.53	0.53	10.95	15.01%
NE	Saunders County Jail	2.53	0.38	7.85	15.02%
KS	Ford County Jail	5.50	0.83	17.12	15.09%
MO	Boone County Commission	2.65	0.40	8.25	15.09%
MO	Kansas City Police Dept. – All Locations	2.65	0.40	8.25	15.09%
NE	Adams County Jail	2.65	0.40	8.25	15.09%
WA	Forks City Police Department	3.30	0.50	10.30	15.15%
TX	Starr County Jail	4.15	0.63	12.97	15.18%
WY	Natrona County Detention Center	3.03	0.46	9.47	15.18%
IL	Mclean County Jail	3.95	0.60	12.35	15.19%
TN	Johnson City Jail	4.34	0.66	13.58	15.21%
VA	Newport News City – All Locations	4.66	0.71	14.60	15.24%
VA	Newport News City – Juvenile Detention	4.66	0.71	14.60	15.24%
WI	Sheboygan County Detention Center	3.15	0.48	9.87	15.24%
WI	Sheboygan County Jail	3.15	0.48	9.87	15.24%
KY	Meade County Jail	2.95	0.45	9.25	15.25%
VA	Central Virginia Regional Jail	3.54	0.54	11.10	15.25%
TX	Wise County Sheriff	4.16	0.64	13.12	15.38%

State	Facility Name	First Minute Rate (\$)	Sub. Minute Rate (\$)	15 Minute Rate (\$)	Second Minute to First Minute
ID	Custer County Jail	3.25	0.50	10.25	15.38%
ID	Idaho County Jail	3.25	0.50	10.25	15.38%
MN	Waseca County Jail	3.25	0.50	10.25	15.38%
IL	Vermilion County Jail	3.96	0.61	12.50	15.40%
NC	Richmond County Jail	2.66	0.41	8.40	15.41%
WI	Brown County Jail / Juvenile Detention	4.67	0.72	14.75	15.42%
WI	Brown County Work Release Center	4.67	0.72	14.75	15.42%
KY	Boyd County Detention Center	2.07	0.32	6.55	15.46%
MN	Washington County Jail	2.07	0.32	6.55	15.46%
NV	Humboldt County Sheriff	1.94	0.30	6.14	15.46%
MI	Cheboygan County Jail	5.23	0.81	16.57	15.49%
VA	Hampton City Jail	3.55	0.55	11.25	15.49%
CO	Montrose County Jail	2.83	0.44	8.99	15.55%
TX	Titus County Jail	4.17	0.65	13.27	15.59%
TX	Brazoria County Sheriff Jail	4.16	0.65	13.26	15.63%
WY	Teton County Detention Center	3.20	0.50	10.20	15.63%
CA	Butte County Jail	2.67	0.42	8.55	15.73%
CA	Butte County Juvenile Hall	2.67	0.42	8.55	15.73%
MO	Pike County Detention Center	2.67	0.42	8.55	15.73%
KY	Caldwell County Jail	1.78	0.28	5.70	15.73%
KY	Estill County Jail	1.78	0.28	5.70	15.73%
KY	Pulaski County Detention Center	1.78	0.28	5.70	15.73%
TX	Princeton Board Room	1.78	0.28	5.70	15.73%
MI	Emmet County Sheriff	5.25	0.83	16.87	15.81%
KS	Stevens County Jail	4.16	0.66	13.40	15.87%
NE	Kimball County Sheriff	4.16	0.66	13.40	15.87%
NE	Richardson County Jail	4.16	0.66	13.40	15.87%
FL	Volusia County Branch Jail	2.08	0.33	6.70	15.87%
FL	Volusia County Correctional Facility	2.08	0.33	6.70	15.87%
ME	Androscoggin County Jail	1.70	0.27	5.48	15.88%
NV	Eureka County Jail	1.95	0.31	6.29	15.90%
MI	Chippewa County Jail	5.52	0.88	17.84	15.94%
WI	Vernon County Sheriff	4.70	0.75	15.20	15.96%
IN	Steuben County Jail	3.57	0.57	11.55	15.97%
IN	Sullivan County Jail	3.57	0.57	11.55	15.97%
MI	Alpena County Jail	5.26	0.84	17.02	15.97%
SC	Abbeville County Detention Center	2.50	0.40	8.10	16.00%
SC	Aiken County Detention Center	2.50	0.40	8.10	16.00%

State	Facility Name	First Minute Rate (\$)	Sub. Minute Rate (\$)	15 Minute Rate (\$)	Second Minute to First Minute
SC	Cherokee County Jail	2.50	0.40	8.10	16.00%
SC	Chesterfield County Detention Center	2.50	0.40	8.10	16.00%
SC	Chesterfield County Work Camp	2.50	0.40	8.10	16.00%
SC	Darlington County Detention Center	2.50	0.40	8.10	16.00%
SC	Dillon County Detention Center	2.50	0.40	8.10	16.00%
SC	Edgefield County Jail	2.50	0.40	8.10	16.00%
SC	Greenwood County Jail	2.50	0.40	8.10	16.00%
SC	Horry County Detention Center	2.50	0.40	8.10	16.00%
SC	Jasper County Detention Center	2.50	0.40	8.10	16.00%
SC	Lancaster County Jail	2.50	0.40	8.10	16.00%
SC	Laurens County Jail	2.50	0.40	8.10	16.00%
SC	Oconee County Law Enforcement	2.50	0.40	8.10	16.00%
SC	Pickens County Detention Facility	2.50	0.40	8.10	16.00%
SC	Rock Hill City Jail	2.50	0.40	8.10	16.00%
SC	Union County Jail	2.50	0.40	8.10	16.00%
SC	Union County Prison Camp	2.50	0.40	8.10	16.00%
SC	York County Jail	2.50	0.40	8.10	16.00%
WY	Big Horn County Detention Center	3.81	0.61	12.35	16.01%
TN	Carter County Jail	3.62	0.58	11.74	16.02%
IL	St Clair County Jail	4.23	0.68	13.75	16.08%
WA	Island County Juvenile Detention Facility	3.11	0.50	10.11	16.08%
KS	MacPherson County Jail	5.27	0.85	17.17	16.13%
MT	Sanders County Jail	3.10	0.50	10.10	16.13%
TX	San Jacinto County Sheriff	4.20	0.68	13.72	16.19%
WI	Marathon County Jail	5.37	0.87	17.55	16.20%
WI	Marathon County Juvenile Facility	5.37	0.87	17.55	16.20%
IN	Rush County Jail	3.58	0.58	11.70	16.20%
KY	Hardin County Annex	1.79	0.29	5.85	16.20%
KY	Hardin County Detention Center	1.79	0.29	5.85	16.20%
KY	Hardin County Restricted Custody Building	1.79	0.29	5.85	16.20%
TX	Coryell County Sheriff	4.32	0.70	14.12	16.20%
MI	Gratiot County Jail	5.05	0.82	16.53	16.24%
TX	Hudspeth County Sheriff – JSI	4.31	0.70	14.11	16.24%
TX	Liberty County Jail	3.91	0.64	12.87	16.37%
WI	Iron County Sheriff	5.80	0.95	19.10	16.38%
IN	Greene County Sheriff	3.59	0.59	11.85	16.43%
FL	Escambia County Road Prison	2.53	0.42	8.41	16.60%
KS	Seward County	5.30	0.88	17.62	16.60%

State	Facility Name	First Minute Rate (\$)	Sub. Minute Rate (\$)	15 Minute Rate (\$)	Second Minute to First Minute
NE	Hall County Doc	4.74	0.79	15.80	16.67%
WI	Grant County Sheriff	4.74	0.79	15.80	16.67%
ND	Cass County Sheriff	3.60	0.60	12.00	16.67%
CO	Laplata County Jail	3.00	0.50	10.00	16.67%
KS	Rice County Law Enforcement Center	3.00	0.50	10.00	16.67%
MN	Sibley County Jail	3.00	0.50	10.00	16.67%
FL	Palm Beach County Main Detention	2.10	0.35	7.00	16.67%
MN	Carlton County Jail	2.10	0.35	7.00	16.67%
MN	Carver County Jail	2.10	0.35	7.00	16.67%
MN	Rice County Jail	2.10	0.35	7.00	16.67%
MN	Rice County Jail Annex	2.10	0.35	7.00	16.67%
KY	Barren County Detention Center	1.80	0.30	6.00	16.67%
KY	Woodford County Fiscal Ct	1.80	0.30	6.00	16.67%
MI	Shiawassee County Jail	5.09	0.85	16.99	16.70%
NV	Churchill County Sheriff	1.49	0.25	4.99	16.78%
TX	Jasper County Law Enforcement Center	3.93	0.66	13.17	16.79%
MO	Crawford County Jail	3.91	0.66	13.15	16.88%
IN	Jefferson County Jail	3.61	0.61	12.15	16.90%
FL	Alachua County Jail	2.36	0.40	7.96	16.95%
TX	Lasalle Regional Detention Center	4.24	0.72	14.32	16.98%
KS	Sumner County Jail	2.41	0.41	8.15	17.01%
TX	Lamar County Jail	3.64	0.62	12.32	17.03%
FL	Suwannee County Jail	2.11	0.36	7.15	17.06%
MI	Antrim County Sheriff	5.33	0.91	18.07	17.07%
MI	Grand Traverse County	3.62	0.62	12.30	17.13%
NV	Mesquite City Police Department	1.81	0.31	6.15	17.13%
NV	Storey County Sheriff	1.81	0.31	6.15	17.13%
NV	White Pine County Jail	1.81	0.31	6.15	17.13%
CA	Madera County Doc	3.32	0.57	11.30	17.17%
KY	Henderson County Community Services	3.32	0.57	11.30	17.17%
KY	Henderson County Detention Center	3.32	0.57	11.30	17.17%
TX	Wilson County Jail	4.25	0.73	14.47	17.18%
MI	Muskegon County Jail	5.64	0.97	19.22	17.20%
WY	Uinta County Detention Center	3.08	0.53	10.50	17.21%
CO	Broomfield City Jail	3.02	0.52	10.30	17.22%
MI	Montcalm Sheriff	5.70	0.99	19.56	17.37%
MN	Sherburne County Jail	2.24	0.39	7.70	17.41%
TX	Cooke County Jail	3.66	0.64	12.62	17.49%

State	Facility Name	First Minute Rate (\$)	Sub. Minute Rate (\$)	15 Minute Rate (\$)	Second Minute to First Minute
MO	Cape Girardeau Police Department	3.76	0.66	13.00	17.55%
NH	Rockingham County Department of Corrections	2.39	0.42	8.27	17.57%
MI	Midland County Jail	3.64	0.64	12.60	17.58%
KY	Nelson County Detention Center	1.82	0.32	6.30	17.58%
AR	Nevada County Jail	5.10	0.90	17.70	17.65%
FL	Jackson County Jail	2.43	0.43	8.45	17.70%
MI	Saginaw County Sheriff	5.73	1.02	20.01	17.80%
AR	Greene County Detention Facility	3.65	0.65	12.75	17.81%
IN	Lawrence County Sheriff	3.65	0.65	12.75	17.81%
FL	Okaloosa County Department Of Correctional Services	2.30	0.41	8.04	17.83%
FL	Baker County Detention Center	2.13	0.38	7.45	17.84%
CA	San Mateo County - Maguire Correctional	3.84	0.69	13.50	17.97%
MI	Isabella County Jail	5.39	0.97	18.97	18.00%
NV	Lyon County Jail	1.83	0.33	6.45	18.03%
FL	Taylor County Jail	2.27	0.41	8.01	18.06%
MN	Scott County Jail	2.26	0.41	8.00	18.14%
NE	Washington County Jail	2.75	0.50	9.75	18.18%
VA	Lancaster County Jail	2.75	0.50	9.75	18.18%
CA	Mariposa County Sheriff	3.79	0.69	13.45	18.21%
CA	Mono County Mammoth Lakes Courthouse	3.79	0.69	13.45	18.21%
CA	Mono County Sheriff	3.79	0.69	13.45	18.21%
CA	Monterey County Probation Office	3.79	0.69	13.45	18.21%
CA	Monterey County Youth Center	3.79	0.69	13.45	18.21%
CA	Trinity County Probation	3.79	0.69	13.45	18.21%
CA	Volunteers Of America - Los Angeles	3.79	0.69	13.45	18.21%
MI	Ionia County Jail	4.83	0.88	17.15	18.22%
FL	Marion County Jail	2.14	0.39	7.60	18.22%
ME	Franklin County Jail	1.75	0.32	6.23	18.29%
ME	Knox County Jail	1.75	0.32	6.23	18.29%
ME	Oxford County Jail	1.75	0.32	6.23	18.29%
ME	Penobscot County Jail	1.75	0.32	6.23	18.29%
ME	Piscataquis County Jail	1.75	0.32	6.23	18.29%
ME	Waldo County Jail	1.75	0.32	6.23	18.29%
ME	York County Jail	1.75	0.32	6.23	18.29%
WI	Eau Claire County Jail	3.88	0.71	13.82	18.30%
WI	Eau Claire County Jail – Main	3.88	0.71	13.82	18.30%
MI	Missaukee County Sheriff	5.41	0.99	19.27	18.30%

State	Facility Name	First Minute Rate (\$)	Sub. Minute Rate (\$)	15 Minute Rate (\$)	Second Minute to First Minute
OR	Klamath County Sheriff	2.67	0.49	9.53	18.35%
AR	Clay County Jail	4.85	0.90	17.45	18.56%
AR	Cross County Jail	4.85	0.90	17.45	18.56%
AR	White River Regional Juvenile	4.85	0.90	17.45	18.56%
CA	San Benito County Juvenile Department	4.85	0.90	17.45	18.56%
FL	Lake County Detention Center	2.15	0.40	7.75	18.60%
FL	Lake County Jail/Sheriff	2.15	0.40	7.75	18.60%
MI	Branch County Jail	5.79	1.08	20.91	18.65%
WI	Shawano County Jail	5.65	1.06	20.49	18.76%
WI	Shawano County Work Release	5.65	1.06	20.49	18.76%
IL	Pike County Jail	4.31	0.81	15.65	18.79%
MO	Arnold City Jail	3.51	0.66	12.75	18.80%
MO	Aurora City Police Department	3.51	0.66	12.75	18.80%
MO	Doniphan City Jail	3.51	0.66	12.75	18.80%
MO	Moline Acres City Police Department	3.51	0.66	12.75	18.80%
MO	Monett City Police Department	3.51	0.66	12.75	18.80%
MO	Northwoods City Police Department	3.51	0.66	12.75	18.80%
MO	Overland City Police Department	3.51	0.66	12.75	18.80%
MO	Sikeston Department Of Public Safety	3.51	0.66	12.75	18.80%
KY	Clay County Detention Center	1.85	0.35	6.75	18.92%
MI	Genesee County Jail	4.88	0.93	17.90	19.06%
MI	Ogemaw County Jail	5.47	1.05	20.17	19.20%
IL	Randolph County Jail	4.15	0.80	15.35	19.28%
WA	Island County Jail	3.47	0.67	12.85	19.31%
TX	Madison County Sheriff	4.37	0.85	16.27	19.45%
SD	Brown County Jail	3.28	0.64	12.24	19.51%
PA	Tioga County Prison	2.49	0.49	9.35	19.68%
UT	Millard County Jail	4.00	0.79	15.06	19.75%
MI	Marquette County Detention Center	5.87	1.16	22.11	19.76%
MI	Marquette Sheriff	5.87	1.16	22.11	19.76%
MI	Wexford County Jail	5.87	1.16	22.11	19.76%
IA	Bremer County Sheriff	3.74	0.74	14.10	19.79%
IN	Franklin County Jail	3.74	0.74	14.10	19.79%
IN	Hammond City Jail	3.74	0.74	14.10	19.79%
KY	Crittenden County Detention Center	1.87	0.37	7.05	19.79%
KY	Scott County Detention Center	1.87	0.37	7.05	19.79%
NV	Henderson Detention Center	1.87	0.37	7.05	19.79%
WI	Price County Jail	5.61	1.11	21.15	19.79%

State	Facility Name	First Minute Rate (\$)	Sub. Minute Rate (\$)	15 Minute Rate (\$)	Second Minute to First Minute
MI	Clinton County Jail	5.29	1.05	19.99	19.85%
AR	Garland County Detention Center	4.93	0.98	18.65	19.88%
MI	St Clair County Jail	5.52	1.10	20.92	19.93%
IN	Shelby County Sheriff	3.75	0.75	14.25	20.00%
NV	Pershing County Sheriff	1.25	0.25	4.75	20.00%
WI	Polk County Jail	5.53	1.11	21.07	20.07%
CA	Napa County DOC	3.88	0.78	14.80	20.10%
CA	Napa County Juvenile Probation	3.88	0.78	14.80	20.10%
WA	Sunnyside City Police Department	2.68	0.54	10.24	20.15%
MI	Lapeer County Courthouse	5.31	1.07	20.29	20.15%
MI	Lapeer County Jail	5.31	1.07	20.29	20.15%
MI	Benzie County Sheriff	5.90	1.19	22.56	20.17%
MI	Roscommon County Jail	5.90	1.19	22.56	20.17%
MI	Van Buren County Jail	5.90	1.19	22.56	20.17%
MO	Berkeley City Police Department	3.26	0.66	12.50	20.25%
MO	Festus City Police Department	3.26	0.66	12.50	20.25%
MO	Lee's Summit City Police Department	3.26	0.66	12.50	20.25%
WA	Marysville City Jail	2.37	0.48	9.09	20.25%
WA	Mason County Jail	2.37	0.48	9.09	20.25%
KS	Ottawa County Jail	3.77	0.77	14.55	20.42%
WY	Hot Springs County Detention Center	3.71	0.76	14.35	20.49%
WY	Weston County Detention Center	3.71	0.76	14.35	20.49%
TX	Ray D Anderson Community Corrections	4.42	0.91	17.16	20.59%
KY	Letcher County Jail	1.89	0.39	7.35	20.63%
SC	Hampton County Jail	1.58	0.33	6.20	20.89%
KY	Floyd County Detention Center	1.90	0.40	7.50	21.05%
MI	Clare County Jail	5.61	1.19	22.27	21.21%
CO	Aurora Municipal Court Administration	2.92	0.62	11.60	21.23%
IN	Lagrange County Sheriff	3.81	0.81	15.15	21.26%
IN	Morgan County Jail	3.81	0.81	15.15	21.26%
AZ	CCA Florence Correctional Center (VTDOC)	0.47	0.10	1.87	21.28%
NV	Douglas County - Lake Tahoe Jail	1.91	0.41	7.65	21.47%
NV	Douglas County - Minden Jail	1.91	0.41	7.65	21.47%
WY	Natrona County Juvenile Detention Center	1.91	0.41	7.65	21.47%
WV	Division of Juvenile Services – All Locations	1.70	0.37	6.88	21.76%
NE	Dakota County Jail	2.88	0.63	11.70	21.88%
NE	Dakota County Jail	2.88	0.63	11.70	21.88%
KY	Logan County Detention Center	1.92	0.42	7.80	21.88%

State	Facility Name	First Minute Rate (\$)	Sub. Minute Rate (\$)	15 Minute Rate (\$)	Second Minute to First Minute
MT	CCCS – Start	1.28	0.28	5.20	21.88%
KS	Labette County Jail	4.61	1.01	18.75	21.91%
MI	Ottawa County Jail	5.39	1.19	22.05	22.08%
KS	Dickinson County Jail	3.85	0.85	15.75	22.08%
WI	Adams County Jail	5.29	1.17	21.67	22.12%
MO	Phelps County Sheriff	2.89	0.64	11.85	22.15%
OK	Washington County Jail	3.60	0.80	14.80	22.22%
CA	Inyo County Jail	3.22	0.72	13.30	22.36%
WI	Columbia County Jail	5.31	1.19	21.97	22.41%
MO	St Francois County Jail	2.90	0.65	12.00	22.41%
WA	Clallam County Correctional Facility	2.44	0.55	10.14	22.54%
MO	Wright County Jail	3.24	0.74	13.60	22.84%
MT	CCCS – Nexus	1.30	0.30	5.50	23.08%
TN	Carroll County Jail	3.37	0.78	14.29	23.15%
AR	Sheridan City Detention Center	5.14	1.19	21.80	23.15%
MI	Newaygo County Jail	5.14	1.19	21.80	23.15%
MI	Ottawa County Juvenile Detention Center	5.14	1.19	21.80	23.15%
SD	Davison County Jail	2.14	0.50	9.14	23.36%
KS	Edwards County Jail	4.01	0.95	17.31	23.69%
KY	Warren County Regional Jail	1.97	0.47	8.55	23.86%
CA	Lassen County Jail – All Locations	4.08	0.98	17.80	24.02%
CA	Amador County Jail	3.30	0.80	14.50	24.24%
IN	Dubois County Security Center	3.30	0.80	14.50	24.24%
SC	Hill Finklea Detention Center	1.50	0.38	6.82	25.33%
PA	Wyoming County Correctional Facility	2.68	0.68	12.20	25.37%
KS	Barton County Jail	2.69	0.69	12.35	25.65%
AR	Arkansas County Jail	5.35	1.40	24.95	26.17%
AR	Baxter County Sheriff	5.35	1.40	24.95	26.17%
AR	Mississippi County Detention Center	5.35	1.40	24.95	26.17%
NV	Lincoln County Jail	2.04	0.54	9.60	26.47%
MO	St Genevieve County Jail	3.15	0.90	15.75	28.57%
MO	Jennings Adult Correctional Facility	4.01	1.16	20.25	28.93%
SC	Bamberg County Jail	0.95	0.28	4.87	29.47%
OK	Cherokee County Jail	3.60	1.10	19.00	30.56%
OK	Texas County Jail	3.60	1.10	19.00	30.56%
MO	Grundy County Detention Center	3.76	1.16	20.00	30.85%
SC	Clarendon County Jail	1.25	0.40	6.85	32.00%
SC	Sumter County Detention Center	1.25	0.40	6.85	32.00%

State	Facility Name	First Minute Rate (\$)	Sub. Minute Rate (\$)	15 Minute Rate (\$)	Second Minute to First Minute
MO	Scott County Jail	3.00	1.00	17.00	33.33%
TN	White County Jail	0.90	0.30	5.10	33.33%
IL	Kankakee County Jail	0.48	0.16	2.72	33.33%
KS	Osborne County Jail	2.13	0.75	12.63	35.21%
IN	White County Jail	0.79	0.29	4.85	36.71%
IN	Pulaski County Jail	0.85	0.35	5.75	41.18%
CA	Hemet City Police Department	2.18	0.95	15.48	43.58%
MT	Powell County Sheriff	1.50	0.67	10.88	44.67%
WI	Bayfield County Sheriff	1.00	0.50	8.00	50.00%
WI	Rusk County Jail	1.00	0.50	8.00	50.00%
MD	Queen Anne\`S County Detention Center	0.25	0.14	2.21	56.00%
OR	Jefferson County Sheriff	1.00	0.57	8.98	57.00%
MI	St Joseph County Jail	1.20	0.70	11.00	58.33%
TN	Decatur County Justice Complex	0.31	0.21	3.25	67.74%
TN	Silverdale Detention Facilities – CCA	0.31	0.21	3.25	67.74%
OH	Bedford Heights Police Department	0.35	0.24	3.71	68.57%
TN	Marion County Jail	0.32	0.22	3.40	68.75%
AZ	Ak-Chin Police Department	0.47	0.40	6.07	85.11%
MO	Jefferson County Jail	0.73	0.73	10.95	100.00%
IN	Newton County Jail	0.68	0.68	10.20	100.00%
MO	Cape Girardeau County Jail	0.61	0.61	9.15	100.00%
IN	Dekalb County Jail	0.60	0.60	9.00	100.00%
MI	Wayne County - Baird Detention Facility	0.50	0.50	7.50	100.00%
MI	Wayne County - Dickerson Detention Facility	0.50	0.50	7.50	100.00%
MI	Wayne County - Old Wayne County Jail	0.50	0.50	7.50	100.00%
MS	Adams County Jail	0.50	0.50	7.50	100.00%
MS	Amite County Jail	0.50	0.50	7.50	100.00%
MS	Chickasaw County Jail	0.50	0.50	7.50	100.00%
MS	Clarke County Jail	0.50	0.50	7.50	100.00%
MS	Copiah County Detention Center	0.50	0.50	7.50	100.00%
MS	Desoto County Adult Detention Center	0.50	0.50	7.50	100.00%
MS	Desoto County Expansion Facility	0.50	0.50	7.50	100.00%
MS	Forrest County Juvenile Detention Center	0.50	0.50	7.50	100.00%
MS	Forrest County Regional Jail	0.50	0.50	7.50	100.00%
MS	Greene County Jail	0.50	0.50	7.50	100.00%
MS	Grenada County Jail	0.50	0.50	7.50	100.00%
MS	Hancock County Adult Detention Center	0.50	0.50	7.50	100.00%
MS	Harrison County Detention Center	0.50	0.50	7.50	100.00%

State	Facility Name	First Minute Rate (\$)	Sub. Minute Rate (\$)	15 Minute Rate (\$)	Second Minute to First Minute
MS	Humphreys County Jail	0.50	0.50	7.50	100.00%
MS	Jackson County Adult Detention Center	0.50	0.50	7.50	100.00%
MS	Jasper County Jail	0.50	0.50	7.50	100.00%
MS	Jones County Jail	0.50	0.50	7.50	100.00%
MS	Jones County Juvenile Detention Center	0.50	0.50	7.50	100.00%
MS	Lafayette County Detention Center	0.50	0.50	7.50	100.00%
MS	Lauderdale County Detention Facility	0.50	0.50	7.50	100.00%
MS	Leake County Correctional Facility - County	0.50	0.50	7.50	100.00%
MS	Leake County Correctional Facility - State	0.50	0.50	7.50	100.00%
MS	Leflore County Jail	0.50	0.50	7.50	100.00%
MS	Lincoln County Jail	0.50	0.50	7.50	100.00%
MS	Lowndes County Adult Detention Center	0.50	0.50	7.50	100.00%
MS	Lowndes County Courthouse Holding Cell	0.50	0.50	7.50	100.00%
MS	Madison County Detention Center	0.50	0.50	7.50	100.00%
MS	Neshoba County Detention Center	0.50	0.50	7.50	100.00%
MS	Newton County Jail	0.50	0.50	7.50	100.00%
MS	Oktibbeha County Jail	0.50	0.50	7.50	100.00%
MS	Oktibbeha County Jail-Trustee Facility	0.50	0.50	7.50	100.00%
MS	Panola County Detention Center	0.50	0.50	7.50	100.00%
MS	Perry County Jail	0.50	0.50	7.50	100.00%
MS	Picayune City Jail	0.50	0.50	7.50	100.00%
MS	Pike County Detention Center	0.50	0.50	7.50	100.00%
MS	Prentiss County Jail	0.50	0.50	7.50	100.00%
MS	Scott County Jail	0.50	0.50	7.50	100.00%
MS	Tate County Jail- JSI	0.50	0.50	7.50	100.00%
MS	Tippah County Jail - JSI	0.50	0.50	7.50	100.00%
MS	Tunica County Sheriff - JSI	0.50	0.50	7.50	100.00%
MS	Union County Jail	0.50	0.50	7.50	100.00%
MS	Walthall County Jail - JSI	0.50	0.50	7.50	100.00%
MS	Warren County Jail	0.50	0.50	7.50	100.00%
MS	Warren County Juvenile Facility	0.50	0.50	7.50	100.00%
MS	Wayne County Jail	0.50	0.50	7.50	100.00%
MS	Webster County Jail	0.50	0.50	7.50	100.00%
MS	Yalobusha County Jail	0.50	0.50	7.50	100.00%
NY	New York City Department of Corrections	0.50	0.50	1.20	100.00%
NY	North Tonawanda Police Department	0.50	0.50	7.50	100.00%
NY	Ontario County Jail	0.50	0.50	7.50	100.00%
NY	Suffolk County Jail	0.50	0.50	7.50	100.00%

State	Facility Name	First Minute Rate (\$)	Sub. Minute Rate (\$)	15 Minute Rate (\$)	Second Minute to First Minute
NY	Suffolk County Jail / Yaphank	0.50	0.50	7.50	100.00%
OK	Diamondback Correctional Facility – CCA	0.50	0.50	4.00	100.00%
TX	Rockwall County Jail	0.50	0.50	7.50	100.00%
MI	Wayne County - Road Patrol Lockup Facility	0.48	0.48	7.20	100.00%
AZ	Cochise County - All Locations	0.47	0.47	7.05	100.00%
AZ	Greenlee County Sheriff	0.47	0.47	7.05	100.00%
AZ	Yuma County Juvenile Justice Center	0.47	0.47	7.05	100.00%
AZ	Apache County Jail	0.40	0.40	6.00	100.00%
FL	Hardee County Jail	0.35	0.35	5.25	100.00%
CA	San Diego County – All Locations	0.32	0.32	4.80	100.00%
TX	Fort Bend County Correctional Facility	0.32	0.32	4.80	100.00%
TX	Fort Bend County Juvenile Probation	0.32	0.32	4.80	100.00%
ID	Benewah County Jail	0.31	0.31	4.65	100.00%
UT	Utah County Jail	0.29	0.29	4.35	100.00%
SD	Pennington County Juvenile	0.28	0.28	4.20	100.00%
TX	Bensmihen	0.27	0.27	4.05	100.00%
TX	Dover	0.27	0.27	4.05	100.00%
TX	Farrar	0.27	0.27	4.05	100.00%
TX	Leboeuf	0.27	0.27	4.05	100.00%
TX	Nicholson	0.27	0.27	4.05	100.00%
TX	Rohr	0.27	0.27	4.05	100.00%
MO	Threads Training 2	0.26	0.26	3.90	100.00%
MO	Threads Training 3	0.26	0.26	3.90	100.00%
TX	Denton County – All Locations	0.26	0.26	3.90	100.00%
TX	Texas Department Of Criminal Justice	0.26	0.26	3.90	100.00%
CT	Department of Corrections – All Locations	0.25	0.25	3.75	100.00%
IA	Story County Jail	0.25	0.25	3.75	100.00%
LA	Berwick City Police Department	0.25	0.25	3.75	100.00%
LA	Cedarwood Manor	0.25	0.25	3.75	100.00%
LA	Cedarwood Manor Women's	0.25	0.25	3.75	100.00%
LA	Jefferson Parish (Gretna)	0.25	0.25	3.75	100.00%
LA	Kenner Police Department	0.25	0.25	3.75	100.00%
LA	Lafourche Parish – All Locations	0.25	0.25	3.75	100.00%
LA	Morehouse Parish – All Locations	0.25	0.25	3.75	100.00%
LA	Natchitoches Parish Work Center	0.25	0.25	3.75	100.00%
LA	Orleans Parish – All Locations	0.25	0.25	3.75	100.00%
LA	Slidell Police Department	0.25	0.25	3.75	100.00%
LA	Terrebonne Parish Criminal Justice Complex	0.25	0.25	3.75	100.00%

State	Facility Name	First Minute Rate (\$)	Sub. Minute Rate (\$)	15 Minute Rate (\$)	Second Minute to First Minute
LA	Terrebonne Parish Trustee	0.25	0.25	3.75	100.00%
MD	Garrett County Sheriff	0.25	0.25	3.75	100.00%
MD	Talbot County Detention Center	0.25	0.25	3.75	100.00%
MD	Worcester County Detention Center	0.25	0.25	3.75	100.00%
MN	Meeker County Jail	0.25	0.25	3.75	100.00%
NC	Madison County Detention Center	0.25	0.25	3.75	100.00%
UT	Summit County Jail	0.25	0.25	3.75	100.00%
CA	San Joaquin County Jail	0.24	0.24	3.60	100.00%
IN	Allen County Juvenile Justice Center	0.24	0.24	3.60	100.00%
IN	Bartholomew County Jail	0.24	0.24	3.60	100.00%
IN	Elkhart County – All Locations	0.24	0.24	3.60	100.00%
IN	Floyd County Jail	0.24	0.24	3.60	100.00%
IN	Hendricks County Work Release	0.24	0.24	3.60	100.00%
IN	Johnson County Community Corrections	0.24	0.24	3.60	100.00%
IN	Johnson County Sheriff	0.24	0.24	3.60	100.00%
IN	Kosciusko County Jail	0.24	0.24	3.60	100.00%
IN	Kosciusko County Work Release	0.24	0.24	3.60	100.00%
IN	Laporte County Community Corrections	0.24	0.24	3.60	100.00%
IN	Laporte County Jail	0.24	0.24	3.60	100.00%
IN	Marion County Juvenile Detention Center	0.24	0.24	3.60	100.00%
IN	Porter County Sheriff	0.24	0.24	3.60	100.00%
IN	Tippecanoe County Community Corrections	0.24	0.24	3.60	100.00%
IN	Vigo County Community Correctional Center	0.24	0.24	3.60	100.00%
IN	Vigo County Jail	0.24	0.24	3.60	100.00%
TX	Dallas County – All Locations	0.24	0.24	3.60	100.00%
VA	Blue Ridge Regional Jail Authority	0.23	0.23	3.45	100.00%
IA	Cass County Jail	0.22	0.22	3.30	100.00%
IL	Knox County Jail	0.22	0.22	3.30	100.00%
IN	Grant County – All Locations	0.22	0.22	3.30	100.00%
IN	Madison County Sheriff	0.22	0.22	3.30	100.00%
KY	Franklin County Fiscal Court	0.22	0.22	3.30	100.00%
MD	Dorchester County Detention Center	0.22	0.22	3.30	100.00%
NC	Avery County Sheriff	0.22	0.22	3.30	100.00%
OH	Mercer County Sheriff	0.22	0.22	3.30	100.00%
TX	Hall County Jail	0.22	0.22	3.30	100.00%
TX	Hays County Juvenile Facility	0.22	0.22	3.30	100.00%
UT	Cache County Jail	0.22	0.22	3.30	100.00%
VA	Southampton County Jail	0.22	0.22	3.30	100.00%

State	Facility Name	First Minute Rate (\$)	Sub. Minute Rate (\$)	15 Minute Rate (\$)	Second Minute to First Minute
VA	Southampton County Jail Farm	0.22	0.22	3.30	100.00%
WY	Crook County Detention Facility	0.22	0.22	3.30	100.00%
AK	Department of Corrections – All Locations	0.21	0.21	3.15	100.00%
AZ	CCA Central Arizona Detention Center	0.21	0.21	3.15	100.00%
AZ	CCA Eloy Detention Center	0.21	0.21	3.15	100.00%
AZ	CCA Florence Correctional Center	0.21	0.21	3.15	100.00%
AZ	San Luis Regional Detention Center	0.21	0.21	3.15	100.00%
FL	Columbia County Detention Facility	0.21	0.21	3.15	100.00%
FL	Sarasota County Jail	0.21	0.21	3.15	100.00%
KS	Leavenworth Detention Center – CCA	0.21	0.21	3.15	100.00%
KY	Department of Corrections – All Locations	0.21	0.21	3.15	100.00%
LA	Department of Corrections – All Locations	0.21	0.21	3.15	100.00%
MA	Middlesex Billerica Hoc	0.21	0.21	3.15	100.00%
MN	Northwest Regional Corrections Center	0.21	0.21	3.15	100.00%
MS	Adams County Correctional Center - CCA	0.21	0.21	3.15	100.00%
NJ	Cape May County Correctional Center	0.21	0.21	3.15	100.00%
OH	Northeast Ohio Correctional Center - CCA	0.21	0.21	3.15	100.00%
PA	Lancaster County Prison	0.21	0.21	3.15	100.00%
PA	Lancaster County Youth Intervention Center	0.21	0.21	3.15	100.00%
TN	West Tennessee Detention Facility – CCA	0.21	0.21	3.15	100.00%
TX	Bell County Central Jail	0.21	0.21	3.15	100.00%
TX	Bell County Loop Jail	0.21	0.21	3.15	100.00%
TX	Eden Detention Center – CCA	0.21	0.21	3.15	100.00%
TX	Limestone County Detention Center	0.21	0.21	3.15	100.00%
TX	Limestone Old County Jail	0.21	0.21	3.15	100.00%
TX	Rolling Plains Regional Jail & Detention Center	0.21	0.21	3.15	100.00%
TX	West Texas Detention Facility	0.21	0.21	3.15	100.00%
AR	Community Transitional Services - Pine Bluff	0.20	0.20	3.00	100.00%
CA	San Bernardino County – All Locations	0.20	0.20	3.00	100.00%
GA	Athens Clarke County Jail	0.19	0.19	2.85	100.00%
GA	Athens Clarke Diversion Center	0.19	0.19	2.85	100.00%
GA	Atkinson County Jail	0.19	0.19	2.85	100.00%
GA	Baldwin County Jail	0.19	0.19	2.85	100.00%
GA	Bibb County Annex - G Wing	0.19	0.19	2.85	100.00%
GA	Bibb County Main Jail	0.19	0.19	2.85	100.00%
GA	Bibb County New Jail	0.19	0.19	2.85	100.00%
GA	Brantley County Jail	0.19	0.19	2.85	100.00%
GA	Brooks County Jail	0.19	0.19	2.85	100.00%

State	Facility Name	First Minute Rate (\$)	Sub. Minute Rate (\$)	15 Minute Rate (\$)	Second Minute to First Minute
GA	Bryan County Sheriff	0.19	0.19	2.85	100.00%
GA	Bulloch County Sheriff	0.19	0.19	2.85	100.00%
GA	Catoosa County Jail	0.19	0.19	2.85	100.00%
GA	Chattooga County Jail	0.19	0.19	2.85	100.00%
GA	Clarke County Correctional Institution	0.19	0.19	2.85	100.00%
GA	Dougherty County Jail	0.19	0.19	2.85	100.00%
GA	Fannin County Jail	0.19	0.19	2.85	100.00%
GA	Grady County Jail	0.19	0.19	2.85	100.00%
GA	Harris County Prison	0.19	0.19	2.85	100.00%
GA	Jackson County Jail	0.19	0.19	2.85	100.00%
GA	Jefferson Correctional Institution	0.19	0.19	2.85	100.00%
GA	Jefferson County	0.19	0.19	2.85	100.00%
GA	Lincoln County Sheriff	0.19	0.19	2.85	100.00%
GA	Macon County Jail	0.19	0.19	2.85	100.00%
GA	Marion County Sheriff	0.19	0.19	2.85	100.00%
GA	McDuffie County Sheriff	0.19	0.19	2.85	100.00%
GA	McRae Correctional Facility – CCA	0.19	0.19	2.85	100.00%
GA	Oglethorpe County Jail	0.19	0.19	2.85	100.00%
GA	Richmond County Correctional Institution	0.19	0.19	2.85	100.00%
GA	Stephens County Jail	0.19	0.19	2.85	100.00%
GA	Stewart Detention Center – CCA	0.19	0.19	2.85	100.00%
GA	Tattnall County Sheriff	0.19	0.19	2.85	100.00%
GA	Tift County Law Enforcement Center	0.19	0.19	2.85	100.00%
GA	Troup County Jail	0.19	0.19	2.85	100.00%
GA	Walker County Sheriff	0.19	0.19	2.85	100.00%
GA	Wilkes County Sheriff	0.19	0.19	2.85	100.00%
GA	Wilkinson County Sheriff	0.19	0.19	2.85	100.00%
GA	Barrow County Sheriff	0.18	0.18	2.70	100.00%
GA	Clayton County Detention Center	0.18	0.18	2.70	100.00%
GA	Dekalb County Jail	0.18	0.18	2.70	100.00%
GA	Fayette County Jail	0.18	0.18	2.70	100.00%
GA	Fulton County - Alpharetta Annex	0.18	0.18	2.70	100.00%
GA	Fulton County - South Fulton Municipal Regional Jail	0.18	0.18	2.70	100.00%
GA	Fulton County Jail	0.18	0.18	2.70	100.00%
GA	Fulton County Jail - Marietta Annex	0.18	0.18	2.70	100.00%
GA	Gwinnett County Sheriff	0.18	0.18	2.70	100.00%
GA	Hall County Jail	0.18	0.18	2.70	100.00%
GA	Henry County - Annex	0.18	0.18	2.70	100.00%

State	Facility Name	First Minute Rate (\$)	Sub. Minute Rate (\$)	15 Minute Rate (\$)	Second Minute to First Minute
GA	Henry County Jail	0.18	0.18	2.70	100.00%
GA	Pike County Sheriff	0.18	0.18	2.70	100.00%
GA	Rockdale County Sheriff	0.18	0.18	2.70	100.00%
GA	Smyrna City Jail	0.18	0.18	2.70	100.00%
IL	Lake County Adult Correctional Facility	0.18	0.18	2.70	100.00%
OR	Multnomah County Detention Center	0.17	0.17	2.55	100.00%
OR	Multnomah County Inverness Jail	0.17	0.17	2.55	100.00%
OR	Multnomah County Juvenile Department	0.17	0.17	2.55	100.00%
VA	Hampton Roads Regional Jail	0.17	0.17	2.55	100.00%
AZ	Pinal County	0.16	0.16	2.40	100.00%
GA	Carroll County Jail	0.16	0.16	2.40	100.00%
IL	Kankakee County Detention Center	0.16	0.16	2.40	100.00%
LA	East Carroll Parish Female	0.16	0.16	2.40	100.00%
LA	East Carroll Parish Male	0.16	0.16	2.40	100.00%
LA	East Carroll Riverbend Detention Phase I	0.16	0.16	2.40	100.00%
TN	Hardeman County Correctional Center – CCA	0.16	0.16	2.40	100.00%
TN	Whiteville Correction Facility – CCA	0.16	0.16	2.40	100.00%
AZ	Salt River Pima Maricopa Indian Community	0.15	0.15	2.25	100.00%
NM	Chaves County Adult Detention Center	0.15	0.15	2.25	100.00%
NM	Cibola County Correctional Center – CCA	0.15	0.15	2.25	100.00%
NM	Curry County Detention Center	0.15	0.15	2.25	100.00%
NM	De Baca County Detention Center	0.15	0.15	2.25	100.00%
NM	Eddy County Adult Detention	0.15	0.15	2.25	100.00%
NM	Eddy County Adult Women Detention Center	0.15	0.15	2.25	100.00%
NM	Grant County Jail	0.15	0.15	2.25	100.00%
NM	Hidalgo County Detention Center	0.15	0.15	2.25	100.00%
NM	Hobbs Police Department City Jail	0.15	0.15	2.25	100.00%
NM	Lea County Detention Center – GEO	0.15	0.15	2.25	100.00%
NM	Los Alamos Police Department	0.15	0.15	2.25	100.00%
NM	Otero County Jail	0.15	0.15	2.25	100.00%
NM	Quay County Detention Center	0.15	0.15	2.25	100.00%
NM	Rio Arriba County Detention Facility - JSI	0.15	0.15	2.25	100.00%
NM	Roosevelt County Adult Detention Center	0.15	0.15	2.25	100.00%
NM	San Juan County Adult Detention Center	0.15	0.15	2.25	100.00%
NM	San Miguel County Detention Center	0.15	0.15	2.25	100.00%
NM	Sierra County Detention	0.15	0.15	2.25	100.00%
NM	Taos County Adult Detention Center	0.15	0.15	2.25	100.00%
NM	Torrance County Detention Facility – CCA	0.15	0.15	2.25	100.00%

State	Facility Name	First Minute Rate (\$)	Sub. Minute Rate (\$)	15 Minute Rate (\$)	Second Minute to First Minute
NM	Vigil Maldonado Detention Center	0.15	0.15	2.25	100.00%
WA	Pierce County Detention Corrections Center	0.15	0.15	2.25	100.00%
WA	Pierce County Juvenile Detention Center	0.15	0.15	2.25	100.00%
CA	Riverside County – All Locations	0.14	0.14	2.10	100.00%
FL	Department of Corrections – All Locations	0.14	0.14	2.10	100.00%
KY	Lexington Fayette Urban Detention	0.14	0.14	2.10	100.00%
MN	Hennepin County – All Locations	0.14	0.14	2.10	100.00%
NM	Lincoln County Detention Center	0.14	0.14	2.10	100.00%
TX	Travis County – All Locations	0.14	0.14	2.10	100.00%
IL	Cook County Facilities	0.13	0.13	1.95	100.00%
WA	King County – All Locations	0.13	0.13	1.95	100.00%
FL	Lake City Correctional Facility - CCA	0.12	0.12	1.80	100.00%
NM	Sandoval County Detention Center - JSI	0.12	0.12	1.80	100.00%
SC	Georgetown County Detention Center	0.12	0.12	1.80	100.00%
WI	Department of Corrections – All Locations	0.12	0.12	1.80	100.00%
WI	Juneau County Justice Center	0.12	0.12	1.80	100.00%
WI	Oneida County Jail	0.12	0.12	1.80	100.00%
MS	Tallahatchie County Correctional – CCA	0.10	0.10	1.50	100.00%
NM	Valencia County Detention Center	0.10	0.10	1.50	100.00%
TX	T. Don Hutto Residential Center - CCA	0.09	0.09	1.35	100.00%
ND	Department of Corrections – All Locations	0.08	0.08	1.20	100.00%
NM	Bernalillo County Metro Detention Center	0.08	0.08	1.20	100.00%
NM	Bernalillo County Youth Services Center	0.08	0.08	1.20	100.00%
NM	Guadalupe Correctional Facility - GEO	0.08	0.08	1.20	100.00%
NM	Lea Hobbs County - GEO	0.08	0.08	1.20	100.00%
NM	Department of Corrections – All Locations	0.08	0.08	1.20	100.00%
NM	NM Women's Correctional Facility – CCA	0.08	0.08	1.20	100.00%
NM	Northeastern NM Detention Facility – GEO	0.08	0.08	1.20	100.00%
NM	Santa Fe County Adult Detention Facility	0.08	0.08	1.20	100.00%
FL	Gadsden Correctional Facility - MTC	0.06	0.06	0.90	100.00%
PA	Department of Corrections – All Locations	0.06	0.06	0.90	100.00%
MO	Department of Corrections – All Locations	0.05	0.05	0.75	100.00%