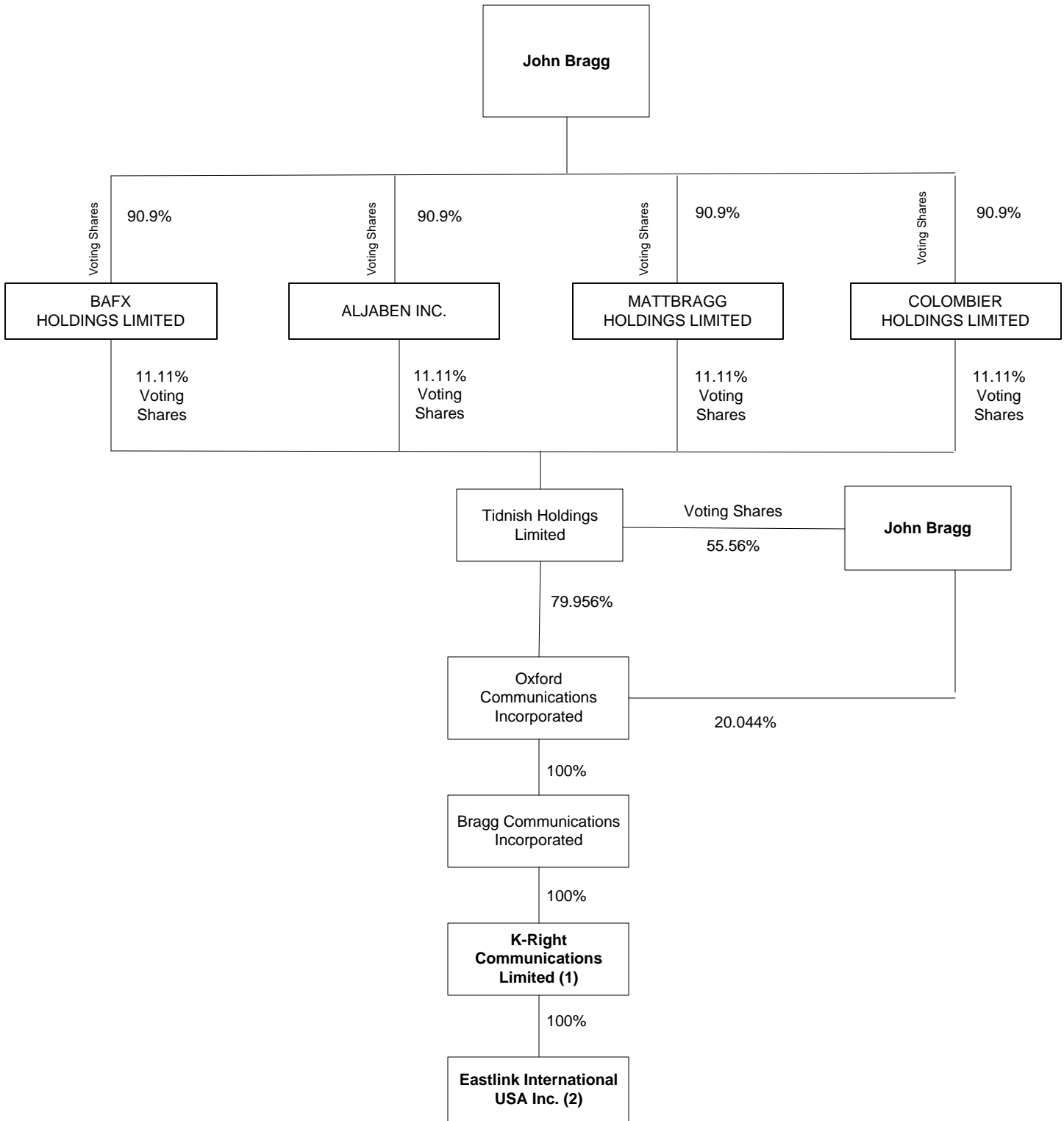


**Eastlink International USA Inc. (Section 214 Licensee)
Ownership Chart as at June 11, 2012**



Notes:

(1) In March 2012, K-Right Communications Limited (“K-Right,” a Canadian company) amalgamated with Eastlink International Holdings Inc. (“ELHI,” a Canadian company). K-Right is the name of the surviving entity.

(2) Section 214 Licensee. At the time Eastlink International USA Inc. (“ELUS”) filed its section 214 application it was directly held by ELHI. Following the amalgamation described in Note 1, it became a wholly-owned subsidiary of K-Right.