

*New org chart*

**Jodi Cooper**

---

**From:** David Krech  
**Sent:** Tuesday, April 12, 2011 2:11 PM  
**To:** Jodi Cooper  
**Subject:** FW: ~~ITC-ASG-2011-0407-00087~~; SCL-T/C-2011-0407-00011  
**Attachments:** Docum.pdf *T/C*

---

**From:** Robert Mazer [mailto:rmazer@rmazer.com]  
**Sent:** Tuesday, April 12, 2011 12:31 PM  
**To:** Adrienne Downs; David Krech  
**Subject:** ITC-ASG-2011-0407-00087; SCL-T/C-2011-0407-00011

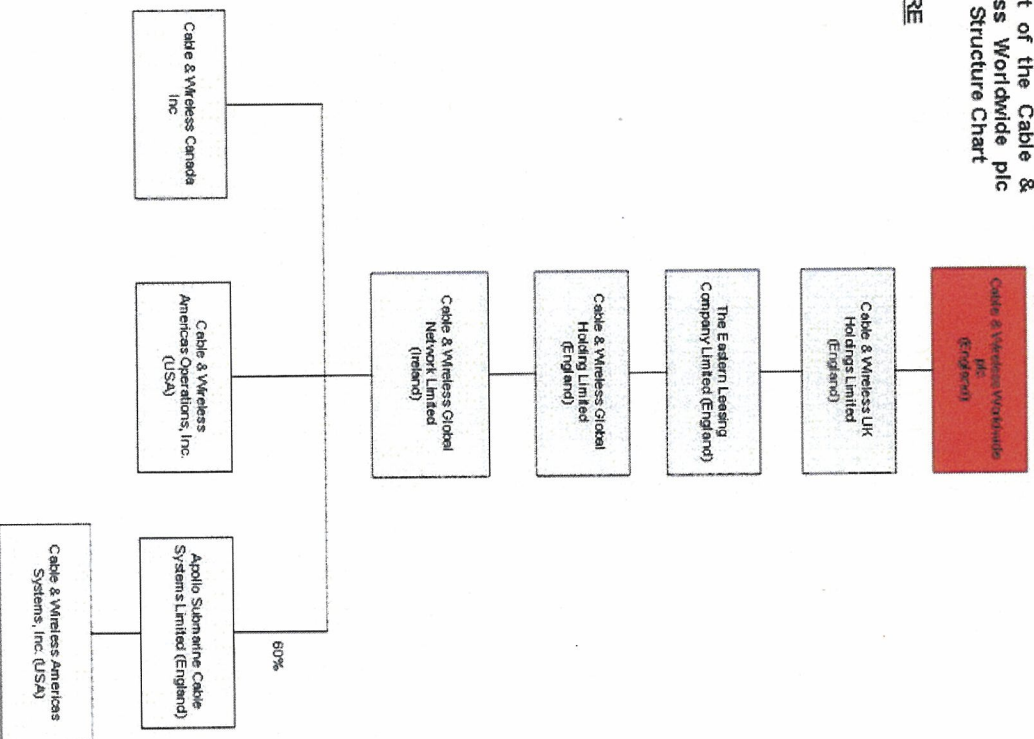
Adrienne and David, On Thursday April 6, 2011, I filed Pro Forma Transfer of Control applications for a Cable & Wireless Global LTD (Ireland) and Cable & Wireless Americas Systems, Inc. These applications were filed as a result of an internal Cable & Wireless Worldwide ("CWW") corporate reorganization. An attachment to these Pro Forma applications entitled Corporate Structure was an incorrect version of the CWW before and after corporate structure. Could you kindly remove the corporate structure attachment filed with the application and replace it with the attached correct corporate structure. The file numbers for these applications are captioned above. Could you kindly let me know when these changes has been made. If you have any questions please do not hesitate to contact me. Thank you very much. Bob Mazer

robert a. mazer  
4800 hamppden lane, ste 200  
bethesda, md 20814  
240.482.3710 (direct) 202.255.8505 (mobile)  
[rmazer@rmazer.com](mailto:rmazer@rmazer.com)

4/12/2011

**Extract of the Cable & Wireless Worldwide plc Group Structure Chart**

**BEFORE**



Extract of the Cable & Wireless Worldwide plc Group Structure Chart

AFTER

