

JODY-W3 photos

Topic :	JODY-W3 photos		
Doc.No:	UBXDOC-885269510-17923		
Revision	R01		
	Date:	Name	Signature
Created	19-Aug-2022	Franck Campagna	frca
Checked			
Released	22-Aug-2022	Franck Campagna	frca

We reserve all rights in this document and in the information contained therein. Reproduction, use or disclosure to third parties without express authority is strictly forbidden. © 20168 u-blox AG

1 Scope

This document provides internal and external photos of the JODY-W3 family modules. It is part of the equipment certification application issued to FCC and ISED. The photos have been taken with the RF shield mounted and removed.

2 FCC/IC ID reference

Ordering Code(s)	FCC ID	ISED ID
JODY-W374-00A	XPYJODY-W374	8595A-JODYW374
JODY-W374-00B	XPYJODY-W374	8595A-JODYW374
JODY-W377-00A	XPYJODY-W377	8595A-JODYW377
JODY-W377-00B	XPYJODY-W377	8595A-JODYW377

Table 1: FCC and IC IDs for different models of JODY-W3 series

3 Top view

3.1 Internal photos



Figure 1: JODY-W374-00A and JODY-W374-00B internal photo



Figure 2: JODY-W377-00A and JODY-W377-00B internal photo

3.2 External photos



Figure 4: JODY-W374-00A top view external photo



Figure 5: JODY-W377-00A top view external photo



Figure 6: JODY-W374-00B top view external photo



Figure 7: JODY-W377-00B top view external photo

4 Bottom view

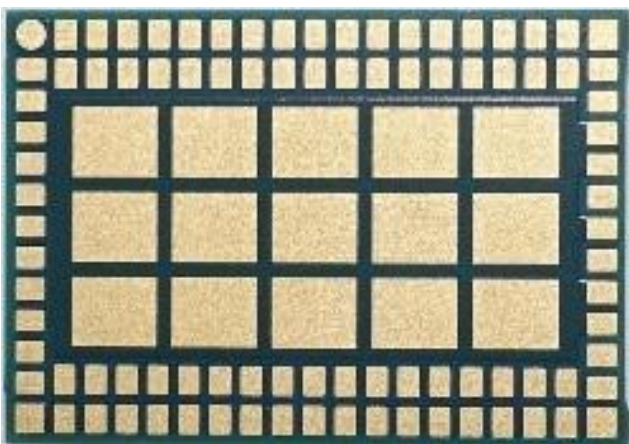


Figure 8: Bottom view of JODY-W37x-00x bottom view