

Measurement Report for Device

Device Under Test Properties

Model, Manufacturer	Dimensions [mm]	IMEI	DUT Type
Device,	70.0 x 50.0 x 8.0		5G Verification Source

Exposure Conditions

Phantom Section	Position, Test Distance [mm]	Frequency [MHz]	Conversion Factor
5G	FRONT, 10.00	10000.0	1.0

Hardware Setup

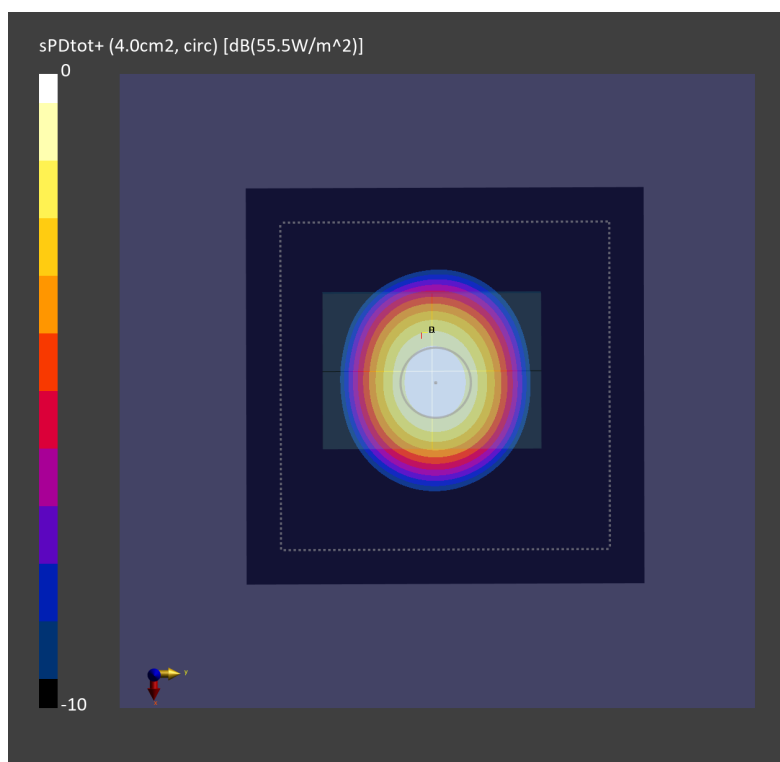
Phantom	Medium	Probe, Calibration Date	DAE, Calibration Date
mmWave - 1044	Air -	EUmmWV4 - SN9461_F1-55GHz, 2021-10-22	DAE4 Sn316, 2022-01-26

Scans Setup

Scan Type	5G Scan
Grid Extents [mm]	120.0 x 120.0
Grid Steps [lambda]	0.25 x 0.25
Sensor Surface [mm]	10.0

Measurement Results

Date	2022-08-22
Avg. Area [cm ²]	4.00
psPDn+ [W/m ²]	55.3
psPDtot+ [W/m ²]	55.5
H _{max} [A/m]	0.405
E _{max} [V/m]	156
max(Stot) [W/m ²]	62.5
Power Drift [dB]	0.01



Measurement Report for Device

Device Under Test Properties

Model, Manufacturer	Dimensions [mm]	IMEI	DUT Type
Device,	70.0 x 50.0 x 8.0		5G Verification Source

Exposure Conditions

Phantom Section	Position, Test Distance [mm]	Frequency [MHz]	Conversion Factor
5G	FRONT, 10.00	10000.0	1.0

Hardware Setup

Phantom	Medium	Probe, Calibration Date	DAE, Calibration Date
mmWave - xxxx	Air -	EUmmWV3 - SN9424_F1-55GHz, 2022-04-06	DAE4 Sn854, 2022-08-24

Scans Setup

Scan Type	5G Scan
Grid Extents [mm]	120.0 x 120.0
Grid Steps [lambda]	0.25 x 0.25
Sensor Surface [mm]	10.0

Measurement Results

Date	2022-11-09, 09:32
Avg. Area [cm ²]	4.00
psPDn+ [W/m ²]	55.1
psPDtot+ [W/m ²]	55.1
H _{max} [A/m]	0.399
E _{max} [V/m]	153
max(Stot) [W/m ²]	62.2
Power Drift [dB]	-0.01

