

FCC EMI TEST REPORT

REPORT NO. : FV642705
MODEL NO. : TL-WPA8630
RECEIVED DATE : Jul. 18, 2016
FINAL TESTED DATE : Oct. 13, 2016
ISSUED DATE : Nov. 02, 2016

TEST STANDARD : 47 CFR 15.113
FCC 04-245
Canada Standard ICES-006, Issue 2

Filing Type : Verification

APPLICANT : TP-Link Technologies Co., Ltd
ADDRESS : Building 24 (floors 1,3,4,5) and 28 (floors1-4)
Central Science and Technology Park,Nanshan,
Shenzhen,518057,China

Manufacturer : TP-Link Technologies Co., Ltd
ADDRESS : Building 24 (floors 1,3,4,5) and 28 (floors1-4)
Central Science and Technology Park,Nanshan,
Shenzhen,518057,China

ISSUED BY : SPORTON International Inc.
LAB ADDRESS : No. 52, Hwa Ya 1st Rd., Hwa Ya Technology Park,
Kwei-Shan Hsiang, Tao Yuan Hsien, Taiwan, R.O.C.

- The test result refers exclusively to the test presented test model / sample.
- Without written approval of SPORTON International Inc., the test report shall not be reproduced except in full.
- This test report is only applicable to U.S.A./ Canada.

Table of Contents

VERIFICATION OF COMPLIANCE	1
1. Summary of Test Results	2
2. General Description of Equipment under Test.....	3
3. Test Configuration of Equipment under Test	4
4. General Information of Test.....	10
5. Test of Conducted Emission	11
6. Test of Radiated Emission.....	16
7. List of Measuring Equipment Used	37
8. Uncertainty of Test Site	38
Appendix A. TEST PHOTOS	A1 ~ A4

History of This Test Report

REPORT NO.	VERSION	ISSUED DATE	Description
FV642705	Rev. 01	Nov. 02, 2016	Initial issue of report

VERIFICATION OF COMPLIANCE

EQUIPMENT NAME : AC1200 Wi-Fi Range Extender,AV1200 Powerline Edition
BRAND NAME : TP-Link
MODEL NO. : TL-WPA8630

APPLICANT : TP-Link Technologies Co., Ltd
ADDRESS : Building 24 (floors 1,3,4,5) and 28 (floors1-4) Central
Science and Technology Park,Nanshan,
Shenzhen,518057,China

FINAL TESTED DATE : Oct. 13, 2016

TEST STANDARD : 47 CFR 15.113
FCC 04-245
Canada Standard ICES-006, Issue 2

I **HEREBY** DECLARE THAT:

The measurements shown in this test report were made in accordance with the procedures given in **ANSI C63.4 – 2014 and CFR FCC Part15 Subpart B**.

The above equipment has been tested by **SPORTON International Inc. LAB.**, and found compliance with the requirement of the above standards. The test record, data evaluation & Equipment Under Test (EUT) configurations represented herein are true and accurate accounts of the measurements of the sample's EMI characteristics under the conditions specified in this report.



Beck Wu
SPORTON INTERNATIONAL INC.

1. Summary of Test Results

After estimating all the combination of every test mode, the result shown as below is the worst case.

The EUT has been tested according to the following specifications.

Applicable Standard: CFR FCC Part15 Subpart B and Canada Standard ICES-006, Issue 2				
Test Standard	IC Test Standard	Test Type	Result	Remarks
15.107(c)(2)	5.2.2	AC Power Port Conducted emission test 0.535 MHz to 1.705 MHz	PASS	Meet minimum passing margin is -24.90dB at 0.5611MHz.
15.107(c)(3) 15.109(e) 15.113(e)	5.3	Radiated emission test 9 kHz to 1,000 MHz	PASS	Meet the requirements.

2. General Description of Equipment under Test

Product Detail	
Equipment Name	AC1200 Wi-Fi Range Extender,AV1200 Powerline Edition
Model No.	TL-WPA8630
Brand Name	TP-Link
Power Supply	Internal Power Supply

2.1. Feature of Equipment under Test

1. The EUT supports 2.4GHz/5GHz wireless function.
2. Accessories: N/A
3. For a more detailed features description, please refer to the manufacturer's specifications or the User's Manual.

3. Test Configuration of Equipment under Test

3.1. Test Mode

The following table is a list of the test modes shown in this test report.

All test items	
Test Mode	Description
1	Normal Link (with data transmit)

3.2. Description of Support Units

The EUT has been tested as an independent unit together with other necessary accessories or support units. The following support units or accessories were used to form a representative test configuration during the tests.

Support Unit	Brand	Model	FCC ID
NB*4	DELL	E6430	DoC
AC1200 Wi-Fi Range Extender,AV1200 Powerline Edition (Device)	TP-LINK	TL-WPA8630	TE7WPA8630

3.3. EUT Operation Condition

During the test, the following programs under WIN 7 were executed:

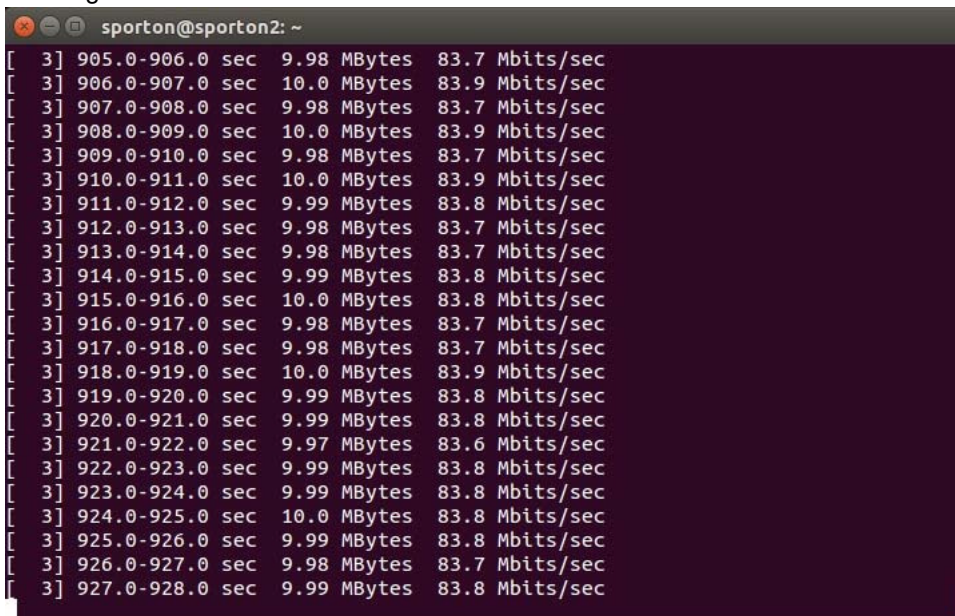
The remote notebooks executed “ping.exe” to link with the EUT and the device to maintain the connection by LAN and WLAN.

The remote notebook executed “iperf” to link with the EUT to traffic packet data generated software and keep maximum traffic load by LAN.

The EUT and the device were connected through power network.

Traffic for Radiated Emissions only

Building 1



```
sporton@sporton2: ~
[ 3] 905.0-906.0 sec  9.98 MBytes  83.7 Mbits/sec
[ 3] 906.0-907.0 sec  10.0 MBytes  83.9 Mbits/sec
[ 3] 907.0-908.0 sec  9.98 MBytes  83.7 Mbits/sec
[ 3] 908.0-909.0 sec  10.0 MBytes  83.9 Mbits/sec
[ 3] 909.0-910.0 sec  9.98 MBytes  83.7 Mbits/sec
[ 3] 910.0-911.0 sec  10.0 MBytes  83.9 Mbits/sec
[ 3] 911.0-912.0 sec  9.99 MBytes  83.8 Mbits/sec
[ 3] 912.0-913.0 sec  9.98 MBytes  83.7 Mbits/sec
[ 3] 913.0-914.0 sec  9.98 MBytes  83.7 Mbits/sec
[ 3] 914.0-915.0 sec  9.99 MBytes  83.8 Mbits/sec
[ 3] 915.0-916.0 sec  10.0 MBytes  83.8 Mbits/sec
[ 3] 916.0-917.0 sec  9.98 MBytes  83.7 Mbits/sec
[ 3] 917.0-918.0 sec  9.98 MBytes  83.7 Mbits/sec
[ 3] 918.0-919.0 sec  10.0 MBytes  83.9 Mbits/sec
[ 3] 919.0-920.0 sec  9.99 MBytes  83.8 Mbits/sec
[ 3] 920.0-921.0 sec  9.99 MBytes  83.8 Mbits/sec
[ 3] 921.0-922.0 sec  9.97 MBytes  83.6 Mbits/sec
[ 3] 922.0-923.0 sec  9.99 MBytes  83.8 Mbits/sec
[ 3] 923.0-924.0 sec  9.99 MBytes  83.8 Mbits/sec
[ 3] 924.0-925.0 sec  10.0 MBytes  83.8 Mbits/sec
[ 3] 925.0-926.0 sec  9.99 MBytes  83.8 Mbits/sec
[ 3] 926.0-927.0 sec  9.98 MBytes  83.7 Mbits/sec
[ 3] 927.0-928.0 sec  9.99 MBytes  83.8 Mbits/sec
```

Building 2

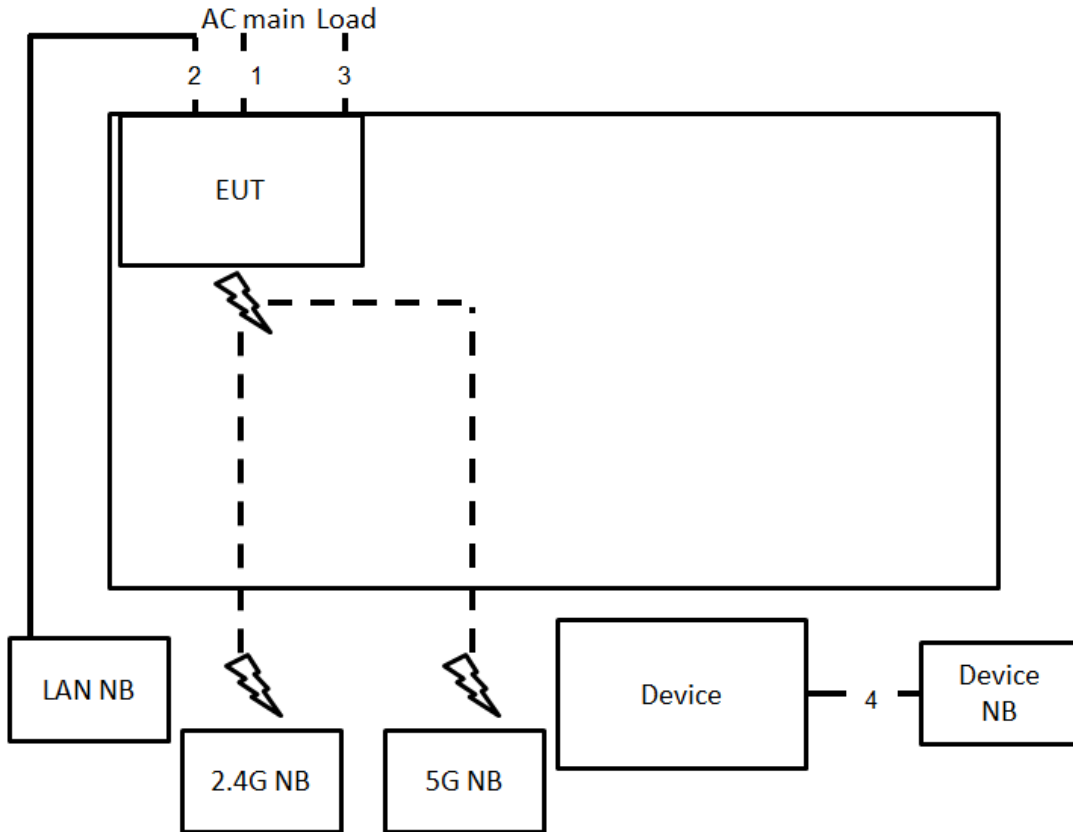
```
sporton@sporton2: ~
[ 3] 933.0-934.0 sec 9.98 MBytes 83.7 Mbits/sec
[ 3] 934.0-935.0 sec 9.99 MBytes 83.8 Mbits/sec
[ 3] 935.0-936.0 sec 10.0 MBytes 83.9 Mbits/sec
[ 3] 936.0-937.0 sec 9.98 MBytes 83.7 Mbits/sec
[ 3] 937.0-938.0 sec 10.0 MBytes 83.8 Mbits/sec
[ 3] 938.0-939.0 sec 9.98 MBytes 83.7 Mbits/sec
[ 3] 939.0-940.0 sec 9.99 MBytes 83.8 Mbits/sec
[ 3] 940.0-941.0 sec 10.0 MBytes 83.9 Mbits/sec
[ 3] 941.0-942.0 sec 9.97 MBytes 83.6 Mbits/sec
[ 3] 942.0-943.0 sec 9.99 MBytes 83.8 Mbits/sec
[ 3] 943.0-944.0 sec 9.99 MBytes 83.8 Mbits/sec
[ 3] 944.0-945.0 sec 9.99 MBytes 83.8 Mbits/sec
[ 3] 945.0-946.0 sec 9.98 MBytes 83.7 Mbits/sec
[ 3] 946.0-947.0 sec 9.98 MBytes 83.7 Mbits/sec
[ 3] 947.0-948.0 sec 9.99 MBytes 83.8 Mbits/sec
[ 3] 948.0-949.0 sec 10.0 MBytes 83.9 Mbits/sec
[ 3] 949.0-950.0 sec 9.98 MBytes 83.8 Mbits/sec
[ 3] 950.0-951.0 sec 9.98 MBytes 83.7 Mbits/sec
[ 3] 951.0-952.0 sec 9.99 MBytes 83.8 Mbits/sec
[ 3] 952.0-953.0 sec 9.98 MBytes 83.7 Mbits/sec
[ 3] 953.0-954.0 sec 9.98 MBytes 83.7 Mbits/sec
[ 3] 954.0-955.0 sec 10.0 MBytes 83.9 Mbits/sec
[ 3] 955.0-956.0 sec 9.99 MBytes 83.8 Mbits/sec
```

Building 3

```
sporton@sporton2: ~
[ 3] 952.0-953.0 sec 9.98 MBytes 83.7 Mbits/sec
[ 3] 953.0-954.0 sec 9.98 MBytes 83.7 Mbits/sec
[ 3] 954.0-955.0 sec 10.0 MBytes 83.9 Mbits/sec
[ 3] 955.0-956.0 sec 9.99 MBytes 83.8 Mbits/sec
[ 3] 956.0-957.0 sec 9.97 MBytes 83.6 Mbits/sec
[ 3] 957.0-958.0 sec 10.0 MBytes 83.9 Mbits/sec
[ 3] 958.0-959.0 sec 9.97 MBytes 83.6 Mbits/sec
[ 3] 959.0-960.0 sec 9.99 MBytes 83.8 Mbits/sec
[ 3] 960.0-961.0 sec 10.0 MBytes 83.9 Mbits/sec
[ 3] 961.0-962.0 sec 9.97 MBytes 83.7 Mbits/sec
[ 3] 962.0-963.0 sec 10.0 MBytes 83.8 Mbits/sec
[ 3] 963.0-964.0 sec 9.99 MBytes 83.8 Mbits/sec
[ 3] 964.0-965.0 sec 9.97 MBytes 83.7 Mbits/sec
[ 3] 965.0-966.0 sec 10.0 MBytes 83.8 Mbits/sec
[ 3] 966.0-967.0 sec 9.99 MBytes 83.8 Mbits/sec
[ 3] 967.0-968.0 sec 9.97 MBytes 83.6 Mbits/sec
[ 3] 968.0-969.0 sec 9.99 MBytes 83.8 Mbits/sec
[ 3] 969.0-970.0 sec 10.0 MBytes 83.8 Mbits/sec
[ 3] 970.0-971.0 sec 9.98 MBytes 83.7 Mbits/sec
[ 3] 971.0-972.0 sec 10.0 MBytes 83.9 Mbits/sec
[ 3] 972.0-973.0 sec 9.98 MBytes 83.7 Mbits/sec
[ 3] 973.0-974.0 sec 9.98 MBytes 83.7 Mbits/sec
[ 3] 974.0-975.0 sec 9.99 MBytes 83.8 Mbits/sec
```

3.4. Connection Diagram of Test System

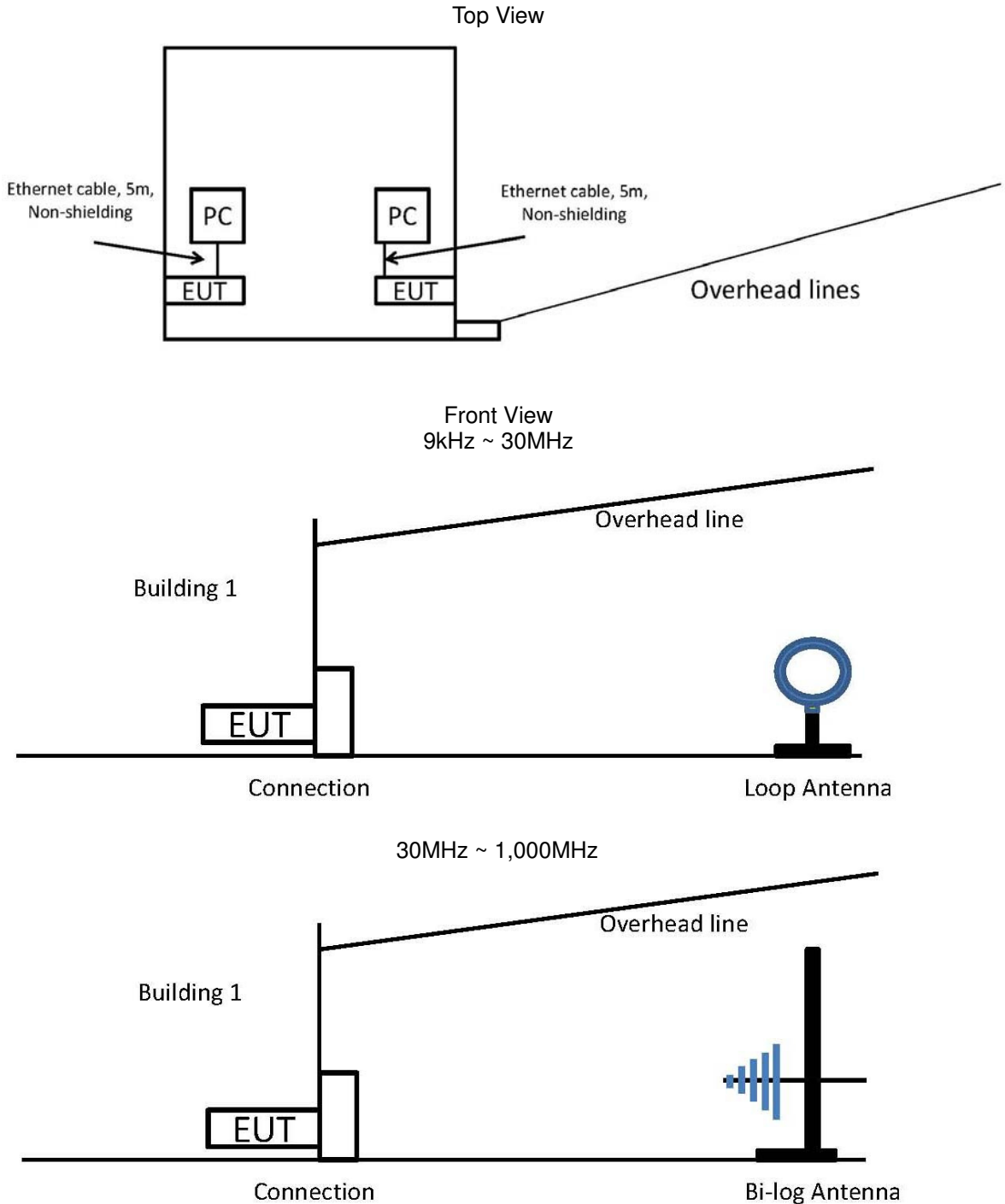
3.4.1. AC Power Line Conduction Emissions Test Configuration



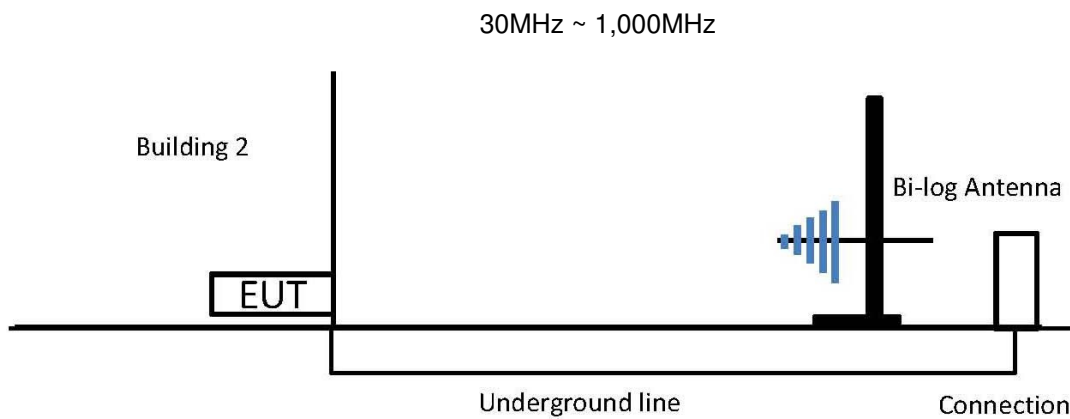
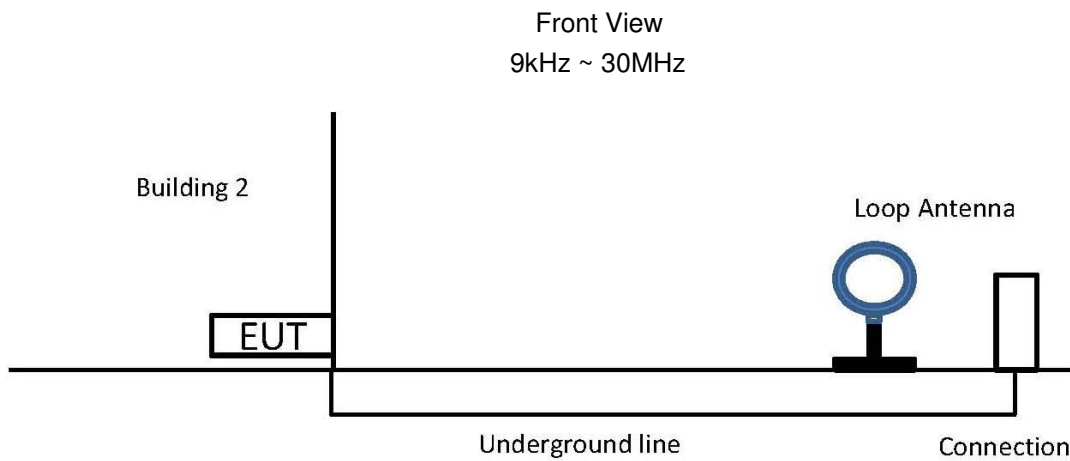
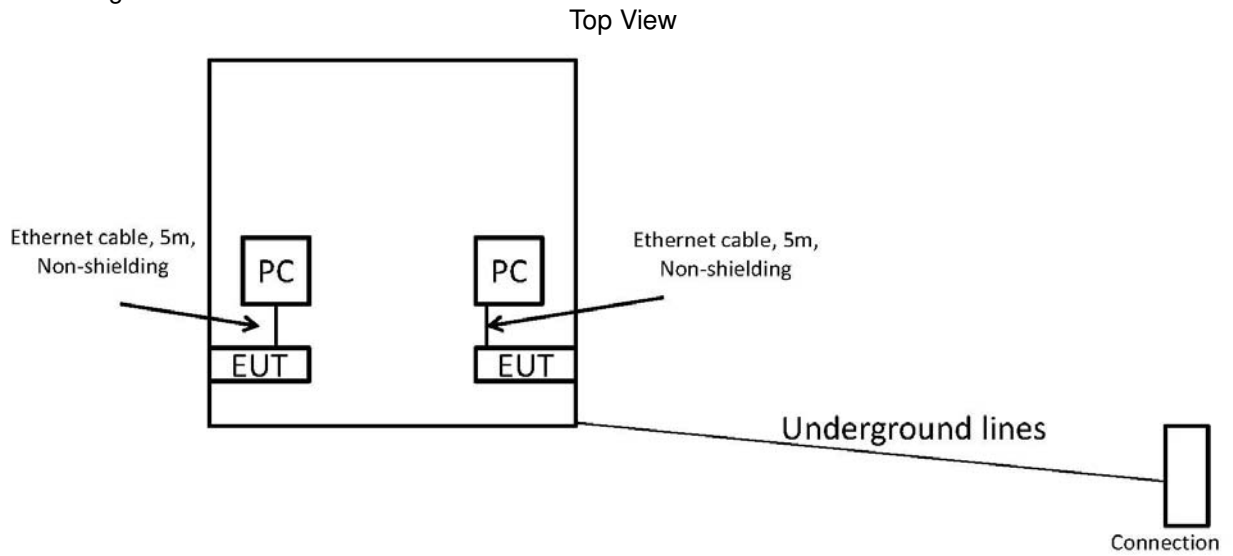
Item	Connection	Shielded	Length
1	Power cable	No	0.8m
2	RJ-45 cable	No	10m
3	RJ-45 cable*2	No	1.5m
4	RJ-45 cable	No	1.5m

3.4.2. Radiated Emissions Test Configuration

For overhead lines installations



For underground lines installations



4. General Information of Test

4.1. Test Facility

Test Site Location : No.8, Lane 724, Bo-ai St., Jhubei City,
Hsinchu County 302, Taiwan, R.O.C.

TEL : 886-3-656-9065

FAX : 886-3-656-9085

Test Site No. : Conduction: CO01-CB

Buildings With Overhead Lines: Test site No. 1

Buildings with Underground Lines: Test site No. 2

Buildings With Overhead Lines: Test site No. 3

4.2. Test Voltage

Power Type	Test Voltage
AC Power Supply	120 V / 60 Hz

4.3. Standard for Methods of Measurement

ANSI C63.4-2014

4.4. Frequency Range Investigated

Test Items	Frequency Range
Conducted emission test	0.535 MHz to 1.705 MHz
Radiated emission test	9 kHz to 1,000 MHz

5. Test of Conducted Emission

5.1. Limit

For a Low-power Radio-frequency Device which is designed to be connected to the AC power line, the radio frequency voltage that is conducted back onto the AC power line on any frequency or frequencies within the band 150 kHz to 30 MHz shall not exceed below limits table.

Frequency (MHz)	QP Limit (dBuV)	AV Limit (dBuV)
0.15~0.5	66~56	56~46
0.5~5	56	46
5~30	60	50

The limits shown above shall not apply to carrier current systems operating as unintentional radiators on frequencies below 30 MHz. In lieu thereof, these carriercurrent systems shall be subject to the following standards:

- (1) For carrier current systems containing their fundamental emission within the frequency band 535-1705 kHz and intended to be received using a AM broadcast receiver: no limit on conducted emissions.
- (2) For all other carrier current systems: 1000 uV within the frequency band 535-1705 kHz, as measured using a 50 µH/50 ohms LISN

Frequency (MHz)	Limit (uV)	Limit (dBuV)
0.535 ~ 1.705	1000	60

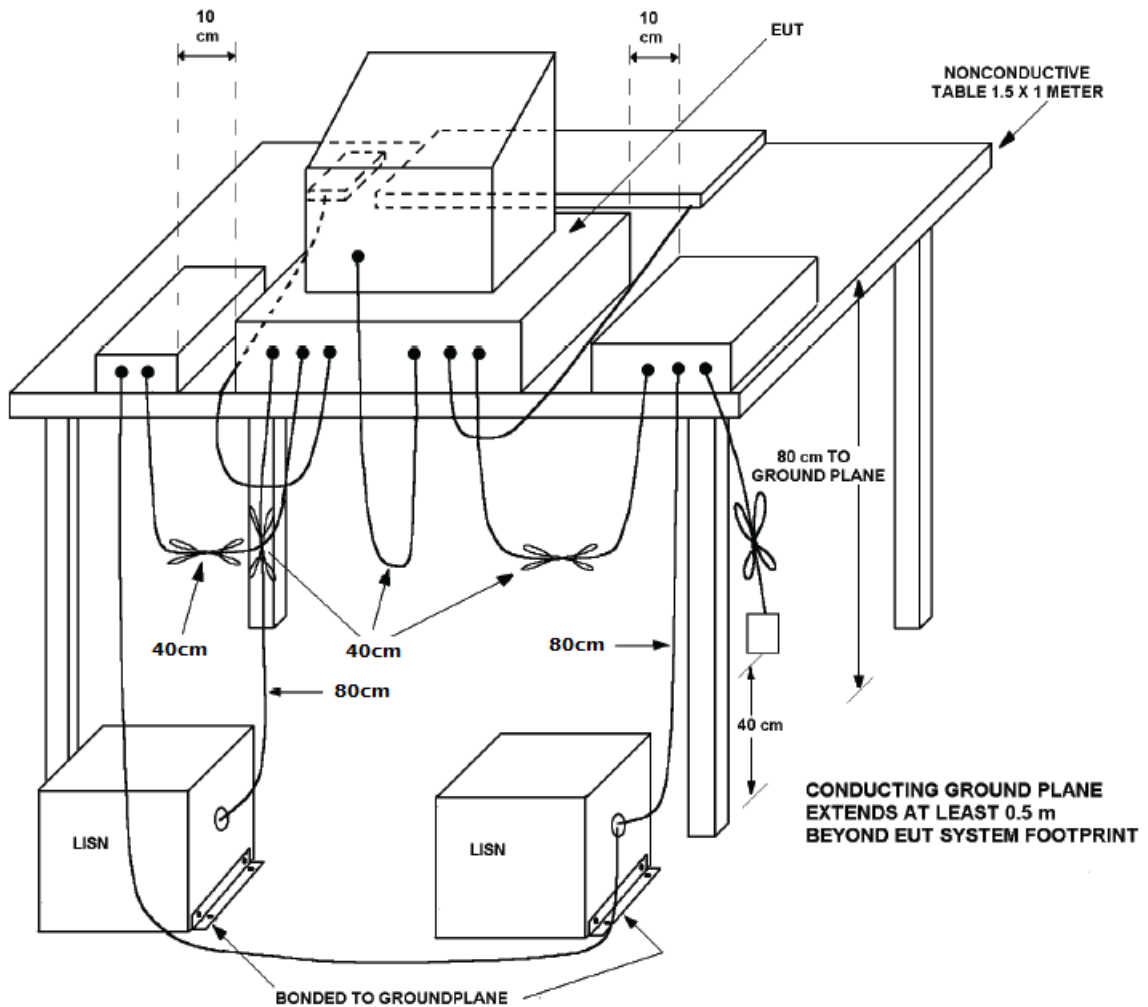
5.2. Description of Major Test Instruments

Receiver Parameters	Setting
Start Frequency	0.535 MHz
Stop Frequency	1.705 MHz
RBW	200 Hz for 9 kHz ~ 150 kHz / 9 kHz for 150 kHz ~ 30 MHz

5.3. Test Procedures

- a. The EUT was placed 0.4 meter from the conducting wall of the shielding room was kept at least 80 centimeters from any other grounded conducting surface.
- b. Connect EUT to the power mains through a line impedance stabilization network (LISN).
- c. All the support units are connect to the other LISN.
- d. The LISN provides 50 Ω coupling impedance for the measuring instrument.
- e. The FCC states that a 50 Ω , 50 μ H LISN should be used.
- f. Both sides of AC line were checked for maximum conducted interference.
- g. The frequency range from 0.535 MHz to 1.705 MHz was searched.
- h. Set the test-receiver system to Peak Detect Function and Specified Bandwidth with Maximum Hold Mode.

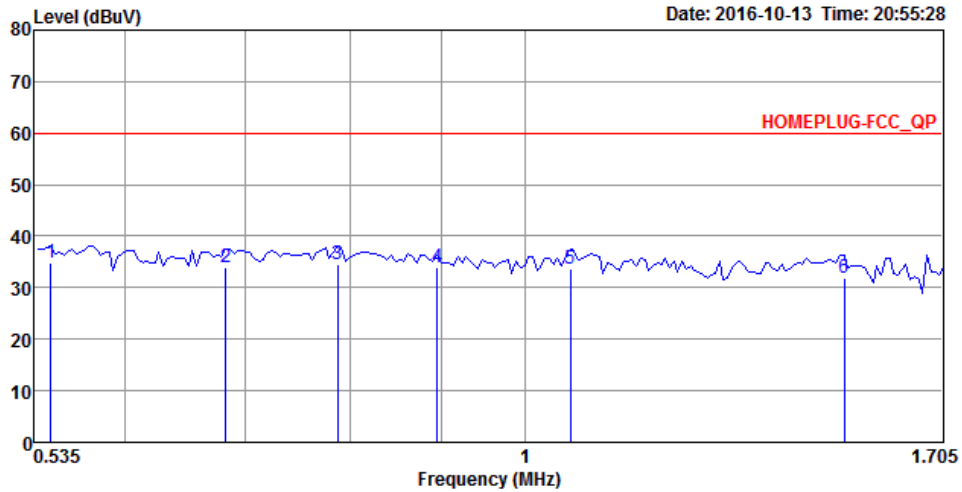
5.4. Typical Test Setup Layout of Conducted Emission



5.5. Test Result of AC Power Ports

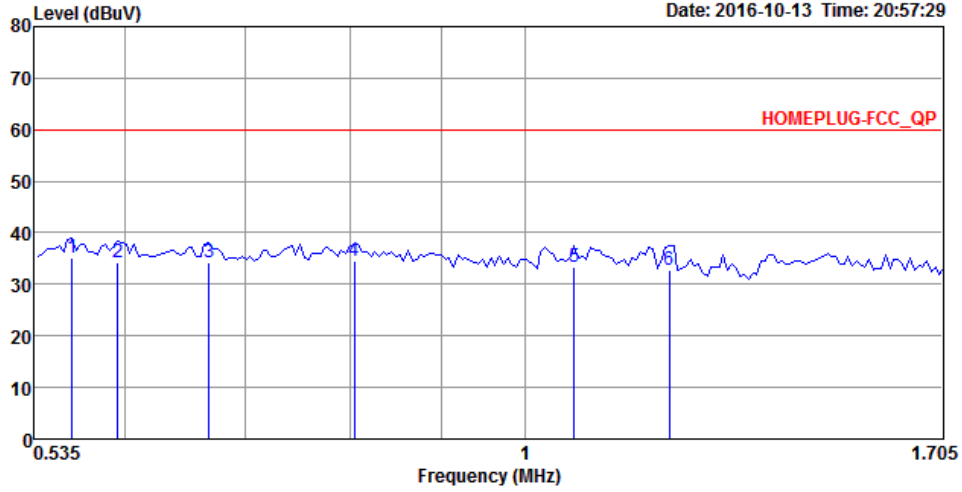
Temperature	23°C	Humidity	60%
Test Engineer	Deven Huang	Frequency Range	0.535 MHz to 1.705 MHz
Test Mode	Mode 1		

Line



	Freq	Level	Over Limit	Limit Line	Read Level	LISN Factor	Cable Loss	Pol/Phase	Remark
	MHz	dBuV	dB	dBuV	dBuV	dB	dB		
1	0.5464	34.95	-25.05	60.00	24.76	9.93	0.26	LINE	QP
2	0.6826	33.84	-26.16	60.00	23.47	9.93	0.44	LINE	QP
3	0.7876	34.51	-25.49	60.00	24.03	9.93	0.55	LINE	QP
4	0.8944	34.00	-26.00	60.00	23.41	9.94	0.65	LINE	QP
5	1.0597	33.52	-26.48	60.00	22.90	9.94	0.68	LINE	QP
6	1.5033	31.96	-28.04	60.00	21.67	9.95	0.34	LINE	QP

Neutral



	Freq	Level	Over Limit	Limit Line	Read Level	LISN Factor	Cable Loss	Pol/Phase	Remark
	MHz	dBuV	dB	dBuV	dBuV	dB	dB		
1	0.5611	35.10	-24.90	60.00	24.90	9.93	0.27	NEUTRAL	QP
2	0.5948	34.32	-25.68	60.00	24.06	9.93	0.33	NEUTRAL	QP
3	0.6683	34.13	-25.87	60.00	23.78	9.93	0.42	NEUTRAL	QP
4	0.8045	34.47	-25.53	60.00	23.97	9.93	0.57	NEUTRAL	QP
5	1.0653	33.51	-26.49	60.00	22.89	9.94	0.68	NEUTRAL	QP
6	1.2034	32.78	-27.22	60.00	22.28	9.94	0.56	NEUTRAL	QP

6. Test of Radiated Emission

6.1. Limit

Frequencies (MHz)	Field Strength (micorvolts/meter)	Measurement Distance (meters)
0.009~0.490	2400/F(kHz)	300
0.490~1.705	24000/F(kHz)	30
1.705~30.0	30	30
30~88	100	3
88~216	150	3
216~960	200	3
Above 960	500	3

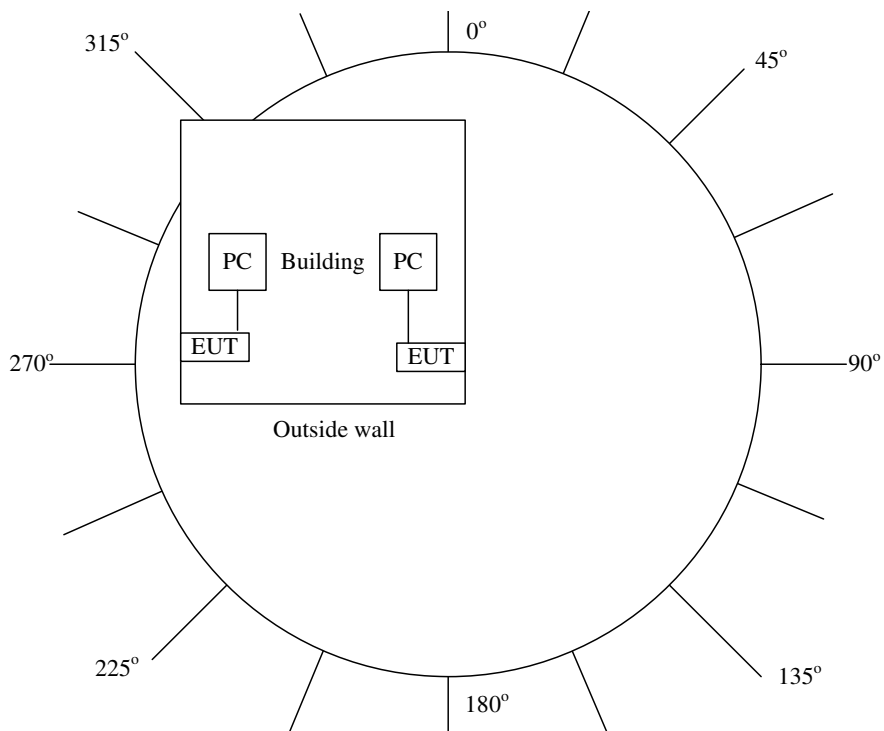
6.2. Description of Major Test Instruments

Receiver Parameter	Setting
Center Frequency	Fundamental Frequency
RBW	200 Hz for 9 kHz ~150 kHz / 9 kHz for 150 kHz ~ 30MHz 120 kHz for 30 MHz to 1,000 MHz
Detector	Quasi-Peak

6.3. Test Procedures

- a. Configure the EUT to normal operation mode. EUT installed in a building on an outside wall on the ground floor or first floor. Testing shall be performed on three typical installations.
- b. Power on the EUT and all the supporting units.
- c. Measurements shall be made at positions around the building perimeter where the maximum emissions occur. ANSI C63.4-2014, specifies a minimum of 16 radial angles surrounding the EUT (building perimeter).
- d. For frequencies below 30 MHz, an active or passive magnetic loop is used. The magnetic loop antenna should be at 1 meter height and the emission maximized over 180 degrees. When using active magnetic loops, care should be taken to prevent ambient signals from overloading the spectrum analyzer.
- e. For frequencies above 30 MHz, a bicon antenna is used. The signal shall be maximized from 1 to 4 meter antenna height for both horizontal and vertical polarizations in accordance to ANSI C63.4-2014 procedures.

6.4. Typical Test Setup Layout of Radiated Emission



6.5. Test Result of Radiated Emission

Temperature	30°C	Humidity	63%
Test Engineer	Edison Lin	Test Mode	Mode 1
Test Date	Jul. 22, 2016	Configuration	Building 1

Measured at 0° position (Building 1)

Freq. (MHz)	Level (dBuV/m)	Over Limit (dB)	Limit Line (dBuV/m) at 3m	Polarization
8.69	27.97	-41.57	69.54	-
13.18	26.43	-43.11	69.54	-
25.69	30.89	-38.65	69.54	-
50.66	26.77	-13.23	40.00	Vertical
164.4	28.27	-15.23	43.50	Horizontal
181.09	28.74	-14.76	43.50	Horizontal
511.34	26.23	-19.77	46.00	-
930.76	29.34	-16.66	46.00	-
990.7	27.8	-26.20	54.00	-

Measured at 22.5° position (Building 1)

Freq. (MHz)	Level (dBuV/m)	Over Limit (dB)	Limit Line (dBuV/m) at 3m	Polarization
8.69	31.99	-37.55	69.54	-
13.18	31.48	-38.06	69.54	-
25.69	28.27	-41.27	69.54	-
50.66	27.66	-12.34	40.00	Vertical
164.4	30.22	-13.28	43.50	Vertical
181.09	27.94	-15.56	43.50	-
511.34	30.94	-15.06	46.00	Horizontal
930.76	26.78	-19.22	46.00	-
990.7	30.92	-23.08	54.00	-

Measured at 45° position (Building 1)

Freq. (MHz)	Level (dBuV/m)	Over Limit (dB)	Limit Line (dBuV/m) at 3m	Polarization
8.69	29.07	-40.47	69.54	-
13.18	26.11	-43.43	69.54	-
25.69	29.48	-40.06	69.54	-
50.66	31.79	-8.21	40.00	Vertical
164.4	27.16	-16.34	43.50	Horizontal
181.09	26.84	-16.66	43.50	-
511.34	28.37	-17.63	46.00	-
930.76	29.71	-16.29	46.00	Vertical
990.7	31.8	-22.20	54.00	-

Measured at 67.5° position (Building 1)

Freq. (MHz)	Level (dBuV/m)	Over Limit (dB)	Limit Line (dBuV/m) at 3m	Polarization
8.69	28.16	-41.38	69.54	-
13.18	29.15	-40.39	69.54	-
25.69	28.17	-41.37	69.54	-
50.66	29.88	-10.12	40.00	Vertical
164.4	31.06	-12.44	43.50	Horizontal
181.09	31.92	-11.58	43.50	Horizontal
511.34	31.77	-14.23	46.00	-
930.76	27.19	-18.81	46.00	-
990.7	31.12	-22.88	54.00	-

Measured at 90° position (Building 1)

Freq. (MHz)	Level (dBuV/m)	Over Limit (dB)	Limit Line (dBuV/m) at 3m	Polarization
8.69	27.64	-41.90	69.54	-
13.18	31.31	-38.23	69.54	-
25.69	27.05	-42.49	69.54	-
50.66	28.45	-11.55	40.00	Horizontal
164.4	28.96	-14.54	43.50	Horizontal
181.09	28.37	-15.13	43.50	Vertical
511.34	30.47	-15.53	46.00	-
930.76	30.8	-15.20	46.00	-
990.7	28.33	-25.67	54.00	-

Measured at 112.5° position (Building 1)

Freq. (MHz)	Level (dBuV/m)	Over Limit (dB)	Limit Line (dBuV/m) at 3m	Polarization
8.69	30.69	-38.85	69.54	-
13.18	29.82	-39.72	69.54	-
25.69	30.99	-38.55	69.54	-
50.66	26.46	-13.54	40.00	Horizontal
164.4	28.22	-15.28	43.50	Vertical
181.09	27.91	-15.59	43.50	Horizontal
511.34	28.70	-17.30	46.00	-
930.76	26.32	-19.68	46.00	-
990.7	27.1	-26.90	54.00	-

Measured at 135° position (Building 1)

Freq. (MHz)	Level (dBuV/m)	Over Limit (dB)	Limit Line (dBuV/m) at 3m	Polarization
8.69	26.83	-42.71	69.54	-
13.18	26.00	-43.54	69.54	-
25.69	28.06	-41.48	69.54	-
50.66	29.74	-10.26	40.00	Vertical
164.4	31.41	-12.09	43.50	Horizontal
181.09	29.85	-13.65	43.50	Horizontal
511.34	26.96	-19.04	46.00	-
930.76	28.25	-17.75	46.00	-
990.7	26.82	-27.18	54.00	-

Measured at 157.5° position (Building 1)

Freq. (MHz)	Level (dBuV/m)	Over Limit (dB)	Limit Line (dBuV/m) at 3m	Polarization
8.69	26.42	-43.12	69.54	-
13.18	27.34	-42.20	69.54	-
25.69	29.29	-40.25	69.54	-
50.66	29.79	-10.21	40.00	Vertical
164.4	28.34	-15.16	43.50	Horizontal
181.09	27.68	-15.82	43.50	-
511.34	26.61	-19.39	46.00	-
930.76	31.17	-14.83	46.00	Horizontal
990.7	26.83	-27.17	54.00	-

Measured at 180° position (Building 1)

Freq. (MHz)	Level (dBuV/m)	Over Limit (dB)	Limit Line (dBuV/m) at 3m	Polarization
8.69	31.08	-38.46	69.54	-
13.18	29.45	-40.09	69.54	-
25.69	30.00	-39.54	69.54	-
50.66	27.55	-12.45	40.00	Horizontal
164.4	28.80	-14.70	43.50	Vertical
181.09	28.18	-15.32	43.50	-
511.34	31.47	-14.53	46.00	Vertical
930.76	28.71	-17.29	46.00	-
990.7	28.57	-25.43	54.00	-

Measured at 202.5° position (Building 1)

Freq. (MHz)	Level (dBuV/m)	Over Limit (dB)	Limit Line (dBuV/m) at 3m	Polarization
8.69	29.22	-40.32	69.54	-
13.18	26.42	-43.12	69.54	-
25.69	30.40	-39.14	69.54	-
50.66	26.72	-13.28	40.00	Vertical
164.4	30.35	-13.15	43.50	Vertical
181.09	26.77	-16.73	43.50	-
511.34	29.06	-16.94	46.00	-
930.76	30.96	-15.04	46.00	Horizontal
990.7	29.15	-24.85	54.00	-

Measured at 225° position (Building 1)

Freq. (MHz)	Level (dBuV/m)	Over Limit (dB)	Limit Line (dBuV/m) at 3m	Polarization
8.69	30.06	-39.48	69.54	-
13.18	29.60	-39.94	69.54	-
25.69	31.27	-38.27	69.54	-
50.66	30.16	-9.84	40.00	Horizontal
164.4	29.93	-13.57	43.50	Vertical
181.09	27.57	-15.93	43.50	-
511.34	27.96	-18.04	46.00	-
930.76	31.41	-14.59	46.00	Vertical
990.7	27.63	-26.37	54.00	-

Measured at 247.5° position (Building 1)

Freq. (MHz)	Level (dBuV/m)	Over Limit (dB)	Limit Line (dBuV/m) at 3m	Polarization
8.69	27.92	-41.62	69.54	-
13.18	28.85	-40.69	69.54	-
25.69	26.52	-43.02	69.54	-
50.66	30.94	-9.06	40.00	Horizontal
164.4	30.43	-13.07	43.50	Horizontal
181.09	30.05	-13.45	43.50	Vertical
511.34	28.78	-17.22	46.00	-
930.76	30.02	-15.98	46.00	-
990.7	29.63	-24.37	54.00	-

Measured at 270° position (Building 1)

Freq. (MHz)	Level (dBuV/m)	Over Limit (dB)	Limit Line (dBuV/m) at 3m	Polarization
8.69	29.75	-39.79	69.54	-
13.18	28.49	-41.05	69.54	-
25.69	26.09	-43.45	69.54	-
50.66	28.53	-11.47	40.00	Horizontal
164.4	28.26	-15.24	43.50	Vertical
181.09	27.13	-16.37	43.50	Vertical
511.34	29.29	-16.71	46.00	-
930.76	26.53	-19.47	46.00	-
990.7	28.12	-25.88	54.00	-

Measured at 292.5° position (Building 1)

Freq. (MHz)	Level (dBuV/m)	Over Limit (dB)	Limit Line (dBuV/m) at 3m	Polarization
8.69	27.50	-42.04	69.54	-
13.18	29.29	-40.25	69.54	-
25.69	29.76	-39.78	69.54	-
50.66	29.45	-10.55	40.00	Horizontal
164.4	30.68	-12.82	43.50	Vertical
181.09	27.82	-15.68	43.50	Vertical
511.34	29.30	-16.70	46.00	-
930.76	26.28	-19.72	46.00	-
990.7	31.79	-22.21	54.00	-

Measured at 315° position (Building 1)

Freq. (MHz)	Level (dBuV/m)	Over Limit (dB)	Limit Line (dBuV/m) at 3m	Polarization
8.69	29.27	-40.27	69.54	-
13.18	31.25	-38.29	69.54	-
25.69	31.49	-38.05	69.54	-
50.66	26.21	-13.79	40.00	Horizontal
164.4	27.06	-16.44	43.50	-
181.09	30.58	-12.92	43.50	Horizontal
511.34	26.31	-19.69	46.00	-
930.76	31.47	-14.53	46.00	Horizontal
990.7	30.61	-23.39	54.00	-

Measured at 337.5° position (Building 1)

Freq. (MHz)	Level (dBuV/m)	Over Limit (dB)	Limit Line (dBuV/m) at 3m	Polarization
8.69	27.58	-41.96	69.54	-
13.18	28.62	-40.92	69.54	-
25.69	27.33	-42.21	69.54	-
50.66	26.70	-13.30	40.00	Horizontal
164.4	31.88	-11.62	43.50	Horizontal
181.09	26.93	-16.57	43.50	-
511.34	30.04	-15.96	46.00	Vertical
930.76	28.76	-17.24	46.00	-
990.7	27.77	-26.23	54.00	-

Note1:

Emission level (dBuV/m) = 20 log Emission level (uV/m).

Distance extrapolation factor below 30MHz = 40 log (specific distance / test distance) (dB);

Limit line = specific limits (dBuV) + distance extrapolation factor.

The other emission levels were very low against the limit so it didn't record in the test report.

Note2:

The tables recorded the polarization for three worst cases.

Temperature	31°C	Humidity	61%
Test Engineer	Edison Lin	Test Mode	Mode 1
Test Date	Jul. 23, 2016	Configuration	Building 2

Measured at 0° position (Building 2)

Freq. (MHz)	Level (dBuV/m)	Over Limit (dB)	Limit Line (dBuV/m) at 3m	Polarization
6.99	31.73	-37.81	69.54	-
14.29	26.16	-43.38	69.54	-
21.53	31.58	-37.96	69.54	-
80.56	28.74	-11.26	40.00	Vertical
92.46	26.72	-16.78	43.50	-
108.12	27.31	-16.19	43.50	Horizontal
621.7	31.04	-14.96	46.00	Horizontal
763.59	26.68	-19.32	46.00	-
902.28	28.4	-17.60	46.00	-

Measured at 22.5° position (Building 2)

Freq. (MHz)	Level (dBuV/m)	Over Limit (dB)	Limit Line (dBuV/m) at 3m	Polarization
6.99	27.88	-41.66	69.54	-
14.29	29.45	-40.09	69.54	-
21.53	29.84	-39.70	69.54	-
80.56	29.12	-10.88	40.00	Horizontal
92.46	28.49	-15.01	43.50	Vertical
108.12	27.03	-16.47	43.50	Vertical
621.7	28.05	-17.95	46.00	-
763.59	28.31	-17.69	46.00	-
902.28	28.08	-17.92	46.00	-

Measured at 45° position (Building 2)

Freq. (MHz)	Level (dBuV/m)	Over Limit (dB)	Limit Line (dBuV/m) at 3m	Polarization
6.99	30.17	-39.37	69.54	-
14.29	26.71	-42.83	69.54	-
21.53	29.74	-39.80	69.54	-
80.56	29.87	-10.13	40.00	Horizontal
92.46	31.17	-12.33	43.50	Vertical
108.12	29.76	-13.74	43.50	Vertical
621.7	31.69	-14.31	46.00	-
763.59	31.95	-14.05	46.00	-
902.28	29.41	-16.59	46.00	-

Measured at 67.5° position (Building 2)

Freq. (MHz)	Level (dBuV/m)	Over Limit (dB)	Limit Line (dBuV/m) at 3m	Polarization
6.99	30.90	-38.64	69.54	-
14.29	28.74	-40.80	69.54	-
21.53	27.89	-41.65	69.54	-
80.56	29.56	-10.44	40.00	Horizontal
92.46	26.46	-17.04	43.50	-
108.12	29.93	-13.57	43.50	Vertical
621.7	31.20	-14.80	46.00	Horizontal
763.59	28.46	-17.54	46.00	-
902.28	26.2	-19.80	46.00	-

Measured at 90° position (Building 2)

Freq. (MHz)	Level (dBuV/m)	Over Limit (dB)	Limit Line (dBuV/m) at 3m	Polarization
6.99	27.34	-42.20	69.54	-
14.29	28.59	-40.95	69.54	-
21.53	31.21	-38.33	69.54	-
80.56	28.87	-11.13	40.00	Horizontal
92.46	29.91	-13.59	43.50	Vertical
108.12	31.20	-12.30	43.50	Vertical
621.7	27.08	-18.92	46.00	-
763.59	28.48	-17.52	46.00	-
902.28	30.76	-15.24	46.00	-

Measured at 112.5° position (Building 2)

Freq. (MHz)	Level (dBuV/m)	Over Limit (dB)	Limit Line (dBuV/m) at 3m	Polarization
6.99	28.91	-40.63	69.54	-
14.29	28.24	-41.30	69.54	-
21.53	27.09	-42.45	69.54	-
80.56	26.24	-13.76	40.00	Horizontal
92.46	26.86	-16.64	43.50	-
108.12	28.46	-15.04	43.50	Vertical
621.7	29.99	-16.01	46.00	-
763.59	27.29	-18.71	46.00	-
902.28	31.38	-14.62	46.00	Vertical

Measured at 135° position (Building 2)

Freq. (MHz)	Level (dBuV/m)	Over Limit (dB)	Limit Line (dBuV/m) at 3m	Polarization
6.99	28.18	-41.36	69.54	-
14.29	31.76	-37.78	69.54	-
21.53	27.52	-42.02	69.54	-
80.56	31.93	-8.07	40.00	Vertical
92.46	31.17	-12.33	43.50	Vertical
108.12	29.14	-14.36	43.50	Horizontal
621.7	29.37	-16.63	46.00	-
763.59	26.79	-19.21	46.00	-
902.28	28.46	-17.54	46.00	-

Measured at 157.5° position (Building 2)

Freq. (MHz)	Level (dBuV/m)	Over Limit (dB)	Limit Line (dBuV/m) at 3m	Polarization
6.99	31.39	-38.15	69.54	-
14.29	28.56	-40.98	69.54	-
21.53	30.18	-39.36	69.54	-
80.56	31.30	-8.70	40.00	Horizontal
92.46	26.40	-17.10	43.50	-
108.12	29.56	-13.94	43.50	Horizontal
621.7	28.82	-17.18	46.00	-
763.59	29.97	-16.03	46.00	-
902.28	31.95	-14.05	46.00	Vertical

Measured at 180° position (Building 2)

Freq. (MHz)	Level (dBuV/m)	Over Limit (dB)	Limit Line (dBuV/m) at 3m	Polarization
6.99	30.66	-38.88	69.54	-
14.29	28.73	-40.81	69.54	-
21.53	30.81	-38.73	69.54	-
80.56	29.46	-10.54	40.00	Vertical
92.46	26.34	-17.16	43.50	-
108.12	30.34	-13.16	43.50	Horizontal
621.7	28.85	-17.15	46.00	-
763.59	31.89	-14.11	46.00	Horizontal
902.28	29.71	-16.29	46.00	-

Measured at 202.5° position (Building 2)

Freq. (MHz)	Level (dBuV/m)	Over Limit (dB)	Limit Line (dBuV/m) at 3m	Polarization
6.99	27.23	-42.31	69.54	-
14.29	27.70	-41.84	69.54	-
21.53	28.59	-40.95	69.54	-
80.56	26.37	-13.63	40.00	Vertical
92.46	30.44	-13.06	43.50	Horizontal
108.12	26.83	-16.67	43.50	-
621.7	27.02	-18.98	46.00	-
763.59	29.3	-16.70	46.00	-
902.28	31.54	-14.46	46.00	Horizontal

Measured at 225° position (Building 2)

Freq. (MHz)	Level (dBuV/m)	Over Limit (dB)	Limit Line (dBuV/m) at 3m	Polarization
6.99	30.30	-39.24	69.54	-
14.29	31.79	-37.75	69.54	-
21.53	28.73	-40.81	69.54	-
80.56	27.74	-12.26	40.00	Vertical
92.46	30.91	-12.59	43.50	Vertical
108.12	29.18	-14.32	43.50	-
621.7	30.51	-15.49	46.00	-
763.59	31.83	-14.17	46.00	Vertical
902.28	26.18	-19.82	46.00	-

Measured at 247.5° position (Building 2)

Freq. (MHz)	Level (dBuV/m)	Over Limit (dB)	Limit Line (dBuV/m) at 3m	Polarization
6.99	28.14	-41.40	69.54	-
14.29	27.14	-42.40	69.54	-
21.53	31.58	-37.96	69.54	-
80.56	31.60	-8.40	40.00	Horizontal
92.46	28.45	-15.05	43.50	Horizontal
108.12	30.59	-12.91	43.50	Vertical
621.7	26.76	-19.24	46.00	-
763.59	30.14	-15.86	46.00	-
902.28	28.29	-17.71	46.00	-

Measured at 270° position (Building 2)

Freq. (MHz)	Level (dBuV/m)	Over Limit (dB)	Limit Line (dBuV/m) at 3m	Polarization
6.99	30.28	-39.26	69.54	-
14.29	31.29	-38.25	69.54	-
21.53	29.16	-40.38	69.54	-
80.56	28.37	-11.63	40.00	Vertical
92.46	26.14	-17.36	43.50	-
108.12	28.13	-15.37	43.50	-
621.7	30.72	-15.28	46.00	Vertical
763.59	31.9	-14.10	46.00	Horizontal
902.28	29.64	-16.36	46.00	-

Measured at 292.5° position (Building 2)

Freq. (MHz)	Level (dBuV/m)	Over Limit (dB)	Limit Line (dBuV/m) at 3m	Polarization
6.99	31.47	-38.07	69.54	-
14.29	29.89	-39.65	69.54	-
21.53	27.16	-42.38	69.54	-
80.56	27.39	-12.61	40.00	Vertical
92.46	31.68	-11.82	43.50	Vertical
108.12	29.82	-13.68	43.50	Horizontal
621.7	29.04	-16.96	46.00	-
763.59	26.46	-19.54	46.00	-
902.28	30.44	-15.56	46.00	-

Measured at 315° position (Building 2)

Freq. (MHz)	Level (dBuV/m)	Over Limit (dB)	Limit Line (dBuV/m) at 3m	Polarization
6.99	30.33	-39.21	69.54	-
14.29	29.06	-40.48	69.54	-
21.53	30.39	-39.15	69.54	-
80.56	28.34	-11.66	40.00	Vertical
92.46	29.54	-13.96	43.50	Horizontal
108.12	28.07	-15.43	43.50	Horizontal
621.7	29.55	-16.45	46.00	-
763.59	28.58	-17.42	46.00	-
902.28	28.93	-17.07	46.00	-

Measured at 337.5° position (Building 2)

Freq. (MHz)	Level (dBuV/m)	Over Limit (dB)	Limit Line (dBuV/m) at 3m	Polarization
6.99	31.49	-38.05	69.54	-
14.29	31.33	-38.21	69.54	-
21.53	27.45	-42.09	69.54	-
80.56	28.41	-11.59	40.00	Horizontal
92.46	30.76	-12.74	43.50	Vertical
108.12	31.62	-11.88	43.50	Horizontal
621.7	26.36	-19.64	46.00	-
763.59	28.01	-17.99	46.00	-
902.28	29.34	-16.66	46.00	-

Note1:

Emission level (dBuV/m) = 20 log Emission level (uV/m).

Distance extrapolation factor below 30MHz = 40 log (specific distance / test distance) (dB);

Limit line = specific limits (dBuV) + distance extrapolation factor.

The other emission levels were very low against the limit so it didn't record in the test report.

Note2:

The tables recorded the polarization for three worst cases.

Temperature	29°C	Humidity	60%
Test Engineer	Edison Lin	Test Mode	Mode 1
Test Date	Jul. 24, 2016	Configuration	Building 3

Measured at 0° position (Building 3)

Freq. (MHz)	Level (dBuV/m)	Over Limit (dB)	Limit Line (dBuV/m) at 3m	Polarization
12.01	31.75	-37.79	69.54	-
17.64	26.65	-42.89	69.54	-
21.93	27.04	-42.50	69.54	-
119.96	28.01	-15.49	43.50	Horizontal
260.87	32.00	-14.00	46.00	Vertical
414.63	31.57	-14.43	46.00	Vertical
498.94	28.18	-17.82	46.00	-
612.14	26.88	-19.12	46.00	-
973.98	31.1	-22.90	54.00	-

Measured at 22.5° position (Building 3)

Freq. (MHz)	Level (dBuV/m)	Over Limit (dB)	Limit Line (dBuV/m) at 3m	Polarization
12.01	28.09	-41.45	69.54	-
17.64	27.87	-41.67	69.54	-
21.93	27.56	-41.98	69.54	-
119.96	31.62	-11.88	43.50	Vertical
260.87	28.39	-17.61	46.00	-
414.63	29.86	-16.14	46.00	Horizontal
498.94	27.38	-18.62	46.00	-
612.14	31.46	-14.54	46.00	Horizontal
973.98	27.5	-26.50	54.00	-

Measured at 45° position (Building 3)

Freq. (MHz)	Level (dBuV/m)	Over Limit (dB)	Limit Line (dBuV/m) at 3m	Polarization
12.01	31.84	-37.70	69.54	-
17.64	28.86	-40.68	69.54	-
21.93	27.95	-41.59	69.54	-
119.96	28.68	-14.82	43.50	Horizontal
260.87	30.97	-15.03	46.00	Vertical
414.63	29.79	-16.21	46.00	-
498.94	28.00	-18.00	46.00	-
612.14	31.01	-14.99	46.00	Vertical
973.98	29.6	-24.40	54.00	-

Measured at 67.5° position (Building 3)

Freq. (MHz)	Level (dBuV/m)	Over Limit (dB)	Limit Line (dBuV/m) at 3m	Polarization
12.01	30.63	-38.91	69.54	-
17.64	27.11	-42.43	69.54	-
21.93	26.93	-42.61	69.54	-
119.96	28.60	-14.90	43.50	Horizontal
260.87	29.58	-16.42	46.00	-
414.63	30.06	-15.94	46.00	-
498.94	30.72	-15.28	46.00	Vertical
612.14	30.48	-15.52	46.00	Horizontal
973.98	30.22	-23.78	54.00	-

Measured at 90° position (Building 3)

Freq. (MHz)	Level (dBuV/m)	Over Limit (dB)	Limit Line (dBuV/m) at 3m	Polarization
12.01	30.04	-39.50	69.54	-
17.64	28.20	-41.34	69.54	-
21.93	26.57	-42.97	69.54	-
119.96	26.14	-17.36	43.50	Horizontal
260.87	30.92	-15.08	46.00	Horizontal
414.63	30.78	-15.22	46.00	Horizontal
498.94	26.10	-19.90	46.00	-
612.14	28.59	-17.41	46.00	-
973.98	26.02	-27.98	54.00	-

Measured at 112.5° position (Building 3)

Freq. (MHz)	Level (dBuV/m)	Over Limit (dB)	Limit Line (dBuV/m) at 3m	Polarization
12.01	29.77	-39.77	69.54	-
17.64	29.99	-39.55	69.54	-
21.93	31.76	-37.78	69.54	-
119.96	30.85	-12.65	43.50	Horizontal
260.87	31.83	-14.17	46.00	Vertical
414.63	27.87	-18.13	46.00	-
498.94	28.46	-17.54	46.00	Vertical
612.14	27.16	-18.84	46.00	-
973.98	29.36	-24.64	54.00	-

Measured at 135° position (Building 3)

Freq. (MHz)	Level (dBuV/m)	Over Limit (dB)	Limit Line (dBuV/m) at 3m	Polarization
12.01	29.97	-39.57	69.54	-
17.64	28.73	-40.81	69.54	-
21.93	31.28	-38.26	69.54	-
119.96	30.25	-13.25	43.50	Vertical
260.87	27.81	-18.19	46.00	-
414.63	30.42	-15.58	46.00	-
498.94	31.55	-14.45	46.00	Horizontal
612.14	30.46	-15.54	46.00	Horizontal
973.98	26.91	-27.09	54.00	-

Measured at 157.5° position (Building 3)

Freq. (MHz)	Level (dBuV/m)	Over Limit (dB)	Limit Line (dBuV/m) at 3m	Polarization
12.01	30.38	-39.16	69.54	-
17.64	31.12	-38.42	69.54	-
21.93	28.26	-41.28	69.54	-
119.96	26.07	-17.43	43.50	Horizontal
260.87	30.21	-15.79	46.00	Horizontal
414.63	27.53	-18.47	46.00	-
498.94	31.79	-14.21	46.00	Vertical
612.14	27.41	-18.59	46.00	-
973.98	27.25	-26.75	54.00	-

Measured at 180° position (Building 3)

Freq. (MHz)	Level (dBuV/m)	Over Limit (dB)	Limit Line (dBuV/m) at 3m	Polarization
12.01	31.50	-38.04	69.54	-
17.64	28.13	-41.41	69.54	-
21.93	27.30	-42.24	69.54	-
119.96	27.66	-15.84	43.50	Horizontal
260.87	29.65	-16.35	46.00	-
414.63	30.17	-15.83	46.00	Horizontal
498.94	29.37	-16.63	46.00	-
612.14	31.41	-14.59	46.00	Vertical
973.98	27.18	-26.82	54.00	-

Measured at 202.5° position (Building 3)

Freq. (MHz)	Level (dBuV/m)	Over Limit (dB)	Limit Line (dBuV/m) at 3m	Polarization
12.01	31.79	-37.75	69.54	-
17.64	27.61	-41.93	69.54	-
21.93	31.57	-37.97	69.54	-
119.96	31.35	-12.15	43.50	Vertical
260.87	27.40	-18.60	46.00	-
414.63	30.66	-15.34	46.00	Horizontal
498.94	30.35	-15.65	46.00	Horizontal
612.14	27.71	-18.29	46.00	-
973.98	27.72	-26.28	54.00	-

Measured at 225° position (Building 3)

Freq. (MHz)	Level (dBuV/m)	Over Limit (dB)	Limit Line (dBuV/m) at 3m	Polarization
12.01	26.91	-42.63	69.54	-
17.64	27.59	-41.95	69.54	-
21.93	31.63	-37.91	69.54	-
119.96	28.92	-14.58	43.50	Vertical
260.87	31.08	-14.92	46.00	Horizontal
414.63	30.18	-15.82	46.00	Horizontal
498.94	29.50	-16.50	46.00	-
612.14	26.29	-19.71	46.00	-
973.98	30.53	-23.47	54.00	-

Measured at 247.5° position (Building 3)

Freq. (MHz)	Level (dBuV/m)	Over Limit (dB)	Limit Line (dBuV/m) at 3m	Polarization
12.01	29.85	-39.69	69.54	-
17.64	29.49	-40.05	69.54	-
21.93	28.70	-40.84	69.54	-
119.96	31.01	-12.49	43.50	Vertical
260.87	28.77	-17.23	46.00	-
414.63	30.95	-15.05	46.00	Horizontal
498.94	30.89	-15.11	46.00	Horizontal
612.14	28.01	-17.99	46.00	-
973.98	31.6	-22.40	54.00	-

Measured at 270° position (Building 3)

Freq. (MHz)	Level (dBuV/m)	Over Limit (dB)	Limit Line (dBuV/m) at 3m	Polarization
12.01	28.30	-41.24	69.54	-
17.64	30.08	-39.46	69.54	-
21.93	31.10	-38.44	69.54	-
119.96	29.27	-14.23	43.50	Vertical
260.87	31.93	-14.07	46.00	-
414.63	26.62	-19.38	46.00	Horizontal
498.94	29.80	-16.20	46.00	Vertical
612.14	27.6	-18.40	46.00	-
973.98	30.61	-23.39	54.00	-

Measured at 292.5° position (Building 3)

Freq. (MHz)	Level (dBuV/m)	Over Limit (dB)	Limit Line (dBuV/m) at 3m	Polarization
12.01	31.50	-38.04	69.54	-
17.64	31.14	-38.40	69.54	-
21.93	30.08	-39.46	69.54	-
119.96	27.29	-16.21	43.50	Horizontal
260.87	29.43	-16.57	46.00	Vertical
414.63	30.60	-15.40	46.00	Vertical
498.94	28.10	-17.90	46.00	-
612.14	26.20	-19.80	46.00	-
973.98	27.84	-26.16	54.00	-

Measured at 315° position (Building 3)

Freq. (MHz)	Level (dBuV/m)	Over Limit (dB)	Limit Line (dBuV/m) at 3m	Polarization
12.01	28.09	-41.45	69.54	-
17.64	29.34	-40.20	69.54	-
21.93	26.55	-42.99	69.54	-
119.96	26.78	-16.72	43.50	Horizontal
260.87	32.00	-14.00	46.00	Vertical
414.63	27.82	-18.18	46.00	-
498.94	26.28	-19.72	46.00	-
612.14	30.53	-15.47	46.00	Vertical
973.98	29.66	-24.34	54.00	-

Measured at 337.5° position (Building 3)

Freq. (MHz)	Level (dBuV/m)	Over Limit (dB)	Limit Line (dBuV/m) at 3m	Polarization
12.01	29.36	-40.18	69.54	-
17.64	27.99	-41.55	69.54	-
21.93	30.08	-39.46	69.54	-
119.96	26.64	-16.86	43.50	-
260.87	29.96	-16.04	46.00	Vertical
414.63	29.35	-16.65	46.00	-
498.94	30.96	-15.04	46.00	Vertical
612.14	31.45	-14.55	46.00	Horizontal
973.98	27.77	-26.23	54.00	-

Note1:

Emission level (dBuV/m) = 20 log Emission level (uV/m).

Distance extrapolation factor below 30MHz = 40 log (specific distance / test distance) (dB);

Limit line = specific limits (dBuV) + distance extrapolation factor.

The other emission levels were very low against the limit so it didn't record in the test report.

Note2:

The tables recorded the polarization for three worst cases.

7. List of Measuring Equipment Used

Instrument	Manufacturer	Model No.	Serial No.	Characteristics	Calibration Date	Remark
EMI Receiver	Agilent	N9038A	My52260123	9kHz ~ 8.45GHz	Jan. 27, 2016	Conduction (CO01-CB)
LISN	F.C.C.	FCC-LISN-50-16-2	04083	150kHz ~ 100MHz	Dec. 08, 2015	Conduction (CO01-CB)
LISN	Schwarzbeck	NSLK 8127	8127647	9kHz ~ 30MHz	Dec. 23, 2015	Conduction (CO01-CB)
COND Cable	Woken	Cable	01	150kHz ~ 30MHz	May 24, 2016	Conduction (CO01-CB)
Software	Audix	E3	6.120210n	-	N.C.R.	Conduction (CO01-CB)
Pre-Amplifier	Agilent	8447D	2944A10783	9kHz ~ 1.3GHz	Mar. 24, 2016	Radiation (10CH01-CB)
Loop Antenna	Teseq	HLA 6120	24155	9kHz - 30 MHz	Mar. 16, 2016*	Radiation (10CH01-CB)
BILOG ANTENNA	TESEQ	CBL6112D	37880	20MHz ~ 2GHz	Sep. 03, 2015	Radiation (10CH01-CB)
EMI Test Receiver	Rohde&Schwarz	ESCI	100186	9kHz ~ 3GHz	Jul. 07, 2016	Radiation (10CH01-CB)
Spectrum Analyzer	Rohde&Schwarz	FSV30	101026	9kHz ~ 30GHz	Jan. 04, 2016	Radiation (10CH01-CB)

※ Calibration Interval of instruments listed above is one year.

※ * Calibration Interval of instruments listed above is two year.

※ NCR means Non-Calibration required.

8. Uncertainty of Test Site

Test Items	Uncertainty	Remark
Conducted Emissions	3.2 dB	Confidence levels of 95%

Appendix A. Test Photos

1. Photographs of Conducted Emissions Test Configuration

FRONT VIEW



REAR VIEW



2. Photographs of Radiated Emissions Test Configuration

Building 1



Building 2



Building 3

