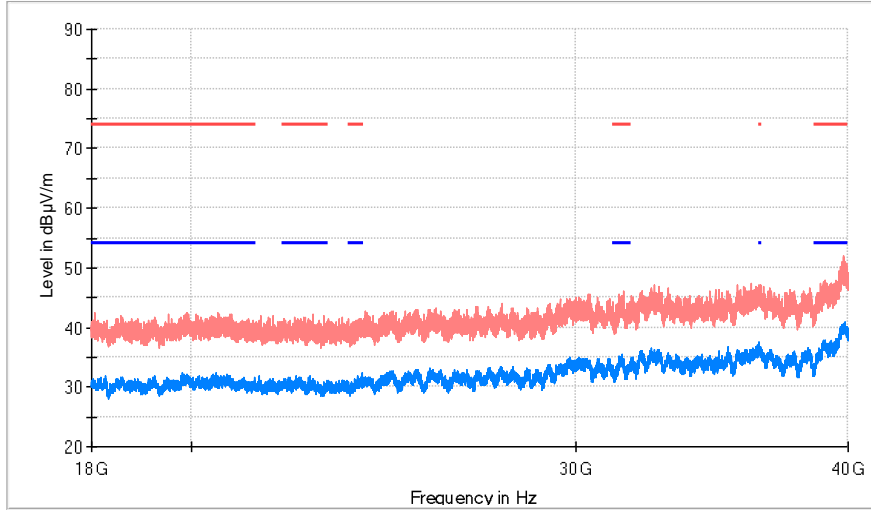


TEST RESULTS (Cont.)

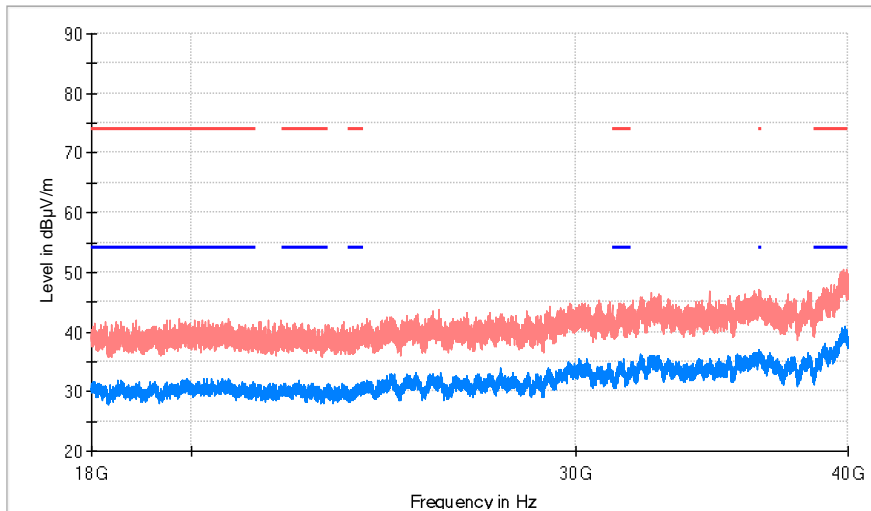
FREQUENCY RANGE 18 – 40 GHz

Lowest Channel



- AVG\_MAXH
- PK+\_MAXH
- TX limits to Spurious Emission FCC15.407 (1GHz to 40 GHz) Restricted Bands PK Limit
- TX limits to Spurious Emission FCC15.407 (1GHz to 40 GHz) Restricted Bands AVG Limit

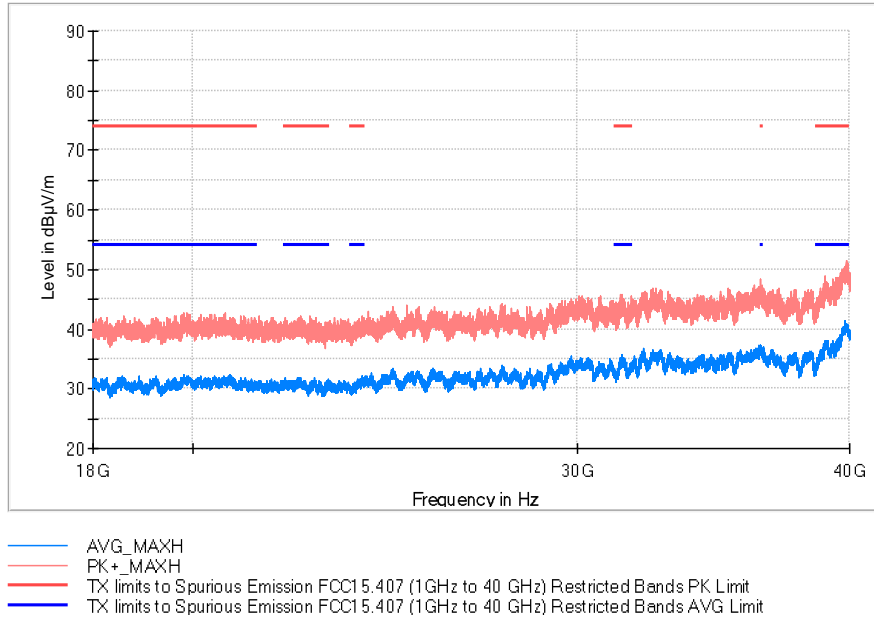
Middle Channel



- AVG\_MAXH
- PK+\_MAXH
- TX limits to Spurious Emission FCC15.407 (1GHz to 40 GHz) Restricted Bands PK Limit
- TX limits to Spurious Emission FCC15.407 (1GHz to 40 GHz) Restricted Bands AVG Limit

<b>TEST RESULTS (Cont.)</b>	<b>FREQUENCY RANGE 18 – 40 GHz</b>
-----------------------------	------------------------------------

**Highest Channel**



<b>TESTED SAMPLES:</b>	S/02
<b>TESTED CONDITIONS MODES:</b>	TC#03 (ac mode 40 MHz)
<b>TEST RESULTS:</b>	PASS

**Co-Location**

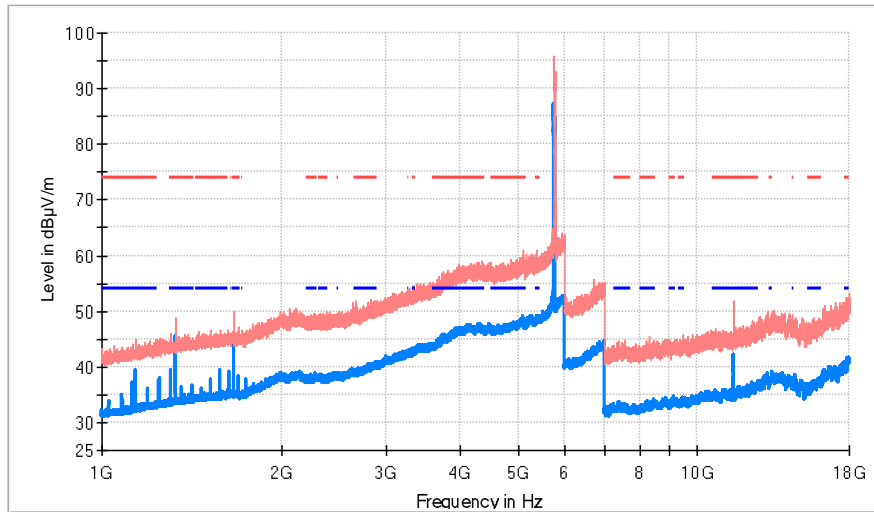
The test was performed with the equipment transmitting first with only the WiFi 5 GHz (WLAN0 CORE0) radio and repeated with the 2.4 GHz BTEDR (WLAN 0), WiFi 2.4GHz (WLAN0 CORE1) radios transmitting simultaneously to check the impact of the co-location of the other radio interfaces. The results and plots below show the worst results obtained.

**Frequency range 1 GHz – 40 GHz**

The results and plots below show the maximum measured levels in the 1- 40 GHz range and the restricted band 4.5 – 5.15 GHz.

<b>TEST RESULTS (Cont.)</b>	
<b>FREQUENCY RANGE</b>	<b>1 GHz – 18 GHz</b>

**Lowest Channel**



- AVG\_MAXH
- PK+\_MAXH
- - - TX limits to Spurious Emission FCC15.407 (1GHz to 40 GHz) Restricted Bands PK Limit
- - - TX limits to Spurious Emission FCC15.407 (1GHz to 40 GHz) Restricted Bands AVG Limit

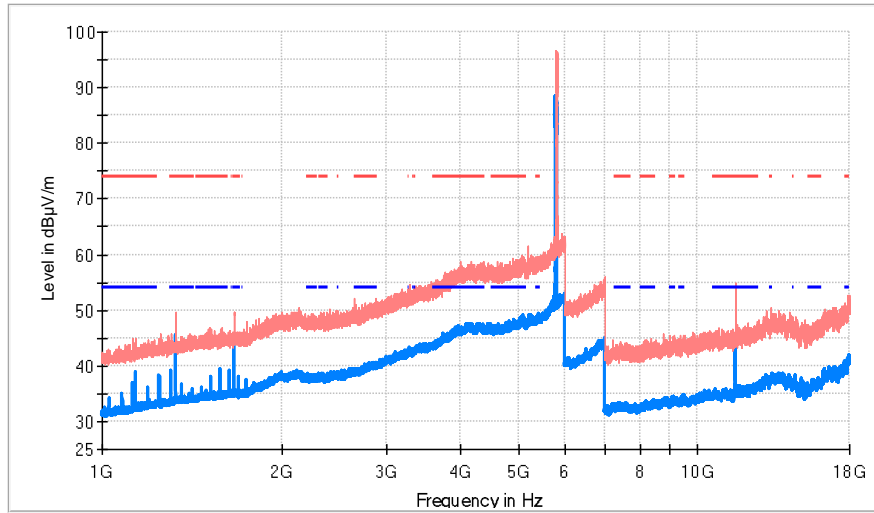
**Maximizations**

Frequency (MHz)	PK+_MAX H	AVG_MAXH (dBµV/m)	Pol	Azimuth (deg)	Comment
1138.636364	44.9	39.3	H	146.0	
1333.181818	48.9	45.4	H	-180.0	
1666.590909	50.0	45.6	H	-160.0	
5757.272727	94.1	87.3	V	78.0	Fundamental
11520.000000	52.0	42.3	V	77.0	

TEST RESULTS (Cont.)

1 GHz – 18 GHz

Highest Channel



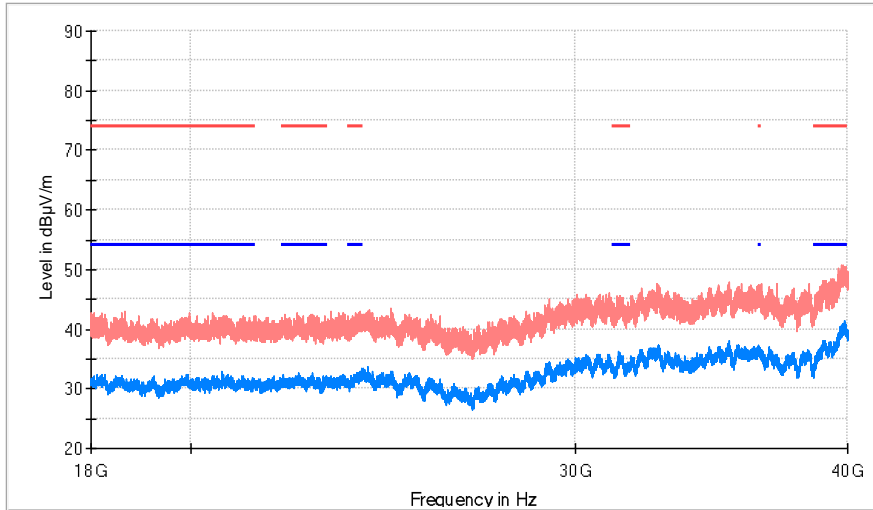
- AVG\_MAXH
- PK+\_MAXH
- TX limits to Spurious Emission FCC15.407 (1GHz to 40 GHz) Restricted Bands PK Limit
- TX limits to Spurious Emission FCC15.407 (1GHz to 40 GHz) Restricted Bands AVG Limit

Maximizations

Frequency (MHz)	PK+_MAX H	AVG_MAXH (dBµV/m)	Pol	Azimuth (deg)	Comment
1138.863636	43.9	38.9	H	142.0	
1333.181818	49.6	45.6	H	180.0	
1666.590909	49.4	45.4	H	-164.0	
5793.636364	93.9	88.3	V	94.0	Fundamental
11584.909091	54.2	44.5	V	82.0	

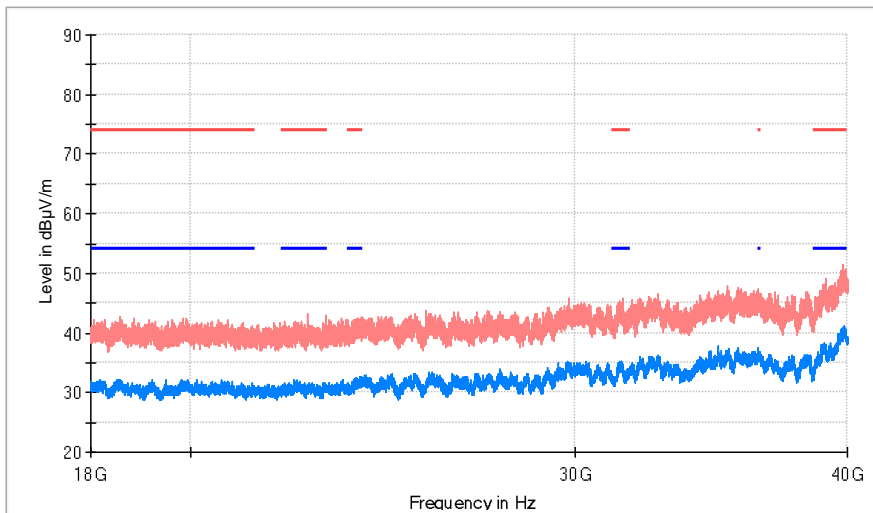
<b>TEST RESULTS (Cont.)</b>	
<b>FREQUENCY RANGE</b>	<b>18 GHz – 40 GHz</b>

**Lowest Channel**



- AVG\_ MAXH
- PK+\_ MAXH
- TX limits to Spurious Emission FCC15.407 (1GHz to 40 GHz) Restricted Bands PK Limit
- TX limits to Spurious Emission FCC15.407 (1GHz to 40 GHz) Restricted Bands AVG Limit

**Highest Channel**



- AVG\_ MAXH
- PK+\_ MAXH
- TX limits to Spurious Emission FCC15.407 (1GHz to 40 GHz) Restricted Bands PK Limit
- TX limits to Spurious Emission FCC15.407 (1GHz to 40 GHz) Restricted Bands AVG Limit

<b>TESTED SAMPLES:</b>	S/02
<b>TESTED CONDITIONS MODES:</b>	TC#03 (ac mode 80 MHz)
<b>TEST RESULTS:</b>	PASS

**Co-Location**

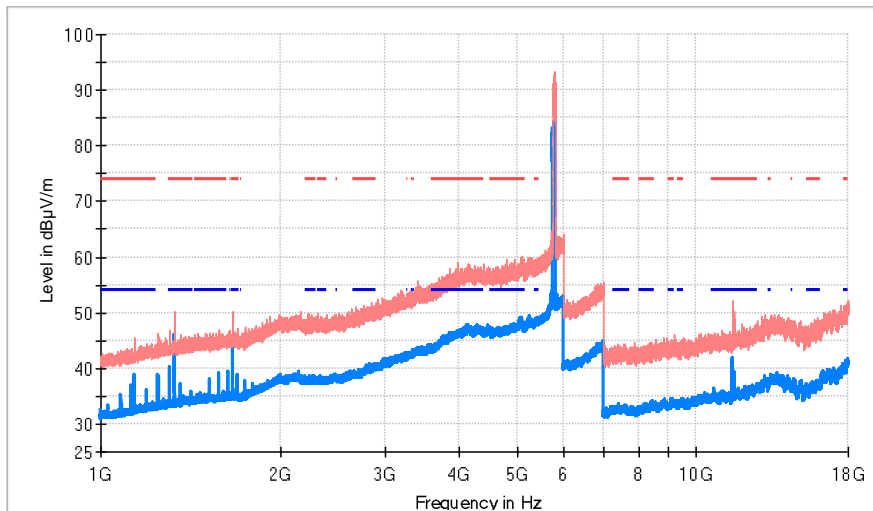
The test was performed with the equipment transmitting first with only the WiFi 5 GHz (WLAN0 CORE0) radio and repeated with the 2.4 GHz BTEDR (WLAN 0), WiFi 2.4GHz (WLAN0 CORE1) radios transmitting simultaneously to check the impact of the co-location of the other radio interfaces. The results and plots below show the worst results obtained.

**Frequency range 1 GHz – 40 GHz**

The results and plots below show the maximum measured levels in the 1- 40 GHz range and the restricted band 4.5 – 5.15 GHz.

<b>FREQUENCY RANGE</b>	<b>1 GHz – 18 GHz</b>
------------------------	-----------------------

**Middle Channel**



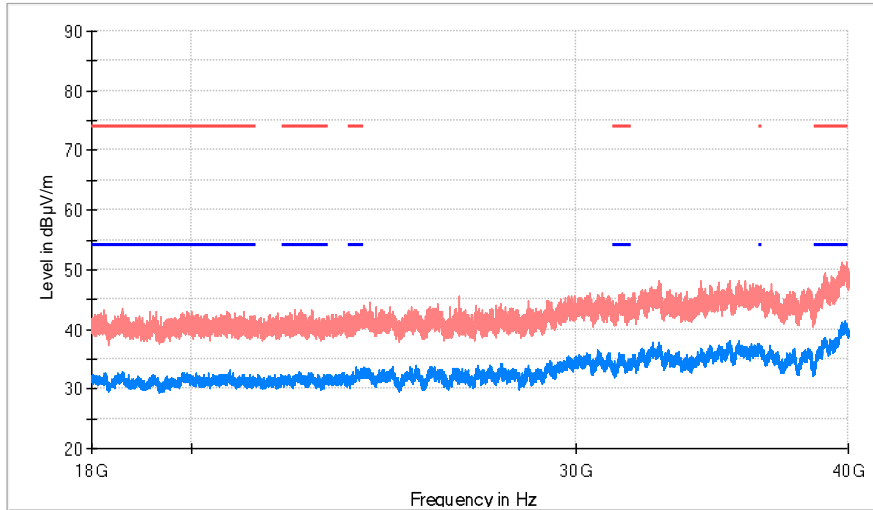
- AVG\_MAXH
- PK+\_MAXH
- TX limits to Spurious Emission FCC15.407 (1GHz to 40 GHz) Restricted Bands PK Limit
- TX limits to Spurious Emission FCC15.407 (1GHz to 40 GHz) Restricted Bands AVG Limit

**Maximizations**

Frequency (MHz)	PK+_MAX H	AVG_MAXH (dBµV/m)	Pol	Azimuth (deg)	Comment
1138.636364	44.7	38.7	H	180.0	
1334.090909	46.1	38.4	H	180.0	
1666.590909	49.1	45.3	V	145.0	
5777.272727	93.0	84.2	V	83.0	Fundamental
11530.363636	51.2	41.9	V	84.0	

<b>TEST RESULTS (Cont.):</b>	
<b>FREQUENCY RANGE</b>	<b>18 GHz – 40 GHz</b>

**Middle Channel**

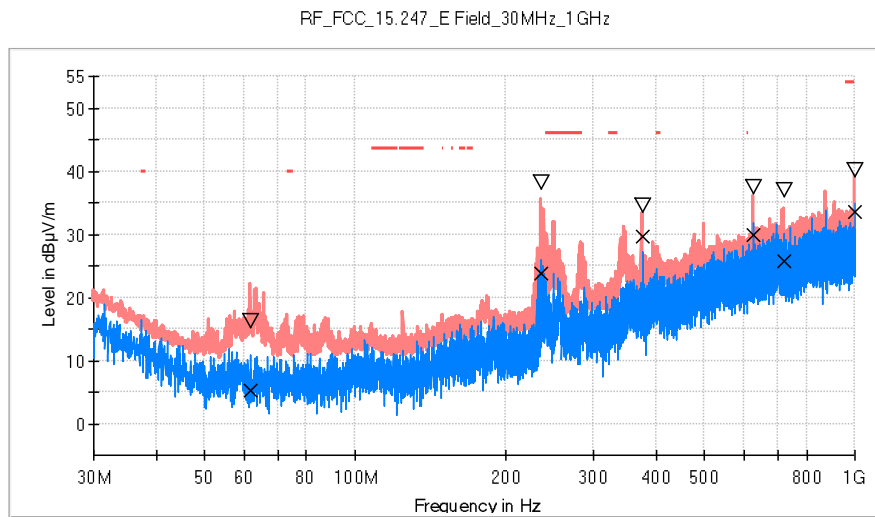


- AVG\_MAXH
- PK+\_MAXH
- TX limits to Spurious Emission FCC15.407 (1GHz to 40 GHz) Restricted Bands PK Limit
- TX limits to Spurious Emission FCC15.407 (1GHz to 40 GHz) Restricted Bands AVG Limit

<b>TEST RESULTS (Cont.):</b>	
<b>FREQUENCY RANGE</b>	<b>30 MHz – 1 GHz (Co-Location)</b>

**TEST MODE: SISO**

**Middle Channel**



- PK+\_MAXH
- PK+\_CLRWR
- TX limits to Spurious Emission FCC15.247 (30MHz to 1GHz) Restricted Bands QPK Limit
- ▽ MaxPeak-PK+ (Single)
- x QuasiPeak-QPK (Single)

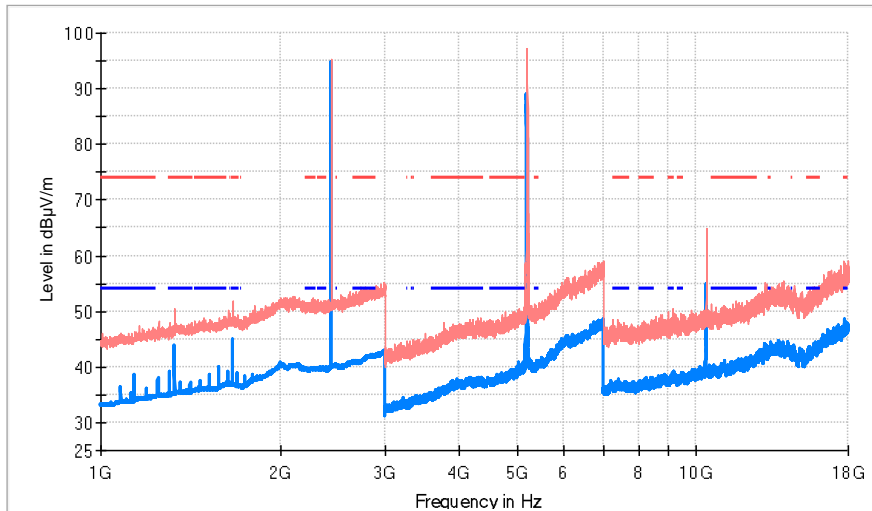
**Maximizations**

Frequency (MHz)	PK+_CLRWR (dBµV/m)	PK+_MAXH (dBµV/m)	Pol	Azimuth (deg)
61.622000	5.6	22.2	V	180.0
236.416000	24.8	35.4	H	-31.0
375.029000	27.1	33.3	H	-87.0
624.998000	29.6	36.0	V	-19.0
721.222000	24.5	34.1	V	-109.0
1000.000000	35.0	39.3	V	2.0



<b>TEST RESULTS(Cont.):</b>	
<b>FREQUENCY RANGE</b>	<b>1 GHz – 18 GHz</b>

**Middle Channel**



- AVG\_MAXH
- PK+\_MAXH
- - - TX limits to Spurious Emission FCC15.247 (1GHz to 26 GHz) Restricted Bands PK Limit
- - - TX limits to Spurious Emission FCC15.247 (1GHz to 26 GHz) Restricted Bands AVG Limit

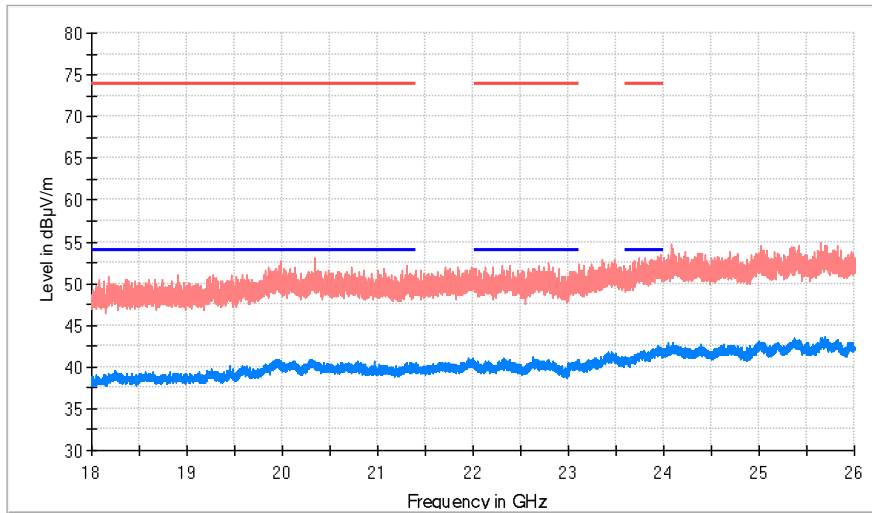
**Maximizations**

Frequency (MHz)	PK+_MAXH (dBµV/m)	AVG_MAXH (dBµV/m)	Pol	Azimuth (deg)	Comment
1333.000000	50.3	43.9	H	-135.0	
1666.500000	51.6	44.8	V	-152.0	
2440.000000	95.4	94.7	V	-180.0	Bt & WiFi
5201.500000	96.8	89.1	V	-101.0	WiFi Fundamental
10400.500000	61.5	54.8	H	-174.0	

<b>TEST RESULTS(Cont.):</b>	
-----------------------------	--

<b>FREQUENCY RANGE</b>	<b>18 GHz – 26 GHz</b>
------------------------	------------------------

**Middle Channel**

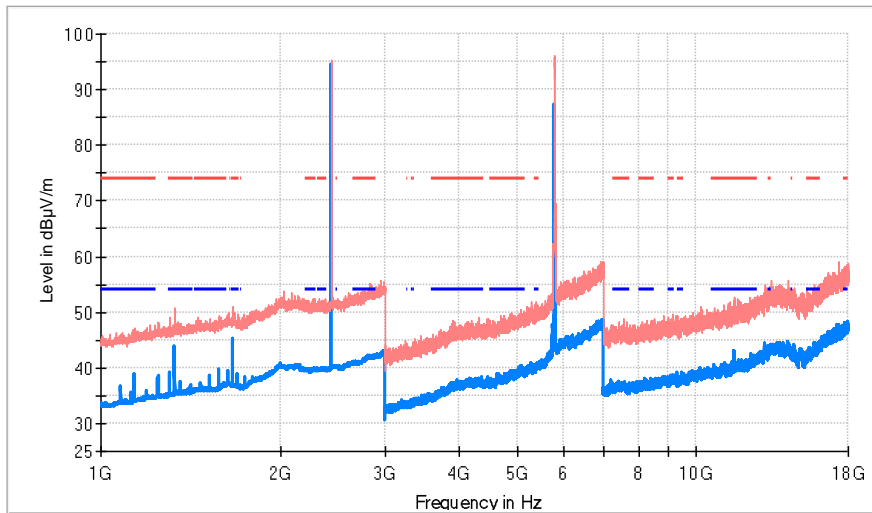


- AVG\_MAXH
- PK+\_MAXH
- TX limits to Spurious Emission FCC15.247 (1GHz to 26 GHz) Restricted Bands PK Limit
- TX limits to Spurious Emission FCC15.247 (1GHz to 26 GHz) Restricted Bands AVG Limit

<b>TEST RESULTS(Cont.):</b>																																				
<b>FREQUENCY RANGE</b>	<b>30 MHz – 1 GHz (Co-Location)</b>																																			
<b>TEST MODE: MIMO</b> <b>Middle Channel</b>																																				
RF_FCC_15.247_E Field_30MHz_1GHz																																				
<ul style="list-style-type: none"> <li><span style="color: red;">—</span> PK+_MAXH</li> <li><span style="color: blue;">—</span> PK+_CLRWR</li> <li><span style="color: red;">—</span> TX limits to Spurious Emission FCC15.247 (30MHz to 1GHz) Restricted Bands QPK Limit</li> <li>▽ MaxPeak-PK+ (Single)</li> <li>x QuasiPeak-QPK (Single)</li> </ul>																																				
<b>Maximizations</b>																																				
<table border="1"> <thead> <tr> <th>Frequency (MHz)</th> <th>PK+_CLRWR (dBµV/m)</th> <th>PK+_MAXH (dBµV/m)</th> <th>Pol</th> <th>Azimuth (deg)</th> </tr> </thead> <tbody> <tr> <td>64.774500</td> <td>12.7</td> <td>26.7</td> <td>V</td> <td>26.0</td> </tr> <tr> <td>124.963000</td> <td>14.4</td> <td>18.3</td> <td>V</td> <td>69.0</td> </tr> <tr> <td>249.996000</td> <td>18.7</td> <td>33.6</td> <td>V</td> <td>80.0</td> </tr> <tr> <td>374.980500</td> <td>26.9</td> <td>34.7</td> <td>V</td> <td>-56.0</td> </tr> <tr> <td>624.998000</td> <td>31.0</td> <td>34.8</td> <td>V</td> <td>-130.0</td> </tr> <tr> <td>1000.000000</td> <td>27.5</td> <td>37.2</td> <td>V</td> <td>-73.0</td> </tr> </tbody> </table>		Frequency (MHz)	PK+_CLRWR (dBµV/m)	PK+_MAXH (dBµV/m)	Pol	Azimuth (deg)	64.774500	12.7	26.7	V	26.0	124.963000	14.4	18.3	V	69.0	249.996000	18.7	33.6	V	80.0	374.980500	26.9	34.7	V	-56.0	624.998000	31.0	34.8	V	-130.0	1000.000000	27.5	37.2	V	-73.0
Frequency (MHz)	PK+_CLRWR (dBµV/m)	PK+_MAXH (dBµV/m)	Pol	Azimuth (deg)																																
64.774500	12.7	26.7	V	26.0																																
124.963000	14.4	18.3	V	69.0																																
249.996000	18.7	33.6	V	80.0																																
374.980500	26.9	34.7	V	-56.0																																
624.998000	31.0	34.8	V	-130.0																																
1000.000000	27.5	37.2	V	-73.0																																

<b>TEST RESULTS(Cont.):</b>	
<b>FREQUENCY RANGE</b>	<b>1 GHz – 18 GHz</b>

**Middle Channel**



- AVG\_MAXH
- PK+\_MAXH
- - - TX limits to Spurious Emission FCC15.247 (1GHz to 26 GHz) Restricted Bands PK Limit
- - - TX limits to Spurious Emission FCC15.247 (1GHz to 26 GHz) Restricted Bands AVG Limit

**Maximizations**

Frequency (MHz)	PK+_MAXH (dBµV/m)	AVG_MAXH (dBµV/m)	Pol	Azimuth (deg)	Comment
1333.000000	50.8	43.9	H	-180.0	
1666.500000	51.1	45.1	H	-156.0	
2440.000000	95.3	94.6	V	180.0	BT & WiFi
5784.000000	95.7	87.1	V	95.0	WiFi Fundamental
11570.500000	52.5	43.0	H	-132.0	

<b>TEST RESULTS(Cont.):</b>	
<b>FREQUENCY RANGE</b>	<b>18 GHz – 26 GHz</b>
<p><b>Middle Channel</b></p> <p>Level in dBµV/m</p> <p>Frequency in GHz</p> <ul style="list-style-type: none"> <li><span style="color: blue;">—</span> AVG_MAXH</li> <li><span style="color: red;">—</span> PK+_MAXH</li> <li><span style="color: red;">—</span> TX limits to Spurious Emission FCC15.247 (1GHz to 26 GHz) Restricted Bands PK Limit</li> <li><span style="color: blue;">—</span> TX limits to Spurious Emission FCC15.247 (1GHz to 26 GHz) Restricted Bands AVG Limit</li> </ul>	