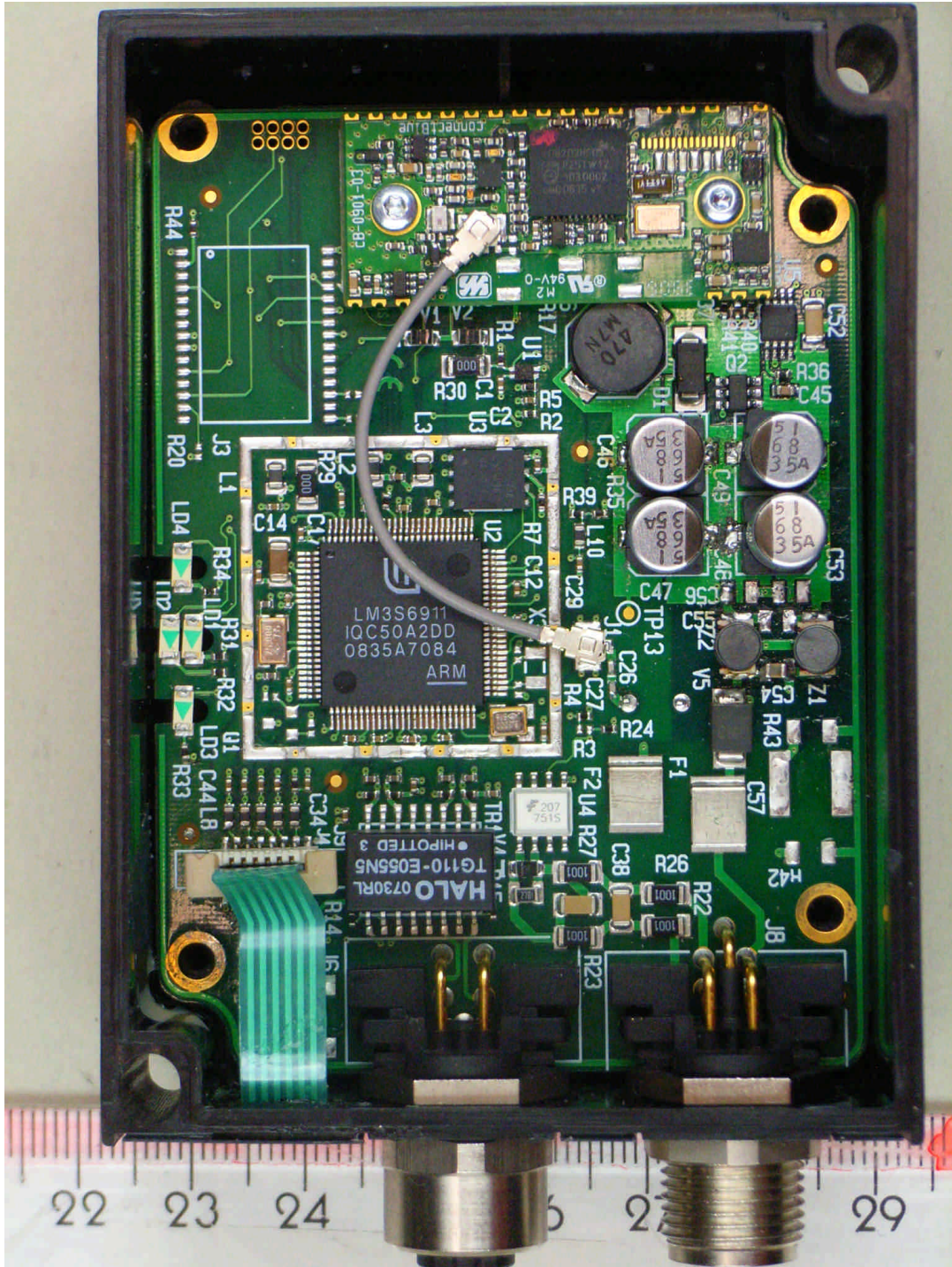


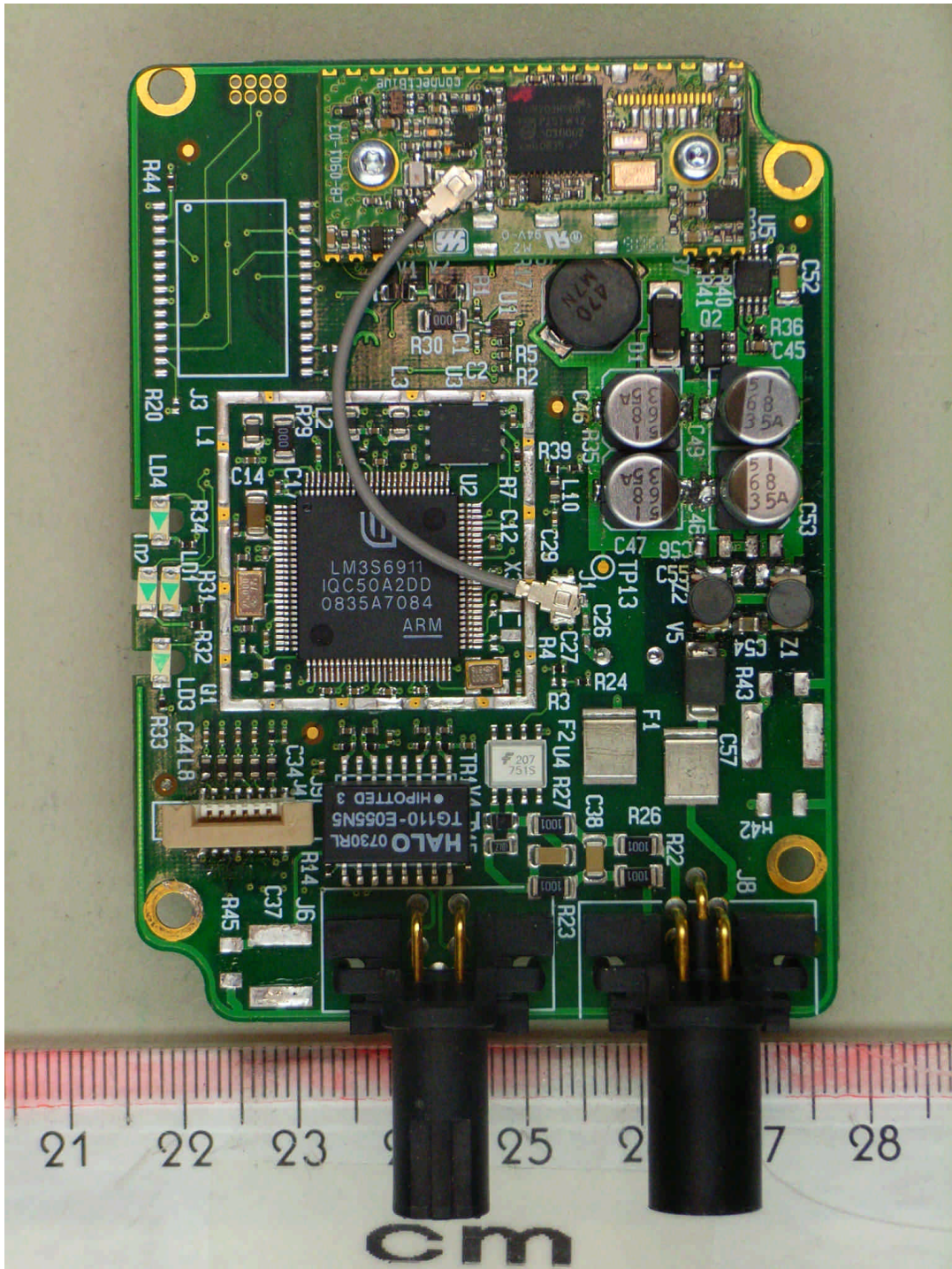
Annex C of test report F082568E02
EUT: cB-0901-0302AP inside RBEPA
Manufacturer: connectBlue AB



82568_d.jpg

RBEPA, internal view

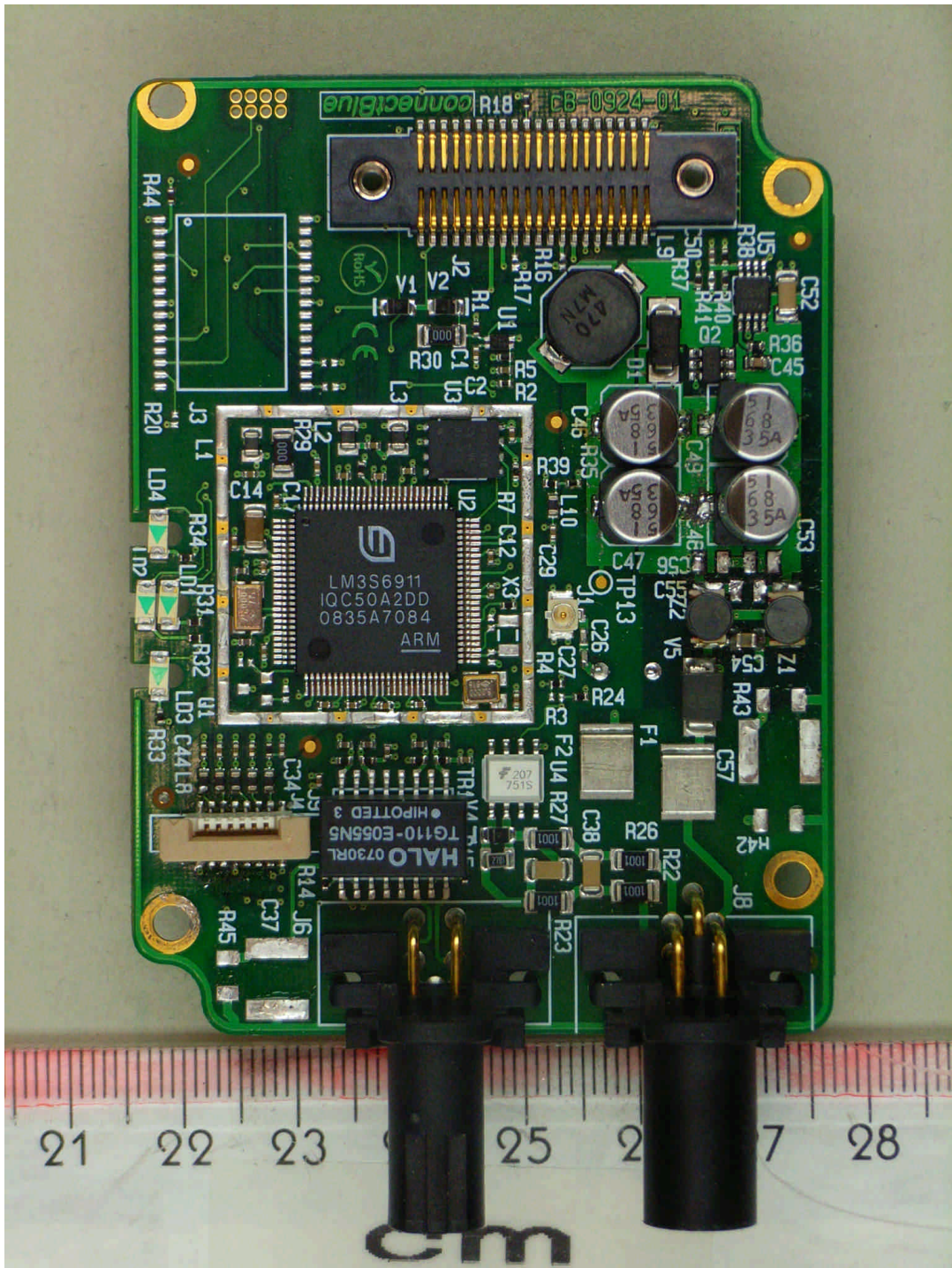
Annex C of test report F082568E02
EUT: cB-0901-0302AP inside RBEPA
Manufacturer: connectBlue AB



82568_f.jpg

RBEPA, main PCB, top view

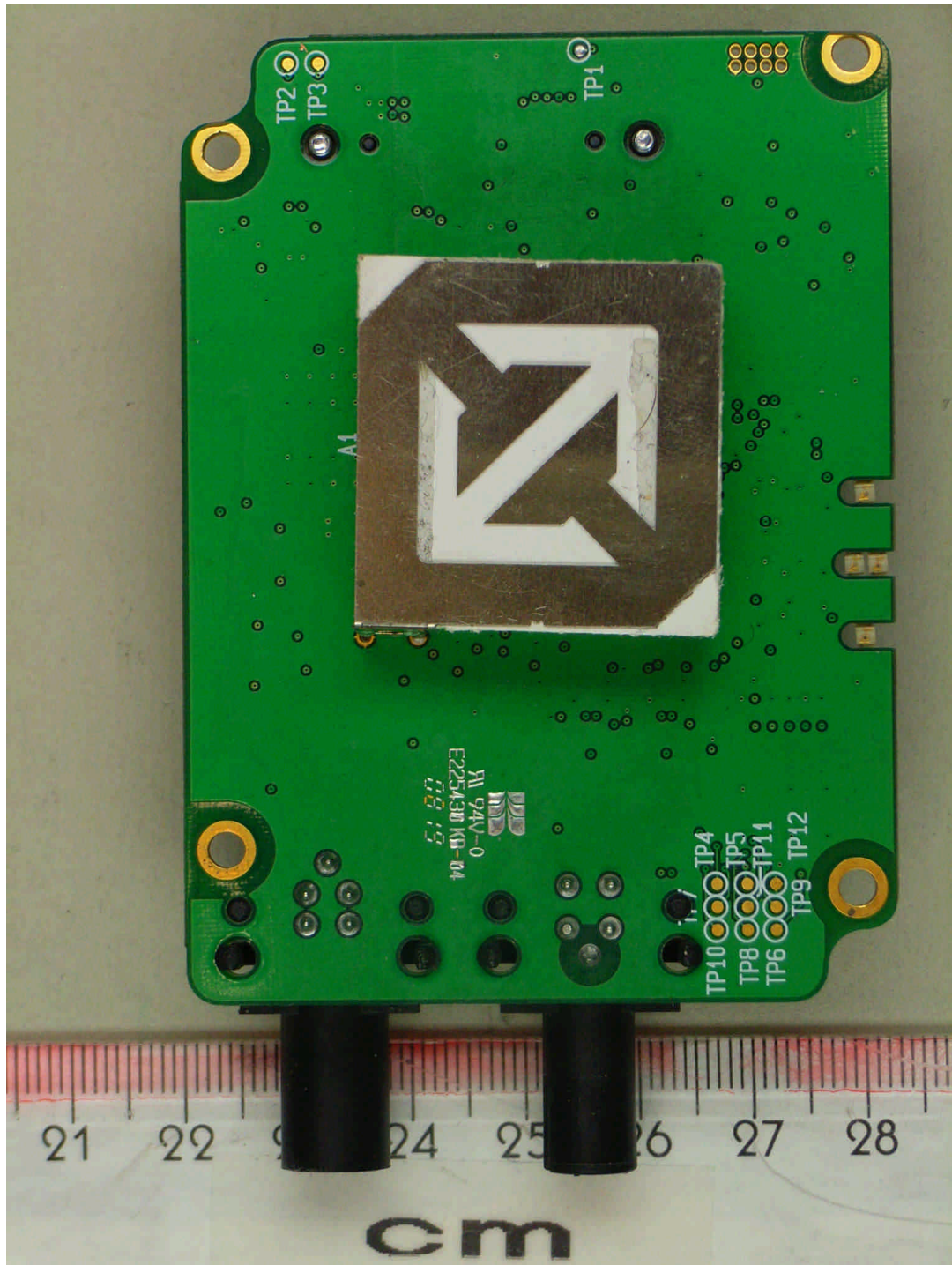
Annex C of test report F082568E02
EUT: cB-0901-0302AP inside RBEPA
Manufacturer: connectBlue AB



82568_g.jpg

RBEPA, main PCB, top view, Bluetooth module removed

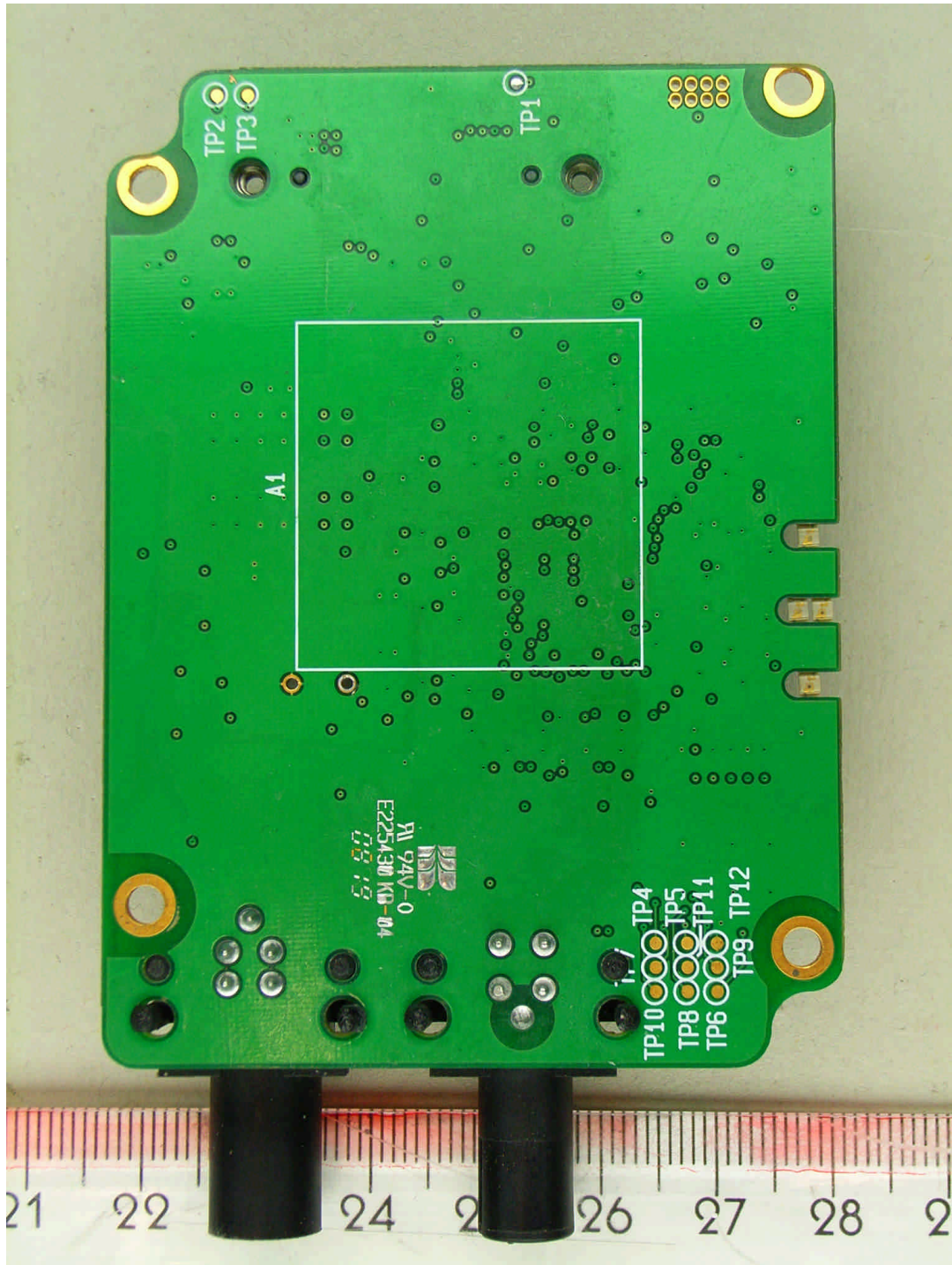
Annex C of test report F082568E02
EUT: cB-0901-0302AP inside RBEPA
Manufacturer: connectBlue AB



82568_e.jpg

RBEPA, main PCB, bottom view

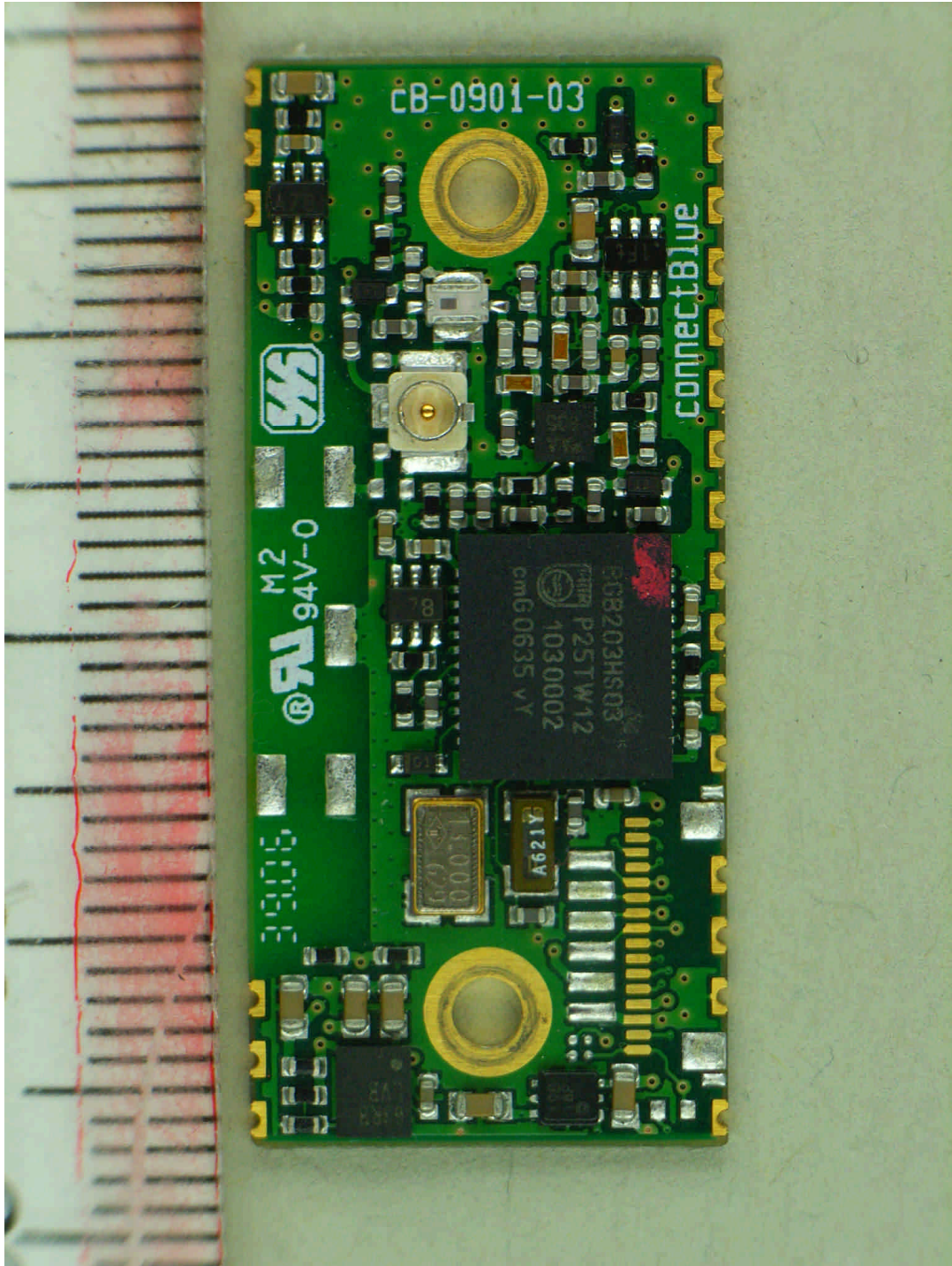
Annex C of test report F082568E02
EUT: cB-0901-0302AP inside RBEPA
Manufacturer: connectBlue AB



82568_j.jpg

RBEPA, main PCB, bottom view, antenna desoldered

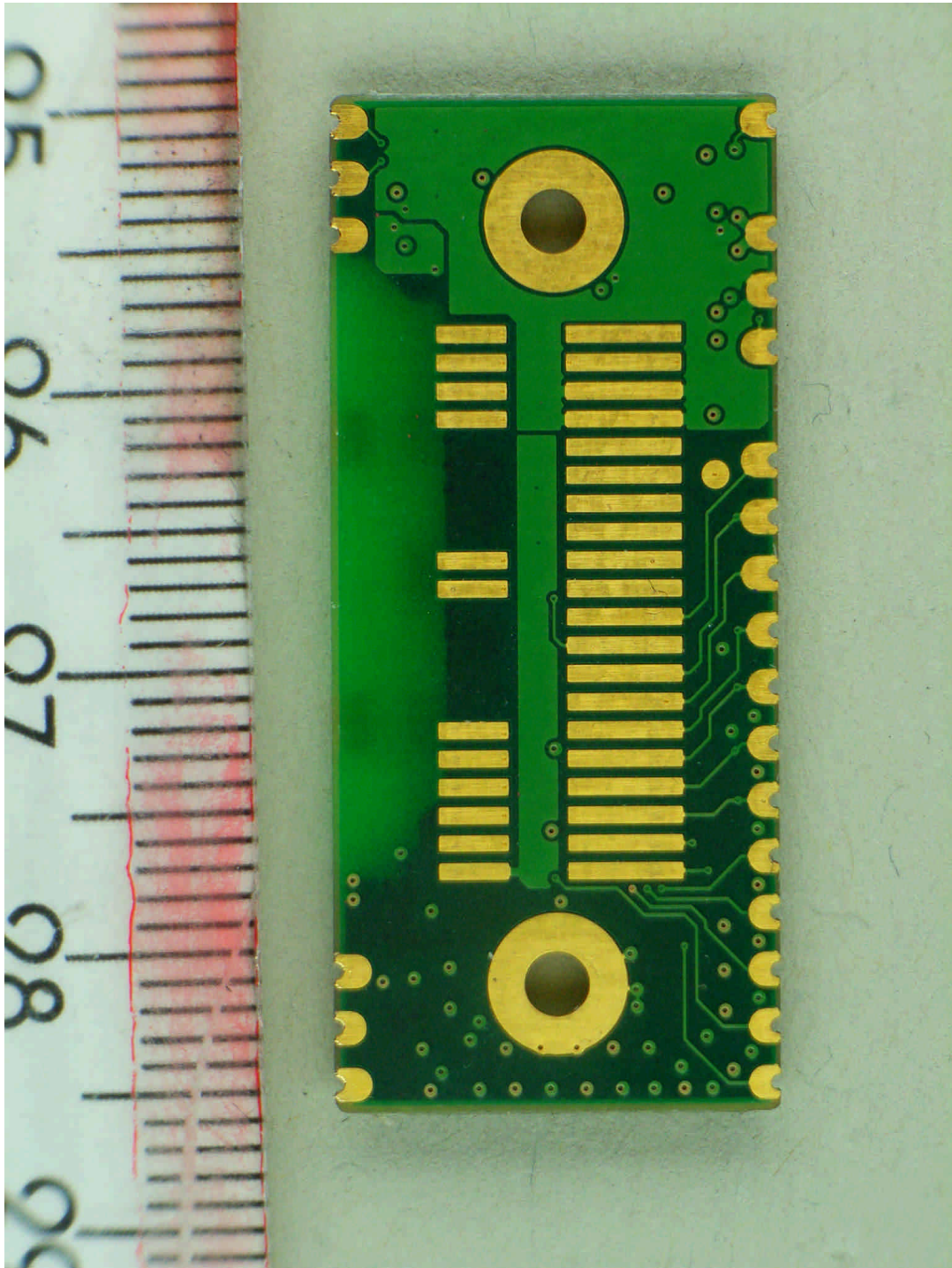
Annex C of test report F082568E02
EUT: cB-0901-0302AP inside RBEPA
Manufacturer: connectBlue AB



82568_h.jpg

cB-0901-0302AP, top view

Annex C of test report F082568E02
EUT: cB-0901-0302AP inside RBEPA
Manufacturer: connectBlue AB



82568_i.jpg

cB-0901-0302AP, bottom view