
External HDD

User Manual



TELEGATE

Introduction to V-Drive

V-Drive is a portable storage product that can compress, store and backup a variety of data. Coding function is incorporated in the drive, which enables users to preserve his own information. Extensibility with smart card used in digital camera and camcorder is the greatest excellence of V-Drive. (Our products are engineered to meet the highest standards of quality, functionality and design. We hope you thoroughly enjoy your V-Drive.)

Features

1. Extensible with smart card used as in digital camera
2. Function of file compression included.
3. Coding function incorporated, to protect personal information of a user
4. Provision of handy deluxe case for V-Drive
5. Easy driver installation
6. 10 year or more of data retention.
7. Fast data transfer rate: USB maximum speed of 12 M bit/sec.
8. Hot Plug & Play with USB Interface compliant
9. IBM PC/AT or compatible Desktop / Notebook / Sub-Notebook with Pentium 100MHz or more compliant
10. High capacity of 32MB to 1GB, or Beyond with later version of V-drive

Introduction to V-drive

*** Specification**

1. Product name : V-Drive
2. Compatible PC : IBM PC/AT compatible PC with Pentium 100MHz or more
3. O/S Compatibility - Windows 98, Windows 98SE, Windows ME
- Windows 2000, Driver for MAC
(download the driver from Internet after the coming April)
4. Data Capacity: 32MB/ 64MB/ 128MB/ 256MB/ 1,000MB (without Smart Card)
5. Supported Interface - USB Spec 1.1
- UHCI(Universal Host Controller Interface)
- OHCI(Open Host Controller Interface)
6. Data Retention : 10 years or more
7. Data Transfer Rate: 12M bit /sec Max
8. Two LEDs - Green LED : V-Drive connected to USB port
- Red LED : V-Drive with Smart Card
9. Power Supply: Use USB-bus power (4.5V ~ 5.5V)
10. Extensibility : extensible with smart card (recognized as one extended disk)
11. Data Compression : file compression function incorporated
12. Coding : password used to protect personal information
13. Approval: FCC, VCCI, CE Compliant (Approval Expected)
14. Dimension (Hx Wx D): 12.5mm x 45mm x 70 mm
15. Environment - Temperature: - 20 C ~ 80 C
- Humidity : 5 % - 95 %
16. Operational Temperature : 0 C ~ 45 C
17. Included Accessories : long and short cable for USB, users' manual, deluxe case

FCC Compliance Statement

Caution : Any changes or modifications not expressly approved by the party responsible for compliance could void the user's authority to operate the equipment

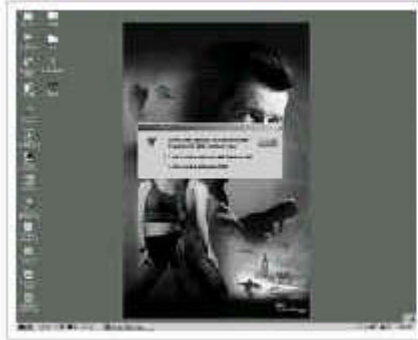
NOTE: This equipment has been tested and found to comply with the limits for a Class B digital device, pursuant to Part 15 of the FCC Rules. These limits are designed to provide reasonable protection against harmful interference in a residential installation. This equipment generates, uses and can radiate radio frequency energy and, if not installed and used in accordance with the instructions, may cause harmful interference to radio communications. However, there is no guarantee that interference will not occur in a particular installation.

If this equipment does cause harmful interference to radio or television reception, which can be determined by turning the equipment off and on, the user is encouraged to try to correct the interference by one or more of the following measures:

- Reorient or relocate the receiving antenna.
- Increase the separation between the equipment and receiver.
- Connect the equipment into an outlet on a circuit different from that to which the receiver is connected.
- Consult the dealer or an experienced radio/TV technician for help.

How to Install

1. Check if main parts are included in the package (long & short cable, V-drive).
2. Connect the given cable to USB port of your Desktop or Notebook PC.
3. Connect the V-Drive.
4. Message of 'Looking for new hardware..' shows on the screen.
5. Insert installation diskette into floppy disc drive.
6. Choose 'Select from device list' and click 'Next' button.
7. Choose 'Floppy Disc Drive' and click 'Next' button.
8. Wait a few seconds to complete the first installation,
and to see the same message of no. 6
9. Repeat the procedures of no. 6 and no. 7.
10. After a couple of seconds, message of 'driver sucessfully installed' will come out.



First install driver for Y-Drive before connecting to USB port.

When the given CD is placed in the Cd-Rom drive, Setup procedure will be automatically run as in the below picture.

If the Setup does not start automatically, please double click the file named SETUP.EXE in the CD.

Select O/S first and then click 'Install' on the upper right.

<Ref.> OS : meaning Operating System, such as Windows 98, Windows Me, and Windows 2000.



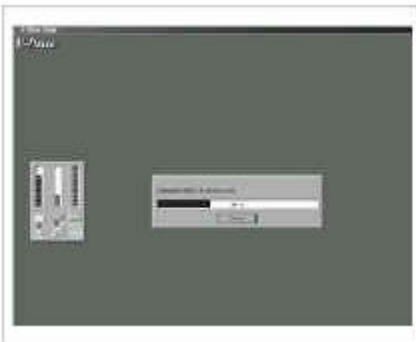
Preparing for Y-Drive Manager setup



Press 'Next' on the left.



Press 'Next' on the left.



Installing the Manager from CD to PC

If installation errors occur, then please restart the installation process.
The errors may come from D/S or CD-ROM. Please check them in case of continuing errors.



Press 'OK', then systems with Windows 2000 will be rebooted, but systems with Windows 98 or ME will not restart.
Icon of V-Drive will show on the screen

<Note> Please make sure that systems with Windows 2000 should be rebooted in order to avoid possible installation errors.

Guarantee and Service

This product is guaranteed by Telegate for one year commencing on the date of purchase. Within the guarantee period we will eliminate, free of charge, any defects due to faulty workmanship or materials by repairing or exchanging parts. Please note that data in a drive could not be preserved in case that you request on Customer Service Center.

Service under guarantee is provided only upon presentation of reasonable evidence that the date of the claim is within the guarantee period.

The guarantee is void if the defect arises from accidental damage, misuse or neglect by users, and natural disasters. Service fee will be charged even within the period of guarantee against the following defects due to;

1. Physical impacts such as drop of the product,
or insert of alien substance into the drive
2. Alterations or repair carried out by unauthorized persons
3. Fire or natural disasters
4. Malfunction of USB power point
5. Normal and natural wear of parts
6. Improper use or neglect by users

(This guarantee extends to every country where this appliance is supplied by Telegate or its appointed distributor and where no import restrictions or other legal regulations hinder or prevent service being given under guarantee.)

Telegate Co. Ltd.
301 Sunjin building
82-8 Yangjae-dong, Seocho-gu,
Seoul, South Korea 137-130
Customer Service Center
- Phone) +82-2-575-6362
- Fax) +82-2-575 – 6771
- E-Mail : webmaster@v-drive.co.kr
webmaster@telegate.co.kr

Homepage : www.telegate.co.kr
www.v-drive.co.kr

FAQ

- Customers without installation diskette
 - Download installation program(Driver) from Homepage.
Select one from the followings;
 - ➔ users for Windows 98 / 98SE / ME
 - ➔ users for Window 2000 (in expected April)
 - ➔ users for Mac (in expected April)

- What are compatible systems with V-Drive?
 - You can connect a V-Drive with IBM PC and/or notebook PC with more than Pentium 100MHz and external USB port, run by operating system such as Windows 98, Windows 98SE, Windows ME.
(Newer various of V-Drives compatible with Windows 2000 and MAC will be released in the coming April.)

- What should I do if my PC cannot recognize a V-Drive?
 - click the buttons as follows; ' Start' → ' Set-up' → ' Control Panel' → ' System'
And check if there is a (USB) controller in the ' Device Manager.'

 - ➔ With USB controller
 - ; Check first if V-Drive is recognized or not. If it is recognized as ' Unknown Device' , remove it and re-setup the drive. If it is not recognized at all, re-setup the drive from the ' New Hardware Setup' window.

 - ➔ Without USB controller
 - ; Enable USB controller in CMOS setup (Bios setting) of your PC.
(CMOS Setup will come out when pressing ' Del' or ' F2' right after powering on your PC.)

- What should users be cautious about, in order to properly use V-Drive?
 - Users should be cautious about electrical shock, high humidity, physical impact which might cause product failure.