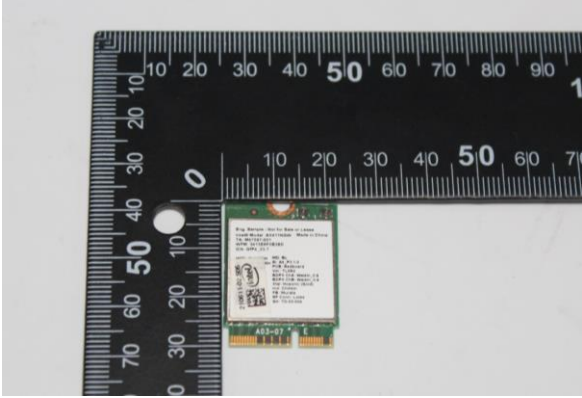


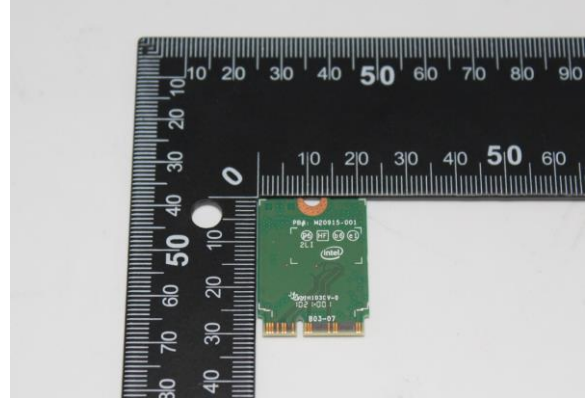
Annex F. Photographs

F.1 Test Sample

NGW Module Front : 210611-02. S05



NGW Module Back: 210611-02. S05





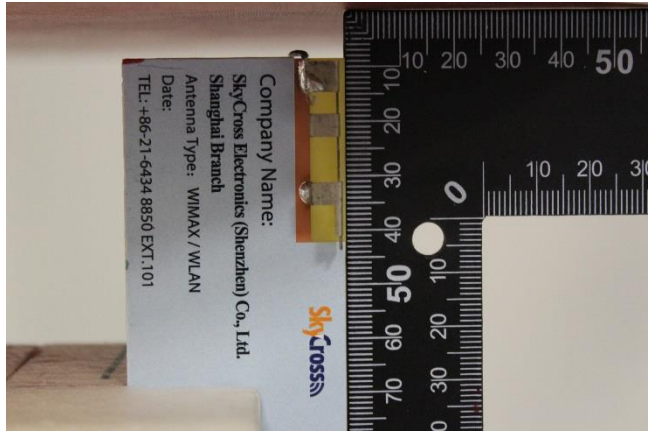


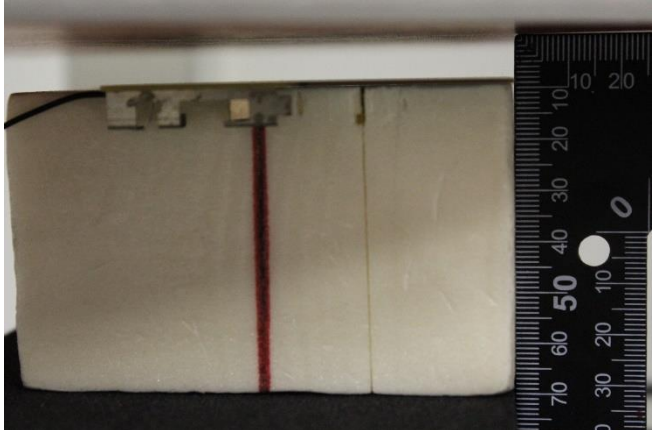
Platform Extender: 210611-03.S27




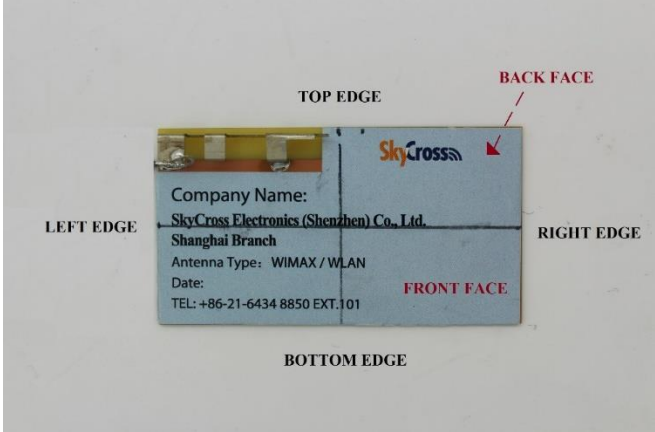
Laptop : 200611-01.S18



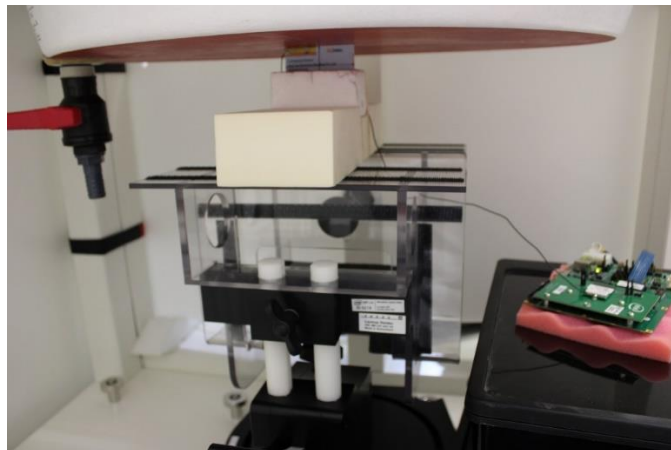
F.2 Test positions

Top Edge 8mm	Bottom Edge 8mm
	
Left Edge 8mm	Right Edge 8mm
	
Front Face 8mm	Back Face 8mm
	

F.3 Antenna host platform location and adjacent edge positions relative to the body

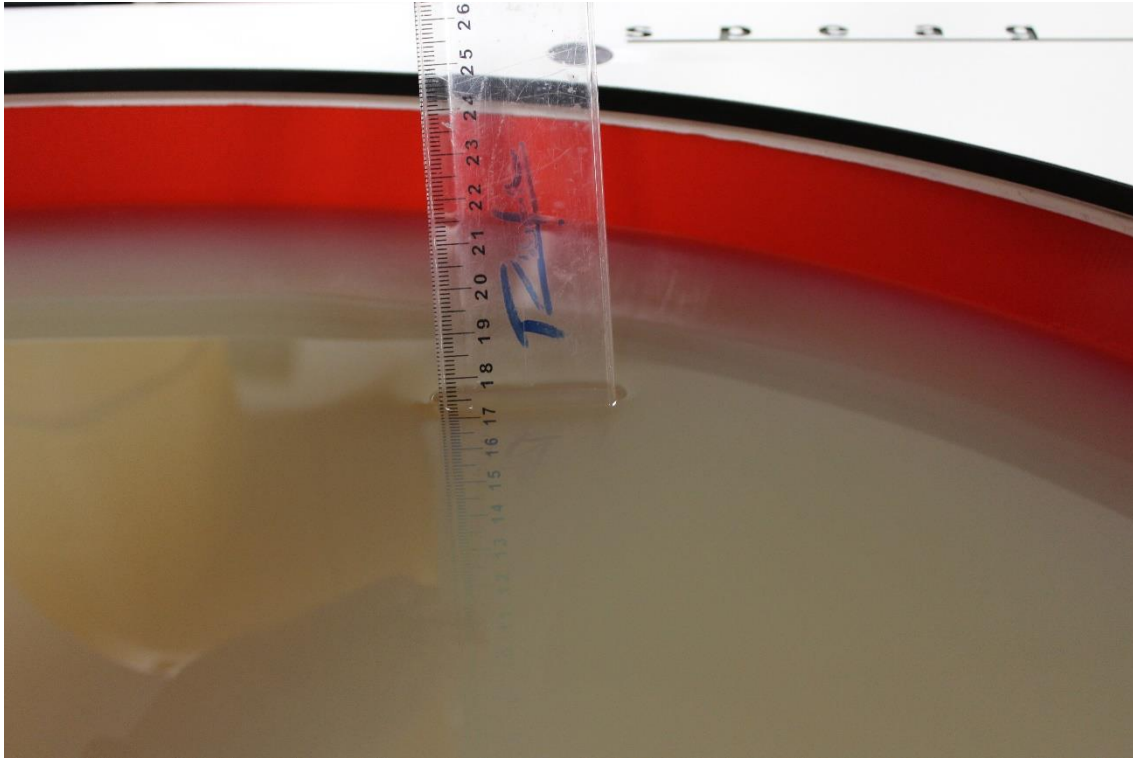
Antenna Front View	Antenna Positions
 <p>A photograph showing the front view of an antenna host platform. A black ruler with white markings in centimeters is placed above the antenna. The antenna is a rectangular grey PCB with a yellow antenna element on the left side. A white label is affixed to the center of the PCB, containing the following text: "Company Name: SkyCross Electronics (Shenzhen) Co., Ltd. Shanghai Branch", "Antenna Type: WIMAX / WLAN", "Date:", and "TEL: +86-21-6434 8850 EXT.101". The SkyCross logo is visible on the right side of the PCB.</p>	 <p>A diagram of the antenna host platform showing its edges and faces. The edges are labeled: "TOP EDGE" at the top, "BOTTOM EDGE" at the bottom, "LEFT EDGE" on the left, and "RIGHT EDGE" on the right. The faces are labeled: "FRONT FACE" in red text on the right side and "BACK FACE" in red text with a red arrow pointing to the top edge on the right side. A white label with the same text as in the front view is shown on the front face. The SkyCross logo is also visible on the top edge.</p>

General Setup



F.4 Phantom liquid level during measurements

ELI phantom Body liquid SAR Dasy SPEAG MBL600-6000V6 Batch -180206-04



End of the report

This page is intentionally left blank and marks the last page of the test report.