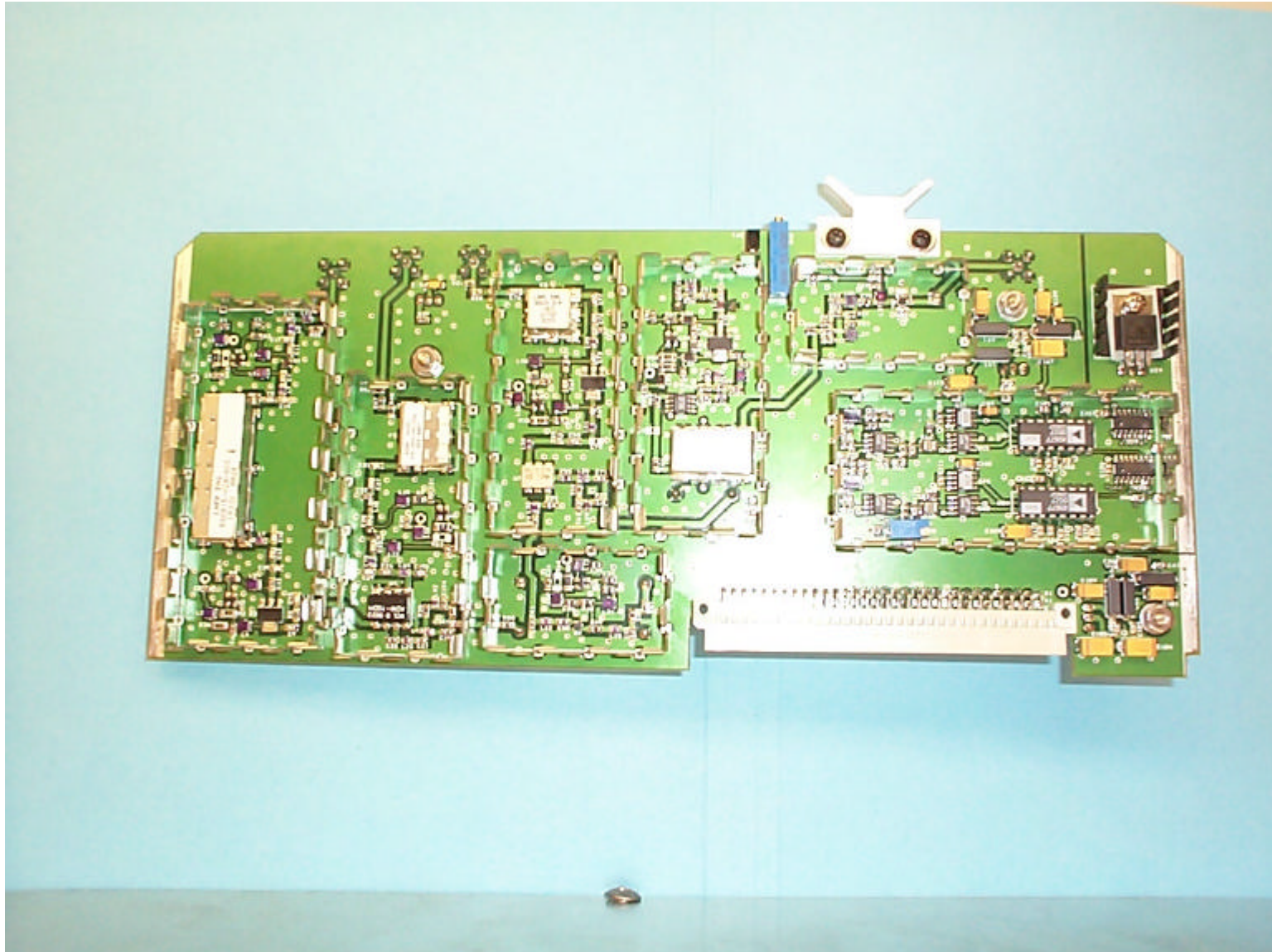
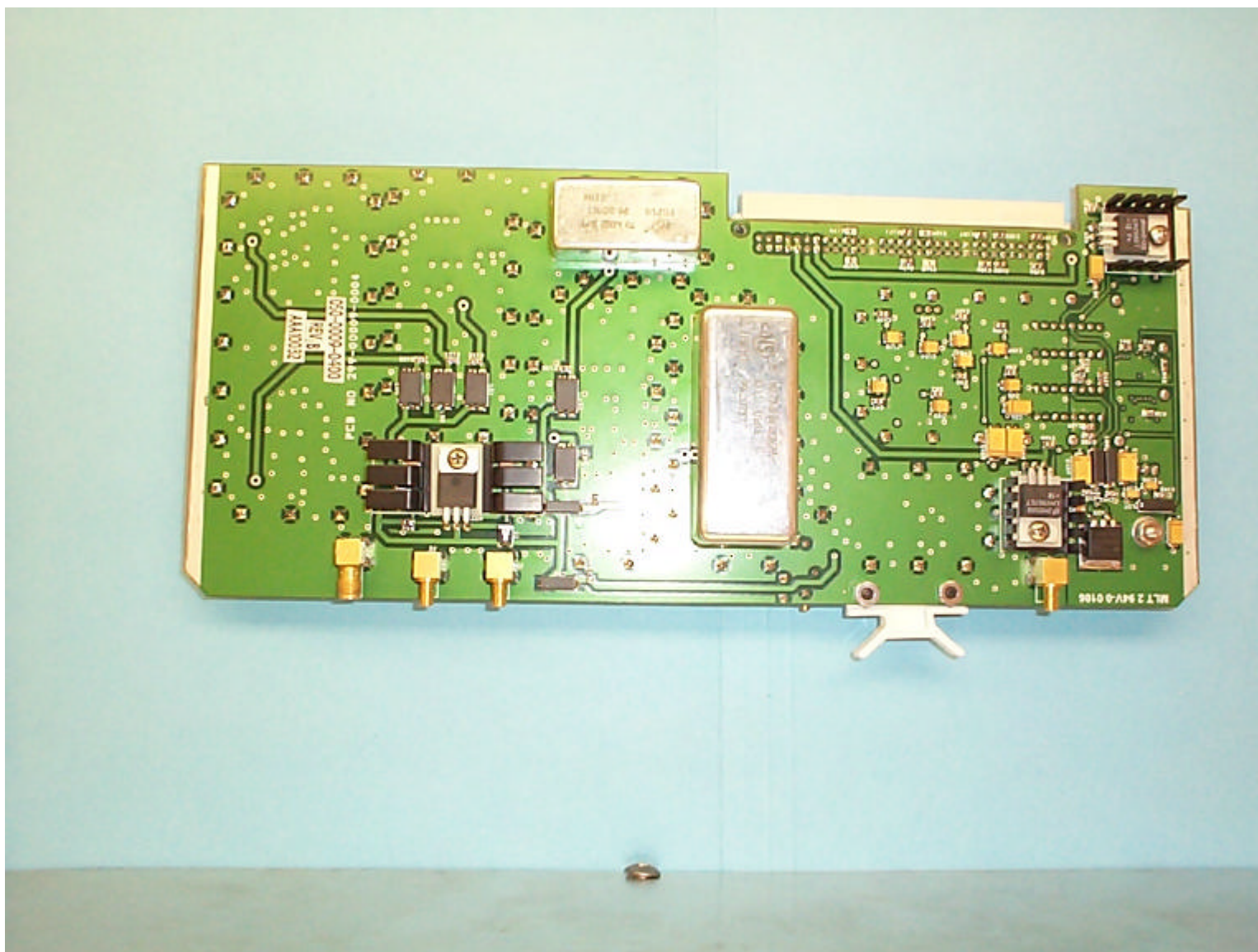


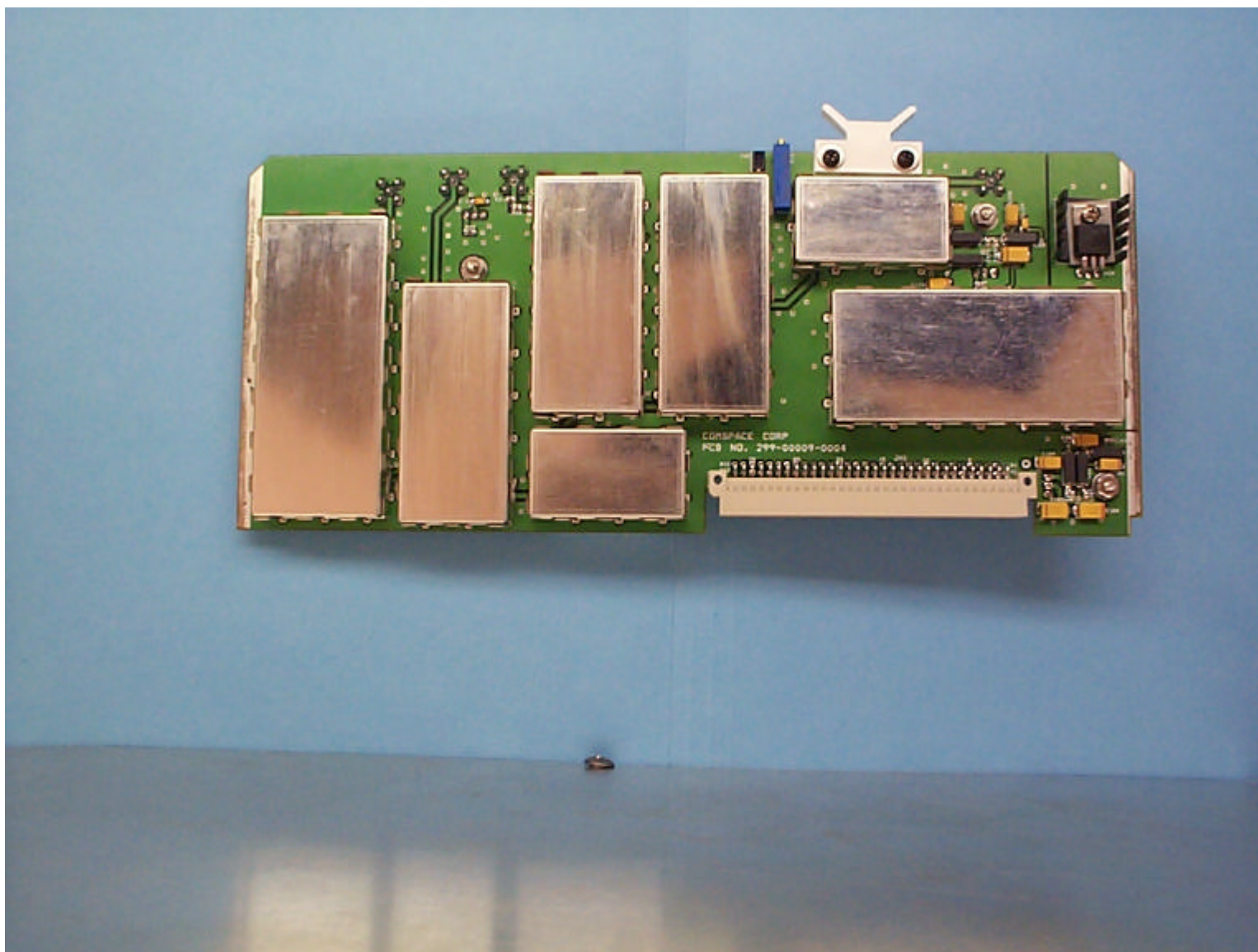
18 INTERNAL EUT PICTURES



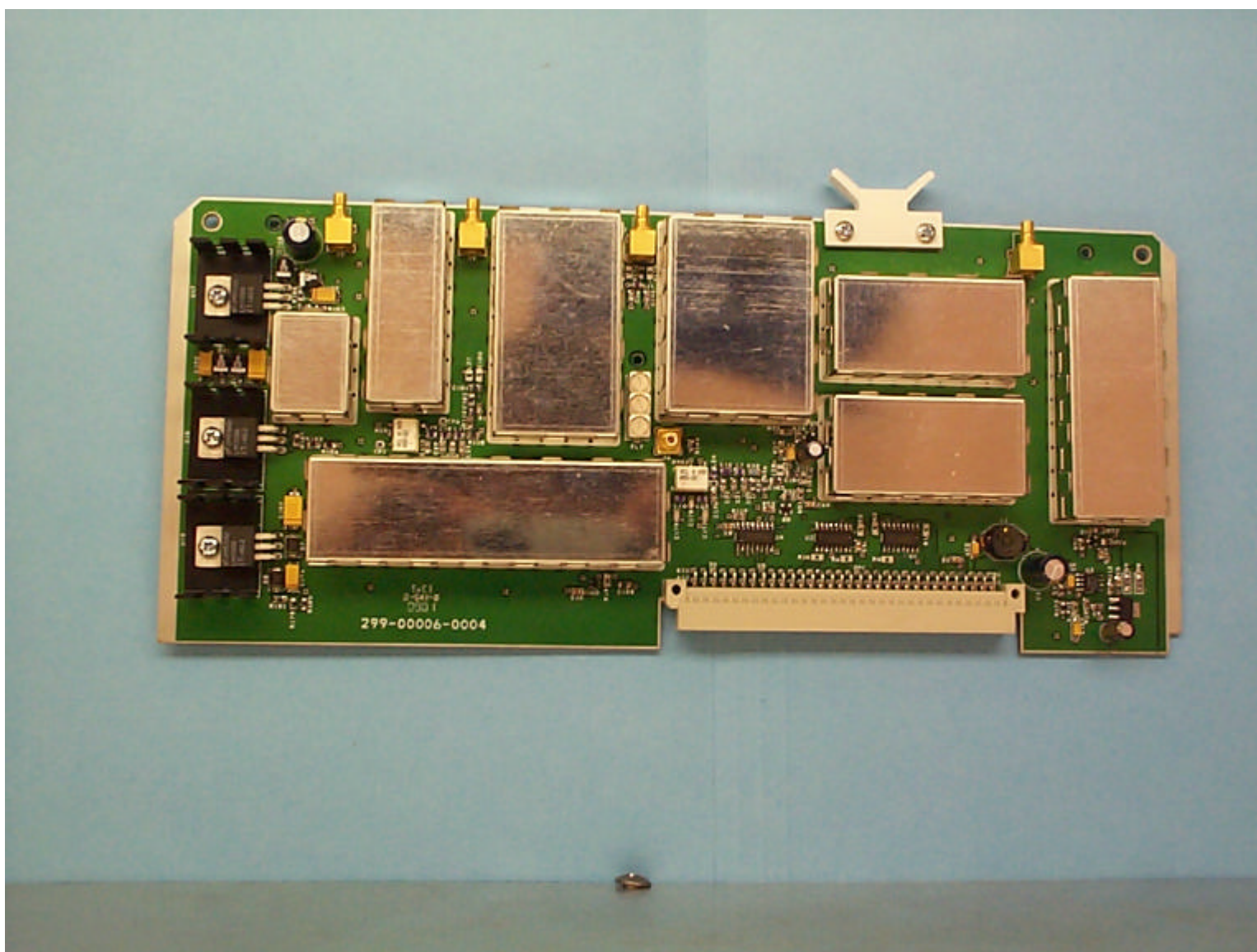
6 LOW-LEVEL RF – RECEIVER PCB – FRONT VIEW – SHIELDS REMOVED



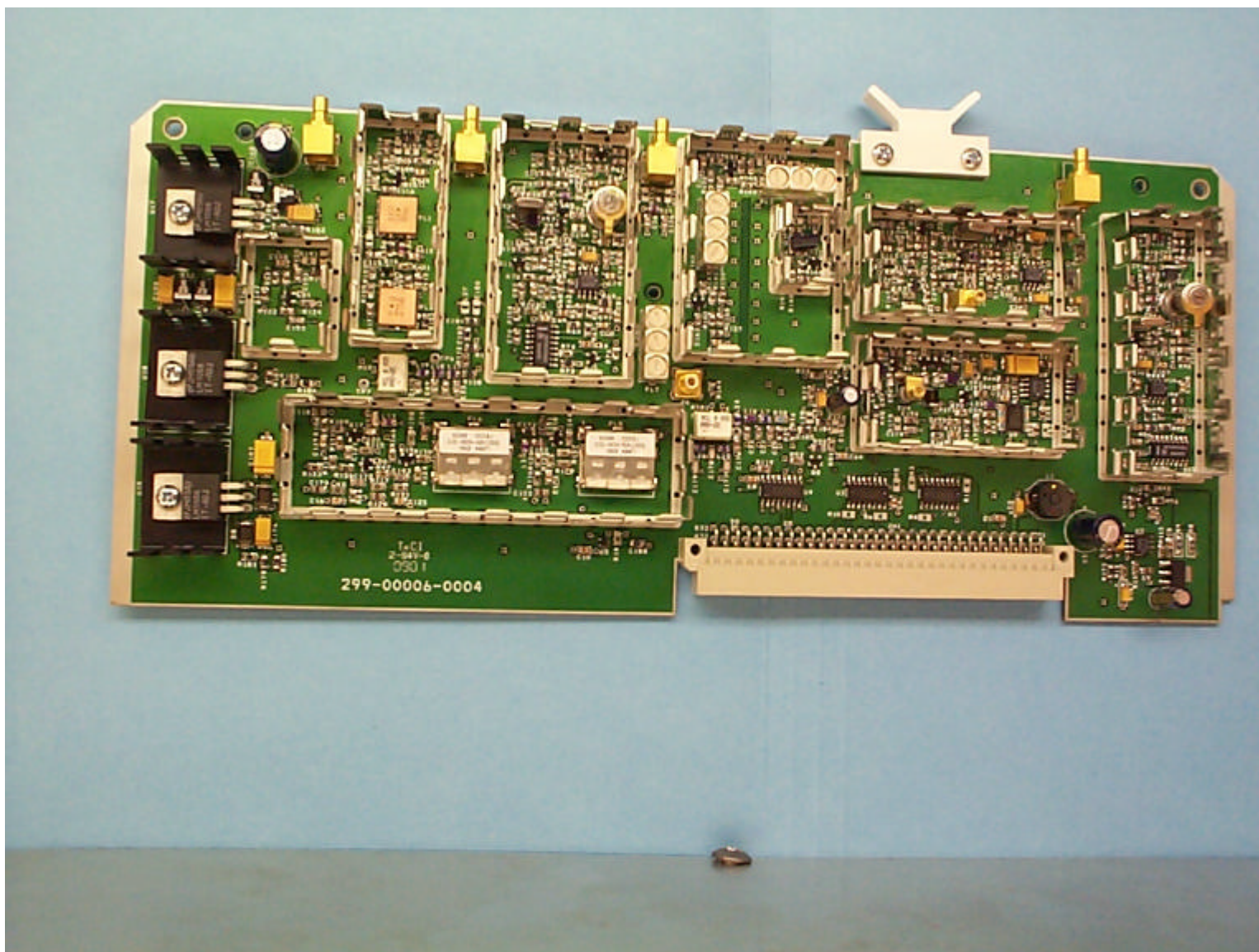
5 LOW-LEVEL RF – RECEIVER PCB – REAR VIEW



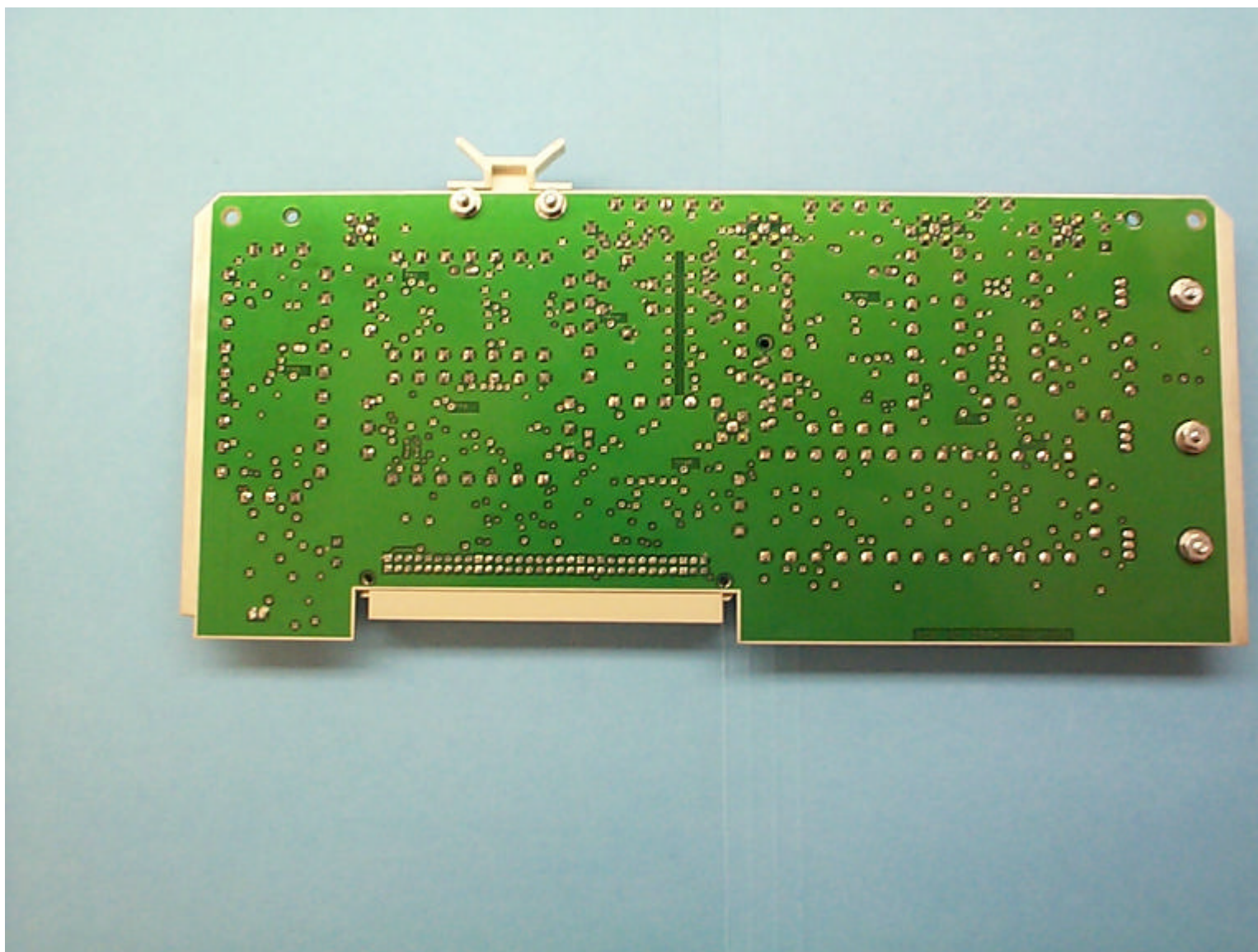
2 LOW-LEVEL RF – RECEIVER PCB – FRONT VIEW – SHIELD COVERS INSTALLED



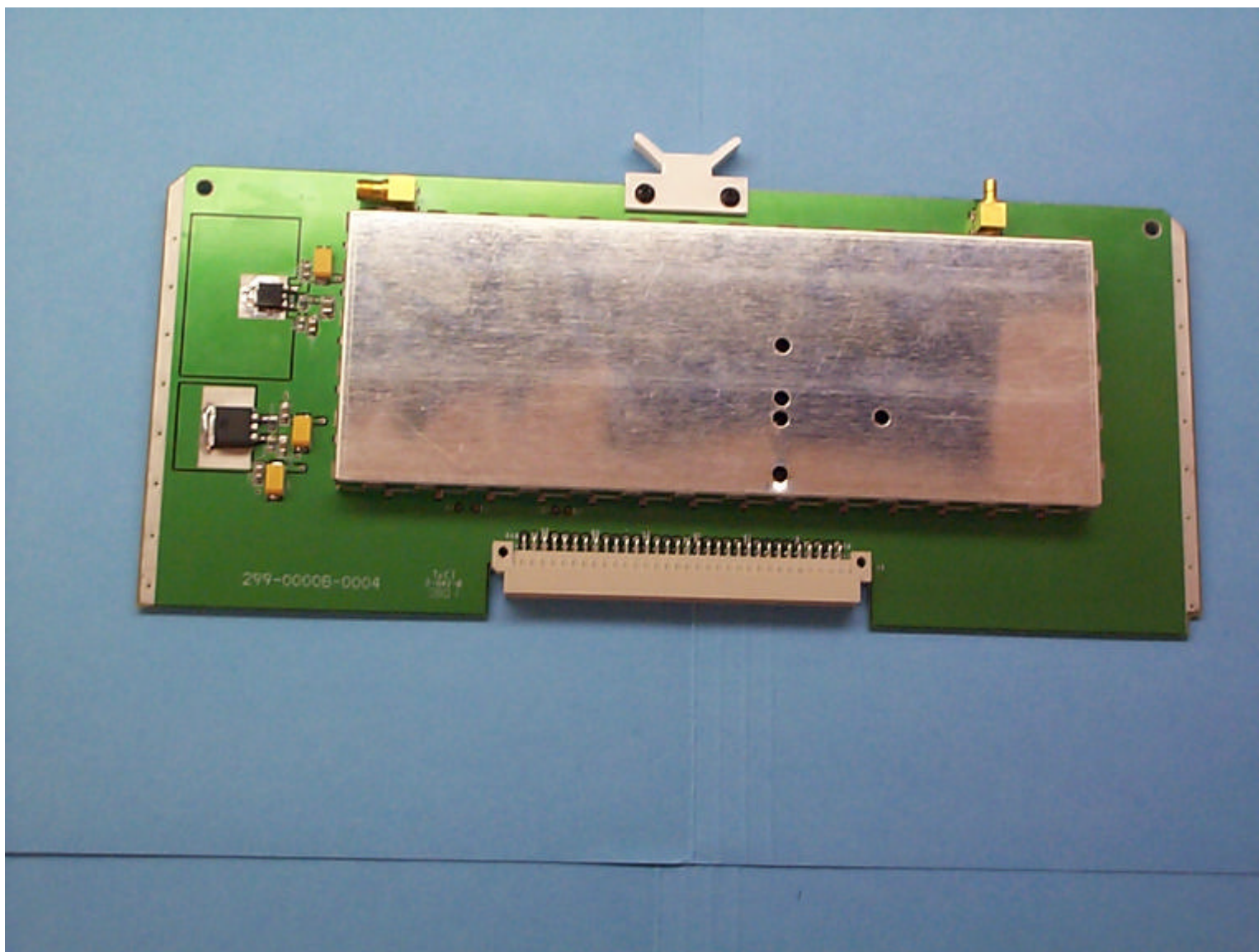
13 LOW-LEVEL RF – SYNTHESIZER PCB – FRONT VIEW – SHIELD COVERS INSTALLED



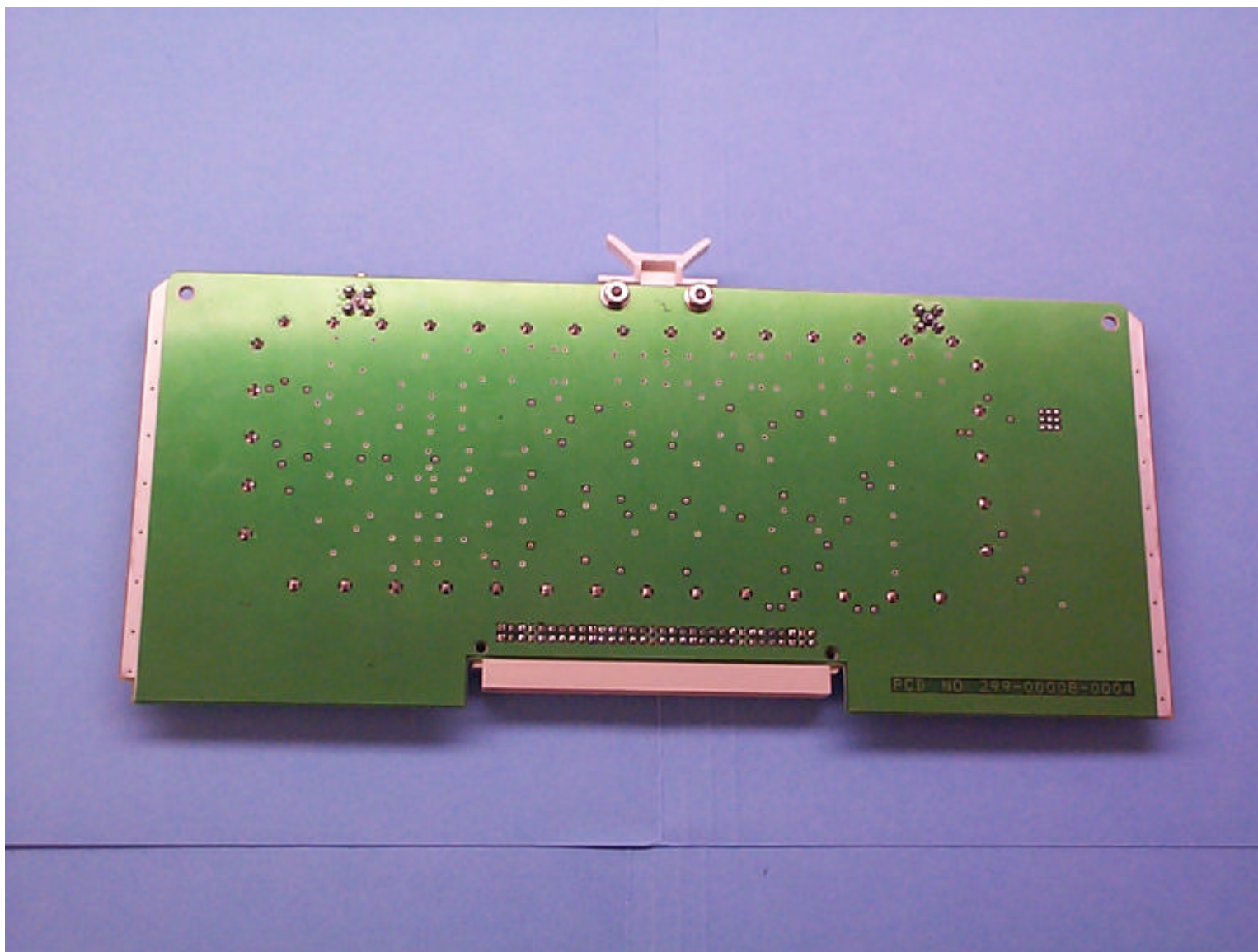
7 LOW-LEVEL RF – SYNTHESIZER PCB – FRONT VIEW – SHIELD COVERS REMOVED



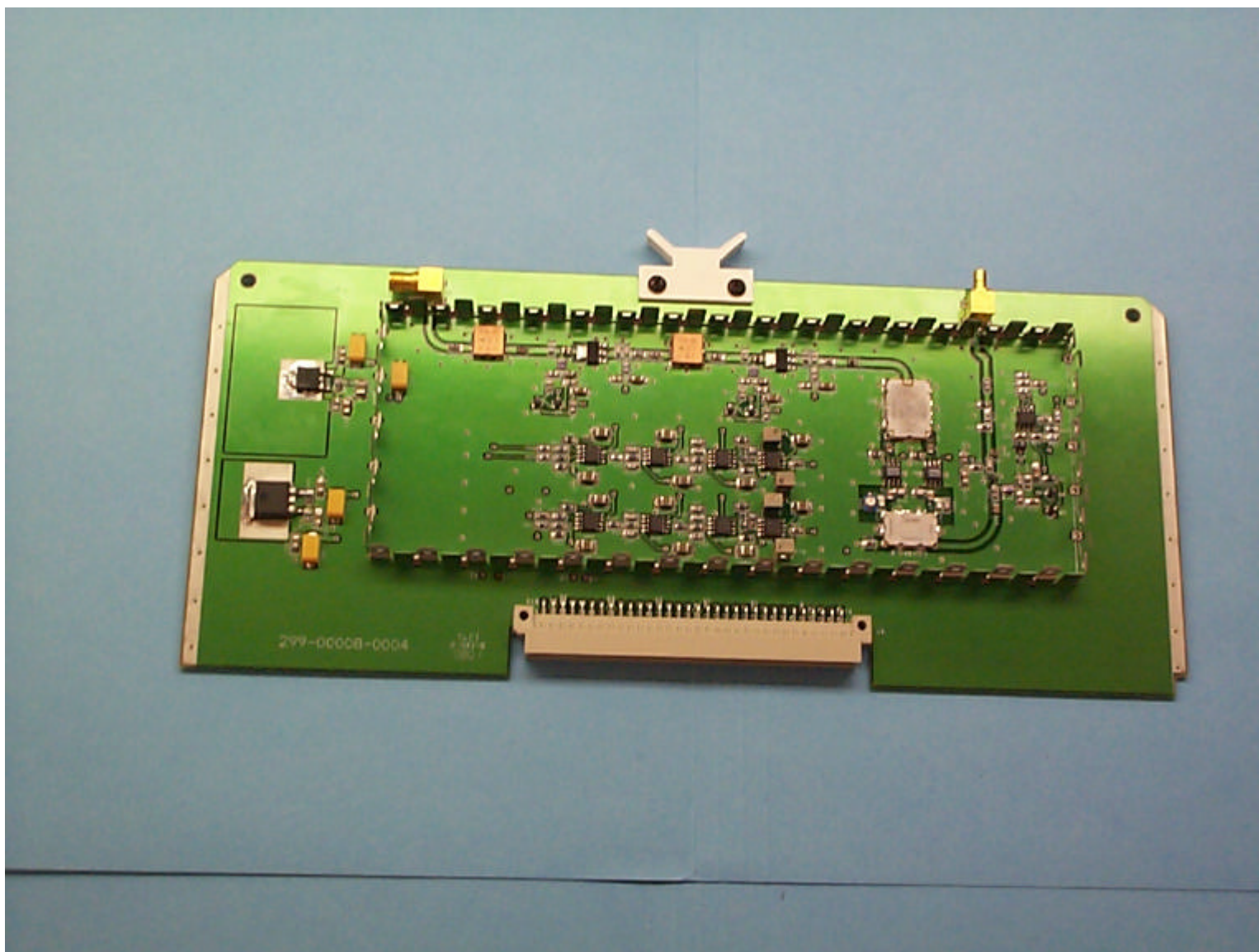
3 LOW-LEVEL RF – SYNTHESIZER PCB – REAR VIEW



1 LOW-LEVEL RF – EXCITER PCB – FRONT VIEW – SHIELD COVER INSTALLED



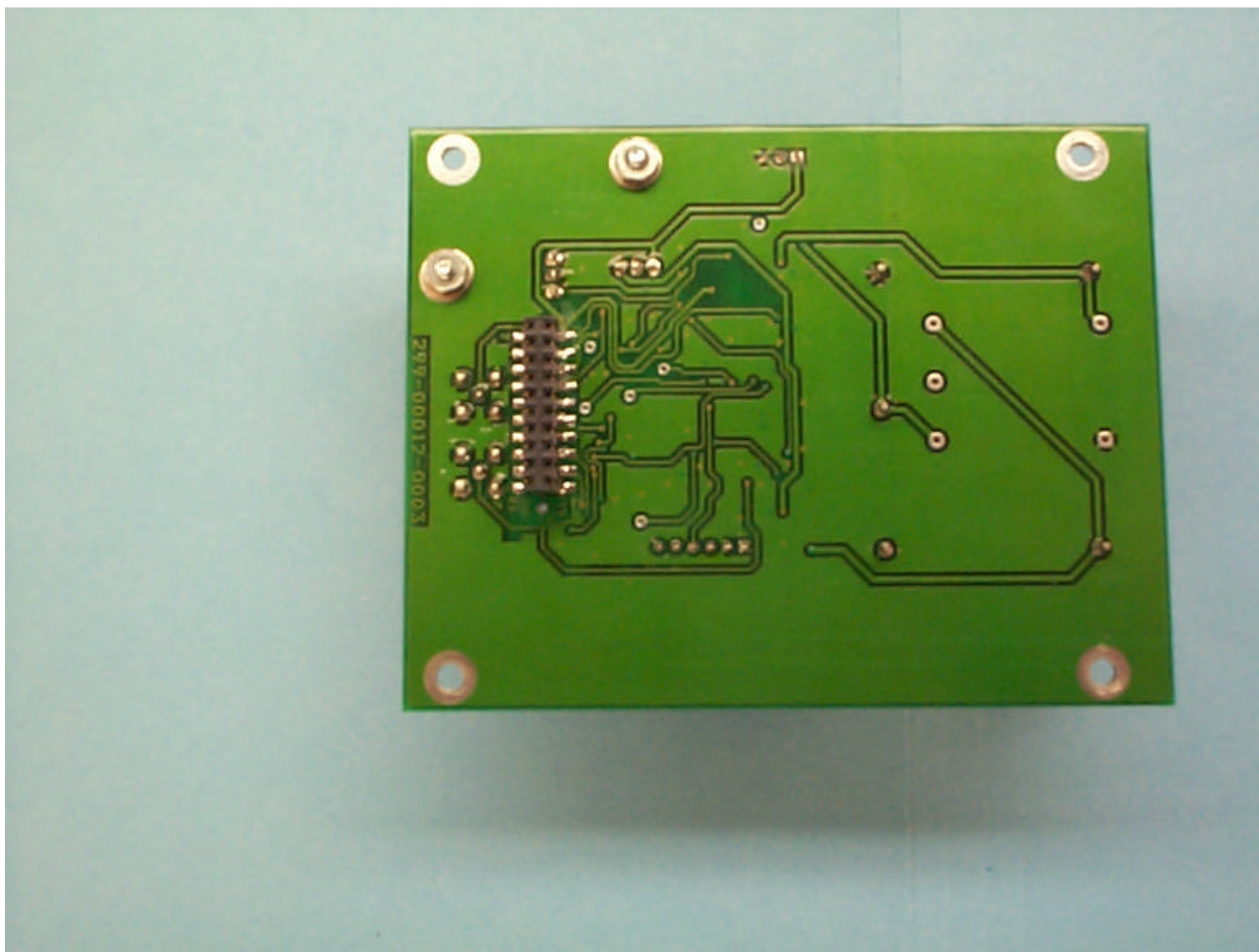
12 LOW-LEVEL RF – EXCITER PCB – REAR VIEW



10 LOW-LEVEL RF – EXCITER PCB – FRONT VIEW – SHIELD COVER REMOVED



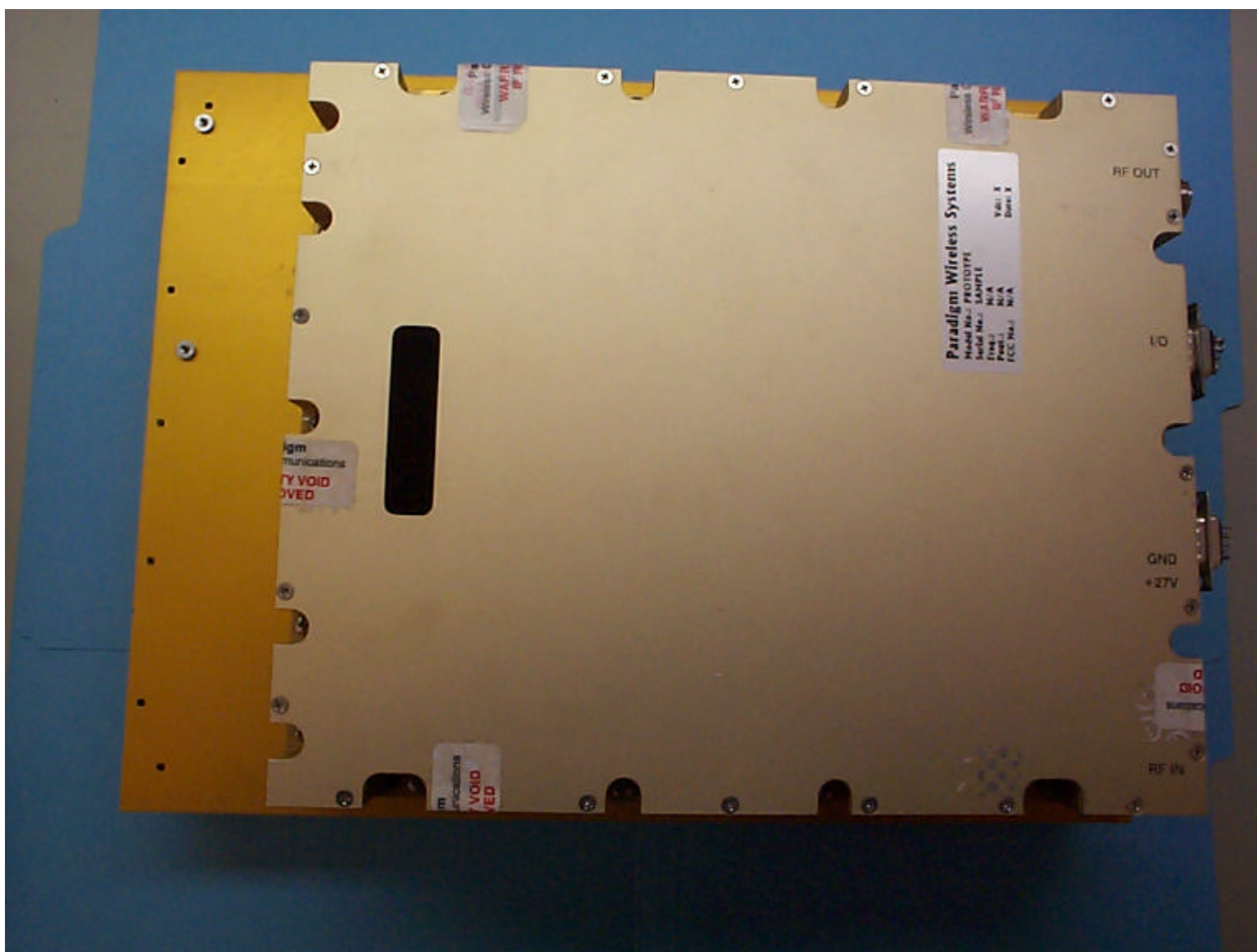
11 LOW-LEVEL RF – CLOCK REFERENCE PCB – FRONT VIEW



8 LOW-LEVEL RF – CLOCK REFERENCE PCB – REAR VIEW



9 PARADIGM AMPLIFIER MODULE – HEAT SINK SIDE



4 PARADIGM AMPLIFIER MODULE – INSIDE VIEW