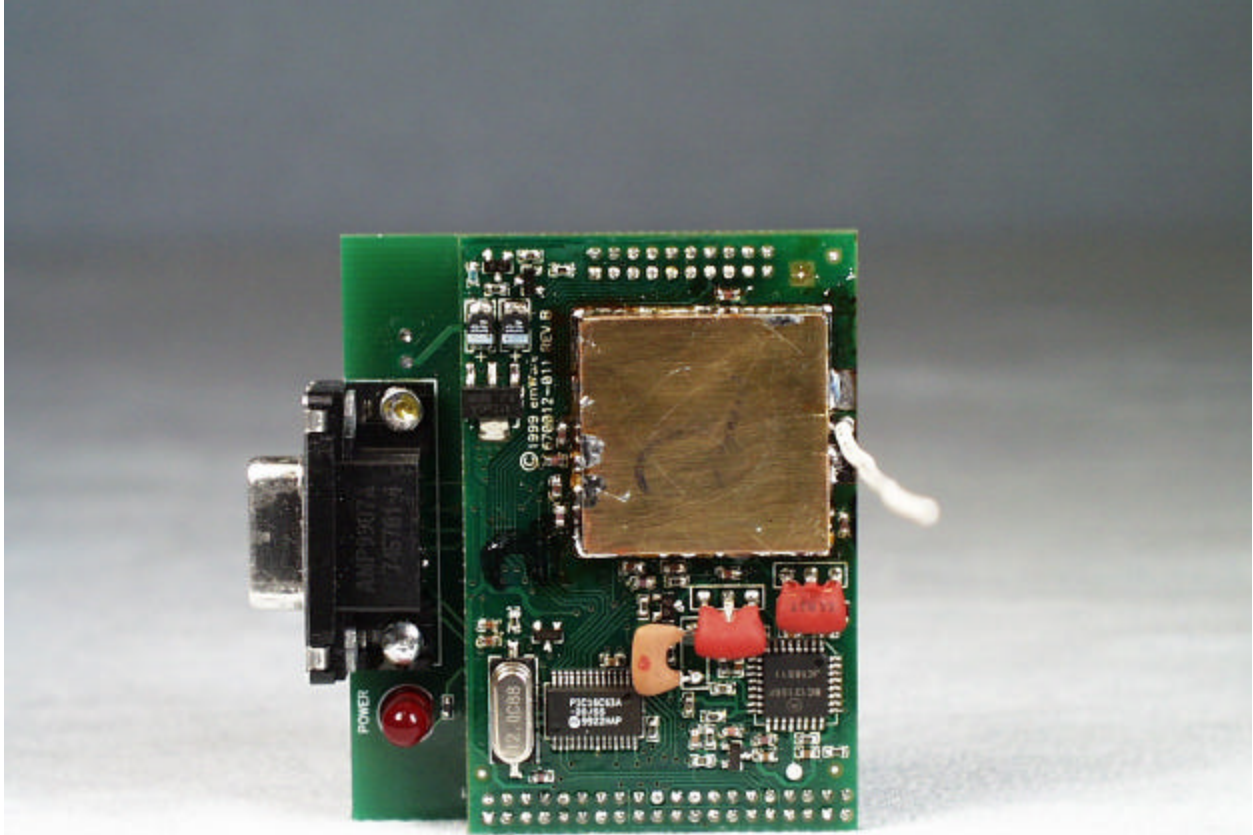
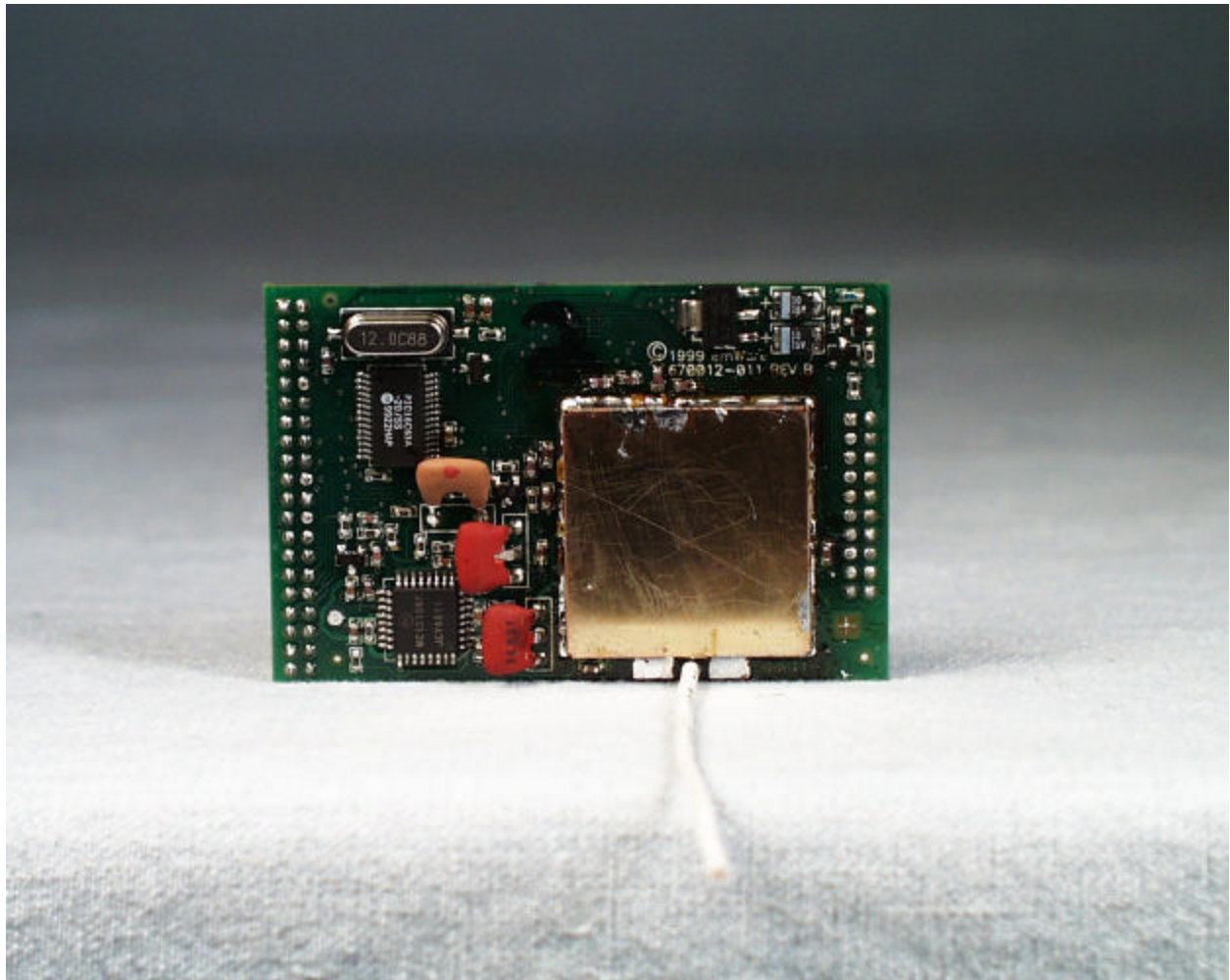


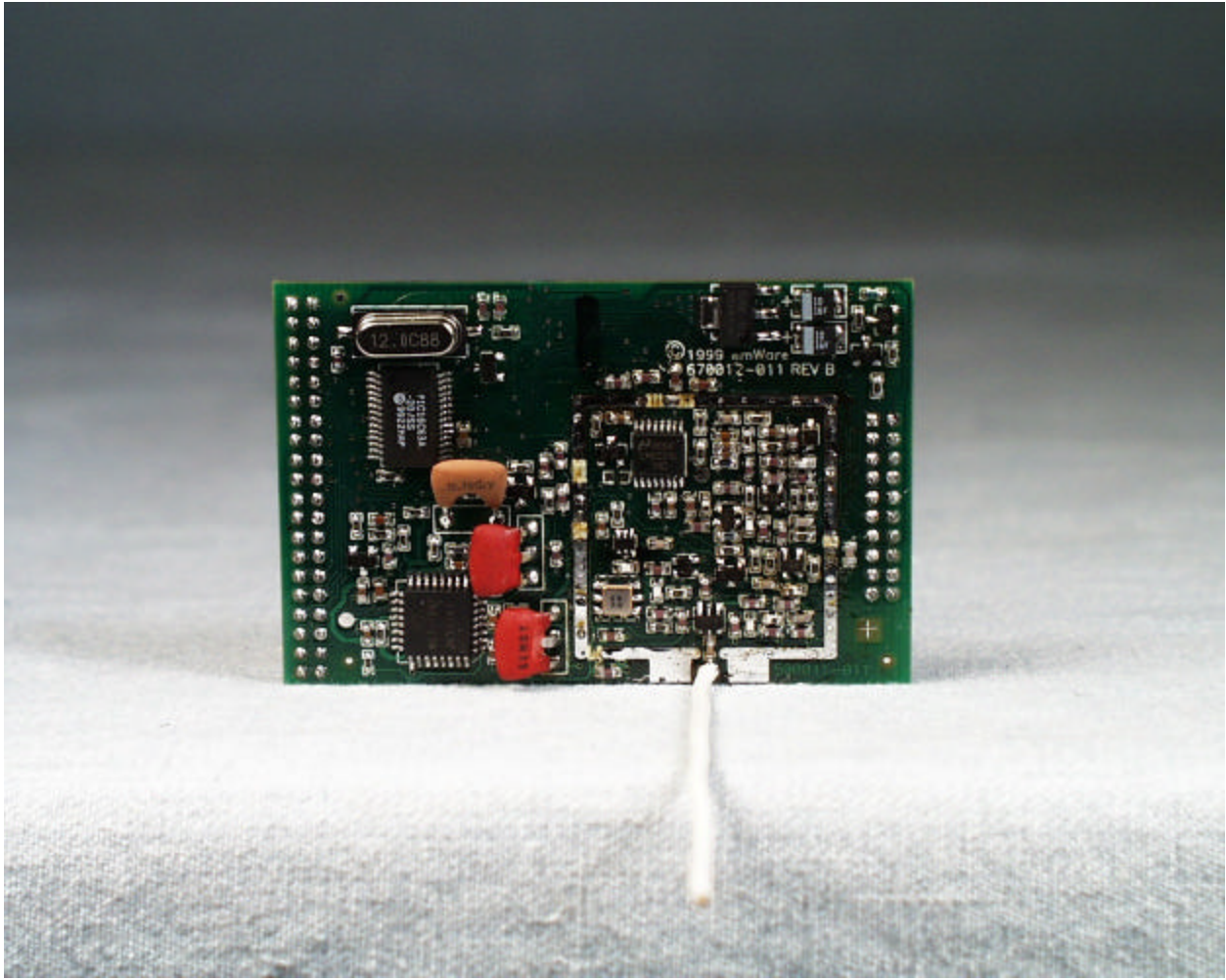
**Exhibit 9: Internal Photographs**



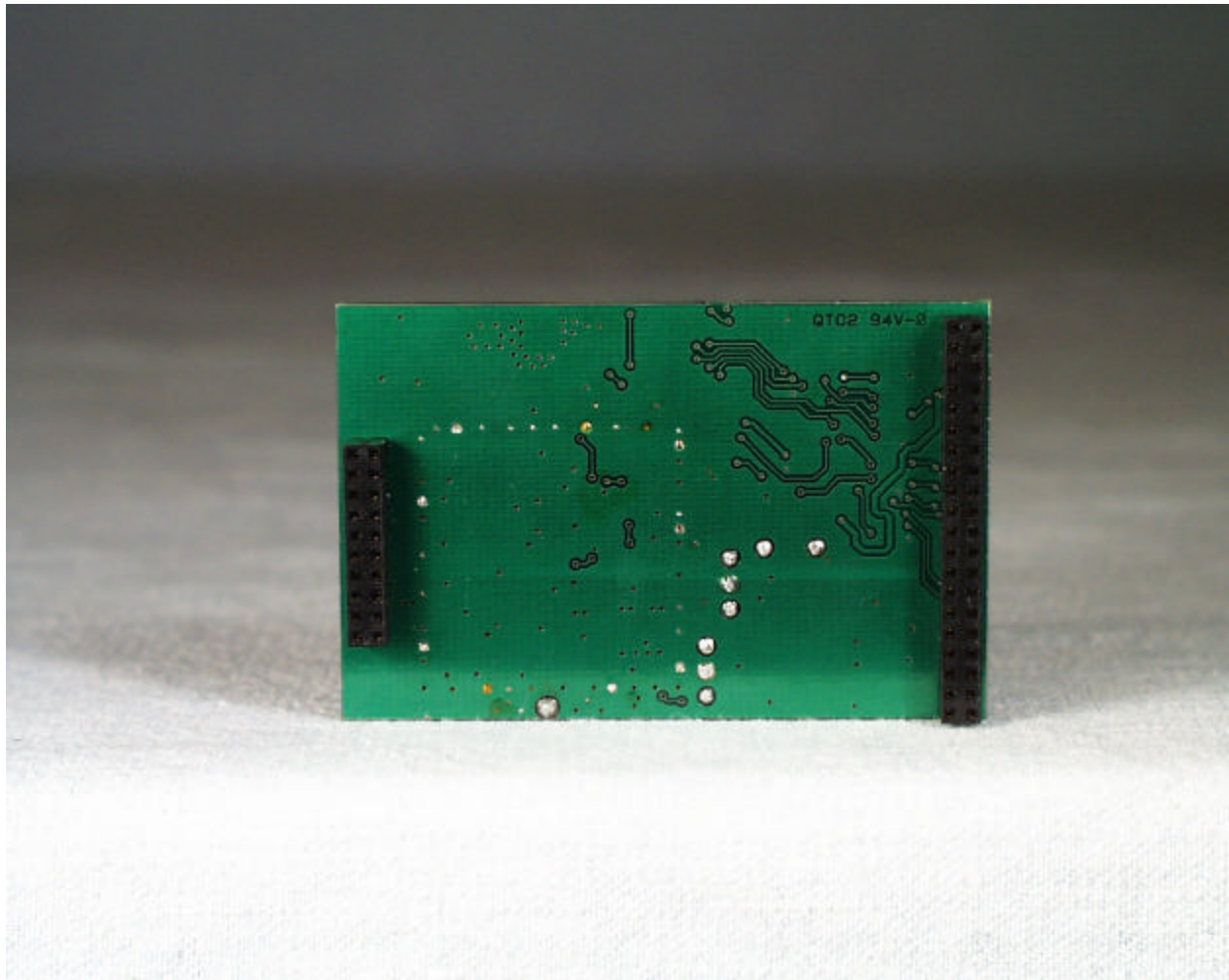
Front view of the EMRF900 with interface board



Front view of the EMRF900 with RF cans installed

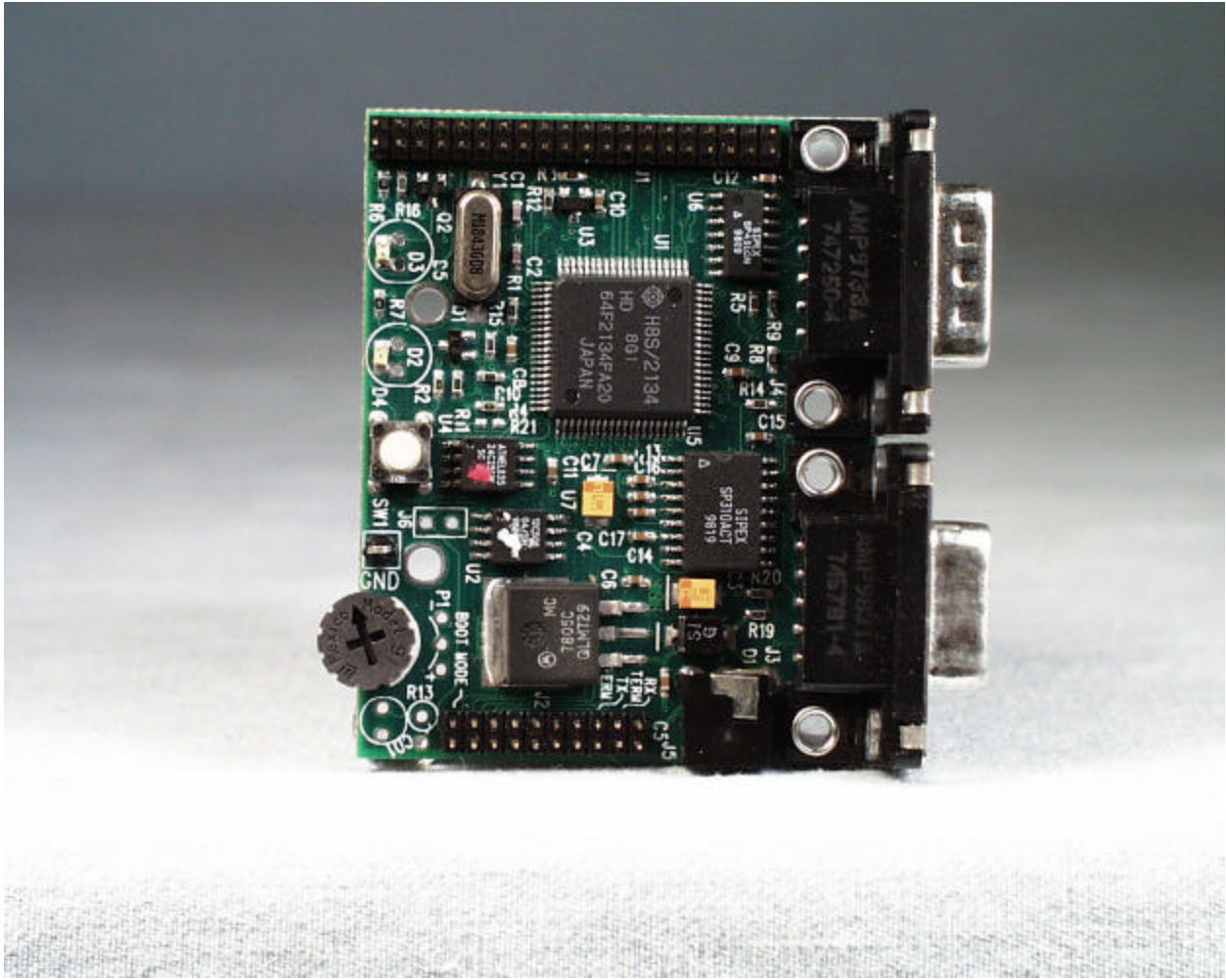


Front view of the EMRF900 with RF cans removed

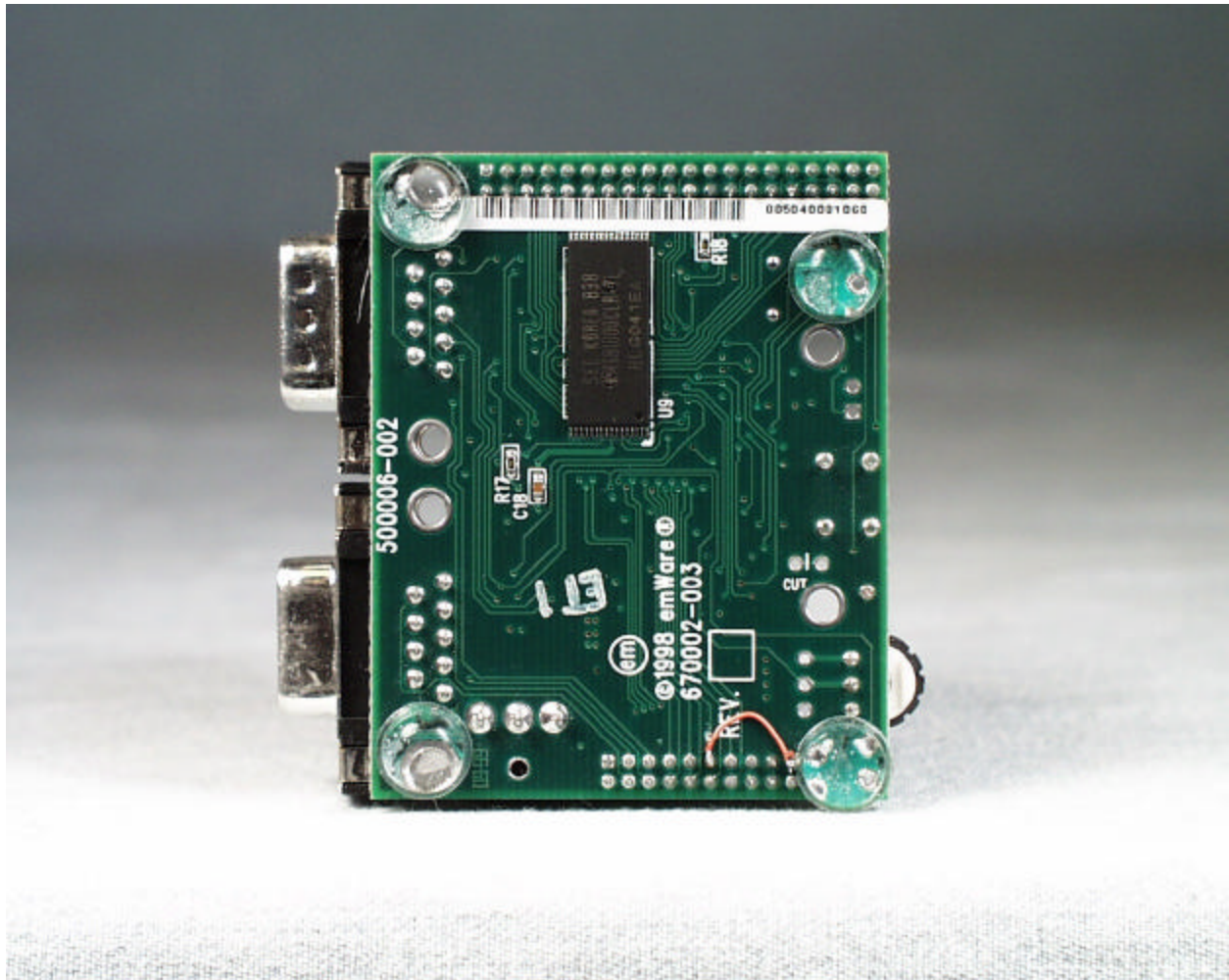


Back view of the EMRF900

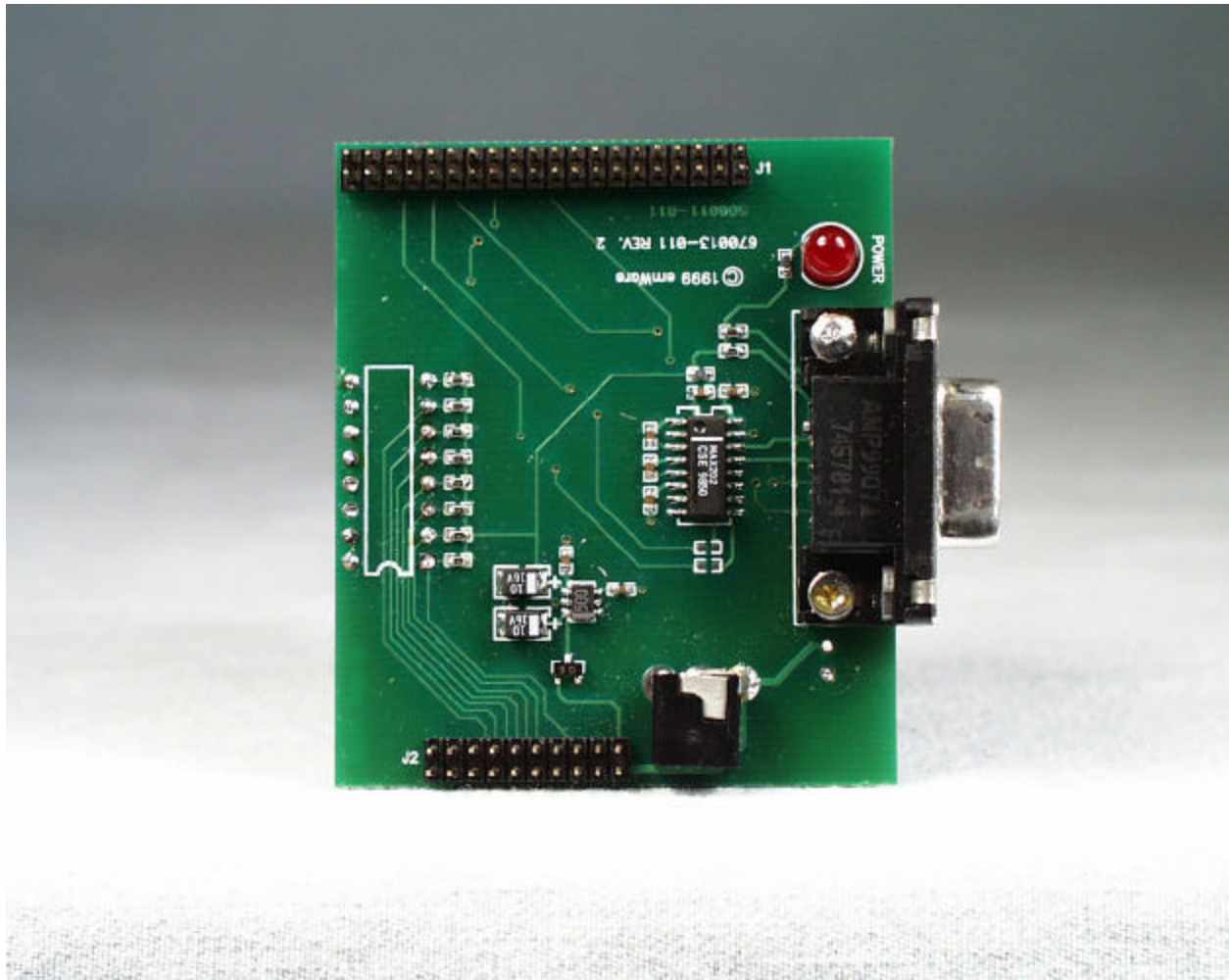




Front view of the interface board (SDK connector board)

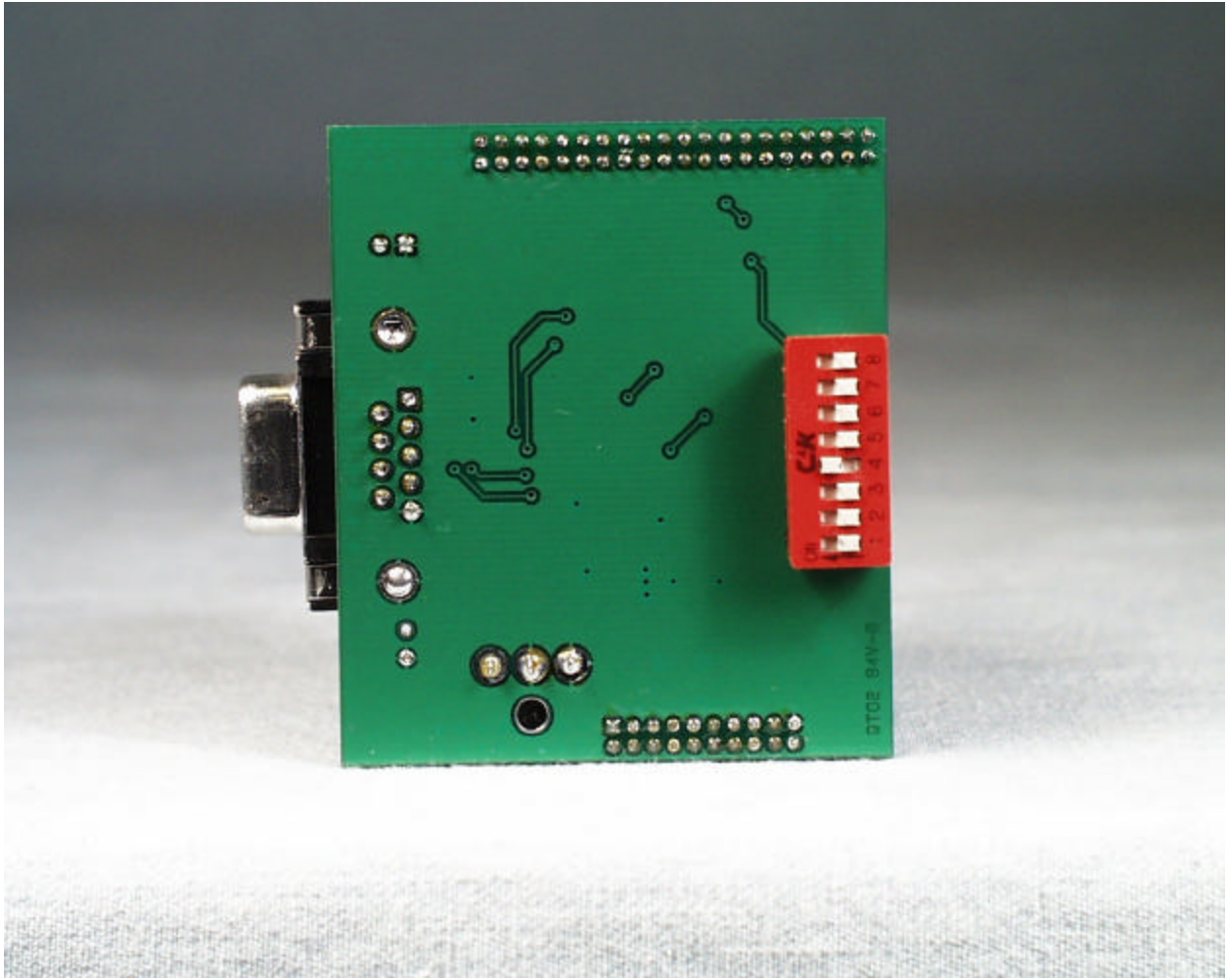


Back view of the interface board (SDK connector board)



Front view of the interface board (emWare connector board)





Back view of the interface board (emWare connector board)