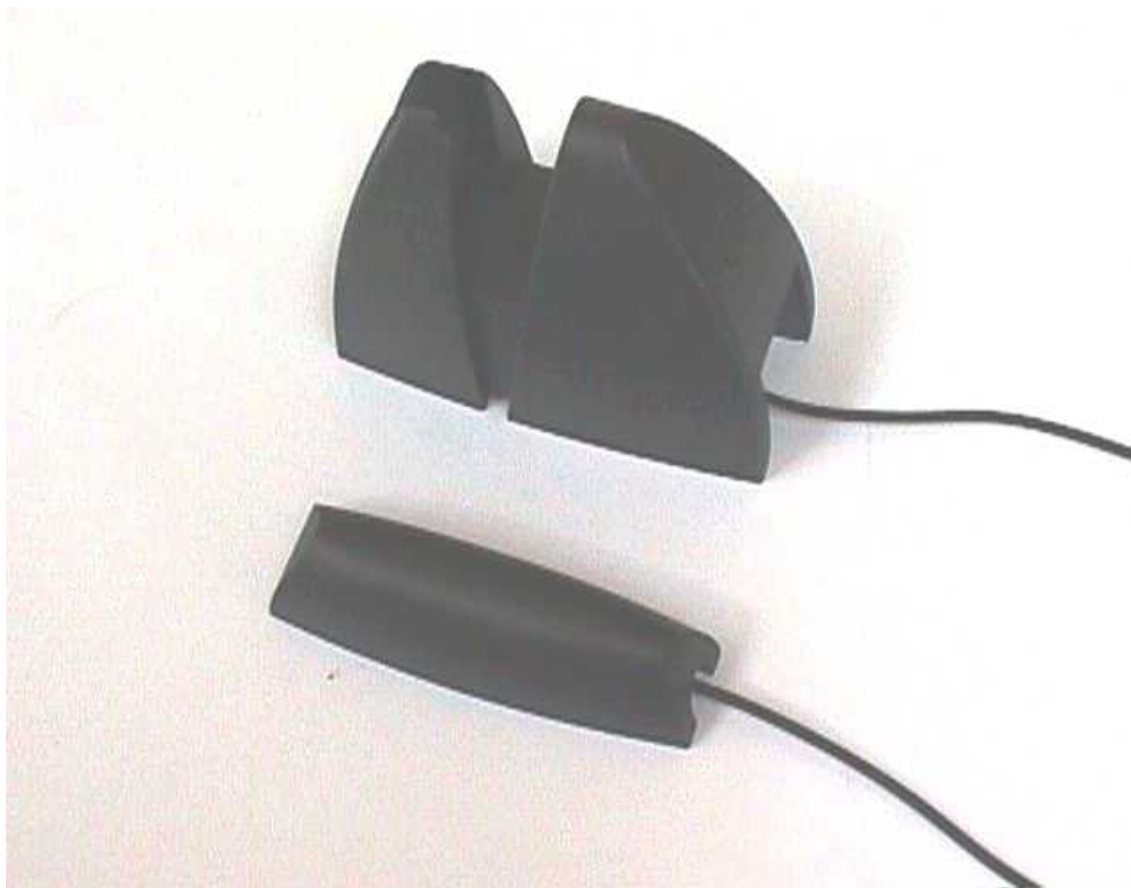
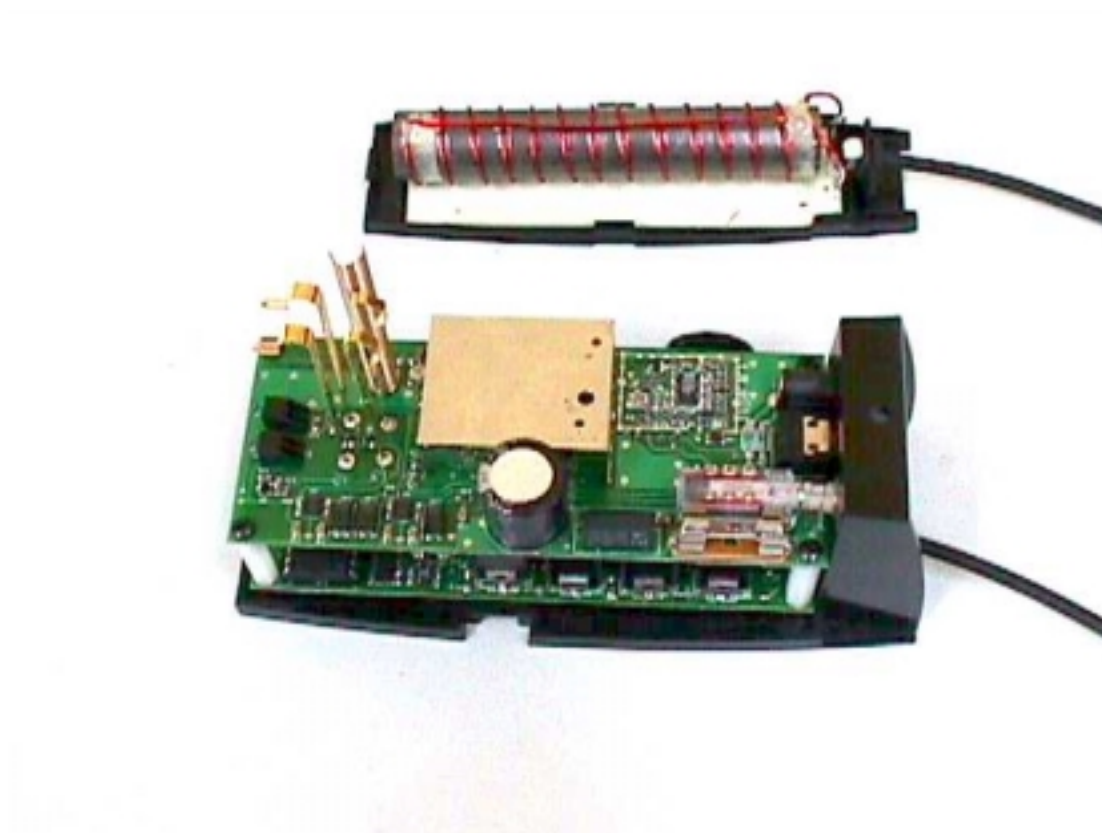


View of the Assembled Base Station Unit with Attached Magnetic Transmitter Antenna

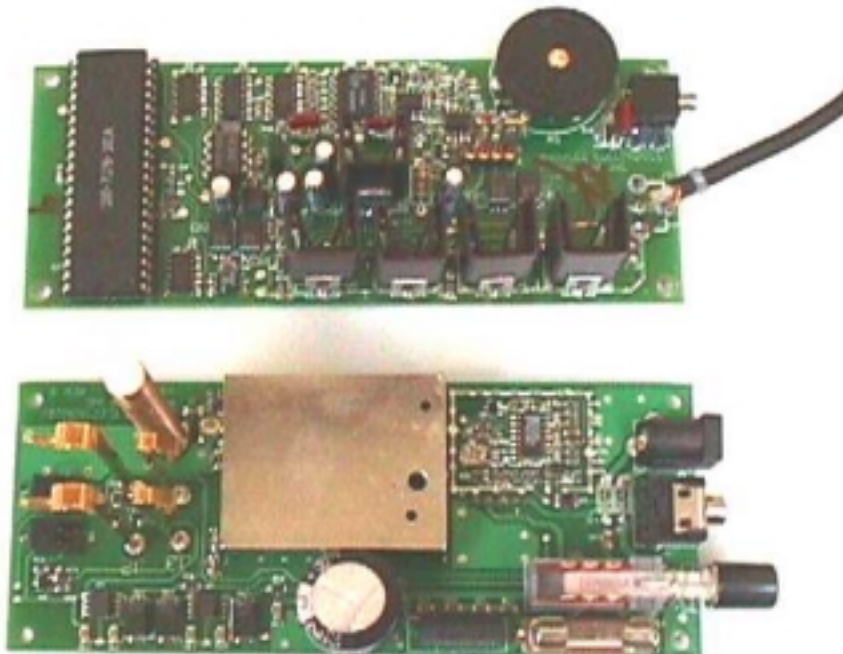
(All plastic parts are un-plated, and are not shown in the following photographs.)



**View of the Base Station with Top Cover Removed, Showing Assembled PC Boards,
With Receiver Board on Top, and Magnetic Transmitter Board on Bottom**



View of the Front Side of the PC Boards



View of the Back Side of the PC Boards

