

Appendix C – Highest Test Plots

Test Date : 2024-02-28 | Ambient Temp : 22.8 °C | Tissue Temp : 22.2 °C

Test Mode

1_WCDMA Band II_RMC12.2K_Top Side_0mm_Ch9262_Ant Main_Sample 1_INPAQ

Device Under Test Properties

Manufacturer or Brand	Model No. or Code Name	Sample No. or IMEI	DUT Type
ASUS	CR1204FG	A001	Convertible PC

Exposure Conditions

Phantom Section	Band	Group, UID	Frequency [MHz], Channel Number	Conversion Factor	TSL Conductivity [S/m]	TSL Permittivity
Flat	Band 2	WCDMA, 10011 - CAC	1852.400, 9262	7.7	1.37	41.5

Hardware Setup

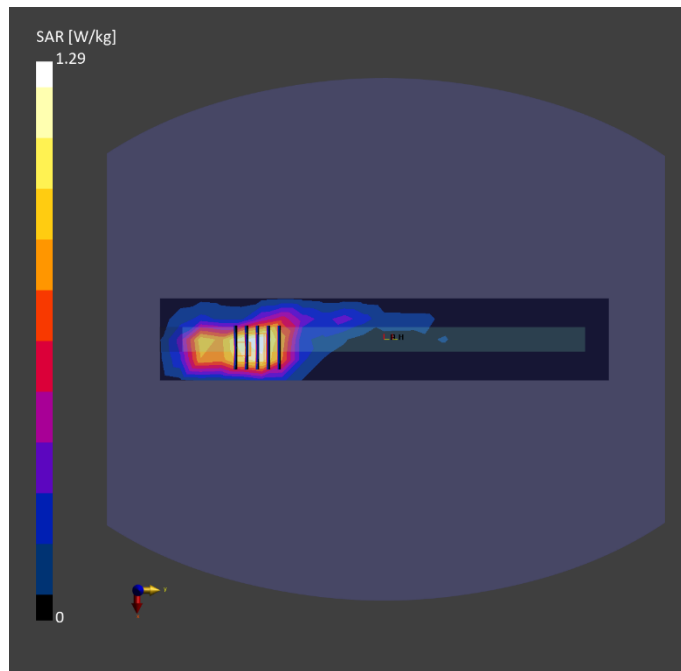
Phantom	Tissue Simulating Liquid	Probe Calibration Date	DAE Calibration Date
ELI V8.0 (20deg probe tilt) - 2179	HBBL-600-10000	EX3DV4 - SN7650 / 2023-05-22	DAE4 Sn1741 / 2023-08-23

Scan Setup

	Area Scan	Zoom Scan
Grid Extents [mm]	60.0 x 330.0	32.0 x 32.0 x 30.0
Grid Steps [mm]	15.0 x 15.0	8.0 x 8.0 x 5.0
Sensor Surface [mm]	3.0	1.4
Graded Grid	N/A	Yes
Grading Ratio	N/A	1.4

Measurement Results

	Area Scan	Zoom Scan
psSAR-1g [W/kg]	0.685	0.865
psSAR-10g [W/kg]	0.399	0.442
Power Drift [dB]		0.03
TSL Correction	Positive only	Positive only
M2 / M1 [%]		47.3
Dist 3dB Peak [mm]		7.2



Test Date : 2024-02-23 | Ambient Temp : 22.8 °C | Tissue Temp : 22.2 °C

Test Mode

2_WCDMA Band IV_RMC12.2K_Top Side_0mm_Ch1312_Ant Main_Sample 1_INPAQ

Device Under Test Properties

Manufacturer or Brand	Model No. or Code Name	Sample No. or IMEI	DUT Type
ASUS	CR1204FG	A003	Convertible PC

Exposure Conditions

Phantom Section	Band	Group, UID	Frequency [MHz], Channel Number	Conversion Factor	TSL Conductivity [S/m]	TSL Permittivity
Flat	Band 4	WCDMA, 10011 - CAC	1712.400, 1312	8.03	1.31	41.3

Hardware Setup

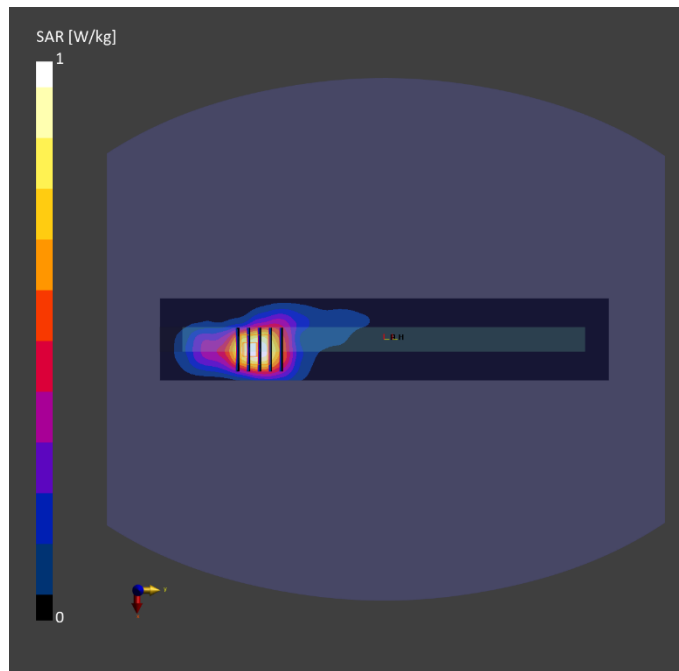
Phantom	Tissue Simulating Liquid	Probe Calibration Date	DAE Calibration Date
ELI V8.0 (20deg probe tilt) - 2179	HBBL-600-10000	EX3DV4 - SN7650 / 2023-05-22	DAE4 Sn1741 / 2023-08-23

Scan Setup

	Area Scan	Zoom Scan
Grid Extents [mm]	60.0 x 330.0	32.0 x 32.0 x 30.0
Grid Steps [mm]	15.0 x 15.0	8.0 x 8.0 x 5.0
Sensor Surface [mm]	3.0	1.4
Graded Grid	N/A	Yes
Grading Ratio	N/A	1.4

Measurement Results

	Area Scan	Zoom Scan
psSAR-1g [W/kg]	0.567	0.747
psSAR-10g [W/kg]	0.331	0.404
Power Drift [dB]		-0.01
TSL Correction	Positive only	Positive only
M2 / M1 [%]		53.0
Dist 3dB Peak [mm]		9.8



Test Date : 2024-02-24 | Ambient Temp : 22.4 °C | Tissue Temp : 22.2 °C

Test Mode

3_WCDMA Band V_RMC12.2K_Top Side_0mm_Ch4233_Ant Main_Sample 1_INPAQ

Device Under Test Properties

Manufacturer or Brand	Model No. or Code Name	Sample No. or IMEI	DUT Type
ASUS	CR1204FG	S1NTLP00330018	Convertible PC

Exposure Conditions

Phantom Section	Band	Group, UID	Frequency [MHz], Channel Number	Conversion Factor	TSL Conductivity [S/m]	TSL Permittivity
Flat	Band 5	WCDMA, 10011 - CAC	846.600, 4233	9.12	0.918	44.2

Hardware Setup

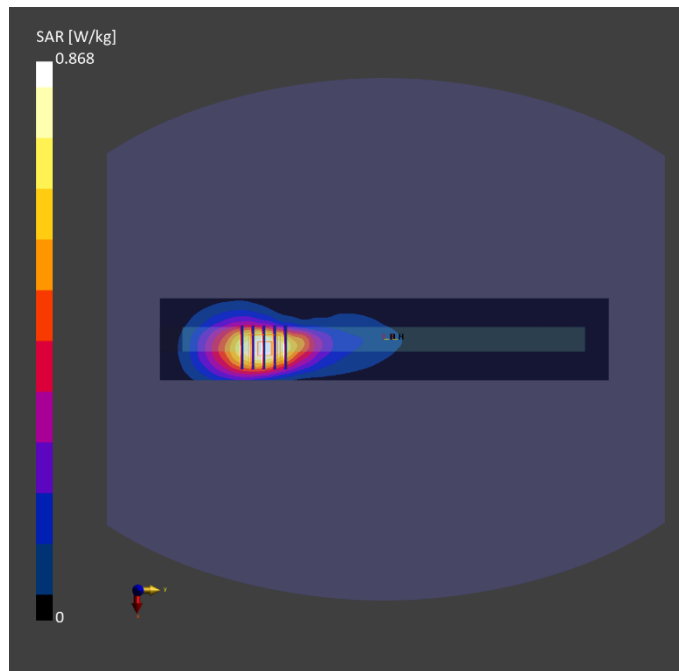
Phantom	Tissue Simulating Liquid	Probe Calibration Date	DAE Calibration Date
ELI V8.0 (20deg probe tilt) - 2179	HBBL-600-10000	EX3DV4 - SN7650 / 2023-05-22	DAE4 Sn1741 / 2023-08-23

Scan Setup

	Area Scan	Zoom Scan
Grid Extents [mm]	60.0 x 330.0	32.0 x 32.0 x 30.0
Grid Steps [mm]	15.0 x 15.0	8.0 x 8.0 x 5.0
Sensor Surface [mm]	3.0	1.4
Graded Grid	N/A	Yes
Grading Ratio	N/A	1.4

Measurement Results

	Area Scan	Zoom Scan
psSAR-1g [W/kg]	0.845	0.984
psSAR-10g [W/kg]	0.548	0.559
Power Drift [dB]		0.03
TSL Correction	Positive only	Positive only
M2 / M1 [%]		53.8
Dist 3dB Peak [mm]		9.6



Test Date : 2024-02-25 | Ambient Temp : 22.6 °C | Tissue Temp : 22.3 °C

Test Mode

4_LTE Band 7_QPSK20M_Top Side_0mm_Ch21100_1RB_Offset0_Ant Main_Sample 1_INPAQ

Device Under Test Properties

Manufacturer or Brand	Model No. or Code Name	Sample No. or IMEI	DUT Type
ASUS	CR1204FG	A008	Convertible PC

Exposure Conditions

Phantom Section	Band	Group, UID	Frequency [MHz], Channel Number	Conversion Factor	TSL Conductivity [S/m]	TSL Permittivity
Flat	Band 7	LTE-FDD, 10169 - CAF	2535.000, 21100	7.17	1.86	39.5

Hardware Setup

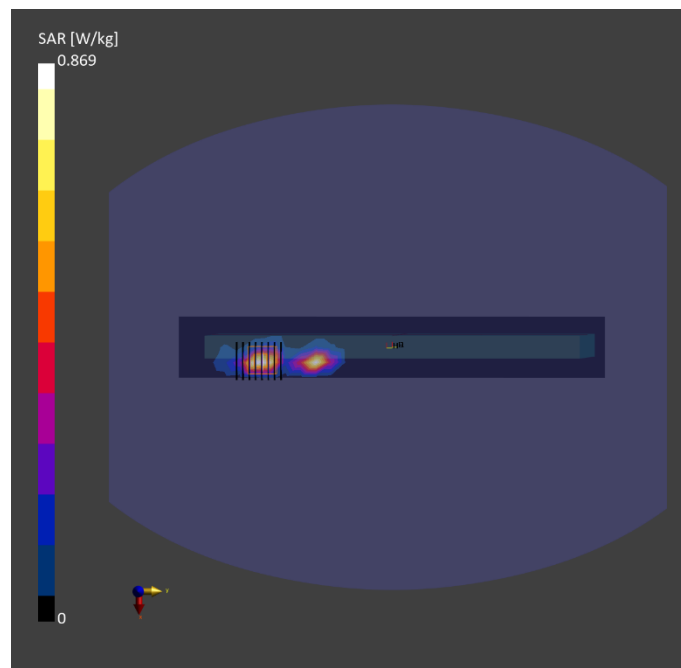
Phantom	Tissue Simulating Liquid	Probe Calibration Date	DAE Calibration Date
ELI V8.0 (20deg probe tilt) - 2179	HBBL-600-10000	EX3DV4 - SN7650 / 2023-05-22	DAE4 Sn1741 / 2023-08-23

Scan Setup

	Area Scan	Zoom Scan
Grid Extents [mm]	48.0 x 336.0	30.0 x 30.0 x 30.0
Grid Steps [mm]	12.0 x 12.0	5.0 x 5.0 x 5.0
Sensor Surface [mm]	3.0	1.4
Graded Grid	N/A	Yes
Grading Ratio	N/A	1.4

Measurement Results

	Area Scan	Zoom Scan
psSAR-1g [W/kg]	0.670	0.628
psSAR-10g [W/kg]	0.270	0.230
Power Drift [dB]		0.01
TSL Correction	Positive only	Positive only
M2 / M1 [%]		46.5
Dist 3dB Peak [mm]		6.0



Test Date : 2024-02-27 | Ambient Temp : 22.5 °C | Tissue Temp : 22.3 °C

Test Mode

5_LTE Band 12_QPSK10M_Top Side_0mm_Ch23095_1RB_Offset0_Ant Main_Sample 1_INPAQ

Device Under Test Properties

Manufacturer or Brand	Model No. or Code Name	Sample No. or IMEI	DUT Type
ASUS	CR1204FG	A008	Convertible PC

Exposure Conditions

Phantom Section	Band	Group, UID	Frequency [MHz], Channel Number	Conversion Factor	TSL Conductivity [S/m]	TSL Permittivity
Flat	Band 12	LTE-FDD, 10175 - CAH	707.500, 23095	10.42	0.893	43.7

Hardware Setup

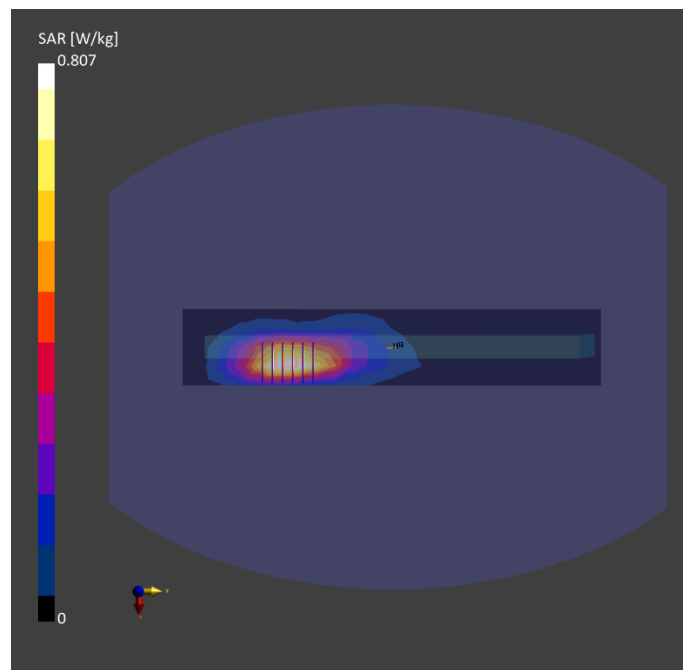
Phantom	Tissue Simulating Liquid	Probe Calibration Date	DAE Calibration Date
ELI V8.0 (20deg probe tilt) - 2179	HBBL-600-10000	EX3DV4 - SN7650 / 2023-05-22	DAE4 Sn1741 / 2023-08-23

Scan Setup

	Area Scan	Zoom Scan
Grid Extents [mm]	60.0 x 330.0	32.0 x 32.0 x 30.0
Grid Steps [mm]	15.0 x 15.0	8.0 x 8.0 x 5.0
Sensor Surface [mm]	3.0	1.4
Graded Grid	N/A	Yes
Grading Ratio	N/A	1.4

Measurement Results

	Area Scan	Zoom Scan
psSAR-1g [W/kg]	0.740	0.836
psSAR-10g [W/kg]	0.478	0.474
Power Drift [dB]		-0.01
TSL Correction	Positive only	Positive only
M2 / M1 [%]		51.6
Dist 3dB Peak [mm]		9.6



Test Date : 2024-02-27 | Ambient Temp : 22.5 °C | Tissue Temp : 22.3 °C

Test Mode

6_LTE Band 13_QPSK10M_Top Side_0mm_Ch23230_1RB_Offset0_Ant Main_Sample 1_INPAQ

Device Under Test Properties

Manufacturer or Brand	Model No. or Code Name	Sample No. or IMEI	DUT Type
ASUS	CR1204FG	A008	Convertible PC

Exposure Conditions

Phantom Section	Band	Group, UID	Frequency [MHz], Channel Number	Conversion Factor	TSL Conductivity [S/m]	TSL Permittivity
Flat	Band 13	LTE-FDD, 10175 - CAH	782.000, 23230	10.42	0.922	43.4

Hardware Setup

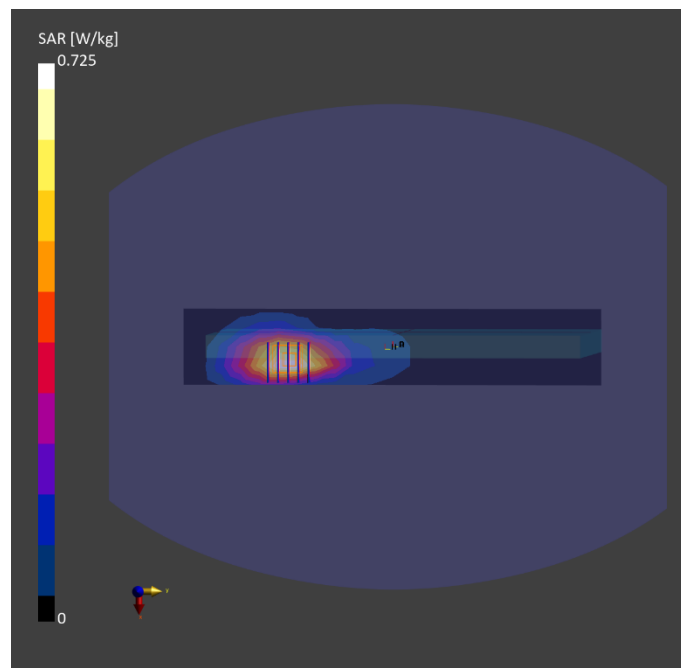
Phantom	Tissue Simulating Liquid	Probe Calibration Date	DAE Calibration Date
ELI V8.0 (20deg probe tilt) - 2179	HBBL-600-10000	EX3DV4 - SN7650 / 2023-05-22	DAE4 Sn1741 / 2023-08-23

Scan Setup

	Area Scan	Zoom Scan
Grid Extents [mm]	60.0 x 330.0	32.0 x 32.0 x 30.0
Grid Steps [mm]	15.0 x 15.0	8.0 x 8.0 x 5.0
Sensor Surface [mm]	3.0	1.4
Graded Grid	N/A	Yes
Grading Ratio	N/A	1.4

Measurement Results

	Area Scan	Zoom Scan
psSAR-1g [W/kg]	0.667	0.736
psSAR-10g [W/kg]	0.435	0.427
Power Drift [dB]		0.01
TSL Correction	Positive only	Positive only
M2 / M1 [%]		52.8
Dist 3dB Peak [mm]		9.8



Test Date : 2024-02-29 | Ambient Temp : 22.4 °C | Tissue Temp : 22.1 °C

Test Mode

7_LTE Band 14_QPSK10M_Top Side_0mm_Ch23330_1RB_Offset0_Ant Main_Sample 1_INPAQ

Device Under Test Properties

Manufacturer or Brand	Model No. or Code Name	Sample No. or IMEI	DUT Type
ASUS	CR1204FG	A008	Convertible PC

Exposure Conditions

Phantom Section	Band	Group, UID	Frequency [MHz], Channel Number	Conversion Factor	TSL Conductivity [S/m]	TSL Permittivity
Flat	Band 14	LTE-FDD, 10175 - CAH	793.000, 23330	10.42	0.887	42.3

Hardware Setup

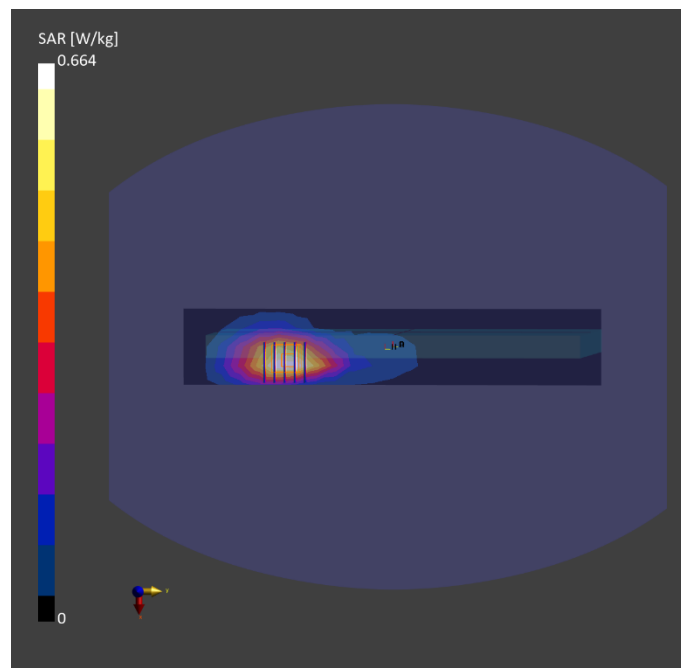
Phantom	Tissue Simulating Liquid	Probe Calibration Date	DAE Calibration Date
ELI V8.0 (20deg probe tilt) - 2179	HBBL-600-10000	EX3DV4 - SN7650 / 2023-05-22	DAE4 Sn1741 / 2023-08-23

Scan Setup

	Area Scan	Zoom Scan
Grid Extents [mm]	60.0 x 330.0	32.0 x 32.0 x 30.0
Grid Steps [mm]	15.0 x 15.0	8.0 x 8.0 x 5.0
Sensor Surface [mm]	3.0	1.4
Graded Grid	N/A	Yes
Grading Ratio	N/A	1.4

Measurement Results

	Area Scan	Zoom Scan
psSAR-1g [W/kg]	0.611	0.669
psSAR-10g [W/kg]	0.396	0.384
Power Drift [dB]		0.01
TSL Correction	Positive only	Positive only
M2 / M1 [%]		51.0
Dist 3dB Peak [mm]		11.2



Test Date : 2024-02-28 | Ambient Temp : 22.8 °C | Tissue Temp : 22.2 °C

Test Mode

8_LTE Band 25_QPSK20M_Top Side_0mm_Ch26140_1RB_Offset0_Ant Main_Sample 1_INPAQ

Device Under Test Properties

Manufacturer or Brand	Model No. or Code Name	Sample No. or IMEI	DUT Type
ASUS	CR1204FG	A001	Convertible PC

Exposure Conditions

Phantom Section	Band	Group, UID	Frequency [MHz], Channel Number	Conversion Factor	TSL Conductivity [S/m]	TSL Permittivity
Flat	Band 25	LTE-FDD, 10169 - CAF	1860.000, 26140	7.7	1.38	41.5

Hardware Setup

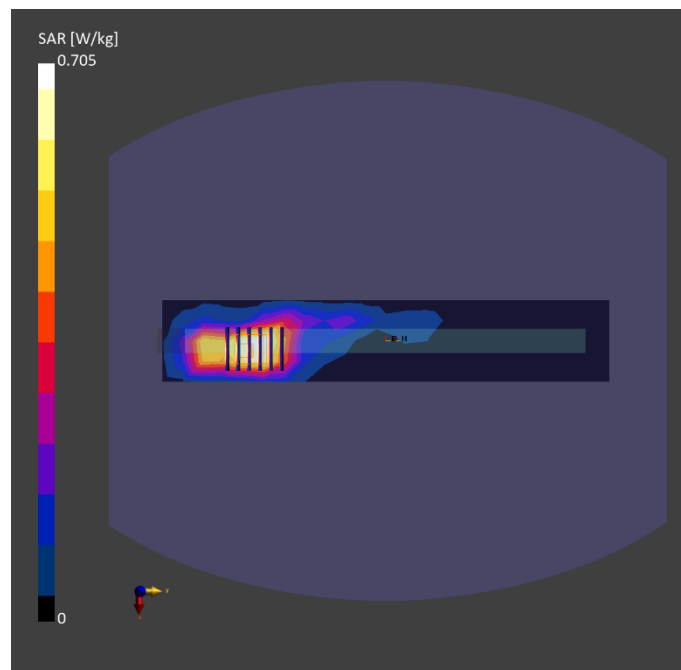
Phantom	Tissue Simulating Liquid	Probe Calibration Date	DAE Calibration Date
ELI V8.0 (20deg probe tilt) - 2179	HBBL-600-10000	EX3DV4 - SN7650 / 2023-05-22	DAE4 Sn1741 / 2023-08-23

Scan Setup

	Area Scan	Zoom Scan
Grid Extents [mm]	60.0 x 330.0	32.0 x 32.0 x 30.0
Grid Steps [mm]	15.0 x 15.0	8.0 x 8.0 x 5.0
Sensor Surface [mm]	3.0	1.4
Graded Grid	N/A	Yes
Grading Ratio	N/A	1.4

Measurement Results

	Area Scan	Zoom Scan
psSAR-1g [W/kg]	0.652	0.834
psSAR-10g [W/kg]	0.380	0.434
Power Drift [dB]		-0.01
TSL Correction	Positive only	Positive only
M2 / M1 [%]		48.1
Dist 3dB Peak [mm]		8.0



Test Date : 2024-02-24 | Ambient Temp : 22.4 °C | Tissue Temp : 22.2 °C

Test Mode

9_LTE Band 26_QPSK15M_Top Side_0mm_Ch26765_1RB_Offset0_Ant Main_Sample 1_INPAQ

Device Under Test Properties

Manufacturer or Brand	Model No. or Code Name	Sample No. or IMEI	DUT Type
ASUS	CR1204FG	S1NTLP00330018	Convertible PC

Exposure Conditions

Phantom Section	Band	Group, UID	Frequency [MHz], Channel Number	Conversion Factor	TSL Conductivity [S/m]	TSL Permittivity
Flat	Band 26	LTE-FDD, 10181 - CAF	821.500, 26765	10.21	0.909	44.2

Hardware Setup

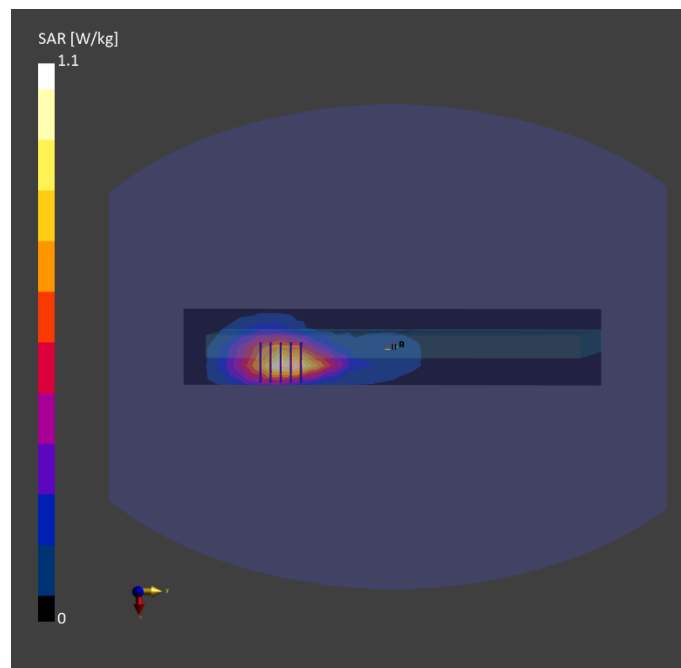
Phantom	Tissue Simulating Liquid	Probe Calibration Date	DAE Calibration Date
ELI V8.0 (20deg probe tilt) - 2179	HBBL-600-10000	EX3DV4 - SN7650 / 2023-05-22	DAE4 Sn1741 / 2023-08-23

Scan Setup

	Area Scan	Zoom Scan
Grid Extents [mm]	60.0 x 330.0	32.0 x 32.0 x 30.0
Grid Steps [mm]	15.0 x 15.0	8.0 x 8.0 x 5.0
Sensor Surface [mm]	3.0	1.4
Graded Grid	N/A	Yes
Grading Ratio	N/A	1.4

Measurement Results

	Area Scan	Zoom Scan
psSAR-1g [W/kg]	0.953	1.06
psSAR-10g [W/kg]	0.608	0.595
Power Drift [dB]		0.01
TSL Correction	Positive only	Positive only
M2 / M1 [%]		50.0
Dist 3dB Peak [mm]		9.4



Test Date : 2024-02-26 | Ambient Temp : 22.7 °C | Tissue Temp : 22.4 °C

Test Mode

10_LTE Band 30_QPSK10M_Top Side_0mm_Ch27710_1RB_Offset0_Ant Main_Sample 1_INPAQ

Device Under Test Properties

Manufacturer or Brand	Model No. or Code Name	Sample No. or IMEI	DUT Type
ASUS	CR1204FG	A008	Convertible PC

Exposure Conditions

Phantom Section	Band	Group, UID	Frequency [MHz], Channel Number	Conversion Factor	TSL Conductivity [S/m]	TSL Permittivity
Flat	Band 30	LTE-FDD, 10175 - CAH	2310.000, 27710	8.36	1.73	40.7

Hardware Setup

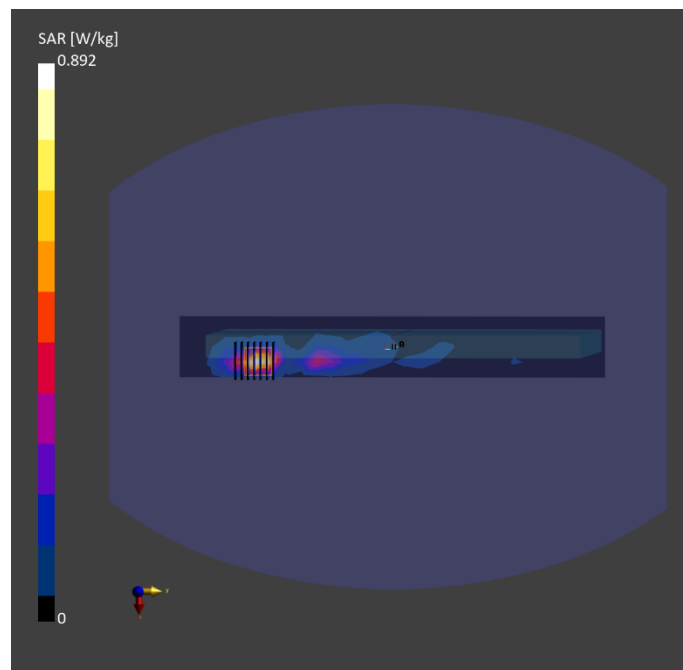
Phantom	Tissue Simulating Liquid	Probe Calibration Date	DAE Calibration Date
ELI V8.0 (20deg probe tilt) - 2179	HBBL-600-10000	EX3DV4 - SN7650 / 2023-05-22	DAE4 Sn1741 / 2023-08-23

Scan Setup

	Area Scan	Zoom Scan
Grid Extents [mm]	48.0 x 336.0	30.0 x 30.0 x 30.0
Grid Steps [mm]	12.0 x 12.0	5.0 x 5.0 x 5.0
Sensor Surface [mm]	3.0	1.4
Graded Grid	N/A	Yes
Grading Ratio	N/A	1.4

Measurement Results

	Area Scan	Zoom Scan
psSAR-1g [W/kg]	0.656	0.699
psSAR-10g [W/kg]	0.285	0.294
Power Drift [dB]		-0.03
TSL Correction	Positive only	Positive only
M2 / M1 [%]		46.3
Dist 3dB Peak [mm]		7.0



Test Date : 2024-02-25 | Ambient Temp : 22.6 °C | Tissue Temp : 22.3 °C

Test Mode

11_LTE Band 41_QPSK20M_Top Side_0mm_Ch40185_1RB_Offset0_Ant Main_Sample 1_INPAQ

Device Under Test Properties

Manufacturer or Brand	Model No. or Code Name	Sample No. or IMEI	DUT Type
ASUS	CR1204FG	S1NTLP00330018	Convertible PC

Exposure Conditions

Phantom Section	Band	Group, UID	Frequency [MHz], Channel Number	Conversion Factor	TSL Conductivity [S/m]	TSL Permittivity
Flat	Band 41	LTE-TDD, 10172 - CAH	2549.500, 40185	7.8	1.87	39.5

Hardware Setup

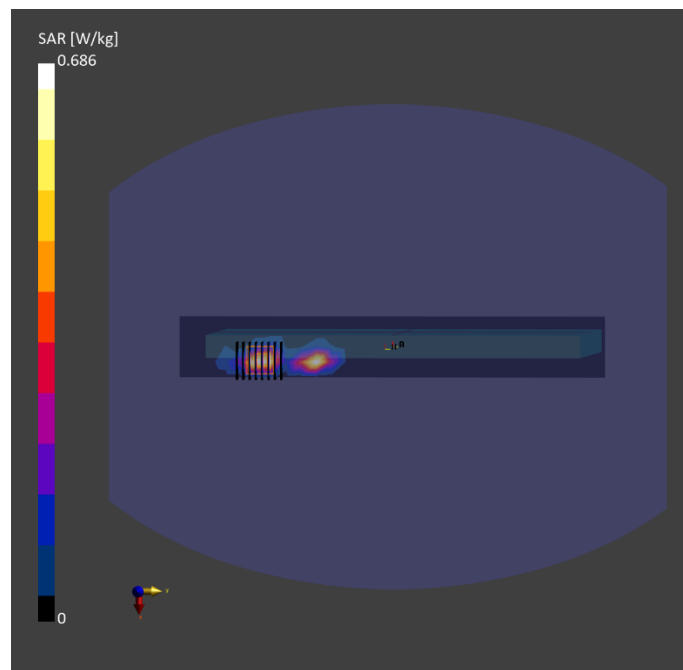
Phantom	Tissue Simulating Liquid	Probe Calibration Date	DAE Calibration Date
ELI V8.0 (20deg probe tilt) - 2179	HBBL-600-10000	EX3DV4 - SN7757 / 2023-08-22	DAE4 Sn1741 / 2023-08-23

Scan Setup

	Area Scan	Zoom Scan
Grid Extents [mm]	48.0 x 336.0	30.0 x 30.0 x 30.0
Grid Steps [mm]	12.0 x 12.0	5.0 x 5.0 x 5.0
Sensor Surface [mm]	3.0	1.4
Graded Grid	N/A	Yes
Grading Ratio	N/A	1.4

Measurement Results

	Area Scan	Zoom Scan
psSAR-1g [W/kg]	0.704	0.695
psSAR-10g [W/kg]	0.359	0.323
Power Drift [dB]		0.02
TSL Correction	Positive only	Positive only
M2 / M1 [%]		45.5
Dist 3dB Peak [mm]		6.0



Test Date : 2024-02-26 | Ambient Temp : 22.7 °C | Tissue Temp : 22.4 °C

Test Mode

12_LTE Band 48_QPSK20M_Top Side_0mm_Ch56640_1RB_Offset0_Ant Main_Sample 1_INPAQ

Device Under Test Properties

Manufacturer or Brand	Model No. or Code Name	Sample No. or IMEI	DUT Type
ASUS	CR1204FG	S1NTLP00330018	Convertible PC

Exposure Conditions

Phantom Section	Band	Group, UID	Frequency [MHz], Channel Number	Conversion Factor	TSL Conductivity [S/m]	TSL Permittivity
Flat	Band 48	LTE-TDD, 10172 - CAH	3690.000, 56640	6.8	2.91	39.3

Hardware Setup

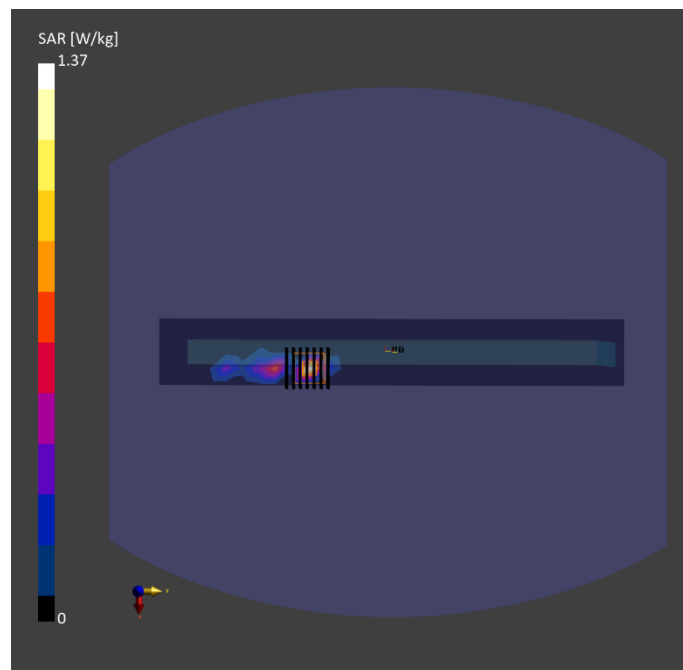
Phantom	Tissue Simulating Liquid	Probe Calibration Date	DAE Calibration Date
ELI V8.0 (20deg probe tilt) - 2179	HBBL-600-10000	EX3DV4 - SN7737 / 2023-06-05	DAE4 Sn1743 / 2023-08-17

Scan Setup

	Area Scan	Zoom Scan
Grid Extents [mm]	48.0 x 336.0	30.0 x 30.0 x 28.0
Grid Steps [mm]	12.0 x 12.0	5.0 x 5.0 x 2.5
Sensor Surface [mm]	3.0	1.4
Graded Grid	N/A	Yes
Grading Ratio	N/A	1.4

Measurement Results

	Area Scan	Zoom Scan
psSAR-1g [W/kg]	0.771	0.851
psSAR-10g [W/kg]	0.214	0.225
Power Drift [dB]		0.01
TSL Correction	Positive only	Positive only
M2 / M1 [%]		57.1
Dist 3dB Peak [mm]		5.0



Test Date : 2024-02-23 | Ambient Temp : 22.8 °C | Tissue Temp : 22.2 °C

Test Mode

13_LTE Band 66_QPSK20M_Top Side_0mm_Ch132322_1RB_Offset0_Ant Main_Sample 1_INPAQ

Device Under Test Properties

Manufacturer or Brand	Model No. or Code Name	Sample No. or IMEI	DUT Type
ASUS	CR1204FG	S1NTLP00330018	Convertible PC

Exposure Conditions

Phantom Section	Band	Group, UID	Frequency [MHz], Channel Number	Conversion Factor	TSL Conductivity [S/m]	TSL Permittivity
Flat	Band 66	LTE-FDD, 10169 - CAF	1745.000, 132322	8.87	1.33	41.3

Hardware Setup

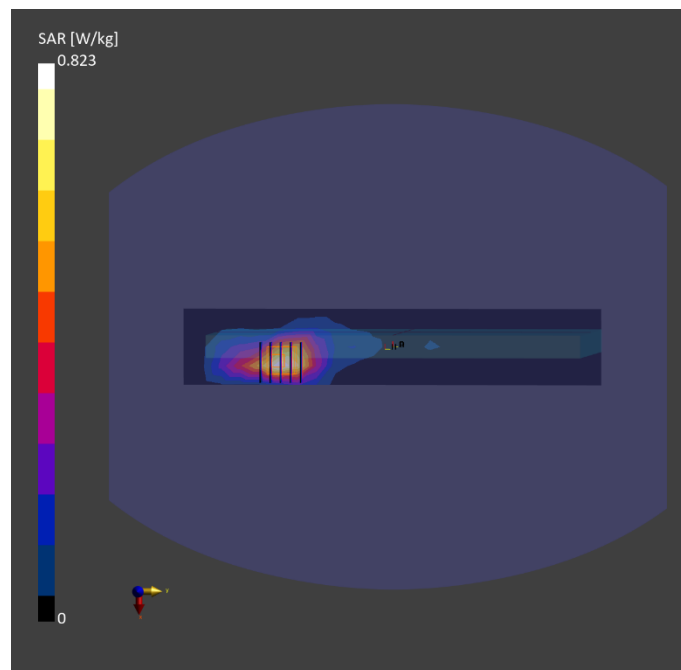
Phantom	Tissue Simulating Liquid	Probe Calibration Date	DAE Calibration Date
ELI V8.0 (20deg probe tilt) - 2179	HBBL-600-10000	EX3DV4 - SN7650 / 2023-05-22	DAE4 Sn1741 / 2023-08-23

Scan Setup

	Area Scan	Zoom Scan
Grid Extents [mm]	60.0 x 330.0	32.0 x 32.0 x 30.0
Grid Steps [mm]	15.0 x 15.0	8.0 x 8.0 x 5.0
Sensor Surface [mm]	3.0	1.4
Graded Grid	N/A	Yes
Grading Ratio	N/A	1.4

Measurement Results

	Area Scan	Zoom Scan
psSAR-1g [W/kg]	0.722	0.773
psSAR-10g [W/kg]	0.411	0.421
Power Drift [dB]		0.02
TSL Correction	Positive only	Positive only
M2 / M1 [%]		49.1
Dist 3dB Peak [mm]		8.0



Test Date : 2024-02-29 | Ambient Temp : 22.4 °C | Tissue Temp : 22.1 °C

Test Mode

14_LTE Band 71_QPSK20M_Top Side_0mm_Ch133372_1RB_Offset0_Ant Main_Sample 1_INPAQ

Device Under Test Properties

Manufacturer or Brand	Model No. or Code Name	Sample No. or IMEI	DUT Type
ASUS	CR1204FG	S1NTLP00330018	Convertible PC

Exposure Conditions

Phantom Section	Band	Group, UID	Frequency [MHz], Channel Number	Conversion Factor	TSL Conductivity [S/m]	TSL Permittivity
Flat	Band 71	LTE-FDD, 10169 - CAF	688.000, 133372	10.42	0.851	42.7

Hardware Setup

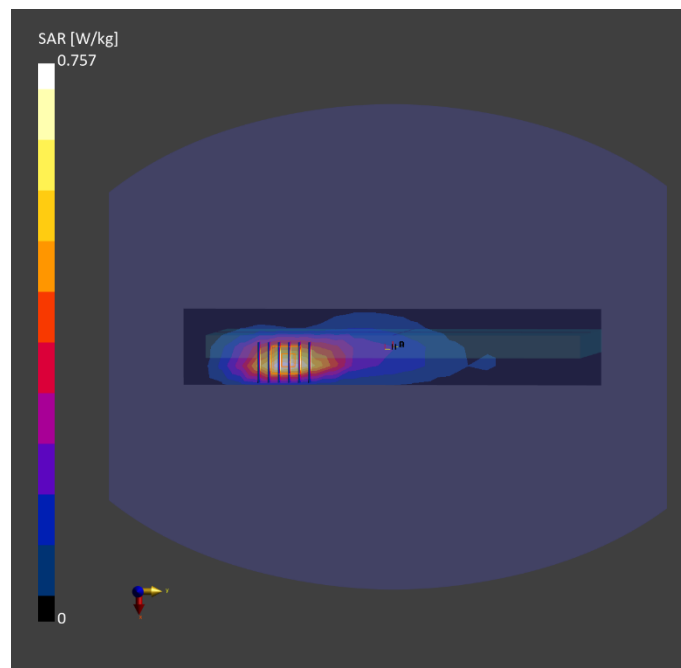
Phantom	Tissue Simulating Liquid	Probe Calibration Date	DAE Calibration Date
ELI V8.0 (20deg probe tilt) - 2179	HBBL-600-10000	EX3DV4 - SN7650 / 2023-05-22	DAE4 Sn1741 / 2023-08-23

Scan Setup

	Area Scan	Zoom Scan
Grid Extents [mm]	60.0 x 330.0	32.0 x 32.0 x 30.0
Grid Steps [mm]	15.0 x 15.0	8.0 x 8.0 x 5.0
Sensor Surface [mm]	3.0	1.4
Graded Grid	N/A	Yes
Grading Ratio	N/A	1.4

Measurement Results

	Area Scan	Zoom Scan
psSAR-1g [W/kg]	0.696	0.810
psSAR-10g [W/kg]	0.441	0.436
Power Drift [dB]		0.13
TSL Correction	Positive only	Positive only
M2 / M1 [%]		47.6
Dist 3dB Peak [mm]		8.0



Test Date : 2024-03-01 | Ambient Temp : 22.9 °C | Tissue Temp : 22.3 °C

Test Mode

15_WLAN 2.4G_802.11b_Bottom of laptop_0mm_Ch1_Ant 1_Sample 1_INPAQ

Device Under Test Properties

Manufacturer or Brand	Model No. or Code Name	Sample No. or IMEI	DUT Type
ASUS	CR1204FG	A008	Convertible PC

Exposure Conditions

Phantom Section	Band	Group, UID	Frequency [MHz], Channel Number	Conversion Factor	TSL Conductivity [S/m]	TSL Permittivity
Flat	WLAN 2.4GHz	WLAN, 10012 - CAB	2412.000, 1	8.2	1.72	39.6

Hardware Setup

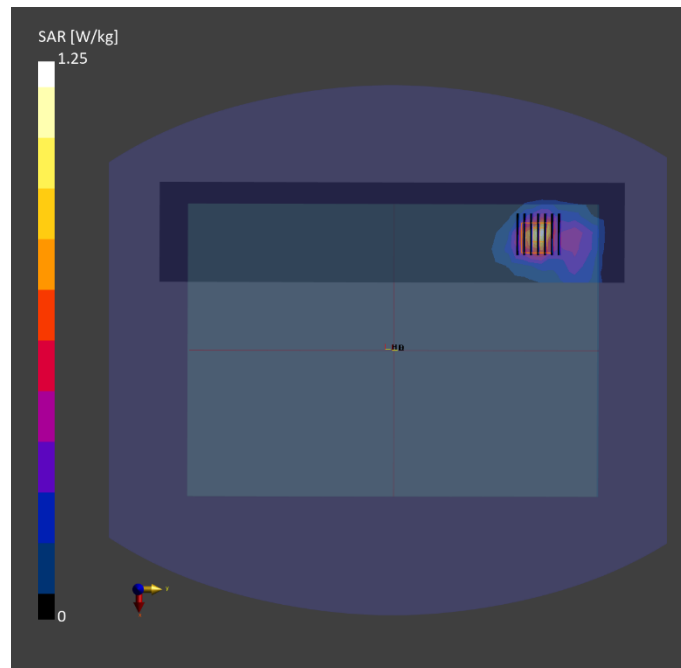
Phantom	Tissue Simulating Liquid	Probe Calibration Date	DAE Calibration Date
ELI V8.0 (20deg probe tilt) - 2179	HBBL-600-10000	EX3DV4 - SN7650 / 2023-05-22	DAE4 Sn1741 / 2023-08-23

Scan Setup

	Area Scan	Zoom Scan
Grid Extents [mm]	72.0 x 336.0	30.0 x 30.0 x 30.0
Grid Steps [mm]	12.0 x 12.0	5.0 x 5.0 x 5.0
Sensor Surface [mm]	3.0	1.4
Graded Grid	N/A	Yes
Grading Ratio	N/A	1.4

Measurement Results

	Area Scan	Zoom Scan
psSAR-1g [W/kg]	0.936	1.01
psSAR-10g [W/kg]	0.434	0.441
Power Drift [dB]		0.03
TSL Correction	Positive only	Positive only
M2 / M1 [%]		43.1
Dist 3dB Peak [mm]		9.0



Test Date : 2024-03-01 | Ambient Temp : 22.9 °C | Tissue Temp : 22.3 °C

Test Mode

16_BT_GFSK_Bottom of laptop_0mm_Ch78_Ant 1_Sample 1_INPAQ

Device Under Test Properties

Manufacturer or Brand	Model No. or Code Name	Sample No. or IMEI	DUT Type
ASUS	CR1204FG	A008	Convertible PC

Exposure Conditions

Phantom Section	Band	Group, UID	Frequency [MHz], Channel Number	Conversion Factor	TSL Conductivity [S/m]	TSL Permittivity
Flat	ISM 2.4 GHz Band	Bluetooth, 10032 - CAA	2480.000, 78	8.2	1.77	39.6

Hardware Setup

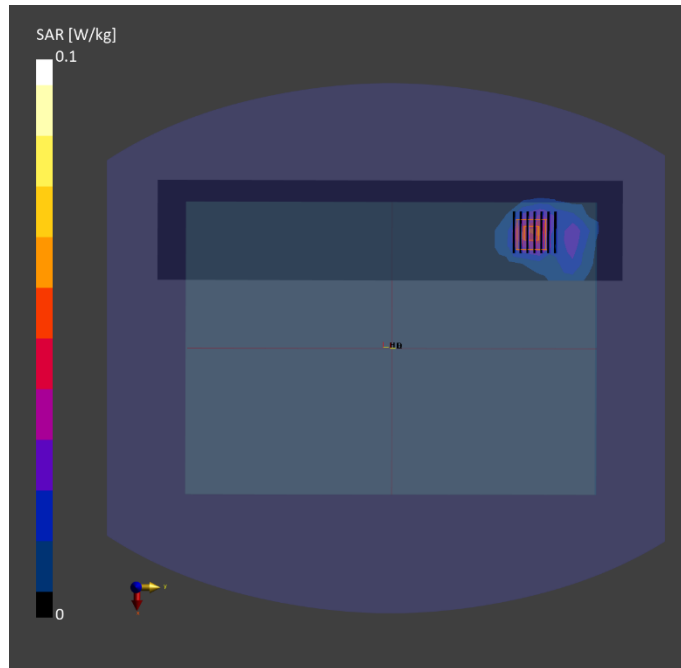
Phantom	Tissue Simulating Liquid	Probe Calibration Date	DAE Calibration Date
ELI V8.0 (20deg probe tilt) - 2179	HBBL-600-10000	EX3DV4 - SN7650 / 2023-05-22	DAE4 Sn1741 / 2023-08-23

Scan Setup

	Area Scan	Zoom Scan
Grid Extents [mm]	72.0 x 336.0	30.0 x 30.0 x 30.0
Grid Steps [mm]	12.0 x 12.0	5.0 x 5.0 x 5.0
Sensor Surface [mm]	3.0	1.4
Graded Grid	N/A	Yes
Grading Ratio	N/A	1.4

Measurement Results

	Area Scan	Zoom Scan
psSAR-1g [W/kg]	0.047	0.063
psSAR-10g [W/kg]	0.023	0.027
Power Drift [dB]		0.02
TSL Correction	Positive only	Positive only
M2 / M1 [%]		42.9
Dist 3dB Peak [mm]		9.5



Test Date : 2024-03-02 | Ambient Temp : 22.3 °C | Tissue Temp : 21.9 °C

Test Mode

18_WLAN 5G_802.11ac VHT160_Front Side of laptop_0mm_Ch50_Ant 1_Sample 1_INPAQ

Device Under Test Properties

Manufacturer or Brand	Model No. or Code Name	Sample No. or IMEI	DUT Type
ASUS	CR1204FG	A008	Convertible PC

Exposure Conditions

Phantom Section	Band	Group, UID	Frequency [MHz], Channel Number	Conversion Factor	TSL Conductivity [S/m]	TSL Permittivity
Flat	WLAN 5GHz	WLAN, 10554 - AAD	5250.000, 50	5.91	4.51	36.1

Hardware Setup

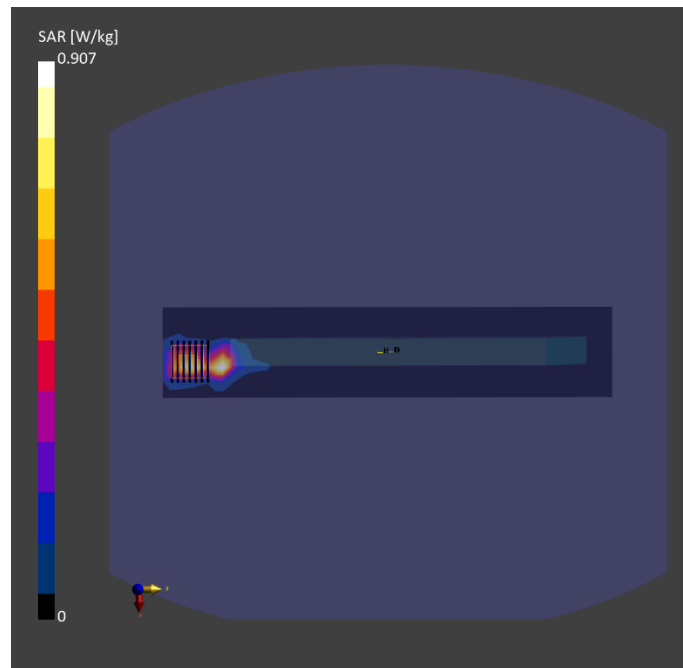
Phantom	Tissue Simulating Liquid	Probe Calibration Date	DAE Calibration Date
ELI V8.0 (20deg probe tilt) - 2179	HBBL-600-10000	EX3DV4 - SN7650 / 2023-05-22	DAE4 Sn1741 / 2023-08-23

Scan Setup

	Area Scan	Zoom Scan
Grid Extents [mm]	60.0 x 300.0	24.0 x 24.0 x 22.0
Grid Steps [mm]	10.0 x 10.0	4.0 x 4.0 x 1.4
Sensor Surface [mm]	3.0	1.4
Graded Grid	N/A	Yes
Grading Ratio	N/A	1.4

Measurement Results

	Area Scan	Zoom Scan
psSAR-1g [W/kg]	0.597	0.696
psSAR-10g [W/kg]	0.205	0.209
Power Drift [dB]		-0.02
TSL Correction	Positive only	Positive only
M2 / M1 [%]		65.0
Dist 3dB Peak [mm]		6.9



Test Date : 2024-03-03 | Ambient Temp : 22.2 °C | Tissue Temp : 21.7 °C

Test Mode

19_WLAN 5G_802.11ac_VHT160_Front Side of laptop_0mm_Ch114_Ant 1_Sample 1_INPAQ

Device Under Test Properties

Manufacturer or Brand	Model No. or Code Name	Sample No. or IMEI	DUT Type
ASUS	CR1204FG	A008	Convertible PC

Exposure Conditions

Phantom Section	Band	Group, UID	Frequency [MHz], Channel Number	Conversion Factor	TSL Conductivity [S/m]	TSL Permittivity
Flat	WLAN 5GHz	WLAN, 10554 - AAD	5570.000, 114	5.25	4.83	37.3

Hardware Setup

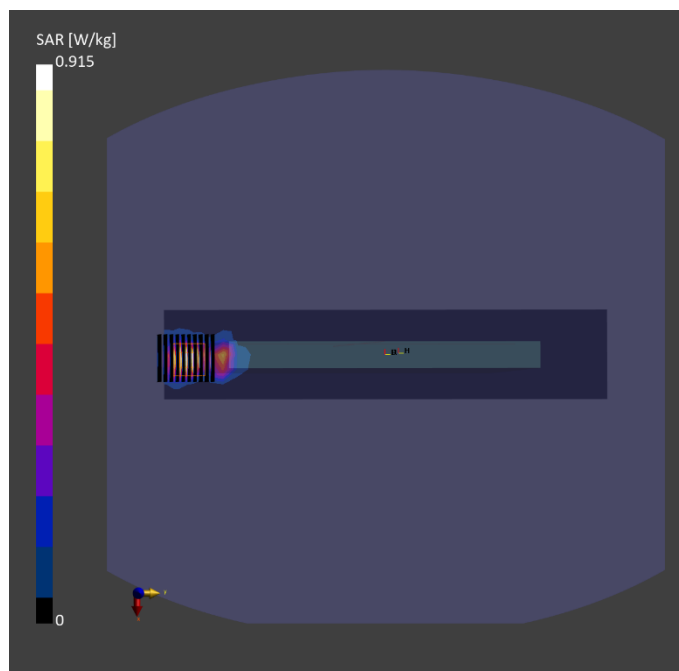
Phantom	Tissue Simulating Liquid	Probe Calibration Date	DAE Calibration Date
ELI V8.0 (20deg probe tilt) - 2179	HBBL-600-10000	EX3DV4 - SN7650 / 2023-05-22	DAE4 Sn1741 / 2023-08-23

Scan Setup

	Area Scan	Zoom Scan
Grid Extents [mm]	60.0 x 300.0	22.0 x 22.0 x 22.0
Grid Steps [mm]	10.0 x 10.0	4.0 x 4.0 x 1.4
Sensor Surface [mm]	3.0	1.4
Graded Grid	N/A	Yes
Grading Ratio	N/A	1.4

Measurement Results

	Area Scan	Zoom Scan
psSAR-1g [W/kg]	0.708	0.799
psSAR-10g [W/kg]	0.241	0.242
Power Drift [dB]		-0.02
TSL Correction	Positive only	Positive only
M2 / M1 [%]		62.8
Dist 3dB Peak [mm]		7.2



Test Date : 2024-03-03 | Ambient Temp : 22.2 °C | Tissue Temp : 21.7 °C

Test Mode

19_WLAN 5G_802.11ac VHT80_Front Side of laptop_0mm_Ch138_Ant 1_Sample 1_INPAQ

Device Under Test Properties

Manufacturer or Brand	Model No. or Code Name	Sample No. or IMEI	DUT Type
ASUS	CR1204FG	A008	Convertible PC

Exposure Conditions

Phantom Section	Band	Group, UID	Frequency [MHz], Channel Number	Conversion Factor	TSL Conductivity [S/m]	TSL Permittivity
Flat	WLAN 5GHz	WLAN, 10544 - AAC	5690.000, 138	5.25	5.04	37.6

Hardware Setup

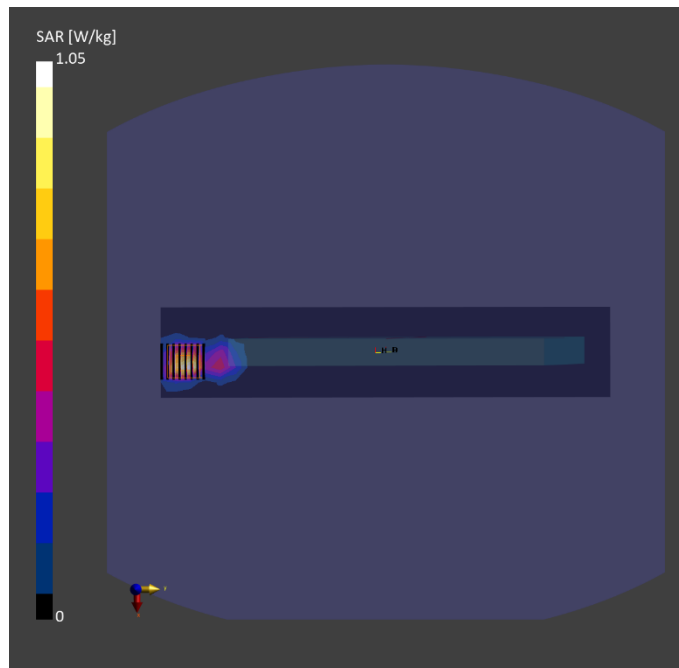
Phantom	Tissue Simulating Liquid	Probe Calibration Date	DAE Calibration Date
ELI V8.0 (20deg probe tilt) - 2179	HBBL-600-10000	EX3DV4 - SN7650 / 2023-05-22	DAE4 Sn1741 / 2023-08-23

Scan Setup

	Area Scan	Zoom Scan
Grid Extents [mm]	60.0 x 300.0	22.0 x 22.0 x 22.0
Grid Steps [mm]	10.0 x 10.0	4.0 x 4.0 x 1.4
Sensor Surface [mm]	3.0	1.4
Graded Grid	N/A	Yes
Grading Ratio	N/A	1.4

Measurement Results

	Area Scan	Zoom Scan
psSAR-1g [W/kg]	0.782	0.874
psSAR-10g [W/kg]	0.256	0.267
Power Drift [dB]		-0.01
TSL Correction	Positive only	Positive only
M2 / M1 [%]		60.2
Dist 3dB Peak [mm]		7.2



Test Date : 2024-03-04 | Ambient Temp : 22.2 °C | Tissue Temp : 21.8 °C

Test Mode

20_WLAN 5G_802.11ac VHT160_Front Side of laptop_0mm_Ch163_Ant 1_Sample 1_INPAQ

Device Under Test Properties

Manufacturer or Brand	Model No. or Code Name	Sample No. or IMEI	DUT Type
ASUS	CR1204FG	A008	Convertible PC

Exposure Conditions

Phantom Section	Band	Group, UID	Frequency [MHz], Channel Number	Conversion Factor	TSL Conductivity [S/m]	TSL Permittivity
Flat	WLAN 5GHz	WLAN, 10554 - AAD	5815.000, 163	5.28	4.81	37.5

Hardware Setup

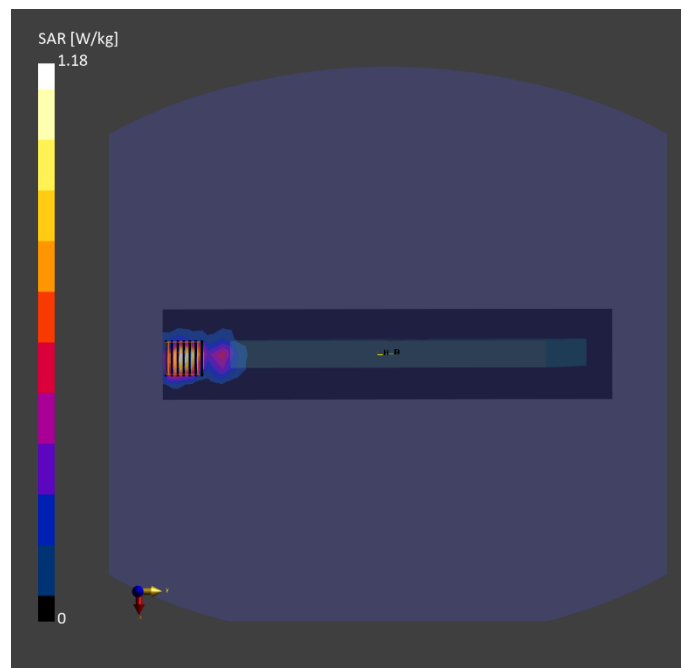
Phantom	Tissue Simulating Liquid	Probe Calibration Date	DAE Calibration Date
ELI V8.0 (20deg probe tilt) - 2179	HBBL-600-10000	EX3DV4 - SN7650 / 2023-05-22	DAE4 Sn1741 / 2023-08-23

Scan Setup

	Area Scan	Zoom Scan
Grid Extents [mm]	60.0 x 300.0	22.0 x 22.0 x 22.0
Grid Steps [mm]	10.0 x 10.0	4.0 x 4.0 x 1.4
Sensor Surface [mm]	3.0	1.4
Graded Grid	N/A	Yes
Grading Ratio	N/A	1.4

Measurement Results

	Area Scan	Zoom Scan
psSAR-1g [W/kg]	0.902	1.05
psSAR-10g [W/kg]	0.299	0.314
Power Drift [dB]		-0.02
TSL Correction	Positive only	Positive only
M2 / M1 [%]		59.5
Dist 3dB Peak [mm]		7.2



Test Date : 2024-03-04 | Ambient Temp : 22.2 °C | Tissue Temp : 21.8 °C

Test Mode

20_WLAN 5G_802.11ac VHT80_Front Side of laptop_0mm_Ch155_Ant 1_Sample 1_INPAQ

Device Under Test Properties

Manufacturer or Brand	Model No. or Code Name	Sample No. or IMEI	DUT Type
ASUS	CR1204FG	A008	Convertible PC

Exposure Conditions

Phantom Section	Band	Group, UID	Frequency [MHz], Channel Number	Conversion Factor	TSL Conductivity [S/m]	TSL Permittivity
Flat	WLAN 5GHz	WLAN, 10544 - AAC	5775.000, 155	5.28	4.92	37.8

Hardware Setup

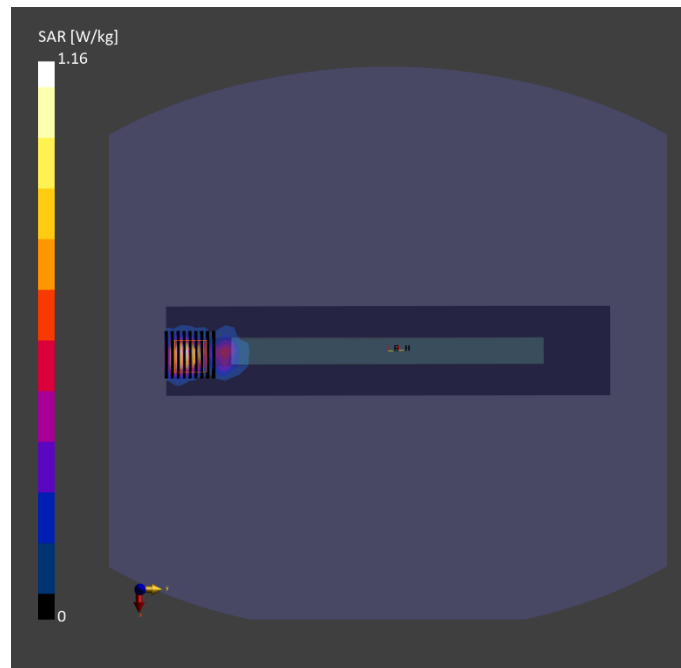
Phantom	Tissue Simulating Liquid	Probe Calibration Date	DAE Calibration Date
ELI V8.0 (20deg probe tilt) - 2179	HBBL-600-10000	EX3DV4 - SN7650 / 2023-05-22	DAE4 Sn1741 / 2023-08-23

Scan Setup

	Area Scan	Zoom Scan
Grid Extents [mm]	60.0 x 300.0	22.0 x 22.0 x 22.0
Grid Steps [mm]	10.0 x 10.0	4.0 x 4.0 x 1.4
Sensor Surface [mm]	3.0	1.4
Graded Grid	N/A	Yes
Grading Ratio	N/A	1.4

Measurement Results

	Area Scan	Zoom Scan
psSAR-1g [W/kg]	0.891	1.03
psSAR-10g [W/kg]	0.296	0.310
Power Drift [dB]		-0.04
TSL Correction	Positive only	Positive only
M2 / M1 [%]		60.6
Dist 3dB Peak [mm]		7.2



Test Date : 2024-03-05 | Ambient Temp : 22.6 °C | Tissue Temp : 22.1 °C

Test Mode

21_WLAN 6G_802.11ax HE160_Left Side_0mm_Ch111_Ant 0_Sample 1_INPAQ

Device Under Test Properties

Manufacturer or Brand	Model No. or Code Name	Sample No. or IMEI	DUT Type
ASUS	CR1204FG	A008	Convertible PC

Exposure Conditions

Phantom Section	Band	Group, UID	Frequency [MHz], Channel Number	Conversion Factor	TSL Conductivity [S/m]	TSL Permittivity
Flat	U-NII-6	WLAN, 10755 - AAC	6505.000, 111	5.4	5.92	35.9

Hardware Setup

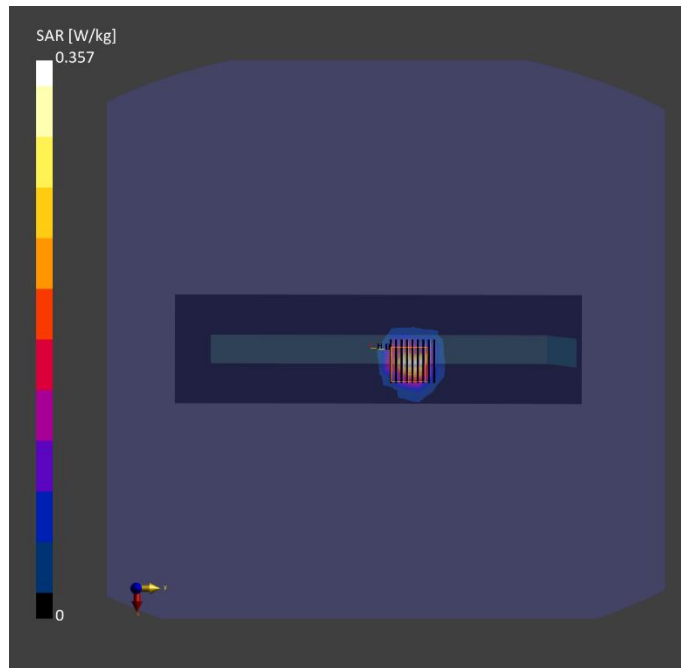
Phantom	Tissue Simulating Liquid	Probe Calibration Date	DAE Calibration Date
ELI V8.0 (20deg probe tilt) - 2179	HBBL-600-10000	EX3DV4 - SN7650 / 2023-05-22	DAE4 Sn1741 / 2023-08-23

Scan Setup

	Area Scan	Zoom Scan
Grid Extents [mm]	68.0 x 255.0	23.8 x 23.8 x 22.0
Grid Steps [mm]	8.5 x 8.5	3.4 x 3.4 x 1.4
Sensor Surface [mm]	3.0	1.4
Graded Grid	N/A	Yes
Grading Ratio	N/A	1.4

Measurement Results

	Area Scan	Zoom Scan
psSAR-1g [W/kg]	0.273	0.312
psSAR-10g [W/kg]	0.091	0.102
psAPD (1.0 cm ² , sq) [W/m ²]		3.12
psAPD (4.0 cm ² , sq) [W/m ²]		2.31
Power Drift [dB]		-0.09
TSL Correction	Positive only	Positive only
M2 / M1 [%]		47.5
Dist 3dB Peak [mm]		7.0



Test Date : 2024-03-08 | Ambient Temp : 22.2 °C

Test Mode

22_WLAN 6G_802.11ax HE160_Left Side_2mm_Ch111_Ant 0_Sample 1_INPAQ

Device Under Test Properties

Manufacturer or Brand	Model No. or Code Name	Sample No. or IMEI	DUT Type
ASUS	CR1204FG	A008	Convertible PC

Exposure Conditions

Phantom Section	Band	Group, UID	Frequency [MHz], Channel Number	Conversion Factor
5G	U-NII-6	WLAN, 10755 - AAC	6505.0, 111	1.0

Hardware Setup

Phantom	Medium	Probe Calibration Date	DAE Calibration Date
mmWave - 1102	Air	EUmmWV3 - SN9403_F1-55GHz / 2023-12-05	DAE4 Sn1741 / 2022-08-11

Scan Setup

	5G Scan
Grid Extents [mm]	92.0 x 92.0
Grid Steps [mm]	0.0542 x 0.0542
Sensor Surface [mm]	2.0

Measurement Results

	5G Scan
Avg. Area [cm ²]	4.00
psPD n+ [W/m ²]	3.31
psPD tot+ [W/m ²]	3.95
psPD mod+ [W/m ²]	4.15
Peak PD tot [W/m ²]	6.40
Power Drift [dB]	-0.09

