

### #01\_HAC\_E\_GSM850\_GSM Voice\_Ch128

Communication System: GSM-FDD (TDMA, GMSK); Frequency: 824.2 MHz; Duty Cycle: 1:8.3  
 Medium: Air Medium parameters used:  $\sigma = 0$  S/m,  $\epsilon_r = 1$ ;  $\rho = 1000$  kg/m<sup>3</sup>  
 Ambient Temperature : 23.4 °C

#### DASY5 Configuration

- Probe: ER3DV6 - SN2358; ConvF(1, 1, 1); Calibrated: 2017/1/19;
- Sensor-Surface: (Fix Surface)
- Electronics: DAE4 Sn778; Calibrated: 2016/5/12
- Phantom: HAC Test Arch with AMCC; Type: SD HAC P01 BA;
- Measurement SW: DASY52, Version 52.8 (8); SEMCAD X Version 14.6.10 (7373)

#### E Scan - ER3D: 15 mm from Probe Center to the Device/Hearing Aid Compatibility

**Test (101x101x1):** Interpolated grid: dx=0.5000 mm, dy=0.5000 mm

Device Reference Point: 0, 0, -6.3 mm

Reference Value = 42.48 V/m; Power Drift = -0.09 dB

Applied MIF = 3.63 dB

RF audio interference level = 34.62 dBV/m

**Emission category: M4**

MIF scaled E-field

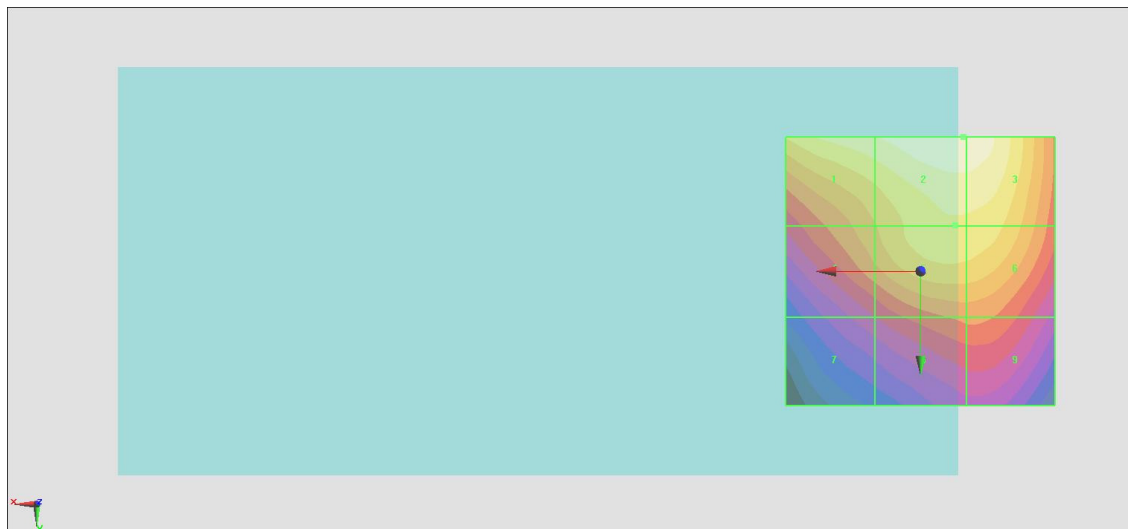
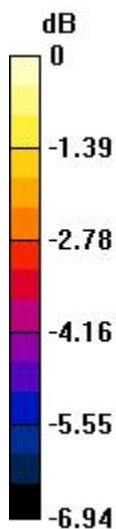
Grid 1 <b>M4</b> <b>34.14 dBV/m</b>	Grid 2 <b>M4</b> <b>34.62 dBV/m</b>	Grid 3 <b>M4</b> <b>34.62 dBV/m</b>
Grid 4 <b>M4</b> <b>32.75 dBV/m</b>	Grid 5 <b>M4</b> <b>33.62 dBV/m</b>	Grid 6 <b>M4</b> <b>33.6 dBV/m</b>
Grid 7 <b>M4</b> <b>30.92 dBV/m</b>	Grid 8 <b>M4</b> <b>32.01 dBV/m</b>	Grid 9 <b>M4</b> <b>32.02 dBV/m</b>

**Cursor:**

Total = 34.62 dBV/m

E Category: M4

Location: -8, -25, 8.7 mm



0 dB = 53.85 V/m = 34.62 dBV/m

## #02\_HAC\_E\_GSM850\_GSM Voice\_Ch189

Communication System: GSM-FDD (TDMA, GMSK); Frequency: 836.4 MHz; Duty Cycle: 1:8.3

Medium: Air Medium parameters used:  $\sigma = 0$  S/m,  $\epsilon_r = 1$ ;  $\rho = 1000$  kg/m<sup>3</sup>

Ambient Temperature : 23.4 °C

### DASY5 Configuration

- Probe: ER3DV6 - SN2358; ConvF(1, 1, 1); Calibrated: 2017/1/19;
- Sensor-Surface: (Fix Surface)
- Electronics: DAE4 Sn778; Calibrated: 2016/5/12
- Phantom: HAC Test Arch with AMCC; Type: SD HAC P01 BA;
- Measurement SW: DASY52, Version 52.8 (8); SEMCAD X Version 14.6.10 (7373)

### E Scan - ER3D: 15 mm from Probe Center to the Device/Hearing Aid Compatibility

**Test (101x101x1):** Interpolated grid: dx=0.5000 mm, dy=0.5000 mm

Device Reference Point: 0, 0, -6.3 mm

Reference Value = 41.14 V/m; Power Drift = 0.05 dB

Applied MIF = 3.63 dB

RF audio interference level = 35.80 dBV/m

**Emission category: M4**

MIF scaled E-field

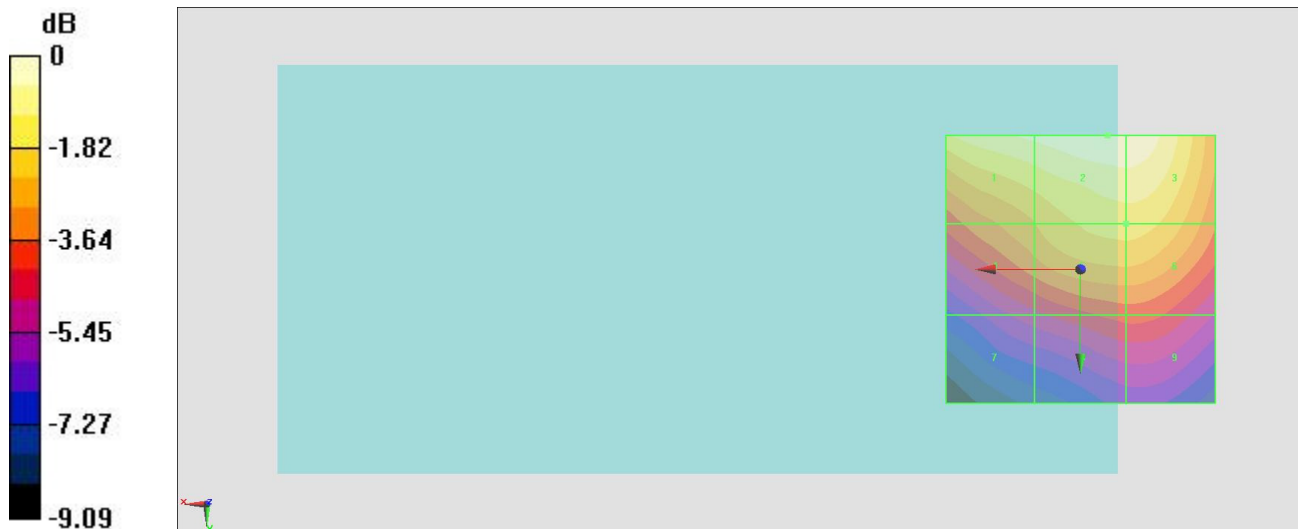
Grid 1 <b>M4</b> <b>35.36 dBV/m</b>	Grid 2 <b>M4</b> <b>35.8 dBV/m</b>	Grid 3 <b>M4</b> <b>35.78 dBV/m</b>
Grid 4 <b>M4</b> <b>33.37 dBV/m</b>	Grid 5 <b>M4</b> <b>34.25 dBV/m</b>	Grid 6 <b>M4</b> <b>34.25 dBV/m</b>
Grid 7 <b>M4</b> <b>30.77 dBV/m</b>	Grid 8 <b>M4</b> <b>31.83 dBV/m</b>	Grid 9 <b>M4</b> <b>31.84 dBV/m</b>

**Cursor:**

Total = 35.80 dBV/m

E Category: M4

Location: -5, -25, 8.7 mm



0 dB = 61.64 V/m = 35.80 dBV/m

### #03\_HAC\_E\_GSM850\_GSM Voice\_Ch251

Communication System: GSM-FDD (TDMA, GMSK); Frequency: 848.8 MHz; Duty Cycle: 1:8.3

Medium: Air Medium parameters used:  $\sigma = 0$  S/m,  $\epsilon_r = 1$ ;  $\rho = 1000$  kg/m<sup>3</sup>

Ambient Temperature : 23.4 °C

#### DASY5 Configuration

- Probe: ER3DV6 - SN2358; ConvF(1, 1, 1); Calibrated: 2017/1/19;
- Sensor-Surface: (Fix Surface)
- Electronics: DAE4 Sn778; Calibrated: 2016/5/12
- Phantom: HAC Test Arch with AMCC; Type: SD HAC P01 BA;
- Measurement SW: DASY52, Version 52.8 (8); SEMCAD X Version 14.6.10 (7373)

#### E Scan - ER3D: 15 mm from Probe Center to the Device/Hearing Aid Compatibility

**Test (101x101x1):** Interpolated grid: dx=0.5000 mm, dy=0.5000 mm

Device Reference Point: 0, 0, -6.3 mm

Reference Value = 39.58 V/m; Power Drift = -0.05 dB

Applied MIF = 3.63 dB

RF audio interference level = 35.15 dBV/m

**Emission category: M4**

MIF scaled E-field

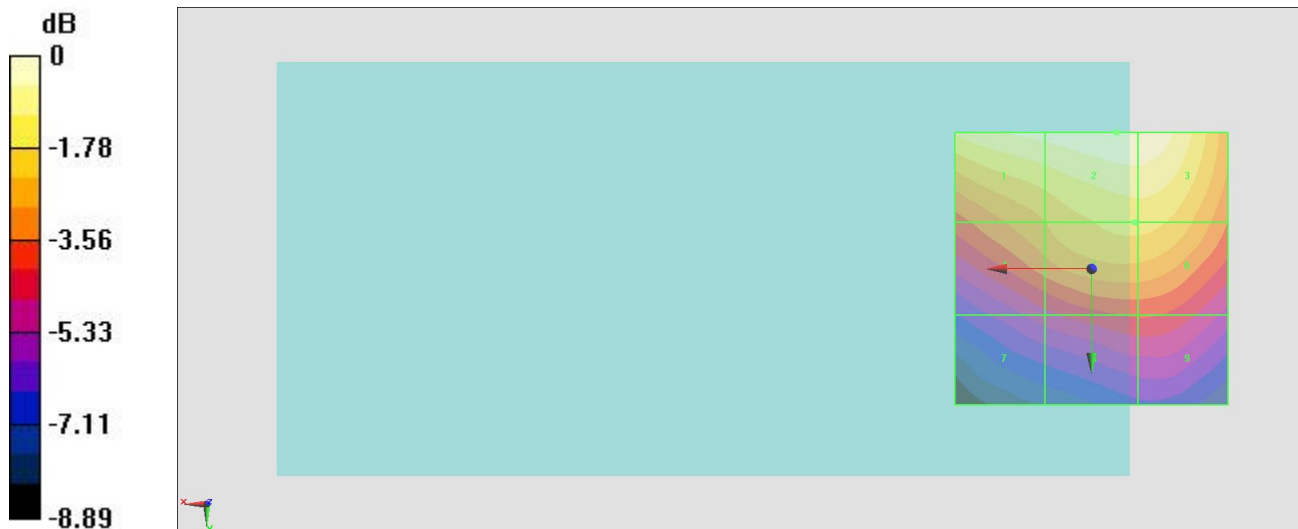
Grid 1 <b>M4</b> <b>34.79 dBV/m</b>	Grid 2 <b>M4</b> <b>35.15 dBV/m</b>	Grid 3 <b>M4</b> <b>35.14 dBV/m</b>
Grid 4 <b>M4</b> <b>32.78 dBV/m</b>	Grid 5 <b>M4</b> <b>33.57 dBV/m</b>	Grid 6 <b>M4</b> <b>33.57 dBV/m</b>
Grid 7 <b>M4</b> <b>30.2 dBV/m</b>	Grid 8 <b>M4</b> <b>31.09 dBV/m</b>	Grid 9 <b>M4</b> <b>31.1 dBV/m</b>

**Cursor:**

Total = 35.15 dBV/m

E Category: M4

Location: -4.5, -25, 8.7 mm



0 dB = 57.21 V/m = 35.15 dBV/m

### #04\_HAC\_E\_GSM1900\_GSM Voice\_Ch512

Communication System: GSM-FDD (TDMA, GMSK); Frequency: 1850.2 MHz; Duty Cycle: 1:8.3  
 Medium: Air Medium parameters used:  $\sigma = 0$  S/m,  $\epsilon_r = 1$ ;  $\rho = 1000$  kg/m<sup>3</sup>  
 Ambient Temperature : 23.4 °C

#### DASY5 Configuration

- Probe: ER3DV6 - SN2358; ConvF(1, 1, 1); Calibrated: 2017/1/19;
- Sensor-Surface: (Fix Surface)
- Electronics: DAE4 Sn778; Calibrated: 2016/5/12
- Phantom: HAC Test Arch with AMCC; Type: SD HAC P01 BA;
- Measurement SW: DASY52, Version 52.8 (8); SEMCAD X Version 14.6.10 (7373)

#### E Scan - ER3D: 15 mm from Probe Center to the Device/Hearing Aid Compatibility

**Test (101x101x1):** Interpolated grid: dx=0.5000 mm, dy=0.5000 mm

Device Reference Point: 0, 0, -6.3 mm

Reference Value = 26.57 V/m; Power Drift = -0.04 dB

Applied MIF = 3.63 dB

RF audio interference level = 29.51 dBV/m

**Emission category: M4**

MIF scaled E-field

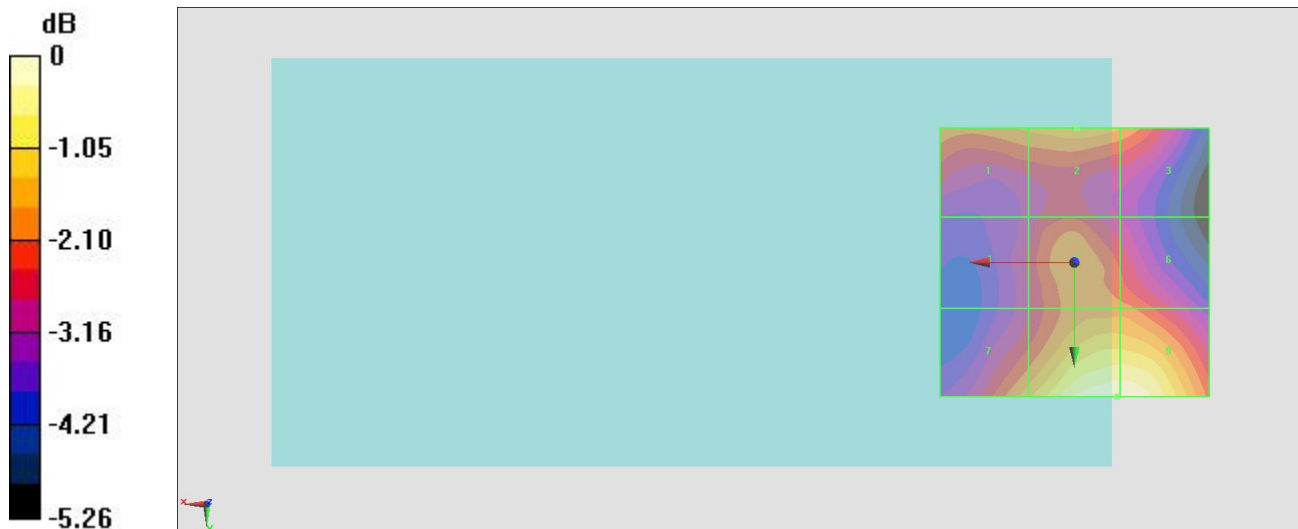
Grid 1 <b>M4</b> <b>27.84 dBV/m</b>	Grid 2 <b>M4</b> <b>28.1 dBV/m</b>	Grid 3 <b>M4</b> <b>27.81 dBV/m</b>
Grid 4 <b>M4</b> <b>26.8 dBV/m</b>	Grid 5 <b>M4</b> <b>27.71 dBV/m</b>	Grid 6 <b>M4</b> <b>27.58 dBV/m</b>
Grid 7 <b>M4</b> <b>28.04 dBV/m</b>	Grid 8 <b>M4</b> <b>29.51 dBV/m</b>	Grid 9 <b>M4</b> <b>29.51 dBV/m</b>

**Cursor:**

Total = 29.51 dBV/m

E Category: M4

Location: -8, 25, 8.7 mm



0 dB = 29.88 V/m = 29.51 dBV/m

### #05\_HAC\_E\_GSM1900\_GSM Voice\_Ch661

Communication System: GSM-FDD (TDMA, GMSK); Frequency: 1880 MHz; Duty Cycle: 1:8.3  
 Medium: Air Medium parameters used:  $\sigma = 0$  S/m,  $\epsilon_r = 1$ ;  $\rho = 1000$  kg/m<sup>3</sup>  
 Ambient Temperature : 23.4 °C

**DASY5 Configuration**

- Probe: ER3DV6 - SN2358; ConvF(1, 1, 1); Calibrated: 2017/1/19;
- Sensor-Surface: (Fix Surface)
- Electronics: DAE4 Sn778; Calibrated: 2016/5/12
- Phantom: HAC Test Arch with AMCC; Type: SD HAC P01 BA;
- Measurement SW: DASY52, Version 52.8 (8); SEMCAD X Version 14.6.10 (7373)

**E Scan - ER3D: 15 mm from Probe Center to the Device/Hearing Aid Compatibility**

**Test (101x101x1):** Interpolated grid: dx=0.5000 mm, dy=0.5000 mm

Device Reference Point: 0, 0, -6.3 mm

Reference Value = 26.84 V/m; Power Drift = -0.07 dB

Applied MIF = 3.63 dB

RF audio interference level = 29.78 dBV/m

**Emission category: M4**

MIF scaled E-field

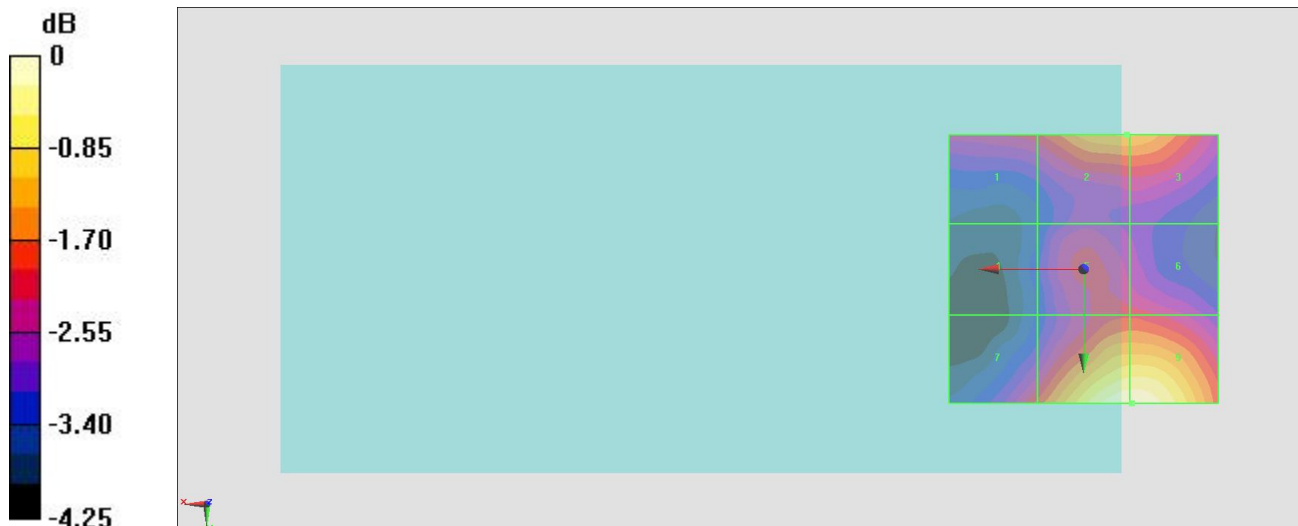
Grid 1 <b>M4</b> <b>27.75 dBV/m</b>	Grid 2 <b>M4</b> <b>28.7 dBV/m</b>	Grid 3 <b>M4</b> <b>28.7 dBV/m</b>
Grid 4 <b>M4</b> <b>26.61 dBV/m</b>	Grid 5 <b>M4</b> <b>27.74 dBV/m</b>	Grid 6 <b>M4</b> <b>27.74 dBV/m</b>
Grid 7 <b>M4</b> <b>27.94 dBV/m</b>	Grid 8 <b>M4</b> <b>29.78 dBV/m</b>	Grid 9 <b>M4</b> <b>29.78 dBV/m</b>

**Cursor:**

Total = 29.78 dBV/m

E Category: M4

Location: -9, 25, 8.7 mm



0 dB = 30.83 V/m = 29.78 dBV/m

## #06\_HAC\_E\_GSM1900\_GSM Voice\_Ch810

Communication System: GSM-FDD (TDMA, GMSK); Frequency: 1909.8 MHz; Duty Cycle: 1:8.3

Medium: Air Medium parameters used:  $\sigma = 0$  S/m,  $\epsilon_r = 1$ ;  $\rho = 1000$  kg/m<sup>3</sup>

Ambient Temperature : 23.4 °C

### DASY5 Configuration

- Probe: ER3DV6 - SN2358; ConvF(1, 1, 1); Calibrated: 2017/1/19;
- Sensor-Surface: (Fix Surface)
- Electronics: DAE4 Sn778; Calibrated: 2016/5/12
- Phantom: HAC Test Arch with AMCC; Type: SD HAC P01 BA;
- Measurement SW: DASY52, Version 52.8 (8); SEMCAD X Version 14.6.10 (7373)

### E Scan - ER3D: 15 mm from Probe Center to the Device/Hearing Aid Compatibility

**Test (101x101x1):** Interpolated grid: dx=0.5000 mm, dy=0.5000 mm

Device Reference Point: 0, 0, -6.3 mm

Reference Value = 26.18 V/m; Power Drift = -0.13 dB

Applied MIF = 3.63 dB

RF audio interference level = 29.28 dBV/m

**Emission category: M4**

MIF scaled E-field

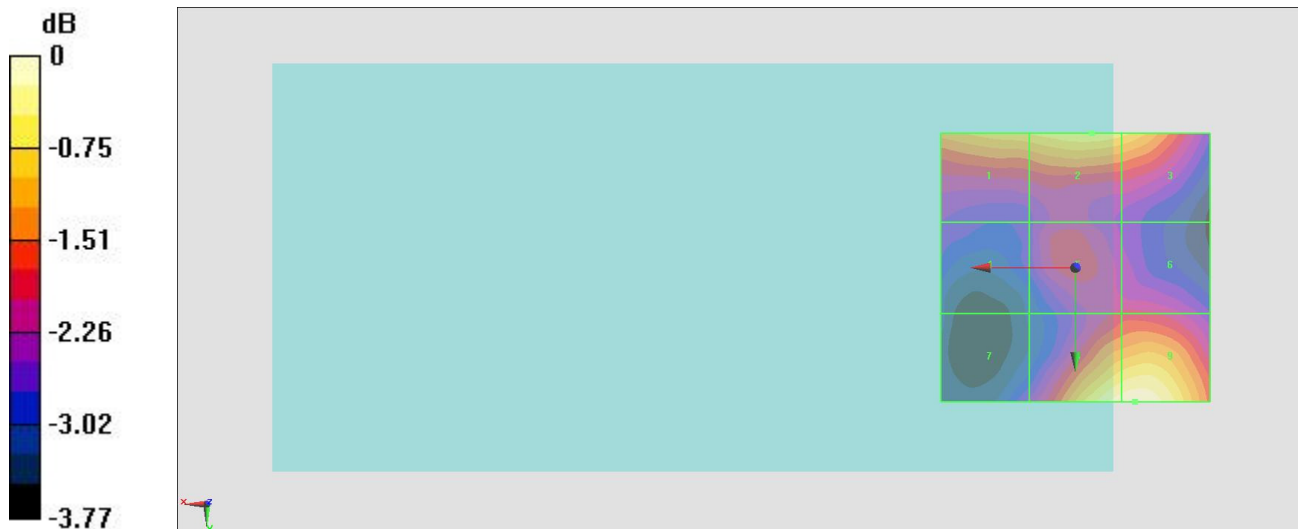
Grid 1 <b>M4</b> <b>28.55 dBV/m</b>	Grid 2 <b>M4</b> <b>28.79 dBV/m</b>	Grid 3 <b>M4</b> <b>28.64 dBV/m</b>
Grid 4 <b>M4</b> <b>26.78 dBV/m</b>	Grid 5 <b>M4</b> <b>27.46 dBV/m</b>	Grid 6 <b>M4</b> <b>27.38 dBV/m</b>
Grid 7 <b>M4</b> <b>26.89 dBV/m</b>	Grid 8 <b>M4</b> <b>29.22 dBV/m</b>	Grid 9 <b>M4</b> <b>29.28 dBV/m</b>

**Cursor:**

Total = 29.28 dBV/m

E Category: M4

Location: -11, 25, 8.7 mm



0 dB = 29.12 V/m = 29.28 dBV/m

### #07\_HAC\_E\_LTE Band 38\_20M\_QPSK\_1\_0\_Ch37850

Communication System: LTE-TDD (SC-FDMA, 1 RB, 20 MHz, QPSK); Frequency: 2580 MHz; Duty Cycle: 1:1.59

Medium: Air Medium parameters used:  $\sigma = 0$  S/m,  $\epsilon_r = 1$ ;  $\rho = 1000$  kg/m<sup>3</sup>

Ambient Temperature : 23.4 °C

#### DASY5 Configuration

- Probe: ER3DV6 - SN2358; ConvF(1, 1, 1); Calibrated: 2017/1/19;
- Sensor-Surface: (Fix Surface)
- Electronics: DAE4 Sn778; Calibrated: 2016/5/12
- Phantom: HAC Test Arch with AMCC; Type: SD HAC P01 BA;
- Measurement SW: DASY52, Version 52.8 (8); SEMCAD X Version 14.6.10 (7373)

#### E Scan - ER3D: 15 mm from Probe Center to the Device/Hearing Aid Compatibility Test (101x101x1): Interpolated grid: dx=0.5000 mm, dy=0.5000 mm

Device Reference Point: 0, 0, -6.3 mm

Reference Value = 22.18 V/m; Power Drift = -0.13 dB

Applied MIF = -1.62 dB

RF audio interference level = 23.97 dBV/m

Emission category: **M4**

MIF scaled E-field

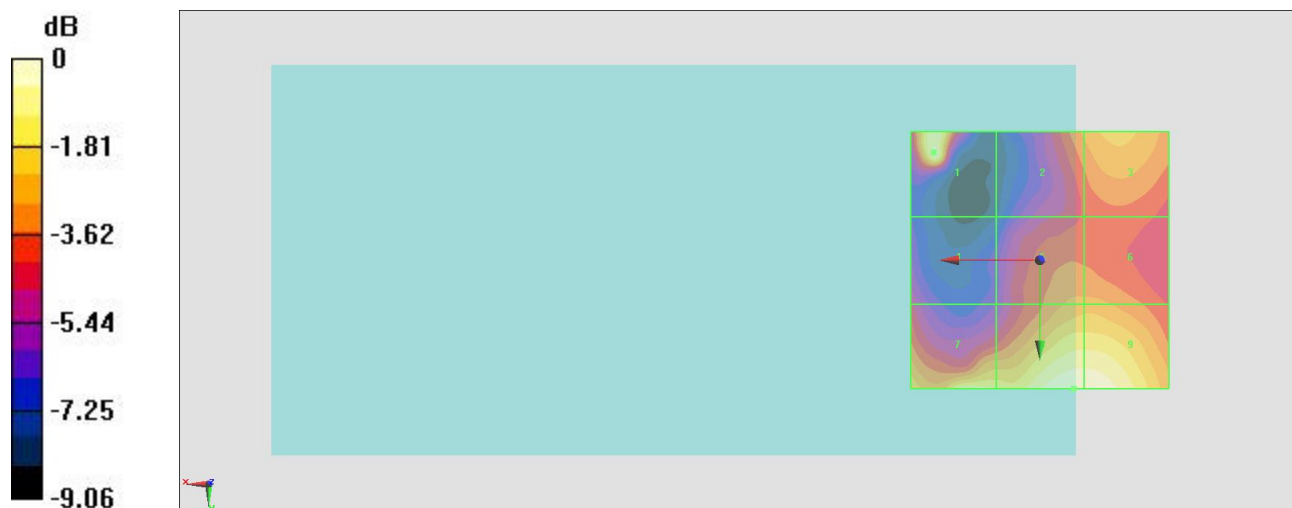
Grid 1 <b>M4</b> <b>23.56 dBV/m</b>	Grid 2 <b>M4</b> <b>21.08 dBV/m</b>	Grid 3 <b>M4</b> <b>21.73 dBV/m</b>
Grid 4 <b>M4</b> <b>19.37 dBV/m</b>	Grid 5 <b>M4</b> <b>21.23 dBV/m</b>	Grid 6 <b>M4</b> <b>21.24 dBV/m</b>
Grid 7 <b>M4</b> <b>23.27 dBV/m</b>	Grid 8 <b>M4</b> <b>23.97 dBV/m</b>	Grid 9 <b>M4</b> <b>23.93 dBV/m</b>

**Cursor:**

Total = 23.97 dBV/m

E Category: M4

Location: -6.5, 25, 8.7 mm



0 dB = 15.80 V/m = 23.97 dBV/m

### #08\_HAC\_E\_LTE Band 38\_20M\_QPSK\_1\_0\_Ch38000

Communication System: LTE-TDD (SC-FDMA, 1 RB, 20 MHz, QPSK); Frequency: 2595 MHz; Duty Cycle: 1:1.59

Medium: Air Medium parameters used:  $\sigma = 0$  S/m,  $\epsilon_r = 1$ ;  $\rho = 1000$  kg/m<sup>3</sup>

Ambient Temperature : 23.4 °C

#### DASY5 Configuration

- Probe: ER3DV6 - SN2358; ConvF(1, 1, 1); Calibrated: 2017/1/19;
- Sensor-Surface: (Fix Surface)
- Electronics: DAE4 Sn778; Calibrated: 2016/5/12
- Phantom: HAC Test Arch with AMCC; Type: SD HAC P01 BA;
- Measurement SW: DASY52, Version 52.8 (8); SEMCAD X Version 14.6.10 (7373)

#### E Scan - ER3D: 15 mm from Probe Center to the Device/Hearing Aid Compatibility Test (101x101x1): Interpolated grid: dx=0.5000 mm, dy=0.5000 mm

Device Reference Point: 0, 0, -6.3 mm

Reference Value = 20.42 V/m; Power Drift = 0.02 dB

Applied MIF = -1.62 dB

RF audio interference level = 24.08 dBV/m

**Emission category: M4**

MIF scaled E-field

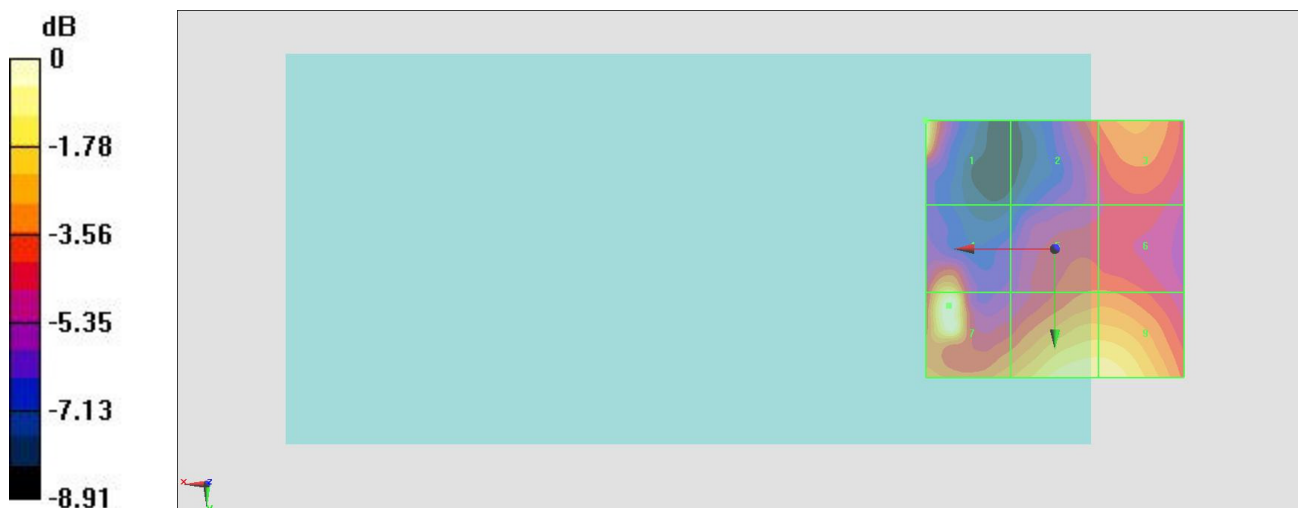
Grid 1 <b>M4</b> <b>24.01 dBV/m</b>	Grid 2 <b>M4</b> <b>20.59 dBV/m</b>	Grid 3 <b>M4</b> <b>21.25 dBV/m</b>
Grid 4 <b>M4</b> <b>22.84 dBV/m</b>	Grid 5 <b>M4</b> <b>20.63 dBV/m</b>	Grid 6 <b>M4</b> <b>20.63 dBV/m</b>
Grid 7 <b>M4</b> <b>24.08 dBV/m</b>	Grid 8 <b>M4</b> <b>23.53 dBV/m</b>	Grid 9 <b>M4</b> <b>23.52 dBV/m</b>

**Cursor:**

Total = 24.08 dBV/m

E Category: M4

Location: 20.5, 11, 8.7 mm



0 dB = 15.99 V/m = 24.08 dBV/m

### #09\_HAC\_E\_LTE Band 38\_20M\_QPSK\_1\_0\_Ch38150

Communication System: LTE-TDD (SC-FDMA, 1 RB, 20 MHz, QPSK); Frequency: 2610 MHz; Duty Cycle: 1:1.59

Medium: Air Medium parameters used:  $\sigma = 0$  S/m,  $\epsilon_r = 1$ ;  $\rho = 1000$  kg/m<sup>3</sup>

Ambient Temperature : 23.4 °C

#### DASY5 Configuration

- Probe: ER3DV6 - SN2358; ConvF(1, 1, 1); Calibrated: 2017/1/19;
- Sensor-Surface: (Fix Surface)
- Electronics: DAE4 Sn778; Calibrated: 2016/5/12
- Phantom: HAC Test Arch with AMCC; Type: SD HAC P01 BA;
- Measurement SW: DASY52, Version 52.8 (8); SEMCAD X Version 14.6.10 (7373)

#### E Scan - ER3D: 15 mm from Probe Center to the Device/Hearing Aid Compatibility Test (101x101x1): Interpolated grid: dx=0.5000 mm, dy=0.5000 mm

Device Reference Point: 0, 0, -6.3 mm

Reference Value = 19.80 V/m; Power Drift = 0.03 dB

Applied MIF = -1.62 dB

RF audio interference level = 23.58 dBV/m

**Emission category: M4**

MIF scaled E-field

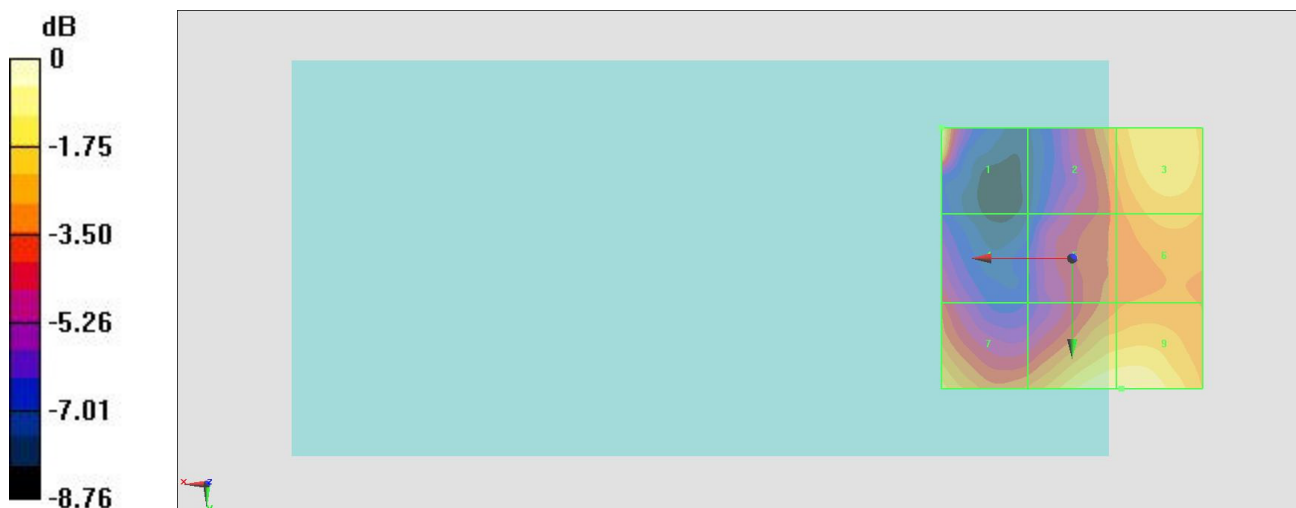
Grid 1 <b>M4</b> <b>23.58 dBV/m</b>	Grid 2 <b>M4</b> <b>21.36 dBV/m</b>	Grid 3 <b>M4</b> <b>22.4 dBV/m</b>
Grid 4 <b>M4</b> <b>19.71 dBV/m</b>	Grid 5 <b>M4</b> <b>20.49 dBV/m</b>	Grid 6 <b>M4</b> <b>21.52 dBV/m</b>
Grid 7 <b>M4</b> <b>22.13 dBV/m</b>	Grid 8 <b>M4</b> <b>23.07 dBV/m</b>	Grid 9 <b>M4</b> <b>23.08 dBV/m</b>

**Cursor:**

Total = 23.58 dBV/m

E Category: M4

Location: 25, -25, 8.7 mm



0 dB = 15.09 V/m = 23.57 dBV/m

### #10\_HAC\_E\_LTE Band 41\_20M\_QPSK\_1\_0\_Ch40240

Communication System: LTE-TDD (SC-FDMA, 1 RB, 20 MHz, QPSK); Frequency: 2555 MHz; Duty Cycle: 1:1.59

Medium: Air Medium parameters used:  $\sigma = 0$  S/m,  $\epsilon_r = 1$ ;  $\rho = 1000$  kg/m<sup>3</sup>

Ambient Temperature : 23.4 °C

#### DASY5 Configuration

- Probe: ER3DV6 - SN2358; ConvF(1, 1, 1); Calibrated: 2017/1/19;
- Sensor-Surface: (Fix Surface)
- Electronics: DAE4 Sn778; Calibrated: 2016/5/12
- Phantom: HAC Test Arch with AMCC; Type: SD HAC P01 BA;
- Measurement SW: DASY52, Version 52.8 (8); SEMCAD X Version 14.6.10 (7373)

#### E Scan - ER3D: 15 mm from Probe Center to the Device/Hearing Aid Compatibility Test (101x101x1): Interpolated grid: dx=0.5000 mm, dy=0.5000 mm

Device Reference Point: 0, 0, -6.3 mm

Reference Value = 21.68 V/m; Power Drift = -0.05 dB

Applied MIF = -1.62 dB

RF audio interference level = 24.78 dBV/m

**Emission category: M4**

MIF scaled E-field

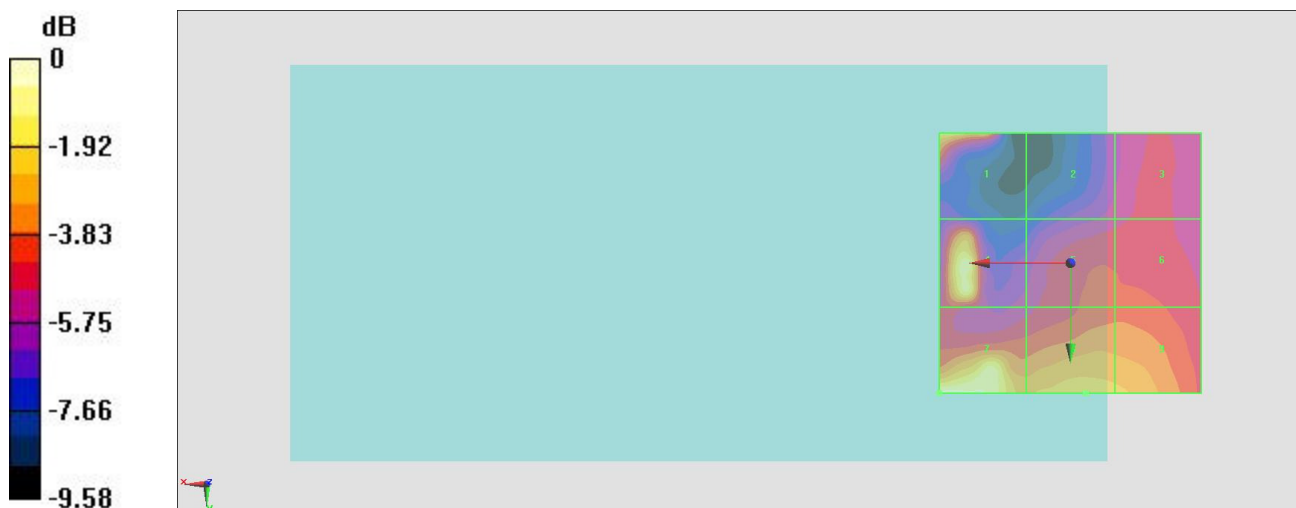
Grid 1 <b>M4</b> <b>23.37 dBV/m</b>	Grid 2 <b>M4</b> <b>19.45 dBV/m</b>	Grid 3 <b>M4</b> <b>19.91 dBV/m</b>
Grid 4 <b>M4</b> <b>24 dBV/m</b>	Grid 5 <b>M4</b> <b>20.7 dBV/m</b>	Grid 6 <b>M4</b> <b>20.71 dBV/m</b>
Grid 7 <b>M4</b> <b>24.78 dBV/m</b>	Grid 8 <b>M4</b> <b>22.68 dBV/m</b>	Grid 9 <b>M4</b> <b>22.47 dBV/m</b>

**Cursor:**

Total = 24.78 dBV/m

E Category: M4

Location: 25, 25, 8.7 mm



0 dB = 17.34 V/m = 24.78 dBV/m

### #11\_HAC\_E\_LTE Band 41\_20M\_QPSK\_1\_0\_Ch40500

Communication System: LTE-TDD (SC-FDMA, 1 RB, 20 MHz, QPSK); Frequency: 2581 MHz; Duty Cycle: 1:1.59

Medium: Air Medium parameters used:  $\sigma = 0$  S/m,  $\epsilon_r = 1$ ;  $\rho = 1000$  kg/m<sup>3</sup>

Ambient Temperature : 23.4 °C

#### DASY5 Configuration

- Probe: ER3DV6 - SN2358; ConvF(1, 1, 1); Calibrated: 2017/1/19;
- Sensor-Surface: (Fix Surface)
- Electronics: DAE4 Sn778; Calibrated: 2016/5/12
- Phantom: HAC Test Arch with AMCC; Type: SD HAC P01 BA;
- Measurement SW: DASY52, Version 52.8 (8); SEMCAD X Version 14.6.10 (7373)

#### E Scan - ER3D: 15 mm from Probe Center to the Device/Hearing Aid Compatibility Test (101x101x1): Interpolated grid: dx=0.5000 mm, dy=0.5000 mm

Device Reference Point: 0, 0, -6.3 mm

Reference Value = 20.19 V/m; Power Drift = 0.01 dB

Applied MIF = -1.62 dB

RF audio interference level = 23.96 dBV/m

**Emission category: M4**

MIF scaled E-field

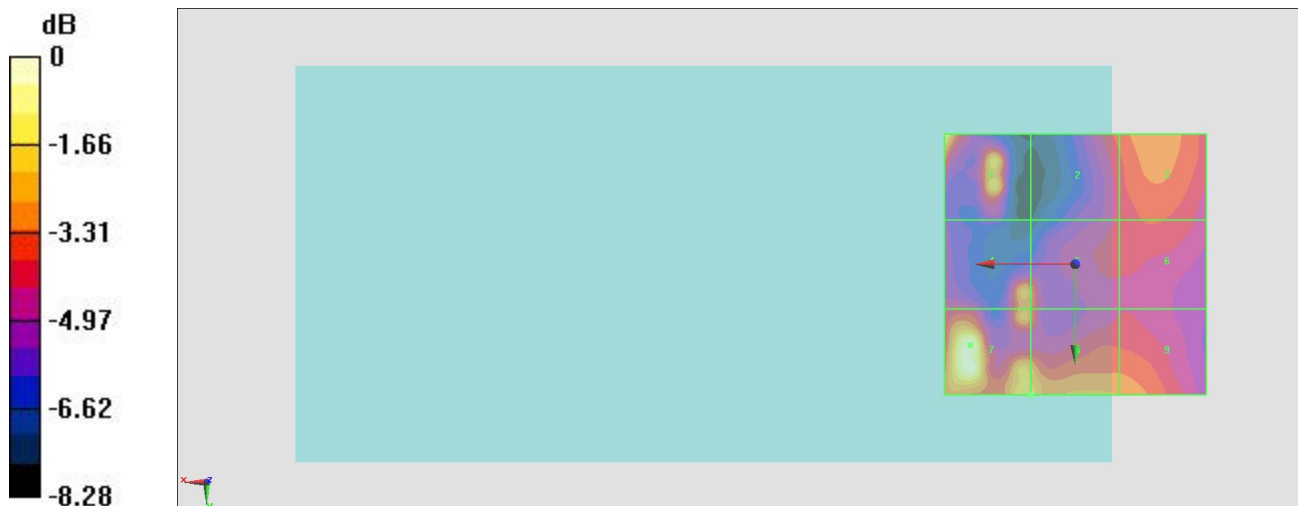
Grid 1 <b>M4</b> <b>23.85 dBV/m</b>	Grid 2 <b>M4</b> <b>20.38 dBV/m</b>	Grid 3 <b>M4</b> <b>20.95 dBV/m</b>
Grid 4 <b>M4</b> <b>21.48 dBV/m</b>	Grid 5 <b>M4</b> <b>20.99 dBV/m</b>	Grid 6 <b>M4</b> <b>20.17 dBV/m</b>
Grid 7 <b>M4</b> <b>23.96 dBV/m</b>	Grid 8 <b>M4</b> <b>22.16 dBV/m</b>	Grid 9 <b>M4</b> <b>21.2 dBV/m</b>

**Cursor:**

Total = 23.96 dBV/m

E Category: M4

Location: 20, 15.5, 8.7 mm



0 dB = 15.78 V/m = 23.96 dBV/m

## #12\_HAC\_E\_LTE Band 41\_20M\_QPSK\_1\_0\_Ch40770

Communication System: LTE-TDD (SC-FDMA, 1 RB, 20 MHz, QPSK); Frequency: 2608 MHz; Duty Cycle: 1:1.59

Medium: Air Medium parameters used:  $\sigma = 0$  S/m,  $\epsilon_r = 1$ ;  $\rho = 1000$  kg/m<sup>3</sup>

Ambient Temperature : 23.4 °C

### DASY5 Configuration

- Probe: ER3DV6 - SN2358; ConvF(1, 1, 1); Calibrated: 2017/1/19;
- Sensor-Surface: (Fix Surface)
- Electronics: DAE4 Sn778; Calibrated: 2016/5/12
- Phantom: HAC Test Arch with AMCC; Type: SD HAC P01 BA;
- Measurement SW: DASY52, Version 52.8 (8); SEMCAD X Version 14.6.10 (7373)

### E Scan - ER3D: 15 mm from Probe Center to the Device/Hearing Aid Compatibility Test (101x101x1): Interpolated grid: dx=0.5000 mm, dy=0.5000 mm

Device Reference Point: 0, 0, -6.3 mm

Reference Value = 19.22 V/m; Power Drift = 0.03 dB

Applied MIF = -1.62 dB

RF audio interference level = 25.21 dBV/m

**Emission category: M4**

MIF scaled E-field

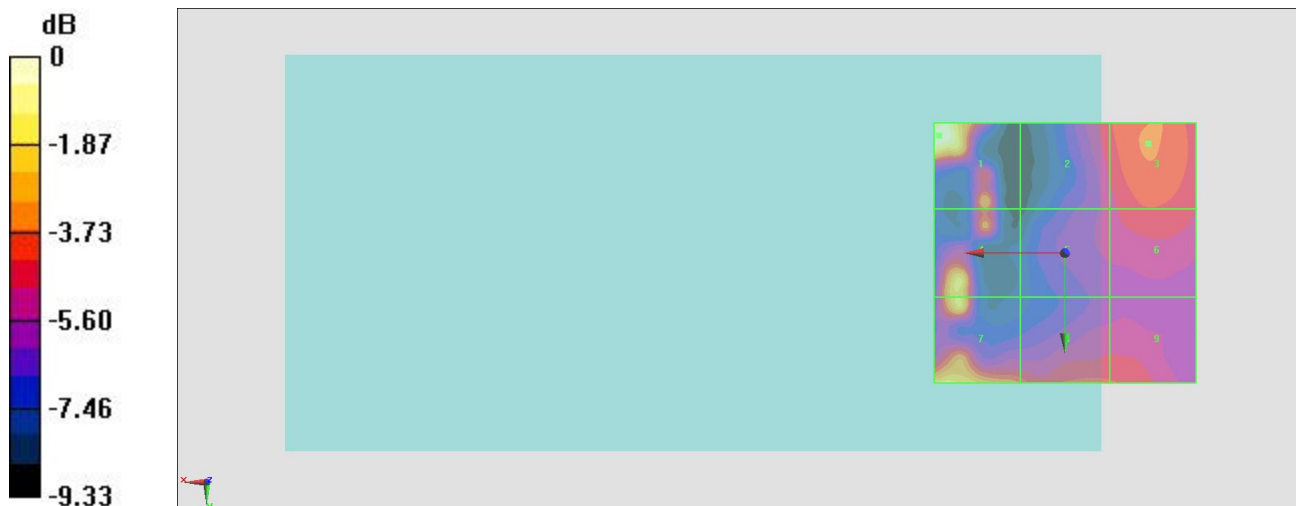
Grid 1 <b>M4</b> <b>25.21 dBV/m</b>	Grid 2 <b>M4</b> <b>20.78 dBV/m</b>	Grid 3 <b>M4</b> <b>21.57 dBV/m</b>
Grid 4 <b>M4</b> <b>23.61 dBV/m</b>	Grid 5 <b>M4</b> <b>19.99 dBV/m</b>	Grid 6 <b>M4</b> <b>20.84 dBV/m</b>
Grid 7 <b>M4</b> <b>23.89 dBV/m</b>	Grid 8 <b>M4</b> <b>21.51 dBV/m</b>	Grid 9 <b>M4</b> <b>20.97 dBV/m</b>

**Cursor:**

Total = 25.21 dBV/m

E Category: M4

Location: 24, -22.5, 8.7 mm



0 dB = 18.21 V/m = 25.21 dBV/m

### #13\_HAC\_E\_LTE Band 41\_20M\_QPSK\_1\_0\_Ch41140

Communication System: LTE-TDD (SC-FDMA, 1 RB, 20 MHz, QPSK); Frequency: 2645 MHz; Duty Cycle: 1:1.59

Medium: Air Medium parameters used:  $\sigma = 0$  S/m,  $\epsilon_r = 1$ ;  $\rho = 1000$  kg/m<sup>3</sup>

Ambient Temperature : 23.4 °C

#### DASY5 Configuration

- Probe: ER3DV6 - SN2358; ConvF(1, 1, 1); Calibrated: 2017/1/19;
- Sensor-Surface: (Fix Surface)
- Electronics: DAE4 Sn778; Calibrated: 2016/5/12
- Phantom: HAC Test Arch with AMCC; Type: SD HAC P01 BA;
- Measurement SW: DASY52, Version 52.8 (8); SEMCAD X Version 14.6.10 (7373)

#### E Scan - ER3D: 15 mm from Probe Center to the Device/Hearing Aid Compatibility Test (101x101x1): Interpolated grid: dx=0.5000 mm, dy=0.5000 mm

Device Reference Point: 0, 0, -6.3 mm

Reference Value = 19.07 V/m; Power Drift = 0.08 dB

Applied MIF = -1.62 dB

RF audio interference level = 27.03 dBV/m

**Emission category: M4**

MIF scaled E-field

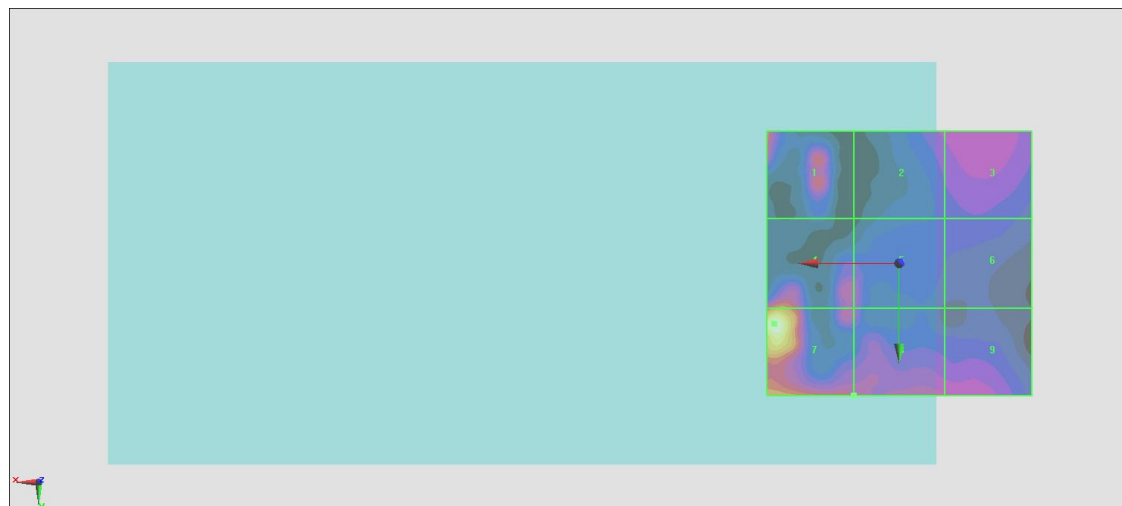
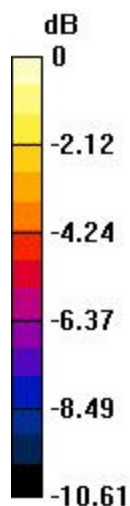
Grid 1 <b>M4</b> <b>23.34 dBV/m</b>	Grid 2 <b>M4</b> <b>20.15 dBV/m</b>	Grid 3 <b>M4</b> <b>20.6 dBV/m</b>
Grid 4 <b>M4</b> <b>23.35 dBV/m</b>	Grid 5 <b>M4</b> <b>20.94 dBV/m</b>	Grid 6 <b>M4</b> <b>19.19 dBV/m</b>
Grid 7 <b>M4</b> <b>27.03 dBV/m</b>	Grid 8 <b>M4</b> <b>21.5 dBV/m</b>	Grid 9 <b>M4</b> <b>20.71 dBV/m</b>

**Cursor:**

Total = 27.03 dBV/m

E Category: M4

Location: 23.5, 11.5, 8.7 mm



0 dB = 22.46 V/m = 27.03 dBV/m