



Exhibit 11: Class II Permissive Change SAR Test Report IHDT56EX1

**Date of test:** 08 – 10 November, 2004  
**Date of Report:** 17 November, 2004

**Laboratory:** Motorola Personal Communications Sector Product Safety & Compliance Laboratory  
 600 N. US Highway 45  
 Room: MW113  
 Libertyville, Illinois 60048

**Test Responsible:** Albert Patapack  
 Senior Staff Engineer

**Accreditation:** This laboratory is accredited to ISO/IEC 17025-1999 to perform the following tests:



<p><u>Tests:</u>                  Electromagnetic Specific Absorption Rate</p> <p>Simulated Tissue Preparation                  RF Power Measurement</p>	<p><u>Procedures:</u>                  ANSI/IEEE C95.1-1992, 1999                  (SAR) IEEE C95.3-1991                  IEEE P1528 (<i>DRAFT</i>)                  FCC OET Bulletin 65 (<i>including Supplements A, B, C</i>)                  Australian Communications Authority Radio                  Communications (Electromagnetic Radiation – Human                  Exposure) Standard 1999                  CENELEC EN 50361 (2001)                  APP-0247                  DOI-0876, 0900, 0902, 0904, 0915</p>
--	---

On the following products or types of products:  
 Wireless Communications Devices (Examples): Two Way Radios; Portable Phones (including Cellular, Licensed Non-Broadcast and PCS); Low Frequency Readers; and Pagers

A2LA certificate #1651-01

**Statement of Compliance:** Motorola declares under its sole responsibility that portable cellular telephone FCC ID IHDT56EX1 to which this declaration relates, is in conformity with the appropriate General Population/Uncontrolled RF exposure standards, recommendations and guidelines (FCC 47 CFR §2.1093). It also declares that the product was tested in accordance with the appropriate measurement standards, guidelines and recommended practices. Any deviations from these standards, guidelines and recommended practices are noted below:

(none)

©Motorola, Inc. 2004

This test report shall not be reproduced except in full, without written approval of the laboratory.

The results and statements contained herein relate only to the items tested. The names of individuals involved may be mentioned only in connection with the statements or results from this report.

Motorola encourages all feedback, both positive and negative, on this test report.

**Table of Contents**

**1. INTRODUCTION .....3**

**2. DESCRIPTION OF THE DEVICE UNDER TEST.....3**

**2.1 Antenna description .....3**

**2.2 Device description.....3**

**3. TEST EQUIPMENT USED.....3**

**3.1 Dosimetric System .....3**

**3.2 Additional Equipment.....4**

**4. ELECTRICAL PARAMETERS OF THE TISSUE SIMULATING LIQUID .....4**

**5. SYSTEM ACCURACY VERIFICATION.....5**

**6. TEST RESULTS.....6**

**6.1 Head Adjacent Test Results.....6**

**6.2 Body Worn Test Results .....8**

**APPENDIX 1: SAR DISTRIBUTION COMPARISON FOR SYSTEM ACCURACY VERIFICATION .....10**

**APPENDIX 2: SAR DISTRIBUTION PLOTS FOR PHANTOM HEAD ADJACENT USE .....11**

**APPENDIX 3: SAR DISTRIBUTION PLOTS FOR BODY WORN CONFIGURATION .....12**

**APPENDIX 4: PROBE CALIBRATION CERTIFICATE .....14**

**APPENDIX 5: DIPOLE CHARACTERIZATION CERTIFICATE .....15**

**APPENDIX 6: MEASUREMENT UNCERTAINTY BUDGET.....16**

**APPENDIX 7: PHOTOGRAPHS OF DEVICE UNDER TEST.....19**

**1 Introduction**

The Motorola Personal Communications Sector Product Safety Laboratory has performed measurements of the maximum potential exposure to the user of portable cellular phone (FCC ID IHDT56EX1). The Specific Absorption Rate (SAR) of this product was measured. The portable cellular phone was tested in accordance with FCC OET Bulletin 65 Supplement C 01-01.

**2 Description of the Device Under Test**

**2.1 Antenna description**

<b>Type</b>	Internal Antenna	
<b>Location</b>	Back of Phone	
<b>Dimensions</b>	Length	20mm
	Width	40mm
<b>Configuration</b>	FICA Antenna	

**2.2 Device description**

<b>FCC ID Number</b>	<b>IHDT56EX1</b>	
<b>Serial number</b>	Unit2	
<b>Mode(s) of Operation</b>	GSM 850	GSM 1900
<b>Modulation Mode(s)</b>	GSM	GSM
<b>Target Value for Maximum Output Power Setting</b>	32.30dBm	30.00dBm
<b>Duty Cycle</b>	1:8	1:8
<b>Transmitting Frequency Rang(s)</b>	824.20 - 848.80 MHz	1850.20 – 1909.80 MHz
<b>Device Category</b>	Portable	
<b>RF Exposure Limits</b>	General Population / Uncontrolled	

**3 Test Equipment Used**

**3.1 Dosimetric System**

The Motorola Personal Communications Sector Product Safety & Compliance Laboratory utilizes a Dosimetric Assessment System (Dasy3™ v3.1d and/or DASY4™ v4.4) manufactured by Schmid & Partner Engineering AG (SPEAG™), of Zurich Switzerland. All the SAR measurements are taken within a shielded enclosure. The overall RSS uncertainty of the measurement system is ±11.7% (K=1) with an expanded uncertainty of ±23.0% (K=2). The measurement uncertainty budget is given in Appendix 6. Per IEEE 1528, this uncertainty budget is applicable to the SAR range of 0.4 W/kg to 10 W/kg. The list of calibrated equipment used for the measurements is shown below.

Description	Serial Number	Cal Due Date
DASY3 DAE V1	440	09-Feb-05
	398	16-Feb-05
E-Field Probe ET3DV6	1397	21-May-05
	1514	22-Jul-05
Dipole Validation Kit, D900V2	91	2-Apr-05
	96	2-Apr-05
S.A.M. Phantom used for 850MHz	TP-1131	
	TP-1005	
Dipole Validation Kit, D1800V2	277TR	2-Apr-05
S.A.M. Phantom used for 1900MHz	TP-1250	

### 3.2 Additional Equipment

Description	Serial Number	Cal Due Date
Signal Generator HP8648C	3847A04822	06-Feb-05
	3847A04832	03-Sept-05
Power Meter E4419B	GB39511090	05-Apr-05
	GB39511086	05-Apr-05
Power Sensor #1 - E9301A	US39210916	09-Sept-05
	US39210915	16-Sept-05
Power Sensor #2 - E9301A	US39210930	21-Jul-05
	US39210929	21-Jul-05
Network Analyzer HP8753ES	US39171846	03-Sept-05
Dielectric Probe Kit HP85070B	US99360074	N/A

## 4 Electrical parameters of the tissue simulating liquid

Prior to conducting SAR measurements, the relative permittivity,  $\epsilon_r$ , and the conductivity,  $\sigma$ , of the tissue simulating liquids were measured with the HP85070 Dielectric Probe Kit. These values, along with the temperature of the tissue simulate are shown in the table below. The recommended limits for maximum permittivity and minimum conductivity are also shown. These come from the Federal Communication Commission, OET Bulletin 65 Supplement C 01-01. It is seen that the measured parameters are satisfactory for compliance testing.

f (MHz)	Tissue type	Limits / Measured	Dielectric Parameters		
			$\epsilon_r$	$\sigma$ (S/m)	Temp (°C)
835	Head	Measured, 08-Nov-04	41.8	0.91	19.6
		Measured, 10-Nov-04	42.4	0.91	19.5
		Recommended Limits	41.5 ±5%	0.90 ±5%	18-25
	Body	Measured, 08-Nov-04	54.0	0.98	20.0
Recommended Limits		55.2 ±5%	0.97 ±5%	18-25	
1880	Head	Measured, 08-Nov-04	38.1	1.47	19.8
		Recommended Limits	40.0 ±5%	1.40 ±5%	18-25
	Body	Measured, 08-Nov-04	50.8	1.59	19.7
		Recommended Limits	53.3 ±5%	1.52 ±5%	18-25

The list of ingredients and the percent composition used for the tissue simulates are indicated in the table below.

Ingredient	800MHz Head	800MHz Body	1900MHz Head	1900MHz Body
Sugar	57.0	44.9	--	30.80
DGBE	--	--	47.0	--
Water	40.45	53.06	52.8	68.91
Salt	1.45	0.94	0.2	0.29
HEC	1.0	1.0	--	--
Bact.	0.1	0.1	--	--

### 5 System Accuracy Verification

A system accuracy verification of the DASY3 was performed using the measurement equipment listed in Section 3.1. The daily system accuracy verification occurs within center section of the SAM phantom.

A SAR measurement was performed to see if the measured SAR was within +/- 10% from the target SAR indicated on the dipole certification sheet. These tests were done at 900MHz and/or 1800MHz. These frequencies are within 100MHz of the mid-band frequency of the test device. This is within the allowable window given in Supplement C 01-01 Appendix D System Verification section item #5. The test was conducted on the same days as the measurement of the DUT. Recommended limits for maximum permittivity, minimum conductivity are shown in the table below. These come from the Federal Communication Commission, OET Bulletin 65 Supplement C 01-01. The obtained results from the system accuracy verification are displayed in the table below. The distributions of SAR compare well with those of the reference measurements (see Appendix 1). The tissue stimulant depth was verified to be 15.0cm ±0.5cm. Z-axis scans showing the SAR penetration are also included in Appendix 1. SAR values are normalized to 1W forward power delivered to the dipole.

f (MHz)	Description	SAR (W/kg), 1gram	Dielectric Parameters		Ambient Temp (°C)	Tissue Temp (°C)
			$\epsilon_r$	$\sigma$ (S/m)		
900	Measured, 08-Nov-04	11.66	41.0	0.97	20.0	19.6
	Measured, 10-Nov-04	11.03	41.7	0.98	20.0	19.6
	Recommended Limits	11.4	41.5 ±5%	0.97 ±5%	18-25	18-25
1800	Measured, 08-Nov-04	41.70	39.0	1.39	20.0	19.2
	Recommended Limits	40.7	40.0 ±5%	1.4 ±5%	18-25	18-25

The following probe conversion factors were used on the E-Field probe(s) used for the system accuracy verification measurements:

Description	Serial Number	f (MHz)	Conversion Factor	Cal Cert pg #
E-Field Probe ET3DV6	SN1397	900	6.1	7 of 8
		1800	5.09	7 of 8
	SN1514	900	6.08	7 of 8
		1800	5.03	7 of 8

**6 Test Results**

The test sample was operated in a test mode that allows control of the transmitter without the need to place actual phone calls. For the purposes of this test the unit is commanded to test mode and manually set to the proper channel, transmitter power level and transmit mode of operation. The phone was tested in the configurations stipulated in OET Bulletin 65 Supplement C 01-01. Motorola also followed the requirements in Supplement. C / Appendix D: SAR Measurement Procedures, section titled “*Devices Operating Next To A Person’s Ear* “. These directions state “The device should be tested on the left and right side of the head phantom in the “Cheek/Touch” and “Ear/Tilt” positions. When applicable, each configuration should be tested with the antenna in its fully extended and fully retracted positions. These test configurations should be tested at the high, middle and low frequency channels of each operating mode; for example, AMPS, CDMA, and TDMA. If the SAR measured at the middle channel for each test configuration (left, right, Cheek/Touch, Tile/Ear, extended and retracted) is at least 2.0 dB lower than the SAR limit, testing at the high and low channels is optional for such test configuration(s).“

The DASY SAR measurement systems specified in section 3.1 were utilized within the intended operations as set by the SPEAG™ setup. The phone was positioned into the measurement configurations using the positioner supplied with the DASY SAR measurement system. The measured dielectric constant of the material used for the positioner is less than 2.9 and the loss tangent is less than 0.02 (± 30%) at 850MHz. The default settings for the “coarse” and “cube” scans were chosen and use for measurements. The grid spacing of the course scan was set to 15cm as shown in the SAR plots included in appendix 2 and 3. Please refer to the applicable DASY manuals for additional information on SAR scanning procedures and algorithms used.

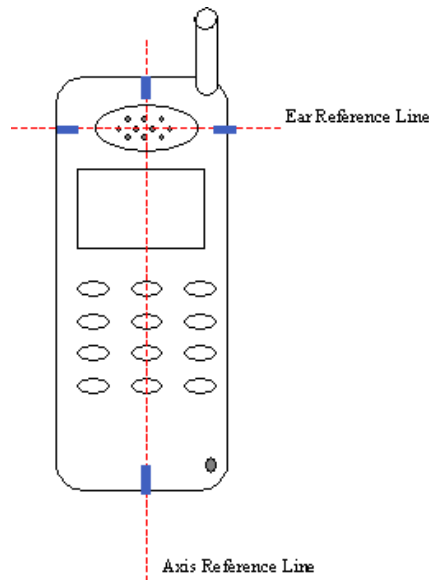
The Cellular Phone (FCC ID IHDT56EX1) has 920mAh SNN5749A as the only available battery option. This battery was used to do all of the SAR testing. The phone was placed in the SAR measurement system with a fully charged battery.

**6.1 Head Adjacent Test Results**

To aid in positioning repeatability, the ear reference line of the device and the axis reference line of the device have been physically added using a non-metallic marker.

- Per Figure 1, the "Ear Reference Line" is centered vertically through the center of the listening area (as defined by the speaker holes in the housing).
- The "Axis Reference Line" bisects the front surface of the device at its top and bottom edges.
- The intersection of these two lines defines the location of the "Ear Reference Point".

The lines drawn on the device extended to the outside edges, as shown in blue in the figure below, & wrap around the sides of the device.



The SAR results shown in tables 1 and 2 are maximum SAR values averaged over 1 gram of phantom tissue. Also shown are the measured conducted output powers, the temperature of the test facility during the test, the temperature of the tissue simulate after the test, the measured drift and the extrapolated SAR. The exact method of extrapolation is  $New\ SAR = Old\ SAR * 10^{(-drift/10)}$ . The SAR reported at the end of the measurement process by the DASY™ measurement system can be scaled up by the measured drift to determine the SAR at the beginning of the measurement process. This is the most conservative SAR because it corresponds to the average output power at the beginning of the SAR test. This extrapolation has been done because when the DUT is operating properly it may exhibit a slump in radiated power and SAR over time. This is verified by measuring the SAR drift after the test. The test conditions indicated as bold numbers in the following table are included in Appendix 2

The SAR measurements were performed using the SAM phantoms listed in section 3.1. Since same phantoms and tissue simulate are used for the system accuracy verification as the device SAR measurements, the Z-axis scans included in within Appendix 1 are applicable for verification of tissue simulate depth to be 15.0cm ±0.5cm. All other test conditions measured lower SAR values than those included in Appendix 2. Note that 800MHz digital mode SAR measurements were performed in accordance with Supplement C.

Note that, since the head adjacent SAR values for the 850Mhz and 1900Mhz bands were less than or equal to that previously reported, the SAR values for 850Mhz and 1900Mhz bands that are included in tables 1 and 2 are for reference only. This data has been included to show that the head adjacent SAR values for the 850Mhz and 1900Mhz bands did not significantly increase from that previously reported. As such, no 850Mhz band or 1900Mhz band SAR distribution plots for phantom head adjacent use have been included in Appendix 2 of this document. The 850Mhz band and 1900Mhz band SAR distribution plots for phantom head adjacent use that were included in Appendix 2 of the original filing report should still be considered to apply.

The following probe conversion factors were used on the E-Field probe(s) used for the head adjacent measurements:

Description	Serial Number	f (MHz)	Conversion Factor	Cal Cert pg #
E-Field Probe ET3DV6	SN1397	900	6.1	7 of 8
		1800	5.09	7 of 8
	SN1514	900	6.08	7 of 8
		1800	5.03	7 of 8

f (MHz)	Description	Conducted Output Power (dBm)	Cheek / Touch Position							
			Left Head				Right Head			
			Measured (W/kg)	Drift (dB)	Extrapolated (W/kg)	Simulate Temp (°C)	Measured (W/kg)	Drift (dB)	Extrapolated (W/kg)	Simulate Temp (°C)
Digital 850MHz	Channel 128	32.26	1.015	0.03	1.02	19.6	1.066	-0.01	1.07	19.6
	Channel 190	32.31	1.079	-0.05	1.09	19.6	1.147	-0.12	1.18	19.6
	Channel 251	32.28	0.902	-0.055	0.91	19.4	0.963	-0.39	0.97	19.2
Digital 1900MHz	Channel 512	30.02								
	Channel 661	29.99	0.203	-0.03	0.20	19.0	0.164	-0.03	0.17	19.0
	Channel 810	30.01								

**Table 1: SAR measurement results for the portable cellular telephone FCC ID IHDT56EX1 at highest possible output power. Measured against the head in the Cheek/Touch Position.**

f (MHz)	Description	Conducted Output Power (dBm)	15° Tilt Position							
			Left Head				Right Head			
			Measured (W/kg)	Drift (dB)	Extrapolated (W/kg)	Simulate Temp (°C)	Measured (W/kg)	Drift (dB)	Extrapolated (W/kg)	Simulate Temp (°C)
Digital 850MHz	Channel 128	32.26								
	Channel 190	32.31	0.702	-0.09	0.72	19.6	0.73	-0.01	0.73	19.6
	Channel 251	32.28								
Digital 1900MHz	Channel 512	30.02								
	Channel 661	29.99	0.192	-0.14	0.20	19.0	0.151	0.19	0.15	19.0
	Channel 810	30.01								

**Table 2: SAR measurement results for the portable cellular telephone FCC ID IHDT56EX1 at highest possible output power. Measured against the head in the 15° Tilt Position.**

### 6.2 Body Worn Test Results

The SAR results shown in table 3 are the maximum SAR values averaged over 1 gram of phantom tissue. Also shown are the measured conducted output powers, the temperature of the test facility during the test, the temperature of the tissue simulate after the test, the measured drift and the extrapolated SAR. The exact method of extrapolation is  $New\ SAR = Old\ SAR * 10^{(-drift/10)}$ . The SAR reported at the end of the measurement process by the DASY™ measurement system can be scaled up by the measured drift to determine the SAR at the beginning of the measurement process. This is the most conservative SAR because it corresponds to the average output power at the beginning of the SAR test. This extrapolation has been done because when the DUT is operating properly it may exhibit a slump in radiated power and SAR over time. This is verified by measuring the SAR drift after the test. The test conditions indicated as bold numbers in the following table are included in Appendix 3. Note that 800MHz digital mode SAR measurements were performed in accordance with OET Bulletin 65 Supplement C 01-01. All other test conditions measured lower SAR values than those included in Appendix 3.

A “flat” phantom was for the body-worn tests. This “flat” phantom is made out of 1” thick natural High Density Polyethylene with a thickness at the bottom equal to 2.0mm. It measures 52.7cm(long) x 26.7cm(wide) x 21.2cm(tall). The measured dielectric constant of the material used is less than 2.3 and the loss tangent is less than 0.0046 all the way up to 2.184GHz.

The tissue stimulant depth was verified to be 15.0cm ±0.5cm. The same device holder described in section 6 was used for positioning the phone. There are body worn Accessories available for this phone. The previous highest body worn SAR values were produced when testing without an accessory, with the back of the device to the bottom of the flat phantom, hence the device was tested per the supplement C testing guidelines for devices that do not have body worn accessories only with the back of the device to the bottom of the flat phantom. The phone was placed a maximum of 1 inch away from a flat phantom per the supplement C standard guidelines to perform SAR measurement. The cellular phone was tested with a headset connected to the device for all body-worn SAR measurements

Note that, since the 1900Mhz band body worn SAR values were less than or equal to that previously reported, the values included in table 3 are for reference only. This data has been included to show that the 1900Mhz band SAR values did not significantly increase from that previously reported. As such, no 1900Mhz band SAR distribution plots for body worn configuration have been included in Appendix 3 of this document. The 1900Mhz band SAR distribution plots for body worn configuration that were included in Appendix 3 of the original filing report should still be considered to apply.

The following probe conversion factors were used on the E-Field probe(s) used for the body worn measurements:

Description	Serial Number	f (MHz)	Conversion Factor	Cal Cert pg #
E-Field Probe ET3DV6	SN1514	900	5.87	7 of 8
		1800	4.46	7 of 8

f (MHz)	Description	Conducted Output Power (dBm)	Body Worn			
			Back of phone 15mm away from phantom			
			Measured (W/kg)	Drift (dB)	Extrapolated (W/kg)	Simulate Temp (°C)
Digital 850MHz	Channel 128	32.26				
	Channel 190	32.31	<b>0.741</b>	<b>-0.09</b>	<b>0.76</b>	<b>20.0</b>
	Channel 251	32.28				
Digital 1900MHz	Channel 512	30.02				
	Channel 661	29.99	0.292	-0.03	0.29	19.0
	Channel 810	30.01				

**Table 3: SAR measurement results for the portable cellular telephone FCC ID IHDT56EX1 at highest possible output power. Measured against the body.**

**Appendix 1**

**SAR distribution comparison for the system accuracy verification**

# Dipole 900 MHz

900 MHz System Performance Check / Dipole Sn# 96

PM1 Power = 199mW

Sim.Temp@meas=19.6°C Sim.Temp@SPC = 19.6°C Room Temp @ SPC = 20.0°C

R4 TP-1131 SUGAR SAM Expanded (Rev. 2)-9Jan03 Phantom; Flat Section; Position: (90°,90°); Frequency: 900 MHz

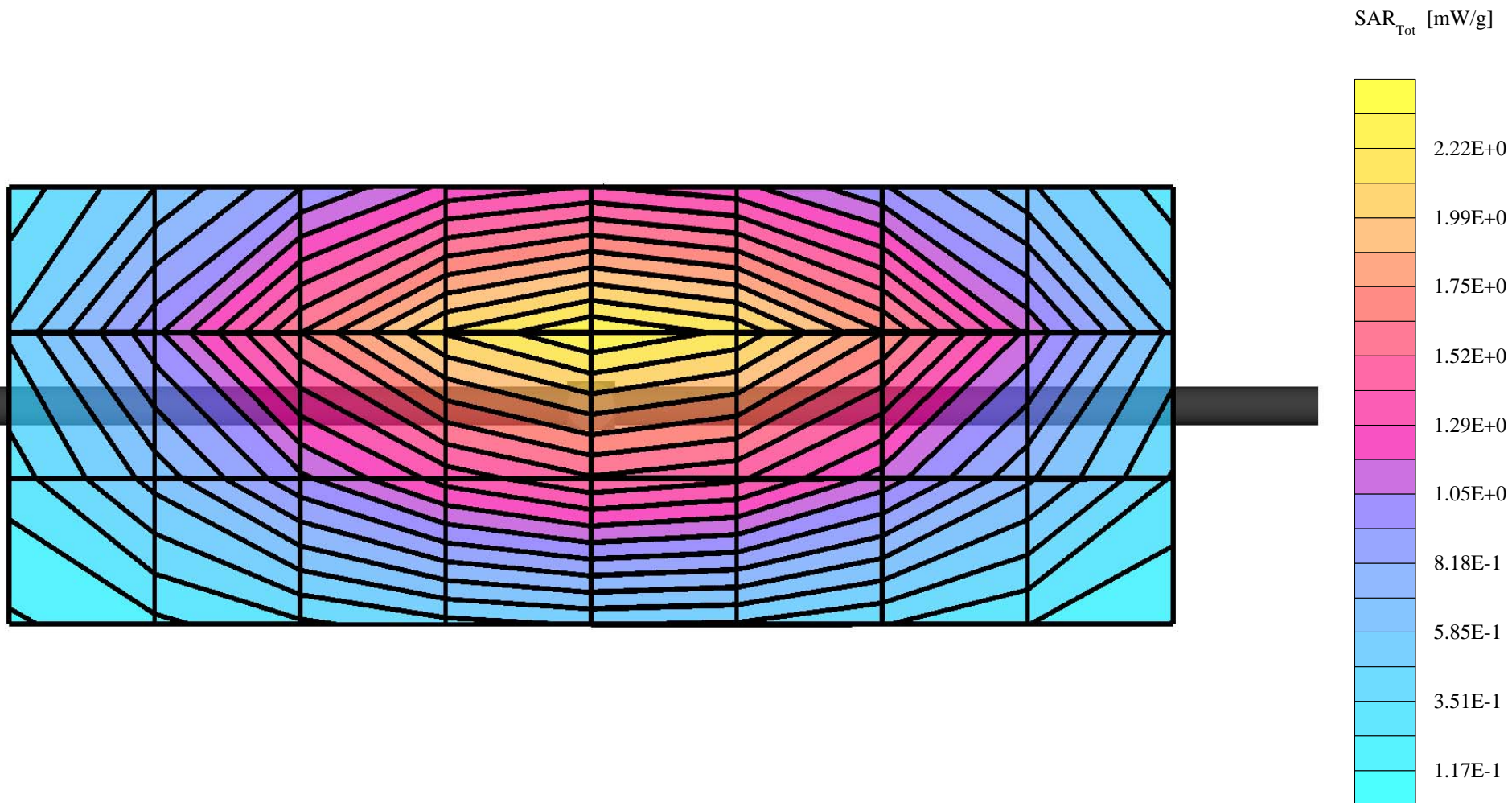
Probe: ET3DV6 - SN1514-VALADATION4; ConvF(6.08,6.08,6.08); Crest factor: 1.0; 900 MHz VALIDATION:  $\sigma = 0.97$  mho/m  $\epsilon_r = 41.0$   $\rho = 1.00$  g/cm<sup>3</sup>

Cubes (2): SAR (1g): 2.32 mW/g  $\pm 0.00$  dB, SAR (10g): 1.46 mW/g  $\pm 0.00$  dB, (Worst-case extrapolation)

Coarse: Dx = 15.0, Dy = 15.0, Dz = 10.0

Penetration depth: 11.5 (10.7, 12.6) [mm]

Powerdrift: -0.03 dB



# Dipole 900 MHz

900 MHz System Performance Check / Dipole Sn# 96

PM1 Power = 199mW

Sim.Temp@meas=19.6°C Sim.Temp@SPC = 19.6°C Room Temp @ SPC = 20.0°C

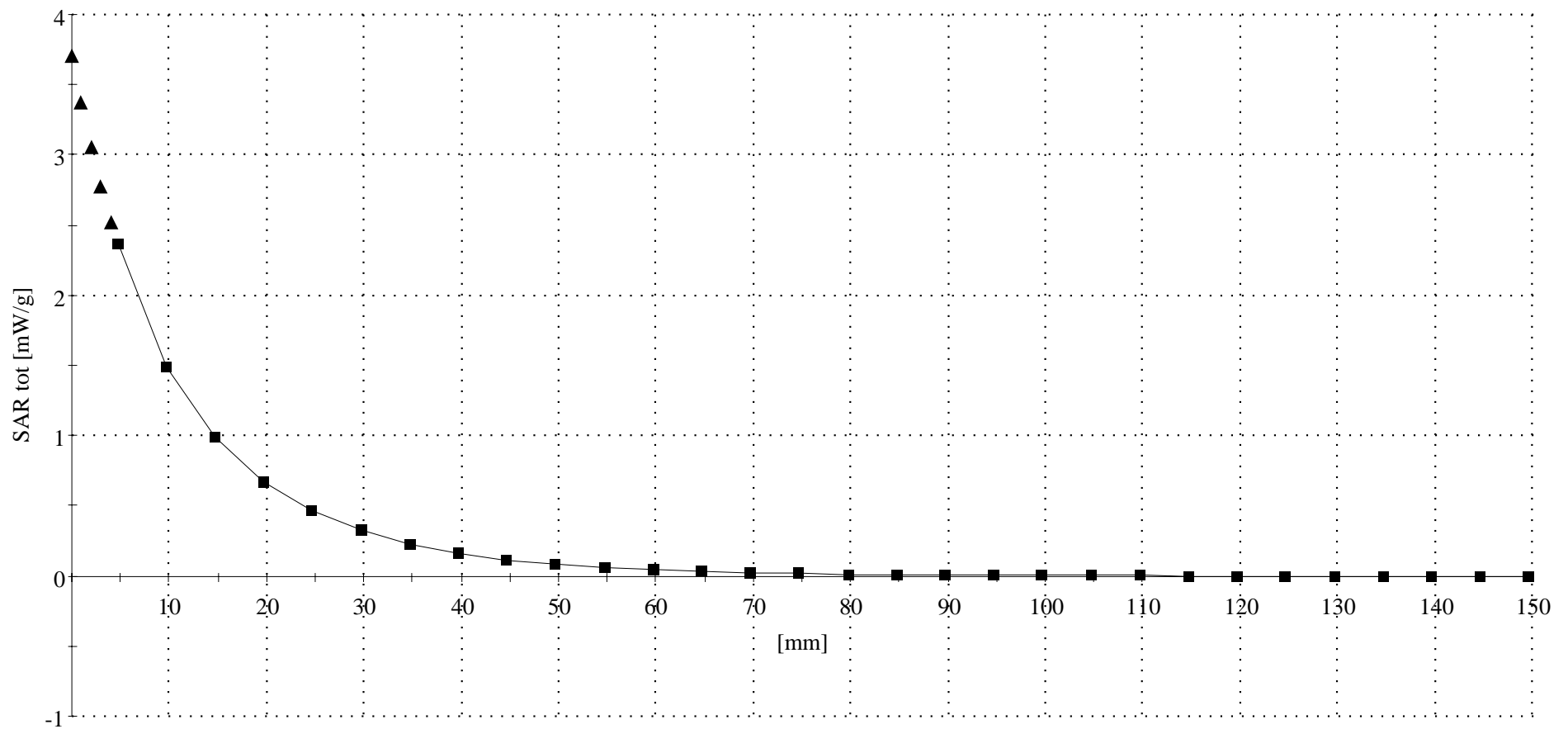
R4 TP-1131 SUGAR SAM Expanded (Rev. 2)-9Jan03 Phantom; Section; Position: ; Frequency: 900 MHz

Probe: ET3DV6 - SN1514-VALADATION4; ConvF(6.08,6.08,6.08); Crest factor: 1.0; 900 MHz VALIDATION:  $\sigma = 0.97$  mho/m  $\epsilon_r = 41.0$   $\rho = 1.00$  g/cm<sup>3</sup>

: , ()

Z-Axis: Dx = 0.0, Dy = 0.0, Dz = 5.0

Penetration depth: 11.4 (10.5, 12.6) [mm]



# Dipole 1800 MHz

1800 MHz System Performance Check / Dipole Sn# 272TR amy19

PM1 Power = 200mW

Sim.Temp@meas=19°C Sim.Temp@SPC = 19.2°C Room Temp @ SPC = 20°C

R4 Amy Twin Phantom Rev.4 (22Aug02) Phantom; section 2 Section; Position: (90°,90°); Frequency: 1800 MHz

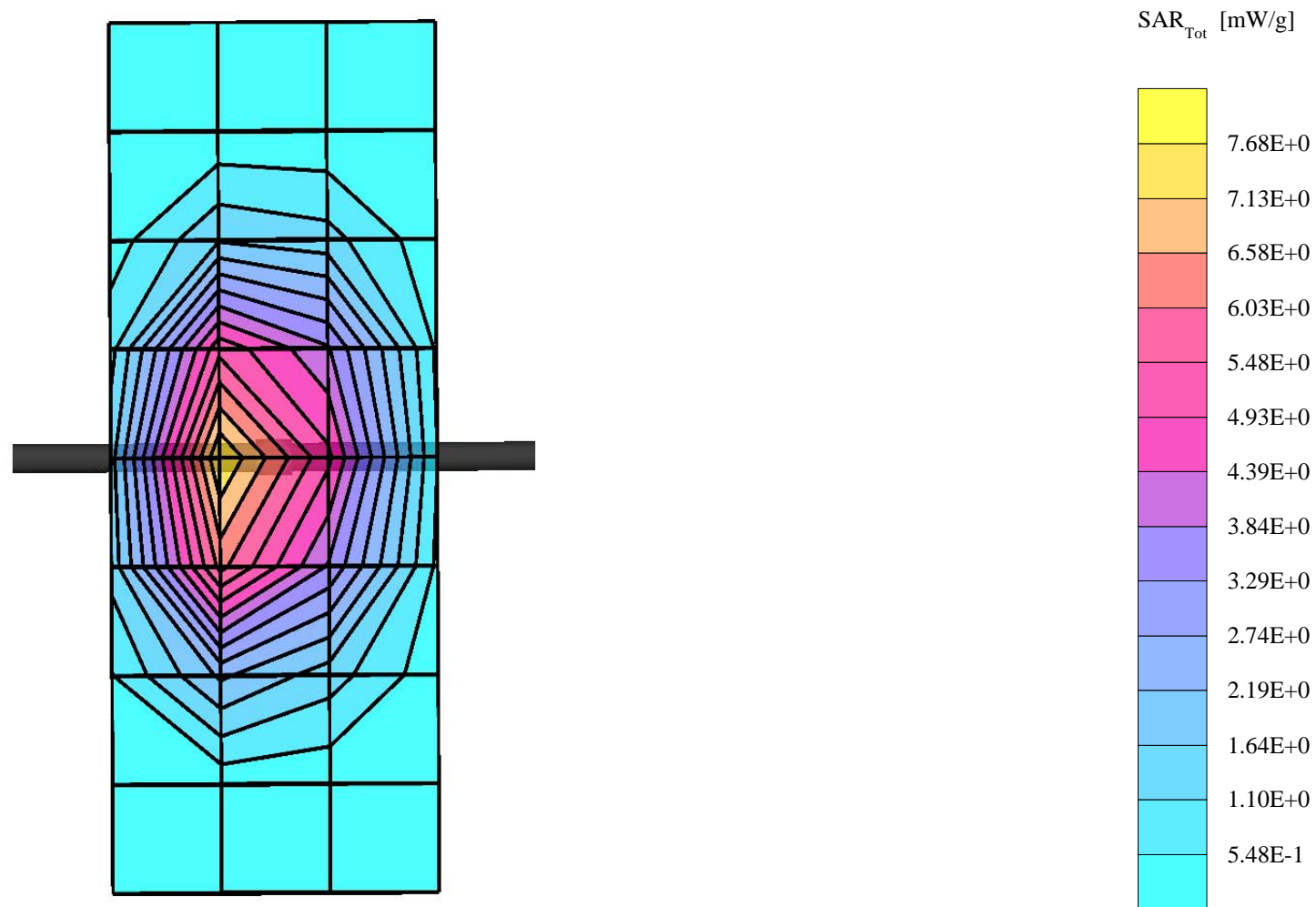
Probe: ET3DV6 - SN1514-VALADATION4; ConvF(5.03,5.03,5.03); Crest factor: 1.0; 1800 MHz VALIDATION:  $\sigma = 1.39$  mho/m  $\epsilon_r = 39.0$   $\rho = 1.00$  g/cm<sup>3</sup>

Cubes (2): SAR (1g): 8.34 mW/g  $\pm 0.03$  dB, SAR (10g): 4.40 mW/g  $\pm 0.00$  dB, (Worst-case extrapolation)

Coarse: Dx = 15.0, Dy = 15.0, Dz = 10.0

Penetration depth: 8.4 (8.0, 9.2) [mm]

Powerdrift: -0.07 dB



# Dipole 1800 MHz

1800 MHz System Performance Check / Dipole Sn# 272TR amy19

PM1 Power = 200mW

Sim.Temp@meas=19°C Sim.Temp@SPC = 19.2°C Room Temp @ SPC = 20°C

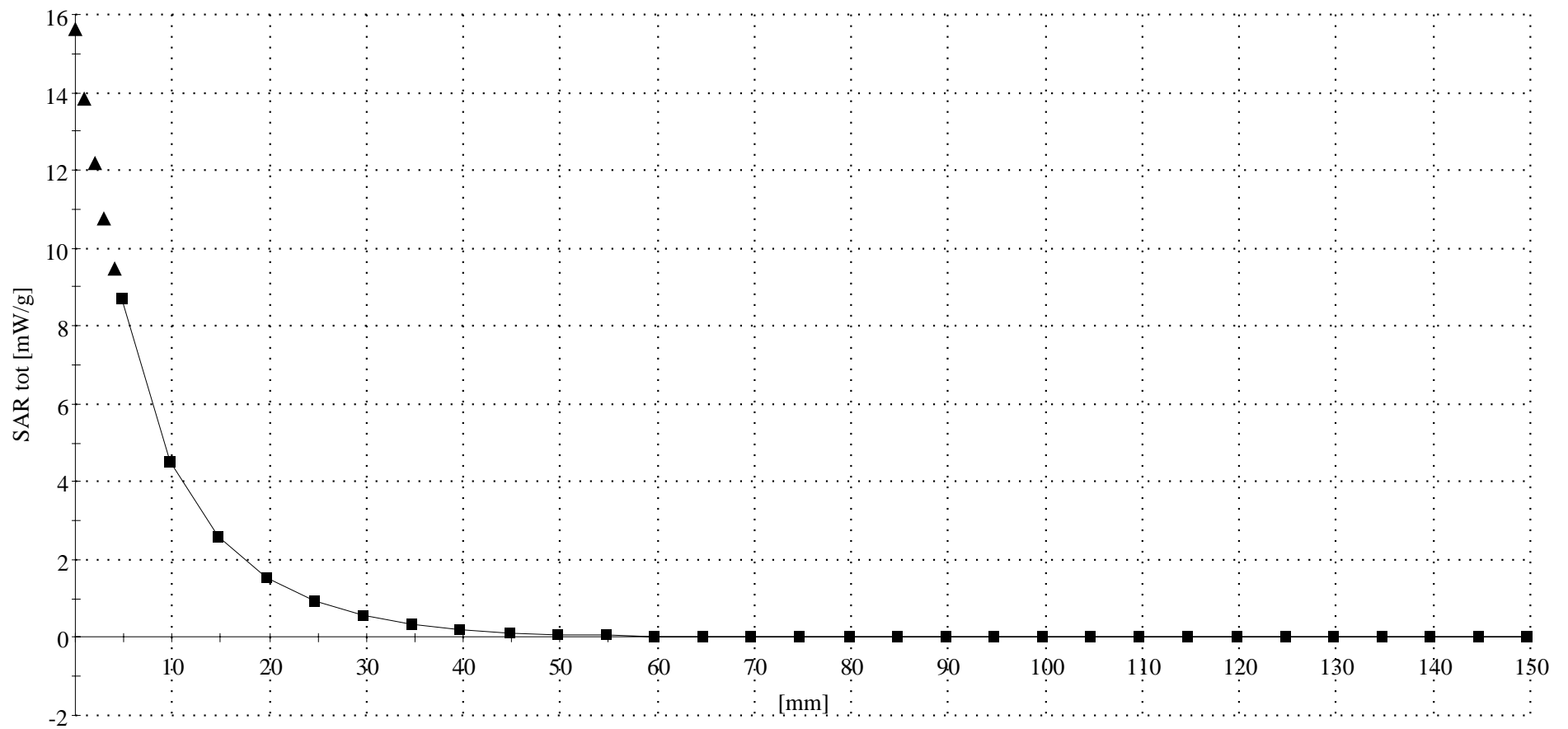
R4 Amy Twin Phantom Rev.4 (22Aug02) Phantom; Section; Position: ; Frequency: 1800 MHz

Probe: ET3DV6 - SN1514-VALADATION4; ConvF(5.03,5.03,5.03); Crest factor: 1.0; 1800 MHz VALIDATION:  $\sigma = 1.39$  mho/m  $\epsilon_r = 39.0$   $\rho = 1.00$  g/cm<sup>3</sup>

: , ()

Z-Axis: Dx = 0.0, Dy = 0.0, Dz = 5.0

Penetration depth: 8.2 (7.8, 9.0) [mm]



## Test Laboratory: Motorola

### 111004 900 MHZ GOOD 2.1%

Date/Time: 11/10/04 09:04:56

**DUT: Dipole 900 MHz; Type: D900V2; Serial: D900V2 - SN:xxx; DUT Notes: Not Specified**

Procedure Notes: 900 MHz System Performance Check / Dipole Sn# 91 PM1 Power = 200mW  
Sim.Temp@meas=19.6 °C Sim.Temp@SPC = 19.6 °C Room Temp @ SPC = 20 °C

Communication System: CW - Dipole, Frequency: 900 MHz, Duty Cycle: 1:1

Medium: VALIDATION Only, Medium parameters used:  $\sigma = 0.98$ ; mho/m,  $\epsilon_r = 41.7$ ;  $\rho = 1000$  kg/m<sup>3</sup>; Probe: ET3DV6R - SN1397, ConvF(6.1, 6.1, 6.1), Calibrated: 5/21/2004; Electronics: DAE3 Sn440, Calibrated: 2/9/2004

Phantom: R1: Sugar SAM, Type: SAM, Serial: TP-1005, Phantom section: Flat Section

Sensor-Surface: 4mm (Mechanical Surface Detection)

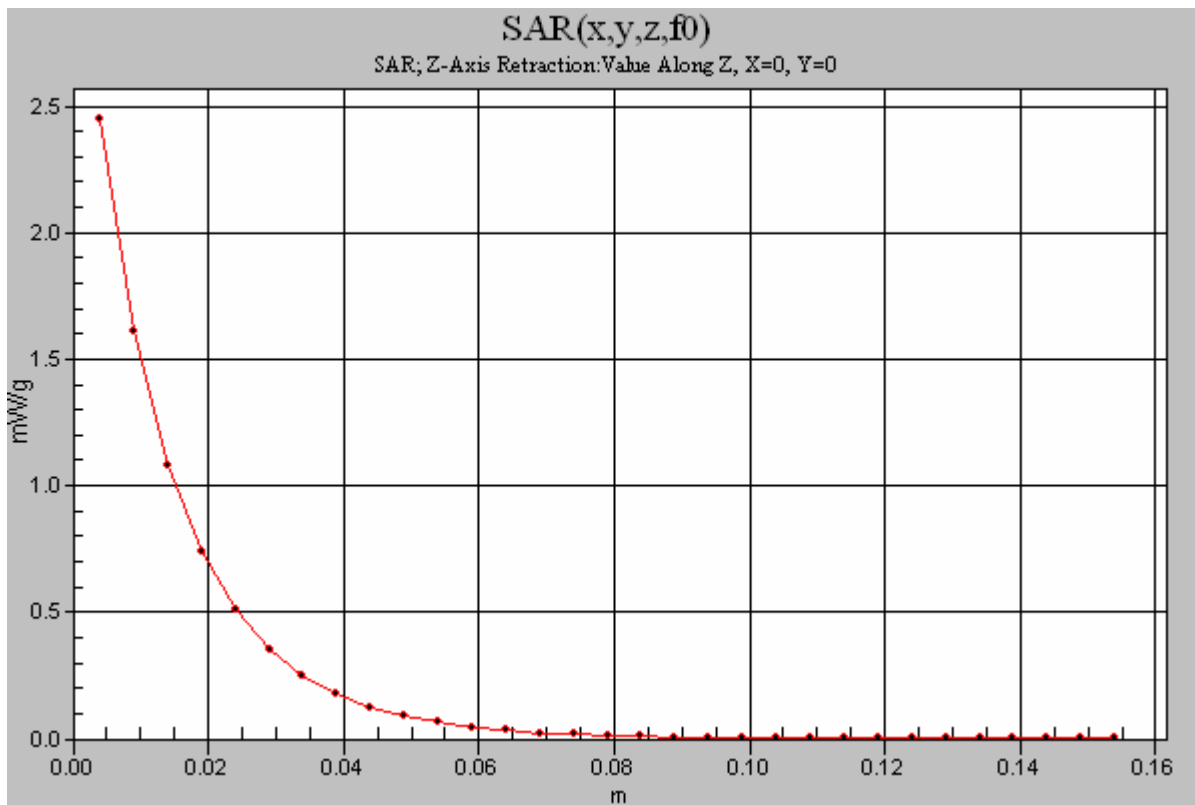
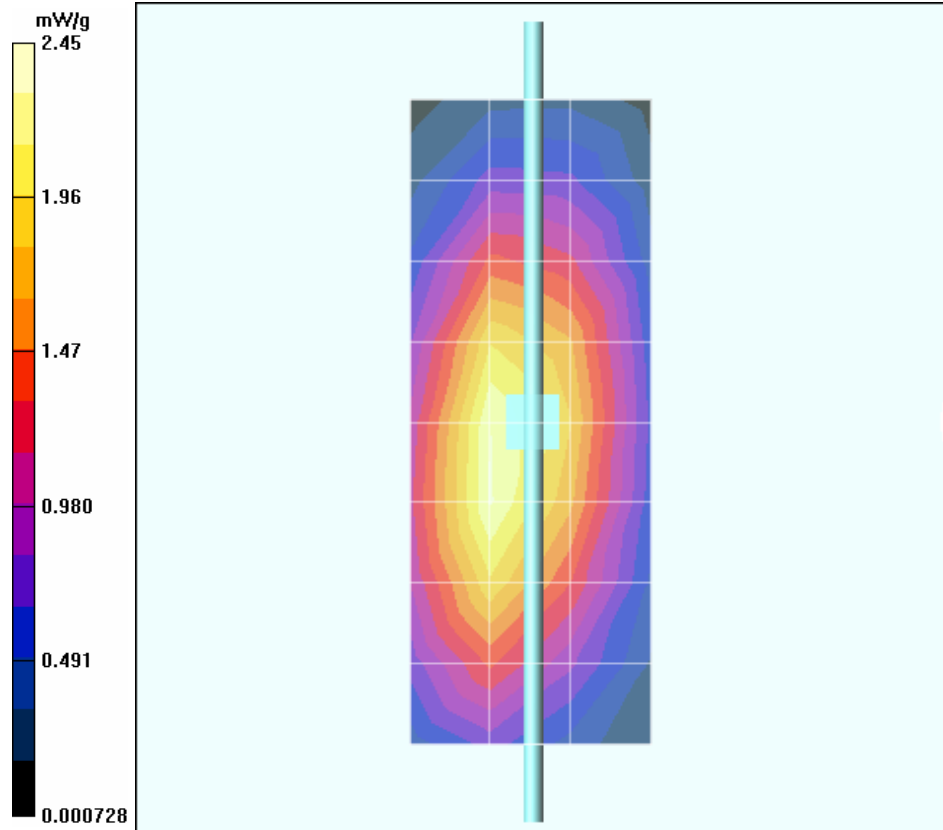
Measurement SW: DASY4, V4.4 Build 3; Postprocessing SW: SEMCAD, V1.8 Build 130

**Daily SPC Check/Dipole Area Scan (4x9x1):** Measurement grid: dx=15mm, dy=15mm  
Maximum value of SAR (measured) = 2.31 mW/g

**Daily SPC Check/0-Degree 5x5x7 Cube (5x5x7)/Cube 0:** Measurement grid: dx=8mm, dy=8mm, dz=5mm  
Reference Value = 50.2 V/m; Power Drift = 0.1 dB  
Peak SAR (extrapolated) = 3.39 W/kg  
**SAR(1 g) = 2.26 mW/g; SAR(10 g) = 1.45 mW/g**  
Maximum value of SAR (measured) = 2.44 mW/g

**Daily SPC Check/90-Degree 5x5x7 Cube (5x5x7)/Cube 0:** Measurement grid:  
dx=8mm, dy=8mm, dz=5mm  
Reference Value = 50.2 V/m; Power Drift = 0.1 dB  
Peak SAR (extrapolated) = 3.25 W/kg  
**SAR(1 g) = 2.15 mW/g; SAR(10 g) = 1.38 mW/g**

**Daily SPC Check/Z-Axis Retraction (1x1x31):** Measurement grid: dx=20mm, dy=20mm, dz=5mm  
Maximum value of SAR (measured) = 2.45 mW/g



## **Appendix 2**

### **SAR distribution plots for Phantom Head Adjacent Use**

Note that, since the head adjacent SAR values for the 850Mhz and 1900Mhz bands were less than or equal to that previously reported, the SAR values for 850Mhz and 1900Mhz bands that are included in tables 1 and 2 are for reference only. As such, no 850Mhz band or 1900Mhz band SAR distribution plots for phantom head adjacent use have been included in Appendix 2 of this document. The 850Mhz band and 1900Mhz band SAR distribution plots for phantom head adjacent use that were included in Appendix 2 of the original filing report should still be considered to apply.

### **Appendix 3**

#### **SAR distribution plots for Body Worn Configuration**

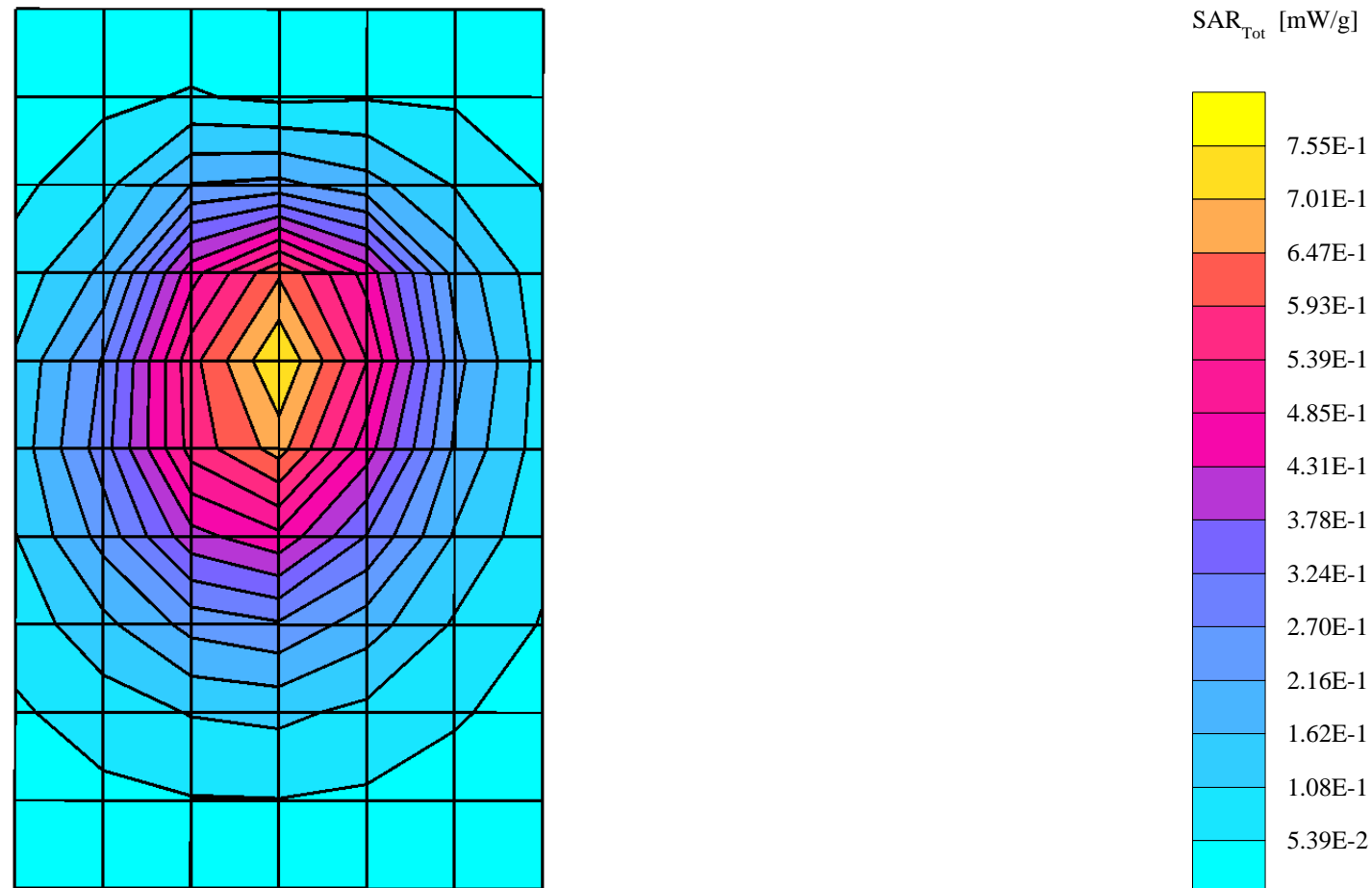
Note that, since the 1900Mhz band body worn SAR values were less than or equal to that previously reported, the values included in table 3 are for reference only. As such, no 1900Mhz band SAR distribution plots for body worn configuration have been included in Appendix 3 of this document. The 1900Mhz band SAR distribution plots for body worn configuration that were included in Appendix 3 of the original filing report should still be considered to apply.

## sn: Phone 2

Ch# 190 / Pwr Step: 5  
Type of Modulation: GSM  
15MM BACK OF PHONE

Antenna Position: NON  
Battery Model #: 5749A

R4 Amy Twin Phantom Rev.4 (22Aug02) Phantom; section 1 Section; Position: (0°,0°); Frequency: 836 MHz  
Probe: ET3DV6 - SN1514-FCC BODY2; ConvF(5.87,5.87,5.87); Crest factor: 8.0; 835 MHz Head & Body:  $\sigma = 0.98$  mho/m  $\epsilon_r = 54.0$   $\rho = 1.00$  g/cm<sup>3</sup>  
Cube 7x7x7: SAR (1g): 0.741 mW/g, SAR (10g): 0.510 mW/g, (Worst-case extrapolation)  
Coarse: Dx = 15.0, Dy = 15.0, Dz = 10.0  
Penetration depth: 14.8 (13.9, 15.8) [mm]  
Powerdrift: -0.09 dB



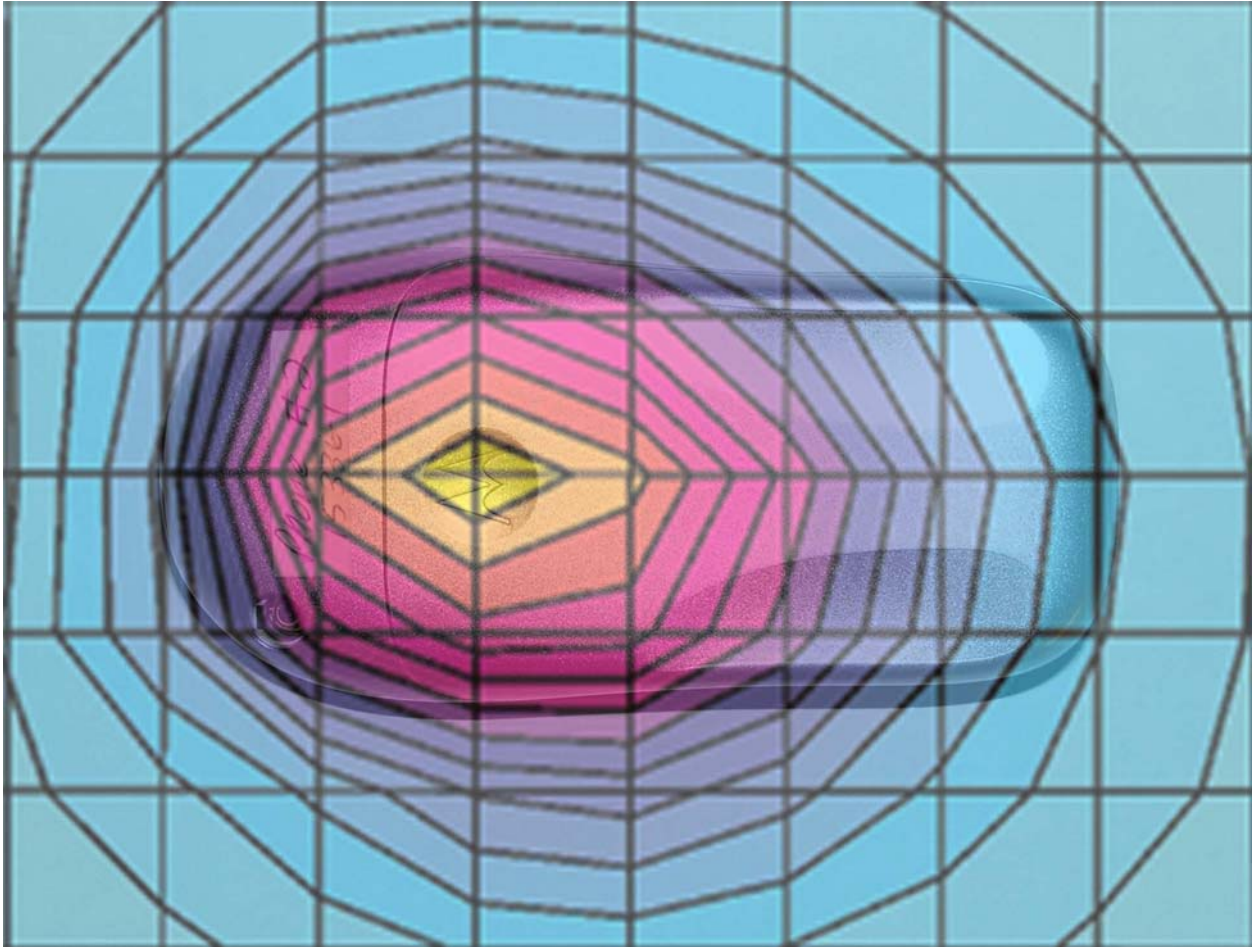


Figure 1. Typical 850 MHz Body-Worn Contour Overlaid on Phone

**Appendix 4**  
**Probe Calibration Certificate**

**Client**      **Motorola PCS**

**CALIBRATION CERTIFICATE**

**Object(s)**      **ET3DV6R - SN:1397**

**Calibration procedure(s)**      **QA CAL-01.v2  
Calibration procedure for dosimetric E-field probes**

**Calibration date:**      **May 21, 2004**



**Condition of the calibrated item**      **In Tolerance (according to the specific calibration document)**

This calibration certificate documents the traceability to national standards, which realize the physical units of measurements (SI).  
The measurements and the uncertainties with confidence probability are given on the following pages and are part of the certificate.

All calibrations have been conducted in the closed laboratory facility: environment temperature 22 +/- 2 degrees Celsius and humidity < 75%.

**Calibration Equipment used (M&TE critical for calibration)**

Model Type	ID #	Cal Date (Calibrated by, Certificate No.)	Scheduled Calibration
Power meter EPM E4419B	GB41293874	5-May-04 (METAS, No 251-00388)	May-05
Power sensor E4412A	MY41495277	5-May-04 (METAS, No 251-00388)	May-05
Reference 20 dB Attenuator	SN: 5086 (20b)	3-May-04 (METAS, No 251-00389)	May-05
Fluke Process Calibrator Type 702	SN: 6295803	8-Sep-03 (Sintrel SCS No. E-030020)	Sep-04
Power sensor HP 8481A	MY41092180	18-Sep-02 (SPEAG, in house check Oct-03)	In house check: Oct 05
RF generator HP 8684C	US3642U01700	4-Aug-99 (SPEAG, in house check Aug-02)	In house check: Aug-05
Network Analyzer HP 8753E	US37390585	18-Oct-01 (SPEAG, in house check Oct-03)	In house check: Oct 05

	Name	Function	Signature
<b>Calibrated by:</b>	Nico Vetterli	Technician	
<b>Approved by:</b>	Katja Pokovic	Laboratory Director	

Date issued: May 21, 2004

This calibration certificate is issued as an intermediate solution until the accreditation process (based on ISO/IEC 17025 International Standard) for Calibration Laboratory of Schmid & Partner Engineering AG is completed.

# Probe ET3DV6R

SN:1397

Manufactured:	October 24, 1999
Last calibrated:	December 15, 2003
Repaired:	April 23, 2004
Recalibrated:	May 21, 2004

Calibrated for DASY Systems

(Note: non-compatible with DASY2 system!)

**DASY - Parameters of Probe: ET3DV6R SN:1397**

Sensitivity in Free Space		Diode Compression <sup>A</sup>		
NormX	1.88 $\mu\text{V}/(\text{V}/\text{m})^2$	DCP X	95	mV
NormY	1.75 $\mu\text{V}/(\text{V}/\text{m})^2$	DCP Y	95	mV
NormZ	2.02 $\mu\text{V}/(\text{V}/\text{m})^2$	DCP Z	95	mV

**Sensitivity in Tissue Simulating Liquid (Conversion Factors)**

Please see Page 7.

**Boundary Effect**

Head	900 MHz	Typical SAR gradient: 5 % per mm		
	Sensor Center to Phantom Surface Distance	3.7 mm	4.7 mm	
	SAR <sub>be</sub> [%] Without Correction Algorithm	8.2	4.1	
	SAR <sub>be</sub> [%] With Correction Algorithm	0.0	0.0	
Head	1800 MHz	Typical SAR gradient: 10 % per mm		
	Sensor Center to Phantom Surface Distance	3.7 mm	4.7 mm	
	SAR <sub>be</sub> [%] Without Correction Algorithm	13.1	8.8	
	SAR <sub>be</sub> [%] With Correction Algorithm	0.1	0.0	

**Sensor Offset**

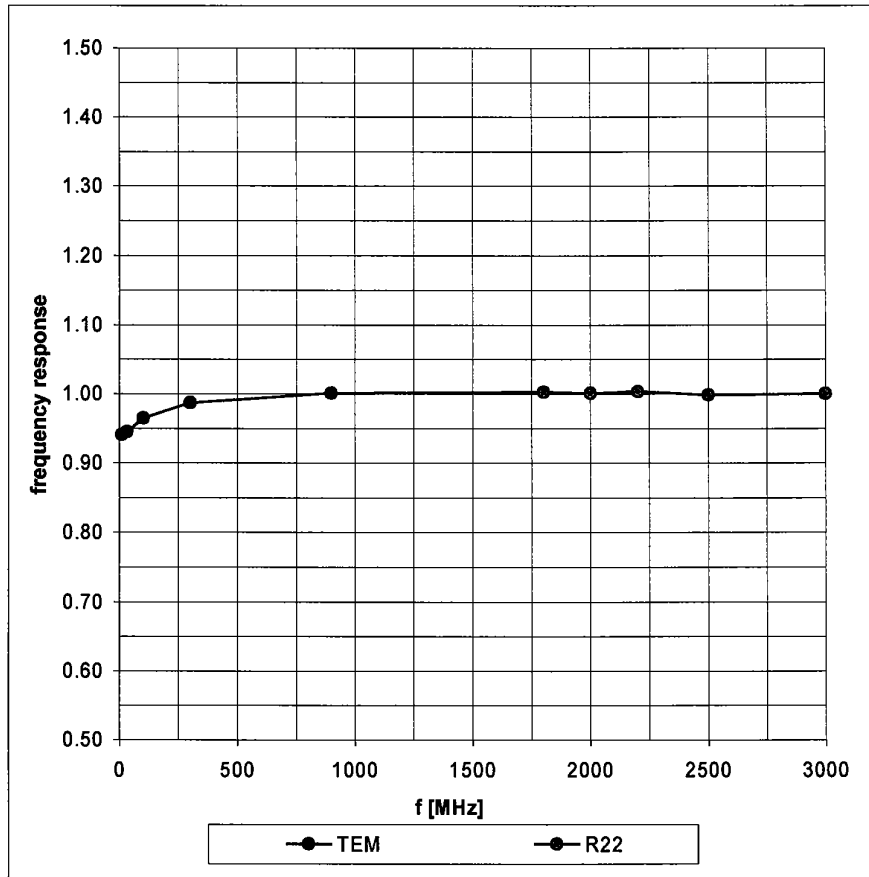
Probe Tip to Sensor Center **2.7** mm

**The reported uncertainty of measurement is stated as the standard uncertainty of measurement multiplied by the coverage factor k=2, which for a normal distribution corresponds to a coverage probability of approximately 95%.**

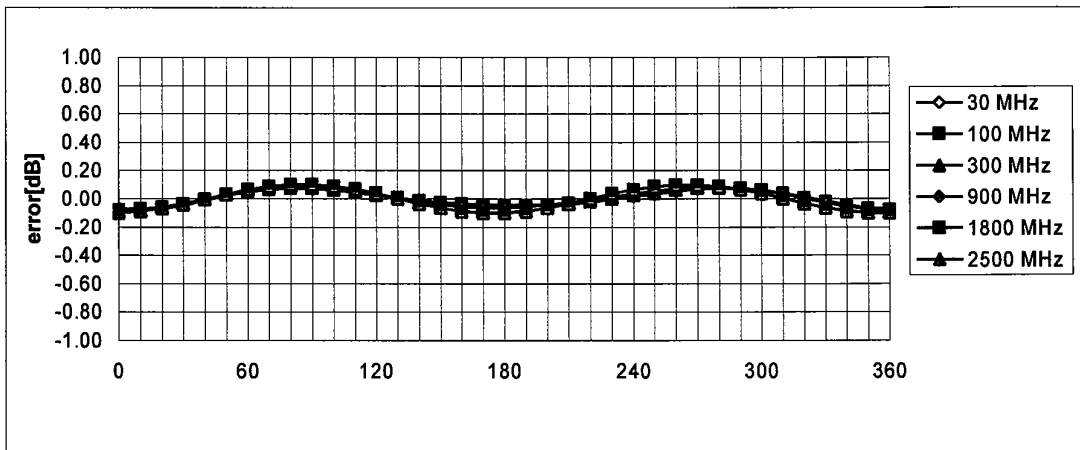
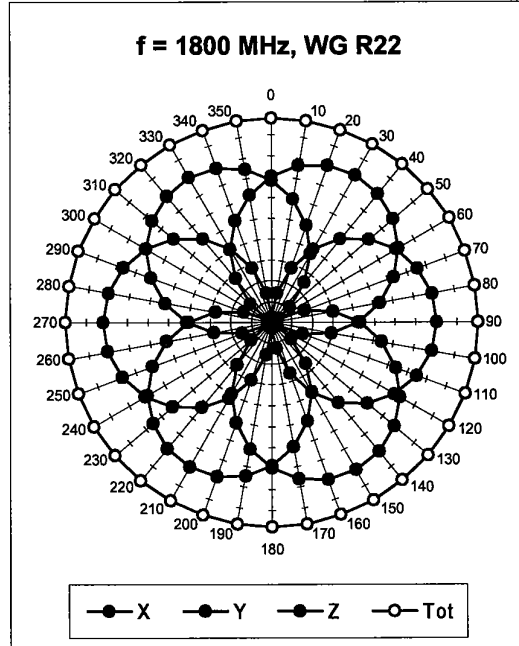
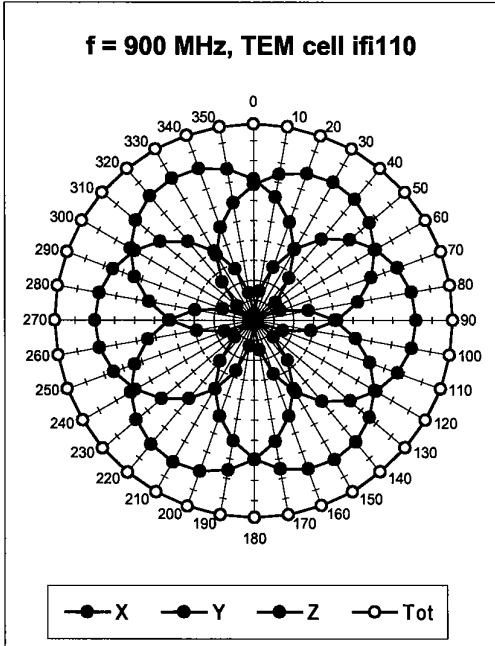
<sup>A</sup> numerical linearization parameter: uncertainty not required

# Frequency Response of E-Field

( TEM-Cell:if1110, Waveguide R22)

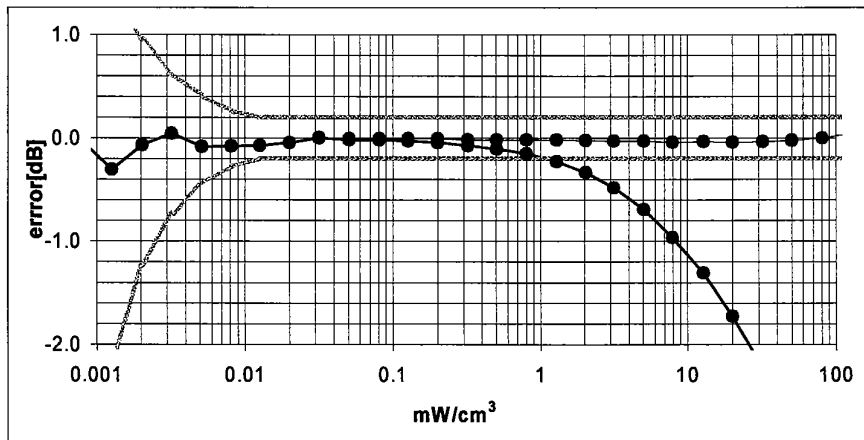
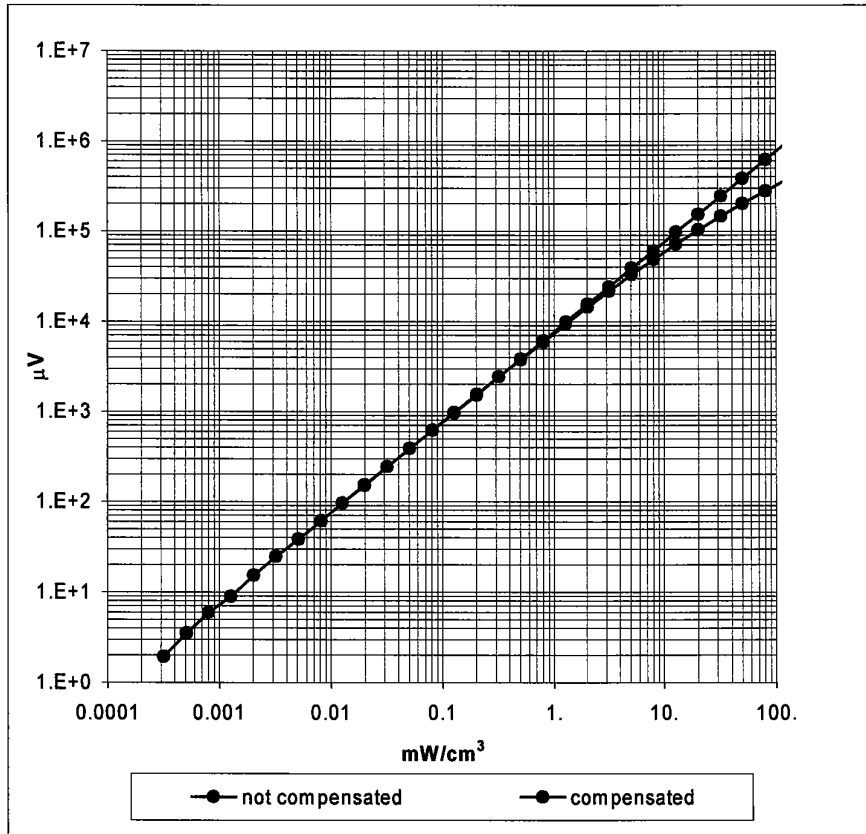


### Receiving Pattern ( $\phi$ ), $\theta = 0^\circ$



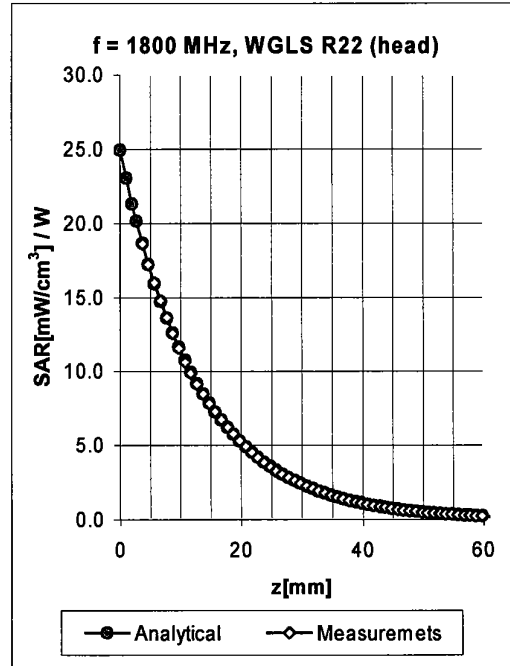
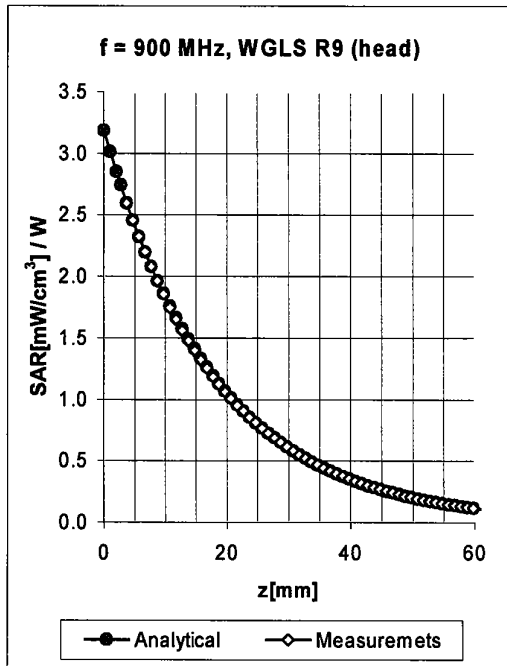
**Axial Isotropy Error <math>< \pm 0.2 \text{ dB}</math>**

### Dynamic Range f(SAR<sub>head</sub>) ( Waveguide R22 )



Probe Linearity Error < ± 0.2 dB

### Conversion Factor Assessment

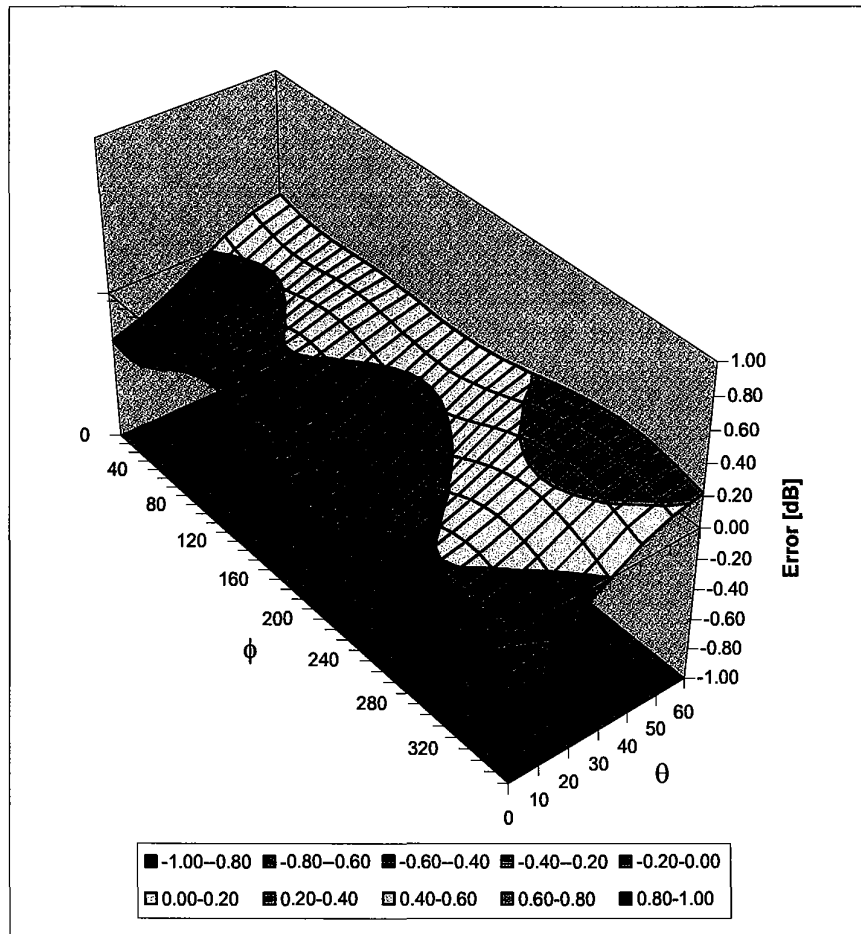


f [MHz]	Validity [MHz] <sup>B</sup>	Tissue	Permittivity	Conductivity	Alpha	Depth	ConvF Uncertainty
900	800-1000	Head	41.5 ± 5%	0.97 ± 5%	0.83	1.55	6.10 ± 9.5% (k=2)
1800	1710-1910	Head	40.0 ± 5%	1.40 ± 5%	0.47	2.66	5.09 ± 9.5% (k=2)
1950	1900-2000	Head	40.0 ± 5%	1.40 ± 5%	0.57	2.51	4.80 ± 9.5% (k=2)
900	800-1000	Body	55.0 ± 5%	1.05 ± 5%	0.50	2.19	5.92 ± 9.5% (k=2)
1800	1710-1910	Body	53.3 ± 5%	1.52 ± 5%	0.55	2.84	4.52 ± 9.5% (k=2)
1950	1900-2000	Body	53.3 ± 5%	1.52 ± 5%	0.66	2.48	4.23 ± 9.5% (k=2)

<sup>B</sup> The stated uncertainty of calibration in according to P1528.

### Deviation from Isotropy in HSL

Error ( $\theta, \phi$ ),  $f = 900$  MHz



Spherical Isotropy Error  $< \pm 0.4$  dB

**Client** Motorola PCS

**CALIBRATION CERTIFICATE**

**Object(s)** ET3DV6 - SN 1514

**Calibration procedure(s)** QA-CAL-01 v2  
Calibration procedure for dosimetric E-field probes

**Calibration date:** July 22, 2004

**Condition of the calibrated item** In Tolerance (according to the specific calibration document)

This calibration certificate documents the traceability to national standards, which realize physical units of measurements (SI).  
The measurements and the uncertainties with confidence probability are given on the following pages and are part of the certificate.

All calibrations have been conducted in the closed laboratory facility: environment temperature 22 +/- 2 degrees Celsius and humidity < 75%.

**Calibration Equipment used (M&TE critical for calibration)**

Model Type	ID #	Cal Date (Calibrated by, Certificate No.)	Scheduled Calibration
Power meter EPM E4419B	GB41293874	5-May-04 (METAS, No 251-00388)	May-05
Power sensor E4412A	MY41495277	5-May-04 (METAS, No 251-00388)	May-05
Reference 20 dB Attenuator	SN: 5086 (20b)	3-May-04 (METAS, No 251-00389)	May-05
Fluke Process Calibrator Type 702	SN: 6295603	8-Sep-03 (Sintrel SCS No. 5030020)	Sep-04
Power sensor HP 8461A	MY41092180	18-Sep-02 (SPEAG, in house check Oct03)	In house check: Oct 05
RF generator HP 8684C	US3642U01700	4-Aug-99 (SPEAG, in house check Aug02)	In house check: Aug05
Network Analyzer HP 8753E	US37390585	18-Oct-01 (SPEAG, in house check Oct03)	In house check: Oct 05

**Calibrated by:** Name: Nico Zahari, Function: Technician, Signature: 

**Approved by:** Name: Katja Pokorny, Function: Laboratory Director, Signature: 

Date Issued: July 22, 2004

This calibration certificate is issued as an intermediate solution until the accreditation process (based on ISO/IEC 17025 International Standard) for Calibration Laboratory of Schmid & Partner Engineering AG is completed.

# Probe ET3DV6

**SN:1514**

Manufactured:	November 24, 1999
Last calibrated:	July 31, 2003
Recalibrated:	July 22, 2004

**Calibrated for DASY Systems**

(Note: non-compatible with DASY2 system!)

## DASY - Parameters of Probe: ET3DV6 SN:1514

Sensitivity in Free Space		Diode Compression <sup>A</sup>		
NormX	1.71 $\mu\text{V}/(\text{V}/\text{m})^2$	DCP X	93	mV
NormY	1.89 $\mu\text{V}/(\text{V}/\text{m})^2$	DCP Y	93	mV
NormZ	1.81 $\mu\text{V}/(\text{V}/\text{m})^2$	DCP Z	93	mV

### Sensitivity in Tissue Simulating Liquid (Conversion Factors)

Please see Page 7.

### Boundary Effect

Head                      900 MHz      Typical SAR gradient: 5 % per mm

Sensor Center to Phantom Surface Distance		3.7 mm	4.7 mm
SAR <sub>be</sub> [%]	Without Correction Algorithm	10.2	5.3
SAR <sub>bc</sub> [%]	With Correction Algorithm	0.1	0.3

Head                      1800 MHz      Typical SAR gradient: 10 % per mm

Sensor Center to Phantom Surface Distance		3.7 mm	4.7 mm
SAR <sub>be</sub> [%]	Without Correction Algorithm	14.0	9.1
SAR <sub>bc</sub> [%]	With Correction Algorithm	0.1	0.0

### Sensor Offset

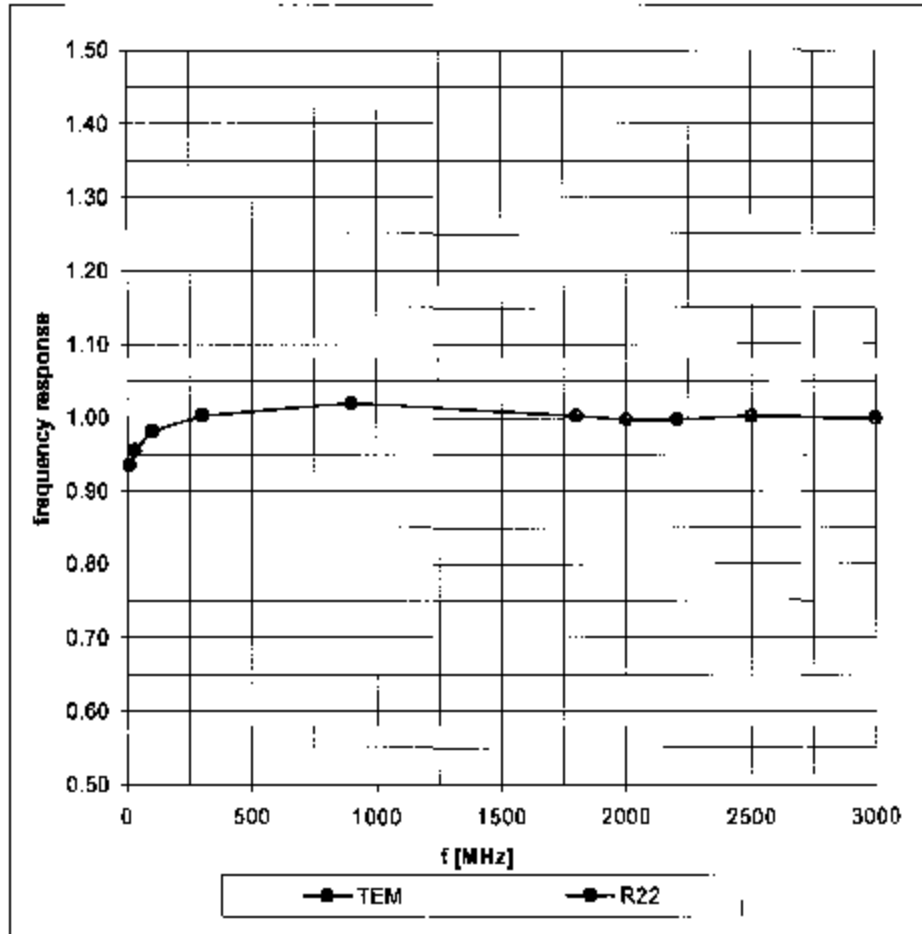
Probe Tip to Sensor Center                      2.7 mm

The reported uncertainty of measurement is stated as the standard uncertainty of measurement multiplied by the coverage factor k=2, which for a normal distribution corresponds to a coverage probability of approximately 95%.

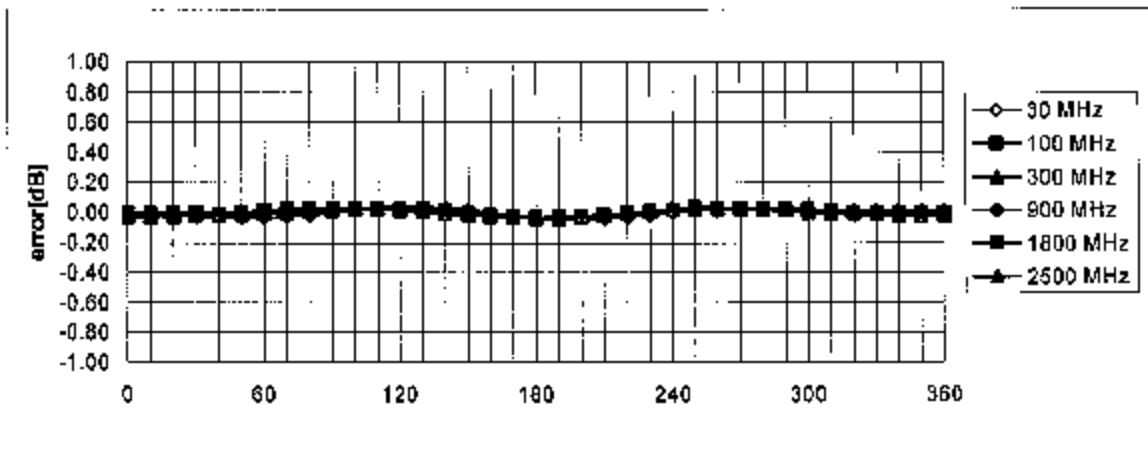
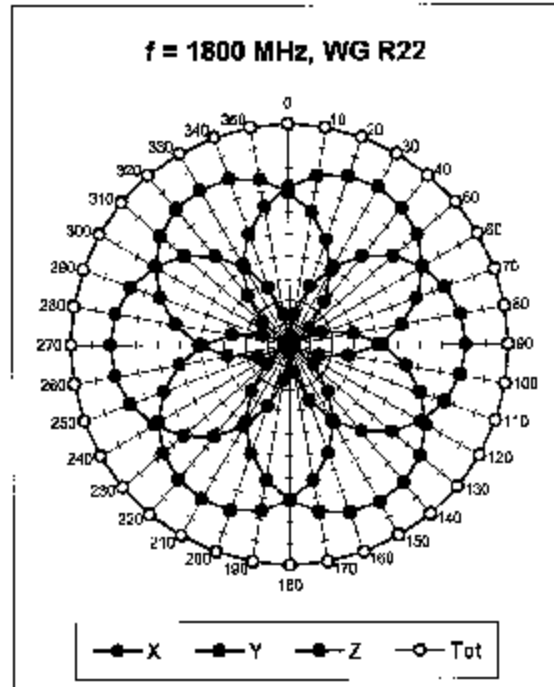
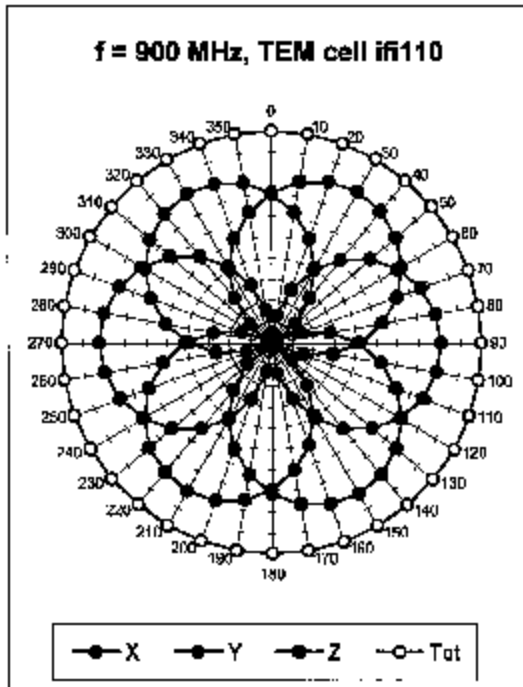
<sup>A</sup> numerical linearization parameter; uncertainty not required

# Frequency Response of E-Field

( TEM-Cell:iff110, Waveguide R22)

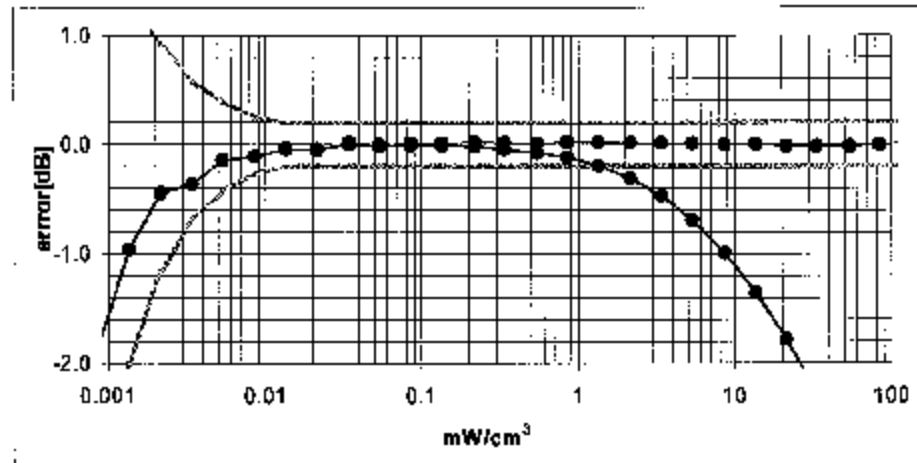
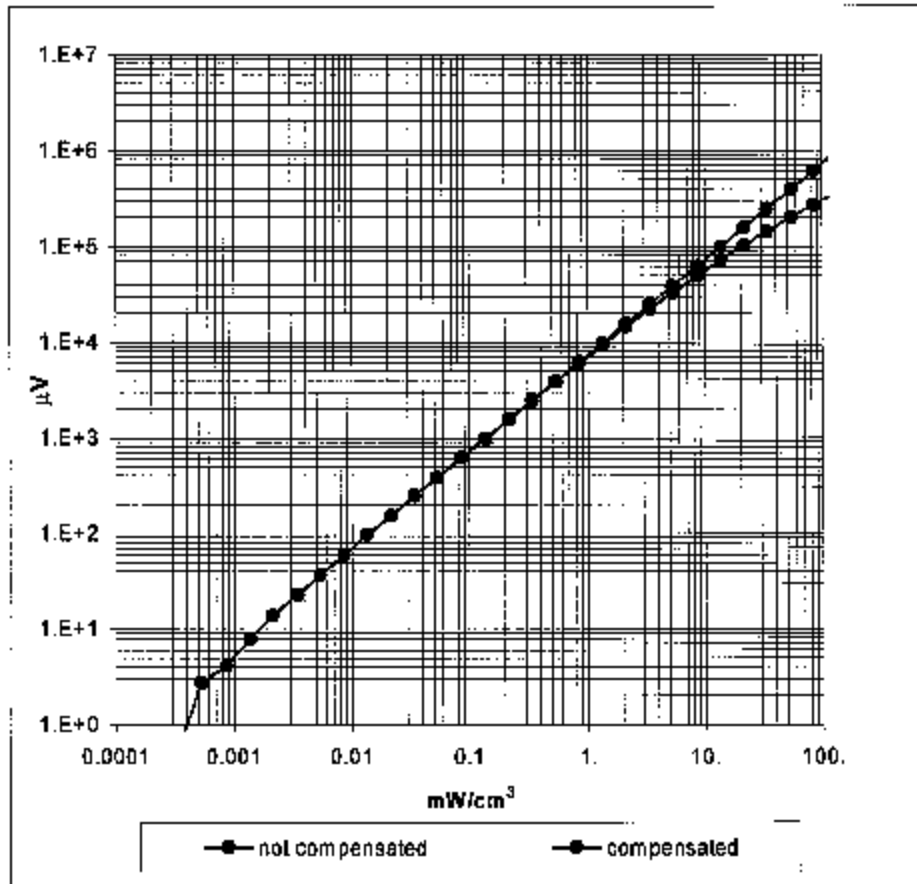


### Receiving Pattern ( $\phi$ ), $\theta = 0^\circ$



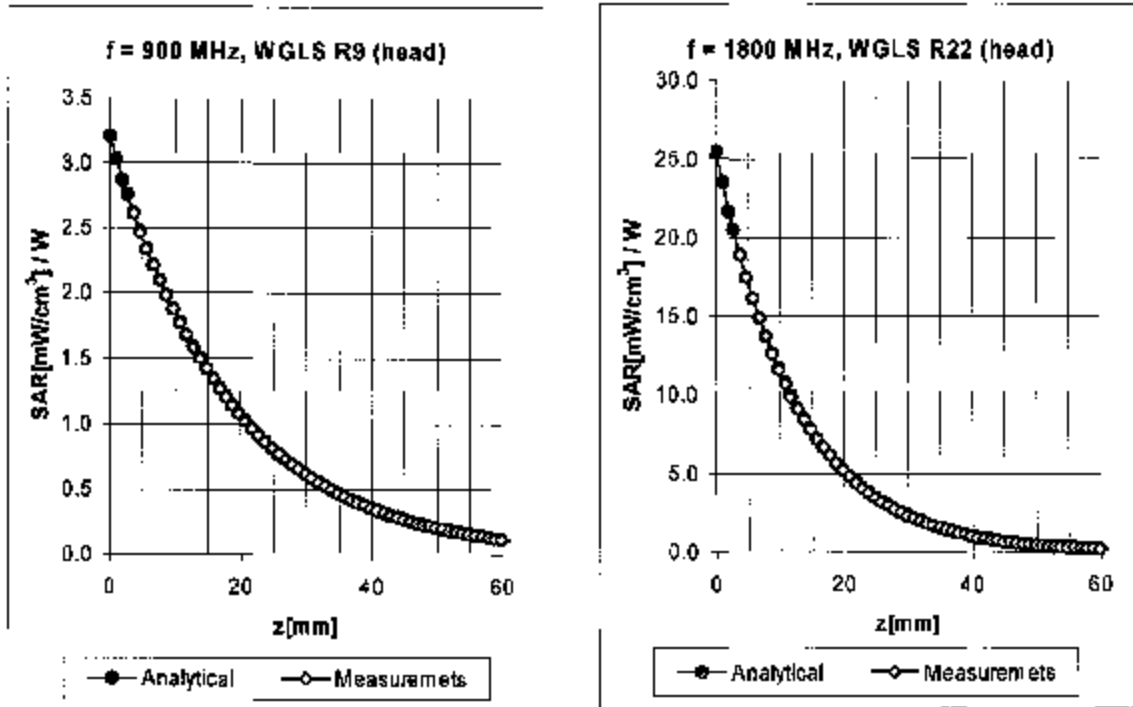
**Axial Isotropy Error  $< \pm 0.2$  dB**

### Dynamic Range f(SAR<sub>head</sub>) ( Waveguide R22 )



Probe Linearity Error  $< \pm 0.2$  dB

## Conversion Factor Assessment

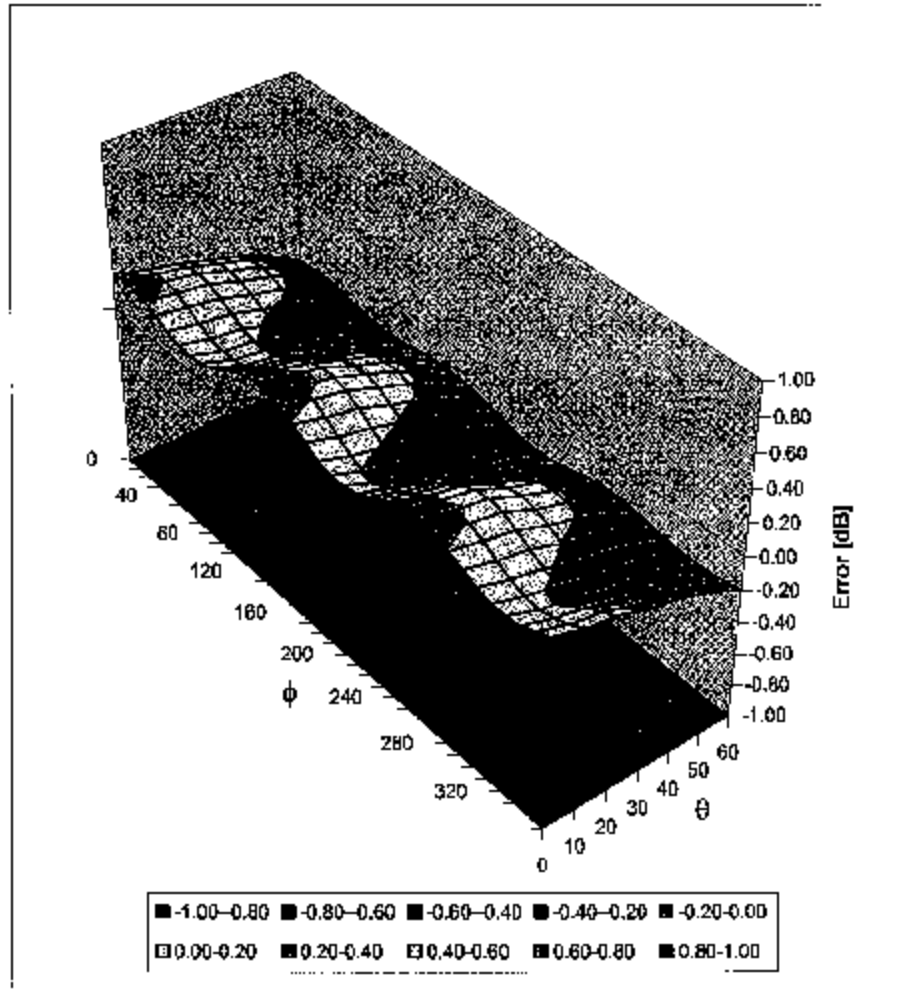


f [MHz]	Validity [MHz] <sup>B</sup>	Tissue	Permittivity	Conductivity	Alpha	Depth	ConvF Uncertainty
900	800-1000	Head	41.5 ± 5%	0.97 ± 5%	0.72	1.79	6.08 ± 9.5% (k=2)
1800	1710-1910	Head	40.0 ± 5%	1.40 ± 5%	0.53	2.53	5.03 ± 9.5% (k=2)
1950	1900-2000	Head	40.0 ± 5%	1.40 ± 5%	0.60	2.51	4.74 ± 9.5% (k=2)
2450	2400-2500	Head	39.2 ± 5%	1.80 ± 5%	1.11	1.81	4.46 ± 9.5% (k=2)
900	800-1000	Body	55.0 ± 5%	1.05 ± 5%	0.58	2.10	5.87 ± 9.5% (k=2)
1800	1710-1910	Body	53.3 ± 5%	1.52 ± 5%	0.61	2.67	4.46 ± 9.5% (k=2)
1950	1900-2000	Body	53.3 ± 5%	1.52 ± 5%	0.72	2.39	4.38 ± 9.5% (k=2)
2450	2400-2500	Body	52.7 ± 5%	1.95 ± 5%	1.81	1.30	4.24 ± 9.5% (k=2)

<sup>B</sup> The stated uncertainty of calibration is according to P152B.

### Deviation from Isotropy in HSL

Error ( $\theta, \phi$ ),  $f = 900$  MHz



**Spherical Isotropy Error  $< \pm 0.4$  dB**

**Appendix 5**  
**Dipole Characterization Certificate**

# Certification of System Performance Check Targets

Based on APP-0396

-Historical Data-

	835MHz	900MHz	1800MHz	1900MHz	
IEEE1528 Target: Advanced Extrapolation	9.5	10.8	38.1	39.7	(W/kg)
Measurement Uncertainty (k=1):	9.0%	9.0%	9.0%	9.0%	
Measurement Period:	1-July-03 to 1-Apr-04	1-July-03 to 1-Apr-04	1-July-03 to 1-Apr-04	1-July-03 to 1-Apr-04	
# of tests performed:	214	1148	1135	62	
Grand Average: Worst Case Extrapolation	10.0	11.4	40.7	42.0	(W/kg)
% Delta (Average - IEEE1528 Target)	5.3%	5.6%	6.8%	5.8%	
Is % Delta <= Measurement Uncertainty?	Yes	Yes	Yes	Yes	
Accept/Reject <u>Average</u> as new system performance check target?	<b>ACCEPT</b>	<b>ACCEPT</b>	<b>ACCEPT</b>	<b>ACCEPT</b>	
	Applicable 835MHz Dipole Serial Numbers:	Applicable 900MHz Dipole Serial Numbers:	Applicable 1800MHz Dipole Serial Numbers:	Applicable 1900MHz Dipole Serial Numbers:	
	420(TR), 421(TR)	77, 78	246(TR), 250(TR)	514(TR), 518(TR)	
	422(TR), 423(TR)	79, 80	251(TR), 258(TR)	519(TR), 520(TR)	
	424(TR), 425(TR)	91, 92	259(TR), 262(TR)	523(TR), 524(TR)	
	431(TR), 432(TR)	93, 94	263(TR), 271(TR)	526(TR), 527(TR)	
	433(TR), 434(TR)	95, 96	272(TR), 273(TR)	528(TR), 529(TR)	
	436(TR)	97, 55	276(TR), 277(TR)	530(TR), 533(TR)	
			279(TR), 280(TR)		
			281(TR), 282(TR)		
			283(TR), 284(TR)		

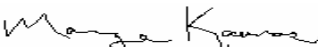
-New System Performance Check Targets- per APP-0396

(based on analysis of historical data)

Frequency	SAR Target (W/kg)	Permittivity	Conductivity (S/m)
835MHz	10.0	41.5 ± 5%	0.90 ± 5%
900MHz	11.4	41.5 ± 5%	0.97 ± 5%
1800MHz	40.7	40.0 ± 5%	1.40 ± 5%
1900MHz	42.0	40.0 ± 5%	1.40 ± 5%

-Approvals-

Submitted by:  Date:

Signed: 

Comments:

Approved by:  Date:

Signed: 

Comments:

**Appendix 6**  
**Measurement Uncertainty Budget**

<b>Uncertainty Budget for Device Under Test</b>									
<i>a</i>	<i>b</i>	<i>c</i>	<i>d</i>	<i>e = f(d,k)</i>	<i>f</i>	<i>g</i>	<i>h = c x f / e</i>	<i>i = c x g / e</i>	<i>k</i>
<b>Uncertainty Component</b>	Sec.	Tol. (± %)	Prob. Dist.	Div.	<i>c<sub>i</sub></i> (1 g)	<i>c<sub>i</sub></i> (10 g)	1 g <i>u<sub>i</sub></i> (±%)	10 g <i>u<sub>i</sub></i> (±%)	<i>v<sub>i</sub></i>
<b>Measurement System</b>									
Probe Calibration	E.2.1	9.5	N	2.00	1	1	4.8	4.8	∞
Axial Isotropy	E.2.2	4.7	R	1.73	0.707	0.707	1.9	1.9	∞
Spherical Isotropy	E.2.2	9.6	R	1.73	0.707	0.707	3.9	3.9	∞
Boundary Effect	E.2.3	5.8	R	1.73	1	1	3.3	3.3	∞
Linearity	E.2.4	4.7	R	1.73	1	1	2.7	2.7	∞
System Detection Limits	E.2.5	1.0	R	1.73	1	1	0.6	0.6	∞
Readout Electronics	E.2.6	1.0	N	1.00	1	1	1.0	1.0	∞
Response Time	E.2.7	0.8	R	1.73	1	1	0.5	0.5	∞
Integration Time	E.2.8	1.3	R	1.73	1	1	0.8	0.8	∞
RF Ambient Conditions	E.6.1	3.0	R	1.73	1	1	1.7	1.7	∞
Probe Positioner Mechanical Tolerance	E.6.2	0.3	R	1.73	1	1	0.2	0.2	∞
Probe Positioning with respect to Phantom Shell	E.6.3	1.1	R	1.73	1	1	0.6	0.6	∞
Extrapolation, interpolation and Integration Algorithms for Max. SAR Evaluation	E.5	3.9	R	1.73	1	1	2.3	2.3	∞
<b>Test sample Related</b>									
Test Sample Positioning	E.4.2	3.6	N	1.00	1	1	3.6	3.6	29
Device Holder Uncertainty	E.4.1	2.8	N	1.00	1	1	2.8	2.8	8
Output Power Variation - SAR drift measurement	6.6.2	5.0	R	1.73	1	1	2.9	2.9	∞
<b>Phantom and Tissue Parameters</b>									
Phantom Uncertainty (shape and thickness tolerances)	E.3.1	4.0	R	1.73	1	1	2.3	2.3	∞
Liquid Conductivity - deviation from target values	E.3.2	5.0	R	1.73	0.64	0.43	1.8	1.2	∞
Liquid Conductivity - measurement uncertainty	E.3.3	10.0	R	1.73	0.64	0.43	3.7	2.5	∞
Liquid Permittivity - deviation from target values	E.3.2	10.0	R	1.73	0.6	0.49	3.5	2.8	∞
Liquid Permittivity - measurement uncertainty	E.3.3	5.0	R	1.73	0.6	0.49	1.7	1.4	∞
<b>Combined Standard Uncertainty</b>			RSS				11.72	11.09	1363
<b>Expanded Uncertainty (95% CONFIDENCE LEVEL)</b>			<i>k</i> =2				22.98	21.75	

**Uncertainty Budget for System Performance Check (dipole & flat phantom)**

<i>a</i>	<i>b</i>	<i>c</i>	<i>d</i>	$e = f(d,k)$	<i>f</i>	<i>g</i>	$h = c \times f / e$	$i = c \times g / e$	<i>k</i>
<b>Uncertainty Component</b>	Sec.	Tol. (± %)	Prob. Dist.	Div.	<i>c<sub>i</sub></i> (1 g)	<i>c<sub>i</sub></i> (10 g)	1 g <i>u<sub>i</sub></i> (±%)	10 g <i>u<sub>i</sub></i> (±%)	<i>v<sub>i</sub></i>
<b>Measurement System</b>									
Probe Calibration	E.2.1	9.5	N	2.00	1	1	4.8	4.8	∞
Axial Isotropy	E.2.2	4.7	R	1.73	1	1	2.7	2.7	∞
Spherical Isotropy	E.2.2	9.6	R	1.73	0	0	0.0	0.0	∞
Boundary Effect	E.2.3	5.8	R	1.73	1	1	3.3	3.3	∞
Linearity	E.2.4	4.7	R	1.73	1	1	2.7	2.7	∞
System Detection Limits	E.2.5	1.0	R	1.73	1	1	0.6	0.6	∞
Readout Electronics	E.2.6	1.0	N	1.00	1	1	1.0	1.0	∞
Response Time	E.2.7	0.0	R	1.73	1	1	0.0	0.0	∞
Integration Time	E.2.8	0.0	R	1.73	1	1	0.0	0.0	∞
RF Ambient Conditions	E.6.1	3.0	R	1.73	1	1	1.7	1.7	∞
Probe Positioner Mechanical Tolerance	E.6.2	0.3	R	1.73	1	1	0.2	0.2	∞
Probe Positioning with respect to Phantom Shell	E.6.3	1.1	R	1.73	1	1	0.6	0.6	∞
Extrapolation, interpolation and Integration Algorithms for Max. SAR Evaluation	E.5	3.9	R	1.73	1	1	2.3	2.3	∞
<b>Dipole</b>									
Dipole Axis to Liquid Distance	8, E.4.2	1.0	R	1.73	1	1	0.6	0.6	∞
Input Power and SAR Drift Measurement	8, 6.6.2	4.7	R	1.73	1	1	2.7	2.7	∞
<b>Phantom and Tissue Parameters</b>									
Phantom Uncertainty (shape and thickness tolerances)	E.3.1	4.0	R	1.73	1	1	2.3	2.3	∞
Liquid Conductivity - deviation from target values	E.3.2	5.0	R	1.73	0.64	0.43	1.8	1.2	∞
Liquid Conductivity - measurement uncertainty	E.3.3	10.0	R	1.73	0.64	0.43	3.7	2.5	∞
Liquid Permittivity - deviation from target values	E.3.2	10.0	R	1.73	0.6	0.49	3.5	2.8	∞
Liquid Permittivity - measurement uncertainty	E.3.3	5.0	R	1.73	0.6	0.49	1.7	1.4	∞
<b>Combined Standard Uncertainty</b>			RSS				10.16	9.43	99999
<b>Expanded Uncertainty (95% CONFIDENCE LEVEL)</b>			<i>k</i> =2				19.92	18.48	

**Appendix 7**

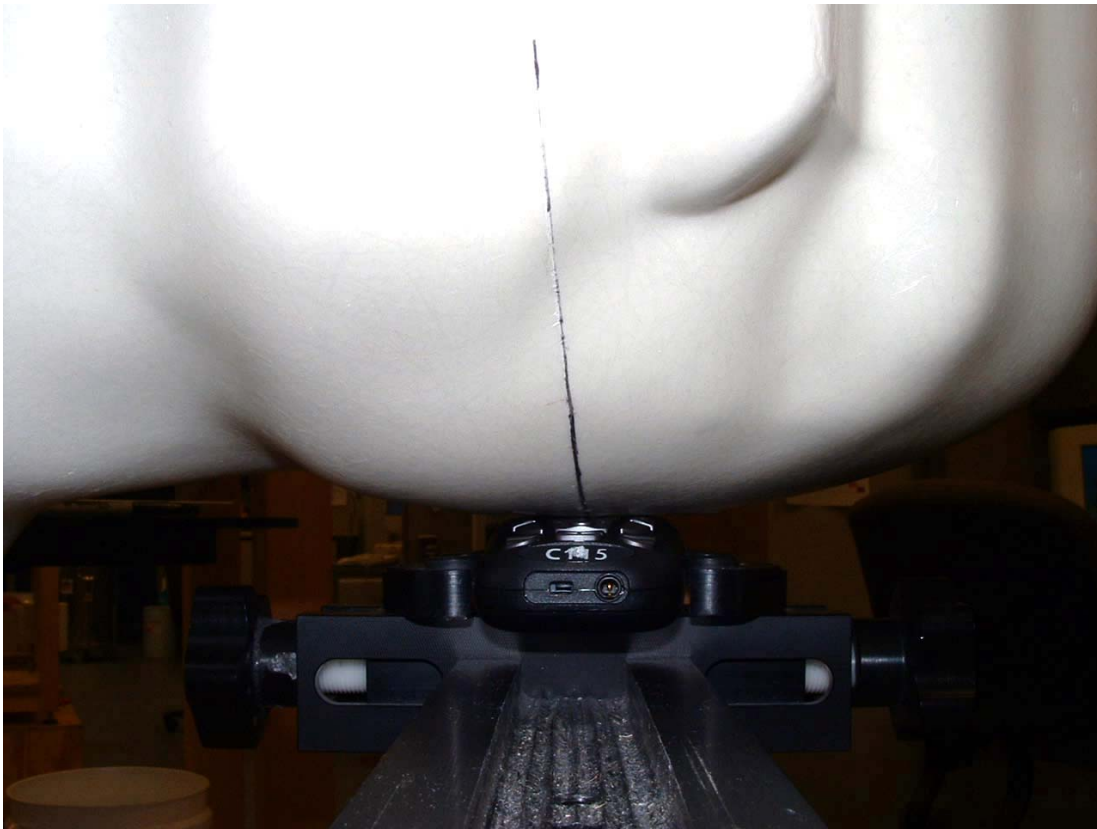
**Photographs of the device under test**



**Figure 2. Front of Phone**



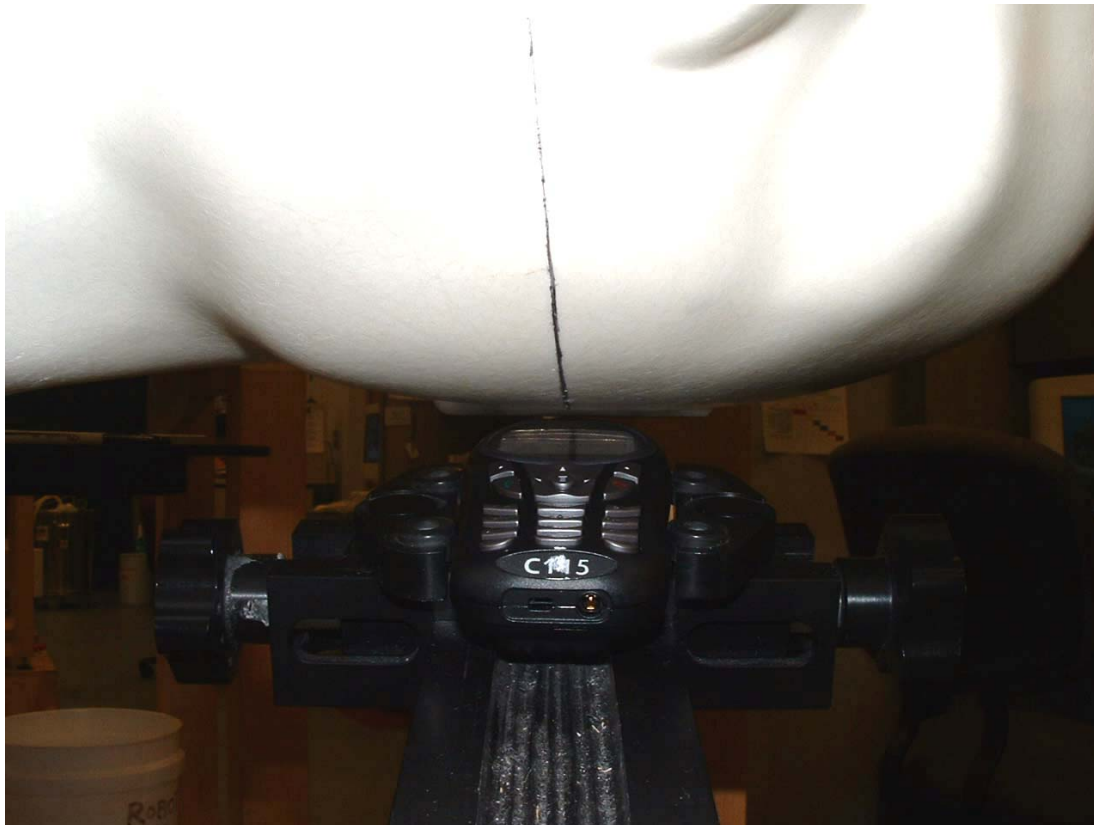
**Figure 3. Back of Phone**



**Figure 4. Phone Against the Head Phantom (Front View - Cheek Touch)**



**Figure 5. Phone Against the Head Phantom (Back View – Cheek Touch)**



**Figure 6. Phone Against the Head Phantom (Front View – 15°Tilt)**



**Figure 7. Phone Against the Head Phantom (Back View – 15°Tilt)**



**Figure 8. Phone Against the Flat Phantom**