

ELITE ELECTRONIC ENGINEERING CO

MKR 1.890 030 0 GHz
-23.90 dBm

ATTEN 30 dB +40dB EXT

REF 17.0 dBm

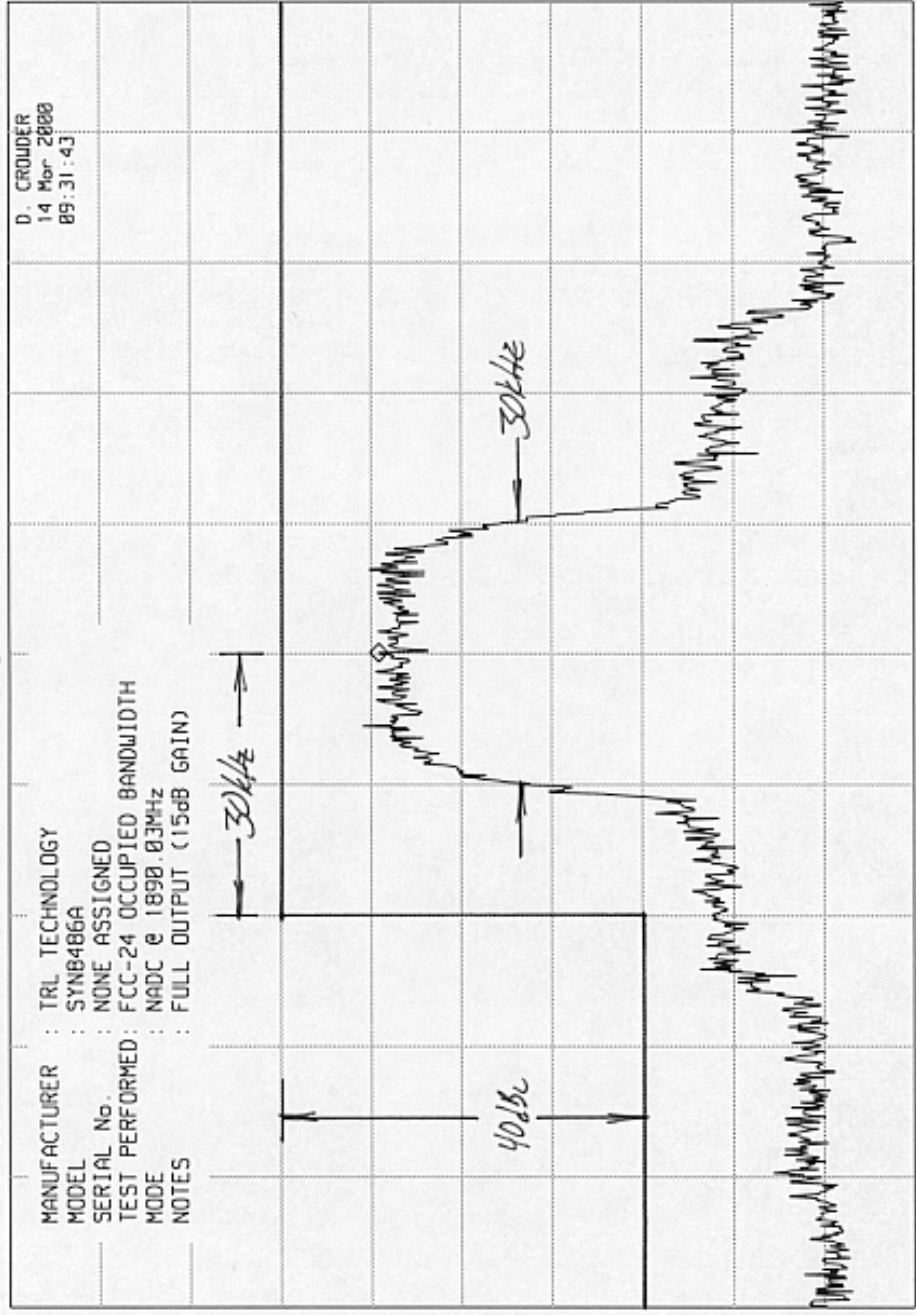
hp

D. CROUDER
14 Mar 2000
09:31:43

MANUFACTURER : TRL TECHNOLOGY
MODEL : SYN8486A
SERIAL No. : NONE ASSIGNED
TEST PERFORMED: FCC-24 OCCUPIED BANDWIDTH
MODE : NADC @ 1890.03MHz
NOTES : FULL OUTPUT (15dB GAIN)

10 dB/

DL -13.0 dBm



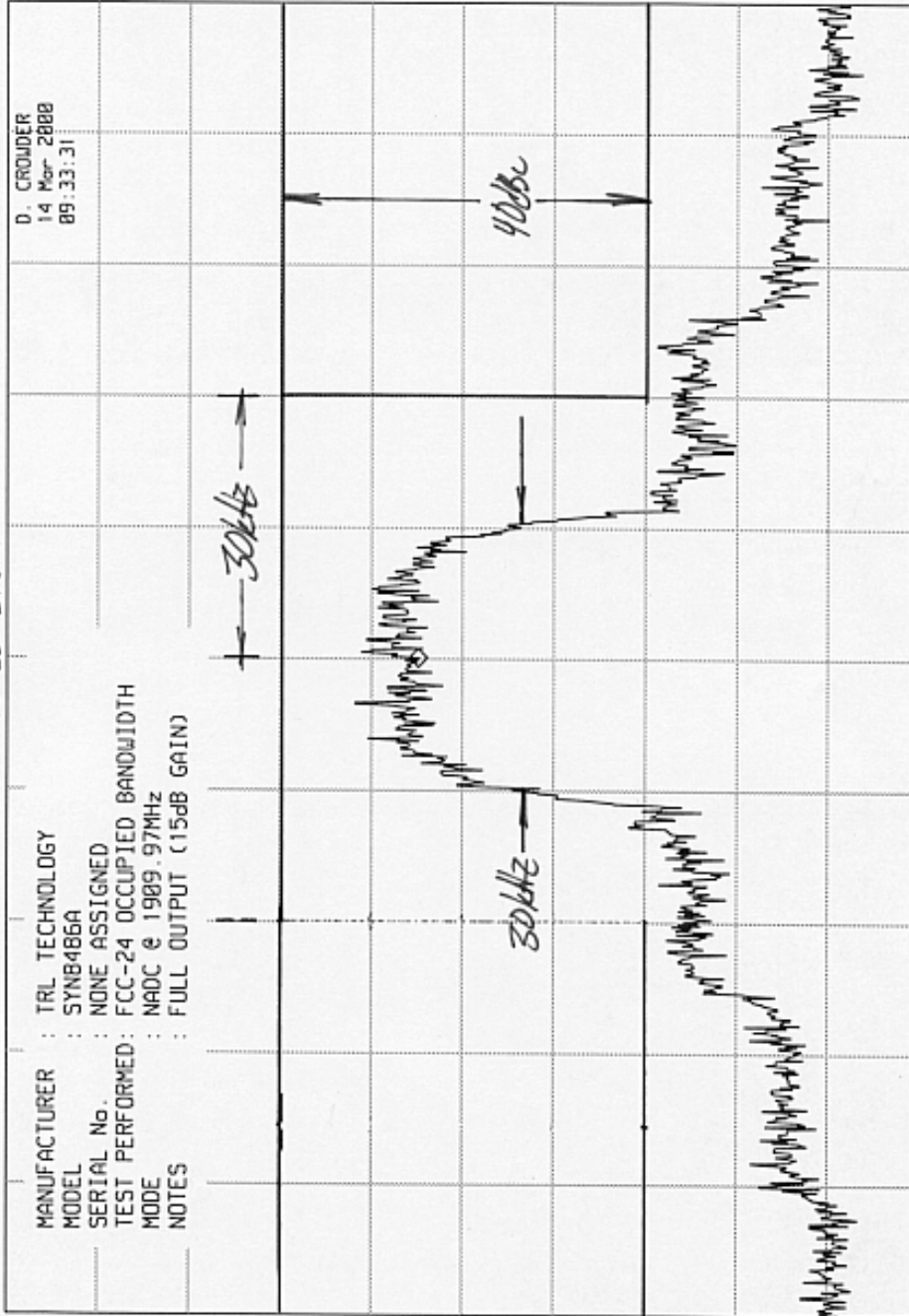
SPAN 150 kHz
SWP 4.50 sec

UBW 1 kHz

CENTER 1.890 030 GHz
RES BW 300 Hz

ELITE ELECTRONIC ENGINEERING CO

hp REF 17.0 dBm ATTN 30 dB +40 dB EXT. MKR 1.909 970 0 GHz -28.20 dBm



MANUFACTURER : TRL TECHNOLOGY
 MODEL : SYN8486A
 SERIAL No. : NONE ASSIGNED
 TEST PERFORMED : FCC-24 OCCUPIED BANDWIDTH
 MODE : NADC @ 1989.97MHZ
 NOTES : FULL OUTPUT (15dB GAIN)

D. CROWDER
 14 Mar 2000
 09:33:31

10 dB/

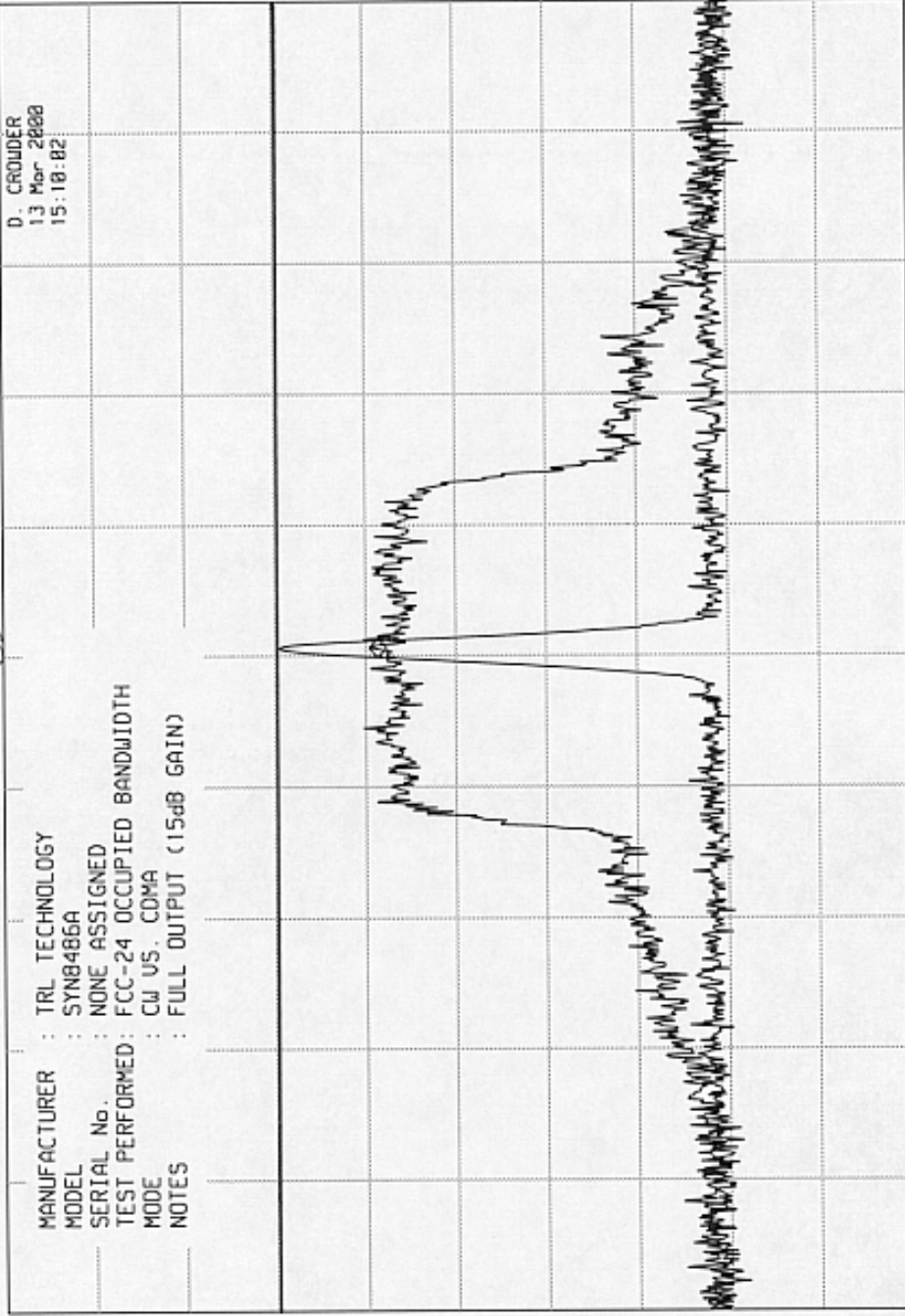
DL -13.0 dBm

CENTER 1.909 970 GHz RES BW 300 Hz UBW 1 kHz SPAN 150 kHz SWP 4.50 sec

ELITE ELECTRONIC ENGINEERING CO

MKR 1.851 255 GHz
-18.60 dBm

REF 22.8 dBm ATTN 40 dB + 40 dB BKT



MANUFACTURER : TRL TECHNOLOGY
 MODEL : SYN8486A
 SERIAL No. : NONE ASSIGNED
 TEST PERFORMED: FCC-24 OCCUPIED BANDWIDTH
 MODE : CW US. COMA
 NOTES : FULL OUTPUT (15dB GAIN)

D. CROWDER
 13 Mar 2000
 15:10:02

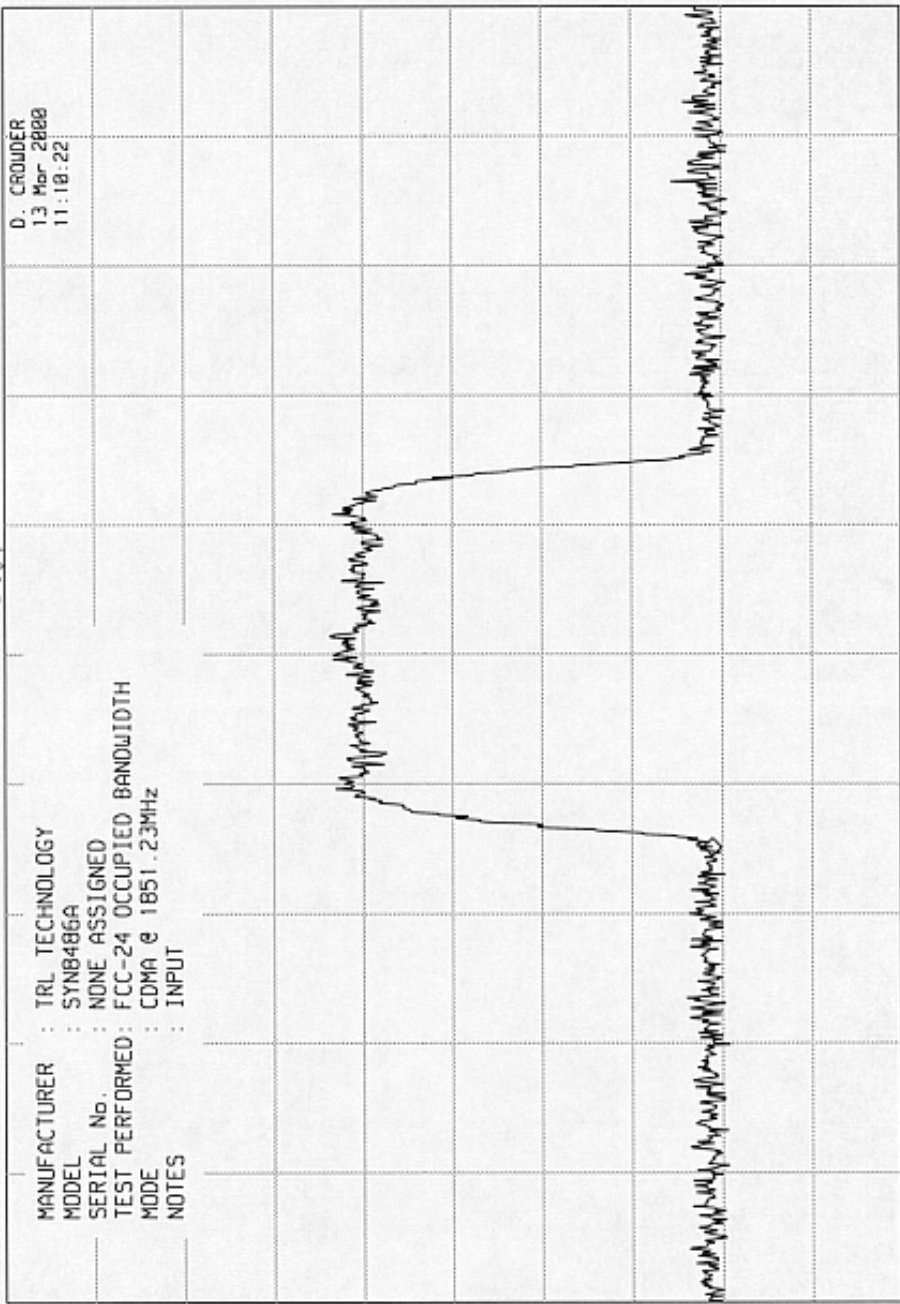
hp 10 dB/
 DL -9.0 dBm

CENTER 1.851 23 GHz
 RES BW 30 kHz
 SPAN 5.00 MHz
 SWP 20.0 msec
 UBW 100 kHz

ELITE ELECTRONIC ENGINEERING CO

MKR 1.850 480 GHz
-56.10 dBm

hp 10 dB/
REF 22.8 dBm
ATTEN 40 dB + 20dB EXT



MANUFACTURER : TRL TECHNOLOGY
MODEL : SYN8486A
SERIAL No. : NONE ASSIGNED
TEST PERFORMED : FCC-24 OCCUPIED BANDWIDTH
MODE : CDMA e 1851.23MHz
NOTES : INPUT

CENTER 1.851 23 GHz
RES BW 30 kHz
SPAN 5.00 MHz
SWP 20.0 msec
UBW 100 kHz