

ELITE ELECTRONIC ENGINEERING CO

MRK 1.870 030 0 GHz
-17.80 dBm

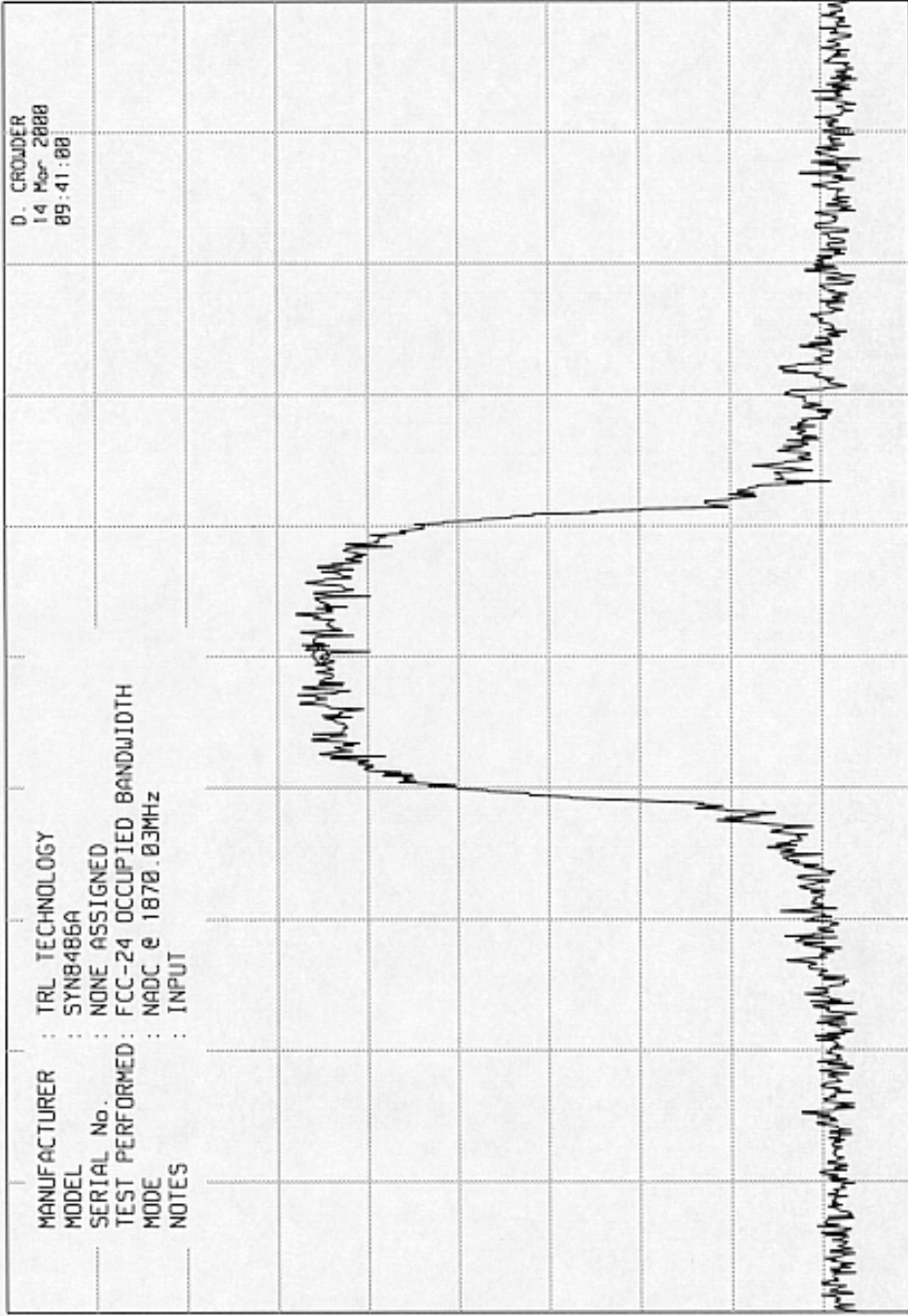
ATTEN 30 dB +20 dB EXT

REF 17.0 dBm

hp

10 dB/

MANUFACTURER : TRL TECHNOLOGY
MODEL : SYN8486A
SERIAL No. : NONE ASSIGNED
TEST PERFORMED : FCC-24 OCCUPIED BANDWIDTH
MODE : NADC @ 1870.03MHz
NOTES : INPUT

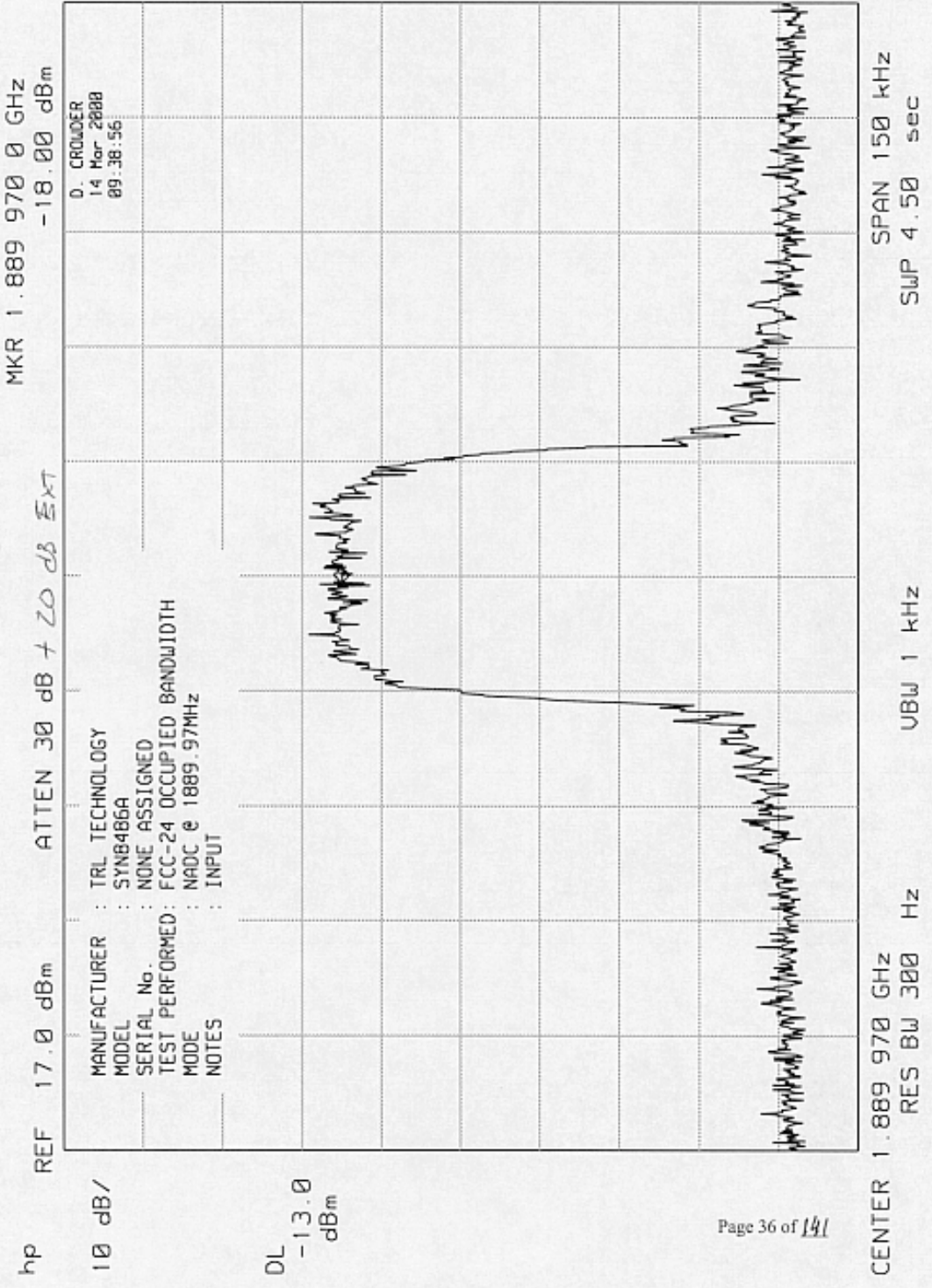


D. CROWDER
14 Mar 2008
09:41:00

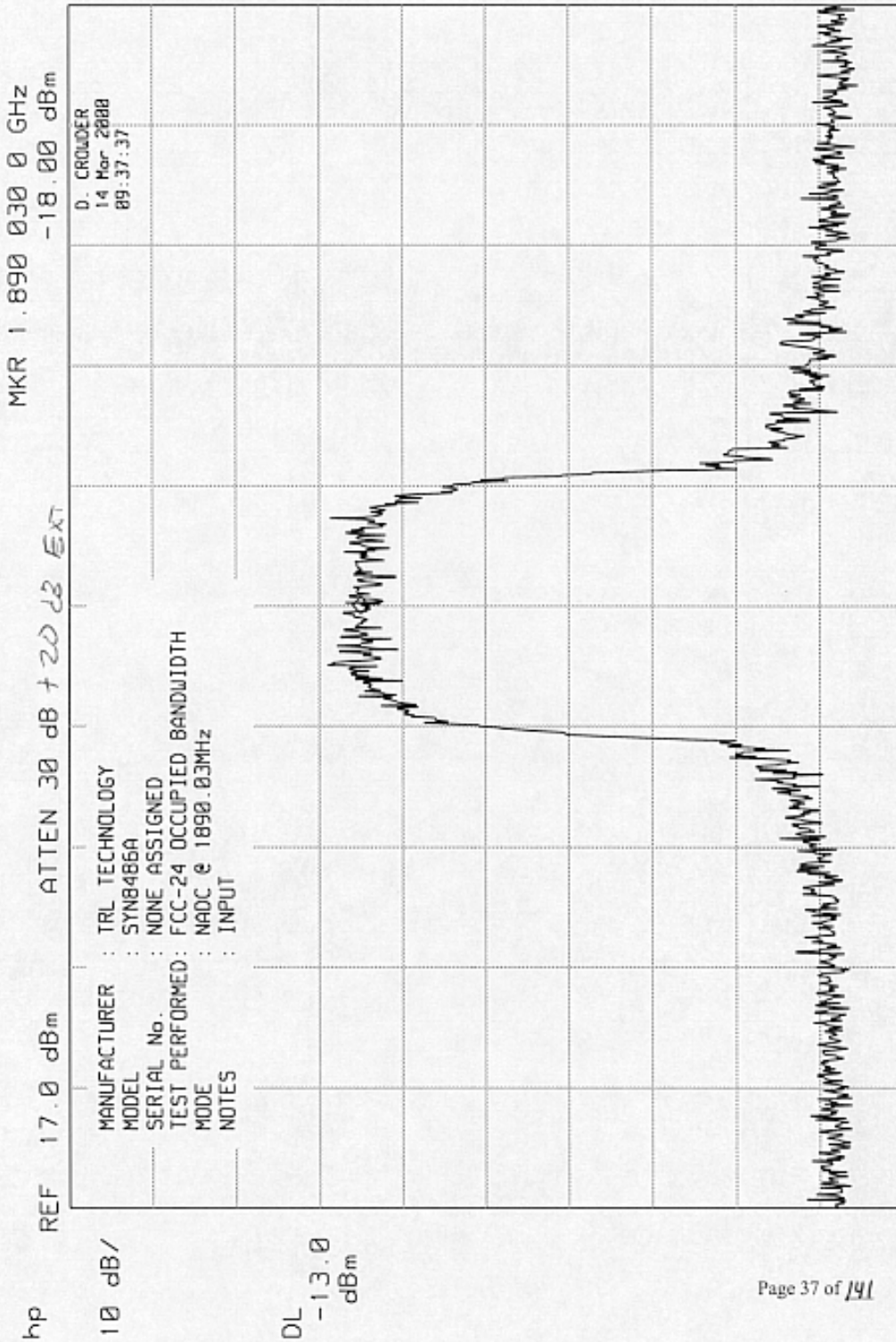
DL -13.0
dBm

CENTER 1.870 030 GHz
RES BW 300 Hz
UBW 1 kHz
SPAN 150 kHz
SWP 4.50 sec

ELITE ELECTRONIC ENGINEERING CO



ELITE ELECTRONIC ENGINEERING CO



ELITE ELECTRONIC ENGINEERING CO

MKR 1.909 970 0 GHz
-15.70 dBm

ATTEN 30 dB + 20dB EXT

REF 17.0 dBm

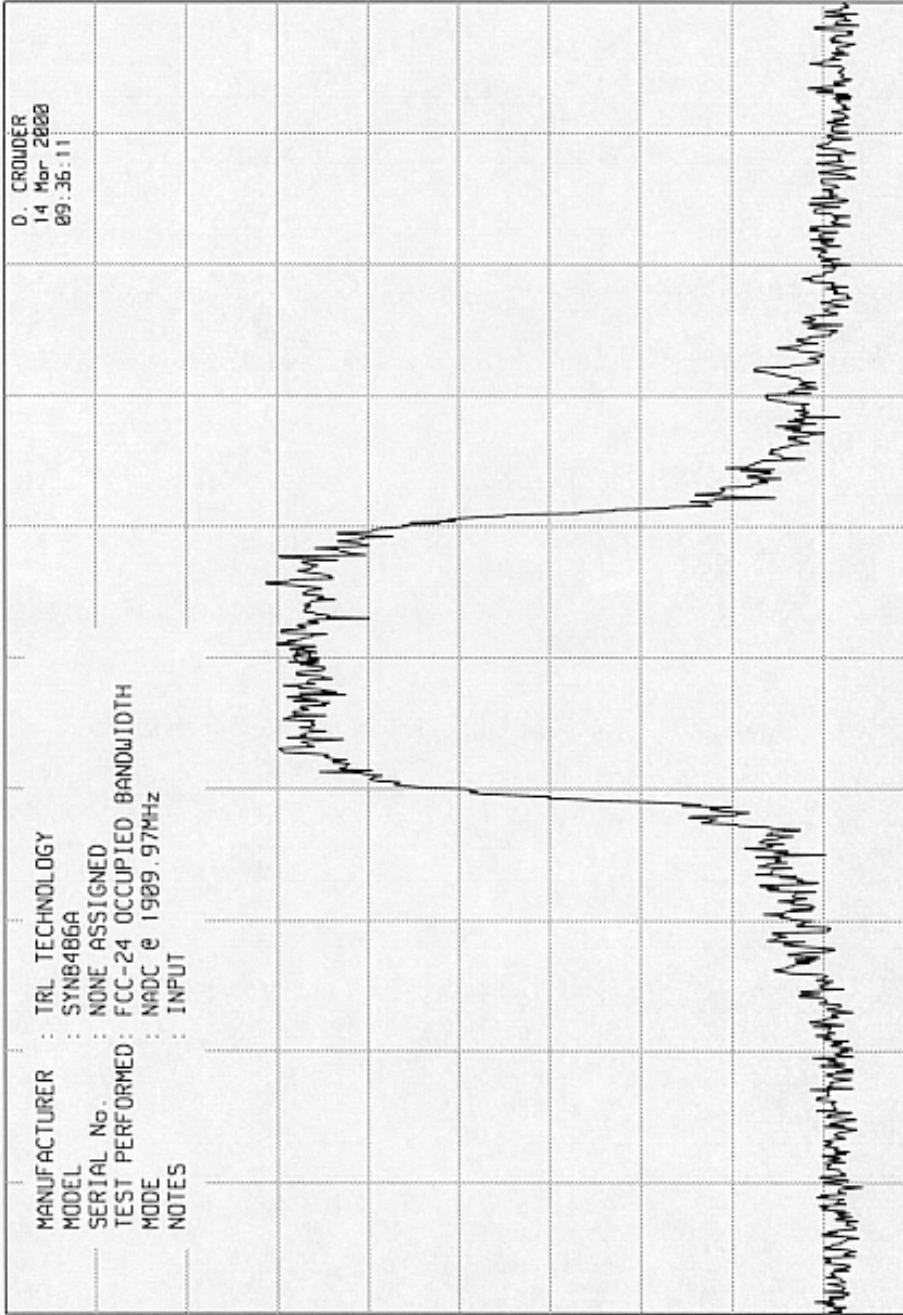
hp

10 dB/

MANUFACTURER : TRL TECHNOLOGY
MODEL : SYN8486A
SERIAL No. : NONE ASSIGNED
TEST PERFORMED : FCC-24 OCCUPIED BANDWIDTH
MODE : NADC @ 1909.97MHz
NOTES : INPUT

D. CROUDER
14 Mar 2000
09:36:11

DL -13.0
dBm



CENTER 1.909 970 GHz
RES BW 300 Hz

UBW 1 kHz

SPAN 150 kHz
SWP 4.50 sec