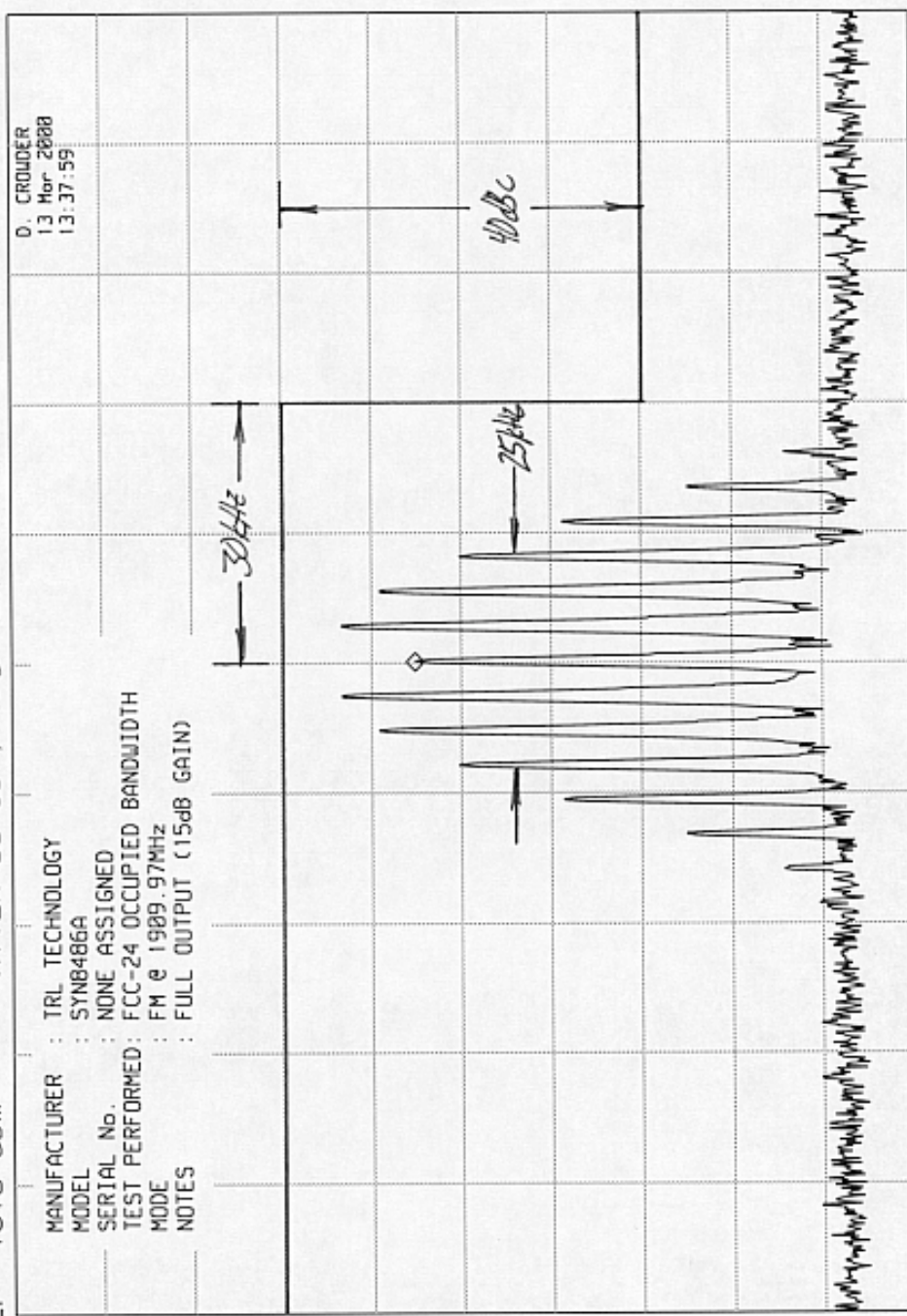


ELITE ELECTRONIC ENGINEERING CO

MRK 1.909 970 0 GHz  
-26.90 dBm

REF 18.0 dBm      ATTN 30 dB + 40dB EXT.

MANUFACTURER : TRL TECHNOLOGY  
MODEL : SYN8486A  
SERIAL No. : NONE ASSIGNED  
TEST PERFORMED : FCC-24 OCCUPIED BANDWIDTH  
MODE : FM @ 1909.97MHz  
NOTES : FULL OUTPUT (15dB GAIN)



hp 10 dB/

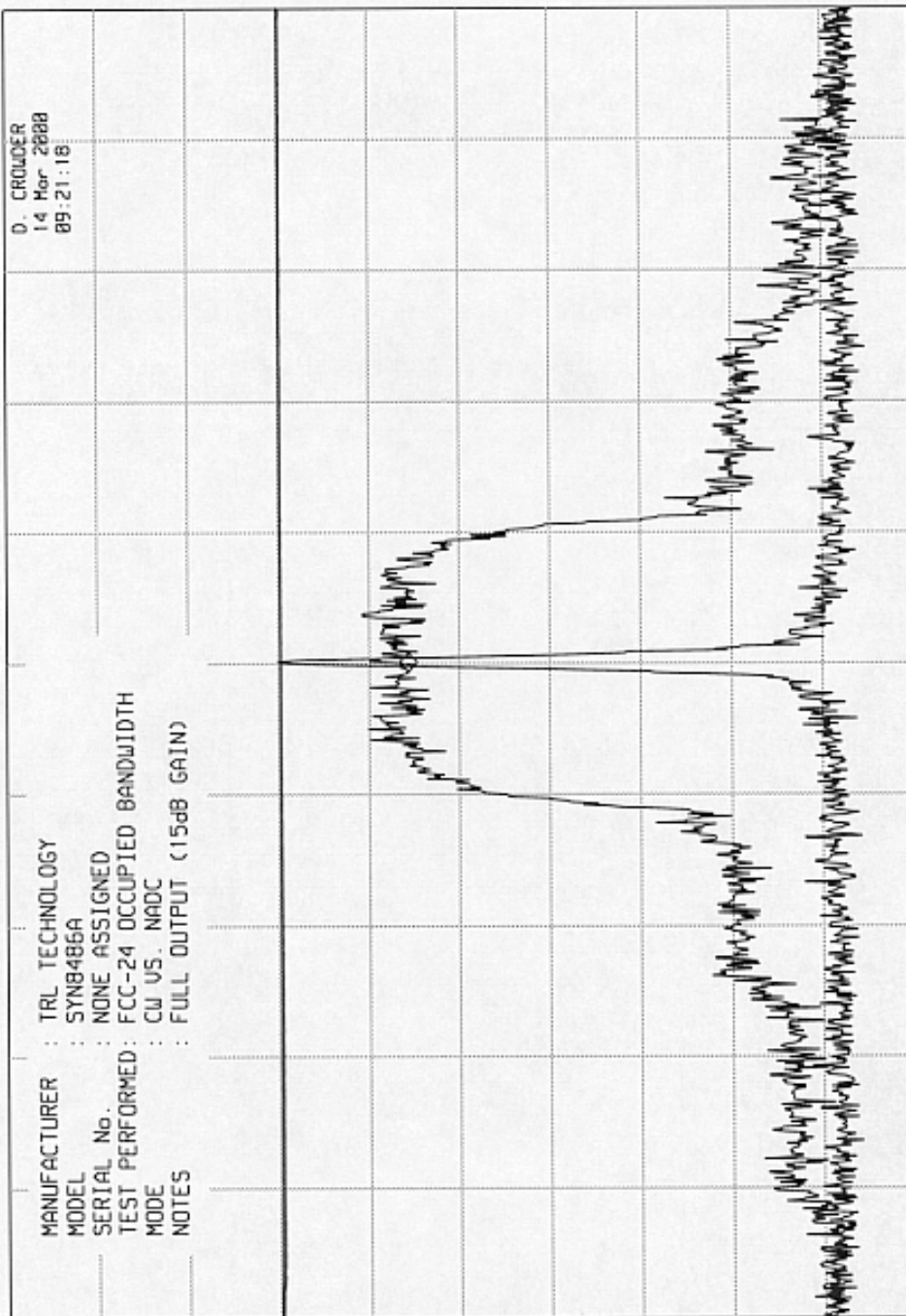
DL -12.0 dBm

CENTER 1.909 970 GHz      RES BW 300 Hz      UBW 1 kHz      SPAN 150 kHz  
SWP 4.50 sec

ELITE ELECTRONIC ENGINEERING CO

MKR 1.850 030 0 GHz  
-27.40 dBm

hp REF 17.0 dBm ATTN 30 dB + 40 dB EXT



MANUFACTURER : TRL TECHNOLOGY  
MODEL : SYN8486A  
SERIAL No. : NONE ASSIGNED  
TEST PERFORMED : FCC-24 OCCUPIED BANDWIDTH  
MODE : CW US. NADC  
NOTES : FULL OUTPUT (15dB GAIN)

D. CROUDER  
14 Mar 2008  
09:21:18

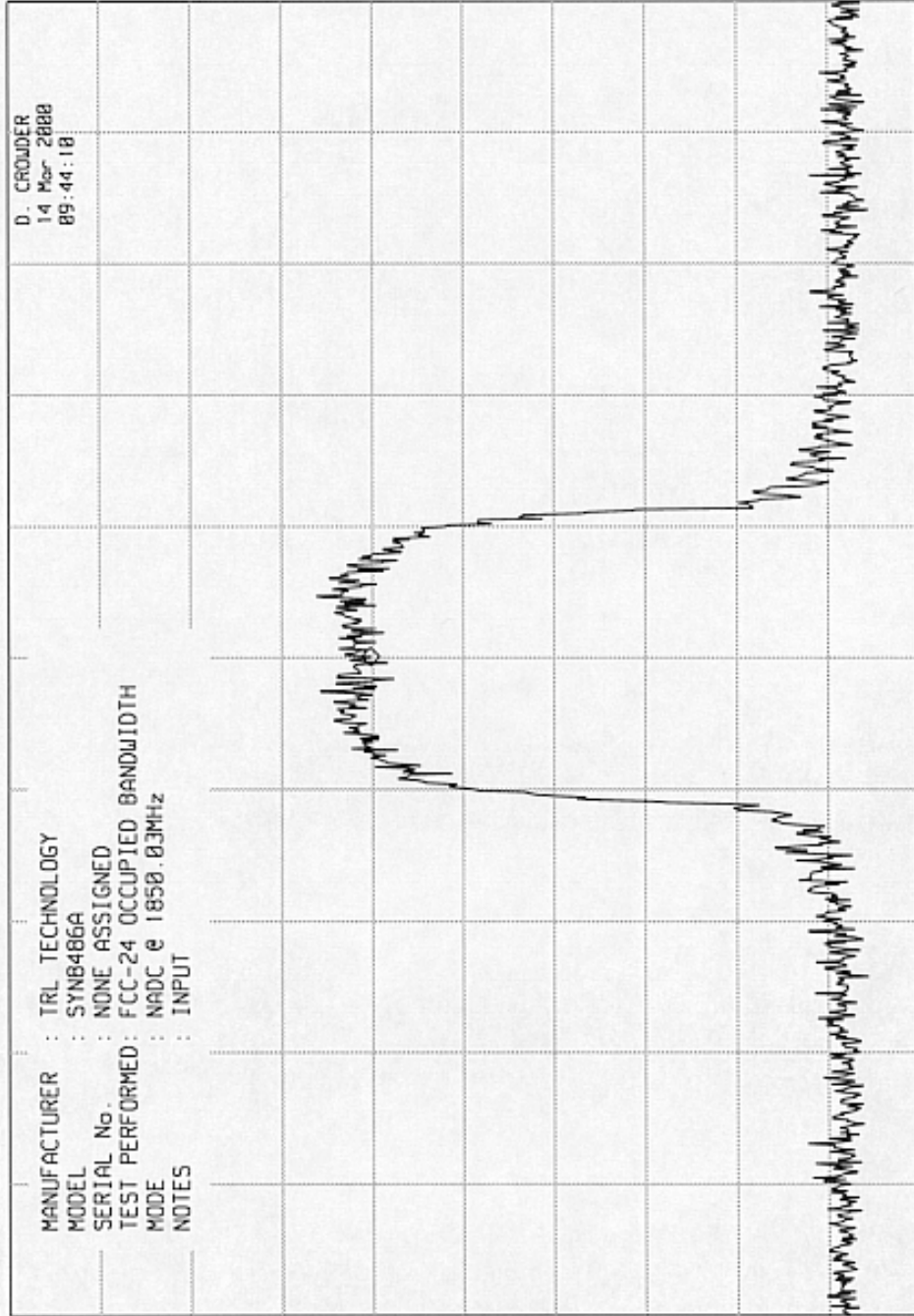
10 dB/  
DL -13.0 dBm

CENTER 1.850 030 GHz  
RES BW 300 Hz  
SPAN 150 kHz  
SWP 4.50 sec  
UBW 1 kHz

ELITE ELECTRONIC ENGINEERING CO

MKR 1.850 030 0 GHz  
-22.80 dBm

hp REF 17.0 dBm ATTEN 30 dB + 20 dB EXT.



D. CROWDER  
14 Mar 2000  
09:44:10

MANUFACTURER : TRL TECHNOLOGY  
MODEL : SYN8486A  
SERIAL NO. : NONE ASSIGNED  
TEST PERFORMED : FCC-24 OCCUPIED BANDWIDTH  
MODE : NADC e 1850.03MHz  
NOTES : INPUT

10 dB/

DL -13.0 dBm

CENTER 1.850 030 GHz  
RES BW 300 Hz  
SPAN 150 kHz  
SWP 4.50 sec  
UBW 1 kHz

ELITE ELECTRONIC ENGINEERING CO

