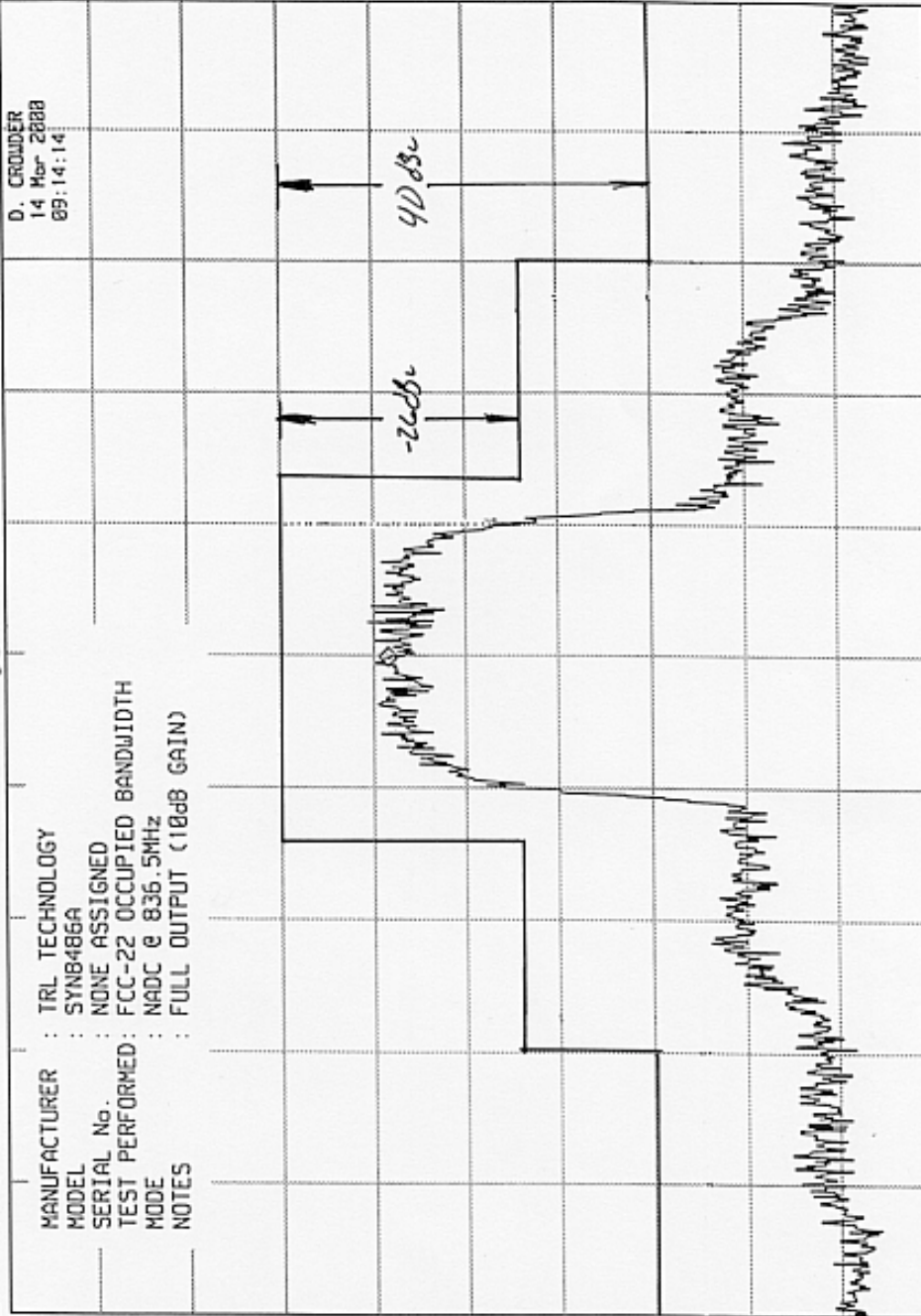


ELITE ELECTRONIC ENGINEERING CO

MKR 836.499 7 MHz
-24.60 dBm

REF 17.0 dBm ATTN 30 dB +40 dB Ext



hp 10 dB/

DL -13.0 dBm

MANUFACTURER : TRL TECHNOLOGY
 MODEL : SYN8486A
 SERIAL No. : NONE ASSIGNED
 TEST PERFORMED : FCC-22 OCCUPIED BANDWIDTH
 MODE : NADC @ 836.5MHz
 NOTES : FULL OUTPUT (10dB GAIN)

D. CROWDER
14 Mar 2008
09:14:14

SPAN 150 kHz
SWP 4.50 sec

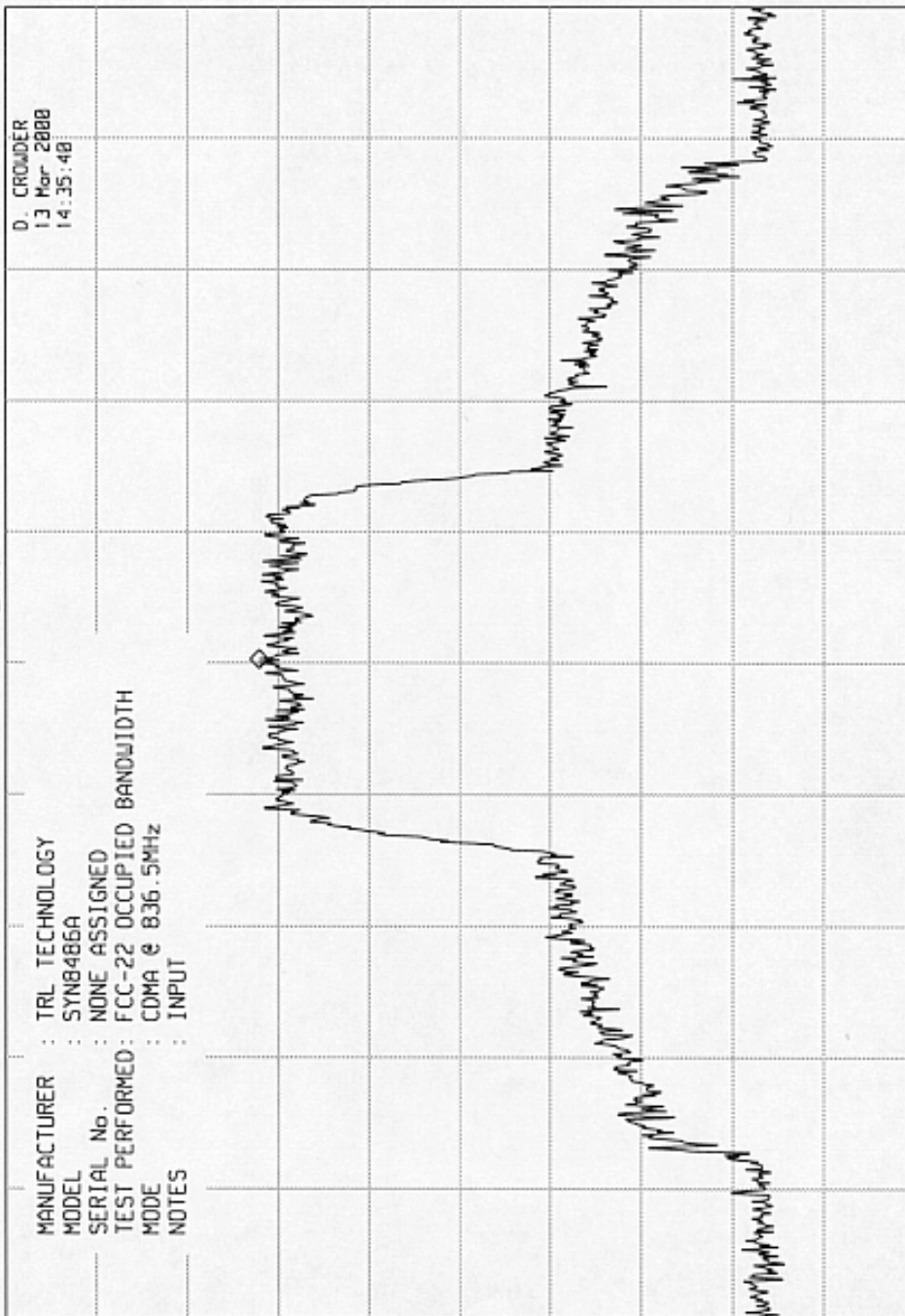
VBW 1 kHz

CENTER 836.500 MHz
RES BW 300 Hz

ELITE ELECTRONIC ENGINEERING CO

MKR 836.510 MHz
-10.90 dBm

REF 17.0 dBm ATTEN 30 dB +20 dB EXT.



hp

10 dB/

DL
-8.8
dBm

CENTER 836.50 MHz
RES BW 30 kHz
SPAN 5.00 MHz
SUP 20.0 msec
UBW 100 kHz

ELITE ELECTRONIC ENGINEERING CO

MKR 836.510 MHz
-21.80 dBm

REF 17.0 dBm ATTEN 30 dB +40 dB EXT

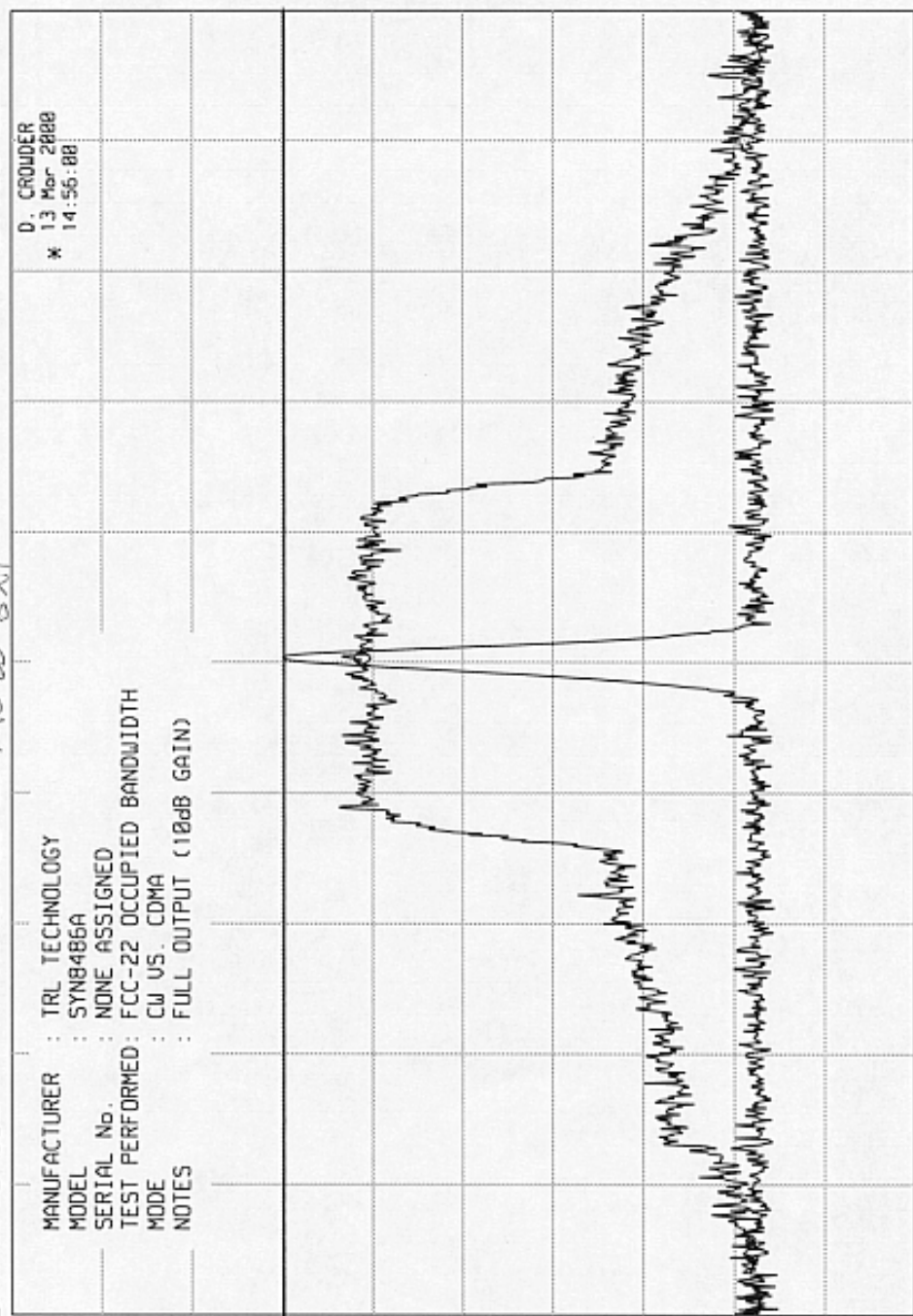
D. CROUDER
* 13 Mar 2008
14:56:08

MANUFACTURER : TRL TECHNOLOGY
MODEL : SYN8486A
SERIAL No. : NONE ASSIGNED
TEST PERFORMED : FCC-22 OCCUPIED BANDWIDTH
MODE : CW US. CDMA
NOTES : FULL OUTPUT (10dB GAIN)

hp

10 dB/

DL -9.0 dBm



SPAN 5.00 MHz
SWP 20.0 msec

UBW 100 kHz

CENTER 836.50 MHz
RES BW 30 kHz

ELITE ELECTRONIC ENGINEERING CO

MR 836.510 MHz
-21.80 dBm

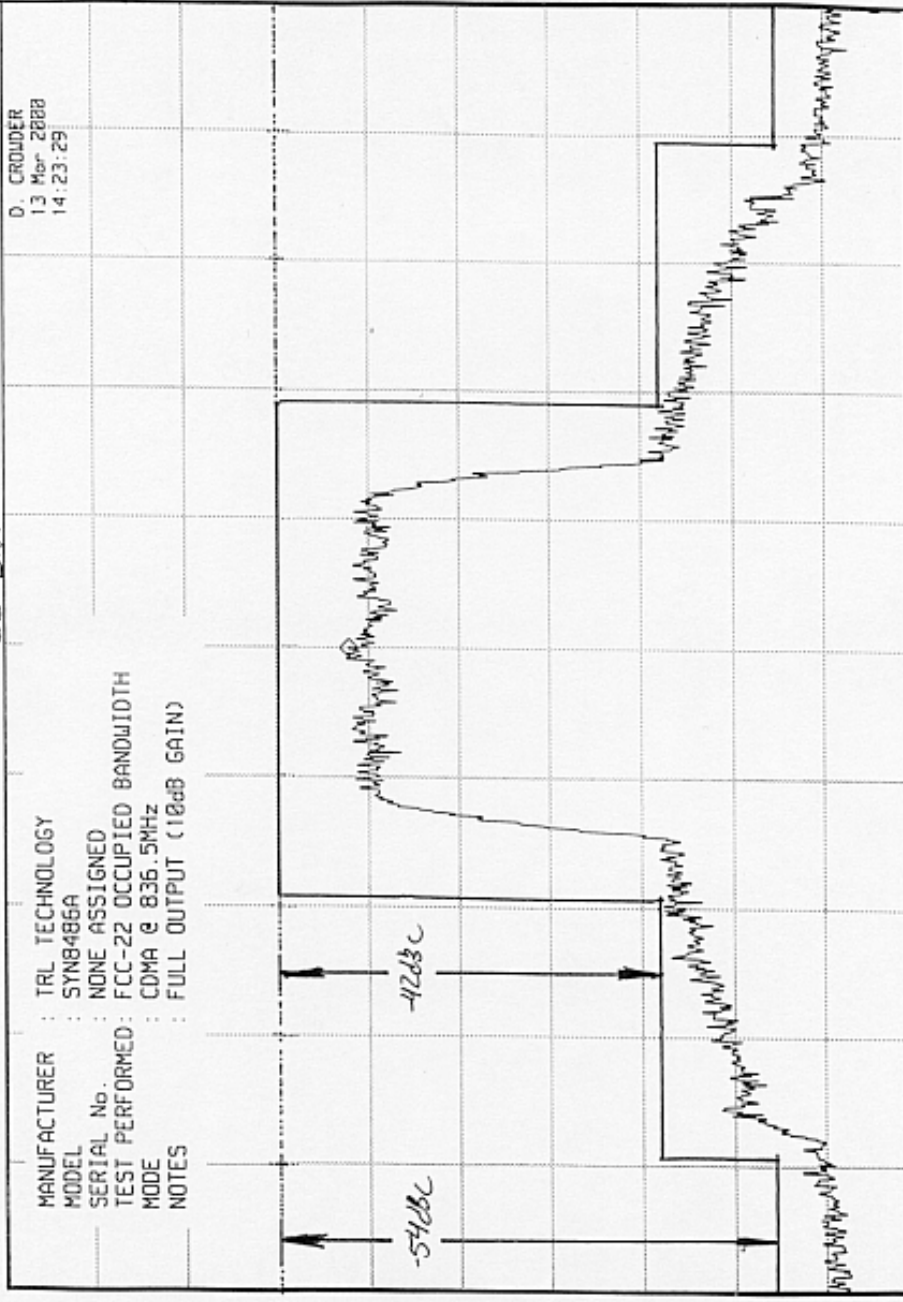
hp

REF 17.0 dBm

ATTEN 30 dB + 40 dB EXT

10 dB/

MANUFACTURER : TRL TECHNOLOGY
 MODEL : SYN8486A
 SERIAL No. : NONE ASSIGNED
 TEST PERFORMED : FCC-22 OCCUPIED BANDWIDTH
 MODE : CDMA @ 836.5MHz
 NOTES : FULL OUTPUT (10dB GAIN)



D. CRIDER
 13 Mar 2008
 14:23:29

DL -13.0 dBm

CENTER 836.50 MHz
RES BW 30 kHz

SPAN 5.00 MHz
SWP 20.0 msec

UBW 100 kHz