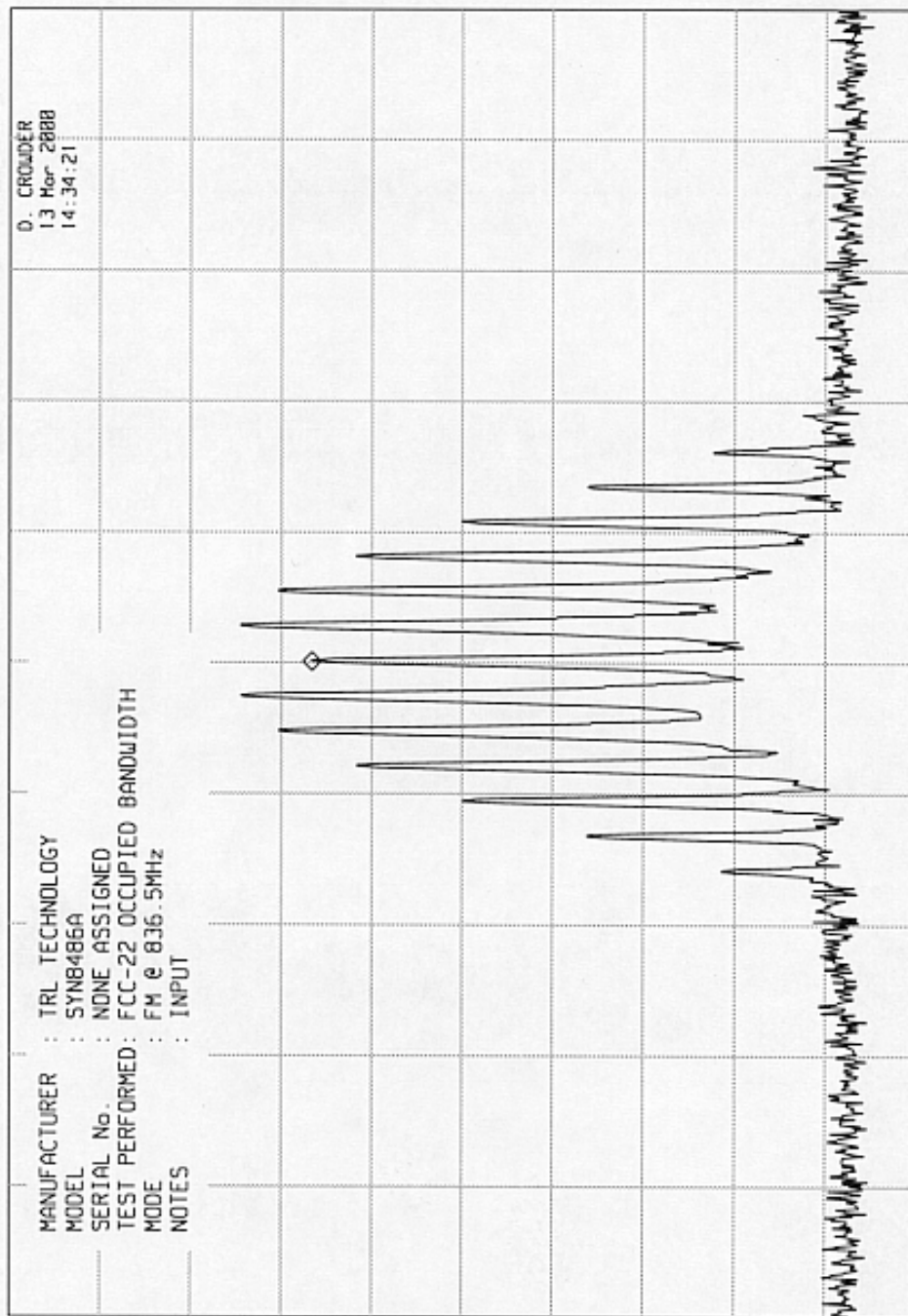


ELITE ELECTRONIC ENGINEERING CO

MKR 836.500 0 MHz
-15.40 dBm

REF 18.0 dBm ATTN 30 dB +20 dB EXT

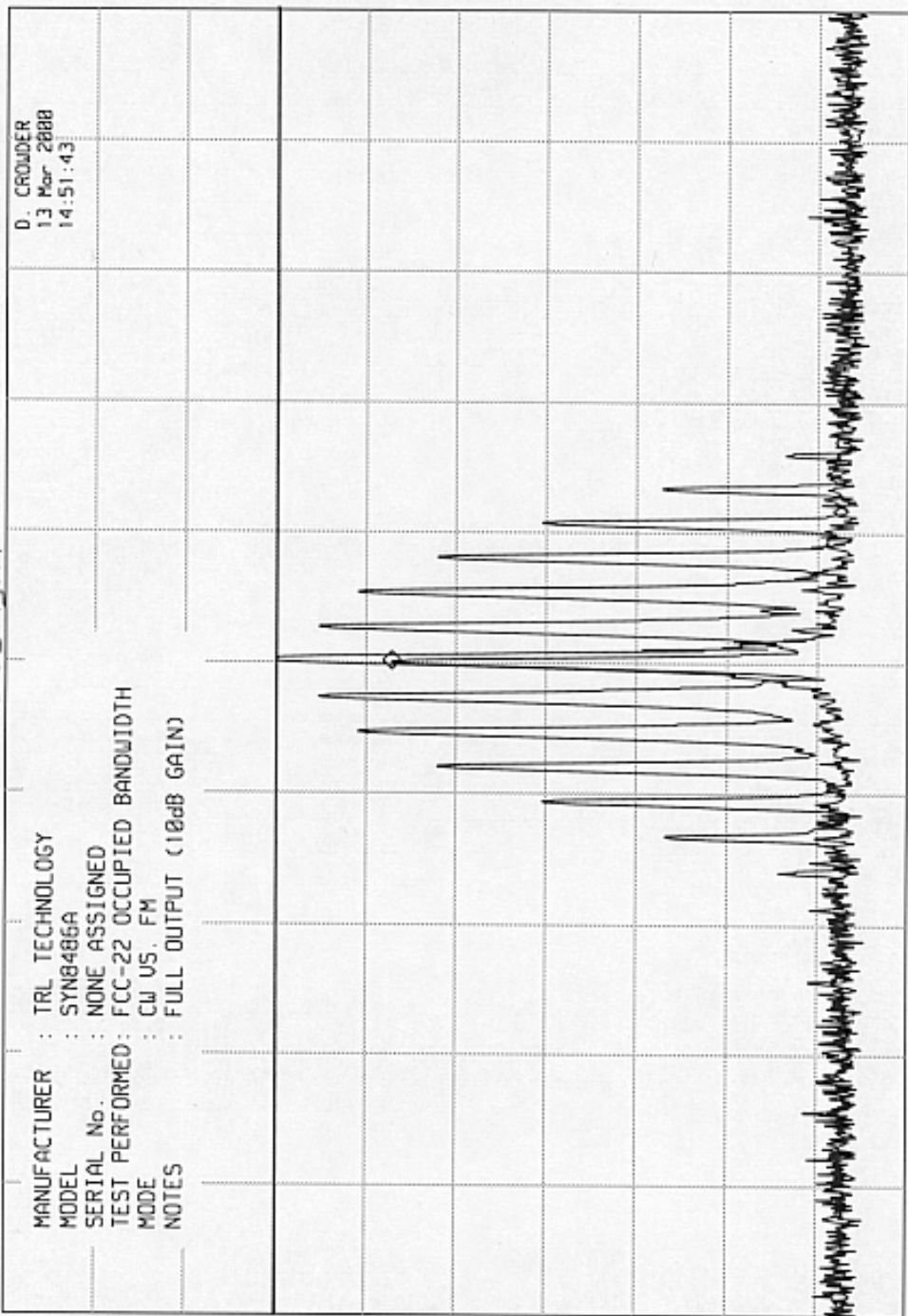


ELITE ELECTRONIC ENGINEERING CO

MKR 836.500 2 MHz
-24.90 dBm

ATTEN 30 dB +40 dB EXT

REF 18.0 dBm



hp

10 dB/

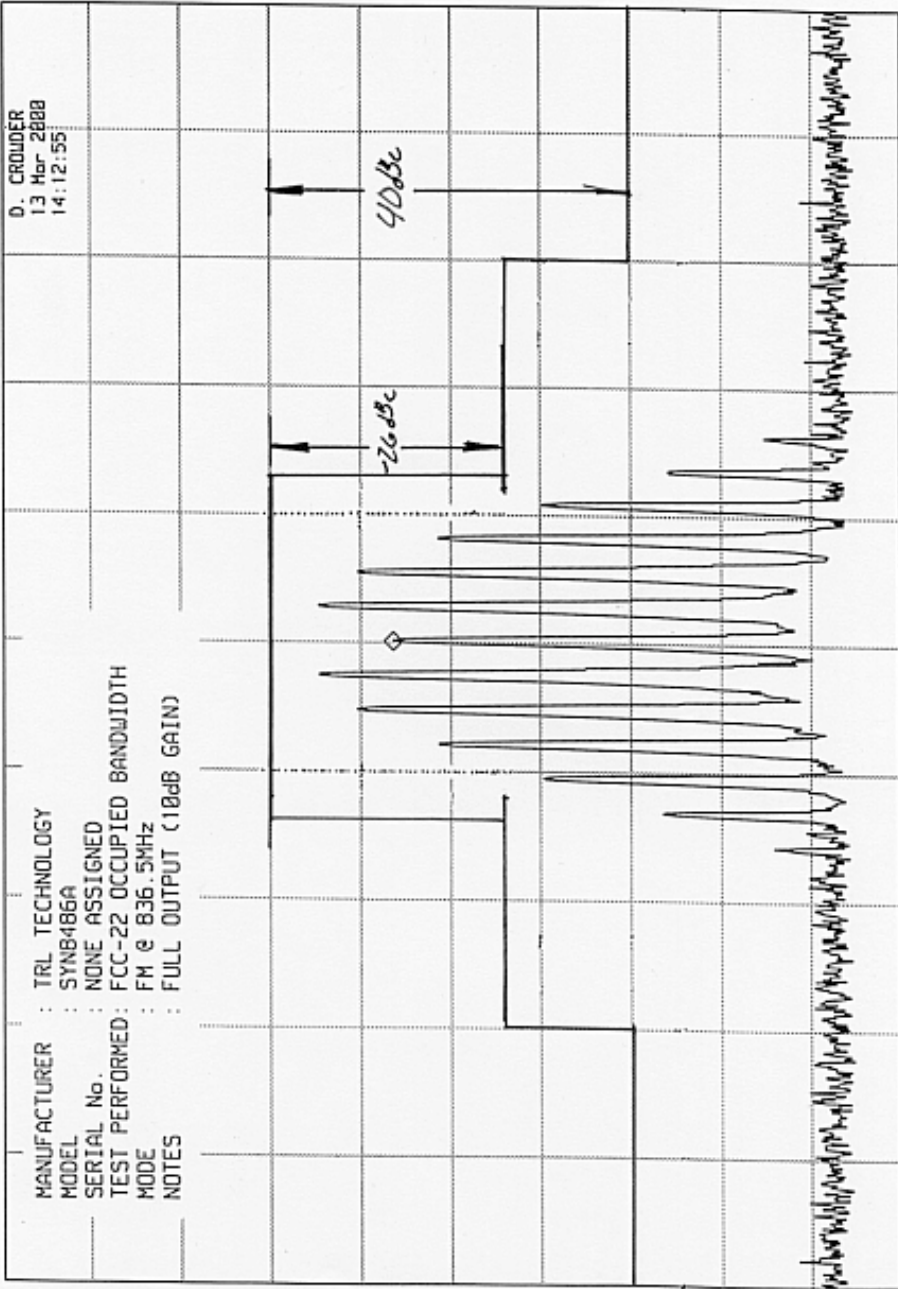
DL -9.0 dBm

CENTER 836.500 MHz
RES BW 300 Hz
UBW 1 kHz
SPAN 150 kHz
SWP 4.50 sec

ELITE ELECTRONIC ENGINEERING CO

MKR 836.500 0 MHz
-25.60 dBm

REF 18.0 dBm ATTEN 30 dB + 40 dB EXT



MANUFACTURER : TRL TECHNOLOGY
 MODEL : SYN8486A
 SERIAL No. : NONE ASSIGNED
 TEST PERFORMED: FCC-22 OCCUPIED BANDWIDTH
 MODE : FM @ 836.5MHz
 NOTES : FULL OUTPUT (10dB GAIN)

D. CROUDER
 13 Mar 2008
 14:12:55

hp 10 dB/

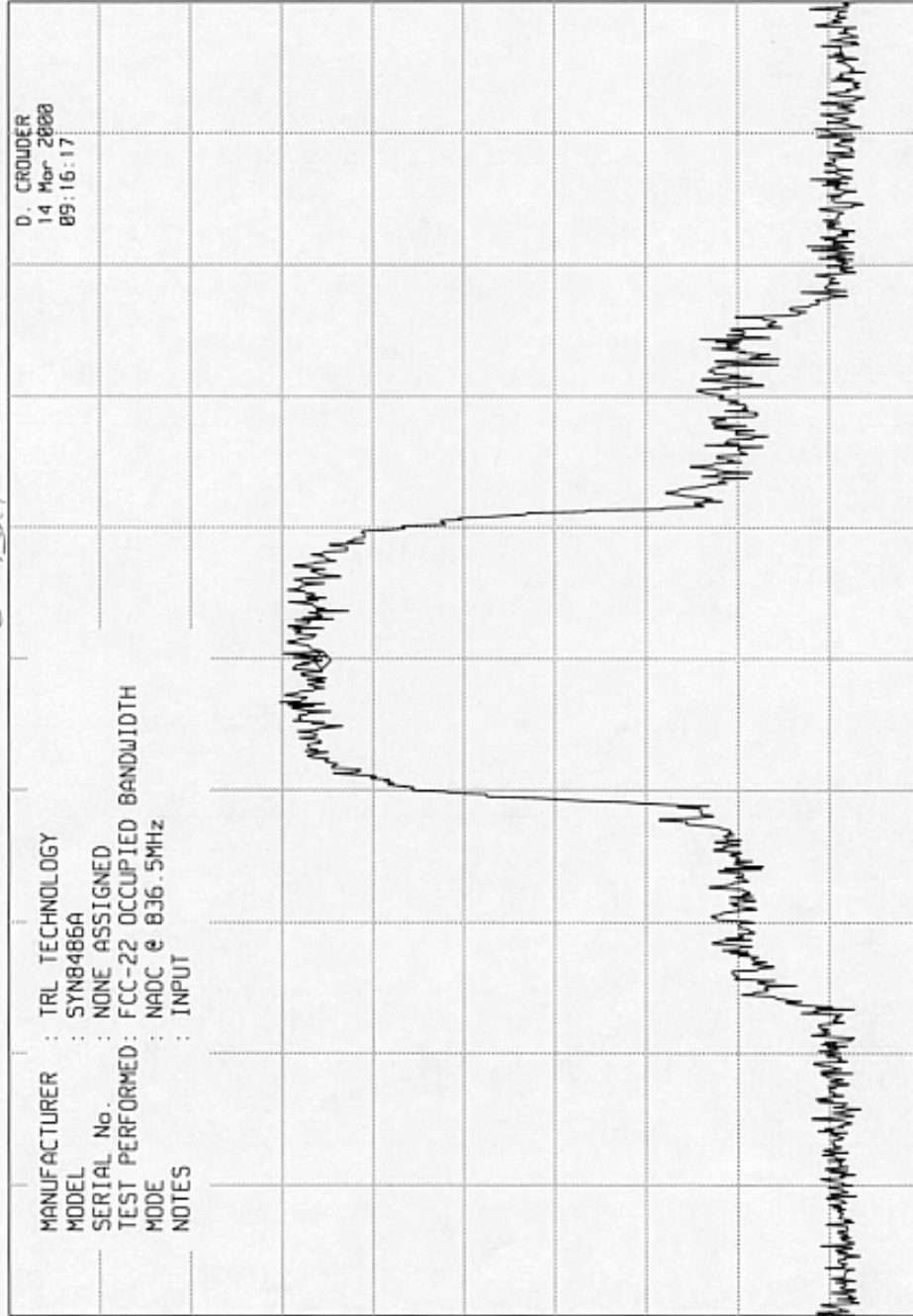
DL -12.0 dBm

CENTER 836.500 MHz
 RES BW 300 Hz
 UBW 1 kHz
 SPAN 150 kHz
 SWP 4.50 sec

ELITE ELECTRONIC ENGINEERING CO

MKR 836.499 7 MHz
-17.40 dBm

REF 17.0 dBm
ATTEN 30 dB + 20 dB EXT



MANUFACTURER : TRL TECHNOLOGY
 MODEL : SYN8486A
 SERIAL No. : NONE ASSIGNED
 TEST PERFORMED : FCC-22 OCCUPIED BANDWIDTH
 MODE : NADC @ 836.5MHz
 NOTES : INPUT

D. CROWDER
 14 Mar 2008
 09:16:17

hp 10 dB/

DL -13.0 dBm

CENTER 836.500 MHz
RES BW 300 Hz
SPAN 150 kHz
SWP 4.50 sec

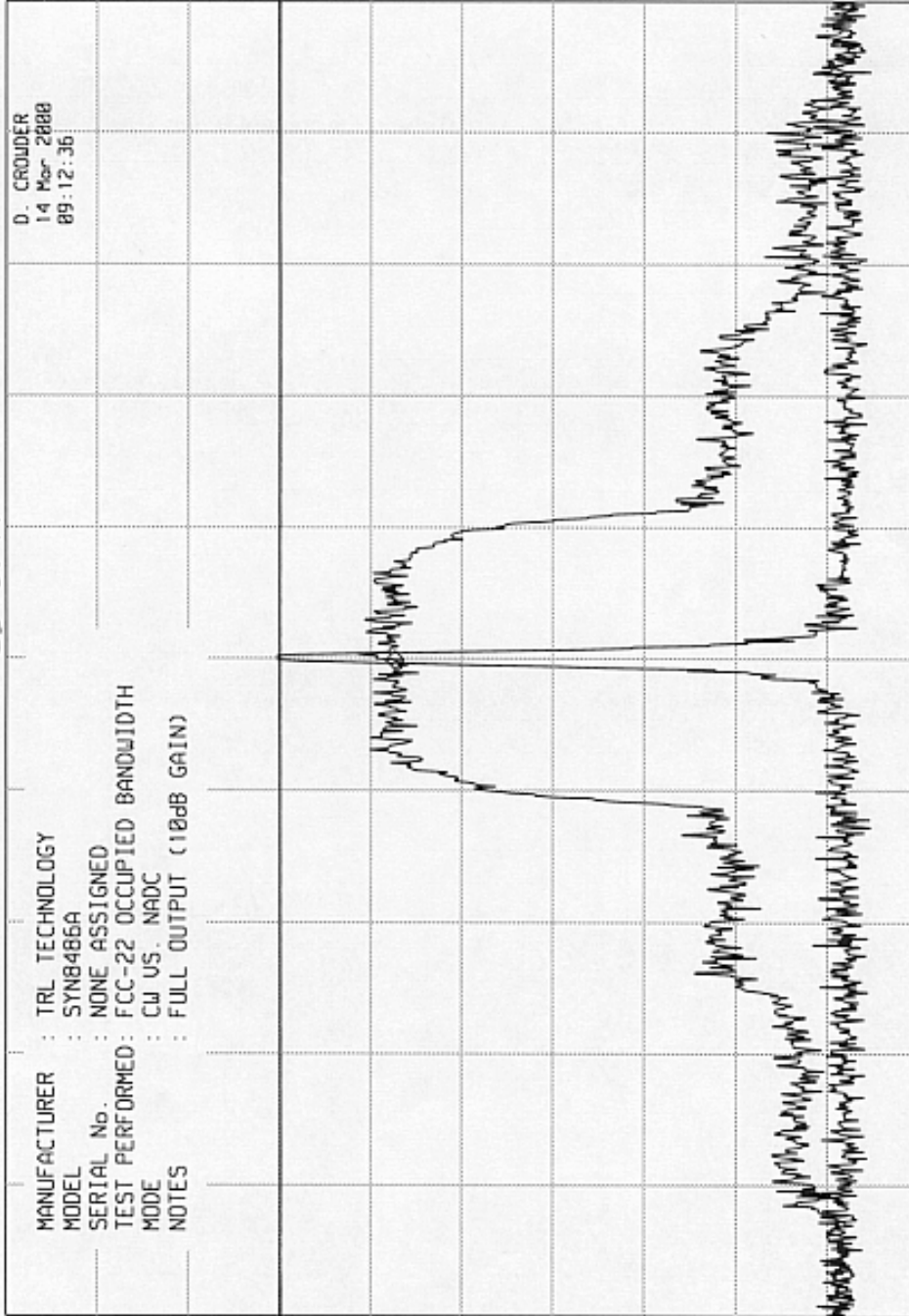
UBW 1 kHz

ELITE ELECTRONIC ENGINEERING CO

MKR 836.499 7 MHz
-25.70 dBm

ATTEN 30 dB + 40 dB EXT.

REF 17.0 dBm



MANUFACTURER : TRL TECHNOLOGY
 MODEL : SYN8486A
 SERIAL No. : NONE ASSIGNED
 TEST PERFORMED : FCC-22 OCCUPIED BANDWIDTH
 MODE : CW US. NADC
 NOTES : FULL OUTPUT (10dB GAIN)

D. CROUDER
 14 Mar 2008
 09:12:36

hp

10 dB/

DL -13.0 dBm

CENTER 836.500 MHz
 RES BW 300 Hz
 SPAN 150 kHz
 SWP 4.50 sec